



## DRILL STEM TEST REPORT

Prepared For: **McCoy Petroleum Corp.**

9342 E. Central  
Wichita, KS 67206

ATTN: Zach Wiele

### **Reed Trust A #1-36**

### **36-28s-29w Gray,KS**

Start Date: 2017.02.28 @ 02:00:50

End Date: 2017.02.28 @ 09:47:50

Job Ticket #: 65665                      DST #: 1

Trilobite Testing, Inc

PO Box 362 Hays, KS 67601

ph: 785-625-4778 fax: 785-625-5620

Printed: 2017.03.06 @ 09:54:27



**TRILOBITE TESTING, INC.**

# DRILL STEM TEST REPORT

McCoy Petroleum Corp.

**36-28s-29w Gray, KS**

9342 E. Central  
Wichita, KS 67206

**Reed Trust A #1-36**

ATTN: Zach Wiele

Job Ticket: 65665

**DST#: 1**

Test Start: 2017.02.28 @ 02:00:50

## GENERAL INFORMATION:

Formation: **Pawnee**

Deviated: No Whipstock: ft (KB)

Time Tool Opened: 04:23:50

Time Test Ended: 09:47:50

Test Type: Conventional Bottom Hole (Initial)

Tester: Brandon Turley

Unit No: 79

**Interval: 4880.00 ft (KB) To 4910.00 ft (KB) (TVD)**

Reference Elevations: 2780.00 ft (KB)

Total Depth: 4910.00 ft (KB) (TVD)

2769.00 ft (CF)

Hole Diameter: 7.88 inches Hole Condition: Good

KB to GR/CF: 11.00 ft

**Serial #: 8166 Outside**

Press@RunDepth: 34.45 psig @ 4881.00 ft (KB)

Capacity: 8000.00 psig

Start Date: 2017.02.28

End Date:

2017.02.28

Last Calib.:

2017.02.28

Start Time: 02:00:55

End Time:

09:47:49

Time On Btm:

2017.02.28 @ 04:20:50

Time Off Btm:

2017.02.28 @ 07:37:50

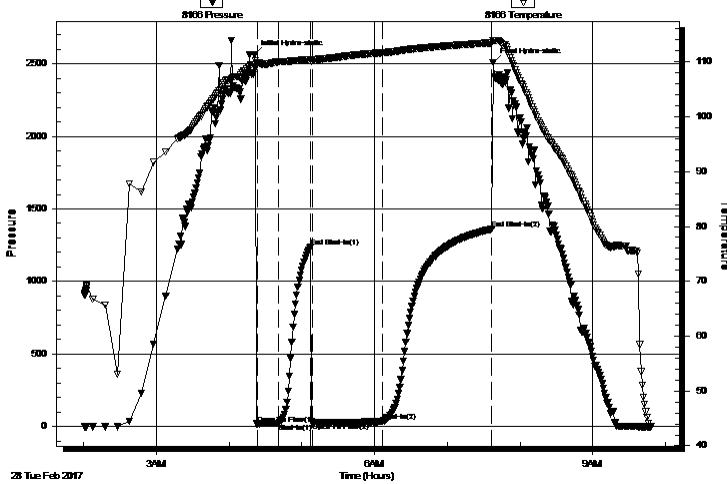
TEST COMMENT: IF: 1/4" blow died to surface.

IS: No return.

FF: Surface blow built to 1/4"

FS: No return.

Pressure vs. Time



## PRESSURE SUMMARY

Time (Min.)	Pressure (psig)	Temp (deg F)	Annotation
0	2561.03	109.57	Initial Hydro-static
3	17.49	109.80	Open To Flow (1)
20	23.73	110.01	Shut-In(1)
47	1238.89	110.45	End Shut-In(1)
48	25.93	110.36	Open To Flow (2)
106	34.45	111.66	Shut-In(2)
196	1360.42	113.48	End Shut-In(2)
197	2510.24	113.91	Final Hydro-static

## Recovery

Length (ft)	Description	Volume (bbl)
20.00	mud 100%m	0.10

## Gas Rates

Choke (inches)	Pressure (psig)	Gas Rate (Mcf/d)





**TRILOBITE  
TESTING, INC.**

# DRILL STEM TEST REPORT

**TOOL DIAGRAM**

McCoy Petroleum Corp.

**36-28s-29w Gray,KS**

9342 E. Central  
Wichita, KS 67206

**Reed Trust A #1-36**

Job Ticket: 65665

**DST#: 1**

ATTN: Zach Wiele

Test Start: 2017.02.28 @ 02:00:50

## Tool Information

Drill Pipe:	Length: 4649.00 ft	Diameter: 3.80 inches	Volume: 65.21 bbl	Tool Weight: 2000.00 lb
Heavy Wt. Pipe:	Length: 0.00 ft	Diameter: 0.00 inches	Volume: 0.00 bbl	Weight set on Packer: 30000.00 lb
Drill Collar:	Length: 217.00 ft	Diameter: 2.25 inches	Volume: 1.07 bbl	Weight to Pull Loose: 85000.00 lb
			<u>Total Volume: 66.28 bbl</u>	Tool Chased 0.00 ft
Drill Pipe Above KB:	13.00 ft			String Weight: Initial 78000.00 lb
Depth to Top Packer:	4880.00 ft			Final 78000.00 lb
Depth to Bottom Packer:	ft			
Interval between Packers:	30.00 ft			
Tool Length:	57.00 ft			
Number of Packers:	2	Diameter: 6.75 inches		

Tool Comments:

Tool Description	Length (ft)	Serial No.	Position	Depth (ft)	Accum. Lengths
------------------	-------------	------------	----------	------------	----------------

Stubb	1.00			4854.00	
Shut In Tool	5.00			4859.00	
Hydraulic tool	5.00			4864.00	
Jars	5.00			4869.00	
Safety Joint	2.00			4871.00	
Packer	5.00			4876.00	27.00 Bottom Of Top Packer
Packer	4.00			4880.00	
Stubb	1.00			4881.00	
Recorder	0.00	8875	Inside	4881.00	
Recorder	0.00	8166	Outside	4881.00	
Perforations	24.00			4905.00	
Bullnose	5.00			4910.00	30.00 Bottom Packers & Anchor

**Total Tool Length: 57.00**



**TRILOBITE  
TESTING, INC.**

# DRILL STEM TEST REPORT

## FLUID SUMMARY

McCoy Petroleum Corp.

**36-28s-29w Gray,KS**

9342 E. Central  
Wichita, KS 67206

**Reed Trust A #1-36**

Job Ticket: 65665

**DST#: 1**

ATTN: Zach Wiele

Test Start: 2017.02.28 @ 02:00:50

### Mud and Cushion Information

Mud Type: Gel Chem

Cushion Type:

Oil API:

0 deg API

Mud Weight: 9.00 lb/gal

Cushion Length:

ft

Water Salinity:

0 ppm

Viscosity: 56.00 sec/qt

Cushion Volume:

bbbl

Water Loss: 6.39 in<sup>3</sup>

Gas Cushion Type:

Resistivity: 0.00 ohm.m

Gas Cushion Pressure:

psig

Salinity: 3500.00 ppm

Filter Cake: 1.00 inches

### Recovery Information

Recovery Table

Length ft	Description	Volume bbl
20.00	mud 100%m	0.098

Total Length: 20.00 ft      Total Volume: 0.098 bbl

Num Fluid Samples: 0

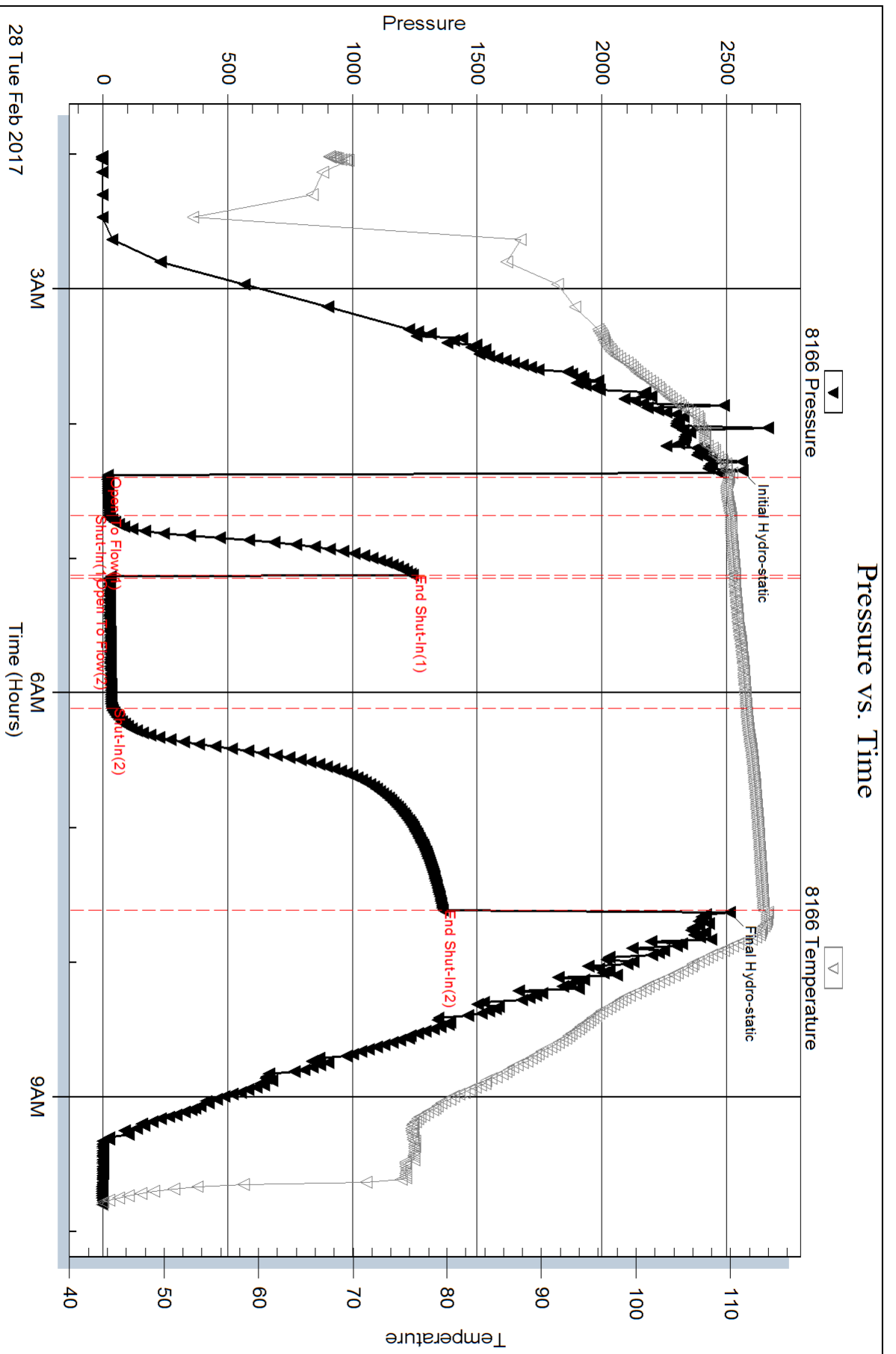
Num Gas Bombs: 0

Serial #:

Laboratory Name:

Laboratory Location:

Recovery Comments:



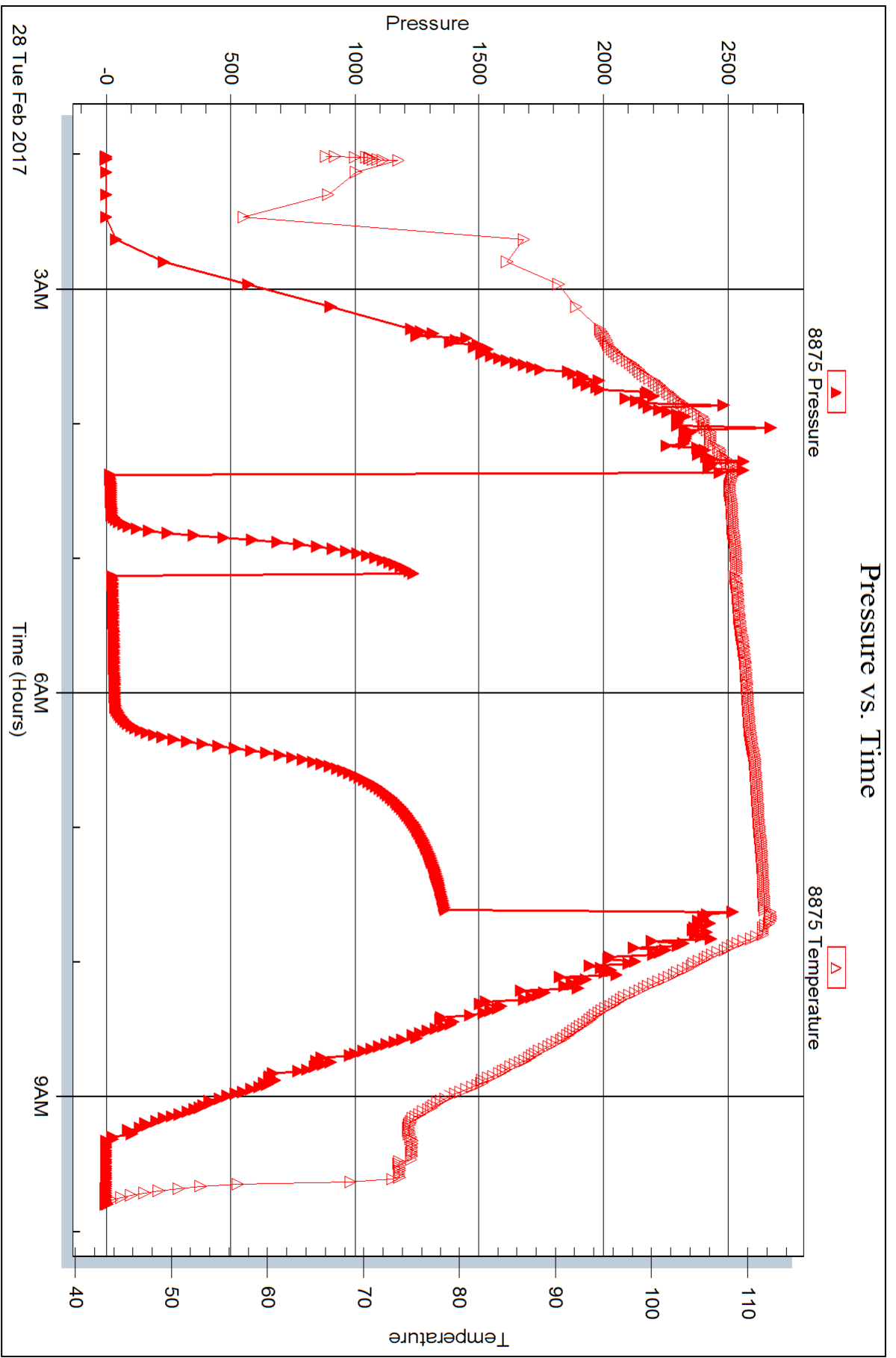
Serial #: 8875

Inside

McCoy Petroleum Corp.

Reed Trust A #1-36

DST Test Number: 1



Triobite Testing, Inc

Ref. No: 65665

Printed: 2017.03.06 @ 09:54:28



## DRILL STEM TEST REPORT

Prepared For: **McCoy Petroleum Corp.**

9342 E. Central  
Wichita, KS 67206

ATTN: Zach Wiele

### **Reed Trust A #1-36**

### **36-28s-29w Gray,KS**

Start Date: 2017.03.01 @ 02:26:43

End Date: 2017.03.01 @ 11:06:13

Job Ticket #: 65666                      DST #: 2

Trilobite Testing, Inc  
PO Box 362 Hays, KS 67601  
ph: 785-625-4778 fax: 785-625-5620

Printed: 2017.03.06 @ 09:53:59





**TRILOBITE TESTING, INC.**

# DRILL STEM TEST REPORT

McCoy Petroleum Corp.

**36-28s-29w Gray, KS**

9342 E. Central  
Wichita, KS 67206

**Reed Trust A #1-36**

ATTN: Zach Wiele

Job Ticket: 65666

**DST#: 2**

Test Start: 2017.03.01 @ 02:26:43

## GENERAL INFORMATION:

Formation: **St. Louis**

Deviated: No Whipstock: ft (KB)

Time Tool Opened: 04:58:13

Time Test Ended: 11:06:13

Test Type: Conventional Bottom Hole (Reset)

Tester: Brandon Turley

Unit No: 79

**Interval: 5170.00 ft (KB) To 5201.00 ft (KB) (TVD)**

Reference Elevations: 2780.00 ft (KB)

Total Depth: 5201.00 ft (KB) (TVD)

2769.00 ft (CF)

Hole Diameter: 7.88 inches Hole Condition: Good

KB to GR/CF: 11.00 ft

**Serial #: 8166 Outside**

Press@RunDepth: 74.31 psig @ 5171.00 ft (KB)

Capacity: 8000.00 psig

Start Date: 2017.03.01

End Date:

2017.03.01

Last Calib.: 2017.03.01

Start Time: 02:26:48

End Time:

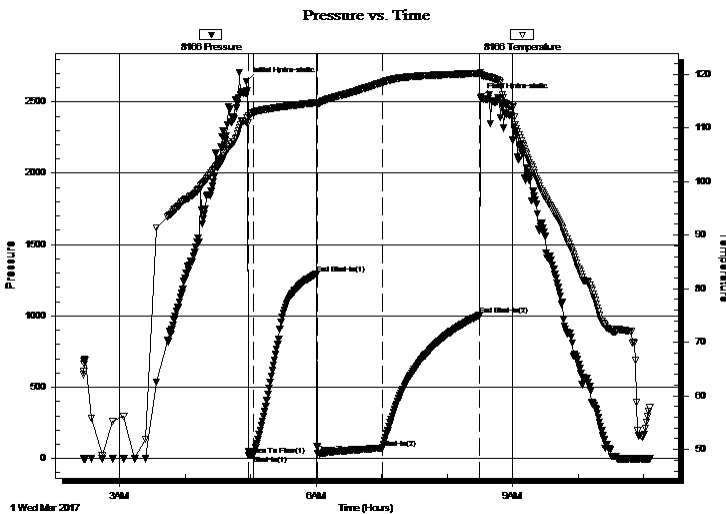
11:06:13

Time On Btm: 2017.03.01 @ 04:56:13

Time Off Btm: 2017.03.01 @ 08:30:43

**TEST COMMENT:** IF: BOB in 4 min.  
IS: No return.  
FF: BOB in 30 sec.  
FS: Surface blow died in 30 min.

## PRESSURE SUMMARY



Time (Min.)	Pressure (psig)	Temp (deg F)	Annotation
0	2644.57	111.17	Initial Hydro-static
2	22.87	112.18	Open To Flow (1)
7	25.29	112.85	Shut-In(1)
64	1292.47	114.71	End Shut-In(1)
65	34.22	114.34	Open To Flow (2)
125	74.31	118.47	Shut-In(2)
213	1002.62	120.17	End Shut-In(2)
215	2532.93	120.35	Final Hydro-static

## Recovery

Length (ft)	Description	Volume (bbl)
62.00	mw cgo 40%g 30%o 10%w 20%m	0.30
62.00	gocm 10%g 10%o 80%m	0.30
20.00	oil 100%o	0.10
0.00	2061 GIP	0.00

\* Recovery from multiple tests

## Gas Rates

Choke (inches)	Pressure (psig)	Gas Rate (Mcf/d)





**TRILOBITE  
TESTING, INC.**

# DRILL STEM TEST REPORT

**TOOL DIAGRAM**

McCoy Petroleum Corp.

**36-28s-29w Gray,KS**

9342 E. Central  
Wichita, KS 67206

**Reed Trust A #1-36**

Job Ticket: 65666

**DST#: 2**

ATTN: Zach Wiele

Test Start: 2017.03.01 @ 02:26:43

## Tool Information

Drill Pipe:	Length: 4936.00 ft	Diameter: 3.80 inches	Volume: 69.24 bbl	Tool Weight:	2000.00 lb
Heavy Wt. Pipe:	Length: 0.00 ft	Diameter: 0.00 inches	Volume: 0.00 bbl	Weight set on Packer:	30000.00 lb
Drill Collar:	Length: 217.00 ft	Diameter: 2.25 inches	Volume: 1.07 bbl	Weight to Pull Loose:	90000.00 lb
			<u>Total Volume: 70.31 bbl</u>	Tool Chased	0.00 ft
Drill Pipe Above KB:	10.00 ft			String Weight: Initial	82000.00 lb
Depth to Top Packer:	5170.00 ft			Final	82000.00 lb
Depth to Bottom Packer:	ft				
Interval between Packers:	31.00 ft				
Tool Length:	58.00 ft				
Number of Packers:	2	Diameter: 6.75 inches			

Tool Comments:

Tool Description	Length (ft)	Serial No.	Position	Depth (ft)	Accum. Lengths
------------------	-------------	------------	----------	------------	----------------

Stubb	1.00			5144.00	
Shut In Tool	5.00			5149.00	
Hydraulic tool	5.00			5154.00	
Jars	5.00			5159.00	
Safety Joint	2.00			5161.00	
Packer	5.00			5166.00	27.00 Bottom Of Top Packer
Packer	4.00			5170.00	
Stubb	1.00			5171.00	
Recorder	0.00	8875	Inside	5171.00	
Recorder	0.00	8166	Outside	5171.00	
Perforations	25.00			5196.00	
Bullnose	5.00			5201.00	31.00 Bottom Packers & Anchor

**Total Tool Length: 58.00**



**TRILOBITE  
TESTING, INC.**

# DRILL STEM TEST REPORT

**FLUID SUMMARY**

McCoy Petroleum Corp.

**36-28s-29w Gray,KS**

9342 E. Central  
Wichita, KS 67206

**Reed Trust A #1-36**

Job Ticket: 65666

**DST#: 2**

ATTN: Zach Wiele

Test Start: 2017.03.01 @ 02:26:43

## Mud and Cushion Information

Mud Type: Gel Chem

Cushion Type:

Oil API:

0 deg API

Mud Weight: 9.00 lb/gal

Cushion Length:

ft

Water Salinity:

0 ppm

Viscosity: 58.00 sec/qt

Cushion Volume:

bbbl

Water Loss: 7.59 in<sup>3</sup>

Gas Cushion Type:

Resistivity: 0.00 ohm.m

Gas Cushion Pressure:

psig

Salinity: 1850.00 ppm

Filter Cake: 1.00 inches

## Recovery Information

Recovery Table

Length ft	Description	Volume bbbl
62.00	mw cgo 40%g 30%o 10%w 20%m	0.305
62.00	gocm 10%g 10%o 80%m	0.305
20.00	oil 100%o	0.098
0.00	2061 GIP	0.000

Total Length: 144.00 ft

Total Volume: 0.708 bbl

Num Fluid Samples: 0

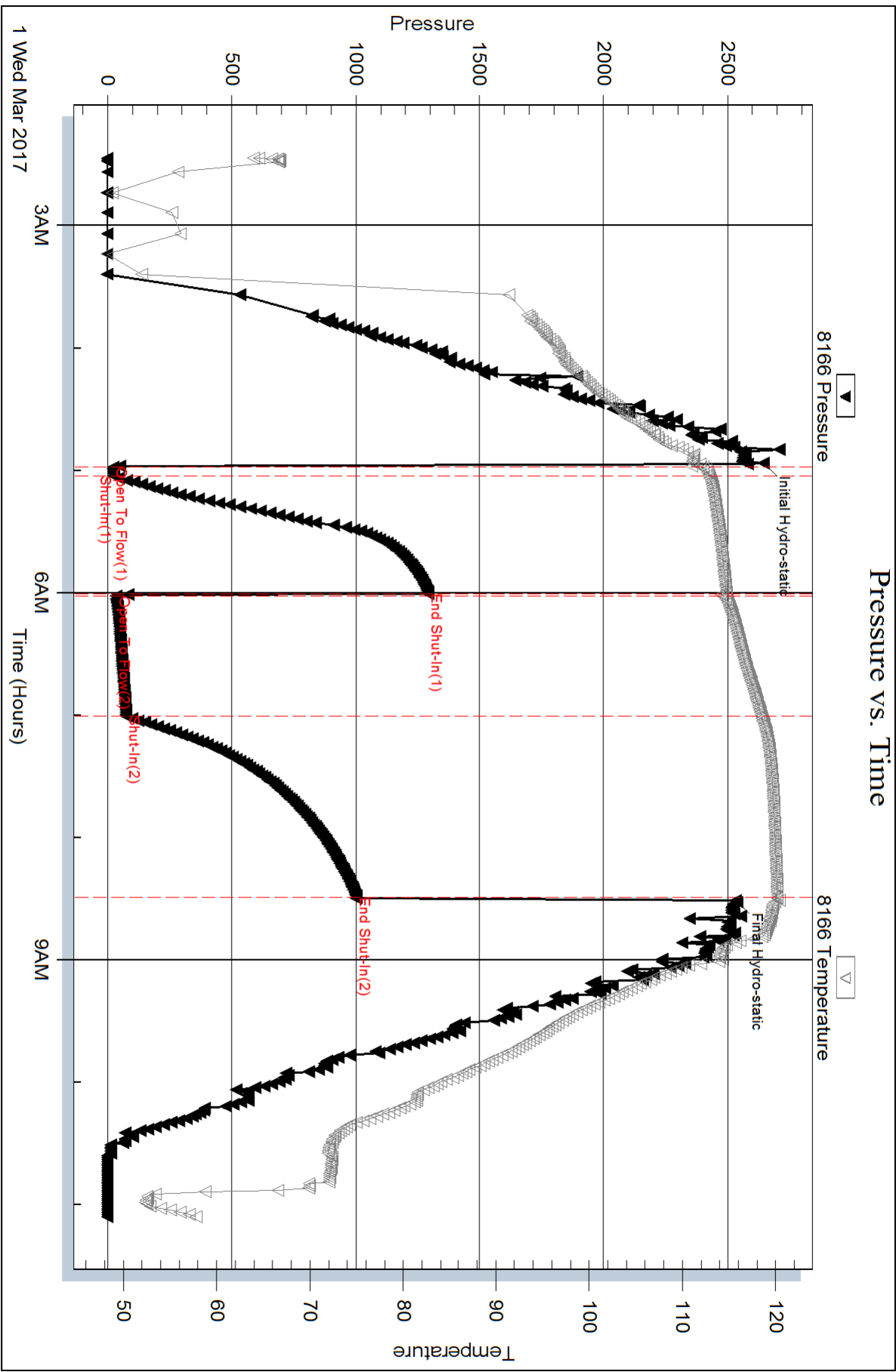
Num Gas Bombs: 0

Serial #:

Laboratory Name:

Laboratory Location:

Recovery Comments:



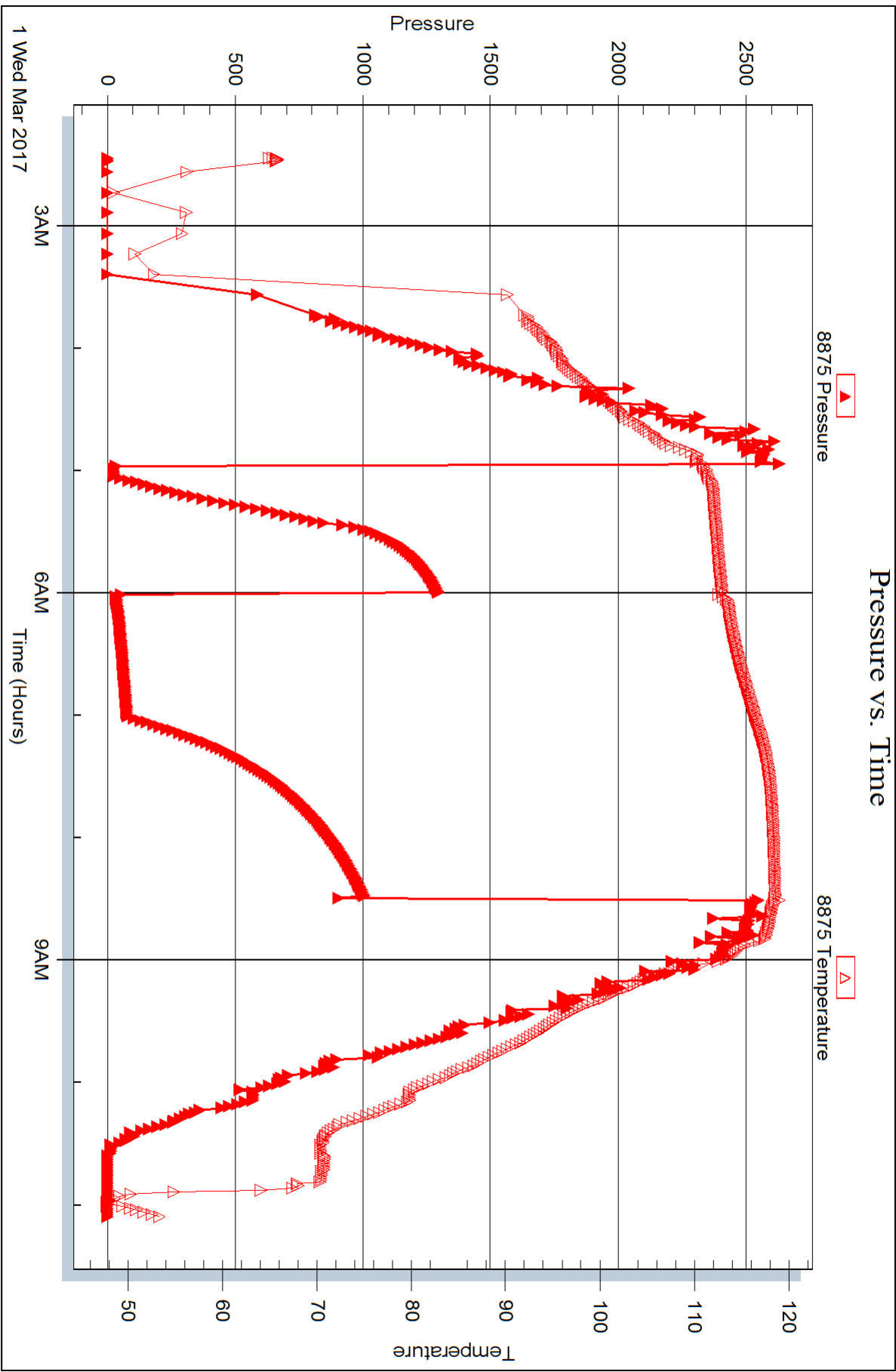
Serial #: 8875

Inside

McCoy Petroleum Corp.

Reed Trust A #1-36

DST Test Number: 2





## DRILL STEM TEST REPORT

Prepared For: **McCoy Petroleum Corp.**

9342 E. Central  
Wichita, KS 67206

ATTN: Zach Wiele

### **Reed Trust A #1-36**

### **36-28s-29w Gray,KS**

Start Date: 2017.03.01 @ 21:06:45

End Date: 2017.03.02 @ 05:29:15

Job Ticket #: 65667                      DST #: 3

Trilobite Testing, Inc  
PO Box 362 Hays, KS 67601  
ph: 785-625-4778 fax: 785-625-5620

Printed: 2017.03.06 @ 09:52:07



**TRILOBITE TESTING, INC.**

# DRILL STEM TEST REPORT

McCoy Petroleum Corp.

**36-28s-29w Gray, KS**

9342 E. Central  
Wichita, KS 67206

**Reed Trust A #1-36**

ATTN: Zach Wiele

Job Ticket: 65667

**DST#: 3**

Test Start: 2017.03.01 @ 21:06:45

## GENERAL INFORMATION:

Formation: **St Louis**

Deviated: No Whipstock: ft (KB)

Time Tool Opened: 23:34:45

Time Test Ended: 05:29:15

Test Type: Conventional Bottom Hole (Reset)

Tester: Brandon Turley

Unit No: 79

**Interval: 5201.00 ft (KB) To 5245.00 ft (KB) (TVD)**

Reference Elevations: 2780.00 ft (KB)

Total Depth: 5245.00 ft (KB) (TVD)

2769.00 ft (CF)

Hole Diameter: 7.88 inches Hole Condition: Good

KB to GR/CF: 11.00 ft

**Serial #: 8166 Outside**

Press@RunDepth: 93.85 psig @ 5202.00 ft (KB)

Capacity: 8000.00 psig

Start Date: 2017.03.01 End Date: 2017.03.02

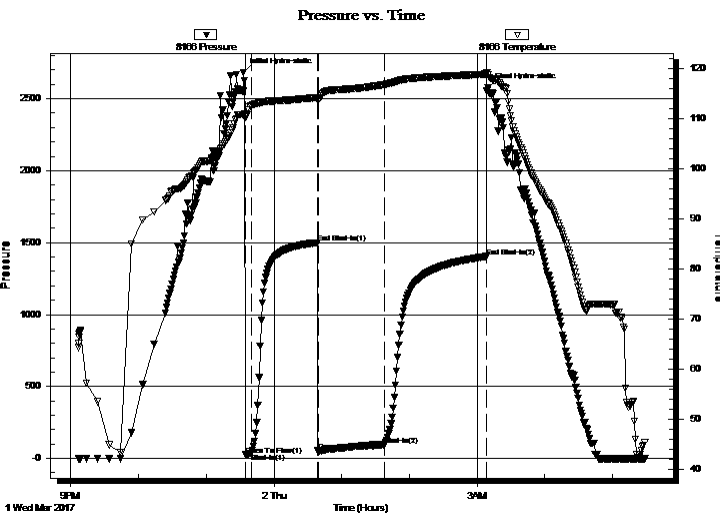
Last Calib.: 2017.03.02

Start Time: 21:06:50 End Time: 05:29:14

Time On Btm: 2017.03.01 @ 23:33:15

Time Off Btm: 2017.03.02 @ 03:09:45

**TEST COMMENT:** IF: 1/4" blow built to 3"  
IS: No return.  
FF: BOB in 16 min.  
FS: Surface blow built to 2"



## PRESSURE SUMMARY

Time (Min.)	Pressure (psig)	Temp (deg F)	Annotation
0	2683.13	110.73	Initial Hydro-static
2	25.32	110.26	Open To Flow (1)
7	36.63	112.52	Shut-In(1)
65	1499.52	114.15	End Shut-In(1)
67	47.78	113.73	Open To Flow (2)
125	93.85	116.70	Shut-In(2)
215	1403.45	118.81	End Shut-In(2)
217	2576.05	118.70	Final Hydro-static

## Recovery

Length (ft)	Description	Volume (bbl)
62.00	gocm 20%g 10%o 70%m	0.30
124.00	gocm 20%g 20%o 60%m	0.61
2.00	free oil 100%o	0.01
0.00	883 GIP	0.00

\* Recovery from multiple tests

## Gas Rates

	Choke (inches)	Pressure (psig)	Gas Rate (Mcf/d)







**TRILOBITE  
TESTING, INC.**

# DRILL STEM TEST REPORT

**TOOL DIAGRAM**

McCoy Petroleum Corp.

**36-28s-29w Gray, KS**

9342 E. Central  
Wichita, KS 67206

**Reed Trust A #1-36**

Job Ticket: 65667

**DST#: 3**

ATTN: Zach Wiele

Test Start: 2017.03.01 @ 21:06:45

## Tool Information

Drill Pipe:	Length: 4967.00 ft	Diameter: 3.80 inches	Volume: 69.67 bbl	Tool Weight:	2000.00 lb
Heavy Wt. Pipe:	Length: 0.00 ft	Diameter: 0.00 inches	Volume: 0.00 bbl	Weight set on Packer:	30000.00 lb
Drill Collar:	Length: 217.00 ft	Diameter: 2.25 inches	Volume: 1.07 bbl	Weight to Pull Loose:	110000.0 lb
			<u>Total Volume: 70.74 bbl</u>	Tool Chased	0.00 ft
Drill Pipe Above KB:	10.00 ft			String Weight: Initial	84000.00 lb
Depth to Top Packer:	5201.00 ft			Final	84000.00 lb
Depth to Bottom Packer:	ft				
Interval between Packers:	44.00 ft				
Tool Length:	71.00 ft				
Number of Packers:	2	Diameter: 6.75 inches			
Tool Comments:					

Tool Description	Length (ft)	Serial No.	Position	Depth (ft)	Accum. Lengths
------------------	-------------	------------	----------	------------	----------------

Stubb	1.00			5175.00	
Shut In Tool	5.00			5180.00	
Hydraulic tool	5.00			5185.00	
Jars	5.00			5190.00	
Safety Joint	2.00			5192.00	
Packer	5.00			5197.00	27.00 Bottom Of Top Packer
Packer	4.00			5201.00	
Stubb	1.00			5202.00	
Recorder	0.00	8875	Inside	5202.00	
Recorder	0.00	8166	Outside	5202.00	
Perforations	4.00			5206.00	
Change Over Sub	1.00			5207.00	
Drill Pipe	32.00			5239.00	
Change Over Sub	1.00			5240.00	
Bullnose	5.00			5245.00	44.00 Bottom Packers & Anchor

**Total Tool Length: 71.00**



**TRILOBITE  
TESTING, INC.**

# DRILL STEM TEST REPORT

**FLUID SUMMARY**

McCoy Petroleum Corp.

**36-28s-29w Gray,KS**

9342 E. Central  
Wichita, KS 67206

**Reed Trust A #1-36**

Job Ticket: 65667

**DST#: 3**

ATTN: Zach Wiele

Test Start: 2017.03.01 @ 21:06:45

## Mud and Cushion Information

Mud Type: Gel Chem

Cushion Type:

Oil API:

0 deg API

Mud Weight: 9.00 lb/gal

Cushion Length:

ft

Water Salinity:

0 ppm

Viscosity: 59.00 sec/qt

Cushion Volume:

bbbl

Water Loss: 6.79 in<sup>3</sup>

Gas Cushion Type:

Resistivity: 0.00 ohm.m

Gas Cushion Pressure:

psig

Salinity: 1800.00 ppm

Filter Cake: 1.00 inches

## Recovery Information

Recovery Table

Length ft	Description	Volume bbbl
62.00	gocm 20%g 10%o 70%m	0.305
124.00	gocm 20%g 20%o 60%m	0.610
2.00	free oil 100%o	0.010
0.00	883 GIP	0.000

Total Length: 188.00 ft

Total Volume: 0.925 bbl

Num Fluid Samples: 0

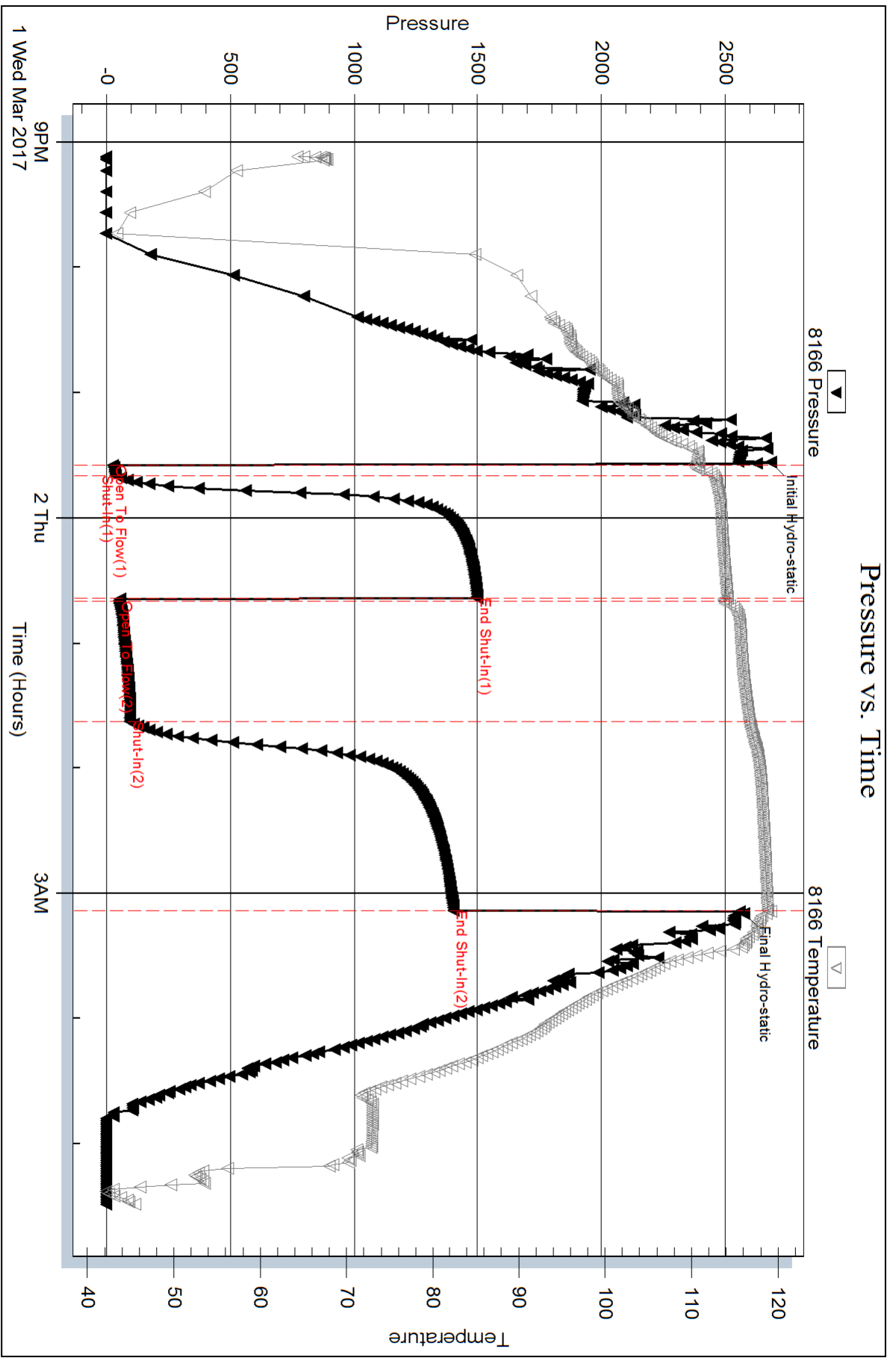
Num Gas Bombs: 0

Serial #:

Laboratory Name:

Laboratory Location:

Recovery Comments:



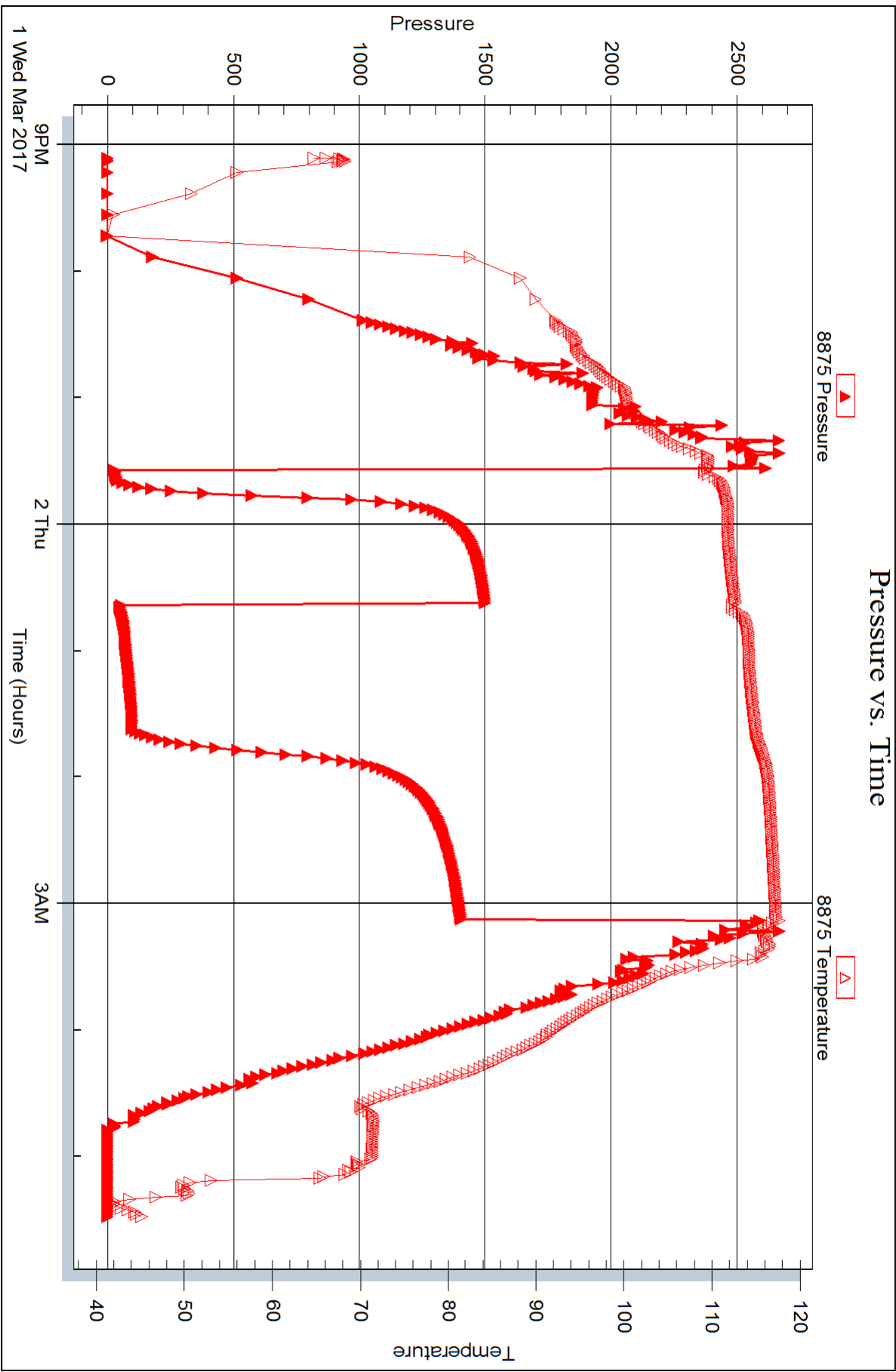
Serial #: 8875

Inside

McCoy Petroleum Corp.

Reed Trust A #1-36

DST Test Number: 3



Triobite Testing, Inc

Ref. No: 65667

Printed: 2017.03.06 @ 09:52:08



## DRILL STEM TEST REPORT

Prepared For: **McCoy Petroleum Corp.**

9342 E. Central  
Wichita, KS 67206

ATTN: Zach Wiele

### **Reed Trust A #1-36**

### **36-28s-29w Gray,KS**

Start Date: 2017.03.02 @ 16:25:54

End Date: 2017.03.03 @ 00:50:54

Job Ticket #: 65668                      DST #: 4

Trilobite Testing, Inc

PO Box 362 Hays, KS 67601

ph: 785-625-4778 fax: 785-625-5620

Printed: 2017.03.06 @ 09:51:33



**TRILOBITE TESTING, INC.**

# DRILL STEM TEST REPORT

McCoy Petroleum Corp.

**36-28s-29w Gray, KS**

9342 E. Central  
Wichita, KS 67206

**Reed Trust A #1-36**

ATTN: Zach Wiele

Job Ticket: 65668

**DST#: 4**

Test Start: 2017.03.02 @ 16:25:54

## GENERAL INFORMATION:

Formation: **St. Louis D**

Deviated: No Whipstock: ft (KB)

Time Tool Opened: 18:48:24

Time Test Ended: 00:50:54

Test Type: Conventional Bottom Hole (Reset)

Tester: Brandon Turley

Unit No: 79

**Interval: 5245.00 ft (KB) To 5280.00 ft (KB) (TVD)**

Reference Elevations: 2780.00 ft (KB)

Total Depth: 5280.00 ft (KB) (TVD)

2769.00 ft (CF)

Hole Diameter: 7.88 inches Hole Condition: Good

KB to GR/CF: 11.00 ft

**Serial #: 8166 Outside**

Press@RunDepth: 143.65 psig @ 5246.00 ft (KB)

Capacity: 8000.00 psig

Start Date: 2017.03.02

End Date:

2017.03.03

Last Calib.: 2017.03.03

Start Time: 16:25:59

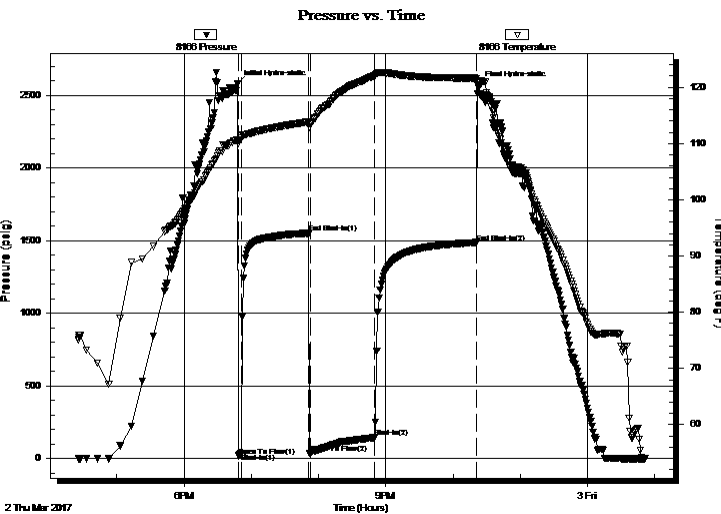
End Time:

00:50:53

Time On Btm: 2017.03.02 @ 18:47:54

Time Off Btm: 2017.03.02 @ 22:22:24

**TEST COMMENT:** IF: Surface blow built to 1"  
IS: No return.  
FF: Surface blow built to 8"  
FS: No return.



## PRESSURE SUMMARY

Time (Min.)	Pressure (psig)	Temp (deg F)	Annotation
0	2577.87	110.69	Initial Hydro-static
1	17.41	109.92	Open To Flow (1)
3	32.96	110.97	Shut-In(1)
64	1550.65	113.86	End Shut-In(1)
65	32.98	113.59	Open To Flow (2)
122	143.65	122.07	Shut-In(2)
213	1487.52	121.60	End Shut-In(2)
215	2564.97	120.87	Final Hydro-static

## Recovery

Length (ft)	Description	Volume (bbl)
124.00	mcw 90%w 10%m	0.61
155.00	nw 50%w 50%m	1.33

\* Recovery from multiple tests

## Gas Rates

Choke (inches)	Pressure (psig)	Gas Rate (Mcf/d)







**TRILOBITE  
TESTING, INC.**

# DRILL STEM TEST REPORT

**TOOL DIAGRAM**

McCoy Petroleum Corp.

**36-28s-29w Gray,KS**

9342 E. Central  
Wichita, KS 67206

**Reed Trust A #1-36**

Job Ticket: 65668

**DST#: 4**

ATTN: Zach Wiele

Test Start: 2017.03.02 @ 16:25:54

## Tool Information

Drill Pipe:	Length: 5032.00 ft	Diameter: 3.80 inches	Volume: 70.59 bbl	Tool Weight: 2000.00 lb
Heavy Wt. Pipe:	Length: 0.00 ft	Diameter: 0.00 inches	Volume: 0.00 bbl	Weight set on Packer: 30000.00 lb
Drill Collar:	Length: 217.00 ft	Diameter: 2.25 inches	Volume: 1.07 bbl	Weight to Pull Loose: 95000.00 lb
			<u>Total Volume: 71.66 bbl</u>	Tool Chased 0.00 ft
Drill Pipe Above KB:	31.00 ft			String Weight: Initial 84000.00 lb
Depth to Top Packer:	5245.00 ft			Final 84000.00 lb
Depth to Bottom Packer:	ft			
Interval between Packers:	35.00 ft			
Tool Length:	62.00 ft			
Number of Packers:	2	Diameter: 6.75 inches		

Tool Comments:

Tool Description	Length (ft)	Serial No.	Position	Depth (ft)	Accum. Lengths
------------------	-------------	------------	----------	------------	----------------

Stubb	1.00			5219.00	
Shut In Tool	5.00			5224.00	
Hydraulic tool	5.00			5229.00	
Jars	5.00			5234.00	
Safety Joint	2.00			5236.00	
Packer	5.00			5241.00	27.00 Bottom Of Top Packer
Packer	4.00			5245.00	
Stubb	1.00			5246.00	
Recorder	0.00	8875	Inside	5246.00	
Recorder	0.00	8166	Outside	5246.00	
Perforations	29.00			5275.00	
Bullnose	5.00			5280.00	35.00 Bottom Packers & Anchor

**Total Tool Length: 62.00**



**TRILOBITE  
TESTING, INC.**

**DRILL STEM TEST REPORT**

**FLUID SUMMARY**

McCoy Petroleum Corp.

**36-28s-29w Gray,KS**

9342 E. Central  
Wichita, KS 67206

**Reed Trust A #1-36**

Job Ticket: 65668

**DST#: 4**

ATTN: Zach Wiele

Test Start: 2017.03.02 @ 16:25:54

**Mud and Cushion Information**

Mud Type: Gel Chem

Cushion Type:

Oil API:

0 deg API

Mud Weight: 9.00 lb/gal

Cushion Length:

ft

Water Salinity:

64000 ppm

Viscosity: 53.00 sec/qt

Cushion Volume:

bbbl

Water Loss: 6.80 in<sup>3</sup>

Gas Cushion Type:

Resistivity: 0.00 ohm.m

Gas Cushion Pressure:

psig

Salinity: 2450.00 ppm

Filter Cake: 1.00 inches

**Recovery Information**

Recovery Table

Length ft	Description	Volume bbl
124.00	mcw 90%w 10%m	0.610
155.00	mw 50%w 50%m	1.327

Total Length: 279.00 ft      Total Volume: 1.937 bbl

Num Fluid Samples: 0

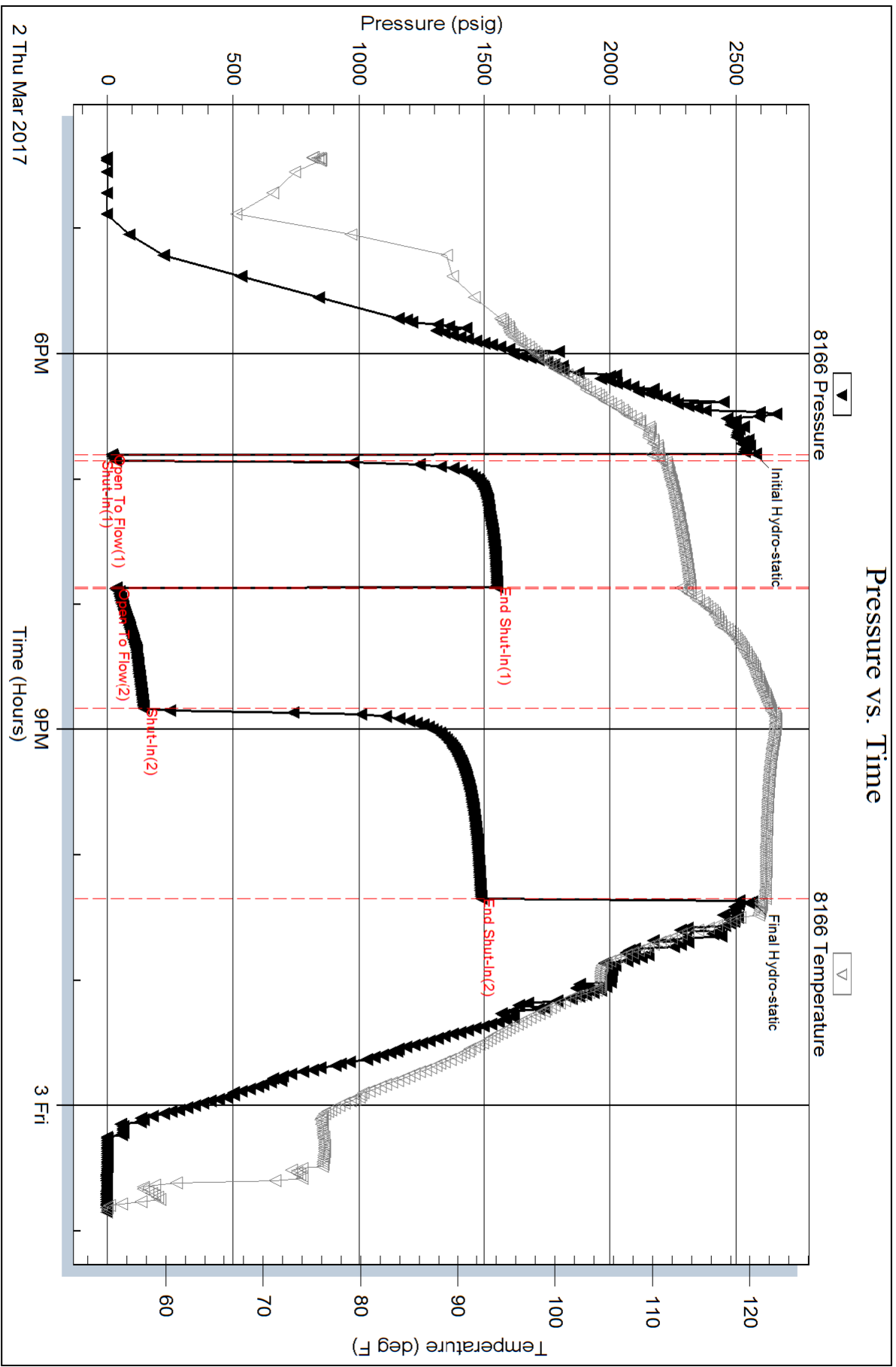
Num Gas Bombs: 0

Serial #:

Laboratory Name:

Laboratory Location:

Recovery Comments: .25@34=64000



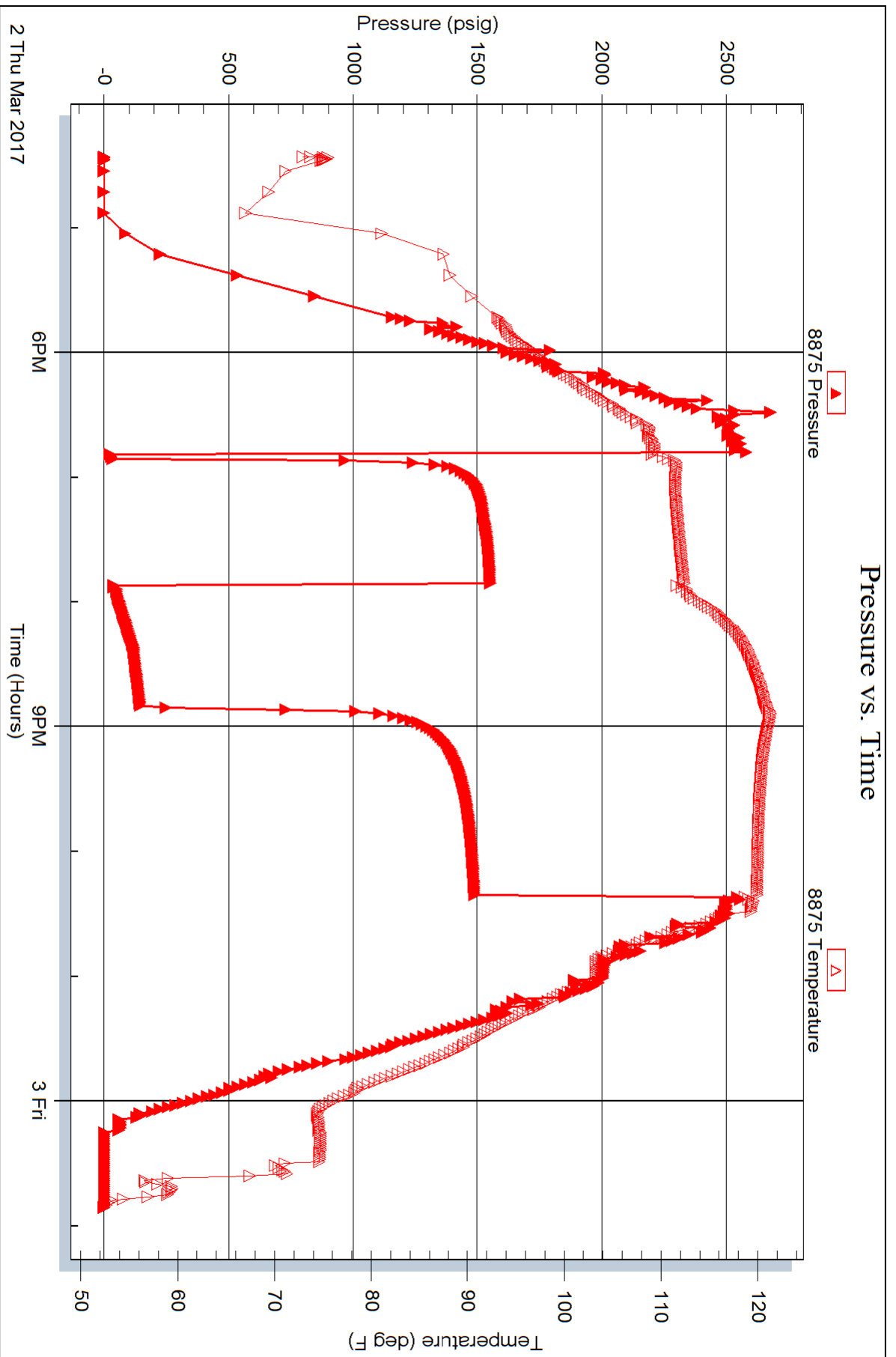
Serial #: 8875

Inside

McCoy Petroleum Corp.

Reed Trust A #1-36

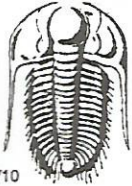
DST Test Number: 4



Trilobite Testing, Inc

Ref. No: 65668

Printed: 2017.03.06 @ 09:51:34



# TRILOBITE TESTING INC.

1515 Commerce Parkway • Hays, Kansas 67601

## Test Ticket

NO. **65665**

Well Name & No. Reed Trust A 1-36 Test No. 1 Date 2-28-17  
 Company Mcloy Petroleum Corp. Elevation 2780 KB 2769 GL  
 Address 9342 E. Central Wichita, KS 67206  
 Co. Rep / Geo. 28ch Wiebe Rig Sterling #4  
 Location: Sec. 36 Twp. 28 Rge. 29 Co. Gray State KS

Interval Tested 4880 4910 Zone Tested Pawnee  
 Anchor Length 30 Drill Pipe Run 4649 Mud Wt. 9.2  
 Top Packer Depth 4875 Drill Collars Run 217 Vis 56  
 Bottom Packer Depth 4880 Wt. Pipe Run — WL 6.4  
 Total Depth 4910 Chlorides 3500 ppm System LCM 2

Blow Description IF: 1/4 blow died to surface,  
FS: No return.  
FF: Surface blow built to 1/4 in 60.  
FS: No return.

Rec	Feet of	%gas	%oil	%water	%mud
<u>20</u>	<u>mud</u>			<u>100</u>	

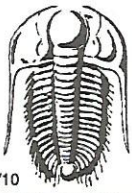
Rec Total 20 BHT 113 Gravity — API RW — @ — ° F Chlorides — ppm

(A) Initial Hydrostatic <u>2561</u>	<input checked="" type="checkbox"/> Test <u>1150</u>	T-On Location <u>00:00</u>
(B) First Initial Flow <u>17</u>	<input checked="" type="checkbox"/> Jars <u>250</u>	T-Started <u>2:00</u>
(C) First Final Flow <u>23</u>	<input checked="" type="checkbox"/> Safety Joint <u>75</u>	T-Open <u>4:22</u>
(D) Initial Shut-In <u>1238</u>	<input checked="" type="checkbox"/> Circ Sub <u>NIC</u>	T-Pulled <u>7:37</u>
(E) Second Initial Flow <u>25</u>	<input type="checkbox"/> Hourly Standby	T-Out <u>9:48</u>
(F) Second Final Flow <u>34</u>	<input checked="" type="checkbox"/> Mileage <u>190 - 142.50</u>	Comments <u>out of town</u>
(G) Final Shut-In <u>1360</u>	<input type="checkbox"/> Sampler	<u>pry,</u>
(H) Final Hydrostatic <u>2510</u>	<input type="checkbox"/> Straddle	<input type="checkbox"/> Ruined Shale Packer
Initial Open <u>15</u>	<input type="checkbox"/> Shale Packer	<input type="checkbox"/> Ruined Packer
Initial Shut-In <u>30</u>	<input type="checkbox"/> Extra Packer	<input type="checkbox"/> Extra Copies
Final Flow <u>60</u>	<input type="checkbox"/> Extra Recorder	Sub Total <u>0</u>
Final Shut-In <u>90</u>	<input type="checkbox"/> Day Standby	Total <u>1617.50</u>
	<input type="checkbox"/> Accessibility	MP/DST Disc't
	Sub Total <u>1617.50</u>	

Approved By [Signature] Our Representative [Signature]

Trilobite Testing Inc. shall not be liable for damaged of any kind of the property or personnel of the one for whom a test is made, or for any loss suffered or sustained, directly or indirectly, through the use of its equipment, or its statements or opinion concerning the results of any test, tools lost or damaged in the hole shall be paid for at cost by the party for whom the test is made.





# TRILOBITE TESTING INC.

1515 Commerce Parkway • Hays, Kansas 67601

## Test Ticket

NO. **65666**

Well Name & No. Reed Trust A. 1-36 Test No. 2 Date 3-1-17  
 Company McLoy Petroleum Corp Elevation 2780 KB 2769 GL  
 Address \_\_\_\_\_  
 Co. Rep / Geo. 29th Wick Rig Stearling #4  
 Location: Sec. 36 Twp. 28 Rge. 29 Co. Gray State KS

Interval Tested 5170 5201 Zone Tested St. Louis  
 Anchor Length \_\_\_\_\_ Drill Pipe Run 4936 Mud Wt. 9.3  
 Top Packer Depth \_\_\_\_\_ Drill Collars Run 217 Vis 58  
 Bottom Packer Depth 5170 Wt. Pipe Run \_\_\_\_\_ WL 7.6  
 Total Depth 5201 Chlorides 1850 ppm System LCM 2

Blow Description IF: BoB in 4 min.  
IS: No return.  
FK: BoB in 30 sec.  
F5: surface blow died in 30 min.

Rec	Feet of	%gas	%oil	%water	%mud
<u>20</u>	<u>oil</u>	<u>100</u>			
<u>62</u>	<u>90cm</u>	<u>10</u>	<u>10</u>	<u>80</u>	<u>80</u>
<u>62</u>	<u>mwc90</u>	<u>40</u>	<u>30</u>	<u>10</u>	<u>20</u>
	<u>2061 GIP</u>				

Rec Total 144 BHT 120 Gravity \_\_\_\_\_ API RW \_\_\_\_\_ @ \_\_\_\_\_ °F Chlorides \_\_\_\_\_ ppm

(A) Initial Hydrostatic 2644  Test 1250 T-On Location 00:50  
 (B) First Initial Flow 22  Jars 250 T-Started 2:26  
 (C) First Final Flow 25  Safety Joint 75 T-Open 4:58  
 (D) Initial Shut-In 1292  Circ Sub NIC T-Pulled 8:33  
 (E) Second Initial Flow 34  Hourly Standby \_\_\_\_\_ T-Out 11:05  
 (F) Second Final Flow 24  Mileage 190-142.50 Comments out of town  
 (G) Final Shut-In 1002  Sampler \_\_\_\_\_ pry  
 (H) Final Hydrostatic 2532  Straddle \_\_\_\_\_  
 Shale Packer \_\_\_\_\_  
 Shale Packer \_\_\_\_\_  
 Extra Packer \_\_\_\_\_  
 Extra Recorder \_\_\_\_\_  
 Day Standby \_\_\_\_\_  
 Accessibility \_\_\_\_\_  
 Sub Total 1717.50

Initial Open 5  
 Initial Shut-In 60  
 Final Flow 60  
 Final Shut-In 90

Sub Total 1717.50  
 Total 1717.50  
 MP/DST Disc't \_\_\_\_\_

Approved By [Signature] Our Representative [Signature]  
 Trilobite Testing Inc. shall not be liable for damaged of any kind of the property or personnel of the one for whom a test is made, or for any loss suffered or sustained, directly or indirectly, through the use of its equipment, or its statements or opinion concerning the results of any test, tools lost or damaged in the hole shall be paid for at cost by the party for whom the test is made.





# TRILOBITE TESTING INC.

1515 Commerce Parkway • Hays, Kansas 67601

## Test Ticket

NO. **65667**

Well Name & No. Reed Trust A 1-36 Test No. 3 Date 3-1-17  
 Company McCoy Petroleum Corp Elevation 2780 KB 2769 GL  
 Address \_\_\_\_\_  
 Co. Rep / Geo. 29ch Wiele Rig Sterling #4  
 Location: Sec. 36 Twp. 28 Rge. 29 Co. Gray State KS

Interval Tested 5201 5245 Zone Tested St Louis  
 Anchor Length 44 Drill Pipe Run 4967 Mud Wt. 9.3  
 Top Packer Depth 5196 Drill Collars Run 217 Vis 59  
 Bottom Packer Depth 5201 Wt. Pipe Run \_\_\_\_\_ WL 6.8  
 Total Depth 5245 Chlorides 1800 ppm System LCM 3 1/2

Blow Description IF: 1/4 blow built to 3.  
±5: No return.  
FF: BoB in 16 min.  
F3: surface blow built to 2.

Rec	Feet of	%gas	%oil	%water	%mud
<u>2</u>	<u>Free oil</u>	<u>100</u>			
<u>124</u>	<u>90cm</u>	<u>20</u>	<u>20</u>	<u>60</u>	
<u>62</u>	<u>90cm</u>	<u>20</u>	<u>10</u>	<u>70</u>	
_____	<u>883 GIP</u>				

Rec Total 188 BHT 118 Gravity \_\_\_\_\_ API RW \_\_\_\_\_ @ \_\_\_\_\_ °F Chlorides \_\_\_\_\_ ppm

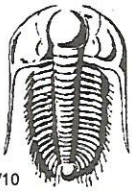
(A) Initial Hydrostatic 2683  Test 1250 T-On Location 20:25  
 (B) First Initial Flow 25  Jars 250 T-Started 21:06  
 (C) First Final Flow 36  Safety Joint 75 T-Open 23:34  
 (D) Initial Shut-In 1499  Circ Sub NIL T-Pulled 2:59  
 (E) Second Initial Flow 47  Hourly Standby \_\_\_\_\_ T-Out 5:30  
 (F) Second Final Flow 93  Mileage 190 - 142.50 Comments out of town  
 (G) Final Shut-In 1403  Sampler \_\_\_\_\_ pty.  
 (H) Final Hydrostatic 2576  Straddle \_\_\_\_\_  Ruined Shale Packer \_\_\_\_\_  
 Shale Packer \_\_\_\_\_  Ruined Packer \_\_\_\_\_  
 Extra Packer \_\_\_\_\_  Extra Copies \_\_\_\_\_  
 Extra Recorder \_\_\_\_\_ Sub Total \_\_\_\_\_  
 Day Standby \_\_\_\_\_ Total \_\_\_\_\_  
 Accessibility \_\_\_\_\_ MP/DST Disc't \_\_\_\_\_

Initial Open 5  
 Initial Shut-In 60  
 Final Flow 60  
 Final Shut-In 90

Approved By ZH Wisk Our Representative [Signature]

Trilobite Testing Inc. shall not be liable for damaged of any kind of the property or personnel of the one for whom a test is made, or for any loss suffered or sustained, directly or indirectly, through the use of its equipment, or its statements or opinion concerning the results of any test, tools lost or damaged in the hole shall be paid for at cost by the party for whom the test is made.





# TRILOBITE TESTING INC.

1515 Commerce Parkway • Hays, Kansas 67601

## Test Ticket

NO. **65668**

Well Name & No. Reed Trust A 1-36 Test No. 4 Date 3-2-17  
 Company McCoy Petroleum Corp Elevation 2780 KB 2769 GL  
 Address \_\_\_\_\_  
 Co. Rep / Geo. 29ch wiede Rig Sterling #4  
 Location: Sec. 36 Twp. 28 Rge. 29 Co. Gr94 State KS

Interval Tested ~~5245~~ 5280 Zone Tested St Louis D  
 Anchor Length 35 Drill Pipe Run 5032 Mud Wt. 9.3  
 Top Packer Depth 5240 Drill Collars Run 217 Vis 53  
 Bottom Packer Depth 5245 Wt. Pipe Run — WL 6.8  
 Total Depth 5280 Chlorides 2450 ppm System LCM 3

Blow Description IF: Surface blow built to 1.  
FS: No return.  
FF: Surface blow built to 8.  
FS: No return.

Rec	Feet of	%gas	%oil	%water	%mud
<u>155</u>	<u>MW</u>		<u>50</u>	<u>50</u>	
<u>124</u>	<u>MW</u>		<u>90</u>	<u>10</u>	
_____	_____	_____	_____	_____	_____
_____	_____	_____	_____	_____	_____
_____	_____	_____	_____	_____	_____

Rec Total 279 BHT 126 Gravity — API RW .25 @ 34 ° F Chlorides 64,000 ppm

(A) Initial Hydrostatic <u>2577</u>	<input checked="" type="checkbox"/> Test <u>1250</u>	T-On Location <u>15:20</u>
(B) First Initial Flow <u>17</u>	<input checked="" type="checkbox"/> Jars <u>250</u>	T-Started <u>16:25</u>
(C) First Final Flow <u>32</u>	<input checked="" type="checkbox"/> Safety Joint <u>75</u>	T-Open <u>18:50</u>
(D) Initial Shut-In <u>1550</u>	<input checked="" type="checkbox"/> Circ Sub <u>NIL</u>	T-Pulled <u>22:23</u>
(E) Second Initial Flow <u>32</u>	<input type="checkbox"/> Hourly Standby _____	T-Out <u>00:53</u>
(F) Second Final Flow <u>143</u>	<input checked="" type="checkbox"/> Mileage <u>190 - 285</u>	Comments <u>out of town</u>
(G) Final Shut-In <u>1487</u>	<input type="checkbox"/> Sampler _____	<u>pry</u>
(H) Final Hydrostatic <u>2564</u>	<input type="checkbox"/> Straddle _____	<u>loaded 3/4 7:45</u>
Initial Open <u>3</u>	<input type="checkbox"/> Shale Packer _____	<input type="checkbox"/> Ruined Shale Packer _____
Initial Shut-In <u>60</u>	<input type="checkbox"/> Shale Packer _____	<input type="checkbox"/> Ruined Packer _____
Final Flow <u>60</u>	<input type="checkbox"/> Extra Packer _____	<input type="checkbox"/> Extra Copies _____
Final Shut-In <u>90</u>	<input type="checkbox"/> Extra Recorder _____	Sub Total <u>0</u>
	<input type="checkbox"/> Day Standby _____	Total <u>1860</u>
	<input type="checkbox"/> Accessibility _____	MP/DST Disc't _____
	Sub Total <u>1860</u>	

Approved By [Signature] Our Representative [Signature]

Trilobite Testing Inc. shall not be liable for damaged of any kind of the property or personnel of the one for whom a test is made, or for any loss suffered or sustained, directly or indirectly, through the use of its equipment, or its statements or opinion concerning the results of any test, tools lost or damaged in the hole shall be paid for at cost by the party for whom the test is made.