



**Natural Gas • Crude Oil
Exploration & Production**

McCOY PETROLEUM CORPORATION

Wichita, Kansas

Scale 1:240 (5"=100') Imperial
Measured Depth Log

Well Name: Reed Trust 'A' #1-36
API: 15-069-20498-00-00
Location: Sec. 36 - T28S - R29W
License Number: #5003
Spud Date: 02-22-2017
Surface Coordinates: C NE NE
660' FNL & 660' FEL
Bottom Hole Coordinates:
Ground Elevation (ft): 2769' K.B. Elevation (ft): 2780'
Logged Interval (ft): Surface To: 5500' Total Depth (ft): 5500'
Formation: Mississippian
Type of Drilling Fluid: Chemical/Polymer/Gel

Region: GRAY CO., KS
Drilling Completed: 03-03-2017 @ 4:21PM

Printed by MudLog from WellSight Systems 1-800-447-1534 www.WellSight.com

OPERATOR

Company: McCoy Petroleum Corporation, KCC License #5003
Address: 9342 E Central
Wichita, KS 67206

GEOLOGIST

Name: Zach Wiele
Company: McCoy Petroleum Corporation
Address: 9342 E. Central
Wichita, KS 67206

Casing & Deviation Surveys:

Surface Casing:

Spud at 5:00 pm on 02/22/17. Drilled 12-1/4" to 1781'. Ran 43 joints of new 24#, 8-5/8" casing. Tallied 1763.75' with 1' GS. Set at 1776.05' KB. Welded straps on bottom 3 joints, tacked 2 others plus 5 top collars. Centralizers (3) on joints 1,3,5. Float insert in top of collar. SJ = 40.20'. Basket on top of #7. Cemented with 500 sks AMD Lite; 3% cc, 1/2# FS & tailed with 200 sks Class A with 2% CC & 1/4# FS. Cement did circulate. Plug down at 9:15 am on 02/24/17. BJ Services Cementing ticket #LIB1702240920.

DRILL STEM TEST

DST #1 (4880' - 4910') 15"-30"-60"-90"
IF: 1/4 Blw died to surface IS: No return
FF: Surface blow built to 1/4 FS: No return
IH = 2561# FH = 2510#
IF = 17-26# FF = 24-34#
ISIP = 1239# FSIP = 1360#
TEMP = 114 Deg F

DST #2 (5170' - 5201') 5"-60"-60"-90"
IF: BOB in 4 min. IS: No return.
FF: BOB in 30 sec. FS: Surface blw died in 30"
Rec: 2061' GIP, 20' 100% Oil, 62' gocm (10%g10%o80%m), 62' mw cgo (40%g30%o10%w20%)m
IH = 2645# FH = 2533#
IF = 23-34# FF = 25-74#
ISIP = 1292# FSIP = 1003#
TEMP = 120 Deg F

DST #3 (5201' - 5245') 5" - 60" - 60" - 90"
IF: 1/4 blw blt to 3 IS: No Return
FF: BOB in 16" FS: Surface blw blt to 2
Rec: 833' GIP, 188' TF, 2' free oil (100%o), 124' gocm (20%g,20%o,60%m), 62' gocm (20%g,10%o,70%m)
IH = 2683# FH = 2576#
IF = 25-48# FF = 37-94#
ISIP = 1500# FSIP = 1403#
TEMP = 119 Deg F

DST #4 (5245'-5280') 3"-60"-60"-90"
IF: Surface Blw 1" IS: No Return
FF: Surface Blw Built to 8" FS: No Return
Rec: 155' mw (50%w50%m), 124' mcw (90%w10%m)
IH = 2578# FH = 2565#
IF = 17-33# FF = 33-144#
ISIP = 1551# FSIP = 1488#
TEMP = 121 Deg F



DRILL STEM TEST REPORT

McCoy Petroleum Corp.
 36-28-29 Gray, Ks
Reed Trust A 1-36
 Job Ticket: 65955 DSTR:1
 Test Start: 2017.02.28 @ 02:00:50
 ATTN: Zach Wiele



DRILL STEM TEST REPORT

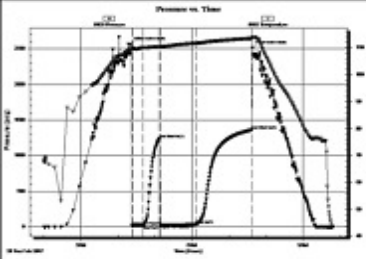
McCoy Petroleum Corp.
 36-28-29 Gray, Ks
Reed Trust A 1-36
 Job Ticket: 65999 DSTR:2
 Test Start: 2017.03.01 @ 02:26:43
 ATTN: Zach Wiele

GENERAL INFORMATION:

Formation: **Pawnee**
 Deviated: No Whipstock ft (KB)
 Time Tool Opened: 04:23:50
 Time Test Ended: 08:47:50
 Interval: **4880.00 ft (KB) To 4910.00 ft (KB) (TVD)**
 Total Depth: **4910.00 ft (KB) (TVD)**
 Hole Diameter: **7.88 inches**-hole Condition: Good
 Reference Elevations: 2780.00 ft (KB)
 2769.00 ft (DP)
 KB to GRFCF: 11.00 ft

Serial #: **8166** Outside
 Press@RunDepth: 34.45 psig @ 4881.00 ft (KB)
 Start Date: 2017.02.28 End Date: 2017.02.28
 Start Time: 02:00:55 End Time: 08:47:49
 Capacity: 8000.00 psig
 Last Calc.: 2017.02.28
 Time On Btm: 2017.02.28 @ 04:20:50
 Time Off Btm: 2017.02.28 @ 07:37:50

TEST COMMENT: F: 1/4 blow died to surface.
 S: No return.
 FF: Surface blow built to 1/4.
 FS: No return.



PRESSURE SUMMARY

Time (Min.)	Pressure (psig)	Temp (deg F)	Annotation
0	2561.03	109.57	Initial Hydro-static
3	17.49	109.80	Open To Flow (1)
20	23.73	110.01	Shut-In(1)
47	1236.89	110.45	End Shut-In(1)
48	25.93	110.36	Open To Flow (2)
106	34.45	111.66	Shut-In(2)
196	1360.42	113.48	End Shut-In(2)
197	2510.24	113.91	Final Hydro-static

Length (ft)	Description	Volume (BO)
20.00	mud 100%/o	0.10

Gas Rates

Length (ft)	Choke (inches)	Pressure (psig)	Gas Rate (MDD)
62.00	new cgo 40%g 35%w 10%w 20%v		0.30
62.00	gcsm 10%g 10%w 80%v		0.30
20.00	oil 100%o		0.10
0.00	2061 GP		0.00

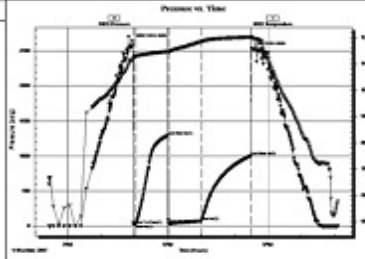
*Recovery from multiple tests

GENERAL INFORMATION:

Formation: **St. Louis**
 Deviated: No Whipstock ft (KB)
 Time Tool Opened: 04:56:13
 Time Test Ended: 11:06:13
 Interval: **5170.00 ft (KB) To 5201.00 ft (KB) (TVD)**
 Total Depth: **5201.00 ft (KB) (TVD)**
 Hole Diameter: **7.88 inches**-hole Condition: Good
 Reference Elevations: 2780.00 ft (KB)
 2769.00 ft (DP)
 KB to GRFCF: 11.00 ft

Serial #: **8166** Outside
 Press@RunDepth: 74.31 psig @ 5171.00 ft (KB)
 Start Date: 2017.03.01 End Date: 2017.03.01
 Start Time: 02:26:48 End Time: 11:06:13
 Capacity: 8000.00 psig
 Last Calc.: 2017.03.01
 Time On Btm: 2017.03.01 @ 04:56:13
 Time Off Btm: 2017.03.01 @ 08:30:43

TEST COMMENT: F: BOB in 4 min.
 S: No return.
 FF: BOB in 30 sec.
 FS: Surface blow died in 30 min.



PRESSURE SUMMARY

Time (Min.)	Pressure (psig)	Temp (deg F)	Annotation
0	2644.57	111.17	Initial Hydro-static
2	22.87	112.18	Open To Flow (1)
7	25.29	112.85	Shut-In(1)
64	1262.47	114.71	End Shut-In(1)
65	34.22	114.34	Open To Flow (2)
125	74.31	116.47	Shut-In(2)
213	1002.62	120.17	End Shut-In(2)
215	2532.93	120.35	Final Hydro-static

Length (ft)	Description	Volume (BO)
62.00	new cgo 40%g 35%w 10%w 20%v	0.30
62.00	gcsm 10%g 10%w 80%v	0.30
20.00	oil 100%o	0.10
0.00	2061 GP	0.00

*Recovery from multiple tests



DRILL STEM TEST REPORT

McCoy Petroleum Corp.
 36-28-29 Gray, Ks
Reed Trust A 1-36
 Job Ticket: 65997 DSTR:3
 Test Start: 2017.03.01 @ 21:06:45
 ATTN: Zach Wiele



DRILL STEM TEST REPORT

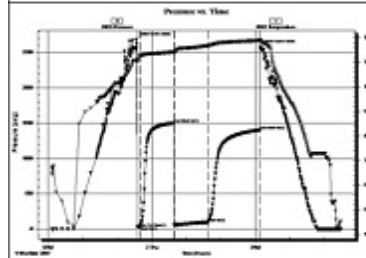
McCoy Petroleum Corp.
 36-28-29 Gray, Ks
Reed Trust A 1-36
 Job Ticket: 65998 DSTR:4
 Test Start: 2017.03.02 @ 16:25:54
 ATTN: Zach Wiele

GENERAL INFORMATION:

Formation: **St. Louis**
 Deviated: No Whipstock ft (KB)
 Time Tool Opened: 23:34:45
 Time Test Ended: 05:29:15
 Interval: **5201.00 ft (KB) To 5245.00 ft (KB) (TVD)**
 Total Depth: **5245.00 ft (KB) (TVD)**
 Hole Diameter: **7.88 inches**-hole Condition: Good
 Reference Elevations: 2780.00 ft (KB)
 2769.00 ft (DP)
 KB to GRFCF: 11.00 ft

Serial #: **8166** Outside
 Press@RunDepth: 93.85 psig @ 5202.00 ft (KB)
 Start Date: 2017.03.01 End Date: 2017.03.02
 Start Time: 21:06:50 End Time: 05:29:14
 Capacity: 8000.00 psig
 Last Calc.: 2017.03.02
 Time On Btm: 2017.03.01 @ 23:33:15
 Time Off Btm: 2017.03.02 @ 03:09:45

TEST COMMENT: F: 1/4 blow built to 3.
 S: No return.
 FF: BOB in 16 min.
 FS: Surface blow built to 2.



PRESSURE SUMMARY

Time (Min.)	Pressure (psig)	Temp (deg F)	Annotation
0	2565.13	110.73	Initial Hydro-static
2	25.32	110.26	Open To Flow (1)
7	36.63	112.52	Shut-In(1)
65	1499.52	114.15	End Shut-In(1)
67	47.78	113.73	Open To Flow (2)
125	93.85	116.70	Shut-In(2)
215	1405.45	116.81	End Shut-In(2)
217	2576.05	116.70	Final Hydro-static

Length (ft)	Description	Volume (BO)
62.00	gcsm 20%g 10%w 70%v	0.30
124.00	gcsm 20%g 20%w 60%v	0.61
2.00	free oil 100%o	0.01
0.00	863 GP	0.00

Gas Rates

Length (ft)	Choke (inches)	Pressure (psig)	Gas Rate (MDD)
124.00	new 90%w 10%v		0.61
155.00	new 50%w 50%v		1.33

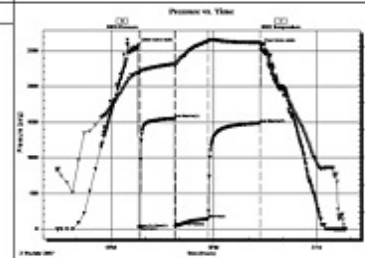
*Recovery from multiple tests

GENERAL INFORMATION:

Formation: **St. Louis D**
 Deviated: No Whipstock ft (KB)
 Time Tool Opened: 10:46:24
 Time Test Ended: 00:50:54
 Interval: **5245.00 ft (KB) To 5293.00 ft (KB) (TVD)**
 Total Depth: **5293.00 ft (KB) (TVD)**
 Hole Diameter: **7.88 inches**-hole Condition: Good
 Reference Elevations: 2780.00 ft (KB)
 2769.00 ft (DP)
 KB to GRFCF: 11.00 ft

Serial #: **8166** Outside
 Press@RunDepth: 143.65 psig @ 5246.00 ft (KB)
 Start Date: 2017.03.02 End Date: 2017.03.03
 Start Time: 16:25:59 End Time: 00:50:53
 Capacity: 8000.00 psig
 Last Calc.: 2017.03.03
 Time On Btm: 2017.03.02 @ 16:47:54
 Time Off Btm: 2017.03.02 @ 22:22:24

TEST COMMENT: F: Surface blow built to 1.
 S: No return.
 FF: Surface blow built to 5.
 FS: No return.



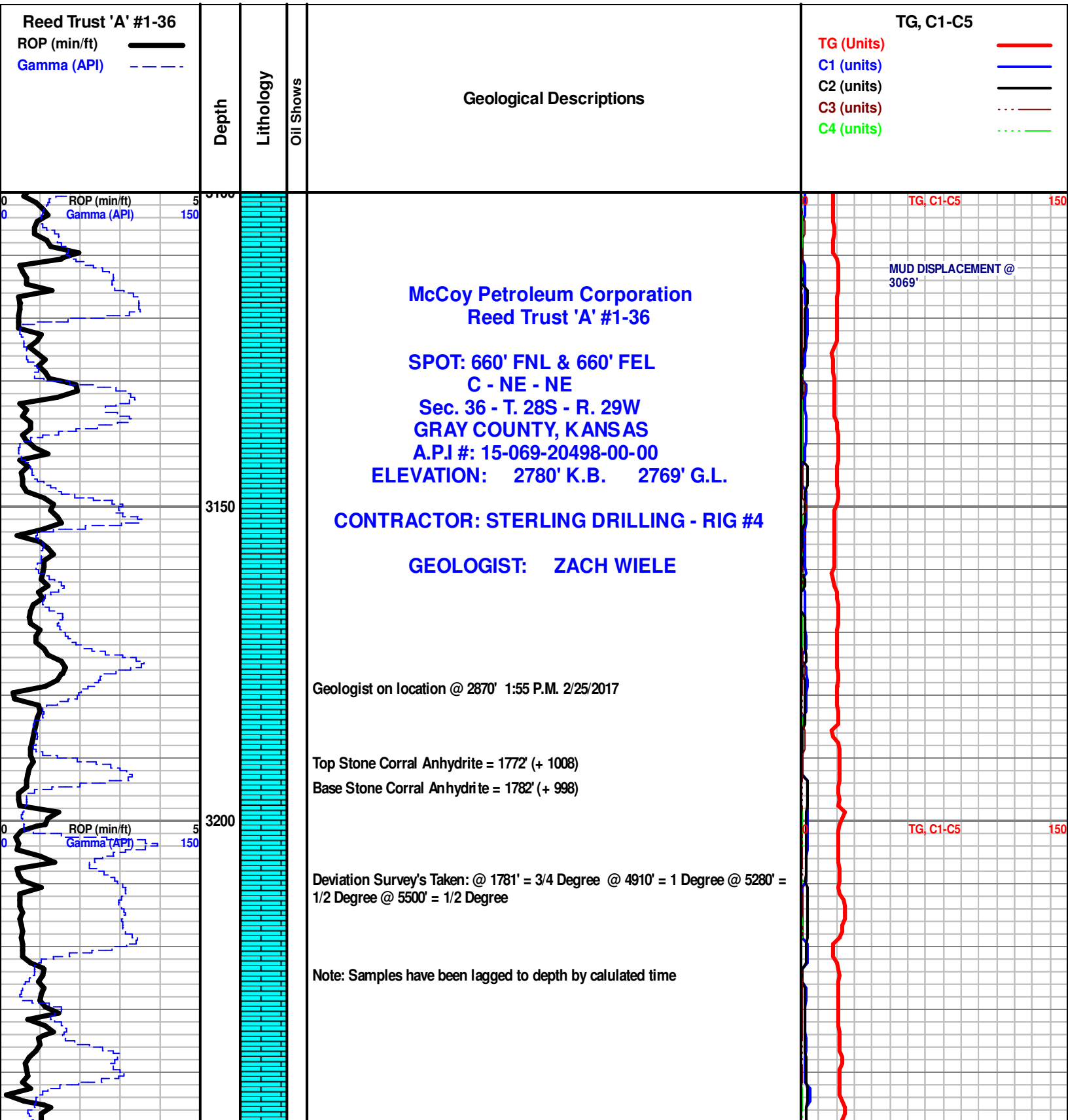
PRESSURE SUMMARY

Time (Min.)	Pressure (psig)	Temp (deg F)	Annotation
0	2577.87	110.69	Initial Hydro-static
1	17.41	109.92	Open To Flow (1)
3	32.98	110.97	Shut-In(1)
64	1550.65	113.86	End Shut-In(1)
65	32.98	113.59	Open To Flow (2)
122	143.65	122.07	Shut-In(2)
213	1487.52	121.80	End Shut-In(2)
215	2564.97	120.87	Final Hydro-static

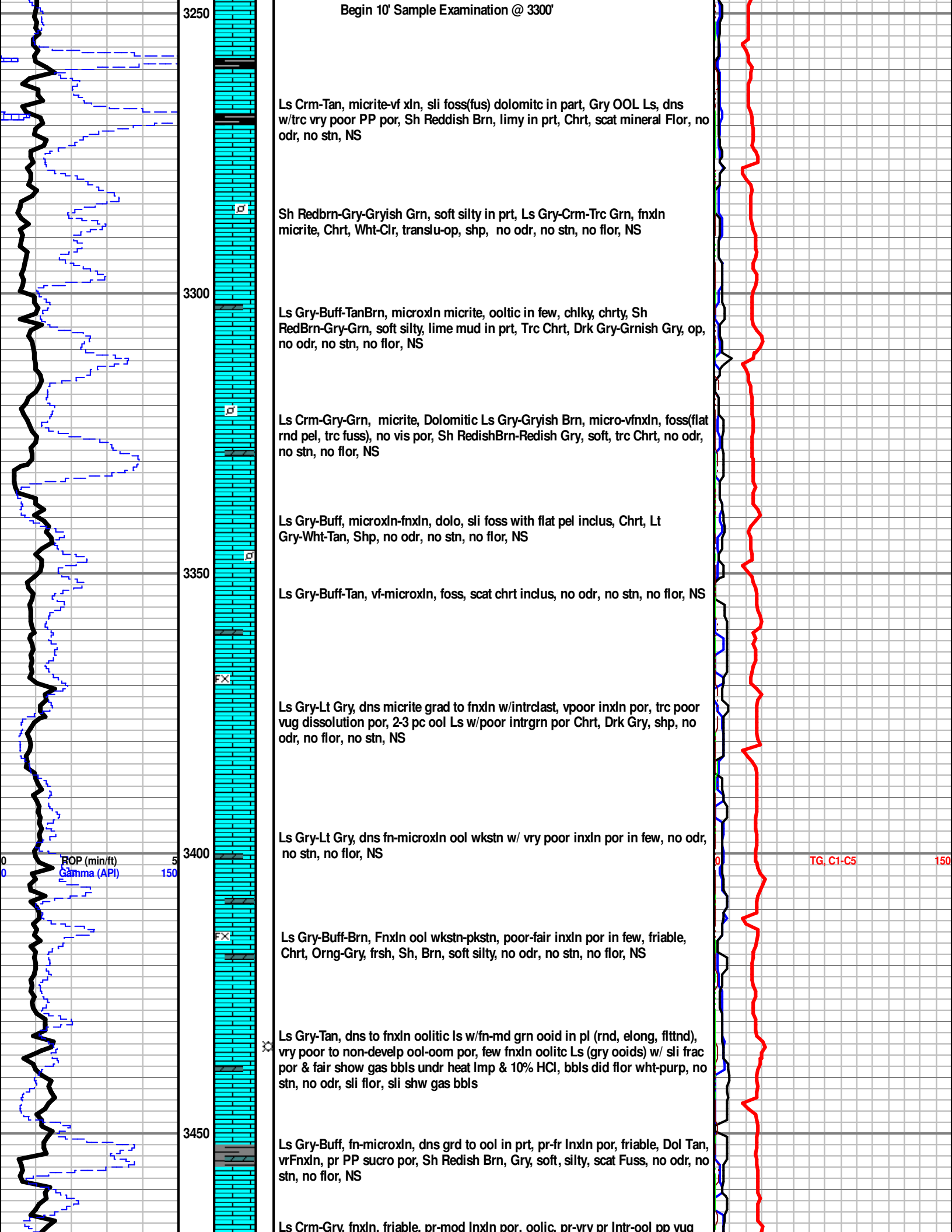
Length (ft)	Description	Volume (BO)
124.00	new 90%w 10%v	0.61
155.00	new 50%w 50%v	1.33

*Recovery from multiple tests

LITHOLOGY		ROCK TYPES		TEXTURE		OIL SHOW	
	Chr-grn sh		Gyp		Ss		Chalky
	Anhy		Igne		Congl		Cryxln
	Bent		Lmst		Carb sh		Earthy
	Brec		Mrlst		Grn sh		Finexln
	Cht		Salt		Redbrn sh		Grainst
	Clyst		Shale		Gry sh		Lithogr
	Coal		Shcol				Microxln
	Dol		Shgy				Mudst
			Sltst		Boundst		Packst
							Wackest
							Even
							Spotted
							Ques
							Gas
							Dead



Begin 10' Sample Examination @ 3300'



Ls Crm-Tan, micrite-vf xln, sli foss(fus) dolomitic in part, Gry OOL Ls, dns w/trc vry poor PP por, Sh Reddish Brn, limy in prt, Chrt, scat mineral Flor, no odr, no stn, NS

Sh Redbrn-Gry-Gryish Grn, soft silty in prt, Ls Gry-Crm-Trc Grn, fnxln micrite, Chrt, Wht-Clr, transl-u-op, shp, no odr, no stn, no flor, NS

Ls Gry-Buff-TanBrn, microxln micrite, oolitic in few, chlky, chrt, Sh RedBrn-Gry-Grn, soft silty, lime mud in prt, Trc Chrt, Drk Gry-Grnish Gry, no odr, no stn, no flor, NS

Ls Crm-Gry-Grn, micrite, Dolomitic Ls Gry-Gryish Brn, micro-vfnxn, foss(flat rnd pel, trc fuss), no vis por, Sh RedishBrn-Redish Gry, soft, trc Chrt, no odr, no stn, no flor, NS

Ls Gry-Buff, microxln-fnxln, dolo, sli foss with flat pel inclus, Chrt, Lt Gry-Wht-Tan, Shp, no odr, no stn, no flor, NS

Ls Gry-Buff-Tan, vf-microxln, foss, scat chrt inclus, no odr, no stn, no flor, NS

Ls Gry-Lt Gry, dns micrite grad to fnxln w/intrclast, vpoor inxln por, trc poor vug dissolution por, 2-3 pc ool Ls w/poor intrgrn por Chrt, Drk Gry, shp, no odr, no flor, no stn, NS

Ls Gry-Lt Gry, dns fn-microxln ool wkstn w/ vry poor inxln por in few, no odr, no stn, no flor, NS

Ls Gry-Buff-Brn, Fnxln ool wkstn-pkstn, poor-fair inxln por in few, friable, Chrt, Orng-Gry, frsh, Sh, Brn, soft silty, no odr, no stn, no flor, NS

Ls Gry-Tan, dns to fnxln oolitic Ls w/fn-md grn ooid in pl (rnd, elong, fltnd), vry poor to non-develp ool-oom por, few fnxln oolitic Ls (gry ooids) w/ sli frac por & fair show gas bbls undr heat Imp & 10% HCl, bbls did flor wht-purp, no stn, no odr, sli flor, sli shw gas bbls

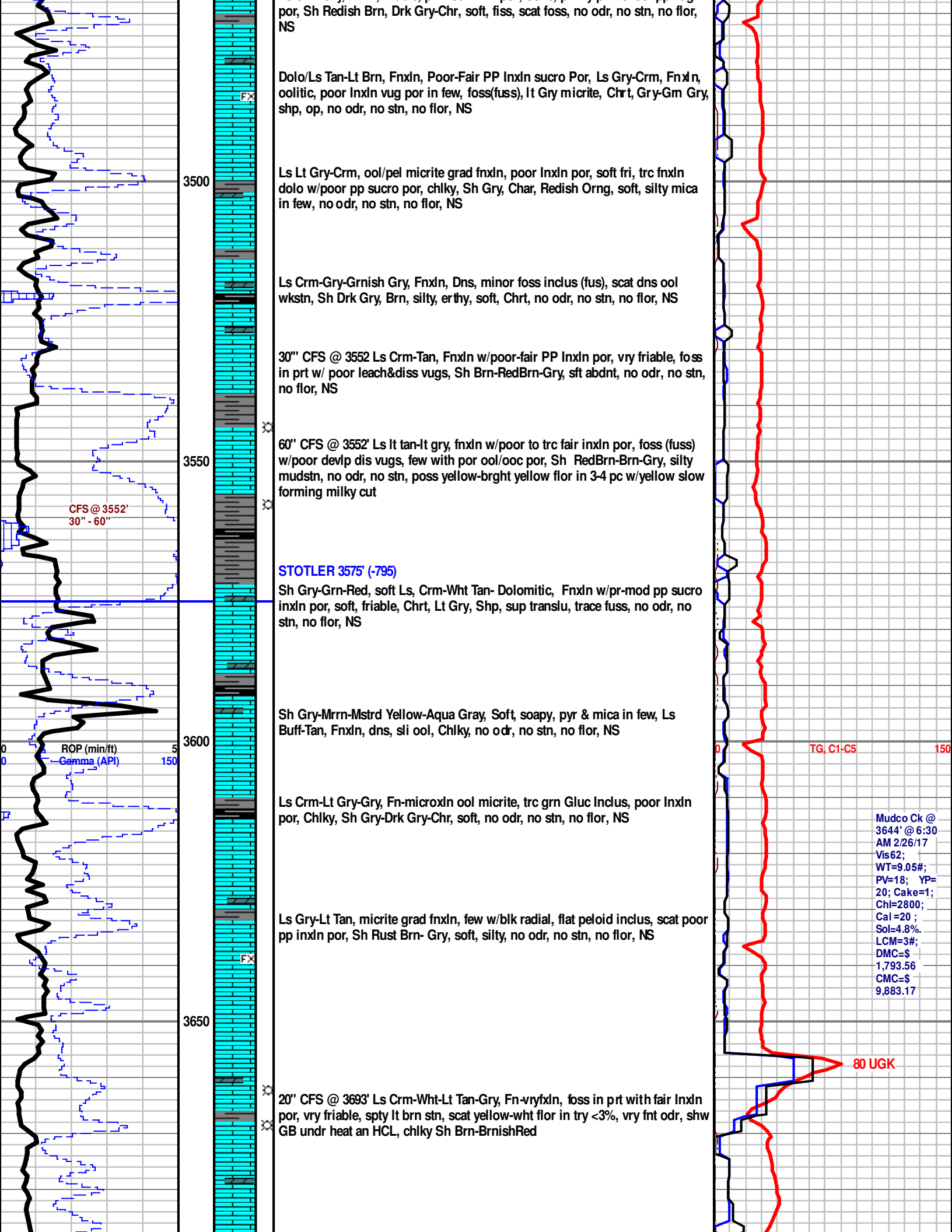
Ls Gry-Buff, fn-microxln, dns grd to ool in prt, pr-fr lnxln por, friable, Dol Tan, vrFnxln, pr PP sucro por, Sh Redish Brn, Gry, soft, silty, scat Fuss, no odr, no stn, no flor, NS

Ls Crm-Gry, fnxln, friable, pr-mod lnxln por, oolitic, pr-vry pr lnt-ool po vug

ROP (min/ft)
Gamma (API)

TG, C1-C5

150



por, Sh Redish Brn, Drk Gry-Chr, soft, fiss, scat foss, no odr, no stn, no flor, NS

Dolo/Ls Tan-Lt Brn, Fnxln, Poor-Fair PP Inxln sucro Por, Ls Gry-Crm, Fnxln, oolitic, poor Inxln vug por in few, foss(fuss), Lt Gry micrite, Chrt, Gry-Gm Gry, shp, op, no odr, no stn, no flor, NS

Ls Lt Gry-Crm, ool/pel micrite grad fnxln, poor Inxln por, soft fri, trc fnxln dolo w/poor pp sucro por, chlky, Sh Gry, Char, Redish Orng, soft, silty mica in few, no odr, no stn, no flor, NS

Ls Crm-Gry-Grnish Gry, Fnxln, Dns, minor foss inclus (fus), scat dns ool wkstn, Sh Drk Gry, Brn, silty, erthy, soft, Chrt, no odr, no stn, no flor, NS

30" CFS @ 3552 Ls Crm-Tan, Fnxln w/poor-fair PP Inxln por, vry friable, foss in prt w/ poor leach&diss vugs, Sh Brn-RedBrn-Gry, sft abndnt, no odr, no stn, no flor, NS

60" CFS @ 3552' Ls Lt tan-lt gry, fnxln w/poor to trc fair inxln por, foss (fuss) w/poor devlp dis vugs, few with por ool/ooc por, Sh RedBrn-Brn-Gry, silty mudstn, no odr, no stn, poss yellow-brght yellow flor in 3-4 pc w/yellow slow forming milky cut

CFS @ 3552'
30" - 60"

STOTLER 3575' (-795)

Sh Gry-Grn-Red, soft Ls, Crm-Wht Tan- Dolomitic, Fnxln w/pr-mod pp sucro inxln por, soft, friable, Chrt, Lt Gry, Shp, sup translu, trace fuss, no odr, no stn, no flor, NS

Sh Gry-Mrrn-Mstrd Yellow-Aqua Gray, Soft, soapy, pyr & mica in few, Ls Buff-Tan, Fnxln, dns, sli ool, Chlky, no odr, no stn, no flor, NS

ROP (min/ft)
Gamma (API)

TG, C1-C5 150

Ls Crm-Lt Gry-Gry, Fn-microxln ool micrite, trc grn Gluc Inclus, poor Inxln por, Chlky, Sh Gry-Drk Gry-Chr, soft, no odr, no stn, no flor, NS

Mudco Ck @
3644' @ 6:30
AM 2/26/17
Vis62;
WT=9.05#;
PV=18; YP=
20; Cake=1;
Chl=2800;
Cal=20 ;
Sol=4.8%
LCM=3#;
DMC=\$
1,793.56
CMC=\$
9,883.17

Ls Gry-Lt Tan, micrite grad fnxln, few w/blk radial, flat peloid inclus, scat poor pp inxln por, Sh Rust Brn- Gry, soft, silty, no odr, no stn, no flor, NS

3650

80 UGK

20" CFS @ 3693' Ls Crm-Wht-Lt Tan-Gry, Fn-vryfxln, foss in prt with fair Inxln por, vry friable, spty lt brn stn, scat yellow-wht flor in try <3%, vry fnt odr, shw GB undr heat an HCL, chlky Sh Brn-BrnishRed

CFS @ 3693'
20"- 40"

3700

40' CFS @ 3693' Ls, Crm-Wht, Fnxln, fair lnxln por, vry friable, foss in prt (fuss), w/spty lt brn stn & dull flor, Ool Ls (2-3 pc) Tan, poor ool por, dull yellow-wht flor, Dol Gry, Fnxln, w/good sucrr por, slit flor, sli shw GB undr heat afr crushed, GB did flor,

⊗ Ls Crm-Lt Gry, microxln micrte, 1 pc w/ Crm Fnxln w/vry Fn peloid inclus, good intra oom/vug por w gd shw GBB after heat & 10%HCl, grsy residual sheen, slit flor, no odr, shw GB (1 pc)

Ls Gry-Wht, dns micrite grd Fnxln, pr lnxln/Frac por, fri w/trc Gluc Inklus, Sh Gry-RedBrn, soft, no odr, no stn, no flor, NS

FX

Ls Crm-Gry-Tan, micrite grd to fnxln w/foss & vry fn pel inclus, fri with poor-fr intrapart/vug por(3-4 pc) , Chlky, Sh Gry, silty, soft, no odr, no flor, no stn, NS

3750

Ls Fn-Microxln, Dns gra pr pp lnxln por, few sml diss vugs, Dolmitic in part, Scat foss and ool inclus (fuss, crin), 1 pc w/gd oom vug leached por, Sh Blk Carb, Gry, Char, soft fiss, no odr, no flor, no stn NS

Ls Gry Brn-Gry, Fnxln, dns no vis por, Dol, Crm-Tan, Fnxln dns, Chrt, Drk Gry-Blk, op, frsh, Sh Gry, soft, smth, no odr, no stn, no flor, NS

3800

Ls Wht-Gry, dns micrite grad fnxln, no vis por, trc pyr inclus, scat foss, Chrt, Drk Gry-Blk, Shrp, No odr, no flor, no stn, NS

ROP (min/ft)

Gamma (API)

5

150

VIS: 58
WT: 9.1
LCM: 3#

TG, C1-C5

150

Ls Tan- Gry, dns mi crite grad Fnxln no vis por, abnt fus, retentive crystal fabric & foss frags, Chlky, Chrt, Lt Gry-Wht, sup translu, shp, Sh Gry, soft, no odr, no stn, no flor, NS

Ls Tan Brn-Gry, Fnxln, Pr lnxln Por, minor factur por in few, trc ool & intraclast inclus, trc pyr specs, mostly dns, Sh Gry-Blk Carb, soft fiss, no odr, no stn, no flor, NS

3850

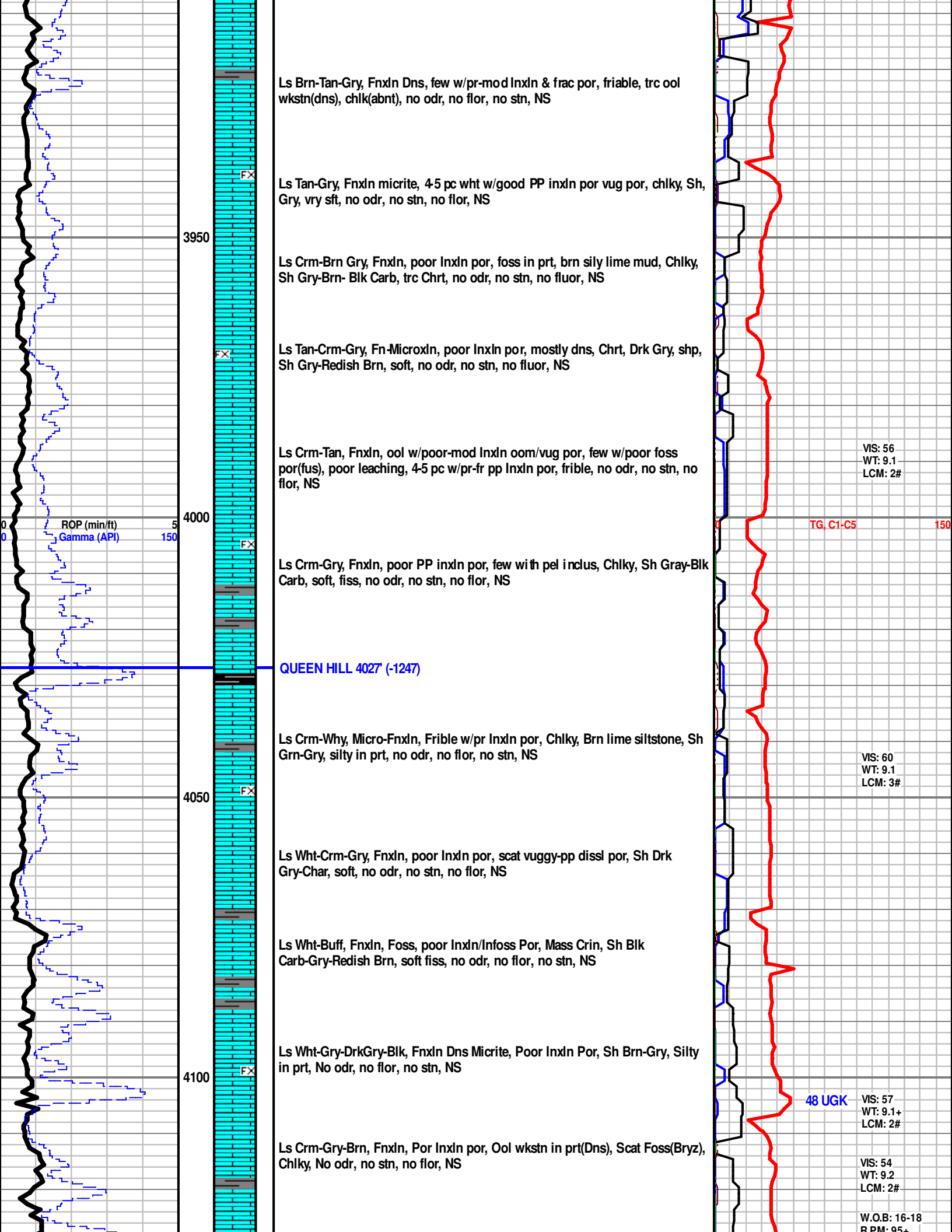
Ls Crm- Gry, micrite grad Fnxln, dns grd to soft/frible with pr-fr lnxln por and minor grn gluc inclus, Sh Gry, soft, no odr, no flor, no stn, NS

Ls Crm-Tan, Fnxln, poor lnxln por, mstly dns, chlky in prt, trc pyr inclus, Chrt, Sh Gry-Brn, silty, no odr, no stn, no flor, NS

Ls Tan-Gry, dns micrite grad fnxln, poor lnxln vug por in few, chlky, Sh Gry, silty, CaCO3 Mudstone, no odr, no flor, no stn, NS

3900

Ls Crm-Wht-Lt Gry, micrite grad fnxln, poor lnxln por, becoming more fossilif, Chlky, Shl, Gry-Brn-Red, soft, no odr, no stn, no flor, NS



Ls Brn-Tan-Gry, Fnxln Dns, few w/pr-mod Inxln & frac por, friable, trc ool wkstn(dns), chlk(abnt), no odr, no flor, no stn, NS

Ls Tan-Gry, Fnxln micrite, 4-5 pc wht w/good PP inxln por vug por, chlky, Sh, Gry, vry sft, no odr, no stn, no flor, NS

Ls Crm-Brn Gry, Fnxln, poor Inxln por, foss in prt, brn silty lime mud, Chlky, Sh Gry-Brn- Blk Carb, trc Chrt, no odr, no stn, no fluor, NS

Ls Tan-Crm-Gry, Fn-Microxln, poor Inxln por, mostly dns, Chrt, Drk Gry, shp, Sh Gry-Redish Brn, soft, no odr, no stn, no fluor, NS

Ls Crm-Tan, Fnxln, ool w/poor-mod Inxln oom/vug por, few w/poor foss por(fus), poor leaching, 4-5 pc w/pr-fr pp Inxln por, friable, no odr, no stn, no flor, NS

VIS: 56
 WT: 9.1
 LCM: 2#

TG, C1-C5

150

Ls Crm-Gry, Fnxln, poor PP inxln por, few with pel i inclus, Chlky, Sh Gray-Blk Carb, soft, fiss, no odr, no stn, no flor, NS

QUEEN HILL 4027 (-1247)

Ls Crm-Why, Micro-Fnxln, Friable w/pr Inxln por, Chlky, Brn lime siltstone, Sh Grn-Gry, silty in prt, no odr, no flor, no stn, NS

VIS: 60
 WT: 9.1
 LCM: 3#

Ls Wht-Crm-Gry, Fnxln, poor Inxln por, scat vuggy-pp dissl por, Sh Drk Gry-Char, soft, no odr, no stn, no flor, NS

Ls Wht-Buff, Fnxln, Foss, poor Inxln/Infoss Por, Mass Crin, Sh Blk Carb-Gry-Redish Brn, soft fiss, no odr, no flor, no stn, NS

Ls Wht-Gry-DrkGry-Blk, Fnxln Dns Micrite, Poor Inxln Por, Sh Brn-Gry, Silty in prt, No odr, no flor, no stn, NS

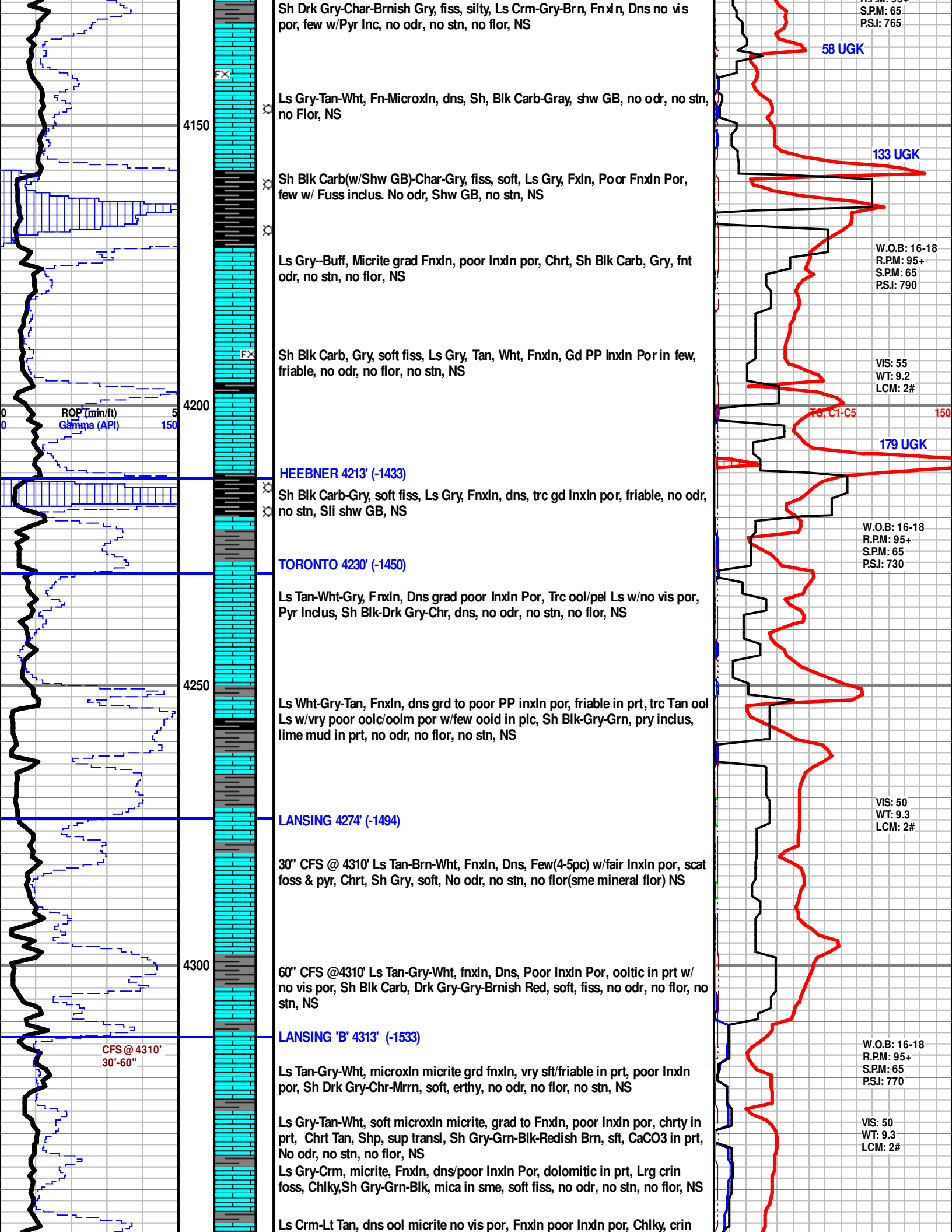
48 UGK

VIS: 57
 WT: 9.1+
 LCM: 2#

Ls Crm-Gry-Brn, Fnxln, Por Inxln por, Ool wkstn in prt(Dns), Scat Foss(Bryz), Chlky, No odr, no stn, no flor, NS

VIS: 54
 WT: 9.2
 LCM: 2#

W.O.B: 16-18
 R.P.M: 95+



Sh Drk Gry-Char-Brnish Gry, fiss, silty, Ls Crm-Gry-Brn, Fnxln, Dns no vis por, few w/Pyr Inc, no odr, no stn, no flor, NS

S.P.M: 65
P.S.I: 765

58 UGK

4150

Ls Gry-Tan-Wht, Fn-Microxln, dns, Sh, Blk Carb-Gray, shw GB, no odr, no stn, no Flor, NS

133 UGK

Sh Blk Carb(w/Shw GB)-Char-Gry, fiss, soft, Ls Gry, Fxln, Poor Fnxln Por, few w/ Fuss inclus. No odr, Shw GB, no stn, NS

Ls Gry-Buff, Micrite grad Fnxln, poor Inxln por, Chrt, Sh Blk Carb, Gry, fnt odr, no stn, no flor, NS

W.O.B: 16-18
R.P.M: 95+
S.P.M: 65
P.S.I: 790

Sh Blk Carb, Gry, soft fiss, Ls Gry, Tan, Wht, Fnxln, Gd PP Inxln Por in few, friable, no odr, no flor, no stn, NS

VIS: 55
WT: 9.2
LCM: 2#

4200

ROP (min/ft)
Gamma (API)

HEEBNER 4213' (-1433)

Sh Blk Carb-Gry, soft fiss, Ls Gry, Fnxln, dns, trc gd Inxln por, friable, no odr, no stn, Sli shw GB, NS

179 UGK

TORONTO 4230' (-1450)

Ls Tan-Wht-Gry, Fnxln, Dns grad poor Inxln Por, Trc ool/pel Ls w/no vis por, Pyr Inklus, Sh Blk-Drk Gry-Chr, dns, no odr, no stn, no flor, NS

W.O.B: 16-18
R.P.M: 95+
S.P.M: 65
P.S.I: 730

4250

Ls Wht-Gry-Tan, Fnxln, dns grd to poor PP Inxln por, friable in prt, trc Tan ool Ls w/vry poor ool/oolm por w/few ooid in plc, Sh Blk-Gry-Grn, pry inclus, lime mud in prt, no odr, no flor, no stn, NS

VIS: 50
WT: 9.3
LCM: 2#

LANSING 4274' (-1494)

30' CFS @ 4310' Ls Tan-Brn-Wht, Fnxln, Dns, Few(4-5pc) w/fair Inxln por, scat foss & pyr, Chrt, Sh Gry, soft, No odr, no stn, no flor(sme mineral flor) NS

4300

60' CFS @4310' Ls Tan-Gry-Wht, fnxln, Dns, Poor Inxln Por, oolitic in prt w/ no vis por, Sh Blk Carb, Drk Gry-Gry-Brnish Red, soft, fiss, no odr, no flor, no stn, NS

LANSING 'B' 4313' (-1533)

Ls Tan-Gry-Wht, microxln micrite grd fnxln, vry sft/friable in prt, poor Inxln por, Sh Drk Gry-Chr-Mrrn, soft, erthy, no odr, no flor, no stn, NS

W.O.B: 16-18
R.P.M: 95+
S.P.M: 65
P.S.I: 770

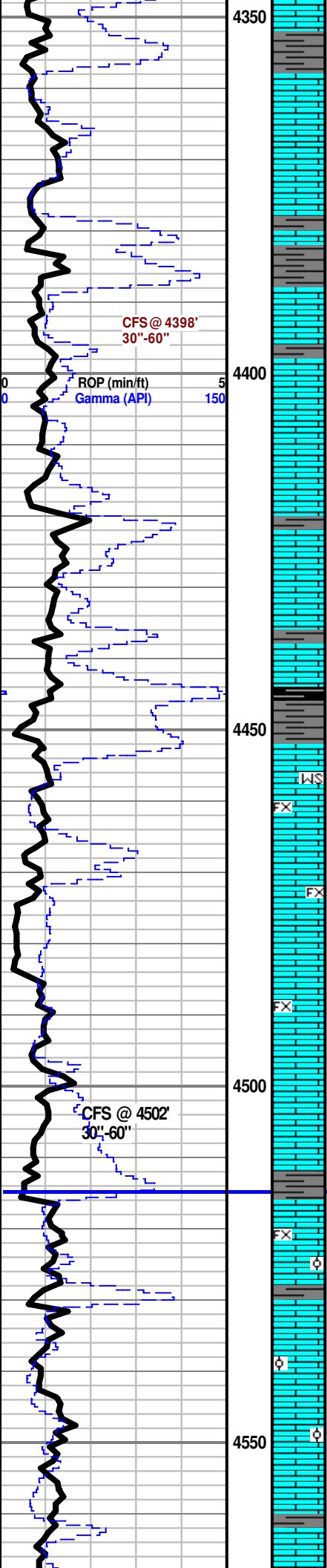
Ls Gry-Tan-Wht, soft microxln micrite, grad to Fnxln, poor Inxln por, chrty in prt, Chrt Tan, Shp, sup transl, Sh Gry-Grn-Blk-Redish Brn, sft, CaCO3 in prt, No odr, no stn, no flor, NS

VIS: 50
WT: 9.3
LCM: 2#

Ls Gry-Crm, micrite, Fnxln, dns/poor Inxln Por, dolomitic in prt, Lrg crin foss, Chlky,Sh Gry-Grn-Blk, mica in sme, soft fiss, no odr, no stn, no flor, NS

Ls Crm-Lt Tan, dns ool micrite no vis por, Fnxln poor Inxln por, Chlky, crin

CFS @ 4310'
30'-60"



30' CFS @ 4398' Sh Gry-Drk Gry, soft limy in prt, Ls Crm-Gry-Tan, micrite grd fnxln, poor Inxn por, Chlky, Chrt Tan-LtGry, sub transl, shp, no odr, no stn, no flor, NS

60' CFS @ 4398' Ls Crm-Gry, soft micrite, Fnxln, soft friable, poor Inxn por, few w/foss ooid & pel inclus, Chlky, Sh Gry-Blk, silty, mica in few, no odr, no flor, no stn, NS

Ls Crm-Gry, Fnxln, poor-mod Inxn por, trc vuggy leched por in few, foss(crin), Chlky, Sh Gry, silty, no odr, no stn, no flor, NS

Ls Tan-Gryish Brn, micrite grad Fnxln, dns, trc poor Inxn por, Chalky, Chrt Brnsh gry, Shp, no odr, no stn, no flor, NS

Ls Crm-Gry, Fnxln, Foss/ool wkstn in prt(brach, crin), poor-good PP Inxn Por, minor trc vuggy dissil por, Chlky, Sh Gry, soft, trc Chrt, Drk Gry, no odr, no stn, no flor, NS

30' CFS @ 4502' Ls Wht-Crm-Tan, Fnxln, poor-med PP Inxn por, Fnxln oolitic Ls w/pr-gd Inxn-oom & ooc por, Few w/gd dissil & leached vuggy por, w/ooids in plc(3-4 pc), Chlky, Sh Gry, sft, smooth, No odr, poss stn (ool pc), brght-dull yel flor in oom pc,

60' CFS @ 4502' Ls Crm-Tan-Gry-Why, Fnxln, poor-med PP Inxn por, Fnxln oolitic Ls w/pr-gd Inxn-oom & ooc por, Few w/gd dissil & leached vuggy por, w/ooids in plc(3-4 pc), Chlky, Sh Gry, sft, smooth, No odr, poss stn (ool pc), brght-dull yel flor in oom pc,

IOLA 4515' (-1735)

Ls Tan-Crm-Gry, Fnxln oolitic fossiliferous Ls, poor-med pp inxn por, friable, 4-5 pc w/gd intrgrn-oom vuggy por w/ooids in pl, bright yel flor, flor GB undr heat with 10% HCL, no odr, no vis stn, Sh Gry, silty, pyritic, SSSB, NSO

Ls Crm-Gry-Wht, micrite grd Fnxln oom-ool w/gd Inxn vuggy por, vry friable, lt brn-brn spty stn, Sh Gry-Grn Aqua, no odr, no fluor, spty brn stn(trc), NS

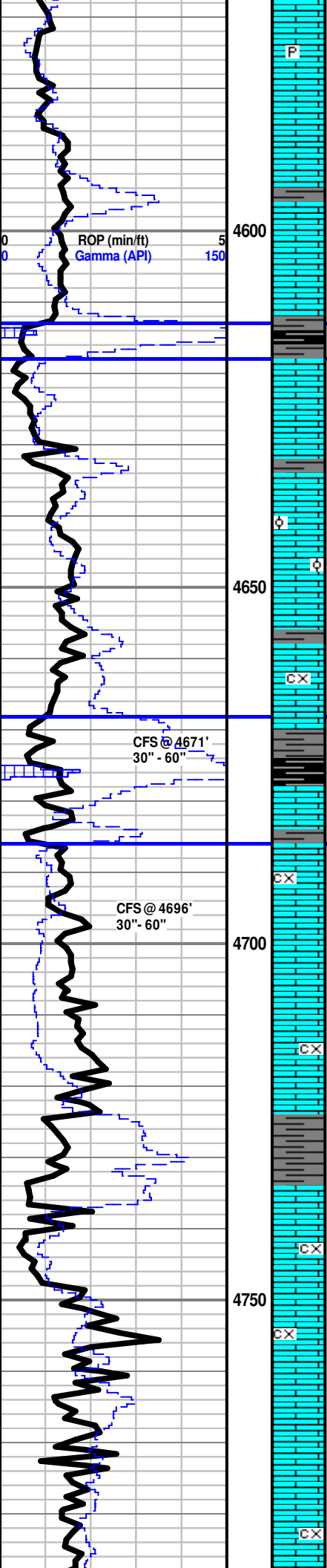
Ls Brn-Lt Gry-Wht Fnxln, oolitic in prt, pr-Gd vuggy Inxn por, friable, scat pyr inclus, Sh Drk Gry, Grn, Redish Brn, Chrt Gry-Brn, no odr, no stn, no flor, NS

Ls Crm-Tan, fn-microxn, sli oolitic, chrty, poor inxn por, Sh Gry-Drk Gry, pyritic, Chrt, Wht-Tan, shrp, no odr, no flor, no stn, NS



W.O.B: 16-18
 R.P.M: 95+
 S.P.M: 65
 P.S.I: 800

VIS: 60
 WT: 9+
 LCM: 2#



Ls Wht-Tan, fossiliferous micrite, soft, few pyr inclus, scat FxnLs w/mod Inxln vug por, Chrty, Sh Gray, vry sft no odr, no stn, no flor, NS

Ls Wht-Crm, vry chlky, Fn-microxln, scat PP & Vuggy Por, few fus foss, no odr, no flor, no stn, NS

Ls Wht-Lt Brn, Fnxln, mstly dns w/scat PP inxln por, few pyr inclus, Gry siltstone with mica, Sh Gry-Blk Carb, soft fiss, no odr, no flor, no stn, NS

Stark 4613' (-1833)

Sowpe Por 4618' (-1838)

Ls Wht-Crm-Brn, fnxln, scat gd pp inxln por, ool in prt, 2-3 pc w/ spty Bright wht fluor and brn stn, Good Inxln oom vug por, fluor GB & stedy flow cut, poss vry sli odr in cup

Ls Crm-Wht, Fnxln, poor-Gd Inxln por w/gd diss vugs, trc oom por AA, possible fnt odr in cup, spty fluor in tray, no stn, NS

30' CFS @ 4671' Ls Tan-Brn-CrmWht, Fnxln, oomoldic w/few ooid in pl, poor-med PP inxln sucro por, poor-med Inxln oom por w/poor-med vuggy diss & leached por, spty yel flor, med shw GB under heat-crushed-HCl(GB do flor), no odr, no stn, NS

60' CFS @ 4671' Mstly Sh Blk Carb-Drk Gry-Gry, soft fiss, sli trc Ls AA, no odr, no fluor, ns stn, NS

HUSHPUCKNEY 4668' (-1888)

30' CFS @ 4696' Sh Blk Carb-Gry-Grn, soft fiss, Ls Crm-Wht-Tan, Fn-microxln, chlky trc oom AA, no odr, no fluor, no stn, NS

HERTHA POROSITY 4686' (-1906)

60' CFS @ 4696' Ls Wht-Tan, microxln-fnxln, vry sft friable, trc ool Ls w/gd oom por, chlky, Sh Gry-Blk Carb, Grn, soft fiss, mica, no odr, no stn, no fluor, NS

Ls Wht-Tan, microxln-fnxln, vry sft friable, trc ool Ls w/gd oom por, chlky, Sh Gry-Blk Carb- Grn, soft no odr, no stn, no fluor, NS

Ls Drk Gry- Gry-Wht, Fnxln, Dns, Foss in prt w/gluc inclus, silty, friable(wht Ls), Chrt, Drk Gry, Sh Gry-Red-Drk Gry, soft, Gry li me siltstn, no odr, no stn, no flor, NS

Sh Blk Carb-Gry-Lt Brn-Crm, sli foss, Ls Brn Fxln oolic, fair Inxln oom/oom vuggy por, good diss & leaching, no odr, no stn, no NS

Ls Wht-Lt Gry-Gry, micrite grd Fnxln, poor Inxln por, oom in prt, poor grad to gd oom vuggy Inxln por w/ spty brn stn, few ooids in plice, Sh Gry-Lt Gry, soft, poss fnt odr in cup, spty stn in few, no flor, NS

Ls Gry-Crm-Tan, dns, Fnxln oom Ls, fair Inxln oom por w/ fn-med diss vugs, poor-med PP Inxln por w/ spty/strky brn stn and yel-wht flor(3-4 pc), Sh Gry, hrd, silty, vry fnt-no odr, spty stn & flor(3-4)

Ls Gry-Buff, Dns, Fnxln, Dolomitc, poor Fnxln por, trc crin foss, 1 pc oom w/gd oom-vug por(frm Abv), Sh Gry, hrd, no odr, 2-3 pc flor (frm abv), no stn, NS

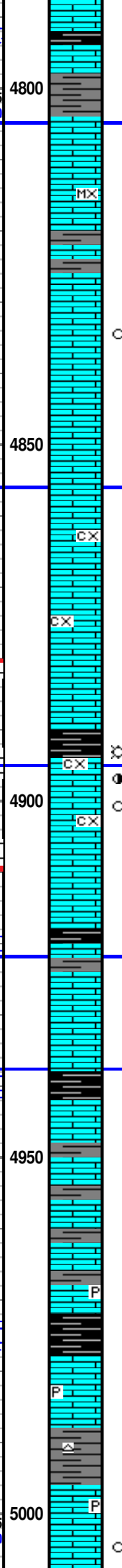
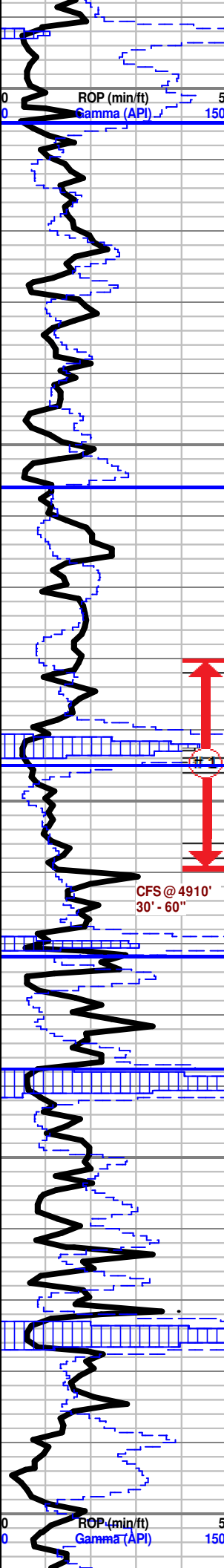
Ls Drk-Gry-Brn, fnxln, dns vry hrd, Sh Drk Gray, no odr, no flor, no stn, NS

Sh Gry-Blk Crb- Lt Grn, sft, pyr inclus, Ls Gry-Crm-Tan, fnxln, dns w/pyr Incls, trc gd-Inxln por, soft-fribal, Brn-Tan oom in prt(<2-3%), gd Inxln oom/vug por, no odr, no flor, Drk Brn-Blk Gil(dead oil) stn(2-3 pc), NS

TG, C1-C5

150

Mudco Ck @
4696' @ 9:10
AM 2/27/17
Vis56;
WT=9.2#;
PV=17; YP=
21; Cake=1;
Chl=3500;
Cal=20;
Sol=6.2%
LCM=2#;
DMC=\$
2,462.97
CMC=\$
12,346.14



Ls Wht-Gry, micro-Fnxln micrite, vry-pr lnxn por, trc pp diss vugs, few oo/pel inclus, Sh Blk Carb-Gry, sft fiss, no odr, no flor, no stn, NS

Marmaton 4805' (-2025)

Ls Wht-Tan-Drk Gry, micrln micrite, sft, Fnxln dns, poor lnxn por, sli dolo/chrt in prt, Sh Gry-Grn-Aqua-Red, soft, limy silty in prt, no odr, no flor, no stn, NS

Ls Wht-Crm-Brn, microxn micrite, grd Fnxln, pr lnxn por, trc elong oo & pyr inclus, Sh Drk Gry-Gry-Grn, silty, Chrt Drk Brn, sub transl, no odr, no flor, NS

Ls Tan-Lt Gry-Brn, Fnxln, foss ool in prt(<5%) w/gd lnxn vugy por, gd diss/leching, spty lt brn stn(4-5 pc) w/ vry fnt flor, Sh Gry-Grn, chrt, no odr, fnt dul flor, spty brn stn

Ls Tan-Gry-Crm, micrite grd fnxln, pr-lnxn por, ool in prt, trc pr vuggy lnxn por, Sh Drk Gry-Blk-Lt Gry-Grnish Gry, sft w/pyr inclus, no odr, no flor, no stn, NS

MARMATON 'C' 4856' (-2076)

Ls Crm-Tan-Brn, micrite grd fnxln, pr-Fair pp lnxn por, friable in prt, trc ool-foss Ls w/pr-fair vuggy lnxn por, poor pp diss vugs (3-4), no odr, vry spty lt brn & drk Gil stn, Sh Gry-Lt Grn, trc chrt, no odr, spty stn, no flor, NS

Ls Crm-Lt Gry-Brn, micro-fnxln micrite, dns, chlky, Sh Lt Gry-Lt Grn, silty soft, limy in prt, no odr, no stn, no flor, NS

30' CFS @ 4910' Ls Crm-Tan-Drk Gry, dns micrite grd Fnxln, oom & sli foss w/fair pp lnxn friable por and fair oom vug por, vryfn diss vugs, spty brn stn, shw GB undr heat w/10% HCl(GB do flor), vry lt colr oil spts in tray, Sh Blk Carb-Grn-Gry, fnt odr, spty lt brn stn, spty flor, sli shw GB, sli shw oil spt

PAWNEE 4895' (-2115)

60' CFS @ 4910' Ls Wht-Crm-Tan, dns micrite grd Fnxln, foss w/poor-fair pp lnxn foss por, vry friable, vuggy diss & leaching, spty-strky brn stn, sli shw GB & vry lt color oil spts undr heat when broken w/10%HCl GB do flor), Sh Blk Carb-Grn-Gry, fnt odr, spty brn stn, scat flor (5% in tray), sli shw GB, light oil spts in wtr

FT SCOTT 4922' (-2142)

Ls Wht-Lt Gry, fnxln, ool, tghty cemntd w/isolated PP diss vugs. few w/micro frac por, Chlky, Sh Blk-Gry-Mrrn-Lt Gry, pyritic, no odr, no flor, no stn, NS

CHEROKEE 4938' (-2158)

Sh Blk Carb-Drk Gry-Grn Aqua, soft pyritic, Ls Buff-Gry, fnxln micrite, rnd inclus in few, dns, no odr, no flor, no stn, NS

Dol/Ls Drk Gry-Crm, dns micrite, pyritic, foss in prt(bryz,crin), Sh Blk Carb-Drk Gry, no odr, no stn, no flor, NS

Ls/Dol, Drk Gry-Tan, Dns micro sucrosic, trc micro frac por, interbed Sh Blk-Gry, dns, no odr, no stn, no flor, NS

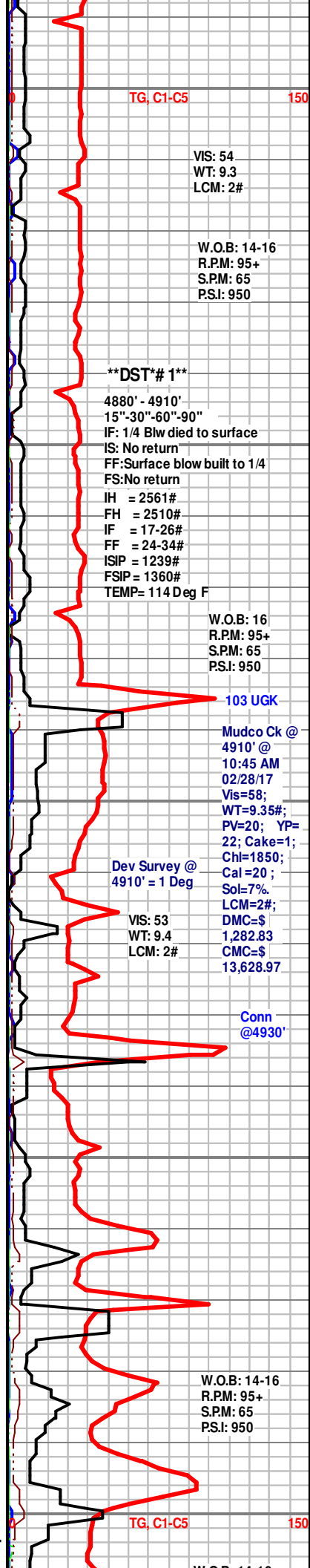
Ls Drk Gry-Buff, dns, micro sucrosic, Ls Tan-Lt Gry, foss(bryz), slabby rnd ooid grn inclus in prt, few w/ isolatd PP vug diss por, Chlky, trc pyr, oolitic chrt, Yel-Tan, Trnslu, Sh Blk Carb(w/GB)-Gry, no odr, no flor, no stn, shw GB in sh, NS

Ls Crm-Tan-Gry, sli dolo mitic ,micrite, dns/tight cemntd ool, Crsxn, slabby w/ ellip ooid and grn gluc inclus, Sh Drk Gry-Blk carb, few pyr inclus, no odr, no stn, no flor, NS

Sh Drk-Gry-Blk- Brn, hrd calcitic, mica and pyr inclus, Ls Gry-Buff-Crm, fn-microxn, dns, ool in prt with minor foss inclus, isolatd PP vug por in few, no odr, no stn, no flor, NS

Ls, Crm-Gry-Brn, Dns frosted micrite, micro sucrosic-slabby, few ool grns, sli chrt, Sh Drk Gry-Blk, no odr, no stn, no flor, NS

Ls Buff Gry-Tan-Crm, Fn-Microxn micrite, mostly dns, 1 pc Gry dolomitic Ls, micro sucrosic w/pp diss vuggy por w/ Brn Grsy Oil stn, bright bluishwht flor cut. Sh Blk-Gry, minor pyr, chrt, no odr, 1 pc w/oil stn, flor cut



TG, C1-C5

150

VIS: 54
WT: 9.3
LCM: 2#

W.O.B: 14-16
R.P.M: 95+
S.P.M: 65
P.S.I: 950

DST*# 1

4880' - 4910'
15"-30"-60"-90"
IF: 1/4 Blw died to surface
IS: No return
FF: Surface blow built to 1/4
FS: No return
IH = 2561#
FH = 2510#
IF = 17-26#
FF = 24-34#
ISIP = 1239#
FSIP = 1360#
TEMP= 114 Deg F

W.O.B: 16
R.P.M: 95+
S.P.M: 65
P.S.I: 950

103 UGK

Mudco Ck @
4910' @
10:45 AM
02/28/17
Vis=58;
WT=9.35#;
PV=20; YP=
22; Cake=1;
Chi=1850;
Cal=20 ;
Sol=7%
LCM=2#;
DMC=\$
1,282.83
CMC=\$
13,628.97

Dev Survey @
4910' = 1 Deg

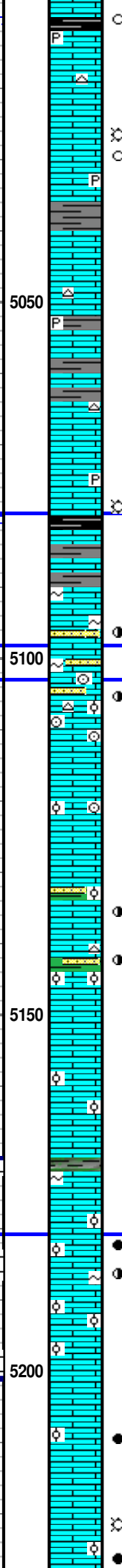
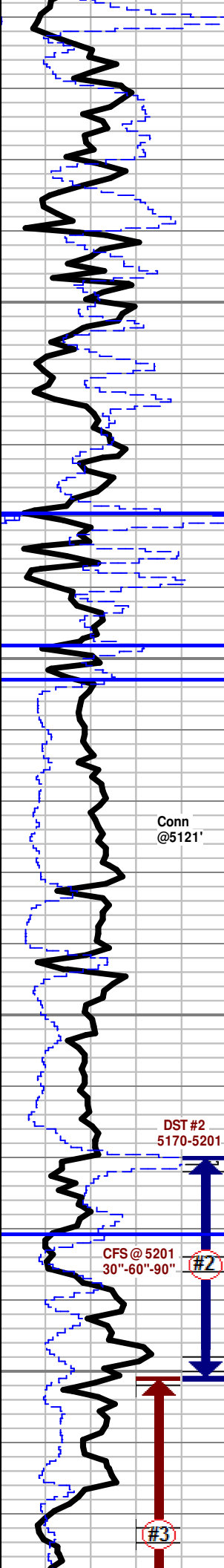
VIS: 53
WT: 9.4
LCM: 2#

Conn @4930'

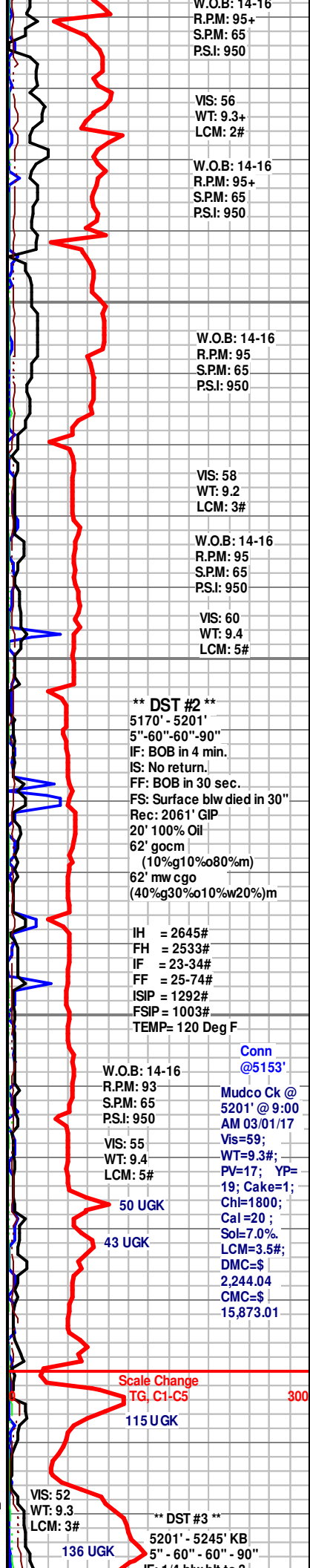
W.O.B: 14-16
R.P.M: 95+
S.P.M: 65
P.S.I: 950

TG, C1-C5

150



Ls Crm-Gry-Brn, vry fnxln, dns grd poor-fair pp inxln por, vry friable soft/crumbles to touch, 7-8 pc w/ bright flor, instant milky bright wht cut, oily sheen on wtr, Sh Gry-Blk-Red, sli pyr, fnt odr
 Ls Crm-Wht-Grn, microxln micrite, dns grd mild isolated pp inxln vug por, few w/frac por, sli foss with poor leach/diss vugs, fnt odr in cup, spty flor AA, no stn, sp
 Ls Wht-Bff-Brn, micro-vfxln, dns sli oolc, 2-3% w/ vfn PP inxln sucr por & wht flor, wht mily cut, vry lrg flor gas bbls after 10% HCL, fnt-mild odr in cup, sli foss(fenstr bryz) leached vugs, trc gluc inclus, Sh Gry-Grn-Red, scat pyr
 Sh Blk-Gry, pyritic, chrt Ls Wht-Brn-Gry, vfn-fxln, foss vuggy por(bryz-cr in), sli oolitic, no odr, no stn, no flor NS
 Ls Wht-Brn-Bruff, mixroxln micrite grd to fn-crsxln w/ slabby vug inxln por, minor sucro PP Inxln por, trc gd oom vug por, trc drk brn-blk gil stn, sli foss(bryz) & pyr inclus, Sh Blk-Brn-Gry Aqua, pyr & silty in prt, no odr, no stn, no flor, NS
ATOKA 5080' (-2300)
 Ls Buff-Wht-Brn, frosted fnxln foss micrite, fnxln foss(bryz) w/ pp diss vug por, friable w/ spty brn flor stn, bright wht flor cut w/ abnt brt yel flor GB, Sh Blk-Chr-Redish Brn, fnt odr, flor stn & GB
Morrow 5098' (-2318)
 Ls Buff-Tan, fnxln, dns grad Lt Gry-Tan Foss Crin Ool Ls w/grn gluc incus (w/poss spty brn stn), pr-md Leached PP Intrxn/Foss vug por, grd md-gd Inxln oom por w/ vrfn isolatd pp diss vugs(2-3 pc),
ST. Genevieve 5103' (-2323)
 grd Lt Gry finley arenaceous micro ool Ls w/spty brn stn, grd qtz SS w/hvy CaCO2 mtrx and gluc inclus w/strky brn stn, grd to Lt Gry-Clr Glssy, gluc qtz SS w/ spty brn stn, 1 pc w/satur brn stn, vrfn grn, well srtd, subrnd-subang, pr intrgn por(tight) grd to 1 pc w/gd ingrn por, friable, brn grsy lustr, good vry fa st bright yel wht flor cut
 Ls Wht-Tan-Brn, fnxln, fnly arenaceous micro ool, poor pp por, trc foss Ls w/gluc from above, lrg crin foss, Sh Grn Aqua-Gry-Blk, no odr, no st, no flor, NS
 Ls Wht- Grn Aqua-Gry, Finley Arenaceous Micro oolitic grading to Gry fngrn qtz SS w/ limy mtrx & sat brn stn, sub ang, gd ingrn por, friable, trc gluc, Chrt Pinkish Org-Lt Brn, shrp sup opq, Sh Blk-Gry-Aqua-Mrrn, scat spty Brn-Drk Dead oil stn, fnt odr, no flor
 Ls Wht- Grn Aqua-Gry, Finley Arenaceous Micro oolitic grading to Gry fngrn qtz SS w/ limy mtrx & sat brn stn, sub ang, gd ingrn por, friable, trc gluc, spty brn stn & blk dead oil stn, Chrt Pinkish Org-Lt Brn, shrp sup opq, Sh Blk-Gry-Aqua-Mrrn, scat spty Brn-Drk Dead oil stn, fnt odr, no flor
 Ls Wht-Lt Gry finley Arenaceous, Micro oolitic, sndy, friable, trc grn gluc, Chrt Drk Gry-Blk, foss(Brach), Sh Blk-Gry-Aqua-Brn, no odr, no flor, no stn, NS
 Ls Wht-Lt Gry finley Arenaceous, Micro-Fngrn oolitic, sndy, friable, trc grn gluc, Chrt Org-Brn, shp sup opq, Sh Blk-Gry-Aqua-Mrrn, no odr, no f br, no stn, NS
 Ls Wht-Lt Gry finley Arenaceous, Micro-Fngrn oolitic, sndy, friable, trc grn gluc, grd to fnxln w/ sli lrg ooids, trc pyr, Chrt Org-Brn, shp sup opq, Sh Blk-Gry-Aqua-Mrrn-Lt purp, no odr, no flor, no stn, NS
 Ls Wht-Lt Gry finley Arenaceous, Micro- oolitic, sndy, friable, trc grn gluc, grd to fnxln w/ sli lrg ooids, trc pyr, Chrt Org-Brn, shp sup opq, Sh Blk-Gry-Aqua-Mrrn-Lt purp, no odr, no flor, no stn, NS
 Ls Wht-Lt Gry finley Arenaceous, Micro- oolitic, Grad to Fn-med oolitic, pr-mod-gd PP Intr-oom vug por, vr friable w/ abnt leached free ooids in plc, grsy brn stn lustr, mod odr, scat Brit yel flor, free oil in tray
ST. LOUIS 'B' 5181' (-2401)
 30" CFS @ 5201' LS Crm-Gry, fnly arenaceous micro-ool w/fn-med ool inclus, grd to fn-med Grn ool wksn w/rnd-oval cemnt ooids & minor gluc, grd ool pkstn w/ poor-mod Intrprt por, trc oompor wisolatd pp diss vugs, scat free ooid grns, Trc pyr, Chrt Wht, shp, sub opq, fnt-mod odr, spty brn stn, spty yel flor, SSFO in tray
 60" CFS @ 5201' LS, Wht-Gry-Tan, micrite, micro-ool in prt, grd skel ool mudstn-wktn, w/poor-mod inxln por & pp diss vugs, grd fngrn, wll srtd ool pkstn w/gd intrgn por & isol oom por w/ mod-gd leaching, scat free ooid grns, spty-strky brn stn, scat yel flor, SSFO in tray
 LS Wht-Buff Fn-Medxln, poor inxln por, grd foss ool wksn-pkstn, sli chrt, poor-mod grading to good(in few) vuggy intrpart por, poor leaching & pp diss vugs, spty-strky brn oil stn thr out, scat yel-bright yel flor, sli show Gas in wtr undr heat, sli shw Free Oil drops floating in sample tray & sample cup, mod odr, Chrt Wht shrp, sub opq, Sh Gm-Gry-Aqua-Blk-Ma m, fiss, sli pyritic, SSG & SFO
 30" CFS @ 5245' Vry Chlky grd muddy lime micrite, wabnt free ooids grd to Ls Wht-Tan-Bruff, foss-ool micrite, grad to Fnxln foss/skel ool pkstn (gastr, bryz), mod intrpar/intrgn por in few, shw GB when heated undr whtr, strng odr, no show free oil, spty brn oil stn, spty drk brn-blk dead oil Sh Gry-Drk Gry
 60" CFS @ 5245' LS Wht-Buff-Tan, microxln foss ool micrite, mod pp Inxln grd med-crsgrn Skel OOL Grmstn, mod sorted, poorly cemented & vry fri in prt, abndt free ooids, grad to



Conn @5121'

DST #2 5170-5201

CFS @ 5201 30"-60"-90" #2

#3

**** DST #2 ****
 5170' - 5201'
 5"-60"-60"-90"
 IF: BOB in 4 min.
 IS: No return.
 FF: BOB in 30 sec.
 FS: Surface blw died in 30"
 Rec: 2061' GIP
 20' 100% Oil
 62' gocm
 (10%g10%o80%am)
 62' mw cgo
 (40%g30%o10%w20%)m
 IH = 2645#
 FH = 2533#
 IF = 23-34#
 FF = 25-74#
 ISIP = 1292#
 FSIP = 1003#
 TEMP= 120 Deg F

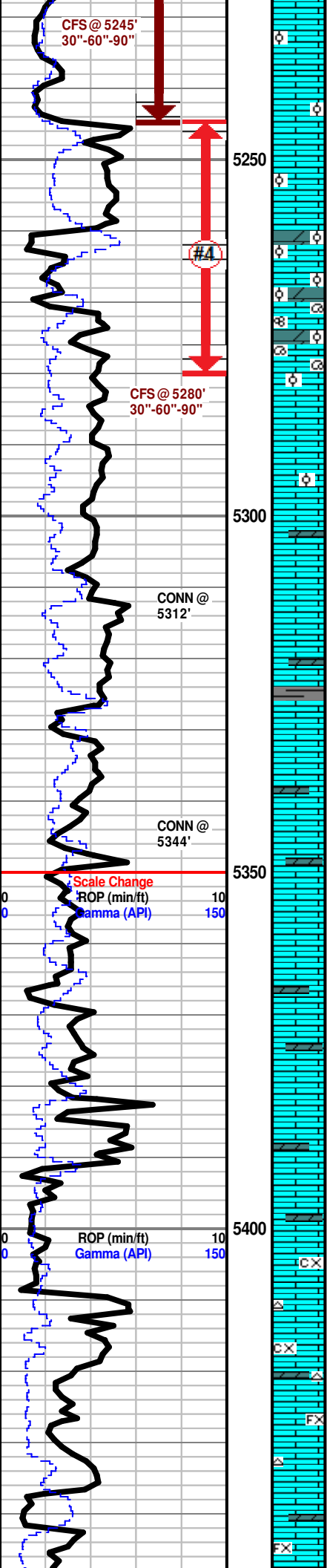
W.O.B: 14-16
 R.P.M: 93
 S.P.M: 65
 P.S.I: 950

VIS: 55
 WT: 9.4
 LCM: 5#
 50 UGK
 43 UGK

Scale Change
 TG, C1-C5
 115 UGK

W.O.B: 14-16
 R.P.M: 95
 S.P.M: 65
 P.S.I: 950
 VIS: 58
 WT: 9.2
 LCM: 3#
 W.O.B: 14-16
 R.P.M: 95
 S.P.M: 65
 P.S.I: 950
 VIS: 60
 WT: 9.4
 LCM: 5#
**** DST #3 ****
 5201' - 5245' KB
 5" - 60" - 60" - 90"
 136 UGK

Conn @5153'
 Mudco Ck @ 5201' @ 9:00 AM 03/01/17
 Vis=59;
 WT=9.3#;
 PV=17; YP=19; Cake=1;
 Chi=1800;
 Cal=20;
 Sol=7.0%
 LCM=3.5#;
 DMC=\$
 2,244.04
 CMC=\$
 15,873.01



poor-mod to Intrp (brach, crin, bryz) & frosted pp brn oil stn vugs, several free oil spts thr out sample, show GB when heated undr wtr, st rgn odr, Chlky (abdnt), Sh Grn-Gry-Blk, Chrt Orng-Wht, SSG & SFO

90" CFS @ 5245" Ls Wht-Bruff-Tan, micrite grd Fnxln foss ool wkstn, poor-mod pp lnxln/foss vug por w/frosted pp brn oil stn, grd med-crsgn Skel OOL Grnstrn AA(trc), lrg foss (brach, crin), several free oil spts thr out sample, show GB when heated undr wtr, mod odr, Chlky (less abdnt), Sh Grn-Gry-Blk, Chrt Bright Orng, SSG & SSFO

30" CFS @ 5280' Ls Wht-Crm, foss ool micrite(brach,Crin, bryz), dns grd mod foss/pitted por, vy fri w/spty/strky brn stn and drk brn dead oil stn, arenc in prt, grd Calcitic Dol Gry, fnxln, ooc/foss w/grm gluc inclus, gd suc-Intrprt vug por, lt brn spty stn, w/SG undr heat & 10%HCl(GB do fluor Brght yel), mod odr grd to strng undr heat lamp, sli SG, NSFO

60" CFS @ 5280' Ls Wht-Tan, rexized foss ool micrite w/scat pr-gd pp isol vugs, sndy-ool in prt w/gluc inclus, grd limy Dol Gry, fnxln w/gd lnxln suc por & med-pp leached vugs, spty lt brn stn, fluor GB undr heat w/10%HCl, thick streaming wht-clr cut w/beaded clr oil on top, scat spty Brght yel fluor in tray, mod odr, sli-mod SGB, SSO

90" CFS @ 5280' Ls Wht-Crm-Tan, Fn-microxln foss/ool wkstn-pkstn,dns, fngm mod strtd in prt, pr-gd dissl & leachd vug/oom por, abdnt free ooids, Dol-Gry, fnxln,gluc, w/mod-gd suc por,sc at whole foraminifera(Endo th yra), spty brght yel fluor, abdnt brn stn and drk brn dead oil stn, mod odr, 2-3 spts free floating oil

Ls Tan-Crm, Dns Fnxln, sli oolitic, flattend rexized, pitted uneven slabby texture, no vis por, vy sli trc gluc inclus, strks of flky dead oil stn(3-4 pc) Chrt Wht-Sub Vit, shp, Minor trc Sh Gry-Grn-Mroon, soft, smth-earthly, no odr, no fluor, no stn, NS

Ls Tan-Crm, Dns Fn-Microxln micrite, flattened, trc vy pr-PP por & micro frac por, sli trc of flky brn dead oil stn, no odr, no fluor, no stn, NS

Ls Tan-Crm, Fn-Microxln micrite, mstly dns w/minor pr-PP & pr-lnxln por, increased amt of scat flky Brn-Drk Brn dead oil stn, Chrt Wht-Orng Vit, Shp, Sli trc Dol Gry, fnxln, fair suc lnxln por w/minor dissl vugs, no odr, no stn, no fluor, NS

Ls Tan-Lt Gry, micrite grd fn-mdxln, dns sli foss un-even grny texture, Dol Lt Gry-Bruff, vy fnxln, pr-fr sucro lnxln por, trc Chrt Lt Gry-Gry, Vit-sub opq, Shp, frsh, qtzite in prt, no odr, no fluor, no stn, NS

Ls Tan-Bruff, micrite grd Fn-mdxln, sli foss w/trc gluc, no vis por, Dol Gry-Bruff fn-vyfnxln, suc w/minor isolated vugs, Chrt Wht-Lt Gry, sup opq, Shp, no odr, no fluor, no stn, NS

Ls Tan-Bruff, fn-mdxln, dns grd to Dolomitic Ls, Lt Gry, vy fnxln, sub suc, grd to Dol, Gry-Bruff, pr PP lnxln suc por, Chrt Drk Gry-Tan, Vit Shp, opq, no odr, no fluor, no stn, NS

Ls Bruff-Tan, Fn-Coxln, dns sli foss, dolomitic in prt, Chrt Wht-Lt Gry, Shp, opq, Dol Gry, fnxln, suc, pr PP lnxln por, Sh Gry-Grn w/pyr inclus no odr, no fluor, no stn, NS

Ls Tan-Bruff, dns, fnxln, w/minor ool & silty inclus, Chrt Lt Gry, shp opq, Dol Lt Gry-Brn, suc w/scat dissl vugs, Sh Blk-Grn-Red, sli pyritic, no odr, no fluor, no stn, NS

Ls Bruff-Tan, dolo in prt, dns micrite, fn-md xln w/ intrbed Lt Gry-Wht-Tan, foss opq-trnslu chrt, trc Sh Blk-Grn-Gry-Brn, few pyr inclus, chrt, trc anhy, no odr, no stn, no fluor, NS

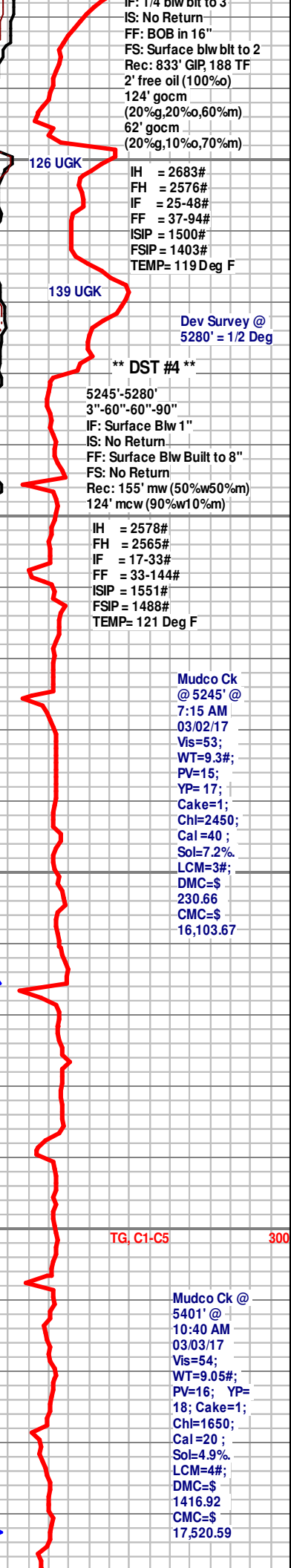
30" CFS @ 5408' Ls, micrite-vy clk, foss ool mdstn, scat ool/ooc pkstn-grnstrn, grading to mostly chlkw w/prly strtd ool grns, foss fragments & qtz grn inclus, Chrt Lt Gry-Tan, Shp opq-sub opq, scat Gry-Blk-Red Sh, no odr, no fluor, no stn, NS

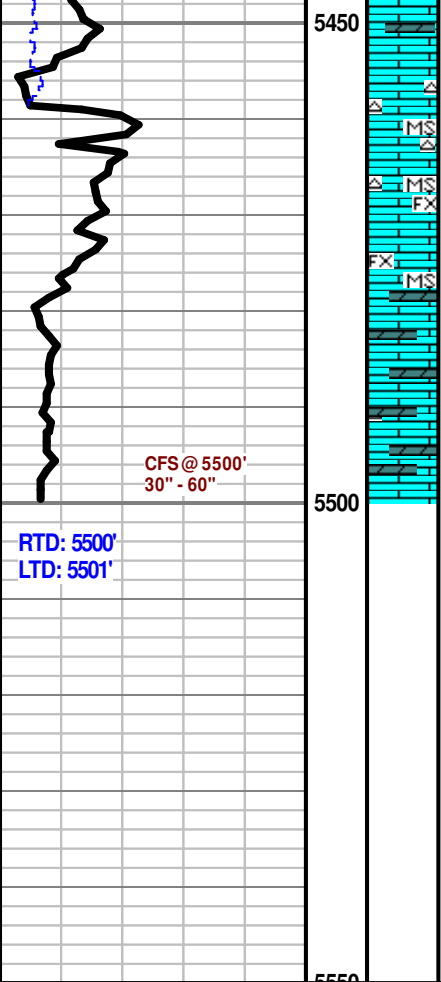
Ls Crm-Gry-Brn, dns fn-coxln, grad to flattend ool/ooc pkstn w/qtz grn inclus, grd prly cement ool grnstrn, Ls/Dol Lt Gry-Brn, silty suc, limey in prt w/ wll devp pp lnxln vugy por, scat brn stn, mod-strong odr in cup incr undr heat, spty flky blk dead o stn, spty grn fluor, 3-4 drops of FO in tray

Ls Crm-Wht-Gry, dns fn-microxln, grd mottled-chlky texture, sli foss w/ fngm ool/qtz & intrclst inclus, minor Sh Gry-Red, trc Chrt, sli-mod odr in cup, scat drk flky dead o stn, no fluor, NS

Ls Crm-Wht-Lt Gry, dns grd fn-microxln, few grn inclus w/ chlky texture, fngm ool/qtz & intrclst inclus, minor Sh Gry-Red, trc Chrt, sli odr in cup, scat drk flky dead o stn, no fluor, NS

Ls Crm-Gry-Tan-Brn, dol in prt, fnxln w/pr spty lnxln por, sli Mottled,w/vyfn-fn grn inclus(qtz, rnd intrclst) Crm rexized Fnxln foss prly strtd ool pkstn/wkstn, Cht Lt Gry-Wht, sub opq, shp, Chlky, vy sli trc gluc, Sh Red-Brn no odr, no fluor, no stn, NS





Ls Gry-Crm-Tan, microIn micrite grad Fnxln, sli dolo in prt, detrital inclus(oo,pell,qtz), flky brn-blk dead oil stn(scst) vy sli trc Sh Drk Gry, Chrt Wht-Clr, shp sub fn-microIn, Chrt Lt Gry-Wht-Tan, foss, sub opq to sub transl, no odr, no stn, no fluor, NS

Ls Tan-Crm-Buff, Fn-Coxln, dns, Dolomitic Ls in prt, Gry Buff-Brn, Fnxln, silty, scat pr-mod pp inxln suc por, Sh Gry, silty mdstn, no odr, no fluor, no stn, NS

Chrt foss (less abndt), Ls Wht-Crm vr mddy Chlk, grad to Limey Dol, Lt Gry-Lt Brn, vr fnxln, sub suc, pr PP to no vis por, abnt gastr & foram foss, no odr, no flor, no stn, NS

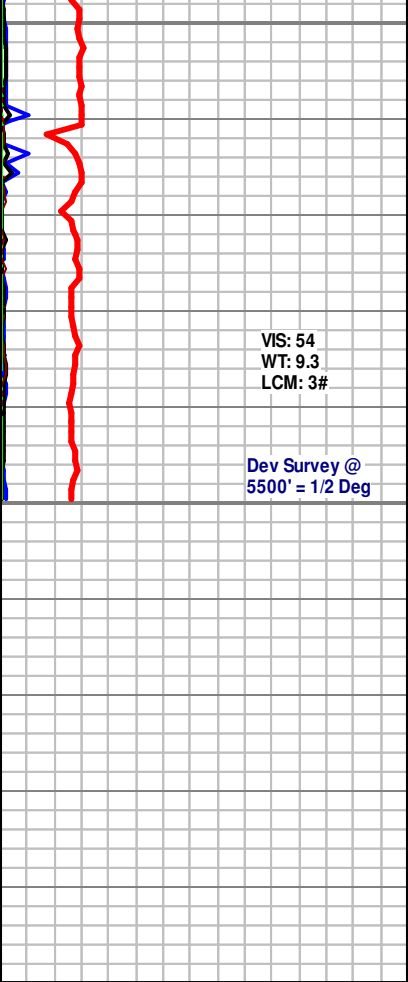
30' CFS @ 5500' Ls, Wht-Gry, chlky micrite grd Fnxln vr foss w/grn inclus, sli trc well srted prly cmentd chlky ool pkstn-wkstn scat vugy por, Dol Gry-Lt Brn, foss in prt, minor pp suc por, Chrt Wht-Lt Gry, sup opq, shp, Sh Blk-Drk Gry, chrty in prt, no odr, no stn, no fluor, NS

60' CFS @ 5500' Ls Tan-Crm, mstly dns & vry chlky, Fnxln i n prt w/trc of pr Inxln por, Dol Lt Tan- Lt Gryish Brn, vr fnxln, sli suc w/scat pp por & grn gluc inclus, Chrt Wht-Lt Gry, shp, sup opq, foss, no odr, no fluor, no stn, NS

TD @ 5500' @ 4:21 PM 03-03-2017

Electric Logs Run By Weatherford Logging: Dual Induction, Compensated Density-Neutron & Microresistivity, Sonic, & Image Logs.

Geologist left location @ 11:42 AM on 03-04-2017



VIS: 54
WT: 9.3
LCM: 3#

Dev Survey @
5500' = 1/2 Deg

CFS @ 5500'
30" - 60"

RTD: 5500'
LTD: 5501'