

# Sean Deenihan

## Petroleum Geologist

### GEOLOGIST'S REPORT

#### DRILLING TIME AND SAMPLE LOG

COMPANY **Red Oak Energy, Inc.**

LEASE **PWAB #1-35**

FIELD **Wildcat**

LOCATION **2480' ENL & 2442' FWL**

SEC **35** TWPSP **14S** RGE **41W**

COUNTY **Wallace** STATE **Kansas**

CONTRACTOR **Murfin Drilling Rig #22**

SPUD **12/5/16** COMP **12/15/16**

RTD **5235'** LTD **5239'**

MUD UP **TYPE MUD** Chemical

SAMPLES SAVED FROM **3900'** TO **RTD**

SAMPLES KEPT FROM **3900'** TO **RTD**

SAMPLES EXAMINED FROM **3900'** TO **RTD**

GEOLOGICAL SUPERVISION FROM **4000'**

REFERENCE WELL **Prairiewind #2**

#### ELEVATIONS

KB **3786'**

DF \_\_\_\_\_

GL **3775'**

Measurements Are All From Kelly Bushings

CASING

CONDUCTOR \_\_\_\_\_

SURFACE **8-5/8"** at **506'**

PRODUCTION **5-1/2"** at **LTD'**

ELECTRICAL

EL Wellline

CND/DIL

Sample Tops

PW #1	PW #2	2877' +909'	2877' +909'	4007' -416'
Heebner	-390	-400	4200	-414
Cherokee	-969	-987	4777	-991
MWV S1	-1181	-1206	4994	-1208
MWV S5	-1201	-1224	5013	-1227
MWV LS	-1315	-1319	5098	-1312
MISS	-1368	-1368	5154	-1368

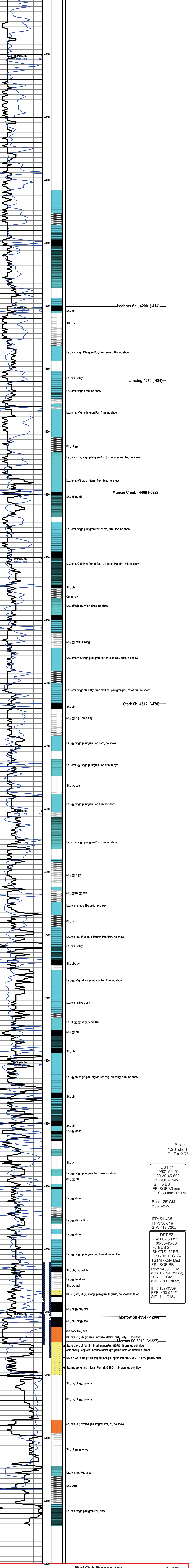


REMARKS Based on positive DST results, the PWAB will#1-35 will be further evaluated through 5.5" production casing.

Respectfully Submitted,

Sean P. Deenihan

15-199-20438



Strap 1.28' short SHT = 2.7"

DST #1  
4960' - 5025'  
30-30-45-60"  
IF: BOB 4 min  
ISI: no BB  
FF: BOB 30 sec.  
GTS 30 min. TSTM  
Rec: 125' GM  
(10G, 90%M),  
IFP: 51-48#  
FFP: 50-71#  
SIP: 712-720#

DST #2  
4960' - 5035'  
30-30-45-60"  
IF: BOB 2  
ISI: GTS- 3" BB  
FF: BOB 1" GTS-  
TSTM - Oily Mist  
FSI: BOB BB  
Rec: 1400' GCMO  
(10%G, 70%O, 20%M),  
124' GCOM  
(10G, 20%O, 70%M)  
IFP: 137-353#  
FFP: 353-549#  
SIP: 711-718#