



**TRILOBITE
TESTING, INC.**

DRILL STEM TEST REPORT

Culbreath Oil & Gas

4-12-32 Logan, Ks

3501 S Yale Ave.
Tulsa, Ok 74135

Voth 2-4

ATTN: Larry Nicholson

Job Ticket: 63798

DST#: 1

Test Start: 2017.05.03 @ 08:33:17

GENERAL INFORMATION:

Formation: **H**
 Deviated: No Whipstock: ft (KB)
 Time Tool Opened: 11:49:47
 Time Test Ended: 16:21:47
 Interval: **4206.00 ft (KB) To 4255.00 ft (KB) (TVD)**
 Total Depth: 4255.00 ft (KB) (TVD)
 Hole Diameter: 7.88 inches Hole Condition: Good
 Test Type: Conventional Bottom Hole (Initial)
 Tester: Brandon Turley
 Unit No: 79
 Reference Elevations: 3060.00 ft (KB)
 3050.00 ft (CF)
 KB to GR/CF: 10.00 ft

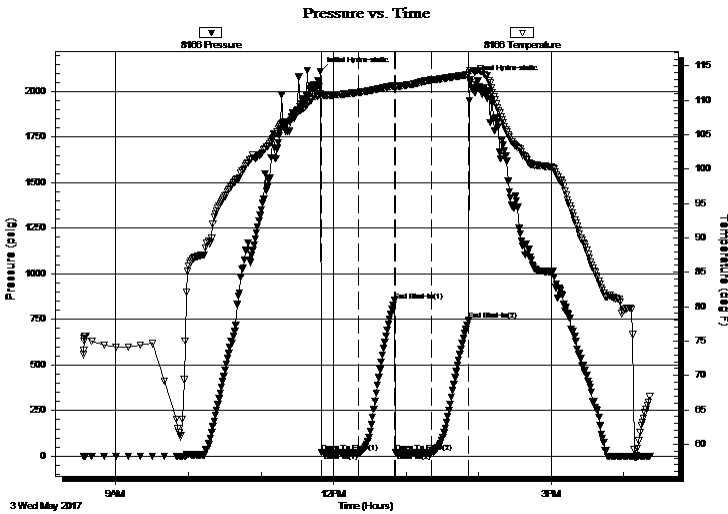
Serial #: 8166

Outside

Press@RunDepth: 18.87 psig @ 4207.00 ft (KB) Capacity: 8000.00 psig
 Start Date: 2017.05.03 End Date: 2017.05.03 Last Calib.: 2017.05.03
 Start Time: 08:33:22 End Time: 16:21:46 Time On Btm: 2017.05.03 @ 11:49:17
 Time Off Btm: 2017.05.03 @ 13:52:47

TEST COMMENT: IF: Weak Surface blow died in 4 min.
 IS: No return.
 FF: No blow.
 FS: No return.

PRESSURE SUMMARY



Time (Min.)	Pressure (psig)	Temp (deg F)	Annotation
0	2108.84	110.98	Initial Hydro-static
1	20.55	110.49	Open To Flow (1)
31	18.29	111.14	Shut-In(1)
61	853.78	112.11	End Shut-In(1)
62	19.23	111.93	Open To Flow (2)
92	18.87	112.95	Shut-In(2)
122	744.08	113.70	End Shut-In(2)
124	2065.00	114.29	Final Hydro-static

Recovery

Length (ft)	Description	Volume (bbl)
5.00	mud 100%m	0.07

Gas Rates

Choke (inches)	Pressure (psig)	Gas Rate (Mcf/d)



TRILOBITE TESTING, INC.

DRILL STEM TEST REPORT

Culbreath Oil & Gas

4-12-32 Logan, Ks

3501 S Yale Ave.
Tulsa, Ok 74135

Voth 2-4

ATTN: Larry Nicholson

Job Ticket: 63798

DST#: 1

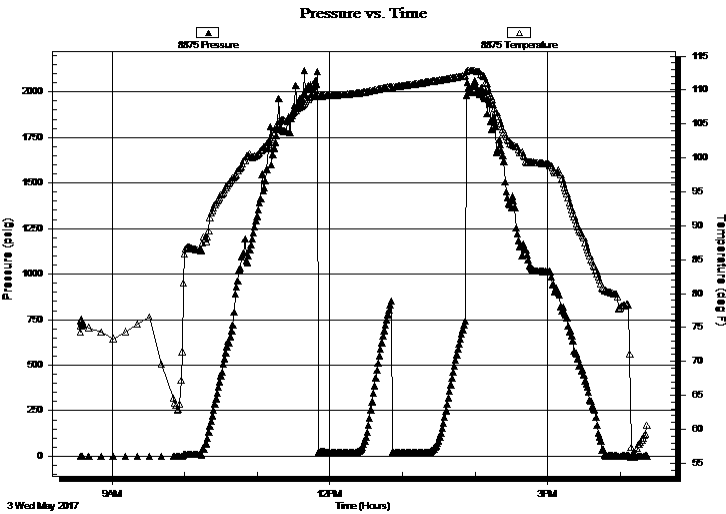
Test Start: 2017.05.03 @ 08:33:17

GENERAL INFORMATION:

Formation: H			
Deviated: No Whipstock:		ft (KB)	Test Type: Conventional Bottom Hole (Initial)
Time Tool Opened: 11:49:47			Tester: Brandon Turley
Time Test Ended: 16:21:47			Unit No: 79
Interval: 4206.00 ft (KB) To 4255.00 ft (KB) (TVD)			Reference Elevations: 3060.00 ft (KB)
Total Depth: 4255.00 ft (KB) (TVD)			3050.00 ft (CF)
Hole Diameter: 7.88 inches	Hole Condition: Good		KB to GR/CF: 10.00 ft

Serial #: 8875	Inside				
Press@RunDepth:	psig @	4207.00 ft (KB)	Capacity:	8000.00 psig	
Start Date:	2017.05.03	End Date:	2017.05.03	Last Calib.:	2017.05.03
Start Time:	08:34:00	End Time:	16:22:24	Time On Btm:	
				Time Off Btm:	

TEST COMMENT: IF: Weak Surface blow died in 4 min.
IS: No return.
FF: No blow.
FS: No return.



PRESSURE SUMMARY

Time (Min.)	Pressure (psig)	Temp (deg F)	Annotation

Recovery

Length (ft)	Description	Volume (bbl)
5.00	mud 100%m	0.07

Gas Rates

Choke (inches)	Pressure (psig)	Gas Rate (Mcf/d)



**TRILOBITE
TESTING, INC.**

DRILL STEM TEST REPORT

FLUID SUMMARY

Culbreath Oil & Gas

4-12-32 Logan, Ks

3501 S Yale Ave.
Tulsa, Ok 74135

Voth 2-4

Job Ticket: 63798

DST#: 1

ATTN: Larry Nicholson

Test Start: 2017.05.03 @ 08:33:17

Mud and Cushion Information

Mud Type: Gel Chem

Cushion Type:

Oil API:

0 deg API

Mud Weight: 9.00 lb/gal

Cushion Length:

ft

Water Salinity:

0 ppm

Viscosity: 67.00 sec/qt

Cushion Volume:

bbl

Water Loss: 7.99 in³

Gas Cushion Type:

Resistivity: 0.00 ohm.m

Gas Cushion Pressure:

psig

Salinity: 8000.00 ppm

Filter Cake: 1.00 inches

Recovery Information

Recovery Table

Length ft	Description	Volume bbl
5.00	mud 100%m	0.070

Total Length: 5.00 ft Total Volume: 0.070 bbl

Num Fluid Samples: 0

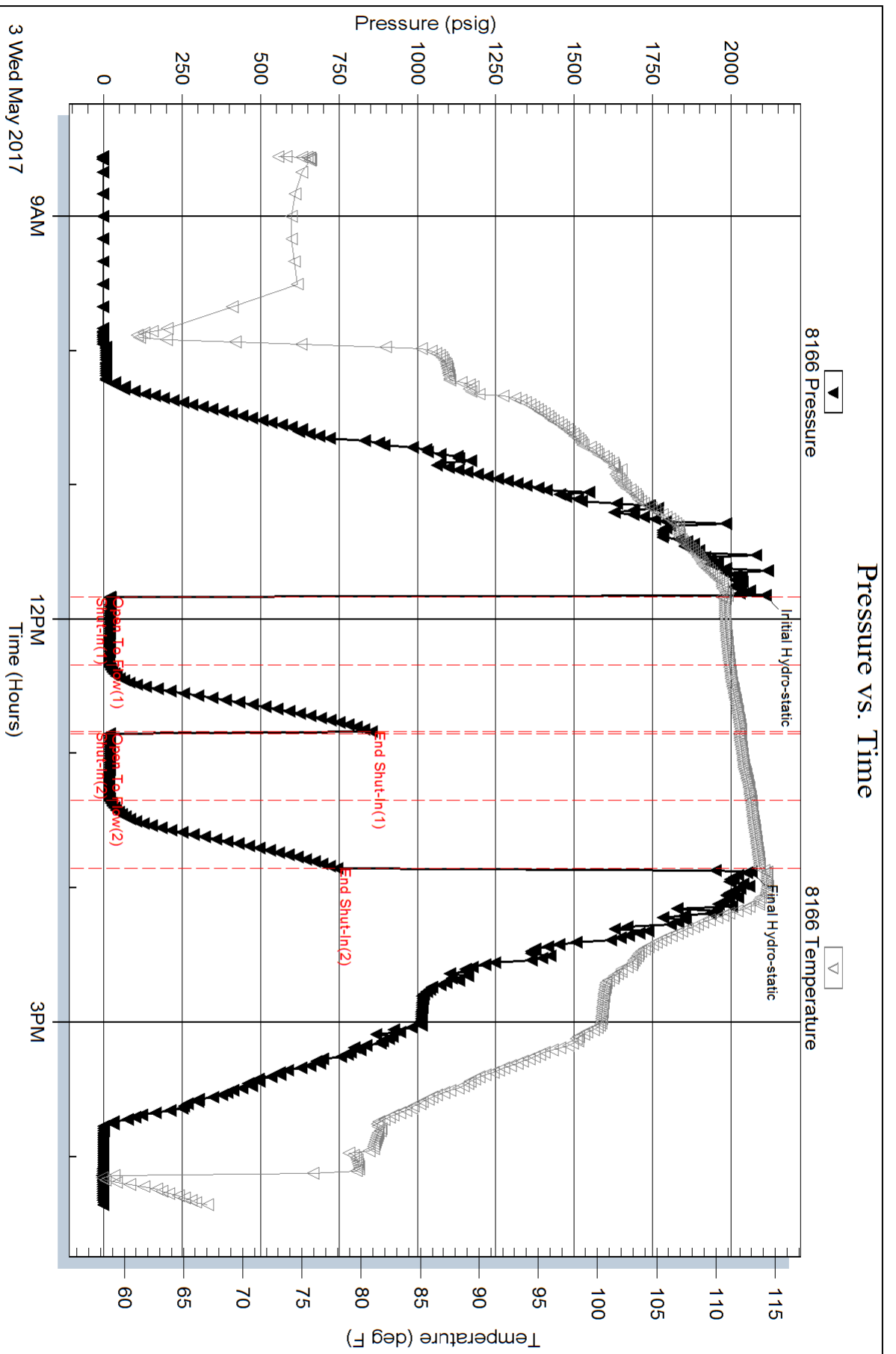
Num Gas Bombs: 0

Serial #:

Laboratory Name:

Laboratory Location:

Recovery Comments:



Serial #: 8875

Inside

Culbreath Oil & Gas

Voith 2-4

DST Test Number: 1

