

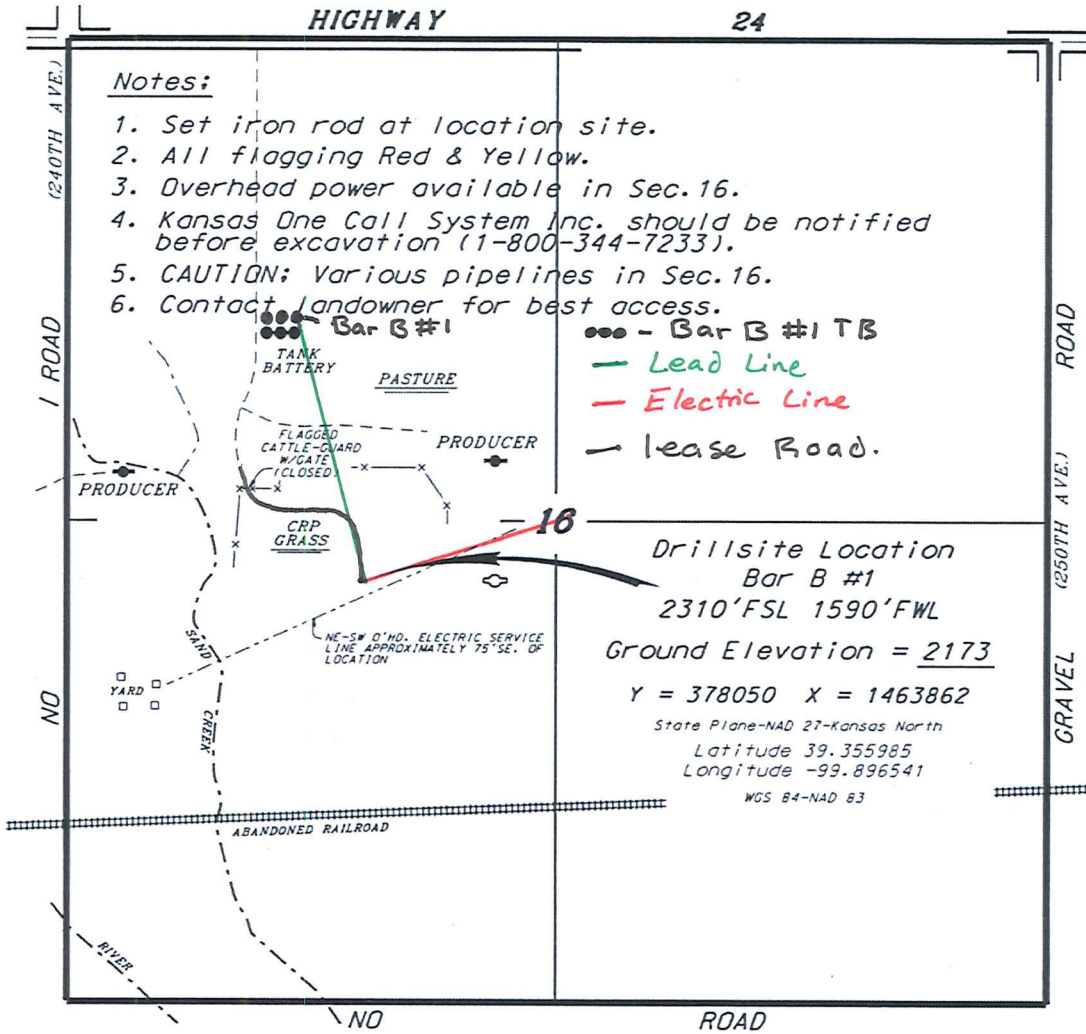
BEREXCO, LLC
BAR LEASE
 SW. 1/4, SECTION 16, T8S, R23W
 GRAHAM COUNTY, KANSAS

HIGHWAY 24

Notes:

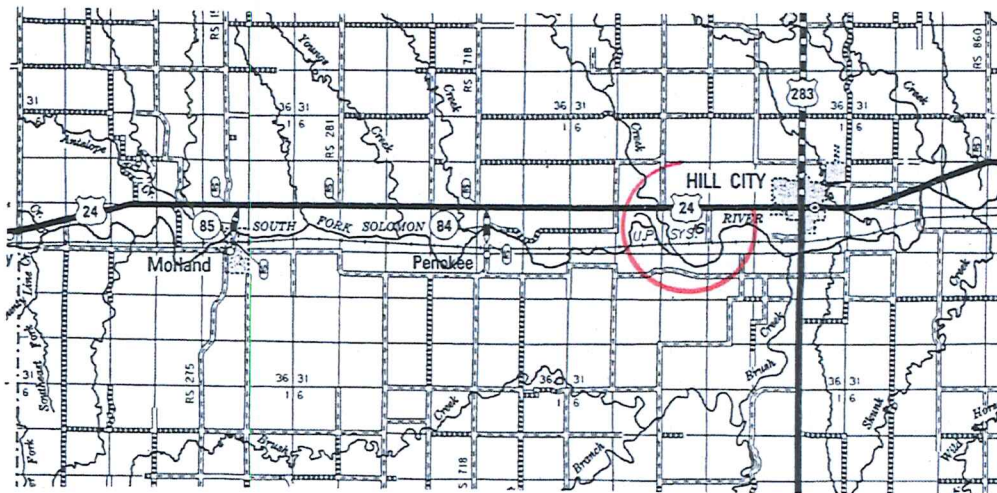
1. Set iron rod at location site.
2. All flagging Red & Yellow.
3. Overhead power available in Sec. 16.
4. Kansas One Call System Inc. should be notified before excavation (1-800-344-7233).
5. CAUTION: Various pipelines in Sec. 16.
6. Contact landowner for best access.

●●● - Bar B #1 TB
 — Lead Line
 — Electric Line
 — Lease Road.



Drillsite Location
Bar B #1
 2310'FSL 1590'FWL
 Ground Elevation = 2173
 Y = 378050 X = 1463862
 State Plane-NAD 27-Kansas North
 Latitude 39.355985
 Longitude -99.896541
 WGS 84-NAD 83

* Ingress and egress to location as shown on this plat is for usage only and may not be legally opened for public use. Contact landowner, tenant and county road department for access.



• Controlling data is based upon the best maps and photographs available to us and upon a regular section of land containing 640 acres.
 • Approximate section lines were determined using the normal standard of care of oilfield surveyors practicing in the state of Kansas. The section corners, which establish the precise section lines, were not necessarily located, and the exact location of the drillsite location in the section is not guaranteed. Therefore, the operator securing this service and accepting this plat and all other parties relying thereon agree to hold Central Kansas Oilfield Services, Inc., its officers and employees harmless from all losses, costs and expenses and said entities released from any liability from incidental or consequential damages.
 • Elevations derived from National Geodetic Vertical Datum.

Date May 17, 2017

CENTRAL KANSAS OILFIELD SERVICES, INC. (620)792-1977