

GLOBAL OIL FIELD SERVICES, LLC

# Invoice

24 S. Lincoln  
RUSSELL, KS 67665

RECEIVED

APR 26 2017

Date	Invoice #
4/23/2017	2907

Bill To
PALOMINO PETROLEUM INC 4924 SE 84TH ST NEWTON,KS 67114

P.O. No.	Terms	Project
LAWERENCE JA...	Due on receipt	

Quantity	Description	Rate	Amount
153	COMMON	16.00	2,448.00
102	POZ	9.50	969.00
9	GEL	21.50	193.50
63.75	FLO-SEAL	2.00	127.50
264	HANDLING	1.90	501.60
	BULK MILEAGE	396.00	396.00
1	TRI-PLEX PUMP CHARGE FOR PLUG	750.00	750.00
15	PUMP TRUCK MILEAGE	7.00	105.00
15	PICKUP FOR TRANSPORTATION OF GOODS TO JOB SITE	3.00	45.00
1	DRY HOLE PLUG	62.50	62.50
	DEDUCT 20% FROM TOTAL IF PAID WITHIN 15 DAYS OF INVOICE BARTON CO	7.50%	0.00

Thank you for your business.	<b>Total</b>	\$5,598.10
------------------------------	--------------	------------

# GLOBAL OIL FIELD SERVICES, LLC

2907

REMIT TO 24 S. Lincoln  
Russell, KS 67665

SERVICE POINT: Russell, KS

DATE <u>4-18-17</u>	SEC. <u>32</u>	TWP. <u>16</u>	RANGE <u>12</u>	CALLED OUT	ON LOCATION	JOB START	JOB FINISH
LEASE <u>Lawrence Jacobs</u>	WELL #. <u>1</u>	LOCATION			COUNTY <u>Butler</u>	STATE <u>KS</u>	
OLD OR NEW (CIRCLE ONE)							

CONTRACTOR WJW #14

TYPE OF JOB Rotary Plug

HOLE SIZE 7 7/8 T.D.

CASING SIZE DEPTH

TUBING SIZE DEPTH

DRILL PIPE DEPTH

TOOL DEPTH

PRES. MAX MINIMUM

MEAS. LINE SHOE JOINT

CEMENT LEFT IN CSG.

PERFS

DISPLACEMENT

OWNER

CEMENT AMOUNT ORDERED 25 60/40 4% gel

1/4 # Flt

COMMON @

POZMIX @

GEL @

CHLORIDE @

ASC @

HANDLING @

MILEAGE @

TOTAL

EQUIPMENT

PUMP TRUCK CEMENTER Heath

# 409 HELPER Cody

BULK TRUCK DRIVER Glenn

# 473 DRIVER

# DRIVER

REMARKS:

1st Plug @ 50' = 5051

2nd Plug @ 45' = 5051

3rd Plug @ 45' = 1051

4th Plug @ 40' = 1051

1st - 30 MH - 15

CHARGE TO: Admiral Petro

STREET

CITY STATE ZIP

Global Oil Field Services, LLC

You are hereby requested to rent cementing equipment and furnish cementer and helper(s) to assist owner or contractor to do work as is listed. The above work was done to satisfaction and supervision of owner agent or contractor. I have read and understand the "GENERAL TERMS AND CONDITIONS" listed on the reverse side.

PRINTED NAME

SIGNATURE John Doe

SERVICE

DEPTH OF JOB

PUMP TRUCK CHARGE

EXTRA FOOTAGE @

MILEAGE @

MANIFOLD @

TOTAL

PLUG & FLOAT EQUIPMENT

Dry hole Plug

TOTAL

SALES TAX (If Any)

TOTAL CHARGES

DISCOUNT IF PAID IN 30 DAYS



**QUALITY OILWELL CEMENTING, INC.**  
 PO Box 32 - 740 WEST WICHITA AVE, RUSSELL KS 67665  
 PHONE:785-324-1041 FAX:785-483-1087  
 EMAIL: cementing@ruraltel.net

RECEIVED

APR 15 2017

Date: 4/13/2017  
 Invoice # 1691  
 P.O.#:  
 Due Date: 5/13/2017  
 Division: Russell

# Invoice

**Contact:**  
 Palomino Petroleum Inc  
**Address/Job Location:**

4924 SE 84th  
 Newton Ks 67114

**Reference:**  
 LAWRENCE JACOBS 1 SEC 32-16-12

**Description of Work:**  
 SURFACE JOB

Services / Items Included:	Quantity	Price	Taxable	Item	Quantity	Price	Taxable
Labor		\$ 601.97	No				
Common-Class A	145	\$ 1,624.00	Yes				
Calcium Chloride	7	\$ 264.48	Yes				
POZ Mix-Standard	35	\$ 165.30	Yes				
Bulk Truck Matl-Material Service Charge	190	\$ 128.19	No				
Pump Truck Mileage-Job to Nearest Camp	29	\$ 88.05	No				
Bulk Truck Mileage-Job to Nearest Bulk Plant	29	\$ 68.48	No				
Premium Gel (Bentonite)	3	\$ 58.70	Yes				

**Invoice Terms:**

Net 30

SubTotal: \$ 2,999.17  
 Discount Available ONLY if Invoice is Paid & Received  
 within listed terms of invoice: \$ (74.98)

SubTotal for Taxable Items:	\$ 2,059.67
SubTotal for Non-Taxable Items:	\$ 864.52
<b>Total:</b>	<b>\$ 2,924.19</b>
<b>Tax:</b>	<b>\$ 154.48</b>

7.50% Barton County Sales Tax

**Thank You For Your Business!**

**Amount Due: \$ 3,078.67**  
**Applied Payments:**  
**Balance Due: \$ 3,078.67**

Past Due Invoices are subject to a service charge (annual rate of 24%)  
 This does not include any applicable taxes unless it is listed.  
 ©2008-2013 Straker Investments, LLC. All rights reserved.

# QUALITY OILWELL CEMENTING, INC.

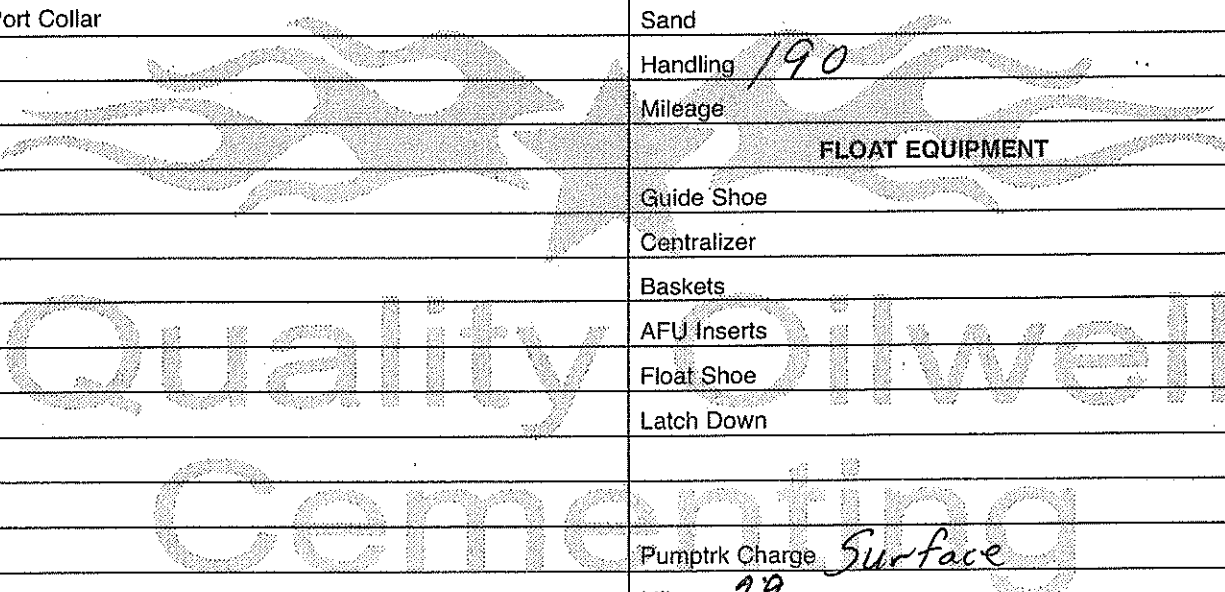
Federal Tax I.D.# 20-2886107

Phone 785-483-2025  
Cell 785-324-1041

Home Office P.O. Box 32 Russell, KS 67665

No. 1691

Date	4-13-17	Sec.	32	Twp.	16	Range	12	County	Barton	State	Ks	On Location		Finish	3:30 AM		
Lease								Lawrence Jacobs		Well No.		1					
Contractor								ww 14		Owner							
Type Job								Surface		To Quality Oilwell Cementing, Inc. You are hereby requested to rent cementing equipment and furnish cementer and helper to assist owner or contractor to do work as listed.							
Hole Size				12 1/4"		T.D.		3000' 387'		Charge To Palamiro Petroleum							
Csg.				8 5/8"		Depth		386'		Street							
Tbg. Size						Depth				City			State				
Tool						Depth				The above was done to satisfaction and supervision of owner agent or contractor.							
Cement Left in Csg.				20'		Shoe Joint		20'		Cement Amount Ordered 180 80/20 3%CC 2%Gel							
Meas Line						Displace		23 1/4 BLS									
<b>EQUIPMENT</b>																	
Pumptrk		18		No.		Cementer		Trawls		Common		145					
Bulktrk		3		No.		Helper		Doug		Poz. Mix		35					
Bulktrk		p.u.		No.		Driver		Rick		Gel.		3					
Bulktrk				No.		Driver				Calcium		7					
<b>JOB SERVICES &amp; REMARKS</b>																	
Remarks:								Cement did		Circulate		Hulls					
Rat Hole												Salt					
Mouse Hole												Flowseal					
Centralizers												Kol-Seal					
Baskets												Mud CLR 48					
D/V or Port Collar												CFL-117 or CD110 CAF 38					
												Sand					
												Handling 190					
												Mileage					
<b>FLOAT EQUIPMENT</b>																	
												Guide Shoe					
												Centralizer					
												Baskets					
												AFU Inserts					
												Float Shoe					
												Latch Down					
												Pumptrk Charge Surface					
												Mileage 29					
												Tax					
												Discount					
												Total Charge					
X Signature								John Brown									





**DIAMOND TESTING, LLC**  
P.O. Box 157  
**HOISINGTON, KANSAS 67544**  
(620) 653-7550 • (800) 542-7313  
LAWRENCEJACOBS1DST1

Company Palomino Petroleum, Inc. Lease & Well No. Lawrence Jacobs No. 1  
Elevation 1909 KB Formation Lansing Effective Pay \_\_\_\_\_ Ft. Ticket No. T605  
Date 4-15-17 Sec. 32 Twp. 16S Range 12W County Barton State Kansas  
Test Approved By Jerry A. Smith Diamond Representative Tim Venters

Formation Test No. 1 Interval Tested from 3,097 ft. to 3,150 ft. Total Depth 3,150 ft.  
Packer Depth 3,092 ft. Size 6 3/4 in. Packer Depth \_\_\_\_\_ ft. Size \_\_\_\_\_ in.  
Packer Depth 3,097 ft. Size 6 3/4 in. Packer Depth \_\_\_\_\_ ft. Size \_\_\_\_\_ in.  
Depth of Selective Zone Set \_\_\_\_\_ ft.

Top Recorder Depth (Inside) 3,085 ft. Recorder Number 5504 Cap. 5,000 psi.  
Bottom Recorder Depth (Outside) 3,147 ft. Recorder Number 11029 Cap. 5,025 psi.  
Below Straddle Recorder Depth \_\_\_\_\_ ft. Recorder Number \_\_\_\_\_ Cap. \_\_\_\_\_ psi.

Drilling Contractor WW Drilling, LLC - Rig 14 Drill Collar Length 118 ft I.D. 2 1/4 in.  
Mud Type Chemical Viscosity 68 Weight Pipe Length \_\_\_\_\_ ft I.D. \_\_\_\_\_ in.  
Weight 9.15 Water Loss 9.0 cc. Drill Pipe Length 2,951 ft I.D. 3 1/2 in.  
Chlorides 5,600 P.P.M. Test Tool Length 28 ft Tool Size 3 1/2-IF in.  
Jars: Make Sterling Serial Number Not Run Anchor Length 21' perf. w/32' drill pipe Size 4 1/2-FH in.  
Did Well Flow? No Reversed Out No Surface Choke Size 1 in. Bottom Choke Size 5/8 in.  
Main Hole Size 7 7/8 in. Tool Joint Size 4 1/2-XH in.

Blow: 1st Open: Weak, surface blow increasing to 1/4 in. No blow back during shut-in.

2nd Open: Very weak, surface blow lasting 3 1/2 mins. No blow back during shut-in.

Recovered 5 ft. of mud = .024600 bbls.  
Recovered \_\_\_\_\_ ft. of \_\_\_\_\_  
Recovered \_\_\_\_\_ ft. of \_\_\_\_\_  
Recovered \_\_\_\_\_ ft. of \_\_\_\_\_  
Recovered \_\_\_\_\_ ft. of \_\_\_\_\_  
Recovered \_\_\_\_\_ ft. of \_\_\_\_\_

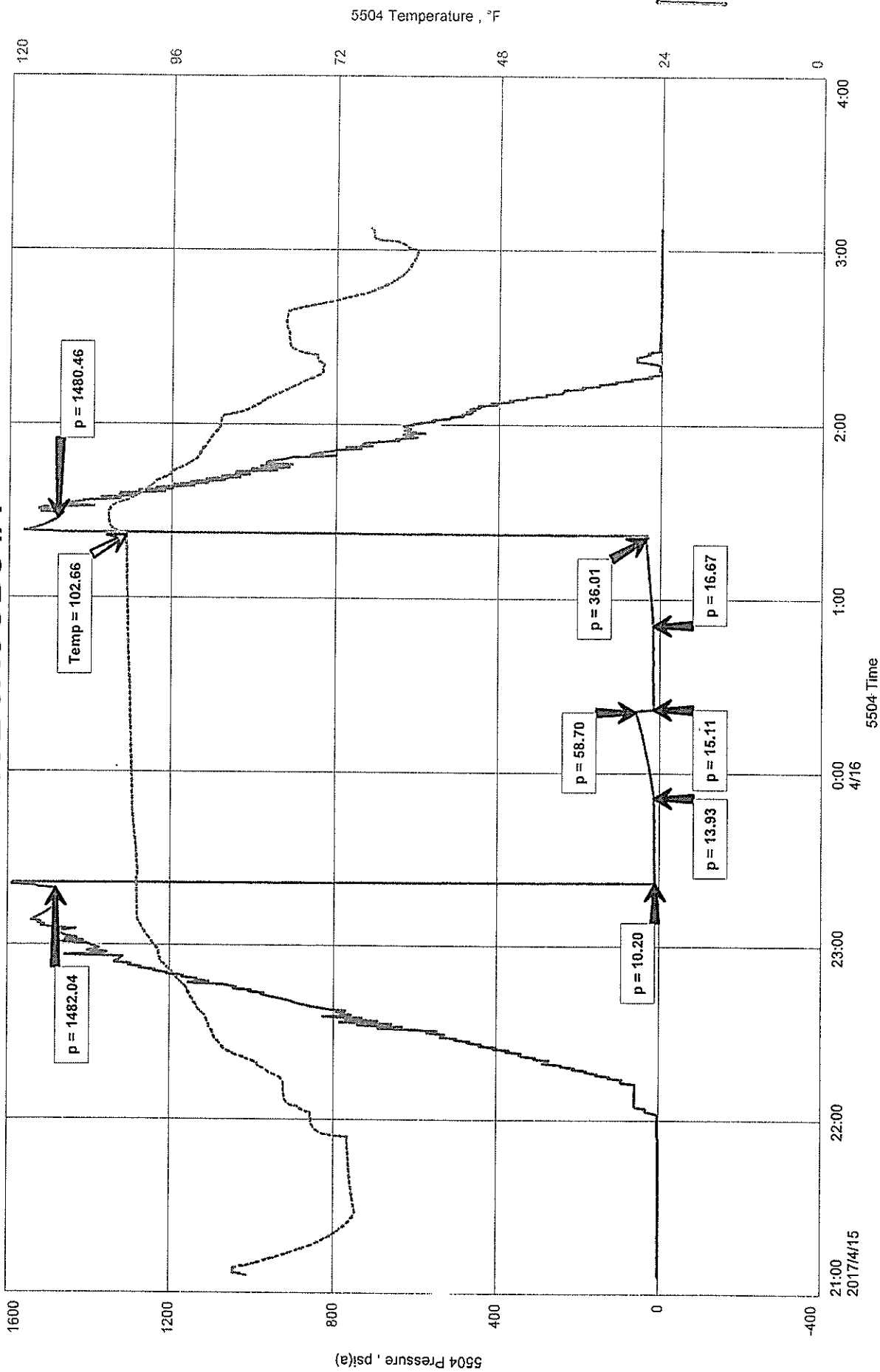
Remarks Tool Sample Grind Out: 100%-mud

Time Set Packer(s) 11:21 P.M. Time Started off Bottom 1:21 A.M. Maximum Temperature 103°  
Initial Hydrostatic Pressure.....(A) 1482 P.S.I.  
Initial Flow Period.....Minutes 30 (B) 10 P.S.I. to (C) 14 P.S.I.  
Initial Closed In Period.....Minutes 30 (D) 59 P.S.I.  
Final Flow Period.....Minutes 30 (E) 15 P.S.I. to (F) 17 P.S.I.  
Final Closed In Period.....Minutes 30 (G) 36 P.S.I.

PALOMINO PETROLEUM, INC.  
 DST #1, LANSING, 3097-3150  
 Start Test Date: 2017/04/15  
 Final Test Date: 2017/04/16

LAWRENCE JACOBS #1  
 Formation: DST #1, LANSING, 3097-3150  
 Pool: POOL EXT  
 Job Number: T605

# LAWRENCE JACOBS #1





**DIAMOND TESTING, LLC**  
P.O. Box 157  
**HOISINGTON, KANSAS 67544**  
(620) 653-7550 • (800) 542-7313  
LAWRENCEJACOBS1DST2

Company Palomino Petroleum, Inc. Lease & Well No. Lawrence Jacobs No. 1  
Elevation 1909 KB Formation Lower Kansas City Effective Pay \_\_\_\_\_ Ft. Ticket No. T606  
Date 4-16-17 Sec. 32 Twp. 16S Range 12W County Barton State Kansas  
Test Approved By Jerry A. Smith Diamond Representative Tim Venters

Formation Test No. 2 Interval Tested from 3,290 ft. to 3,360 ft. Total Depth 3,360 ft.  
Packer Depth 3,285 ft. Size 6 3/4 in. Packer Depth \_\_\_\_\_ ft. Size \_\_\_\_\_ in.  
Packer Depth 3,290 ft. Size 6 3/4 in. Packer Depth \_\_\_\_\_ ft. Size \_\_\_\_\_ in.  
Depth of Selective Zone Set \_\_\_\_\_ ft.

Top Recorder Depth (Inside) 3,278 ft. Recorder Number 5504 Cap. 5,000 psi.  
Bottom Recorder Depth (Outside) 3,357 ft. Recorder Number 11029 Cap. 5,025 psi.  
Below Straddle Recorder Depth \_\_\_\_\_ ft. Recorder Number \_\_\_\_\_ Cap. \_\_\_\_\_ psi.

Drilling Contractor VW Drilling, LLC - Rig 14 Drill Collar Length 118 ft I.D. 2 1/4 in.  
Mud Type Chemical Viscosity 58 Weight Pipe Length \_\_\_\_\_ ft I.D. \_\_\_\_\_ in.  
Weight 9.2 Water Loss 9.2 cc. Drill Pipe Length 3,144 ft I.D. 3 1/2 in.  
Chlorides 6,700 P.P.M. Test Tool Length 28 ft Tool Size 3 1/2-IF in.  
Jars: Make Sterling Serial Number Not Run Anchor Length 38' perf. w/32' drill pipe Size 4 1/2-FH in.  
Did Well Flow? No Reversed Out No Surface Choke Size 1 in. Bottom Choke Size 5/8 in.  
Main Hole Size 7 7/8 in. Tool Joint Size 4 1/2-XH in.

Blow: 1st Open: Weak, surface blow increasing to 1/4 in. No blow back during shut-in.

2nd Open: Very weak, surface blow lasting 4 mins. No blow back during shut-in.

Recovered 5 ft. of mud = .024600 bbls.  
Recovered \_\_\_\_\_ ft. of \_\_\_\_\_  
Recovered \_\_\_\_\_ ft. of \_\_\_\_\_  
Recovered \_\_\_\_\_ ft. of \_\_\_\_\_  
Recovered \_\_\_\_\_ ft. of \_\_\_\_\_  
Recovered \_\_\_\_\_ ft. of \_\_\_\_\_

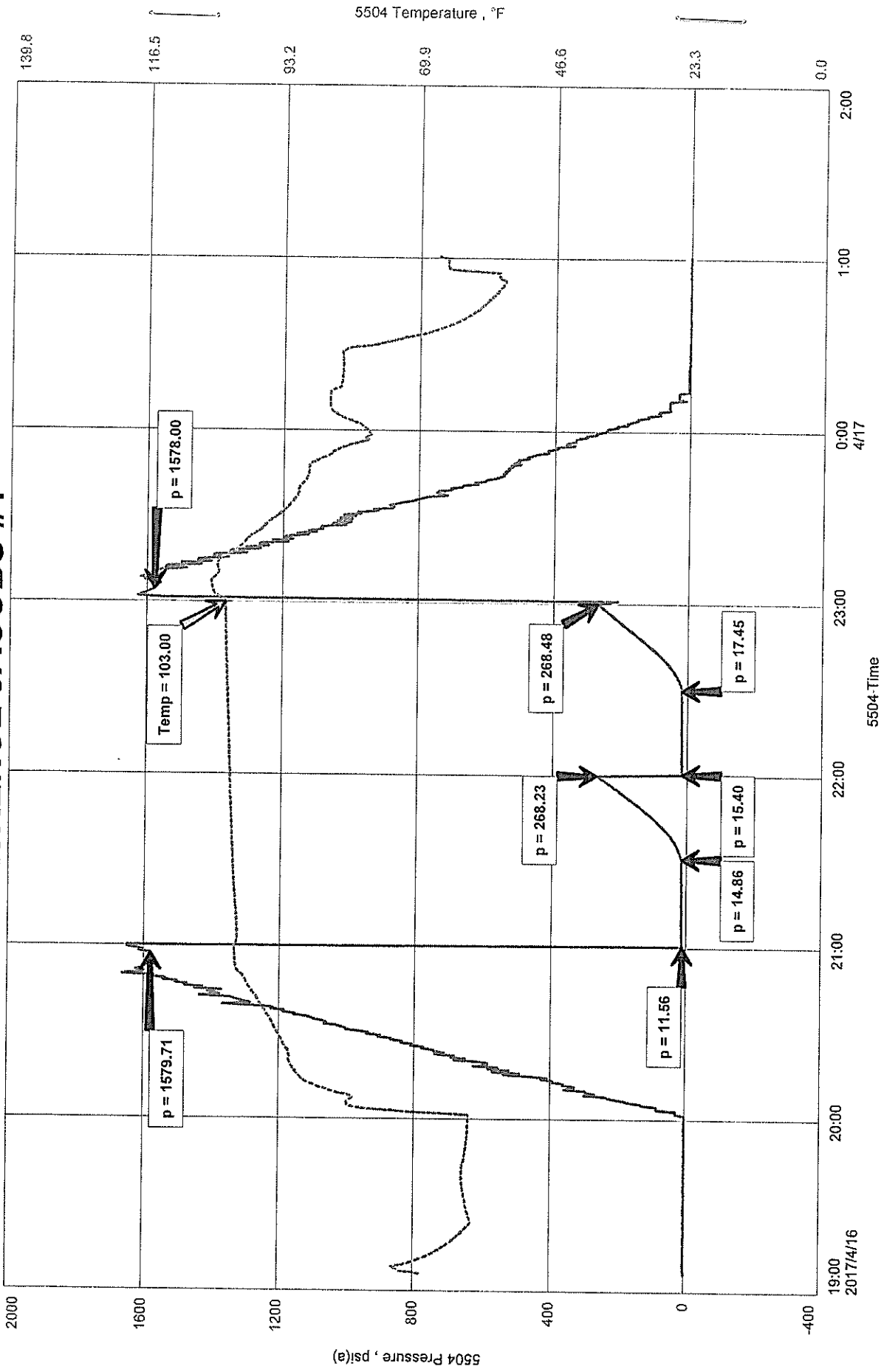
Remarks Tool Sample Grind Out: 100%-mud

Time Set Packer(s) 9:00 P.M. Time Started off Bottom 11:00 P.M. Maximum Temperature 103°  
Initial Hydrostatic Pressure.....(A) 1580 P.S.I.  
Initial Flow Period.....Minutes 30 (B) 12 P.S.I. to (C) 15 P.S.I.  
Initial Closed In Period.....Minutes 30 (D) 268 P.S.I.  
Final Flow Period.....Minutes 30 (E) 15 P.S.I. to (F) 17 P.S.I.  
Final Closed In Period.....Minutes 30 (G) 268 P.S.I.

PALOMINO PETROLEUM, INC.  
DST #2, LOWER KC, 3290-3360  
Start Test Date: 2017/04/16  
Final Test Date: 2017/04/17

LAWRENCE JACOBS #1  
Formation: DST #2, LOWER KC, 3290-3360  
Pool: POOL EXT  
Job Number: T606

# LAWRENCE JACOBS #1







**DIAMOND TESTING, LLC**  
P.O. Box 157  
**HOISINGTON, KANSAS 67544**  
(620) 653-7550 • (800) 542-7313  
LAWRENCEJACOBS1DST3

Company Palomino Petroleum, Inc. Lease & Well No. Lawrence Jacobs No. 1  
Elevation 1909 KB Formation Arbuckle Effective Pay \_\_\_\_\_ Ft. Ticket No. T607  
Date 4-17-17 Sec. 32 Twp. 16S Range 12W County Barton State Kansas  
Test Approved By Jerry A. Smith Diamond Representative Tim Venters

Formation Test No. 3 Interval Tested from 3,347 ft. to 3,377 ft. Total Depth 3,377 ft.  
Packer Depth 3,342 ft. Size 6 3/4 in. Packer Depth \_\_\_\_\_ ft. Size \_\_\_\_\_ in.  
Packer Depth 3,347 ft. Size 6 3/4 in. Packer Depth \_\_\_\_\_ ft. Size \_\_\_\_\_ in.  
Depth of Selective Zone Set \_\_\_\_\_ ft.

Top Recorder Depth (Inside) 3,335 ft. Recorder Number 5504 Cap. 5,000 psi.  
Bottom Recorder Depth (Outside) 3,374 ft. Recorder Number 11029 Cap. 5,025 psi.  
Below Straddle Recorder Depth \_\_\_\_\_ ft. Recorder Number \_\_\_\_\_ Cap. \_\_\_\_\_ psi.

Drilling Contractor WW Drilling, LLC - Rig 14 Drill Collar Length 118 ft I.D. 2 1/4 in.  
Mud Type Chemical Viscosity 51 Weight Pipe Length \_\_\_\_\_ ft I.D. \_\_\_\_\_ in.  
Weight 9.3 Water Loss 10.0 cc. Drill Pipe Length 3,201 ft I.D. 3 1/2 in.  
Chlorides 6,800 P.P.M. Test Tool Length 28 ft Tool Size 3 1/2-IF in.  
Jars: Make Sterling Serial Number Not Run Anchor Length 30 ft. Size 4 1/2-FH in.  
Did Well Flow? No Reversed Out No Surface Choke Size 1 in. Bottom Choke Size 5/8 in.  
Main Hole Size 7 7/8 in. Tool Joint Size 4 1/2-XH in.

Blow: 1st Open: Weak, surface blow increasing to 1/2 in. No blow back during shut-in.

2nd Open: Weak, surface blow throughout. No blow back during shut-in.

Recovered 2 ft. of clean oil = .009840 bbls.  
Recovered 5 ft. of oily mud = .024600 bbls. (Grind out: 49%-oil; 51%-mud)  
Recovered 7 ft. of TOTAL FLUID = .034440 bbls.  
Recovered \_\_\_\_\_ ft. of \_\_\_\_\_  
Recovered \_\_\_\_\_ ft. of \_\_\_\_\_  
Recovered \_\_\_\_\_ ft. of \_\_\_\_\_

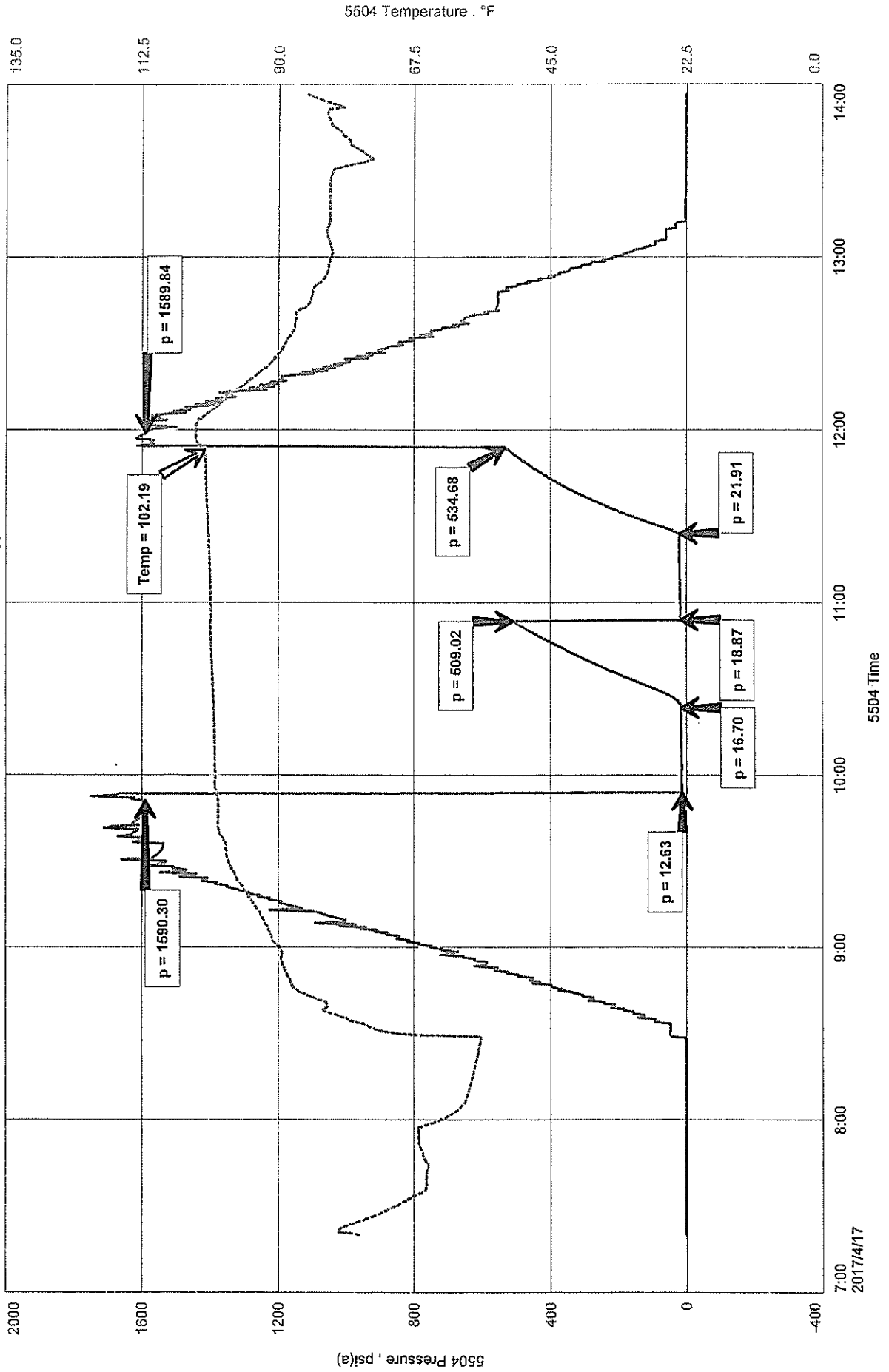
Remarks Tool Sample Grind Out: 52%-oil; 48%-mud

Time Set Packer(s) 9:53 A.M. Time Started off Bottom 11:53 A.M. Maximum Temperature 102°  
Initial Hydrostatic Pressure.....(A) 1590 P.S.I.  
Initial Flow Period.....Minutes 30 (B) 13 P.S.I. to (C) 17 P.S.I.  
Initial Closed In Period.....Minutes 30 (D) 509 P.S.I.  
Final Flow Period.....Minutes 30 (E) 19 P.S.I. to (F) 22 P.S.I.  
Final Closed In Period.....Minutes 30 (G) 535 P.S.I.

PALOMINO PETROLEUM, INC.  
DST #3, ARBUCKLE, 3347-3377  
Start Test Date: 2017/04/17  
Final Test Date: 2017/04/17

LAWRENCE JACOBS #1  
Formation: DST #3, ARBUCKLE, 3347-3377  
Pool: POOLEXT  
Job Number: T607

# LAWRENCE JACOBS #1





**DIAMOND TESTING, LLC**  
 P.O. Box 157  
**HOISINGTON, KANSAS 67544**  
 (620) 653-7550 • (800) 542-7313  
 LAWRENCEJACOBS1DST4

Company Palomino Petroleum, Inc. Lease & Well No. Lawrence Jacobs No. 1  
 Elevation 1909 KB Formation Arbuckle Effective Pay \_\_\_\_\_ Ft. Ticket No. T6  
 Date 4-17-17 Sec. 32 Twp. 16S Range 12W County Barton State Kansas  
 Test Approved By Jerry A. Smith Diamond Representative Tim Venters

Formation Test No. 4 Interval Tested from 3,375 ft. to 3,387 ft. Total Depth 3,387 ft.  
 Packer Depth 3,370 ft. Size 6 3/4 in. Packer Depth \_\_\_\_\_ ft. Size \_\_\_\_\_ in.  
 Packer Depth 3,375 ft. Size 6 3/4 in. Packer Depth \_\_\_\_\_ ft. Size \_\_\_\_\_ in.  
 Depth of Selective Zone Set \_\_\_\_\_ ft.

Top Recorder Depth (Inside) 3,363 ft. Recorder Number 5504 Cap. 5,000  
 Bottom Recorder Depth (Outside) 3,384 ft. Recorder Number 11029 Cap. 5,025  
 Below Straddle Recorder Depth \_\_\_\_\_ ft. Recorder Number \_\_\_\_\_ Cap. \_\_\_\_\_

Drilling Contractor WW Drilling, LLC - Rig 14 Drill Collar Length 118 ft. I.D. 2 1/2  
 Mud Type Chemical Viscosity 51 Weight Pipe Length \_\_\_\_\_ ft. I.D. \_\_\_\_\_  
 Weight 9.3 Water Loss 10.0 cc. Drill Pipe Length 3,229 ft. I.D. 3 1/2  
 Chlorides 6,800 P.P.M. Test Tool Length 28 ft. Tool Size 3 1/2  
 Jars: Make Sterling Serial Number Not Run Anchor Length 12 ft. Size 4 1/2-Ft  
 Did Well Flow? No Reversed Out No Surface Choke Size 1 in. Bottom Choke Size 5/8  
 Main Hole Size 7 7/8 in. Tool Joint Size 4 1/2-XI

Blow: 1st Open: Weak, 1/4 in. blow increasing to 7 ins. No blow back during shut-in.

2nd Open: Weak, surface blow increasing to 6 1/2 ins. No blow back during shut-in.

Recovered 10 ft. of muddy water w/oil specks = .142300 bbls. (Grind out: Oil specks; 51%-water; 49%-mud)  
 Recovered 60 ft. of muddy water = .853800 bbls. (Grind out: 56%-water; 44%-mud)  
 Recovered 120 ft. of mud cut water = .609020 bbls. (Grind out: 90%-water; 10%-mud) Chlorides: 11,000 Ppm PH: 8.0 RW: .62 @ 60°  
 Recovered 190 ft. of TOTAL FLUID = 1.605120 bbls.  
 Recovered \_\_\_\_\_ ft. of \_\_\_\_\_  
 Recovered \_\_\_\_\_ ft. of \_\_\_\_\_  
 Remarks Tool Sample Grind Out: <1%-Trace oil; 82%-water; 18%-mud

Time Set Packer(s) 10:09 P.M. Time Started off Bottom 12:09 A.M. Maximum Temperature 108°  
 Initial Hydrostatic Pressure.....(A) 1584 P.S.I.  
 Initial Flow Period.....Minutes 30 (B) 13 P.S.I. to (C) 69 P.S.I.  
 Initial Closed In Period.....Minutes 30 (D) 1133 P.S.I.  
 Final Flow Period.....Minutes 30 (E) 69 P.S.I. to (F) 95 P.S.I.  
 Final Closed In Period.....Minutes 30 (G) 1121 P.S.I.  
 Final Hydrostatic Pressure.....(H) 1583 P.S.I.

PALOMINO PETROLEUM, INC.  
DST #4, ARBUCKLE, 3375-3387  
Start Test Date: 2017/04/17  
Final Test Date: 2017/04/18

LAWRENCE JACOBS #1  
Formation: DST #4, ARBUCKLE, 3375-3387  
Pool: POOL EXT  
Job Number: T608

# LAWRENCE JACOBS #1

