



Fall & Associates

Stake and Elevation Service

P.O. Box 222

Pretty Prairie, KS. 67570

785-243-7506

Date 5-25-17

Invoice Number 0522171

MURFIN DRILLING

1-11

Youngmeyer 'A'

Operator

Number

Farm Name

Elk-KS

11

29s

8e

2050'FNL 2200'FEL

County-State

S

T

R

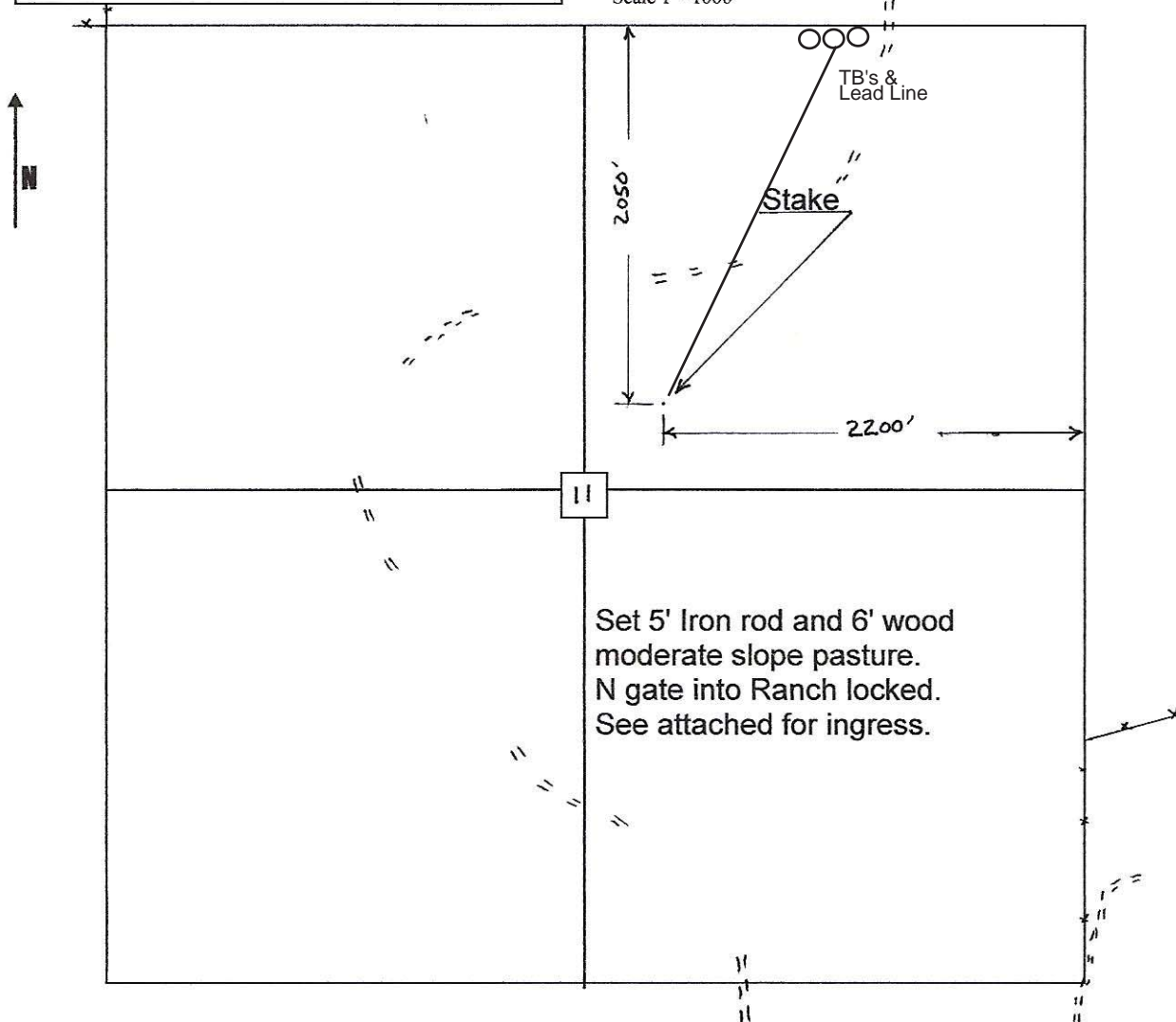
Location

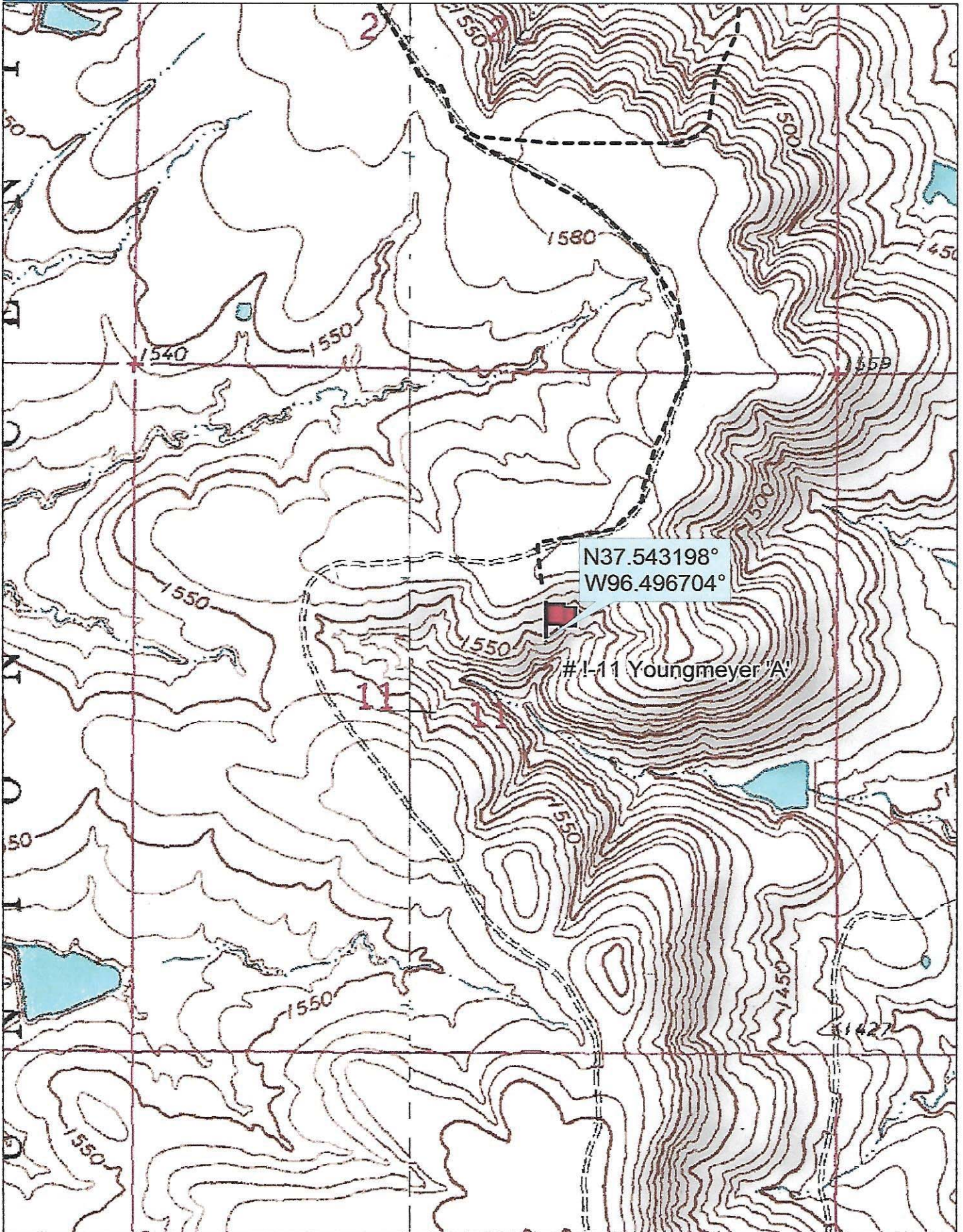
Murfin Drilling
250 N. Water
Suite 300
Wichita, KS. 67202

Elevation 1539 Gr.

Ordered By: Shauna

Scale 1"=1000'





Data use subject to license.

© DeLorme. Topo North America™ 9.

www.delorme.com

