

Tim J. Lauer

Petroleum Geologist

Office 316.832.0530
Cell 316.253.1275

GEOLOGIST'S REPORT

DRILLING TIME AND SAMPLE LOG

38.58654388
-100.7595322

COMPANY	Cobalt Energy LLC
LEASE	Herrmann Unit 'A' #1-36
FIELD	Wildcat
LOCATION	2611' FSL, 153' FEL
SEC	36 TWSP 25S RGE 21W
COUNTY	Ford STATE Kansas
CONTRACTOR	Murfin Drilling Rig #16
SPUD	2-27-2017 COMP 3-6-2017
RTD	4800 LTD 4800
MUD UP	3600 TYPE MUD Chemical
SAMPLES SAVED FROM	3900 TO RTD
DRILLING TIME KEPT FROM	3900 TO RTD
SAMPLES EXAMINED FROM	3900 TO RTD
GEOLOGICAL SUPERVISION FROM	4000 to RTD
GEOLOGIST ON WELL	Tim J. Lauer

ELEVATIONS
KB 2249

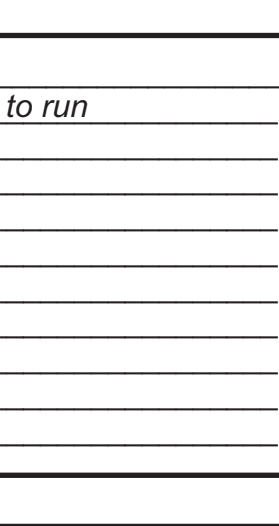
DF _____
GL 2244

Measurements Are All From
2249 KB

CASING
CONDUCTOR _____
SURFACE **8 5/8" @ 207'**
PRODUCTION **5 1/2" @ 4799'**

ELECTRICAL SURVEYS
Pioneer - DCP, DIL, ML, PE
Sonic - Engr: Justin Henrickson

FORMATION TOPS	ELECTRIC LOG	SAMPLE LOG
Anhydrite	1311 (+938)	1310 (+939)
Heebner	3974 (-1725)	3973 (-1724)
Br Lime	4083 (-1834)	4082 (-1833)
Lansing	4095 (-1846)	4094 (-1845)
Hushpuckney	4400 (-2151)	4404 (-2155)
Cherokee Shale	4623 (-2374)	4623 (-2374)
Mississippi	4703 (-2454)	4711 (-2462)
Miss Warsaw	4721 (-2472)	4720 (-2471)
Miss Osage	4752 (-2503)	4750 (-2501)
Total Depth	4800 (-2551)	4800 (-2551)



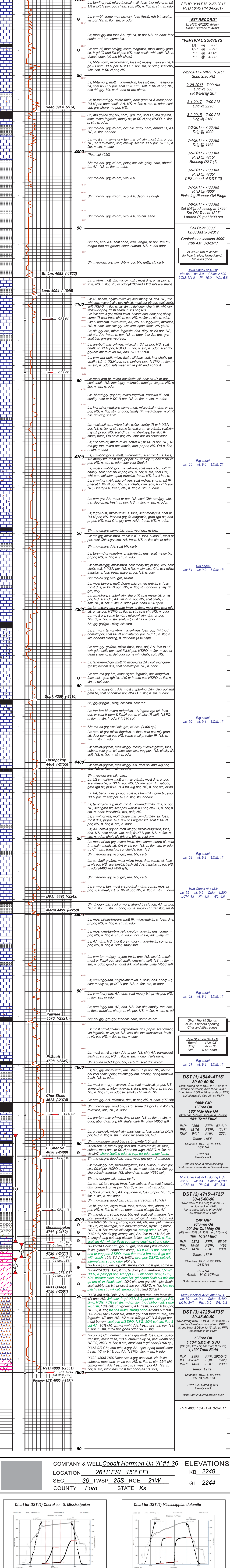
COMPANY & WELL **Cobalt Herrmann Unit 'A' #1-36**
ELEVATIONS
KB 2249
GL 2244
LOCATION **2611' FSL, 153' FEL of section**
SEC 36 TWSP 25S RGE 21W
COUNTY **Ford STATE Ks**

REMARKS
Due to drill stem test results, and log evaluation, operator elected to run production casing to further evaluate the location.

Respectfully submitted,
Tim J. Lauer
Tim J. Lauer
3/8/2017

LEGEND

	Anhydrite		Sandstone		Limestone		Shale		Carb Sh		Cherty LS		Chert		Dolomite
--	-----------	--	-----------	--	-----------	--	-------	--	---------	--	-----------	--	-------	--	----------



COMPANY & WELL **Cobalt Energy LLC**
LOCATION **2611' FSL, 153' FEL**
SEC **36 TWSP 25S RGE 21W**
COUNTY **Ford STATE Ks**

ELEVATIONS
KB 2249
GL 2244

