



GEOLOGISTS' REPORT
DRILL TIME &
SAMPLE LOG

COMPANY **COBALT ENERGY, LLC**
LEASE **Jamison Unit 'A' #1-5**
FIELD **Wildcat**

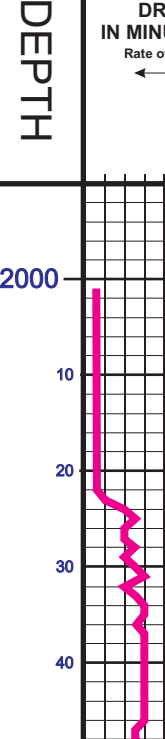
ELEVATIONS
KB **2577**

LOCATION **132° FSL & 475' FWL**
SEC. **5** TWP. **14S** RGE. **27W**
COUNTY **Gove** STATE **KS**
CONTRACTOR **Martin Drilling Co., Rig #21**

RTD **4356'** LTD **4357'**
SPUD **03/27/17** COMP **04/17/17**
MUD UP **3400'** TYPE MUD **Chemical**
CASING
Surfaces **8.5" @ 255'**
Production **5.5" @ 4343'**

SAMPLES SAVED FROM **3600'** TO **RTD**
DRILLING TIME KEPT FROM **3480'** TO **RTD**
SAMPLING EXAMINED FROM **3600'** TO **RTD**
GEOLOGICAL SUPERVISION FROM **3640'** TO **RTD**

GEOLOGIST ON WELL **Corey N. Baker**
FORMATION TOPS **ELECTRIC LOG**
Anhydrite **2021 (+556)**
Base of Anhydrite **2059 (+518)**
Heebner **3719 (-1142)**
Lansing **3757 (-1180)**
Stark **3998 (-1413)**
BKC **4029 (-1463)**
Pawnee **4328 (-1760)**
RTD **4357 (-1780)**



REMARKS Based on positive DST, log & sample results, 5.5" casing will be run to put the Jamison Unit 'A' #1-5 into production.

Respectfully Submitted,
Corey Baker
Vice President - Exploration
Cobalt Energy, LLC

API #15-063-22303-00-00

LEGEND

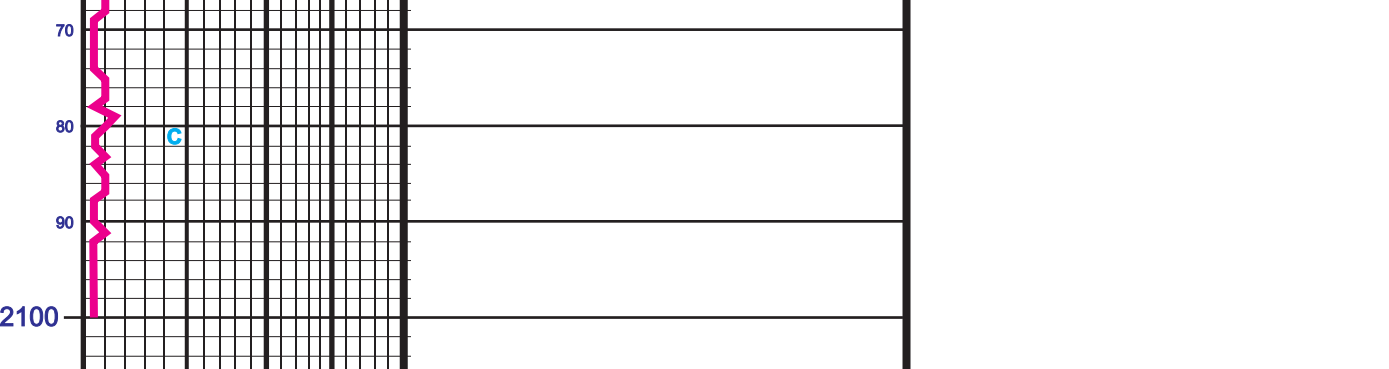


Table with columns: LITHOLOGY, DEPTH, DRILLING TIME IN MINUTES PER FOOT, OIL SHOWS, SAMPLE DESCRIPTION, REMARKS

Skip drilling time from 2100-3600', start sample descriptions @ 3600'

3/22/17 - MURT, RURT Prep to Spud
3/28/17 - 7:00 AM Drig @ 497' set 8-5/8" @ 255'
3/29/17 - 7:00 AM Drig @ 2643'
3/30/17 - 7:00 AM idle @ 2875'
shut down due to rain, water trucks can't get on location
3/31/17 - 7:00 AM idle @ 2875'
4/01/17 - 7:00 AM Drig @ 3575'
4/02/17 - 7:00 AM TH @ 3870' for DST #1
4/03/17 - 7:00 AM TOOH @ 3930' for DST #2
4/04/17 - 7:00 AM CFS @ 4025'
4/05/17 - 7:00 AM Drig @ 4170'
4/06/17 - 7:00 AM Drig @ 4293'
4/07/17 - 7:00 AM TH w/bit to circ, LDDP & set 5.5" production casing

Call Point 3400' 10:30 PM 3/31/17
Geologist on location 3640' 10:00 AM 4/01/17

Heebner 3719 (-1142)

Lansing 3757 (-1180)

DST #1 (3822'-3870') Lansing 'E & F'
Open 30" Shut-in 45" Open 60" Shut-in 90"
1st Open: Good blow, B.O.B. in 2"
2nd Open: Weak blow, built to 2.5"
FSI: No return blow
Rec: 620' Mud Cut Water (30% m, 70% w)
1178' Saltwater
1798' Total Recovery
IFP: 100-567#
FFP: 566-943#
SIP: 1088-1092#

DST #2 (3930'-3930') Kansas City 'H'
Open 30" Shut-in 45" Open 60" Shut-in 90"
1st Open: Weak blow, built to 1.5"
2nd Open: Weak blow, built to 2"
FSI: No return blow
Rec: 61' Heavy Oil Cut Mud (40% oil, 60% mud)
122' Slight Oil Cut Mud (5% oil, 95% mud)
183' Total Recovery
IFP: 17-42#
FFP: 52-84#
SIP: 1017-1037#

DST #3 (3930'-3965') Kansas City 'I'
Open 30" Shut-in 45" Open 60" Shut-in 90"
1st Open: Weak blow, built to 5"
2nd Open: Weak blow, built to 5"
FSI: No return blow
246' GIP
Rec: 61' Slight Gas Cut Muddy Oil (5% gas, 40% mud, 55% oil)
61' Slight Gas Cut Muddy Oil (2% gas, 48% mud, 50% oil)
122' Total Recovery
IFP: 15-30#
FFP: 36-55#
SIP: *1142-1161# *both slip's still building

Stark 3990 (-1413)

DST #4 (4222'-4280') Fort Scott
Open 30" Shut-in 45" Open 60" Shut-in 90"
1st Open: Weak surface blow thru-out
2nd Open: Weak blow, built to 4"
FSI: No return blow
183' GIP
Rec: 61' Very Slight Oil & Gas Cut Mud (5% gas, 2% oil, 95% mud)
IFP: 33-42#
FFP: 50-57#
SIP: 785-1156#
*when opening tool, hose was not connected to bucket mandrel for about 30 seconds

Cherokee Shale 4271 (-1694)

DST #5 (4298'-4356') Pawnee
Open 30" Shut-in 45" Open 60" Shut-in 90"
1st Open: Good blow, built to B.O.B. in 19"
2nd Open: Good blow, built to B.O.B. in 19"
FSI: No return blow
124' GIP
Rec: 616' Gassy Clean Oil (20% gas, 80% oil)
124' GIP Oil & Mud (20% g, 40% o, 40% m)
740' Total Recovery
IFP: 89-199#
FFP: 221-307#
SIP: 955-1045#

Mississippian 4337 (-1760)

DST #6 (4356'-4356') RTD
Open 30" Shut-in 45" Open 60" Shut-in 90"
1st Open: Good blow, built to B.O.B. in 2"
2nd Open: Good blow, built to B.O.B. in 19"
FSI: No return blow
124' GIP
Rec: 616' Gassy Clean Oil (20% gas, 80% oil)
124' GIP Oil & Mud (20% g, 40% o, 40% m)
740' Total Recovery
IFP: 89-199#
FFP: 221-307#
SIP: 955-1045#

RTD 4356 (-1779)
LTD 4357 (-1780)

Company **COBALT ENERGY, LLC** Elevation **2577 KB**
Lease **Jamison Unit 'A' #1-5**
Location **132° FSL & 475' FWL** SEC. **5** TWP. **14S** RGE. **27W**
County **Gove** State **Kansas**

Chart for DST #1 (Lansing 'E & F')

Chart for DST #2 (Kansas City 'H')

Chart for DST #3 (Kansas City 'I')

Chart for DST #4 (Kansas City 'J, K & L')

Chart for DST #5 (Fort Scott)

Chart for DST #6 (Mississippian)

Chart for DST #1 (Lansing 'E & F')

Chart for DST #2 (Kansas City 'H')

Chart for DST #3 (Kansas City 'I')

Chart for DST #4 (Kansas City 'J, K & L')

Chart for DST #5 (Fort Scott)

Chart for DST #6 (Mississippian)

Chart for DST #1 (Lansing 'E & F')

Chart for DST #2 (Kansas City 'H')

Chart for DST #3 (Kansas City 'I')

Chart for DST #4 (Kansas City 'J, K & L')

Chart for DST #5 (Fort Scott)

Chart for DST #6 (Mississippian)

Chart for DST #1 (Lansing 'E & F')

Chart for DST #2 (Kansas City 'H')

Chart for DST #3 (Kansas City 'I')

Chart for DST #4 (Kansas City 'J, K & L')

Chart for DST #5 (Fort Scott)

Chart for DST #6 (Mississippian)

Chart for DST #1 (Lansing 'E & F')

Chart for DST #2 (Kansas City 'H')

Chart for DST #3 (Kansas City 'I')

Chart for DST #4 (Kansas City 'J, K & L')

Chart for DST #5 (Fort Scott)

Chart for DST #6 (Mississippian)

Chart for DST #1 (Lansing 'E & F')

Chart for DST #2 (Kansas City 'H')

Chart for DST #3 (Kansas City 'I')

Chart for DST #4 (Kansas City 'J, K & L')

Chart for DST #5 (Fort Scott)

Chart for DST #6 (Mississippian)

Chart for DST #1 (Lansing 'E & F')

Chart for DST #2 (Kansas City 'H')

Chart for DST #3 (Kansas City 'I')

Chart for DST #4 (Kansas City 'J, K & L')

Chart for DST #5 (Fort Scott)

Chart for DST #6 (Mississippian)

Chart for DST #1 (Lansing 'E & F')

Chart for DST #2 (Kansas City 'H')

Chart for DST #3 (Kansas City 'I')

Chart for DST #4 (Kansas City 'J, K & L')

Chart for DST #5 (Fort Scott)

Chart for DST #6 (Mississippian)

Chart for DST #1 (Lansing 'E & F')

Chart for DST #2 (Kansas City 'H')

Chart for DST #3 (Kansas City 'I')

Chart for DST #4 (Kansas City 'J, K & L')

Chart for DST #5 (Fort Scott)

Chart for DST #6 (Mississippian)

Chart for DST #1 (Lansing 'E & F')

Chart for DST #2 (Kansas City 'H')

Chart for DST #3 (Kansas City 'I')

Chart for DST #4 (Kansas City 'J, K & L')

Chart for DST #5 (Fort Scott)

Chart for DST #6 (Mississippian)

Chart for DST #1 (Lansing 'E & F')

Chart for DST #2 (Kansas City 'H')

Chart for DST #3 (Kansas City 'I')

Chart for DST #4 (Kansas City 'J, K & L')