

# KEVIN L. KESSLER

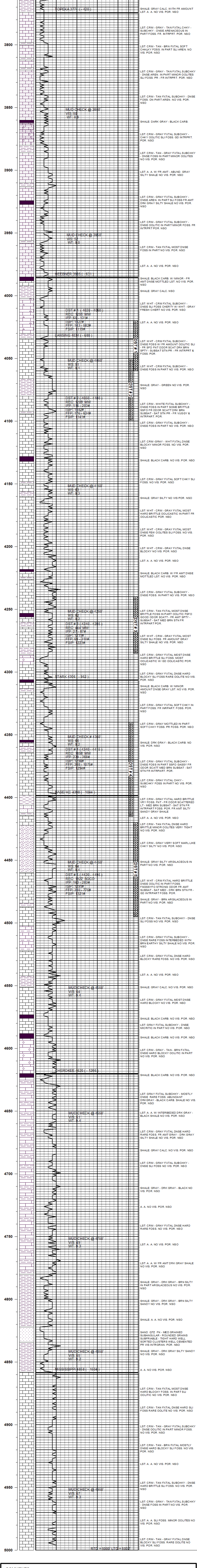
## CONSULTING PETROLEUM GEOLOGIST

( 316 ) 522 - 7338

|   |                             |                               |
|---|-----------------------------|-------------------------------|
| <b>OPERATOR :</b> MULL DRILLING CO. INC.  |                             | <b>ELEVATION</b>              |
| <b>LEASE :</b> ALAN UNIT                  | <b>WELL # :</b> 1 - 26      | <b>KB:</b> 3354'              |
| <b>LOCATION :</b> 712' FSL & 2594' FWL    |                             | <b>GL:</b> 3341'              |
| <b>SEC :</b> 26                           | <b>TWP :</b> 16 S           | <b>RGE :</b> 37 W             |
| <b>COUNTY :</b> WICHITA                   |                             | <b>STATE :</b> KANSAS         |
| <b>CONTRACTOR:</b> DUKE DRILLING RIG # 07 |                             | <b>CASING RECORD:</b>         |
| <b>COMM:</b> 03 - 15 - 2017               | <b>COMP:</b> 03 - 26 - 2017 | <b>SURFACE:</b> 8 5/8" @ 265' |
| <b>RTD:</b> 5000'                         | <b>LTD:</b> 5002            | <b>PRODUCTION:</b> 5 1/2"     |
| <b>GEOLOGICAL SUPERVISION FROM:</b> 3700' |                             | <b>TO: RTD</b>                |
| <b>SAMPLES SAVED FROM:</b> 3700'          |                             | <b>TO: RTD</b>                |

| FORMATION:  | TOP  | LOG DATUM | TOP  | SAMPLE DATUM | COMP. | ELECTRICAL SURVEYS: |
|-------------|------|-----------|------|--------------|-------|---------------------|
| TOPEKA      | 3774 | - 420     | 3774 | - 420        | - 05  | DIL                 |
| HEEBNER     | 3985 | - 631     | 3985 | - 631        | - 09  | CNL / CDL           |
| LANSING     | 4034 | - 680     | 4034 | - 680        | - 09  | MICRO               |
| STARK       | 4306 | - 952     | 4306 | - 952        | - 03  | SONIC               |
| BASE/ KC    | 4398 | - 1044    | 4398 | - 1044       | - 07  |                     |
| CHEROKEE    | 4620 | - 1266    | 4620 | - 1266       | - 02  |                     |
| MISSISSIPPI | 4858 | - 1504    | 4858 | - 1504       | - 11  |                     |

**REFERENCE WELL FOR STRUCTURAL COMPARISON:**  
MID CONT. # 1- 25 LUCKY JACK 25 - 16S - 37W WICHITA CO. KS



**COMMENTS :**  
5 1/2" PRODUCTION CASING WAS SET TO FURTHER EVALUATE THE PRODUCTIVITY OF THIS WELL

KEVIN L. KESSLER