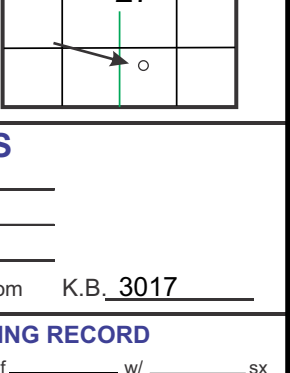


GEOLOGICAL REPORT FIELD

Larry A. Nicholson

NAD 83
38.8049200
-101.0854200

COMPANY **Culbreath Oil & Gas Company, Inc.**
 API # **15-109-21548** FIELD **Wildcat**
 LEASE **Krannawitter** WELL # **#1-27**
 LOCATION **W2 NW SW SE**
 SURVEY **995 FSL 2542 FEL**
 SECTION **27** TWP **14S** RGE **34W**
 COUNTY **Logan** STATE **Kansas**



CONTRACTOR **Southwind TP Was Platt** Rig # **1**
 SPUD **05-18-18 5:30 pm** COMP **ELEVATIONS**
 RTD **4748 12:36pm 05-24-18** LTD **4746** K.B. **3017**
 MUD UP AT **3450** D.F. **3007**
 MUD TYPE **Chemical, Andy's Aaron Blew** All measurements from **K.B. 3017**

FROM	TO	RTD	CONDUCTOR	OF	WF	SH
3500	3500	RTD	286	8.58	180	58
3500	3500	RTD	286	8.58	180	58
3500	3500	RTD	286	8.58	180	58

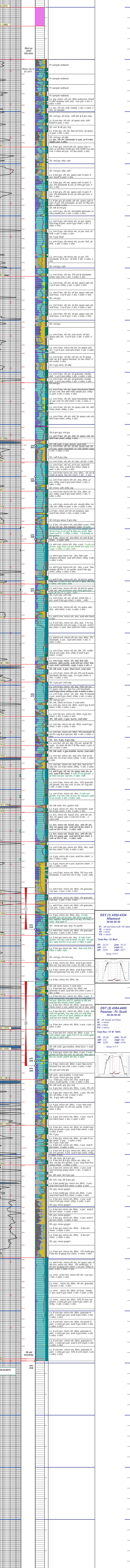
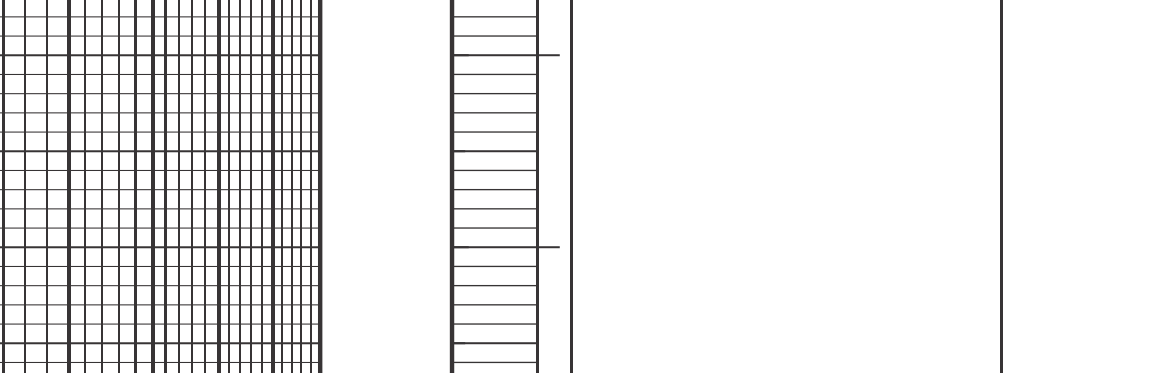
ELECTRICAL SURVEYS **HillACRT, POR, MICRO, BSAT, SURV SON**

FORMATION	SAMPLE TOPS	SURSEA DATUM	ELEG LOG TOPS	SURSEA DATUM	REFERENCE WELL
Anhydrite			2400	+617	
Topoka			3554	-567	
Lansing			3917	-817	
Muncie Creek			4080	-1063	
Stark Sh			4169	-1152	
BKC			4250	-1233	
Marm			4310	-1293	
Pawnee			4398	-1381	
Fort Scott Ls			4450	-1433	
Cherokee Sh			4478	-1461	
Miss			4649	-1632	
RTD			4748	-1731	
LTD			4746	-1729	

REMARKS & RECOMMENDATIONS:
 Based on shows and drill stem test the well was P&A
 *Note Drill Time and Electric logs correlate and are on same depth.

LAN 7/62, Modified 5/05, 11/11, 4/12 Hanover, KS 66845 1inch = 25.4mm 8.5 x 97.5 216 mm x 2460 mm

LEGEND



REMARKS
 DST (1) 4292-4334 Altamont 30-60-30
 IF: wk surf blow built 1/8"-dred
 IS: n return
 FS: n blow
 Total Rec: 15' Mud
 FP: 22-27 FFP: 31-31
 SIP: 211 FFP: 62
 HP: 2225 FHP: 2071
 Temp 117 F

DST (2) 4384-4465 Pawnee - Ft. Scott 30-30-30
 IF: wk vweak surf blow
 IS: n return
 FS: n blow
 Total Rec: 15' M 100%
 FP: 55-56 FFP: 56-58
 SIP: 312 FFP: 135
 HP: 2220 FHP: 2142
 Temp 117 F

COMPANY **Culbreath Oil & Gas Company, Inc.** ELEVATIONS
 LEASE **Krannawitter #1-27 W2 NW SW SE** K.B. **3017**
 LOCATION **995 FSL 2542 FEL** D.F. **3007**
 COUNTY **Logan** STATE **Ks** All measurements from **K.B. 3017**