



TEMPORARY ABANDONMENT WELL APPLICATION

OPERATOR: License# _____
 Name: _____
 Address 1: _____
 Address 2: _____
 City: _____ State: _____ Zip: _____ + _____
 Contact Person: _____
 Phone: (_____) _____
 Contact Person Email: _____
 Field Contact Person: _____
 Field Contact Person Phone: (_____) _____

API No. 15- _____
 Spot Description: _____
 _____ - _____ - _____ - _____ Sec. _____ Twp. _____ S. R. _____ E W
 _____ feet from N / S Line of Section
 _____ feet from E / W Line of Section
 GPS Location: Lat: _____, Long: _____
(e.g. xx.xxxxx) (e.g. -xxx.xxxxx)
 Datum: NAD27 NAD83 WGS84
 County: _____ Elevation: _____ GL KB
 Lease Name: _____ Well #: _____
 Well Type: (check one) Oil Gas OG WSW Other: _____
 SWD Permit #: _____ ENHR Permit #: _____
 Gas Storage Permit #: _____
 Spud Date: _____ Date Shut-In: _____

	Conductor	Surface	Production	Intermediate	Liner	Tubing
Size						
Setting Depth						
Amount of Cement						
Top of Cement						
Bottom of Cement						

Casing Fluid Level from Surface: _____ How Determined? _____ Date: _____
 Casing Squeeze(s): _____ to _____ w / _____ sacks of cement, _____ to _____ w / _____ sacks of cement. Date: _____
(top) (bottom) (top) (bottom)
 Do you have a valid Oil & Gas Lease? Yes No
 Depth and Type: Junk in Hole at _____ Tools in Hole at _____ Casing Leaks: Yes No Depth of casing leak(s): _____
(depth) (depth)
 Type Completion: ALT. I ALT. II Depth of: DV Tool: _____ w / _____ sacks of cement Port Collar: _____ w / _____ sack of cement
(depth) (depth)
 Packer Type: _____ Size: _____ Inch Set at: _____ Feet
 Total Depth: _____ Plug Back Depth: _____ Plug Back Method: _____

Geological Data:

Formation Name	Formation Top	Formation Base	Completion Information
1. _____	At: _____	to _____ Feet	Perforation Interval _____ to _____ Feet or Open Hole Interval _____ to _____ Feet
2. _____	At: _____	to _____ Feet	Perforation Interval _____ to _____ Feet or Open Hole Interval _____ to _____ Feet

UNDER PENALTY OF PERJURY I HEREBY ATTEST THAT THE INFORMATION CONTAINED HEREIN IS TRUE AND CORRECT TO THE BEST OF MY KNOWLEDGE

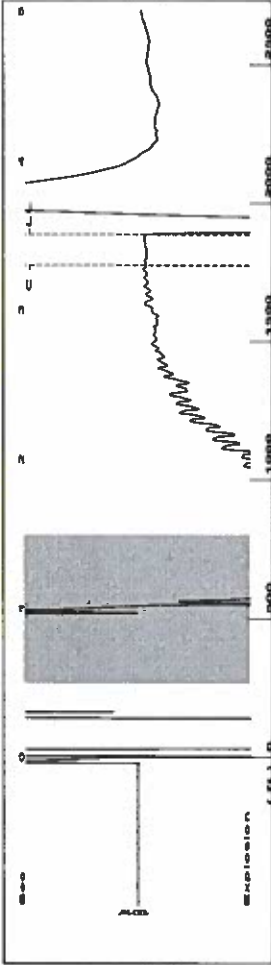
Submitted Electronically

Do NOT Write in This Space - KCC USE ONLY	Date Tested: _____	Results: _____	Date Plugged: _____	Date Repaired: _____	Date Put Back in Service: _____
	Review Completed by: _____ Comments: _____				
TA Approved: <input type="checkbox"/> Yes <input type="checkbox"/> Denied Date: _____					

Mail to the Appropriate KCC Conservation Office:

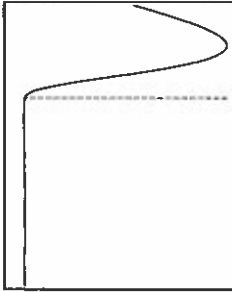
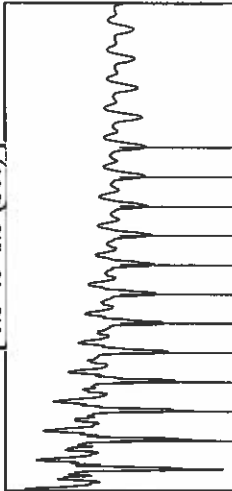
	KCC District Office #1 - 210 E. Frontview, Suite A, Dodge City, KS 67801	Phone 620.682.7933
	KCC District Office #2 - 3450 N. Rock Road, Building 600, Suite 601, Wichita, KS 67226	Phone 316.337.7400
	KCC District Office #3 - 1500 SW Seventh Steet, Chanute, KS 66720	Phone 620.432.2300
	KCC District Office #4 - 2301 E. 13th Street, Hays, KS 67601-2651	Phone 785.261.6250

Group: TAD Well: GCC 1-530 (acquired on: 06/23/17 15:26:14)

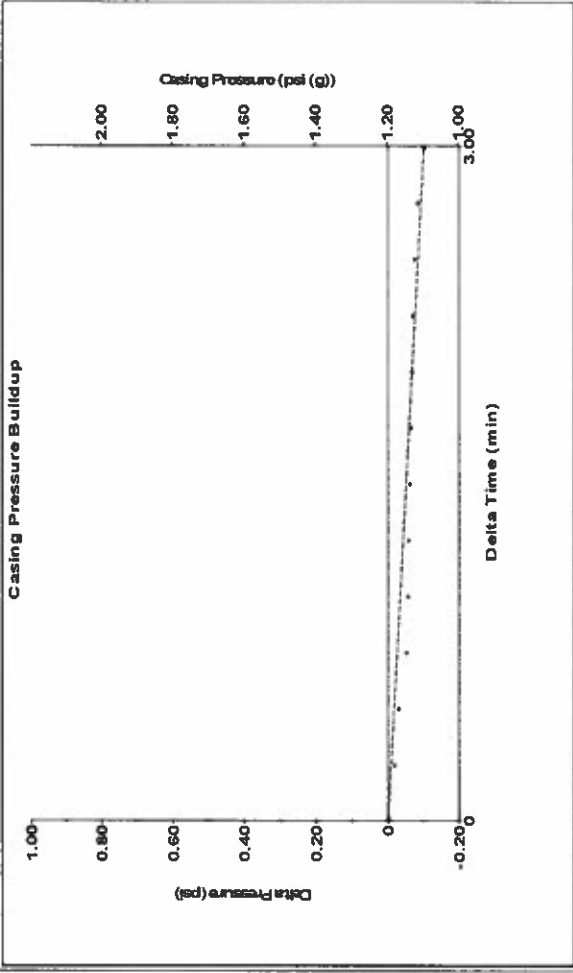


Filter Type High Pass Automatic Collar Count Yes Time 3.503 sec
 Manual Acoustic Veloc 1051.41 ft/s Manual JTS/sec 16.5837 Jts
 Depth 1885.25 ft

1.05 to 1.5 (Sec)



Group: TAD Well: GCC 1-530 (acquired on: 06/23/17 15:26:14)



Change in Pressure -0.10 psi PT8746 Range
 Change in Time 3.00 min

Analysis Method: Automatic

Group: TAD Well: GCC 1-530 (acquired on: 06/23/17 15:26:14)

Production	Potential	Casing Pressure	1.2 psi (g)
Current	-*- BBL/D	Casing Pressure Buildup	-0.101 psi
Oil	-*- BBL/D	Gas/Liquid Interface Pressure	2.2 psi (g)
Water	-*- Mscf/D	Liquid Level Depth	1885.25 ft
Gas	-*- Mscf/D	Pump Intake Depth	4812.00 ft
IPR Method	Vogel	Formation Depth	4812.00 ft
PBHP/SBHP	-*-		
Production Efficiency	0.0		
Oil	40 deg API		
Water	1.05 Sp.Gr.H2O		
Gas	0.90 Sp.Gr.AIR		
Acoustic Velocity	1076.36 ft/s		
Formation Submergence			
Total Gaseous Liquid Column HT (TVD)	2927 ft		
Equivalent Gas Free Liquid HT (TVD)	2927 ft		
Acoustic Test			

Producing	Annular Gas Flow	0 Mscf/D
	% Liquid	100 %
Pump Intake	964.0 psi (g)	
Producing BHP	964.0 psi (g)	
Static BHP	-*- psi (g)	

Group: TAD Well: GCC 1-530 (acquired on: 06/23/17 15:26:14)

Acoustic Velocity	1076.36 ft/s	Joints counted	51
Joints Per Second	16.9774 jts/sec	Joints to liquid level	59.4717
Depth to liquid level	1885.25 ft	Filter Width	14.5837
Automatic Collar Count	Yes	Time to 1st Collar	0.292
			3.296

Conservation Division
District Office No. 1
210 E. Frontview, Suite A
Dodge City, KS 67801



Phone: 620-682-7933
<http://kcc.ks.gov/>

Pat Apple, Chairman
Shari Feist Albrecht, Commissioner
Jay Scott Emler, Commissioner

Sam Brownback, Governor

June 30, 2017

Katherine McClurkan
Merit Energy Company, LLC
13727 Noel, Road, Suite 1200
Dallas, TX 75240

Re: Temporary Abandonment
API 15-055-21861-00-01
GCC 1-530
NW/4 Sec.30-23S-33W
Finney County, Kansas

Dear Katherine McClurkan:

"Your temporary abandonment (TA) application for the well listed above has been approved. In accordance with K.A.R. 82-3-111 the TA status of this well will expire 06/30/2018.

- * If you return this well to service or plug it, please notify the District Office.
- * If you sell this well you are required to file a Transfer of Operator form, T-1.
- * If the well will remain temporarily abandoned, you must submit a new TA application, CP-111, before 06/30/2018.

You may contact me at the number above if you have questions.

Very truly yours,

Scott Alberg"