



TEMPORARY ABANDONMENT WELL APPLICATION

All blanks must be complete

OPERATOR: License# _____
 Name: _____
 Address 1: _____
 Address 2: _____
 City: _____ State: _____ Zip: _____ + _____
 Contact Person: _____
 Phone: (_____) _____
 Contact Person Email: _____
 Field Contact Person: _____
 Field Contact Person Phone: (_____) _____

API No. 15- _____
 Spot Description: _____
 _____ - _____ - _____ - _____ Sec. _____ Twp. _____ S. R. _____ E W
 _____ feet from N / S Line of Section
 _____ feet from E / W Line of Section
 GPS Location: Lat: _____, Long: _____
(e.g. xx.xxxxx) (e.g. -xxx.xxxxx)
 Datum: NAD27 NAD83 WGS84
 County: _____ Elevation: _____ GL KB
 Lease Name: _____ Well #: _____
 Well Type: (check one) Oil Gas OG WSW Other: _____
 SWD Permit #: _____ ENHR Permit #: _____
 Gas Storage Permit #: _____
 Spud Date: _____ Date Shut-In: _____

	Conductor	Surface	Production	Intermediate	Liner	Tubing
Size						
Setting Depth						
Amount of Cement						
Top of Cement						
Bottom of Cement						

Casing Fluid Level from Surface: _____ How Determined? _____ Date: _____
 Casing Squeeze(s): _____ to _____ w / _____ sacks of cement, _____ to _____ w / _____ sacks of cement. Date: _____
(top) (bottom) (top) (bottom)
 Do you have a valid Oil & Gas Lease? Yes No
 Depth and Type: Junk in Hole at _____ Tools in Hole at _____ Casing Leaks: Yes No Depth of casing leak(s): _____
(depth) (depth)
 Type Completion: ALT. I ALT. II Depth of: DV Tool: _____ w / _____ sacks of cement Port Collar: _____ w / _____ sack of cement
(depth) (depth)
 Packer Type: _____ Size: _____ Inch Set at: _____ Feet
 Total Depth: _____ Plug Back Depth: _____ Plug Back Method: _____

Geological Data:

Formation Name	Formation Top	Formation Base	Completion Information
1. _____	At: _____	to _____ Feet	Perforation Interval _____ to _____ Feet or Open Hole Interval _____ to _____ Feet
2. _____	At: _____	to _____ Feet	Perforation Interval _____ to _____ Feet or Open Hole Interval _____ to _____ Feet

UNDER PENALTY OF PERJURY I HEREBY ATTEST THAT THE INFORMATION CONTAINED HEREIN IS TRUE AND CORRECT TO THE BEST OF MY KNOWLEDGE

Submitted Electronically

Do NOT Write in This Space - KCC USE ONLY

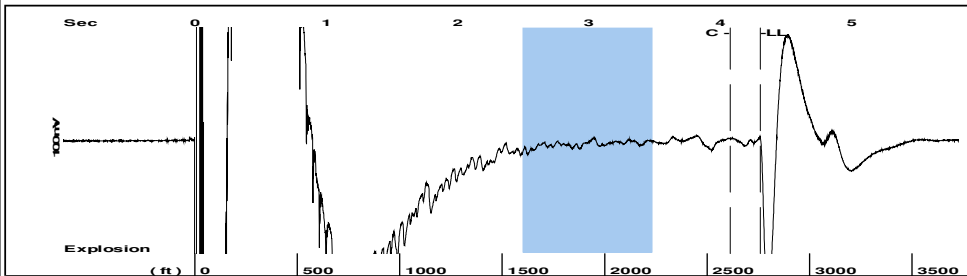
Date Tested: _____ Results: _____ Date Plugged: _____ Date Repaired: _____ Date Put Back in Service: _____

Review Completed by: _____ Comments: _____

TA Approved: Yes Denied Date: _____

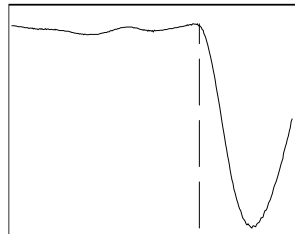
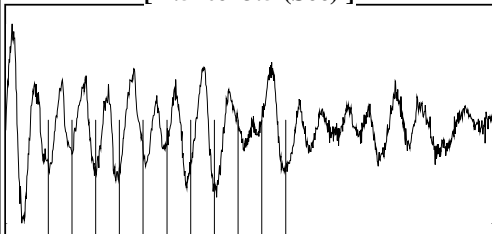
Mail to the Appropriate KCC Conservation Office:

	KCC District Office #1 - 210 E. Frontview, Suite A, Dodge City, KS 67801	Phone 620.682.7933
	KCC District Office #2 - 3450 N. Rock Road, Building 600, Suite 601, Wichita, KS 67226	Phone 316.337.7400
	KCC District Office #3 - 1500 SW Seventh Steet, Chanute, KS 66720	Phone 620.432.2300
	KCC District Office #4 - 2301 E. 13th Street, Hays, KS 67601-2651	Phone 785.261.6250

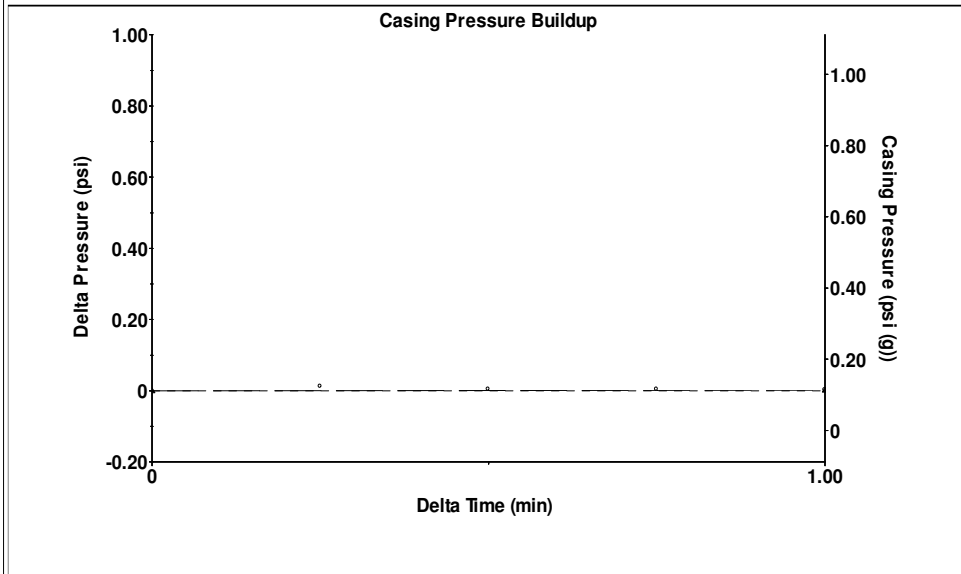


Filter Type High Pass Automatic Collar Count Yes Time 4.307 sec
 Manual Acoustic Velocity 1292.7 ft/s Manual JTS/sec 20.4918 Joints 87.5011 Jts
 Depth 2759.96 ft

[2.5 to 3.5 (Sec)]

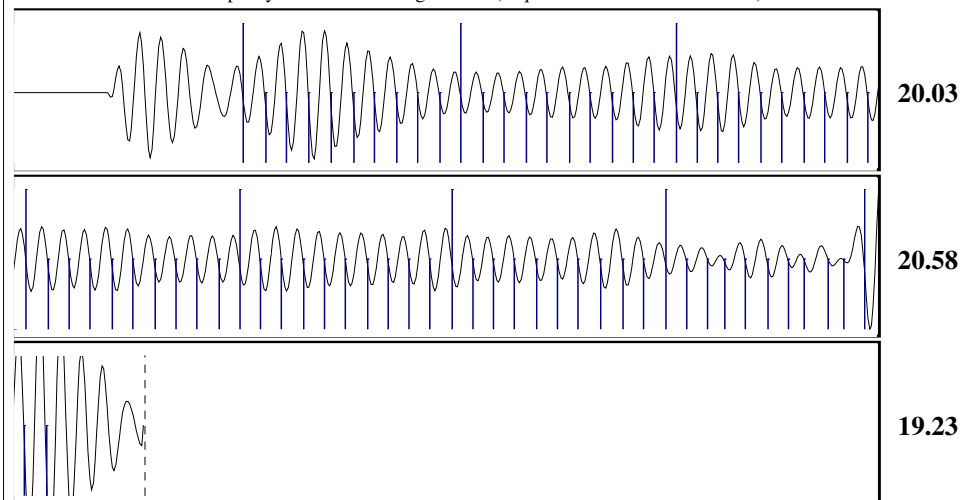


Analysis Method: Automatic



Change in Pressure 0.00 psi PT8525
 Range 0 - ? psi
 Change in Time 1.00 min

Production	Potential	Casing Pressure		Producing
Oil - *-	- *- BBL/D	0.1 psi (g)		Annular Gas Flow 0 Mscf/D
Water - *-	- *- BBL/D	Casing Pressure Buildup 0.002 psi		% Liquid 100 %
Gas - *-	- *- Mscf/D	1.00 min		
IPR Method	Vogel	Gas/Liquid Interface Pressure -1.7 psi (g)		
PBHP/SBHP	- *-			
Production Efficiency	0.0			
Oil 40 deg.API		Liquid Level Depth 2759.96 ft		
Water 1.05 Sp.Gr.H2O		Pump Intake Depth 2965.00 ft		
Gas 0.73 Sp.Gr.AIR		Formation Depth 2962.00 ft		
Acoustic Velocity 1281.62 ft/s				
Formation Submergence				Pump Intake 67.7 psi (g)
Total Gaseous Liquid Column HT (TVD) 205 ft				Producing BHP 66.7 psi (g)
Equivalent Gas Free Liquid HT (TVD) 205 ft				Static BHP - *- psi (g)
Acoustic Test				



Acoustic Velocity	1281.62 ft/s	Joints counted	72
Joints Per Second	20.316 jts/sec	Joints to liquid level	87.5011
Depth to liquid level	2759.96 ft	Filter Width	18.4918 22.4918
Automatic Collar Count	Yes	Time to 1st Collar	0.532 4.076

June 30, 2017

Daniel Busch
Linn Operating, LLC
600 TRAVIS STE 1400
HOUSTON, TX 77002-3018

Re: Temporary Abandonment
API 15-189-20451-00-00
LOGAN A1--2
NE/4 Sec.02-32S-35W
Stevens County, Kansas

Dear Daniel Busch:

"Your temporary abandonment (TA) application for the well listed above has been approved. In accordance with K.A.R. 82-3-111 the TA status of this well will expire 06/30/2018.

- * If you return this well to service or plug it, please notify the District Office.
- * If you sell this well you are required to file a Transfer of Operator form, T-1.
- * If the well will remain temporarily abandoned, you must submit a new TA application, CP-111, before 06/30/2018.

You may contact me at the number above if you have questions.

Very truly yours,

Scott Alberg"