



TEMPORARY ABANDONMENT WELL APPLICATION

All blanks must be complete

OPERATOR: License# _____
 Name: _____
 Address 1: _____
 Address 2: _____
 City: _____ State: _____ Zip: _____ + _____
 Contact Person: _____
 Phone: (_____) _____
 Contact Person Email: _____
 Field Contact Person: _____
 Field Contact Person Phone: (_____) _____

API No. 15- _____
 Spot Description: _____
 _____ - _____ - _____ - _____ Sec. _____ Twp. _____ S. R. _____ E W
 _____ feet from N / S Line of Section
 _____ feet from E / W Line of Section
 GPS Location: Lat: _____, Long: _____
(e.g. xx.xxxxx) (e.g. -xxx.xxxxx)
 Datum: NAD27 NAD83 WGS84
 County: _____ Elevation: _____ GL KB
 Lease Name: _____ Well #: _____
 Well Type: (check one) Oil Gas OG WSW Other: _____
 SWD Permit #: _____ ENHR Permit #: _____
 Gas Storage Permit #: _____
 Spud Date: _____ Date Shut-In: _____

| | Conductor | Surface | Production | Intermediate | Liner | Tubing |
|------------------|-----------|---------|------------|--------------|-------|--------|
| Size | | | | | | |
| Setting Depth | | | | | | |
| Amount of Cement | | | | | | |
| Top of Cement | | | | | | |
| Bottom of Cement | | | | | | |

Casing Fluid Level from Surface: _____ How Determined? _____ Date: _____
 Casing Squeeze(s): _____ to _____ w / _____ sacks of cement, _____ to _____ w / _____ sacks of cement. Date: _____
(top) (bottom) (top) (bottom)
 Do you have a valid Oil & Gas Lease? Yes No
 Depth and Type: Junk in Hole at _____ Tools in Hole at _____ Casing Leaks: Yes No Depth of casing leak(s): _____
(depth) (depth)
 Type Completion: ALT. I ALT. II Depth of: DV Tool: _____ w / _____ sacks of cement Port Collar: _____ w / _____ sack of cement
(depth) (depth)
 Packer Type: _____ Size: _____ Inch Set at: _____ Feet
 Total Depth: _____ Plug Back Depth: _____ Plug Back Method: _____

Geological Data:

| Formation Name | Formation Top | Formation Base | Completion Information |
|----------------|---------------|----------------|--|
| 1. _____ | At: _____ | to _____ Feet | Perforation Interval _____ to _____ Feet or Open Hole Interval _____ to _____ Feet |
| 2. _____ | At: _____ | to _____ Feet | Perforation Interval _____ to _____ Feet or Open Hole Interval _____ to _____ Feet |

UNDER PENALTY OF PERJURY I HEREBY ATTEST THAT THE INFORMATION CONTAINED HEREIN IS TRUE AND CORRECT TO THE BEST OF MY KNOWLEDGE

Submitted Electronically

| | | | | | |
|---|--|----------------|---------------------|----------------------|---------------------------------|
| Do NOT Write in This Space - KCC USE ONLY | Date Tested: _____ | Results: _____ | Date Plugged: _____ | Date Repaired: _____ | Date Put Back in Service: _____ |
| | Review Completed by: _____ Comments: _____ | | | | |
| TA Approved: <input type="checkbox"/> Yes <input type="checkbox"/> Denied Date: _____ | | | | | |

Mail to the Appropriate KCC Conservation Office:

| | | |
|--|--|--------------------|
| | KCC District Office #1 - 210 E. Frontview, Suite A, Dodge City, KS 67801 | Phone 620.682.7933 |
| | KCC District Office #2 - 3450 N. Rock Road, Building 600, Suite 601, Wichita, KS 67226 | Phone 316.337.7400 |
| | KCC District Office #3 - 1500 SW Seventh Steet, Chanute, KS 66720 | Phone 620.432.2300 |
| | KCC District Office #4 - 2301 E. 13th Street, Hays, KS 67601-2651 | Phone 785.261.6250 |

General

Well ID 126098
 Well Lukins 3410 2-26H
 Company Sandridge
 Operator - * -
 Lease Name Lukins 3410 2-26H
 Elevation 1321.00 ft
 Production Method Other
 Dataset Description
 Second Shot

Comment

Surface Unit

Manufacturer - * -
 Unit Class Conventional
 Unit API Number - * -
 Measured Stroke Length - * - in
 Rotation CW
 Counter Balance Effect (Weights Level) - * - Klb
 Weight Of Counter Weights 2000 lb

Prime Mover

Motor Type Electric
 Rated HP - * - HP
 Run Time 24 hr/day
 MFG/Comment
 - * -

Electric Motor Parameters

Rated Full Load AMPS - * -
 Rated Full Load RPM - * -
 Synchronous RPM 1200
 Voltage - * -
 Hertz 60
 Phase 3
 Power Consumption 5
 Power Demand 8 \$/KW

Tubulars

Tubing OD 2.875 in
 Casing OD 7.000 in
 Average Joint Length 33.680 ft
 Anchor Depth - * - ft
 Kelly Bushing 19.00 ft

Pump

Plunger Diameter - * - in
 Pump Intake Depth 5693.00 ft
 **Total Rod Length < Pump Depth

Polished Rod

Polished Rod Diameter - * - in

Rod String

| | Top Taper | Taper 2 | Taper 3 | Taper 4 | Taper 5 | Taper 6 |
|--------------|-----------|---------|---------|---------|---------|----------|
| Rod Type | - * - | - * - | - * - | - * - | - * - | - * - |
| Rod Length | - * - | - * - | - * - | - * - | - * - | - * - ft |
| Rod Diameter | - * - | - * - | - * - | - * - | - * - | - * - in |
| Rod Weight | 0.0 | 0.0 | 0.0 | 0.0 | 0.0 | 0.0 lb |

Total Rod Length 0
 Total Rod Weight 0.00

Damp Up 0.05
 Damp Down 0.05

Conditions

Pressure

Static BHP 1930.2 psi (g)
 Static BHP Method Acoustic
 Static BHP Date 06/27/2017

Producing BHP - * - psi (g)
 Producing BHP Method - * -
 Producing BHP Date - * -
 Formation Depth 5732.00 ft

Surface Producing Pressures

Tubing Pressure 200.0 psi (g)
 Casing Pressure 157.3 psi (g)

Casing Pressure Buildup

Change in Pressure 0.104 psi
 Over Change in Time 2.75 min

Production

Oil Production 0 BBL/D
 Water Production 1 BBL/D
 Gas Production - * - Mscf/D
 Production Date 06/26/2017

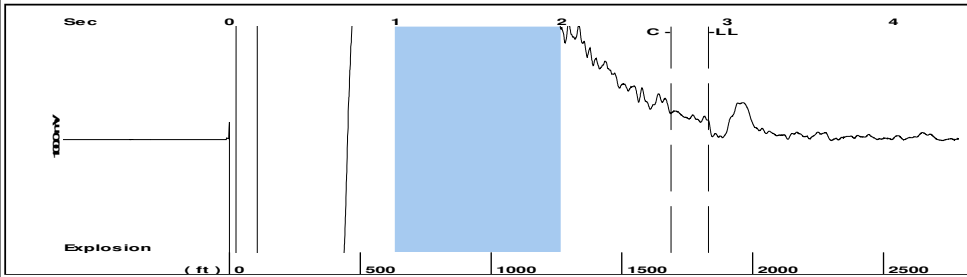
Temperatures

Surface Temperature 70 deg F
 Bottomhole Temperature 150 deg F

Fluid Properties

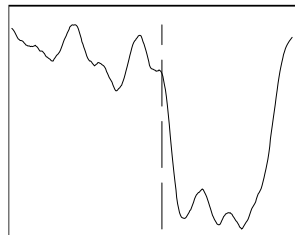
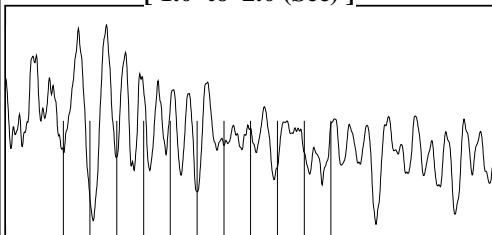
Oil API 40 deg.API
 Water Specific Gravity 1.05 Sp.Gr.H2O

Group: 2017 Sandridge Grp 6 Well: Lukins 3410 2-26H (acquired on: 06/27/17 07:43:52)



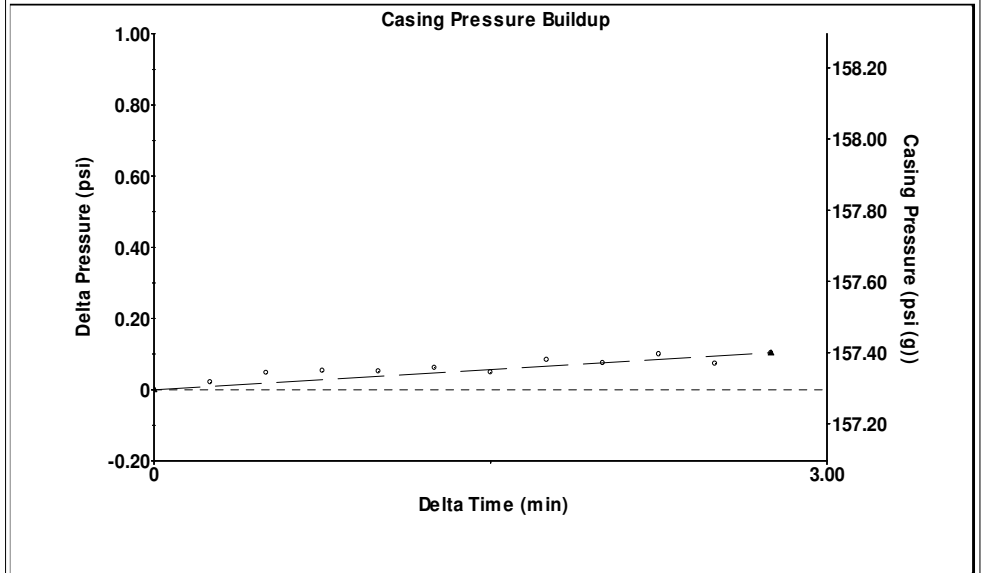
Filter Type High Pass Automatic Collar Count Yes Time 2.886 sec
Manual Acoustic Veloc 1224.73 ft/s Manual JTS/sec 18.1818 Joints 54.3697 Jts
Depth 1831.17 ft

[1.0 to 2.0 (Sec)]



Analysis Method: Automatic

Group: 2017 Sandridge Grp 6 Well: Lukins 3410 2-26H (acquired on: 06/27/17 07:43:52)



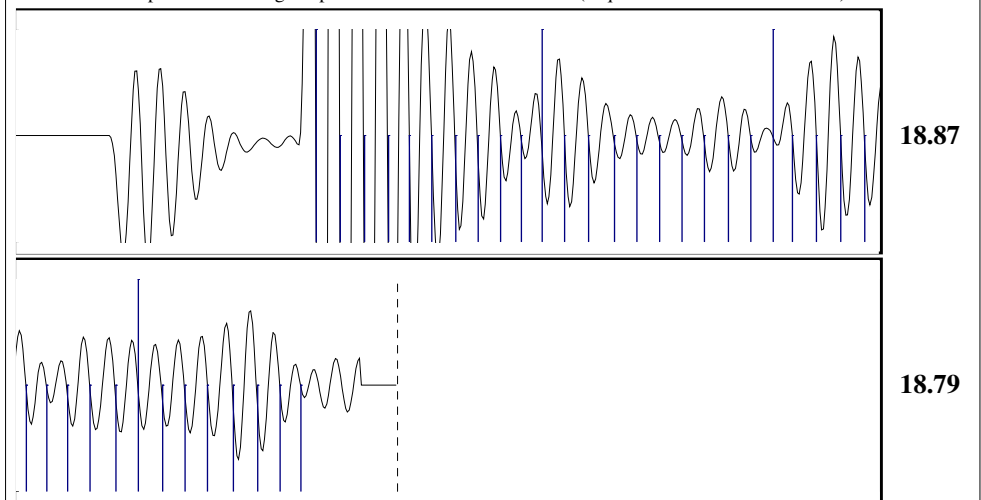
Change in Pressure 0.10 psi PT16722
Change in Time 2.75 min Range 0 - ? psi

Group: 2017 Sandridge Grp 6 Well: Lukins 3410 2-26H (acquired on: 06/27/17 07:43:52)

| | | | |
|-----------------------|--------------|-------------------------------|---------------------|
| Production Current | Potential | Casing Pressure | Static |
| Oil 0 | - * - BBL/D | 157.3 psi (g) | |
| Water 1 | - * - BBL/D | Casing Pressure Buildup | Oil Column Height |
| Gas - * - | - * - Mscf/D | 0.104 psi | MD 0 ft |
| | | 2.75 min | |
| IPR Method | Vogel | Gas/Liquid Interface Pressure | Water Column Height |
| PBHP/SBHP | - * - | 165.4 psi (g) | MD 3882 ft |
| Production Efficiency | 0.0 | | |
| Oil 40 deg.API | | Liquid Level Depth | |
| Water 1.05 Sp.Gr.H2O | | 1831.17 ft | |
| Gas 0.69 Sp.Gr.AIR | | Tubing Intake Depth | |
| | | 5693.00 ft | |
| Acoustic Velocity | 1269 ft/s | Formation Depth | |
| | | 5732.00 ft | |
| | | Static BHP | |
| | | 1930.2 psi (g) | |

Lukins 3410 2-26H

Group: 2017 Sandridge Grp 6 Well: Lukins 3410 2-26H (acquired on: 06/27/17 07:43:52)



| | | | |
|------------------------|-----------------|------------------------|-----------------|
| Acoustic Velocity | 1269 ft/s | Joints counted | 37 |
| Joints Per Second | 18.8391 jts/sec | Joints to liquid level | 54.3697 |
| Depth to liquid level | 1831.17 ft | Filter Width | 16.1818 20.1818 |
| Automatic Collar Count | Yes | Time to 1st Collar | 0.696 2.66 |

Conservation Division
District Office No. 1
210 E. Frontview, Suite A
Dodge City, KS 67801



Phone: 620-682-7933
<http://kcc.ks.gov/>

Pat Apple, Chairman
Shari Feist Albrecht, Commissioner
Jay Scott Emler, Commissioner

Sam Brownback, Governor

June 30, 2017

Laci Bevans
SandRidge Exploration and Production LLC
123 ROBERT S. KERR AVE
OKLAHOMA CITY, OK 73102-6406

Re: Temporary Abandonment
API 15-007-24064-01-00
LUKINS 3410 2-26H
SE/4 Sec.26-34S-10W
Barber County, Kansas

Dear Laci Bevans:

"Your temporary abandonment (TA) application for the well listed above has been approved. In accordance with K.A.R. 82-3-111 the TA status of this well will expire 06/30/2018.

- * If you return this well to service or plug it, please notify the District Office.
- * If you sell this well you are required to file a Transfer of Operator form, T-1.
- * If the well will remain temporarily abandoned, you must submit a new TA application, CP-111, before 06/30/2018.

You may contact me at the number above if you have questions.

Very truly yours,

Scott Alberg"