

L.D. DRILLING, INC.
 SCHREIBER LEASE
 SW. 1/4, SECTION 26, T17S, R24W
 NESS COUNTY, KANSAS

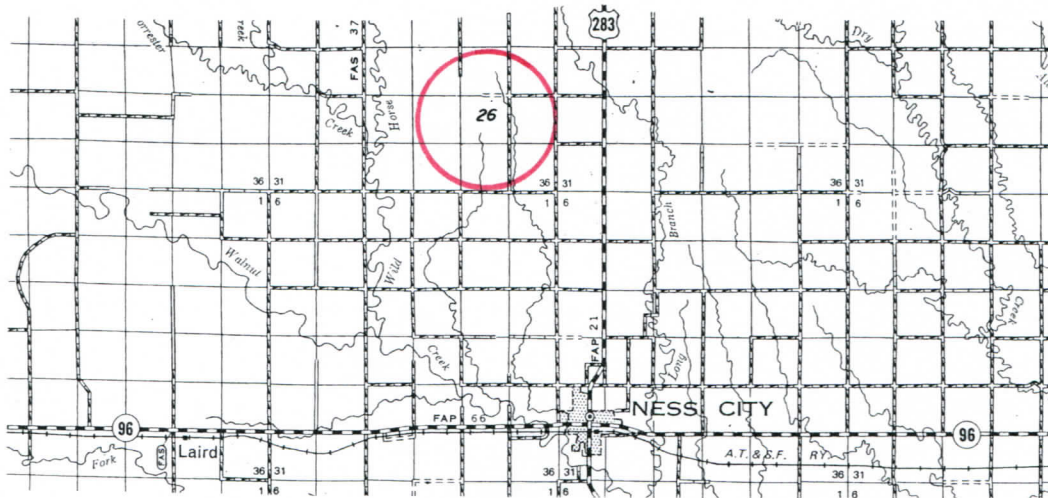
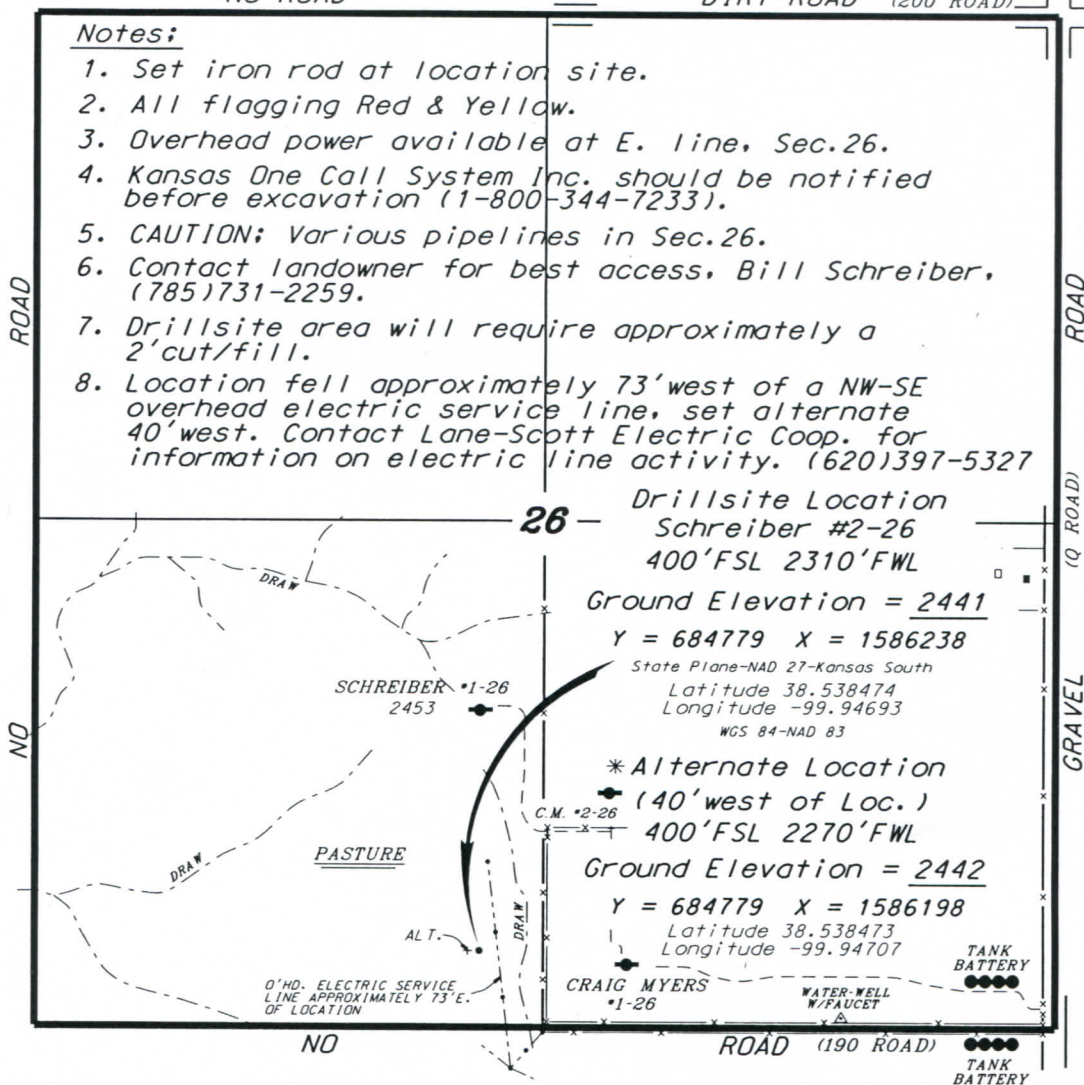
Directions:

From the intersection of Highway 283 and Highway 96 (in Ness City, Ks.) go 7.0 miles North on Highway 283, then go 2.0 miles West, then go 1.0 miles South to the SE. corner of Section 26, then go 0.56 miles West, then go 0.07 miles North to location.

NO ROAD ————— DIRT ROAD (200 ROAD)

Notes:

1. Set iron rod at location site.
2. All flagging Red & Yellow.
3. Overhead power available at E. line, Sec. 26.
4. Kansas One Call System Inc. should be notified before excavation (1-800-344-7233).
5. CAUTION; Various pipelines in Sec. 26.
6. Contact landowner for best access, Bill Schreiber, (785)731-2259.
7. Drillsite area will require approximately a 2' cut/fill.
8. Location fell approximately 73' west of a NW-SE overhead electric service line, set alternate 40' west. Contact Lane-Scott Electric Coop. for information on electric line activity. (620)397-5327



*Ingress and egress to location as shown on this plot is for usage only and may not be legally opened for public use. Contact landowner, tenant and county road department for access.



* Controlling data is based upon the best maps and photographs available to us and upon a regular section of land containing 640 acres.
 * Approximate section lines were determined using the normal standard of care of oilfield surveyors practicing in the state of Kansas. The section corners, which establish the precise section lines, were not necessarily located, and the exact location of the drillsite location in the section is not guaranteed. Therefore, the operator securing this service and accepting this plot and all other parties relying thereon agree to hold Central Kansas Oilfield Services, Inc., its officers and employees harmless from all losses, costs and expenses and said entities released from any liability from incidental or consequential damages.
 * Elevations derived from National Geodetic Vertical Datum.

Date May 31, 2017