

Wellsite Services, LLC

John Goldsmith
(316) 640-0236

427 Roosevelt St.
Cheney, KS 67025

Scale 1:240 (5"=100') Imperial Measured Depth Log

Well Name: #1 L-BO Land 3C
API: 15-171-21193
Location: 965' FSL & 1265' FWL, Sec 03-18S-33W, N/2 S/2 SW
License Number: REI #4767 Region: Scott County
Spud Date: 02/17/2017 Drilling Completed: 02/27/2017
Surface Coordinates: LAT: 38.5139495
LONG: -100.9578015
Bottom Hole Vertical Hole
Coordinates: 1 Degree Deviation
Ground Elevation (ft): 3001' K.B. Elevation (ft): 3006'
Logged Interval (ft): 3700' To: RTD Total Depth (ft): 4840'
Formation: Mississippian at RTD
Type of Drilling Fluid: Chemical

Printed by MUD.LOG from WellSight Systems 1-800-447-1534 www.WellSight.com

OPERATOR

Company: Ritchie Exploration Inc.
Address: 8100 E. 22nd St. N. #700
Wichita, KS 67226
(316) 691-9500

GEOLOGIST

Name: John Goldsmith
Company: Wellsite Services LLC
Address: 427 Roosevelt St.
Cheney, KS 67025
(316) 640-0236

RIG RECORDS

Contractor: WW Drilling Rig #10
Pusher: Ricky Hilgers

Collar Tally: 496'

Pump: Emsco D-300
Liner & Stroke: 6 x 14

BIT RECORDS

Size:	Type:	Footage:	Condition:	Hours:	Serial #:
12 1/4"	Sm-tooth	0-223'	RR	2	RH66052
7 7/8"	Sm-F27	223'-4840'	New	122.5	RJ0747

COMMENTS

Surface Casing: 6 joints of 8 5/8" set @ 223'
Production Casing: It was not recommended to run production casing.
Mud by: MudCo
DST's by: Trilobite Testing
Logs by: Pioneer Energy Services (DIL, CN-CD)
RTD=4840' LTD=4840'

FORMATION TOPS

FORMATION	SAMPLE TOPS		LOG TOPS	
	Depth	Datum	Depth	Datum
Heebner Shale	3950'	-944	3949'	-943
Toronto	3970'	-964	3969'	-963
Lansing	3992'	-986	3991'	-985
Muncie Creek Shale	4190'	-1184	4190'	-1184
Stark Shale	4291'	-1285	4292'	-1286
Hushpuckney Shale	4337'	-1331	4338'	-1332
Base of KC	4379'	-1373	4380'	-1374
Altamont	4440'	-1434	4440'	-1434
Pawnee	4518'	-1512	4518'	-1512
Ft Scott	4568'	-1562	4568'	-1562
Cherokee Shale	4594'	-1588	4593'	-1587
Johnson Zone	4638'	-1632	4638'	-1632
Morrow	4710'	-1704	4710'	-1704
Mississippian	4754'	-1748	4755'	-1749
RTD	4840'	-1834		
LTD			4840'	-1834

DST's




DST #1 "LKC-C" 4020'-4050' 2-21-17 30-45-30-45
 1st Blw: Blt to BOB in 2min (No BB)
 2nd Blw: Blt to BOB in 2min (No BB)
 IFP: 196-779# ISIP: 1013# FFP: 787-977# FSIP: 1015#
 Hyd: 1939-1882#
 Rec: 310' WCM (30%WTR), 310' MCW (90%WTR), 1488' WTR.

DST #2 "Altamont A/B" 4440'-4479' 2-23-17 30-45-45-60
 1st Blw: Blt to 2" (No BB)
 2nd Blw: Blt to wk surf blw (No BB)
 IFP: 23-78# ISIP: 1197# FFP: 81-105# FSIP: 1179#
 Hyd: 2198-2162#
 Rec: 150' Mud.

DST #3 "Altamont C" 4472'-4530' 2-24-17 30-45-45-60
 1st Blw: Blt to 4.5" (No BB)
 2nd Blw: Blt to 2" (No BB)
 IFP: 86-111# ISIP: 1215# FFP: 113-143# FSIP: 1196#
 Hyd: 2212-2195#
 Rec: 62' Mud, 62' MCW (50%WTR), 62' MCW (80%WTR).

DST #4 "Johnson" 4648'-4714' 2-25-17 30-45-30-30
 1st Blw: Blt to 1" (No BB)
 2nd Blw: No blw, flushed, No blw (No BB)
 IFP: 62-65# ISIP: 786# FFP: 68-77# FSIP: 431#
 Hyd: 2313-2299#
 Rec: 124' Mud w/ OS in tool.

ROCK TYPES

 Anhy
 Cht
 Congl

 Dol
 Lmst
 Shale

 Sltst
 Ss
 Carb sh





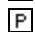

 Sandylms
 Shaly ls

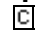
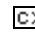
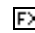
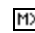
ACCESSORIES

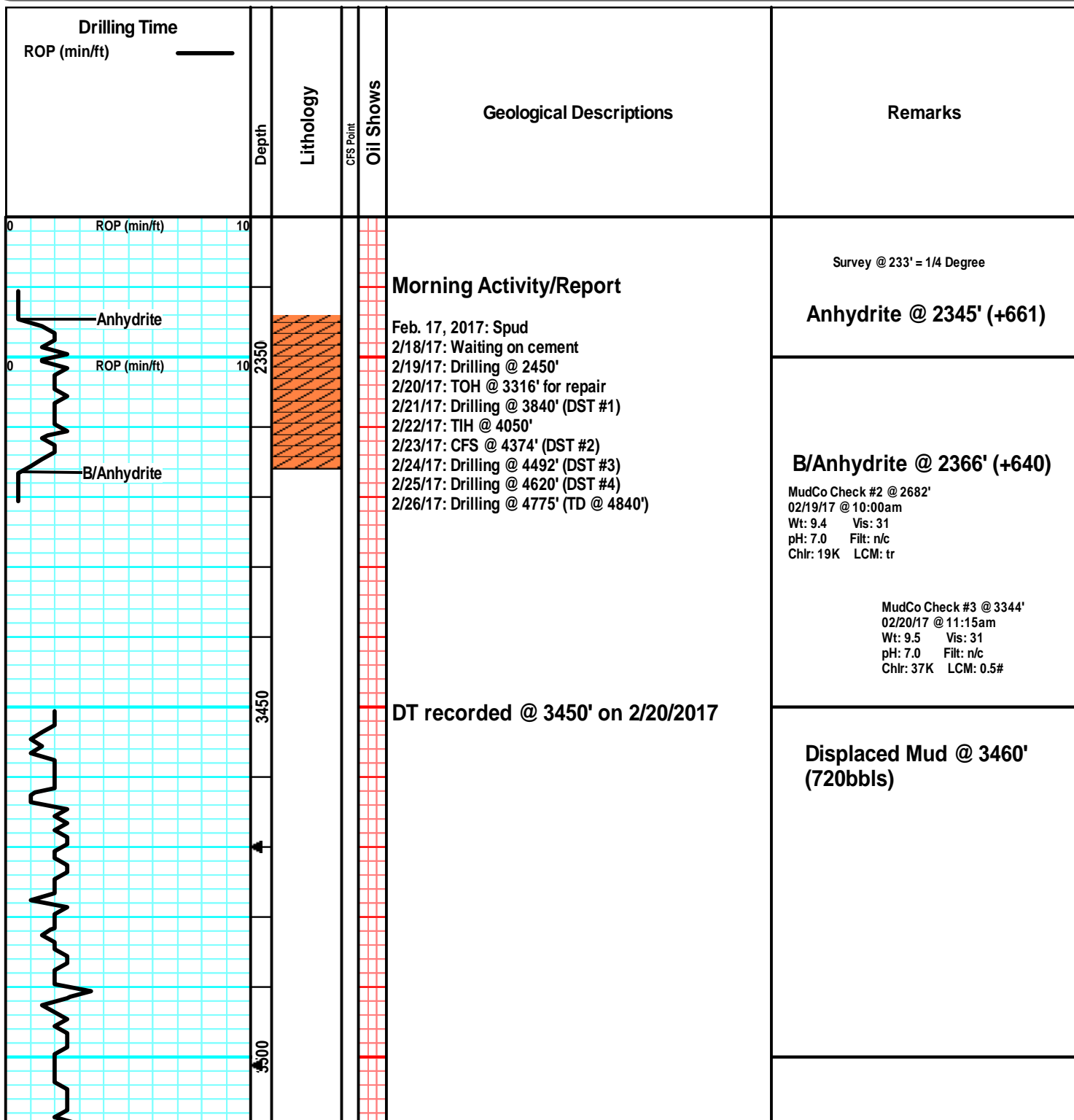
EVENTS
 Circ
 Conn

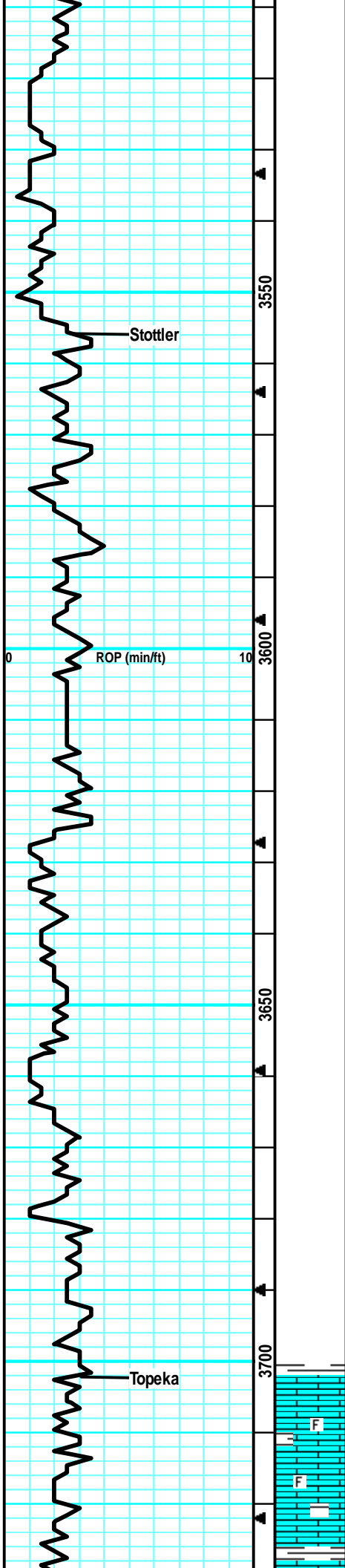
FOSSIL
 Brach
 Bryozoa
 Crin

 Foram
 Fossil
 Gastro
 Oolite
 Ostra
 Fuss
 Oolcast

MINERAL
 Calc
 Chtdk
 Chtlt
 Glau
 Pyr
 Sil

TEXTURE
 Chalky
 Crsxln
 Finexln
 Microxln



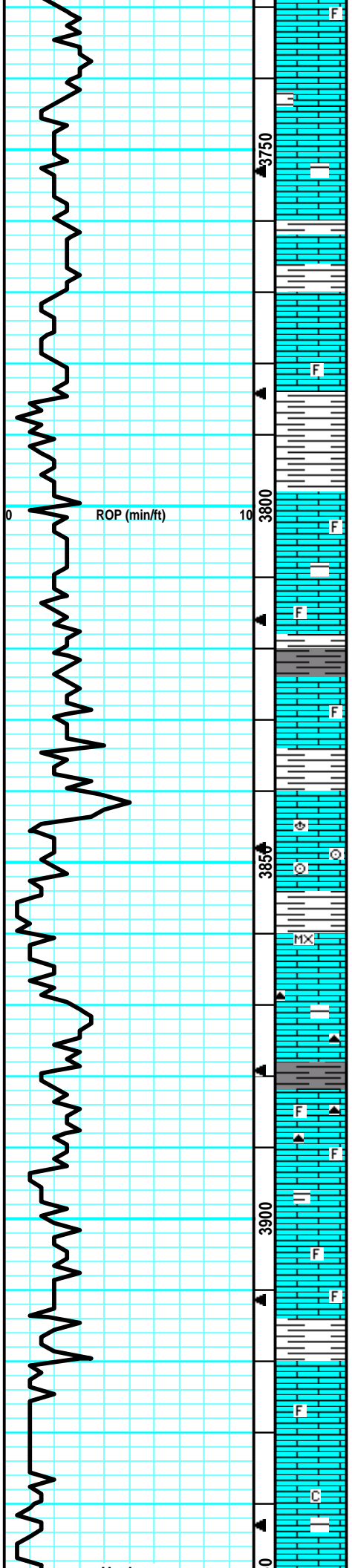


Samples caught @ 3700' on 2/20/2017

LS: drk gry/gry, fn xln, foss foss, dense, firm, tr-nvp, no odr, ns.

Much more dense, firm, LS, more foss, sm flakey/mealy, no odr, ns.

LS: crm/lt tan, fn xln, v fw foss, sub-chlky in prt, sm brittle, tr-nvp, no cup odr, ns.



LS: gry/lt brn, mott in prt, fn xln, sm flakey, tr-nvp, fw pcs w/ drk min stns, no fluor/cut, no odr.

LS: gry/lt gry, slight mott, fn xln, dense, firm, tr-nvp, no odr, ns.

LS: lt gry/tan, mott, fn xln, many foss, sm brittle, tr-nvp, svrl SH: gry/lt gry, silty, sm soft, fw blk/carb, no cup odr, ns.

LS: lt gry/lt tan, mott, fn xln, foss, many brittle, tr-nvp, much more SH: blk, silty, carb, no odr, ns.

LS: tan/lt gry, slight mott, fn xln, foss in prt, many brittle, sub-chlky, fw pcs w/ lght brn patchy stns, no-? fluor, no cut, nsfo, no odr.

LS: gry/tan, mott, fn xln, foss in prt, tr-nvp, sm drk brn min stns, no fluor/cut, nsfo, infix of SH: blk, silty, carb, no cup odr.

LS: tan/lt brn, mott, fn xln, sm v foss, brach/shell frags, sm SH: gry/brn, silty, no cup odr, ns.

LS: lt tan/crm/lt gry, micro-fn xln, foss/crin/frags, mostly brittle, sub-chlky in prt, tr-nvp, svrl SH: gry/brn, silty, no odr, ns.

LS: tan/lt tan, sing, fn xln, dense, sm brittle, chlky, tr-nvp, fw pcs pur chlky, fw Chert: gry, foss, sharp, no cup odr, ns.

LS: tan/lt tan, slight mott, fn xln, sm foss, sm dense, mostly brittle, many chlky, fw pcs pur chlky, fw Chert: gry, foss, sharp, no cup odr, ns.

SH: drk gry, silty, soft, fw blk, carb, soft.

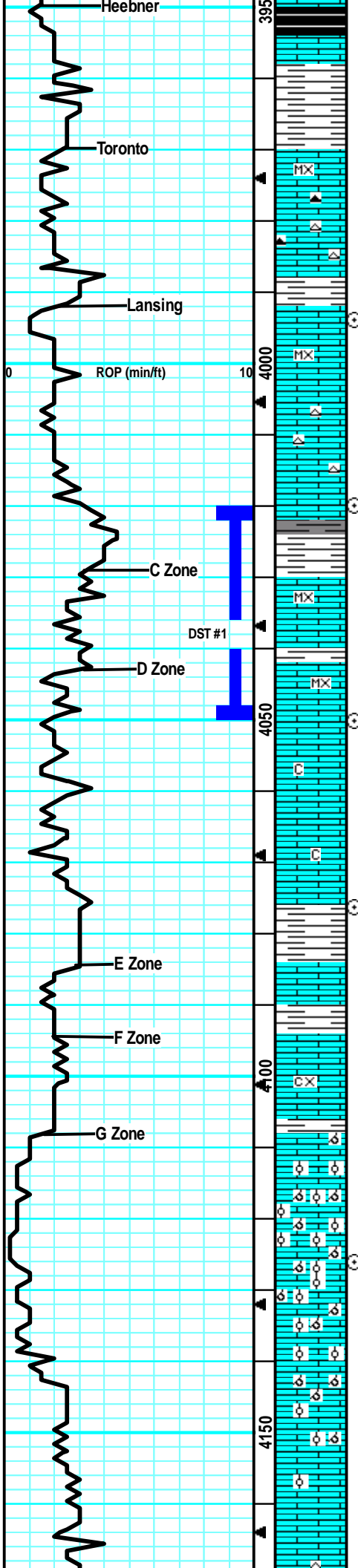
LS: lt tan, slight mott, fn xln, brittle, sm foss, chlky, tr-nvp, svrl pcs pur chlky, no odr, ns.

LS: tan/gry, mott, fn xln, many foss, sm brittle, tr-nvp, no odr, ns.

LS: tan/lt gry, mott, fn xln, many foss, many flakey/mealy, brittle, chlky, tr-nvp, sm drk min stns, no fluor/cut, no odr, ns.

LS: tan/gry, mott, fn xln, many brittle, tr-nvp, fw pcs w/ drk min stns, no fluor/cut, pos drk dead oil, no odr, ns.

MudCo Check #4 @ 3952'
 02/21/17 @ 10:20am
 Wt: 8.8 Vis: 59
 pH: 11.5 Filt: 7.2
 Chlr: 2.0K LCM: 2#



SH: blk, drk gry, silty, carb, sm soft.

LS: tan/lt brn, fn xln, mostly dense, sm firm, tr-nvp, fw w/ drk min stns, like above, fw SH: gry, silty, no odr, ns.

LS: lt tan, micro-fn xln, mostly dense, sm brittle, tr-nvp, 3-4 pcs w/ drk blk spttd stns on edge. wk-? fluor, no cut, nsfo, pos drk dead oil, abund pur chlk, fw Chert: gry/wht, foss, sharp, no odr.
30min: 2 more pcs w/ drk spttd stns on edges. Wk fluor, slw cut, hvy tarry oil sptts, mostly chlky, no cup odr.
60min: LS: mott, sm brittle, tr-nvp, lrg influx SH: gry, silty soft.

LS: tan/lt tan, sing, micro-fn xln, mostly dense, sm brittle, tr-nvp, no odr, ns.

LS: tan/gry, fn xln, many dense, sm brittle, tr-nvp, fw Chert: gry, foss, sharp, no odr, ns.

LS: tan/lt tan, fn xln, mostly dense, sm brittle, sub-chlky in prt, tr-nvp, fw Chert: wht/gry, foss, sharp, no odr, ns.

LS: gry/tan, fn xln, many dense, sm brittle, sub-chlky in prt, tr-nvp, abund SH: gry, silty, soft, no odr, ns.

LS: crm/lt tan, micro-fn xln, dense, brittle, sm isolated scat ppt por in few, drk brn stns, wk fluor, strm cut, vssfo, faint cup odr.

LS: gry/lt tan, micro-fn xln, mostly dense, pr intxln por in sm, fw scat vug, patchy lght brn stns, gd fluor/cut, 1 min gas bub on brk, fair cup odr, vssfo on brk.

SH: gry/brn/drk gry, silty, soft, sm fissile, fw LS: lt brn, fn xln, dense, tr-nvp, svrl pcs pur chlk, no odr, ns.

LS: lt gry/tan, fn xln, mostly dense, sm firm, tr-nvp, abund pur chlk, no cup odr, ns.

LS: tan/gry, sing, fn xln, dense, firm, tr-nvp, no odr, ns.

LS: tan/lt gry, fn xln, mostly dense, sm firm, sub-clky, in prt, tr-nvp, no odr, ns.

LS: gry/tan, slight mott, fn xln, many dense, firm, fw flakey, tr-nvp, no odr, ns.

LS: gry/tan, slight mott, fn-crs xln, many firm, many flakey/mealy, tr-pr intxln por in fw, no odr, ns.

LS: tan/lt brn/gry, fn xln, sm profus ool, many brittle, oolcast por in most, svrl pcs pur chlk, no odr, ns.

LS: gry/lt brn, mott, fn xln, profus ool, many brittle, oolcast por in most, fw pcs chlk, no odr, ns.

Much of the same ool/oolcast LS, lrg influx of chlky, no odr, ns.

LS: gry/lt brn, mott, fn xln, sm profus ool, many firm, sm flakey, tr-nvp, no odr, ns.

LS: lt gry/lt tan, mostly dense, sm brittle, sub-chlky in prt, tr-nvp, no odr, ns.

Heebner @ 3950' (-944)

Toronto @ 3970' (-964)

CFS @ 3994'
(30"/60")

Lansing @ 3992' (-986)

CFS @ 4020'
(30"/60")

Strap was .88' long to the board.

Survey @ 4050' = 1 Degree

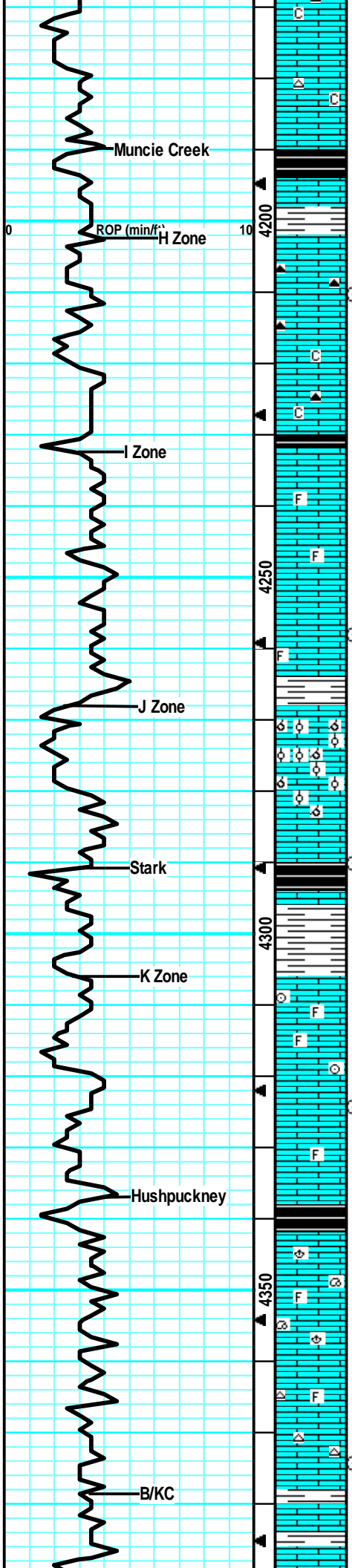
CFS @ 4050'
(30"/60")

DST #1 "LKC-C" 4020'-4050' 2-21-17
30-45-30-45
1st Blw: Blt to BOB in 2min (No BB)
2nd Blw: Blt to BOB in 2min (No BB)
IFP: 196-779# ISIP: 1013# FFP: 787-977# FSIP: 1015#
Hyd: 1939-1882#
Rec: 310' WCM (30%WTR), 310' MCW (90%WTR), 1488' WTR.

CFS @ 4076'
(30"/60")

MudCo Check #5 @ 4106'
02/22/17 @ 11:45am
Wt: 9.0 Vis: 50
pH: 11.0 Filt: 7.2
Chr: 4.0K LCM: 2#

CFS @ 4126'
(30"/60")



Lrg influx of SH: gry/brn, silty, soft, no much LS @ all.

Muncie Creek @ 4190' (-1184)

SH: gry/blk/brn, silty, soft, sm carb, no odr, ns.

LS: tan/gry, mott, fn xln, many dense, sm flakey, tr-nvp, sm Chert: gry, foss, sharp, fw SH: gry/brn, no odr, ns.

CFS @ 4210'
(30"/60")

LS: gry/tan, slght mott, fn xln, flakey/mealy, many firm, tr-nvp, no cup odr, ns.

LS: tan/lt gry, fn xln, mostly dense, mostly firm, fw flakey, tr-nvp, fw pcs pur chlk, no odr, ns.

LS: gry/tan, slght mott, fn xln, mostly dense, many firm, many flakey/mealy, tr-nvp, fw SH: drk gry/blk, silty, sm carb, no odr, ns.

LS: gry/lt brn, mott, fn xln, sm foss, firm, many flakey/mealy, tr-nvp, fw pcs w/ drk min stns, no fluor/cut, no sfo, no odr.

CFS @ 4258'
(30"/60")

LS: gry/tan, slght mott, fn xln, mostly dense, many firm, tr-nvp, 2 pcs w/ lght brn patchy stns, wk-? fluor, no cut, nsfo, no cup odr.

LS: tan/gry, mott in prt, fn xln, foss in prt, many dense, mostly firm, flakey/mealy, tr-nvp, fw SH: lt gry, silty, soft, no odr, ns.

LS: lt tan/lt gry, fn xln, fw foss, sm profus ool, mostly brittle, chlky in prt, sm fr oolcast por, fw Chert: wht/gry, foss, sharp, no odr, ns.

CFS @ 4290'
(30"/60")

LS: gry/tan, slght mott, fn xln, sm dense, flakey/mealy, tr-nvp, no cup odr, ns.

LS: gry/tan, slght mott, fn xln, many firm, mostly flakey/mealy, tr-nvp, fw SH: blk, carb, no odr, ns.

Stark @ 4291' (-1285)

LS: gry/lt tan, slght mott, fn xln, fw foss, flakey in prt, tr-nvp, sm SH: gry/blk, silty, fw carb, no show, faint pos cup odr.

LS: lt gry/lt tan, fn xln, fw foss frags/crin, sub chlk, sm brittle, tr-nvp, ns, faint pos cup odr.

CFS @ 4324'
(30"/60")

LS: lt gry/lt tan, fn xln, fw foss frags, mostly brittle, sub-chlky, tr-nvp, faint pos cup odr, ns.

LS: tan/lt gry, most sing, fn xln, fw foss frags, many dense, brittle, sub-chlky in prt, fw Chert: wht/opaque, foss, sharp, tr-nvp, no odr, ns.

Hushpuckney @ 4337' (-1331)

SH: blk, carb, silty, soft.

LS: gry/tan, mott, fn xln, sm v foss brach/gast/frags, many ool, mostly flakey/mealy, tr-ppt intxln por in fw, no odr, ns.

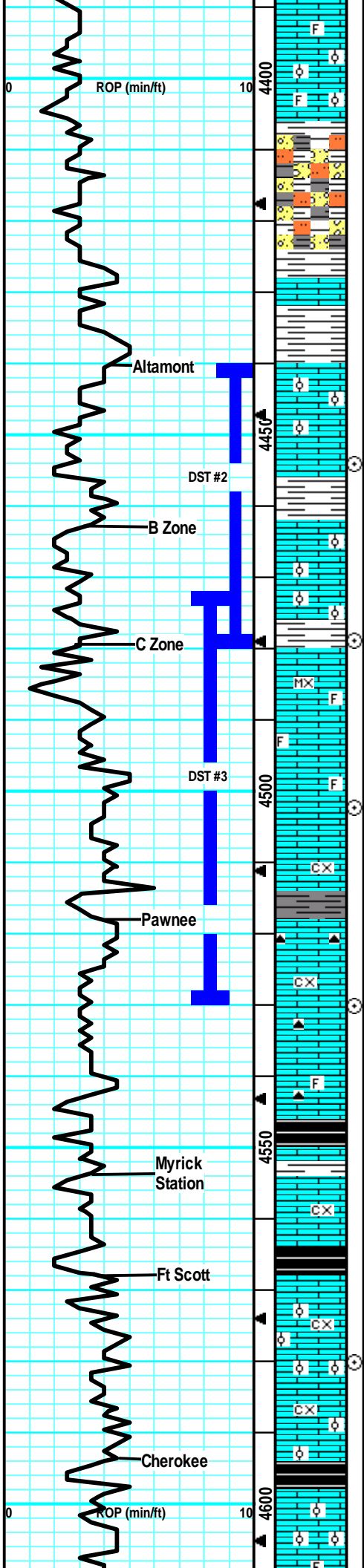
LS: lt gry/tan, slght mott, fn xln, fw foss, mostly flakey/mealy, sub-chlk, sm brittle, tr-nvp, no odr, ns.

CFS @ 4374'
(30"/60")

Much more of the same. More pcs pur chlk, fw Chert: gry, foss, sharp, no odr, ns.

LS: gry/tan, slght mott, fn xln, fw foss frags, many dense, firm, flakey, tr-nvp, fw Chert: gry/wht, foss, sharp, no cup odr, ns.

Base of KC @ 4379' (-1373)



LS: lt gry/tan, fn xln, v fw foss frags, many dense, mostly brittle, sub-chlky in prt, tr-nvp, fw pcs pur chl, no odr, ns.

LS: tan/gry, mott in prt, fn xln, foss/ool, many brittle, flakey/mealy in prt, tr-nvp, no odr, ns.

SH: gry/brn/grn, silty, sm soft, fw med crush, sm SltStn: lt gry, gritty, friable, svrl LS: flakey/mealy, tr-nvp, no odr, ns.

LS: gry/lt brn, mott, fn-crs xln, firm, flakey/mealy, tr-nvp, SltStn: lt gry, gritty, friable, fw SH: gry/brn, no odr, ns.

LS: gry/tan, slight mott, fn xln, mostly dense, many firm, sm flakey/mealy, tr-nvp, no odr, ns.

LS: tan/lt gry, slight mott, fn xln, fw ool/foss frags, sm sandy/grainy, tr-nvp, no odr, ns.

LS: tan/gry, slight mott, fn xln, fw ool, many flakey/mealy, tr-nvp, no cup odr, ns.

LS: tan/lt gry, fn xln, flakey/mealy, sub-chlky, tr-nvp, fw SH: gry/brn, silty, no odr, ns.

LS: gry/lt tan, slight mott, fn xln, many flakey, sub-chlky, tr-nvp, svrl SH: gry/drk brn, silty, no odr, ns.

LS: gry/lt tan, fn xln, fw ool, many dense, tr-nvp, fw SH: gry/brn, no odr, 1 pcs w/ pr intool por, lght brn stns, fo on brk, sml gas bubs.

LS: crm/lt tan, sing, micro-fn xln, fw foss, brittle, sub-chlky, tr-nvp, 2 pcs w/ lght brn stns in tght infoss por, vssfo on brk, faint cup odr.

tan/lght gry, fn xln, mostly dense, firm, tr-nvp, fw SH: drk gry, silty, no odr, ns.

LS: gry/lt brn, mott, fn xln, sm grainy like, flakey/mealy, firm, tr-nvp, fw SH: gry, silty, no odr, ns.

LS: gry/lt brn, mott, fn-crs xln, sandy/grainy, tr-nvp, fw Chert: gry, sharp, abun SH: gry/brn, silty, no odr, ns.

More, mott, dense, firm LS, lrg influx SH: gry/brn, no odr, ns.

LS: lt tan/lt gry, sing, fn xln, mostly dense, sm brittle, sub-chlky, fw flakey, tr-nvp, no odr, ns.

LS: gry/lt tan, slight mott, fn xln, foss in prt, gritty/grainy, sub-chlky, tr-nvp, fw Chert: gry, foss, sharp, no odr, ns.

SH: blk, silty, carb.

LS: gry/tan, mott, fn-crs xln, flakey/mealy, frim, tr-nvp, no odr, ns.

SH: blk, silty, carb.

LS: gry/tan, mott, fn-crs xln, many ool, sm flakey/melay, brittle in prt, fw Chert: gry, foss, sharp, tr-nvp, no odr, ns.

LS: gry/tan, mott, fn-crs xln, sm ool, sm flakey, sm brittle, fw sub-chlky, tr-nvp, fw Chert: gry, foss, sharp, no odr, ns.

LS: gry/tan, mott, fn-crs xln, mostly flakey/mealy, sm firm, tr-nvp, abun SH: blk, silty, carb, no odr, ns.

LS: tan/lt gry, slight mott, fn xln, many ool, mostly firm, tr-nvp, fw SH: drk gry/blk, silty, no cup odr, ns.

MudCo Check #6 @ 4447'
02/23/17 @ 11:30am
Wt: 9.1 Vis: 61
pH: 11.5 Filt: 6.8
Chlr: 4.1K LCM: 2#

Altamont @ 4440' (-1434)

**CFS @ 4454'
(30"/60")**

DST #2 "Altamont A/B" 4440'-4479' 2-23-17
30-45-45-60
1st Blw: Blt to 2" (No BB)
2nd Blw: Blt to wk surf blw (No BB)
IFP: 23-78# ISIP: 1197# FFP: 81-105# FSIP:
1179#
Hyd: 2198-2162#
Rec: 150' Mud.

**CFS @ 4479'
(30"/60")**

DST #3 "Altamont C" 4472'-4530' 2-24-17
30-45-45-60
1st Blw: Blt to 4.5" (No BB)
2nd Blw: Blt to 2" (No BB)
IFP: 86-111# ISIP: 1215# FFP: 113-143#
FSIP: 1196#
Hyd: 2212-2195#
Rec: 62' Mud, 62' MCW (50%WTR), 62' MCW
(80%WTR).

**CFS @ 4502'
(30"/60")**

Pawnee @ 4518' (-1512)

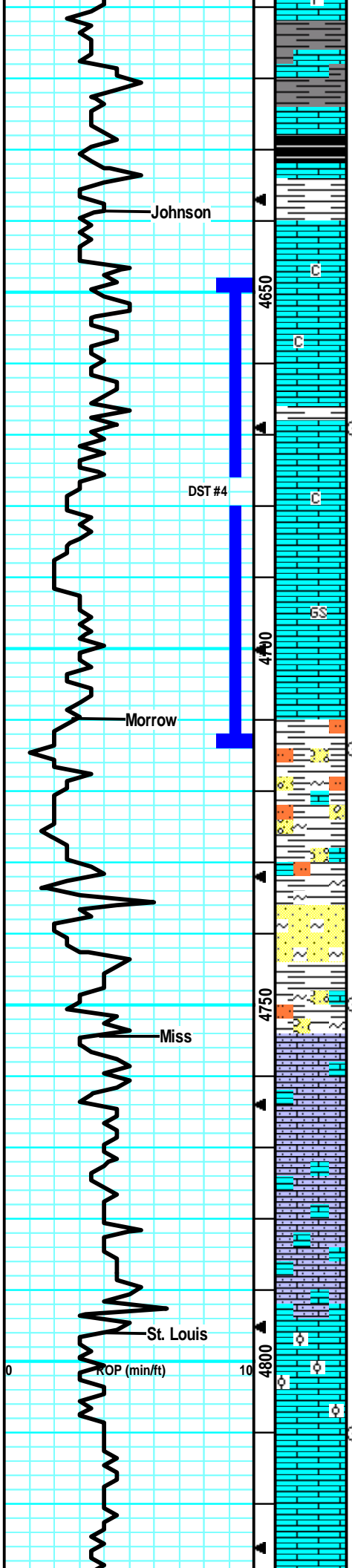
MudCo Check #7 @ 4530'
02/24/17 @ 10:30am
Wt: 9.0 Vis: 50
pH: 10.5 Filt: 8.0
Chlr: 3.0K LCM: 1#

**CFS @ 4530'
(30"/60")**

Ft Scott @ 4568' (-1562)

**CFS @ 4580'
(30"/60")**

Cherokee @ 4594' (-1588)



LS: gry/tan, mott, fn xln, fw foss/ool, many flakey/mealy, sm sub-chlky in prt, fw brittle, tr-nvp, svrl SH: drk gry/blk, silt, fw carb, no odr, ns.

LS: gry/tan, mott, fn xln, foss/ool in prt, many firm, fw sub-chlky, tr-nvp, fw Chert: gry/brn, foss, sharp, svrl SH: drk gry/blk, silty, carb, no odr, ns.

LS: tan/lt gry, mott, fn xln, fw foss, mostly flakey, firm, tr-nvp, no odr, ns.

LS: gry/tan, fn xln, dense, firm, fw flakey/mealy, tr-nvp, fw SH: drk gry/brn, silty, no odr, ns.

LS: gry/tan, fn xln, mostly dense, firm, tr-nvp, fw pcs sli chlky, no odr, ns.

LS: lt brn/gry, fn xln, mostly dense, firm, fw sub-chlky, tr-nvp, no cup odr, ns.

LS: gry/lt tan, fn xln, dense, firm, fw flakey, sub-chlky in prt, tr-nvp, no odr, ns.

LS: lt tan/lt gry, fn xln, dense, sm brittle, sub-chlky in prt, tr-nvp, no odr, ns.

LS: tan/lt gry, mott, fn fn xln, fw sandy/grainy, mostly dense, firm, tr-nvp, no odr, ns.

LS: lt brn/lt gry, slight mott, fn xln, mostly dense, firm, tr-nvp, 2 pcs sub-chlky, brittle, spttd lght brn stns, wk fluor, ssfo on brk, no cup odr.

LS: gry/grn-blu, silty, soft, fw fissile, no odr, ns.

SH: gry/drk gry/blu-grn, silty, soft, fw fissile, fw SltStn: lt gry/lt brn, gritty, v soft, friable, sm muddy like, no odr, ns.

SH: gry/drk gry, grn, silty, soft, fw SS: grn/blu, fn grn, sub-rnd, arg, friable, brittle, well sortd, glauc, tr-nvp, no odr, ns.

SS: lt gry/blu-grn, fn grn, sub-ang, friabl, arg, glauc, tr-? intgrn por in sm, well sorted down, SH: gry/drk gry/blu-grn, silty, soft, no odr, ns.

LS: crm/lt tan, fn xln, sandy/gritty, sm friable, dense, fw sub-chlky, fw SH: gry, silty, no odr, ns.

LS: crm/lt tan, sandy/gritty, firm, sm sub-chlky in prt, tr-nvp, no odr, ns.

Much of the same sandy/gritty LS, sub-chlky mtrx in more pcs, no odr, ns.

Mostly the same sandy/gritty LS, sml influx of tan, slightly flakey, dense LS, no odr, ns.

LS: svrl sandy/gritty, fw sub-chlky, tr-nvp, many tan, dense, frim, no cup odr, ns.

LS: tan, fn xln, fw ool, mostly dense, firm, tr-nvp, no cup odr, ns.

LS: lt tan/lt gry, sm sandy/gritty, svrl flakey, firm, tr-nvp, no odr, ns.

LS: much like above, lrg influx of SH: gry/grn, silty, soft, may be slough from above.

Johnson @ 4638' (-1632)

MudCo Check #8 @ 4670'
02/25/17 @ 11:45am
Wt: 8.9 Vis: 58
pH: 11.0 Fil: 7.2
Chr: 3.0K LCM: 2#

**CFS @ 4669'
(30"/60")**

DST #4 "Johnson" 4648'-4714' 2-25-17
30-45-30-30
1st Blw: Blt to 1" (No BB)
2nd Blw: No blw, flushed, No blw (No BB)
IFP: 62-65# ISIP: 786# FFP: 68-77# FSIP:
431#
Hyd: 2313-2299#
Rec: 124' Mud w/ OS in tool.

Morrow @ 4710' (-1704)

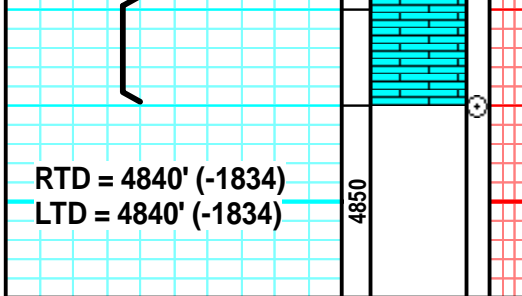
**CFS @ 4714'
(30"/60")**

**CFS @ 4750'
(30"/60")**

Miss @ 4754' (-1748)

**CFS @ 4810'
(30"/60")**

MudCo Check #9 @ 4840'
02/26/17 @ 12:15am
Wt: 9.3 Vis: 55



LS: lt tan/lt gry, sm sandy/gritty, many flakey,
firm/hard, tr-nvp, abund SH: gry/grn, silty, soft, most
likely slough.

pH: 10.5 Filt: 8.0
Chlr: 3.5K LCM: 2#

CFS @ 4840'
(30"/60")

Survey @ 4840' = 1 Degree