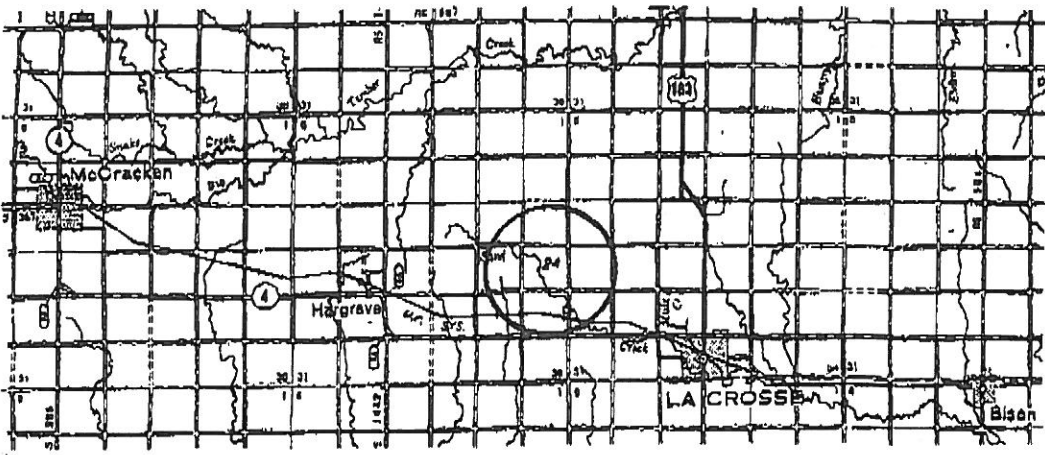
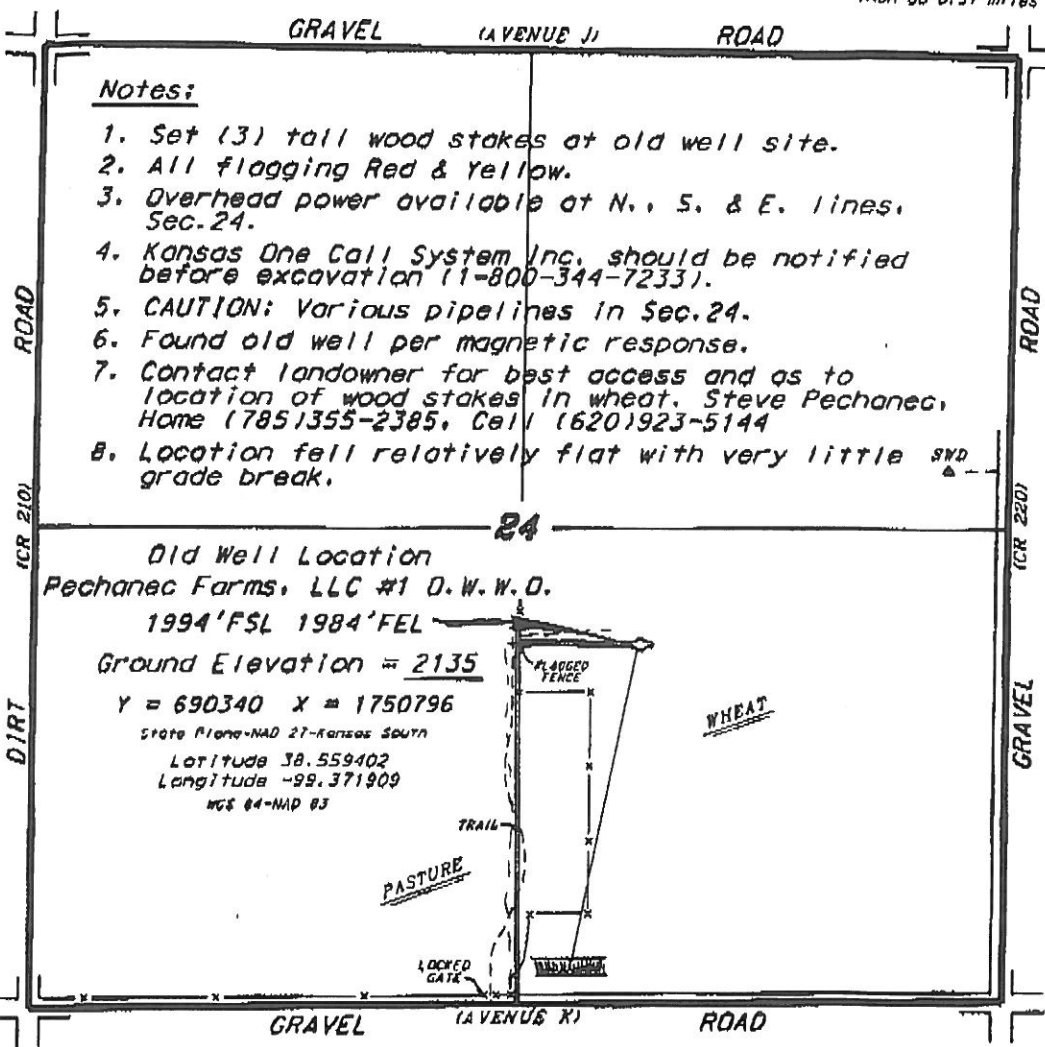


L.D. DRILLING, INC.
PECHANEC FARMS, LLC LEASE
SE. 1/4, SECTION 24, T17S, R19W
RUSH COUNTY, KANSAS

Directions:

From the intersection of Highway 183 and Highway 4 in LaCrosse, Kansas, go 3.0 miles West on Highway 4, then go 1.0 miles North to the SE. corner of Section 24, then go 0.37 miles West, then go 0.37 miles North to location.

Start June 16 to June 19



* Controlling data is based upon the best maps and photographs available to us and upon a regular section of land containing 640 acres.
 * Approximate section lines were determined using the normal standards of care of oilfield surveyors practicing in the state of Kansas. The section corners, which establish the precise section lines, were not necessarily located and the actual location of the gridline location in the section is not guaranteed. Therefore, the user assumes the responsibility for securing this service and all other parties relying thereon agree to hold Central Kansas Oilfield Services, Inc., its officers and employees harmless from all losses, costs and expenses and said entities released from any liability that is incidental or consequential damages.
 * Elevations derived from national Geodetic Vertical Datum.

Date May 31, 2017

* Ingress and egress to location as shown on this plot is per seep only and may not be legally cleared for public use. Contact landowner, tenant and county road department for access.