



**TRILOBITE TESTING, INC**

# DRILL STEM TEST REPORT

Berexco LLC  
 2020 N. Bramblewood  
 Wichita, Kansas 67206+1094  
 ATTN: Clint Bleier

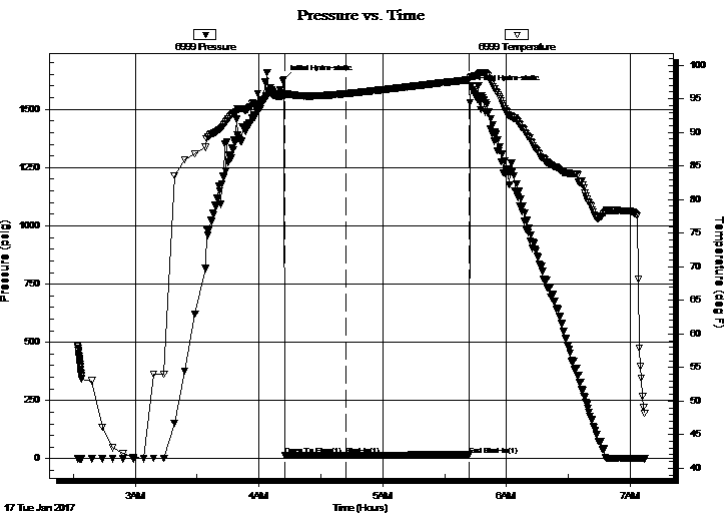
**25/20S/9W/Rice**  
**Tobias #21**  
 Job Ticket: 63696 **DST#: 1**  
 Test Start: 2017.01.17 @ 02:32:00

## GENERAL INFORMATION:

Formation: **Arbuckle**  
 Deviated: No Whipstock: ft (KB)  
 Time Tool Opened: 04:12:30  
 Time Test Ended: 07:07:00  
 Interval: **3196.00 ft (KB) To 3205.00 ft (KB) (TVD)**  
 Total Depth: 3205.00 ft (KB) (TVD)  
 Hole Diameter: 7.80 inches Hole Condition: Fair  
 Test Type: Conventional Bottom Hole (Initial)  
 Tester: Ken Swinney  
 Unit No: 72 Great Bend/62  
 Reference Elevations: 1683.00 ft (KB)  
 1676.00 ft (CF)  
 KB to GR/CF: 7.00 ft

**Serial #: 6999 Inside**  
 Press@RunDepth: 15.89 psig @ 3201.00 ft (KB) Capacity: 8000.00 psig  
 Start Date: 2017.01.17 End Date: 2017.01.17 Last Calib.: 2017.01.17  
 Start Time: 02:32:05 End Time: 07:06:59 Time On Btm: 2017.01.17 @ 04:12:00  
 Time Off Btm: 2017.01.17 @ 05:43:30

TEST COMMENT: I.F. 30 Minutes/Surge at open 30 second surface blow then dead  
 I.S.I. 60 Minutes/No blow back  
 Pull test



## PRESSURE SUMMARY

Time (Min.)	Pressure (psig)	Temp (deg F)	Annotation
0	1627.66	95.43	Initial Hydro-static
1	14.29	95.46	Open To Flow (1)
30	15.89	95.75	Shut-In(1)
90	16.97	97.83	End Shut-In(1)
92	1585.56	98.32	Final Hydro-static

## Recovery

Length (ft)	Description	Volume (bbl)
1.00	Mud in tool/ Mud 100%	0.01

## Gas Rates

Choke (inches)	Pressure (psig)	Gas Rate (Mcf/d)



**TRILOBITE TESTING, INC**

# DRILL STEM TEST REPORT

Berexco LLC  
 2020 N. Bramblewood  
 Wichita, Kansas 67206+1094  
 ATTN: Clint Bleier

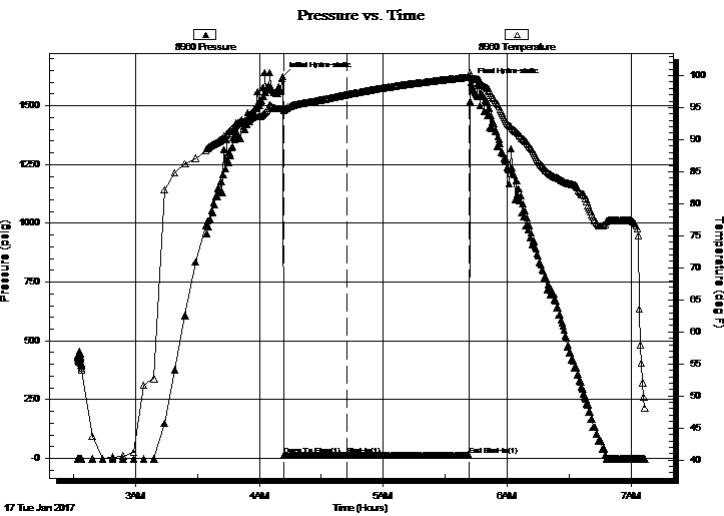
**25/20S/9W/Rice**  
**Tobias #21**  
 Job Ticket: 63696 **DST#: 1**  
 Test Start: 2017.01.17 @ 02:32:00

## GENERAL INFORMATION:

Formation: **Arbuckle**  
 Deviated: No Whipstock: ft (KB)  
 Time Tool Opened: 04:12:30  
 Time Test Ended: 07:07:00  
 Interval: **3196.00 ft (KB) To 3205.00 ft (KB) (TVD)**  
 Total Depth: 3205.00 ft (KB) (TVD)  
 Hole Diameter: 7.80 inches Hole Condition: Fair  
 Test Type: Conventional Bottom Hole (Initial)  
 Tester: Ken Swinney  
 Unit No: 72 Great Bend/62  
 Reference Elevations: 1683.00 ft (KB)  
 1676.00 ft (CF)  
 KB to GR/CF: 7.00 ft

**Serial #: 8960 Outside**  
 Press@RunDepth: 14.53 psig @ 3202.00 ft (KB) Capacity: 8000.00 psig  
 Start Date: 2017.01.17 End Date: 2017.01.17 Last Calib.: 2017.01.17  
 Start Time: 02:32:05 End Time: 07:06:29 Time On Btm: 2017.01.17 @ 04:11:30  
 Time Off Btm: 2017.01.17 @ 05:42:30

TEST COMMENT: I.F. 30 Minutes/Surge at open 30 second surface blow then dead  
 I.S.I. 60 Minutes/No blow back  
 Pull test



## PRESSURE SUMMARY

Time (Min.)	Pressure (psig)	Temp (deg F)	Annotation
0	1622.99	94.90	Initial Hydro-static
1	11.85	94.53	Open To Flow (1)
31	11.81	97.04	Shut-In(1)
90	14.53	99.74	End Shut-In(1)
91	1599.35	99.91	Final Hydro-static

## Recovery

Length (ft)	Description	Volume (bbl)
1.00	Mud in tool/ Mud 100%	0.01

## Gas Rates

Choke (inches)	Pressure (psig)	Gas Rate (Mcf/d)

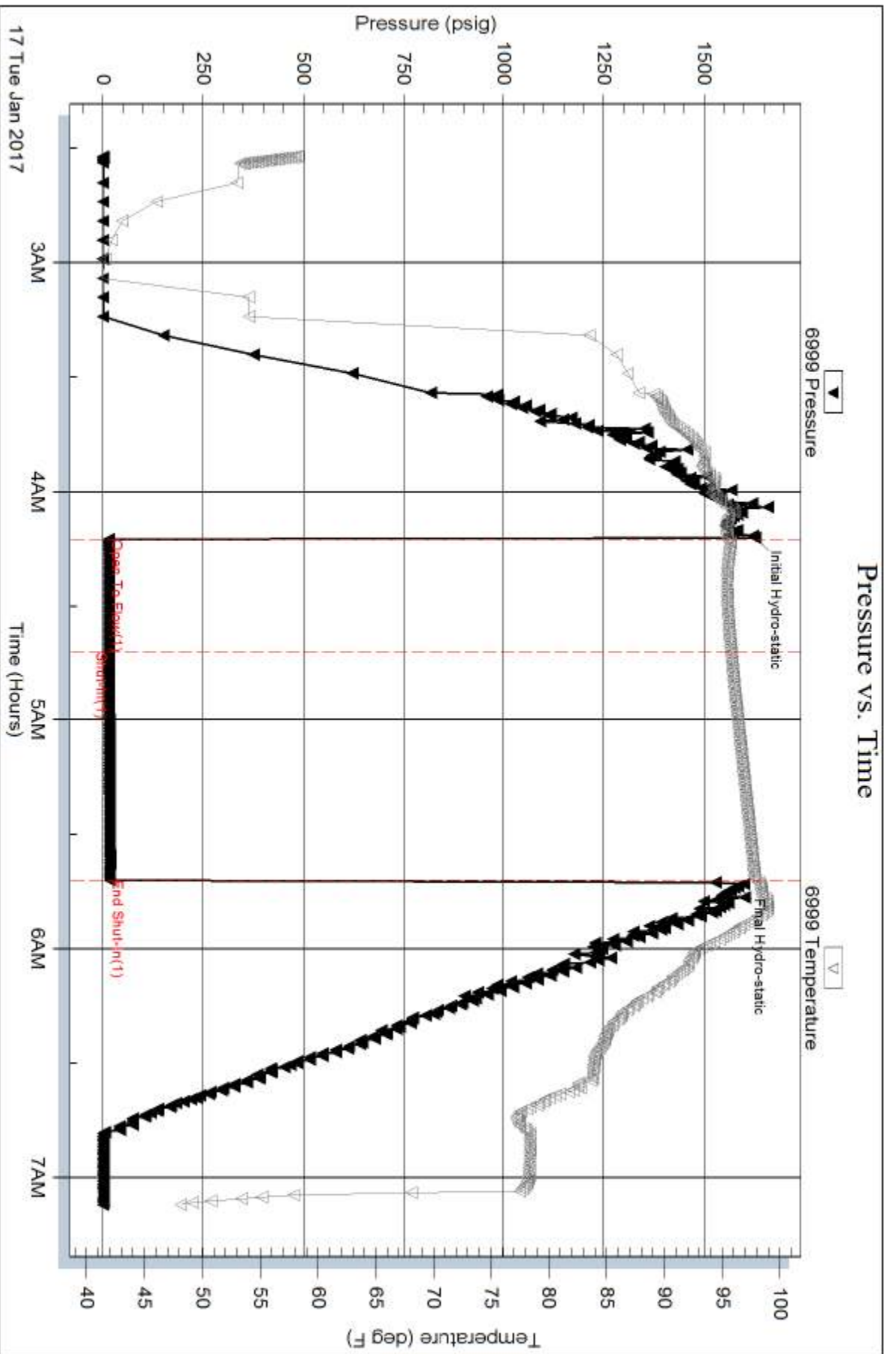
Serial #: 6999

Inside

Berexco LLC

Tobias #21

DST Test Number: 1



Trilobite Testing, Inc

Ref. No: 63696

Printed: 2017.01.17 @ 07:24:55

