

GEOLOGIST'S REPORT

DRILLING TIME AND SAMPLE LOG

SUEMAUR EXPLORATION & PROD., LLC

LUCKY SEVENS LLC #1-20
SEC. 20 TWP 6S RGE 28W
SW SE NE NW
993' FNL & 1989' FWL
SHERIDAN COUNTY, KANSAS
API: 15-179-21436-00-00

ELEVATION
KB: 2754'
GL: 2749'
LOG MEASURED FROM: KB

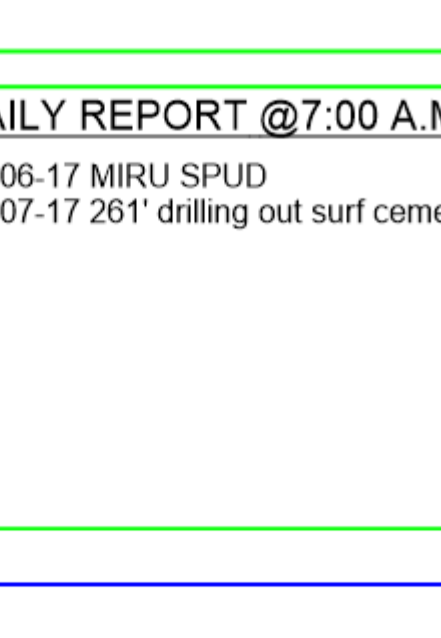
SURFACE CASING
 8" Set @261' w/240SX
PRODUCTION CASING

DRILLING CONTR.: MURFIN RIG #7
SPUD: 06-05-2017 COMP:06-xx-2017
MUD UP: 3300' TYPE MUD: CHEM.
DRILL TIME: 3300' to RTD
RTD: xxxx' LTD:XXXX'
SAMPLES SAVED: 3350 to RTD
GEOLOGIST: ROBERT J. PETERSEN

WELL LOG SURVEYS
 WEATHERFORD
 HI-Res AIL-DNL-ML-GR-SP

ELECTRIC LOG TOPS

LOCATION MAP



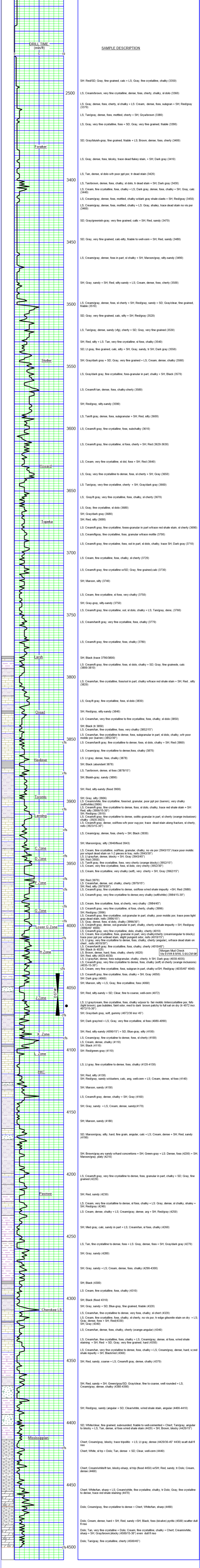
REFERENCE WELL A
 Petroleum Management Inc
 15-179-20121
 Geisinger #1
 Sec. 16-6-28W

REFERENCE WELL B
 Suemaur Expl. & Prod., LLC
 15-179-21426-00-00
 SCHIEFERECKE TRUST #1-7
 515' FSL & 1850' FEL
 Sec. 7-6-28W

DAILY REPORT @7:00 A.M.

06-06-17 MIRU SPUD
 06-07-17 261' drilling out surf cement

REMARKS AND RECOMMENDATIONS



SAMPLE DESCRIPTION

SH Red/SD, Gray, fine grained, calc + LS; Gray, fine crystalline, chalky (3350)

LS, Cream/brown, very fine crystalline, dense, foss, cherty, chalky, sl dolo (3360)

LS, Gray, dense, foss, cherty, sl chalky + LS; Cream, dense, foss, subgran + SH; Red/gray (3370)

LS, Tan/gray, dense, foss, mottled, cherty + SH; Gray/brown (3380)

LS, Gray, very fine crystalline, foss + SD; Gray, very fine grained, friable (3390)

SD, Gray/bluish-gray, fine grained, friable + LS; Brown, dense, foss, cherty (3400)

LS, Gray, dense, foss, blocky, trace dead flakey stain, + SH; Dark gray (3410)

LS, Tan, dense, sl dolo w/ir poor ppt por, tr dead stain (3420)

LS, Tan/brown, dense, foss, chalky, sl dolo, tr dead stain + SH; Dark gray (3430)

LS, Cream, fine crystalline, foss, chalky + LS; Dark gray, dense, foss, chalky + SH; Gray, calc (3440)

LS, Cream/gray, dense, foss, mottled, chalky w/dark gray shale clasts + SH; Red/gray (3450)

LS, Cream/gray, dense, foss, mottled, chalky + LS; Gray, shaley, trace dead stain no vis por (3460)

SD, Gray/greenish-gray, very fine grained, calc + SH; Red, sandy (3470)

SD, Gray, very fine grained, calc-silty, friable to well-cem + SH; Red, sandy (3480)

LS, Cream/gray, dense, foss in part, sl chalky + SH; Maroon/gray, silty-sandy (3490)

SH, Gray, sandy + SH; Red, silty-sandy + LS; Cream, dense, foss, cherty (3500)

LS, Cream/gray, dense, foss, sl cherty + SH; Red/gray, sandy + SD; Gray/clear, fine grained, friable (3510)

SD, Gray, very fine grained, calc, silty + SH; Red/gray (3520)

LS, Tan/gray, dense, sandy (vf), cherty + SD; Gray, very fine grained (3530)

SH, Red, silty + LS; Tan, very fine crystalline, sl foss, chalky (3540)

SD, Lt gray, fine grained, calc, silty + SH; Gray, sandy, tr SH; Dark gray (3550)

SH, Gray/dark gray + SD; Gray, very fine grained + LS; Cream, dense, chalky (3560)

LS, Gray/dark gray, fine crystalline, foss-granular in part, chalky + SH; Black (3570)

LS, Cream/lt tan, dense, foss, chalky-cherty (3580)

SH, Red/gray, silty-sandy (3590)

LS, Tan/lt gray, dense, foss, subgranular + SH; Red, silty (3600)

LS, Cream/lt gray, fine crystalline, foss, subchalky (3610)

LS, Cream/lt gray, fine crystalline, sl foss, cherty + SH; Red (3620-3630)

LS, Cream, very fine crystalline, sl dol, foss + SH; Red (3640)

LS, Gray, very fine crystalline to dense, foss, sl cherty + SH; Gray (3650)

LS, Tan/gray, very fine crystalline, cherty + SH; Gray/dark gray (3660)

LS, Gray/lt gray, very fine crystalline, foss, chalky, sl cherty (3670)

LS, Gray, fine crystalline, sl dolo (3680)

SH, Gray/dark gray (3680)

SH, Red, silty (3690)

LS, Cream/lt gray, fine crystalline, foss, granular in part w/trace red shale stain, sl cherty (3690)

LS, Cream/lt gray, fine crystalline, foss, granular w/trace mottle (3700)

LS, Cream/lt gray, fine crystalline, foss, ool in part, sl dolo, chalky, trace SH; Dark gray (3710)

LS, Cream, fine crystalline, foss, chalky, sl cherty (3720)

LS, Cream/lt gray, fine crystalline w/SD, Gray, fine grained, calc (3730)

SH, Maroon, silty (3740)

LS, Cream, fine crystalline, sl foss, very chalky (3750)

SH, Gray-gray, silty-sandy (3750)

LS, Cream/lt gray, fine crystalline, ool, sl dolo, chalky + LS; Tan/gray, dense, (3760)

LS, Cream/tan/lt gray, very fine crystalline, foss, chalky (3770)

LS, Cream/lt gray, fine crystalline, foss, chalky (3780)

SH, Black (trace 3790/3800)

LS, Cream/lt gray, fine crystalline, foss, sl dolo, chalky + SD; Gray, fine grained, calc (3800-3810)

LS, Cream/tan, fine crystalline, foss/ool in part, chalky w/trace red shale stain + SH; Red, silty (3820)

LS, Gray/lt gray, fine crystalline, foss, sl dolo (3830)

SH, Red/gray, silty-sandy (3840)

LS, Cream/tan, very fine crystalline to fine crystalline, foss, chalky, sl dolo (3850)

SH, Black (tr 3850)

LS, Cream/lt gray, fine crystalline, foss, very chalky (3852/15')

LS, Cream/tan, fine crystalline to dense, foss, subgranular in part, sl dolo, chalky, w/ir poor moldic por (barren) (3852/30')

LS, Cream/tan/lt gray, fine crystalline to dense, foss, sl dolo, chalky + SH; Red (3860)

LS, Cream/lt gray, fine crystalline to dense, foss, chalky (3870)

LS, Lt gray, dense, foss, chalky (3878)

SH, Black (abundant 3878)

LS, Tan/brown, dense, sl foss (3878/15')

SH, Bluish-gray, sandy (3890)

SH, Red, silty-sandy (flood 3900)

SH, Gray, silty (3906)

LS, Cream/lt gray, fine crystalline, foss/ool, granular, poor ppt por (barren), very chalky (soft/white)(3906)

LS, Cream/lt gray, fine crystalline to dense, foss, sl dolo, chalky, trace red shale stain + SH; Red silty (3906/15-30')

SH, Red/gray (3910)

LS, Cream/lt gray, fine crystalline to dense, foss, oolitic-granular in part, sl cherty (orange inclusions) chalky (3920-3923)

LS, Lt gray/tan, dense, foss subgranular, chalky, cherty, tr SH; Dark gray (4030-4035)

LS, Cream/lt gray, dense, ool/foss w/ir poor pug por, trace dead stain along fracture, silty, nso (3923/15-30')

LS, Cream/lt gray, dense, foss, cherty + SH; Black (3930)

SH, Maroon/gray, silty (3940/flood 3943)

LS, Cream, fine crystalline, ool/foss, granular, no vis por (3943/15') trace poor moldic por w/spot dead stain on 1-2 pieces in tray, nso (3943/30')

LS, Lt gray/tan, dense, blocky + SH; Gray (3943/45')

SH, Red (3950)

LS, Tan/lt gray, fine crystalline, foss, very cherty (orange blocky) (3952/15')

LS, Cream, very fine crystalline, foss, sl dolo, very cherty (3952/30')

LS, Cream, fine crystalline, very chalky (soft), very cherty + SH; Gray (3962/15')

SH, Red (3970)

LS, Cream/tan, dense, ool, chalky, cherty (3970/15')

SH, Red, silty (3970/30')

LS, Cream/lt gray, fine crystalline to dense, ool/foss w/ir shale impurity + SH; Red (3980)

LS, Cream/lt gray, very fine crystalline to dense, very chalky (soft/white) (3984/15-30')

LS, Cream, fine crystalline, foss, sl cherty, cherty (3984/45')

LS, Cream/lt gray, very fine crystalline, sl foss, very chalky (3996)

SH, Red/gray (3996)

LS, Cream/lt gray, fine crystalline, ool-granular in part, chalky, poor moldic por, trace poss light gray dead stain, nso (3996/15')

LS, Cream, fine crystalline, foss, granular in part, very chalky/cherty (cream/angular to blocky) trace poor ppt w/ir dead stain, slight pungent odor, nso (4010/15')

LS, Lt gray, very fine crystalline to dense, foss, chalky, cherty (angular), w/trace dead stain on chert, nso (4010/30')

LS, Cream/lt gray, fine crystalline, foss, chalky, cherty (4010/45')

SH, Black (tr 4020)

LS, Brown, dense, hard, foss, chalky, cherty (4020)

SH, Red, silty (4020-4030)

LS, Cream/lt gray, dense, foss subgranular, chalky, cherty, tr SH; Dark gray (4030-4035)

LS, Cream/lt gray, very fine crystalline to dense, foss, chalky (soft) sl cherty (orange inclusions) (4035-15-30')

LS, Cream, very fine crystalline, foss, subgran in part, chalky w/SH; Red/gray (4035/45' 4040)

LS, Cream/lt gray, fine crystalline, foss, chalky (4050)

SH, Dark gray (4060)

SH, Maroon, silty + LS; Gray, fine crystalline, foss (4060)

SH, Red, silty-sandy + SD; Clear, fine to coarse, well-cem (4072)

LS, Lt gray/cream, fine crystalline, foss, chalky w/por to fair moldic; intercrystalline por, fsfo (light brown), gas bubbles, faint odor, med to dark brown patchy to full sat on dry (tr 4072 incr. 4072/15-30')

SH, Gray/dark gray, soft, gummy (4072/30' incr 45')

SH, Dark gray/red + LS; Gray, very fine crystalline, sl foss (4080-4090)

SH, Red, silty-sandy (4090/15') + SD; Blue-gray, silty (4100)

LS, Cream/lt gray, fine crystalline to dense, foss, sl cherty (4100)

LS, Cream, dense, chalky (4110)

SH, Black (4110)

SH, Red/green-gray (4110)

LS, Lt gray, fine crystalline to dense, foss, chalky (4120/45')

SH, Red, silty (4130)

SH, Red/gray, sandy w/clusters, calc, ang, well-cem + LS; Cream, dense, sl foss (4140)

SH, Maroon, sandy (4150)

LS, Cream/lt gray, dense, chalky + SH; Gray (4160)

SH, Gray, sandy + LS; Cream, dense, sandy(4170)

SH, Maroon, sandy (4180)

SD, Maroon/gray, silty, hard, fine grain, angular, calc + LS; Cream, dense + SH; Red, sandy (4190)

SH, Brown/gray ery sandy w/hard concretions + SH; Green-gray + LS; Dense, foss (4200) + SH; Maroon/gray, platy (4210)

LS, Cream/lt gray, very fine crystalline to dense, foss, granular in part, chalky + SD; Gray, fine grained (4220)

SH, Red, sandy (4230)

LS, Cream, very fine crystalline to dense, sl foss, chalky + LS; Gray, dense, sl chalky, shaley + SH; Red/gray (4240)

LS, Cream, dense, chalky + LS; Cream/gray, dense, arg + SH; Red/gray (4250)

SH, Med gray, calc, sandy in part + LS; Cream/tan, sl foss, chalky (4260)

LS, Tan, fine crystalline to dense, foss + LS; Gray, dense, foss + SH; Gray/dark gray (4270)

SH, Gray, sandy (4280)

SH, Gray, sandy + LS; Cream, dense, foss, chalky (4290-4300)

SH, Black (4300)

LS, Cream, fine crystalline, foss, chalky (4310)

SH, Black (flood 4310)

SH, Gray, sandy + SD; Blue-gray, fine grained, friable (4320)

LS, Cream/tan, fine crystalline to dense, very foss, chalky, sl chert (4320)

LS, Cream, fine crystalline, foss, chalky, sl cherty, no vis por, tr edge gilsonite stain on dry + LS; Gray, dense, foss + SH; Red(4330)

SH, Gray (4340)

LS, Cream/tan, dense, foss, chalky, cherty (orange-angular) (4340)

LS, Cream/tan, fine crystalline, foss, chalky + LS; Cream/gray, dense, sl foss, w/ir shale staining + SH; Red + SD + SD; Gray, very fine grained, hard (4350)

LS, Cream/tan, very fine crystalline to dense, foss, chalky + LS; Cream/gray, dense, hard, w/ir shale impurity + SH; Black/red (4360)

SH, Red, sandy, coarse + LS; Cream/lt gray, dense, chalky (4370)

SH, Red, sandy + SH; Green/gray/SD; Gray/clear, fine to coarse, well rounded + LS; Cream/gray, dense, chalky (4380-4390)

SH, Red/gray, sandy (angular + SD; Clear/white, w/ir shale stain, angular (4400-4410)

SD, White/clear, fine grained, subrounded, friable to well-cemented + Chert, Tan/gray, angular to blocky + LS; Tan, dense, sl foss w/ir shale stain (4420) + SH; Brown, blocky (4420/15')

Chert, Cream/gray, blocky, trace bipelite + LS; Lt gray, dense (4420/30-45' 4430) scatt dull fl nso

Chert, White, sl trip + Dolo; Tan, dense + SD; Clear, well-cem (4440)

Chert, Cream/white/lt tan, blocky-sharp, sl trip (flood 4450) w/SH, Red, sandy, tr Dolo; Cream, dense (4460)

Chert, White/tan, sharp + LS; Cream/white, fine crystalline, chalky, tr Dolo; Gray, fine crystalline to dense, trace red shale staining (4470)

Dolo; Cream/gray, fine crystalline to dense + Chert, White/tan, sharp (4490)

Dolo; Cream, dense, hard + SH; Red, sandy + SH; Black, foss (bivalve) pyritic (4500) scatter dull fl nso

Dolo; Tan, very fine crystalline + Dolo; Cream, fine crystalline, chalky + Chert; Cream/white, sharp + SH; Gray/brown, blocky (4500/15-30') even dull fl nso

Dolo; Tan/gray, fine crystalline, cherty (4500/45')