

**COMPENSATED NEUTRON
DENSITY/PE
LOG**

Company ETERNITY EXPLORATION, LLC
 Well A7 FAMILY FARM #1
 Field N/A
 County THOMAS State KANSAS

Location: API #: 15-193-20995-0000
 947' FSL & 1953' FEL
 SEC 7 TWP 9S RGE 31W
 Permanent Datum GROUND LEVEL Elevation 2954
 Log Measured From KELLY BUSHING 7' A.G.L
 Drilling Measured From KELLY BUSHING
 Other Services DIL
 Elevation K.B. 2961
 D.F. 2959
 G.L. 2954

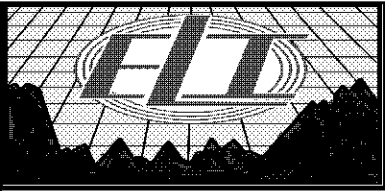
Date	5/31/17	
Run Number	ONE	
Depth Driller	4680	
Depth Logger	4680	
Bottom Logged Interval	4656	
Top Log Interval	3600	
Casing Driller	8 5/8" @ 220'	
Casing Logger	220	
Bit Size	7 7/8	
Type Fluid in Hole	CHEMICAL MUD	3000 PPM
Density / Viscosity	9.4/50	
pH / Fluid Loss	9.1/7.2	
Source of Sample	FLOWLINE	
Rm @ Meas. Temp	.90 @ 68F	
Rmt @ Meas. Temp	.68 @ 68F	
Rmc @ Meas. Temp	1.08 @ 68F	
Source of Rmf / Rmc	MEASUREMENT	
Rm @ BHT	.50 @ 122F	
Time Circulation Stopped	2 HOURS	
Time Logger on Bottom		
Maximum Recorded Temperature	122F	
Equipment Number	3802	
Location	HAYS, KANSAS	
Recorded By	GUS PFANENSTIEL	
Witnessed By	LARRY NICHOLSON	

<<< Fold Here >>>

All interpretations are opinions based on inferences from electrical or other measurements and we cannot and do not guarantee the accuracy or correctness of any interpretation, and we shall not, except in the case of gross or willful negligence on our part, be liable or responsible for any loss, costs, damages, or expenses incurred or sustained by anyone resulting from any interpretation made by any of our officers, agents or employees. These interpretations are also subject to our general terms and conditions set out in our current Price Schedule.

Comments

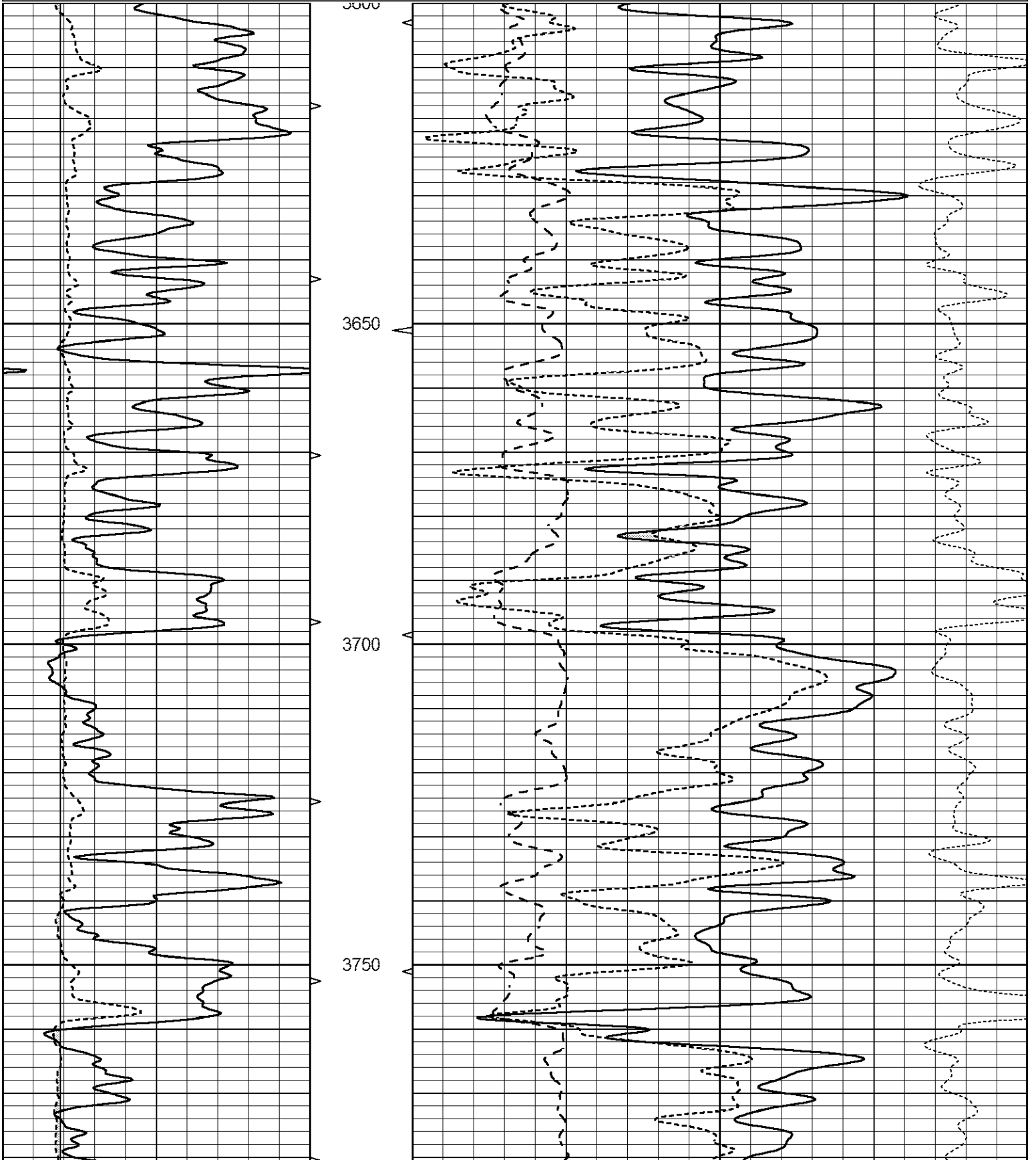
THANK YOU FOR USING ELI WIRELINE SERVICES, HAYS, KS. (785) 628-6395
 DIRECTIONS
 OAKLEY NORTH TO J. RD,
 EAST 3 MILES, NORTH 2 MILES
 WEST INTO.

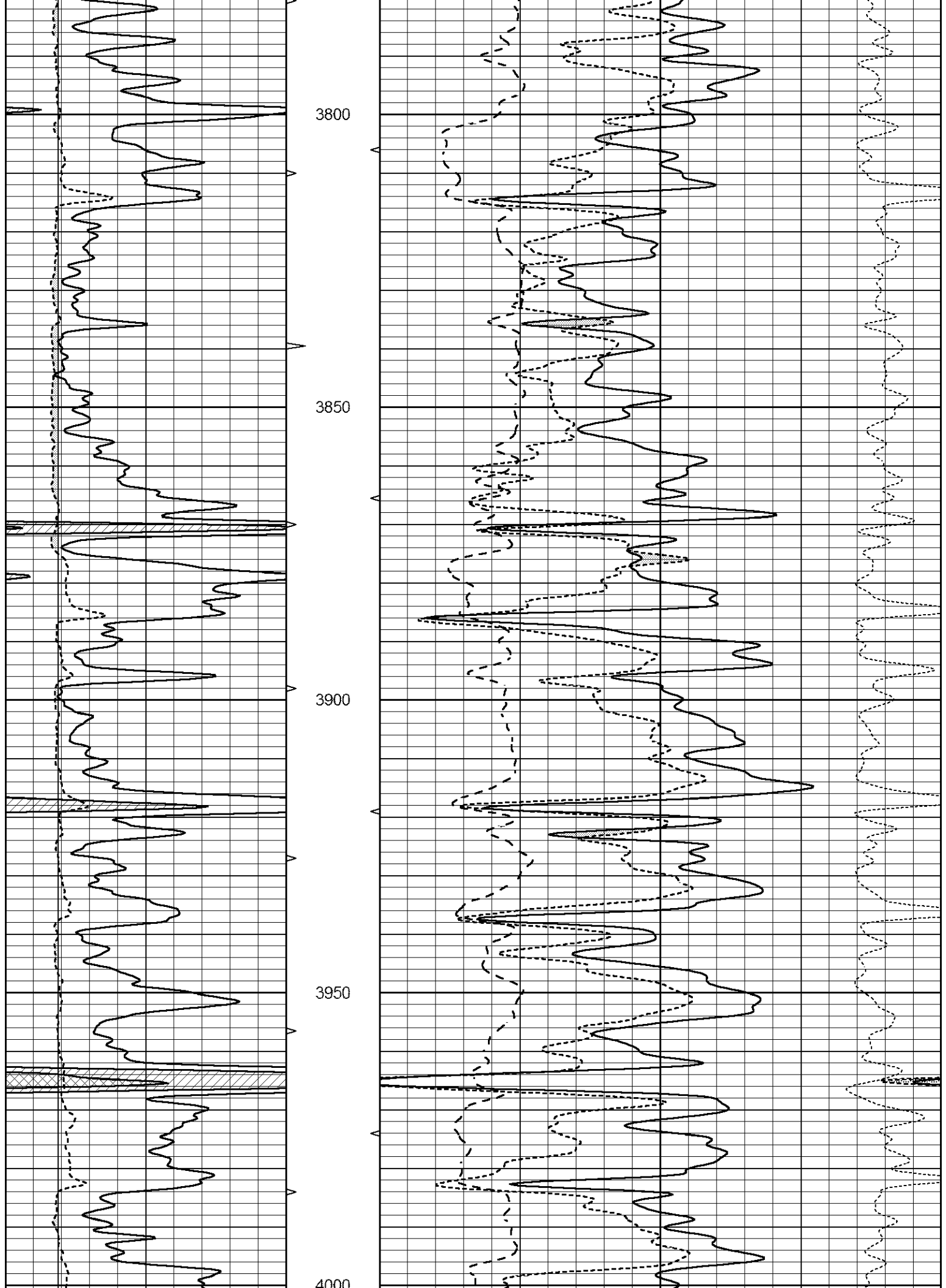


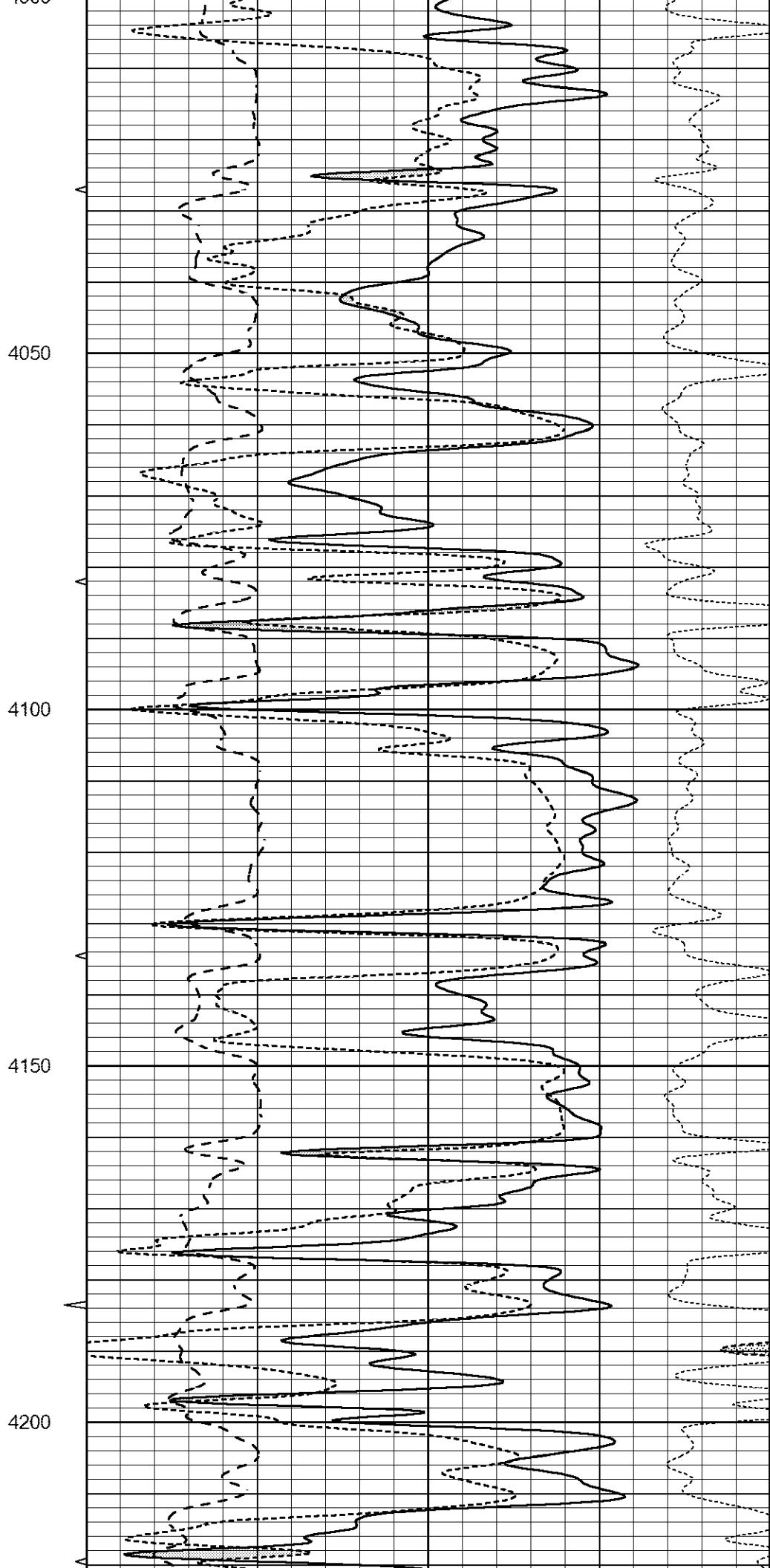
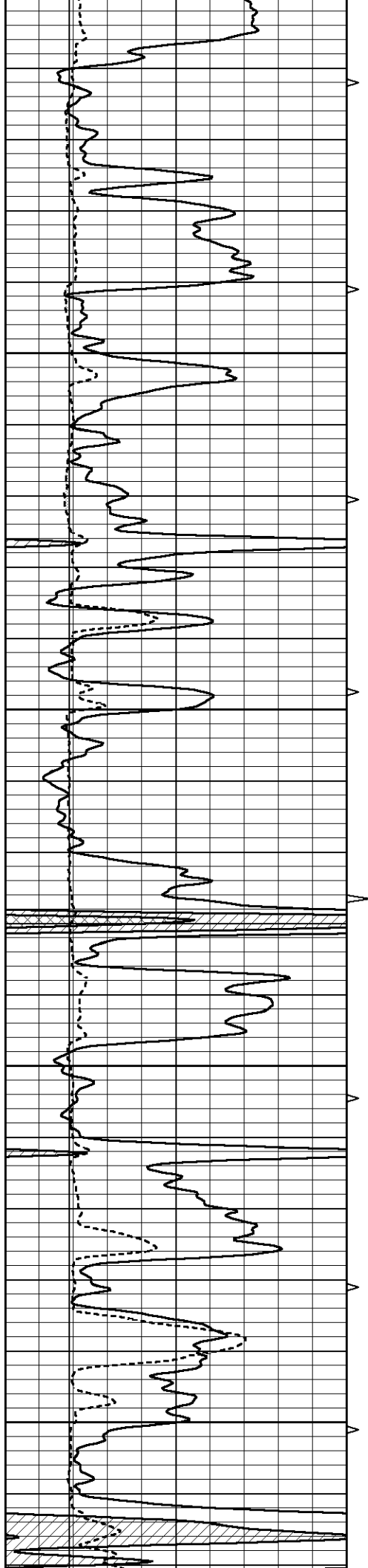
MAIN PASS

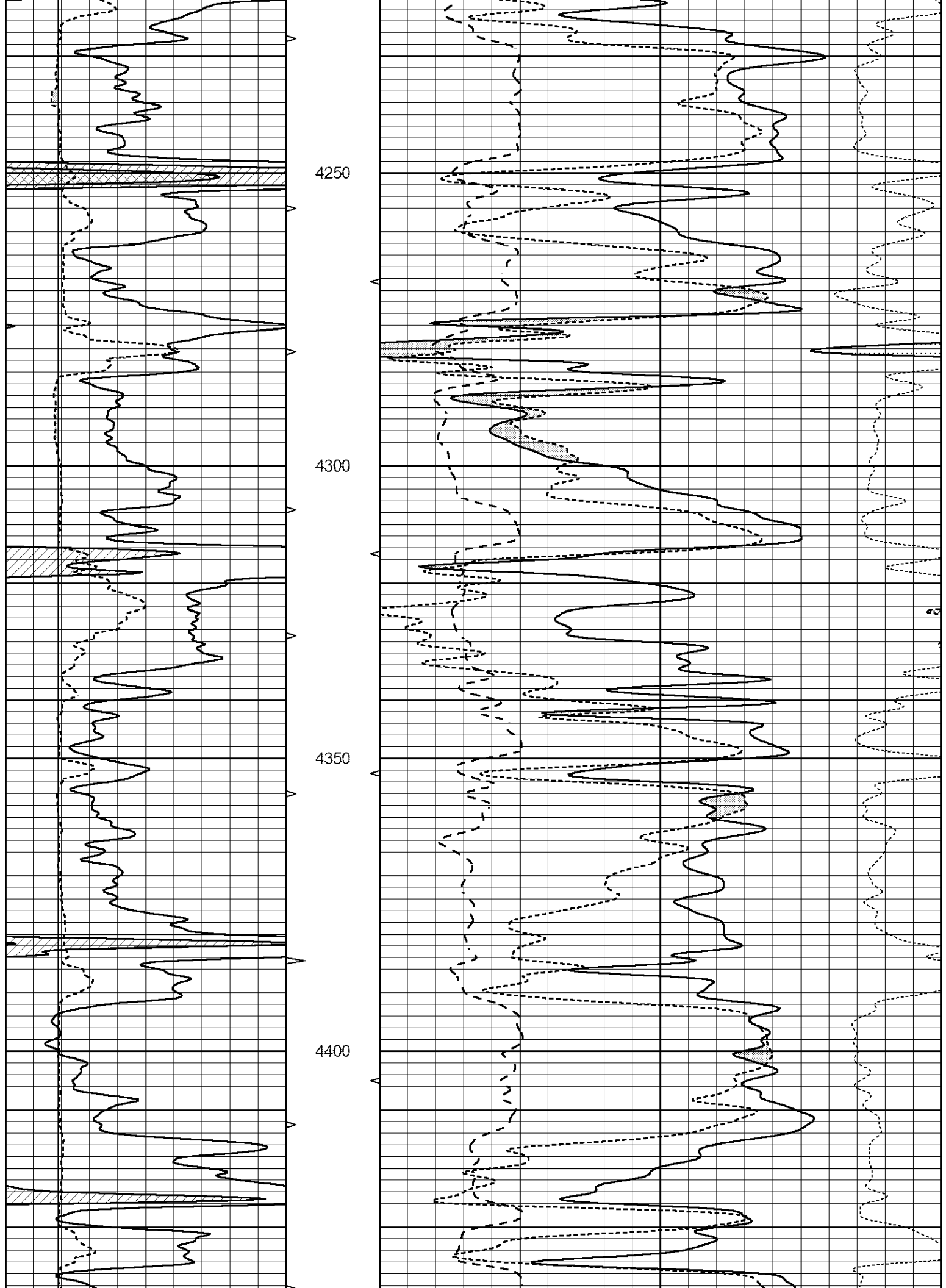
Database File 1145pe.db
 Dataset Pathname pass5.1
 Presentation Format _ldt_neu
 Dataset Creation Thu Jun 01 01:26:03 2017
 Charted by Depth in Feet scaled 1:240

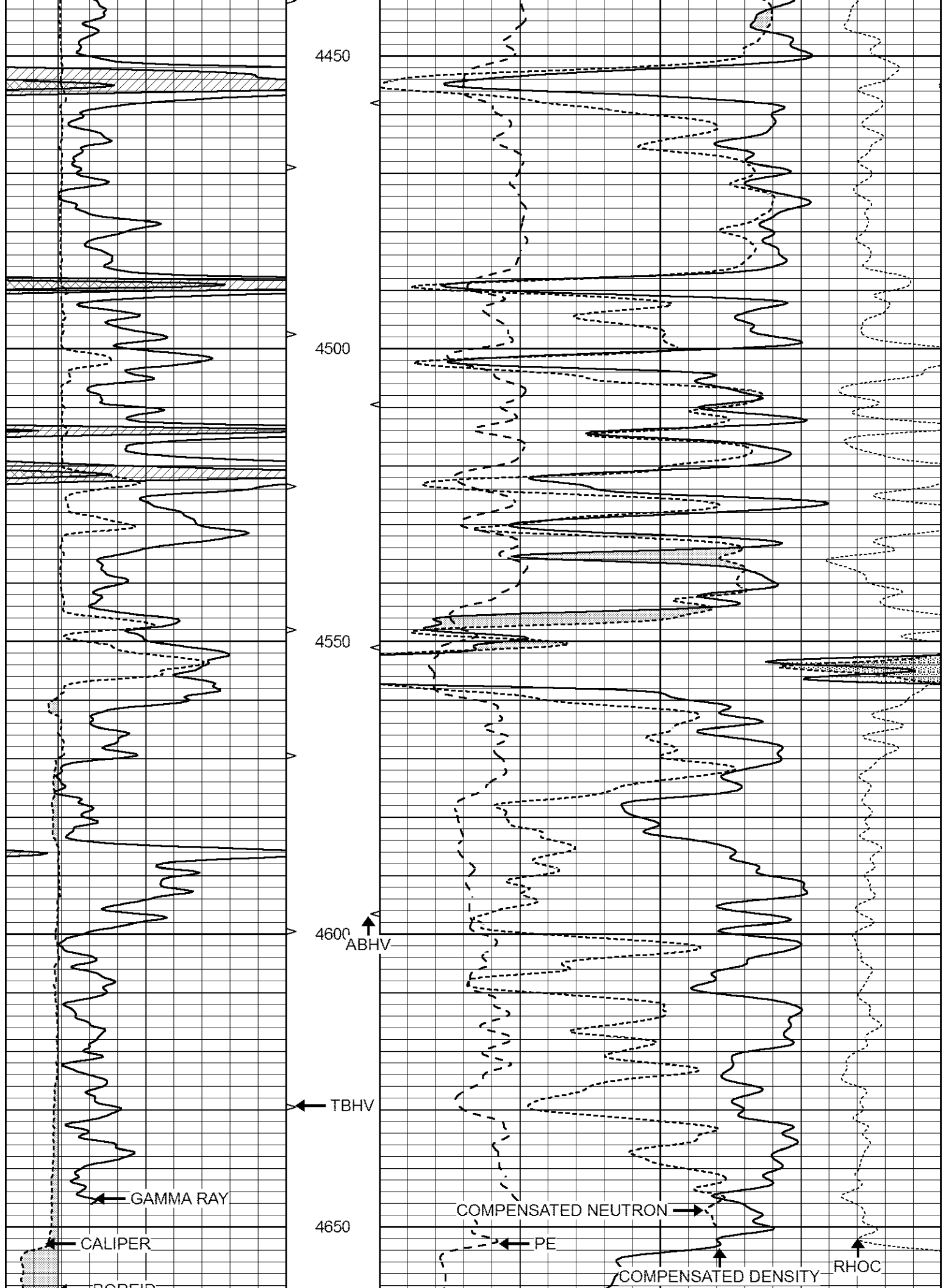
0	GAMMA RAY (GAPI)	150	ABHV	30	COMPENSATED DENSITY (pu)	-10
6	CALIPER (in)	16	10 (ft3)	0	COMPENSATED NEUTRON (pu)	-10
			TBHV	0	PE	10 -0.25
			0 (ft3)	10	CORRECTION (g/cc)	0.25



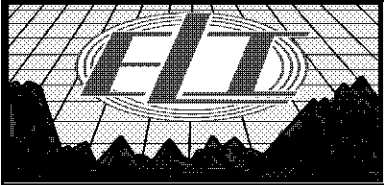








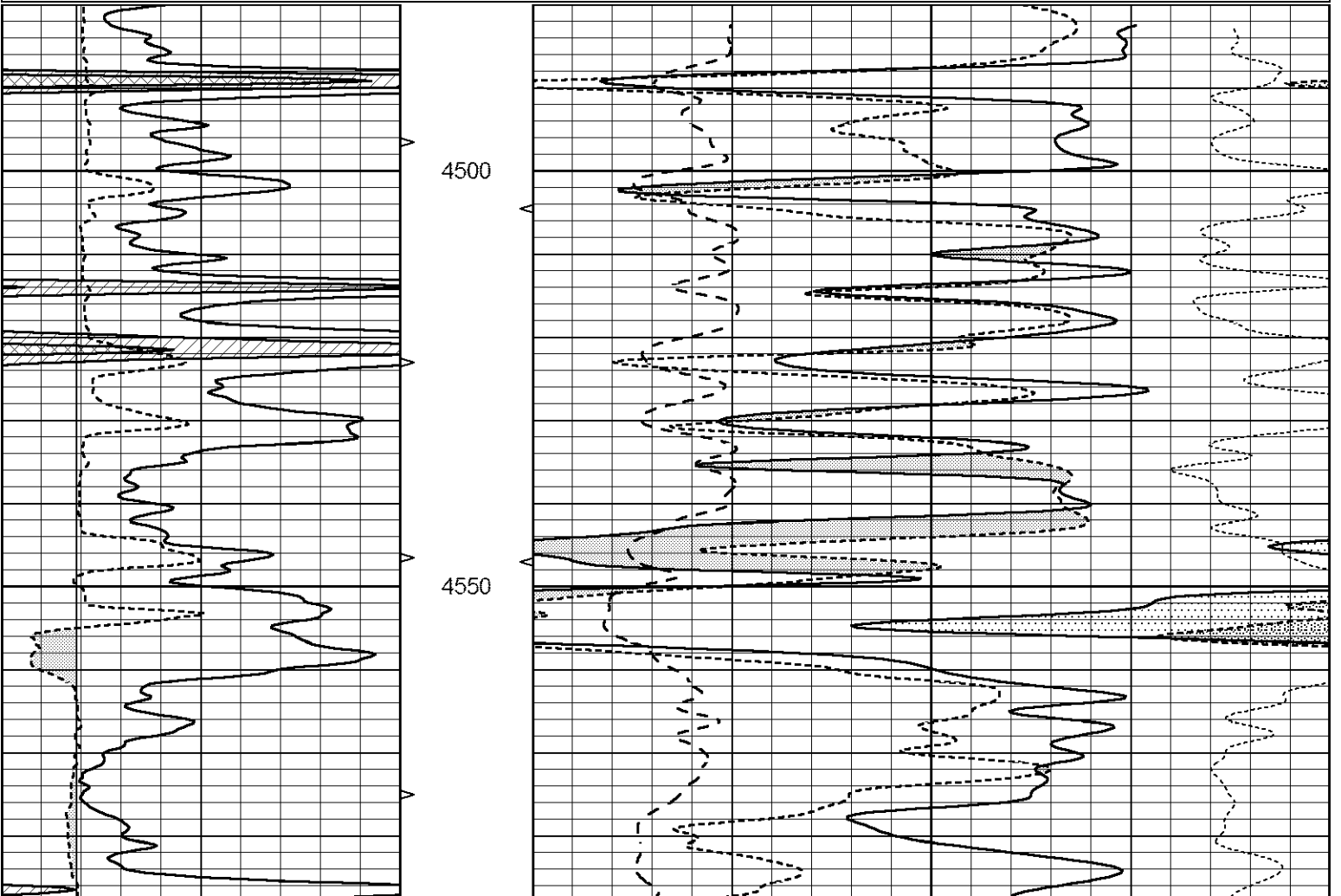
BOREHOLE		LTD 4680		LIMESTON MATRIX 2.71					
0	GAMMA RAY (GAPI)	150	ABHV	30	COMPENSATED DENSITY (pu)	-10			
6	CALIPER (in)	16	10 (ft3)	0	30	COMPENSATED NEUTRON (pu)	-10		
-----		TBHV		0	PE	10	-0.25	CORRECTION (g/cc)	0.25
-----		0 (ft3)		10					



REPEAT SECTION

Database File 1145pe.db
 Dataset Pathname pass3.1
 Presentation Format _ldt_neu
 Dataset Creation Thu Jun 01 01:37:33 2017
 Charted by Depth in Feet scaled 1:240

0	GAMMA RAY (GAPI)	150	ABHV	30	COMPENSATED DENSITY (pu)	-10			
6	CALIPER (in)	16	10 (ft3)	0	30	COMPENSATED NEUTRON (pu)	-10		
-----		TBHV		0	PE	10	-0.25	CORRECTION (g/cc)	0.25
-----		0 (ft3)		10					



	Zero	Cal		Zero	Cal		m'	b'
Deep	-0.824	395.917	mmho/m	-0.976	397.550	mmho/m	1.004	-0.149
Medium	3.565	471.327	mmho/m	3.468	471.590	mmho/m	1.001	-0.099
LL3		7.503	V		1500.000	Ohm-m		
		0.001	V		20.000	Ohm-m		
		-7.481	V		3745.000	mmho-m		

After Survey Verification								
	Readings			Targets			Results	
	Zero	Cal		Zero	Cal		m'	b'
Deep	0.000	0.000	mmho/m	-0.824	395.917	mmho/m	1.000	0.000
Medium	0.000	0.000	mmho/m	3.565	471.327	mmho/m	1.000	0.000
LL3		0.000	Ohm-m		1500.000	Ohm-m		
		0.000	Ohm-m		20.000	Ohm-m		
		0.000	mmho-m		3745.000	mmho-m		

Litho Density Calibration Report
Serial: 140704
Model: V4_10P
Source Number: 74GBq-19

Master Calibration					Performed: Wed Feb 11 18:53:41 2015			
	Background	Aluminum	Magnesium					
Window 1	613.01	6027.40	27508.60	cps				
Window 2	48.21	1424.77	7132.66	cps				
Window 4	266.48	1373.19	5767.15	cps				
Window 5	622.07	10090.30	18937.90	cps				
Window 6	49.07	1682.84	3271.18	cps				
Window 8	298.04	3248.38	5980.58	cps				
Bulk Density	-	2.6020	1.6830	g/cc				
Pe	-	3.0000	2.5070	b/e				
LS Alpha:	: -1.8451	SS Alpha:	: -0.7542	LS CPE:		: 1.0882		
LS Beta:	: 138648.8473	SS Beta:	: 21960.9250	SS CPE:		: 1.5181		

Before Survey Background Counts Verification				Performed: Wed Dec 31 18:00:00 1969			
Window 1	0.00	cps					
Window 2	0.00	cps					
Window 4	0.00	cps					
Window 5	0.00	cps					
Window 6	0.00	cps					
Window 8	0.00	cps					

After Survey Background Counts Verification				Performed: Wed Dec 31 18:00:00 1969			
Window 1	0.00	cps					
Window 2	0.00	cps					
Window 4	0.00	cps					
Window 5	0.00	cps					
Window 6	0.00	cps					
Window 8	0.00	cps					

Lithodensity Caliper Calibration				Performed: Wed Feb 11 18:53:41 2015			
Results	Readings	References (in)					

Low	High	Low	High	Gain	Offset
1107.5	7124.1	8.0	15.0	0.0	6.5
Before Survey Caliper Verification		Performed:			
	Reference	Reading			
Caliper (in)	_____	_____			
After Survey Caliper Verification		Performed:			
	Reference	Reading			
Caliper (in)	_____	_____			
Compensated Neutron Calibration Report					
		Serial Number:	080621PMC		
		Tool Model:	NABORS		
PRE-SURVEY VERIFICATION					
	Detector	Readings	Measured	Target	
	Short Space	cps			
	Long Space	cps	pu		pu
POST-SURVEY VERIFICATION					
	Detector	Readings	Measured	Target	
	Short Space	cps			
	Long Space	cps	pu		pu
Gamma Ray Calibration Report					
	Serial Number:	070558			
	Tool Model:	Probe1			
	Performed:	Mon May 22 14:24:46 2017			
	Calibrator Value:	1.0	GAPI		
	Background Reading:	0.0	cps		
	Calibrator Reading:	1.0	cps		
	Sensitivity:	0.3800	GAPI/cps		