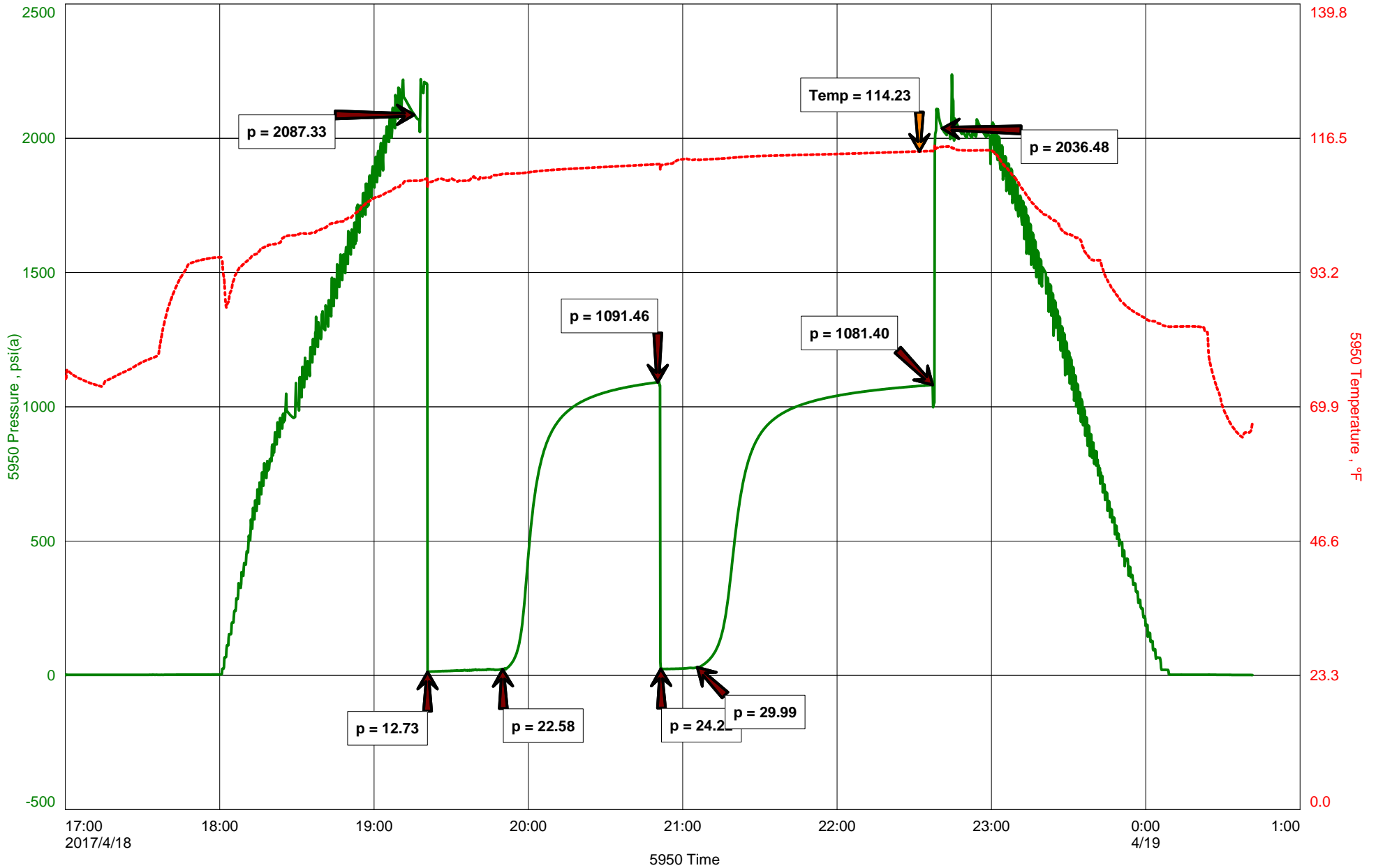


Trans Pacific Oil Corporation
Dst #2 Morrow Sand 4353-4396'
Start Test Date: 2017/04/18
Final Test Date: 2017/04/19

Cheri 'A' #1-35
Formation: Dst #2 Morrow Sand 4353-4396'
Pool: Pool Ext
Job Number: P0179

Cheri 'A' #1-35





Hoisington, Kansas

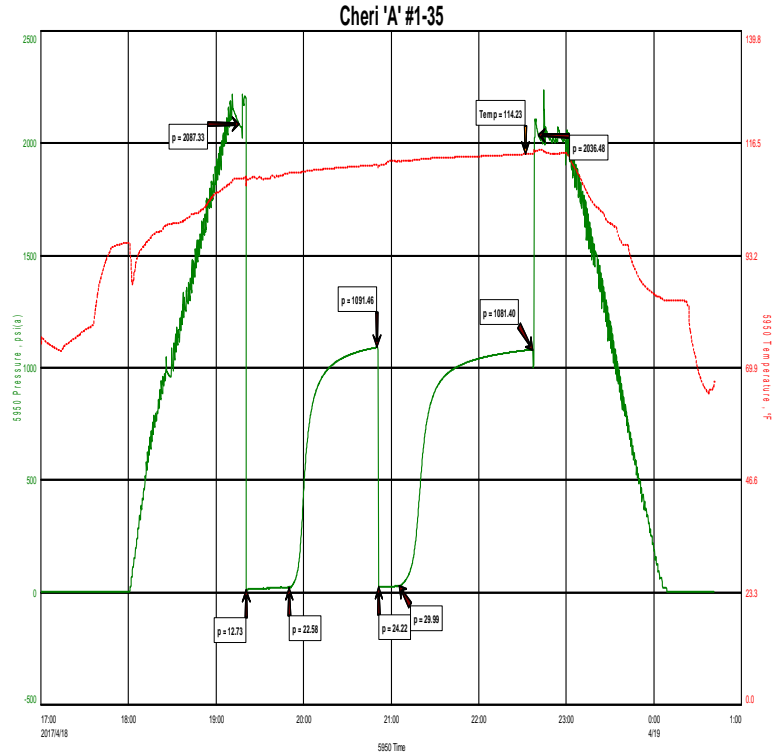
Michael Carroll
620-617-0368
carroll.dtlc@gmail.com

General Information

Company Name Trans Pacific Oil Corporation

Contact Bryce Bidleman
Well Name Cheri 'A' #1-35
Unique Well ID Dst #2 Morrow Sand 4353-4396'
Surface Location Sec 35-14s-32w Logan County
Field Smoky Hill
Well Type Vertical
Test Type Drill Stem Test
Well Operator Trans Pacific Oil Corporation

Formation Dst #2 Morrow Sand 4353-4396'
Well Fluid Type 01 Oil
Test Purpose Initial Test
Start Test Date 2017/04/18
Start Test Time 17:00:00
Final Test Time 00:42:00
Job Number P0179
Report Date 2017/04/18
Prepared By Michael Carroll



TEST RECOVERY

Remarks Recovery: 1' Clean Oil

29' OCM 6%O 94%M

Total Fluid: 30'

Tool Sample: 14%O 86%M



DIAMOND TESTING
P.O. Box 157
HOISINGTON, KANSAS 67544
(800) 542-7313
DRILL-STEM TEST TICKET
FILE: CHERI'A'1-35DST2

TIME ON: 1700 4-18
TIME OFF: 0042 4-19

Company TRANS PACIFIC OIL CORP Lease & Well No. CHERI 'A' #1-35
Contractor DUKE DRLG RIG 2 Charge to TRANS PACIFIC OIL CORP
Elevation 2734KB Formation MORROW SAND Effective Pay _____ Ft. Ticket No. P0179
Date 04-18-17 Sec. 35 Twp. 14 S Range 32 W County LOGAN State KANSAS
Test Approved By BRYCE BIDLEMAN Diamond Representative Michael Carroll

Formation Test No. 2 Interval Tested from 4353 ft. to 4396 ft. Total Depth 4396 ft.
Packer Depth 4348 ft. Size 6 3/4 in. Packer depth _____ ft. Size 6 3/4 in.
Packer Depth 4353 ft. Size 6 3/4 in. Packer depth _____ ft. Size 6 3/4 in.

Depth of Selective Zone Set _____

Top Recorder Depth (Inside) 4338 ft. Recorder Number 5950 Cap. 5000 P.S.I.
Bottom Recorder Depth (Outside) 4388 ft. Recorder Number 5588 Cap. 6000 P.S.I.
Below Straddle Recorder Depth _____ ft. Recorder Number _____ Cap. _____ P.S.I.

Mud Type Chem Viscosity 54 Drill Collar Length 0 ft. I.D. 2 1/4 in.
Weight 9.1 Water Loss 10.4 cc. Weight Pipe Length 0 ft. I.D. 2 7/8 in.
Chlorides 3300 P.P.M. Drill Pipe Length 4325 ft. I.D. 3 1/2 in.
Jars: Make STERLING Serial Number NA Test Tool Length 28 ft. Tool Size 3 1/2-IF in.
Did Well Flow? NO Reversed Out NO Anchor Length 43(12A) ft. Size 4 1/2-FH in.
Main Hole Size 7 7/8 Tool Joint Size 4 1/2 XH in. Surface Choke Size 1 in. Bottom Choke Size 5/8 in.

Blow: 1st Open: WSB-BUILT TO 1" IN 30 MINUTES **NOBB**
2nd Open: NO BLOW-NO BUILD **NOBB**

Recovered 1 ft. of CLEAN OIL
Recovered 29 ft. of OCM 6%O 94%M
Recovered 30 ft. of TOTAL FLUID

Recovered _____ ft. of _____	Price Job
Recovered _____ ft. of _____	Other Charges
Recovered _____ ft. of _____	Insurance
Remarks: <u>TOOL SAMPLE:14%O 86%M</u>	Total

Time Set Packer(s) 7:20 P.M. ^{A.M.}/_{P.M.} Time Started Off Bottom 10:35 P.M. ^{A.M.}/_{P.M.} Maximum Temperature 114

Initial Hydrostatic Pressure..... (A) 2087 P.S.I.
Initial Flow Period..... Minutes 30 (B) 13 P.S.I. to (C) 23 P.S.I.
Initial Closed In Period..... Minutes 60 (D) 1091 P.S.I.
Final Flow Period..... Minutes 15 (E) 24 P.S.I. to (F) 30 P.S.I.
Final Closed In Period..... Minutes 90 (G) 1081 P.S.I.
Final Hydrostatic Pressure..... (H) 2036 P.S.I.

Diamond Testing shall not be liable for damages of any kind to the property or personnel of the one for whom a test is made or for any loss suffered or sustained, directly or indirectly, through the use of its equipment, or its statement or opinion concerning the result of any test. Tools lost or damaged in the hole shall be paid for at cost by the party for whom the test is made.