

Geo Log Header
WellSight Systems

Scale 1:240 (5"=100") Imperial
Measured Depth Log

Well Name: Koster H 1-32
API: 15-179-21434-00-00
Location: Section 32 - T8S - R29W Sheridan County, KS
License Number: 33268
Spud Date: 03- 31-2017
Surface Coordinates: 450' FNL & 660' FWL
Region:
Drilling Completed: 4-8-2017

Bottom Hole
Coordinates:
Ground Elevation (ft): 2836' K.B. Elevation (ft): 2843'
Logged Interval (ft): 3500' To: 4250' Total Depth (ft):
Formation: Kansas City
Type of Drilling Fluid: Chemical/Polymer/Gel

Printed by STRIP.LOG from WellSight Systems 1-800-447-1534 www.WellSight.com

OPERATOR

Company: RL Investment. LLC
Address: 2698 J O Terrace
Hill City, KS 67642

GEOLOGIST

Name: Patrick J. Deenihan
Company:
Address:

REMARKS

Samples were put in KS. Geological Survey storage office.

Respectfully submitted,

Pat J. Deenihan

DSTs

DST #1 (3946-3991') 30"-45"-45"-60"
1st Open: Built to 5" in 30" No Blow Back
2nd Open: Built to 6" in 45" No Blow Back
REC: 185' WM. (35% Water-65% mud.)
IFP: 13-71# FFP: 73-103#
ISIP: 1289# FSIP: 1276#
IHP: 1905# FHP: 1893#

DST #2 (4046-4102) 30"-45"-45"-60"
1st Open: 1/4" Blow Built to 4" No Blow Back
2nd Open: W.S.B. Built to 3.5" No Blow Back
REC: 75' GIP; 25' Clean oil Gravity 33@ 60 degrees Far.
50' Sli- GCOCWM. (2% Gas,20% Oil, 30% Wtr. 48% Mud,)
IFP: 30-38# FFP: 59-70#
ISIP: 885# FSIP: 931#
IHP: 1973# FHP: 1960#

DST #3 (4085' - 4102') 30"-45"-45"-60"
1st Open: BOB in 9" No Blow Back
2nd Open: BOB in 1" 40 Sec. No Blow Back
REC: 3858' GIP; 1' of Clean Oil; 93' OCM (33% OIL-67% Mud)
122' WCMCO (60% Oil-10% Wtr.-30% Mud)
IFP: 13-78# FFP: 65-107#

ISIP: 112#
IHP: 1985#

FSIP: 108#
FHP: 1983#

DST #4 4146-4167

30-30-30-30"

IF: .25"

FF: No blow

NO BB

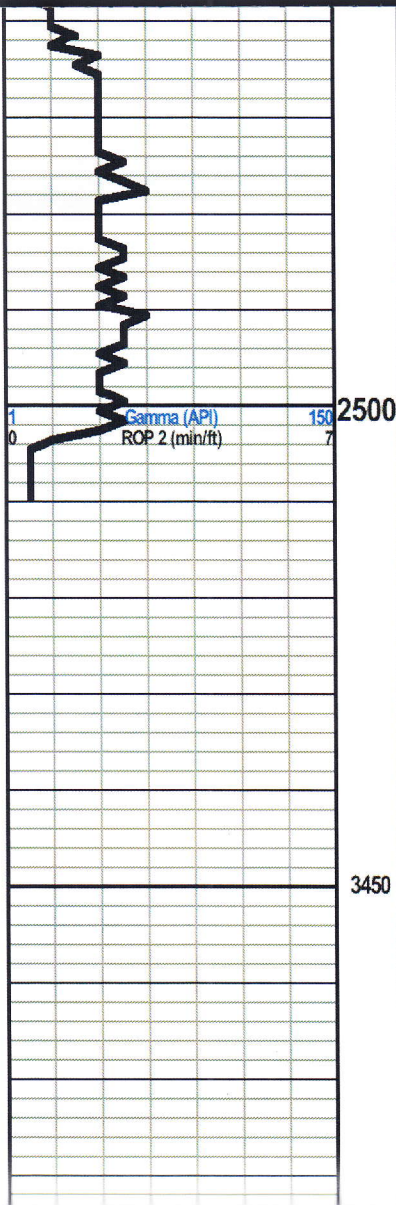
Rec: 1' OCM

IFP: 11-12#

FFP: 15-12#

SIP: 16-14#

Curve Track 1			Depth	Lithology <small>Oil Shows</small>	Geological Descriptions	Engineering Data			
Gamma (API)	ROP 2 (min/ft)	TG (Units)				C1 (units)	C2 (units)	C3 (units)	C4 (units)
1	Gamma (API)	150	0000			0	TG, C1-C5	400	
0	ROP 2 (min/ft)	7							
			2450						



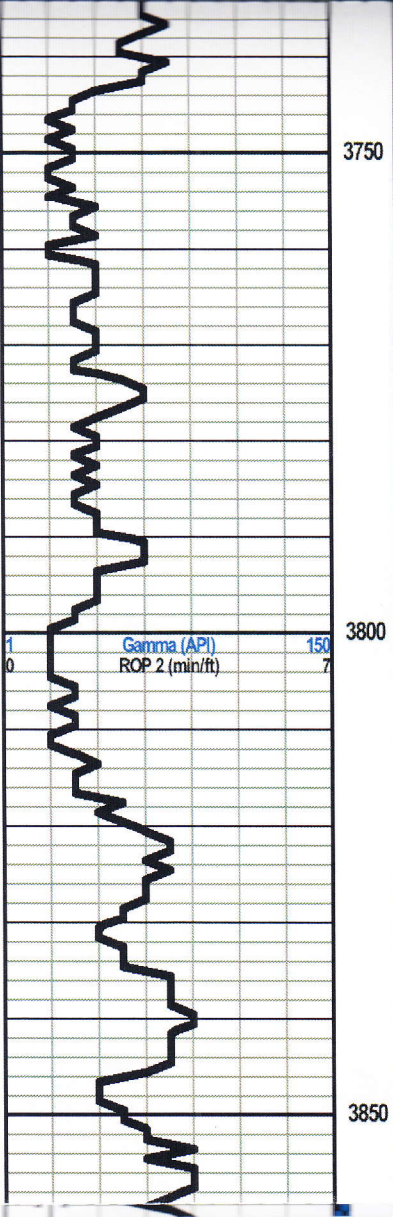
ANHYDRITE 2463 (+373)

BASE/ ANHY. 2503 (+333)

TG, C1-C5

Geologist on location = *

- 03-31-17 : Spud Well
- 04-01-17 : 250' Set Surface
- 04-02-17 : 1800'
- 04-03-17 : 2834'
- 04-04-17 : 3440*
- 04-05-17 : 3895'
- 04-06-17 : 3991**
- 04-07-17 : 4090' *
- 04-08-17 : 4102**
- 04-09-17 : 4132**
- 04-10-17 : 4217**



Ls., Fn. to Inter-xln., Fssl. (Ool) Scat. Black Dead Oil strn. No LFO., Odor or Fluor

King Hill 3794 (-951)

Sh., Black Carb.

Ls., Wht., Lt-Gry., Micro-xln., trace o Fresh Sharp Chert., trace of Ool. Chalky with depth. No Show.

Sh., Vari- color. Gummy to Argil.

Ls., Wht. to crm., Sli-Fssl., Micro to Fn-xln., Sub- Chalky, No show.

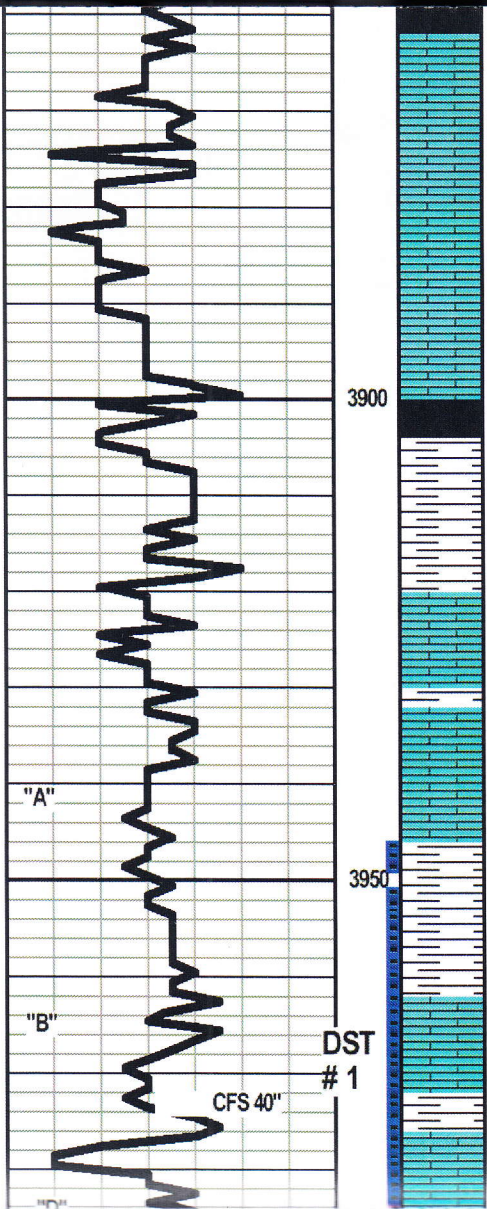
Sh., Gry., Grn., Brn.. Argil.

Ls., As/Above.

Queen Hill 3858 (-1015)

TG, C1-C5

400



Sh., Black Carb. Queen Hill 3838 (-1015)
 Ls., wht., Lt-Gry. Fn-xln., Fssl., Sub -Chalky., scattered Blsck
 desd oil stn. No Free Oil, No Odor, No Fluor.

SHORT TRIP @ 3969

Ls., As/ Above.

HEEBNER 3900 (-1057)

Sh., Black Carb.

Sh., Gry, Grn., Brn. Argil

TORONTO 3920 (-1077)

Ls., Wht., Tan., Fn-xln., Fssl., Trc. of chert No show

LANSING 3933 (-1090)

Ls., Wht., Lt-Gry. Fn-xln., Fssl. sli Cherty to sub-Chalky. NO
 Show.

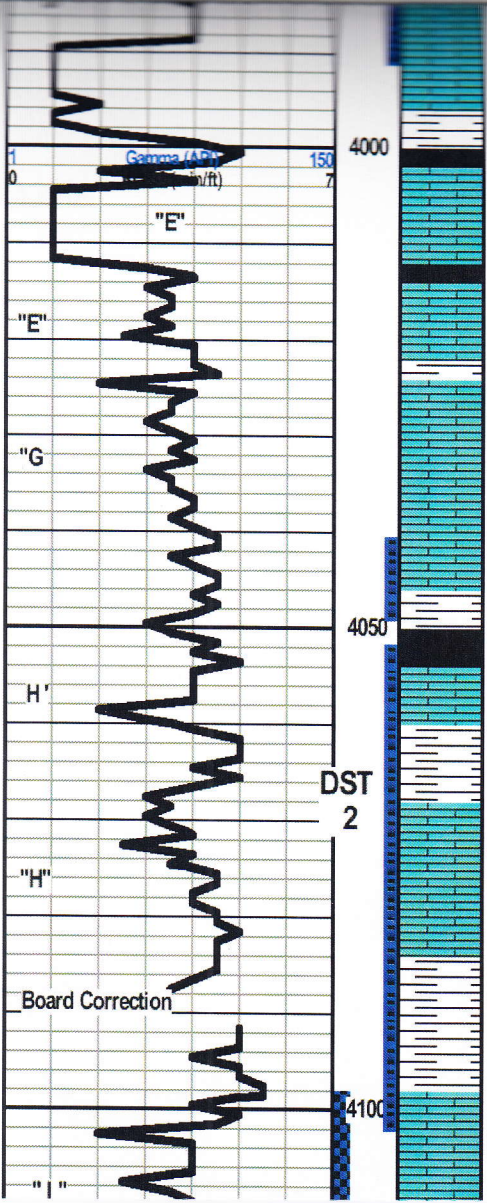
Sh., Choc. Brn., Gry., Grn., gummy to Argil

Samples washing Brown.

Ls., Wht., Crn., Lt-Gry., Fn-xln., Fn-Inter-xln., to sli-Fssl.
 Abund. Scattered Black Oil Stn.

Sh., Gry.

Ls., Wht., Lt-Gry., Crn., Fn-xln., Fssl. (Ool.) F-inter-xln por.,
 Scat., LFO Dk-Brn. to LT-Brn. Abund Brn. stn. on edges, Light
 to Fair Sweet Odor, Scat.P-Flor.



Ls., as above with decrease of show.

Sh., Black
Ls., Wht., Crm., Fn-xln., sli-Fssl., Sub-Chalky, No show.

Sh., Black Carb.

Ls., Wht., Lt-Gry Micro xln to Fssl., (Ool)

Sh., Gry., Brn. Grn., Argil.

Ls., wh, crm, vf gr, p intgran Por, dnse, no show

Sh., Black Carb.

Sh., rd, gy

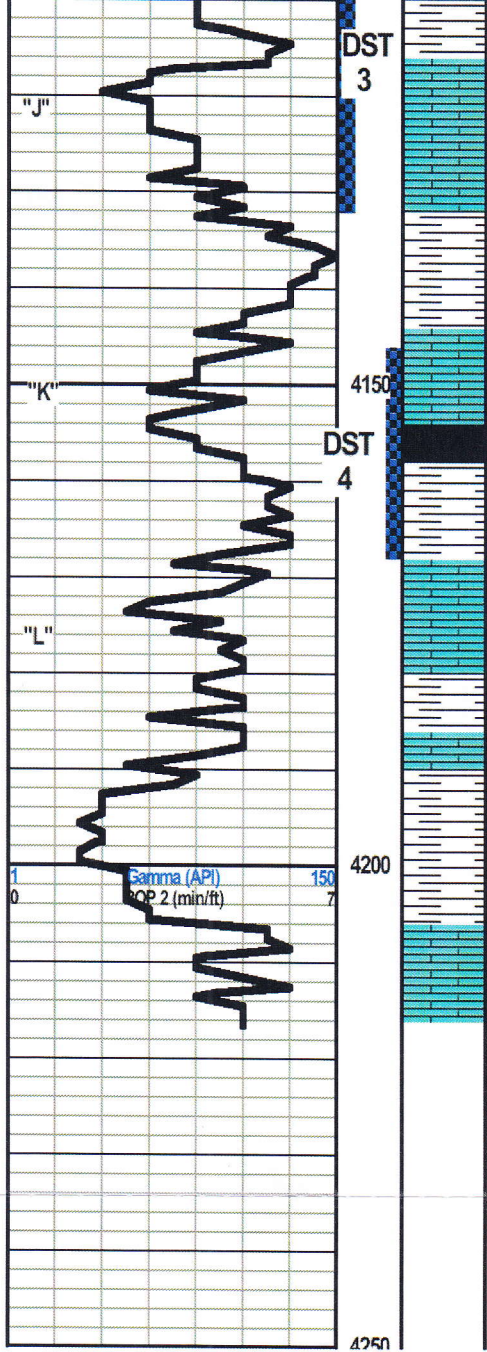
Ls., crm, tn, dolie, vf xln, fr intbdn Por, FSFO, fr odr, fluor

Ls., wh, gy, vf gr, dd O str, SSFO upon crush, ft odr

Sh., Vari-Color

Ls., Wht., Lt-Gry, Fn-xln., Sli-Ool., Scat, Black Flakey Oil Str., No Odor, No Fluor., No LFO.

0 TG, C1-C5 400



Ls Crm., Lt, Gry., Ool with Fn-grn Inter- Dolo. Matrix, GSLFO. G-Odor. Bright Fluor.

Sh., Vari-Color. Argil.

Ls., Crm. Lt-Gry. Fn-xln., Fssl. (Ool) Scat. Strn., G-SLFO in a few pcs upon Crushing.Sli-Odor.

Ls., Lt-Gry., Gry. Dense Micr-xln., Sub Chalky No show

Sh., Vari Color. Argil.

BKC 4178 (-1335)

Sh., Vari-Color.

Ls., Gry., Sub Chalky to Dense Fn-xln., No Show.

RTD:=4217'

LTD- 4216'

0 TG, C1-C5 400