



DRILL STEM TEST REPORT

Prepared For: **YOIUNGER EMERGY COMPANY**

9415 E HARRY SUITE 4035
WICHITAA, KANSAS 67207-

ATTN: KEITH REAVIS

GEORGIANN BAUER 1-27

27-21S-15W PAWNEE

Start Date: 2017.04.24 @ 22:17:00

End Date: 2017.04.25 @ 04:09:00

Job Ticket #: 01166 DST #: 2

Eagle Testers
1309 Patton Road Great Bend, Kansas 67530
620-791-7394

Printed: 2017.04.25 @ 04:28:25



DRILL STEM TEST REPORT

YOIUNGER EMERGY COMPANY

27-21S-15W PAWNEE

9415 E HARRY SUITE 4035
WICHITAA, KANSAS 67207-

GEORGIANN BAUER 1-27

ATTN: KEITH REAVIS

Job Ticket: 01166

DST#: 2

Test Start: 2017.04.24 @ 22:17:00

GENERAL INFORMATION:

Formation: **ARBUCKLE**

Deviated: No Whipstock: ft (KB)

Time Tool Opened: 23:39:00

Time Test Ended: 04:09:00

Test Type: Conventional Bottom Hole (Initial)

Tester: GENE BUDIG

Unit No: 1

Interval: **3873.00 ft (KB) To 3884.00 ft (KB) (TVD)**

Reference Elevations: 1962.00 ft (KB)

Total Depth: 3884.00 ft (KB) (TVD)

1954.00 ft (CF)

Hole Diameter: 7.88 inches Hole Condition: Fair

KB to GR/CF: 8.00 ft

Serial #: 9139

Inside

Press@RunDepth: 1333.90 psia @ 3879.00 ft (KB)

Capacity: 5000.00 psia

Start Date: 2017.04.24

End Date:

2017.04.25

Last Calib.:

2017.04.25

Start Time: 23:39:00

End Time:

05:30:30

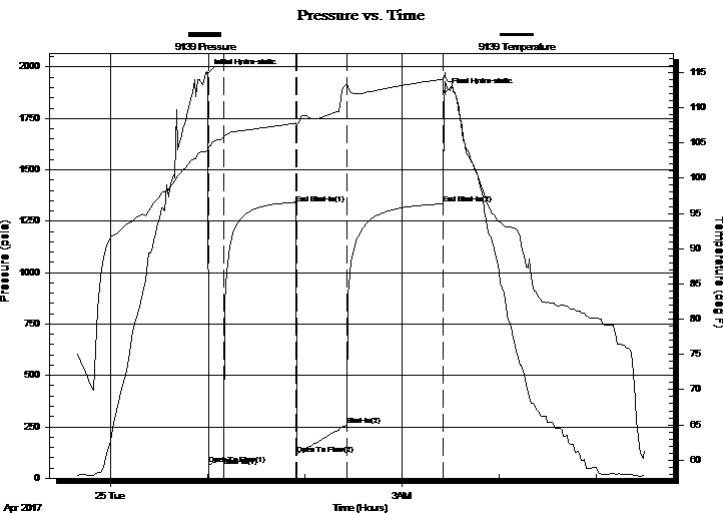
Time On Btm:

2017.04.25 @ 01:00:00

Time Off Btm:

2017.04.25 @ 03:26:30

TEST COMMENT: 1ST OPENING 10 MINUTES FAIR BLOW BOTTOM OF THE BUCKET IN 3 MINUTES
1ST SHUT-IN 45 MINUTES GOOD BLOW BACK
2ND OPENING 30 MINUTES FAIR BLOW BUILT TO THE BOTTOM OF THE BUCKET IN 4 MINUTES
2ND SHUT-IN 60 MINUTES GOOD BLOW BACK



PRESSURE SUMMARY

Time (Min.)	Pressure (psia)	Temp (deg F)	Annotation
0	1969.56	103.92	Initial Hydro-static
1	68.52	104.51	Open To Flow (1)
10	102.92	105.72	Shut-In(1)
55	1333.83	107.80	End Shut-In(1)
56	117.91	107.51	Open To Flow (2)
86	258.68	113.43	Shut-In(2)
146	1333.90	114.02	End Shut-In(2)
147	1876.65	115.00	Final Hydro-static

Recovery

Length (ft)	Description	Volume (bbl)
0.00	720 FEET OF GAS IN THE PIPE	0.00
560.00	CLEAN GASSY OIL	7.86
0.00	GRAVITY 41 CORRECTED	0.00
60.00	OIL AND GAS CUT MUD	0.84
0.00	5 GAS 25 OIL 70 MUD	0.00

Gas Rates

	Choke (inches)	Pressure (psia)	Gas Rate (Mcf/d)



DRILL STEM TEST REPORT

YOIUNGER EMERGY COMPANY

27-21S-15W PAWNEE

9415 E HARRY SUITE 4035
WICHITAA, KANSAS 67207-

GEORGIANN BAUER 1-27

ATTN: KEITH REAVIS

Job Ticket: 01166

DST#: 2

Test Start: 2017.04.24 @ 22:17:00

GENERAL INFORMATION:

Formation: **ARBUCKLE**

Deviated: No Whipstock: ft (KB)

Time Tool Opened: 23:39:00

Time Test Ended: 04:09:00

Test Type: Conventional Bottom Hole (Initial)

Tester: GENE BUDIG

Unit No: 1

Interval: **3873.00 ft (KB) To 3884.00 ft (KB) (TVD)**

Reference Elevations: 1962.00 ft (KB)

Total Depth: 3884.00 ft (KB) (TVD)

1954.00 ft (CF)

Hole Diameter: 7.88 inches Hole Condition: Fair

KB to GR/CF: 8.00 ft

Serial #: **91716** Outside

Press@RunDepth: 1328.28 psia @ 3879.00 ft (KB)

Capacity: 5000.00 psia

Start Date: 2017.04.24

End Date:

2017.04.25

Last Calib.:

1899.12.30

Start Time: 23:39:00

End Time:

05:30:00

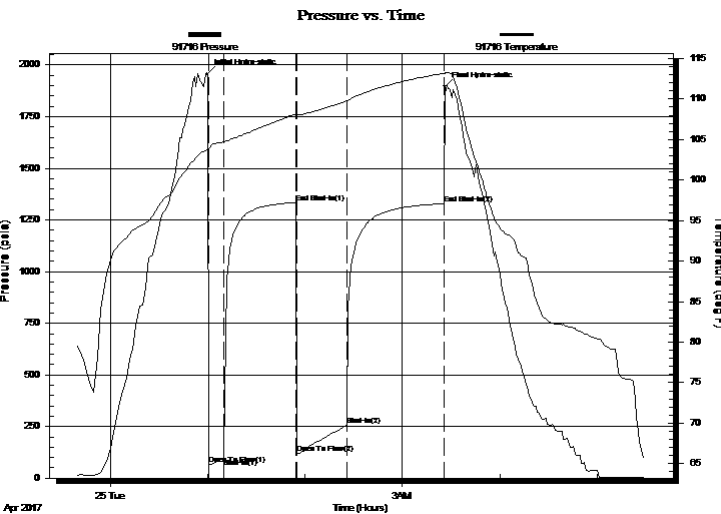
Time On Btm:

2017.04.25 @ 00:59:30

Time Off Btm:

2017.04.25 @ 03:26:00

TEST COMMENT: 1ST OPENING 10 MINUTES FAIR BLOW BOTTOM OF THE BUCKET IN 3 MINUTES
1ST SHUT-IN 45 MINUTES GOOD BLOW BACK
2ND OPENING 30 MINUTES FAIR BLOW BUILT TO THE BOTTOM OF THE BUCKET IN 4 MINUTES
2ND SHUT-IN 60 MINUTES GOOD BLOW BACK



PRESSURE SUMMARY

Time (Min.)	Pressure (psia)	Temp (deg F)	Annotation
0	1957.49	103.70	Initial Hydro-static
1	67.47	103.89	Open To Flow (1)
10	98.34	104.69	Shut-In(1)
55	1334.87	108.12	End Shut-In(1)
56	118.48	108.12	Open To Flow (2)
86	254.17	109.74	Shut-In(2)
146	1328.28	113.18	End Shut-In(2)
147	1896.23	113.20	Final Hydro-static

Recovery

Length (ft)	Description	Volume (bbl)
0.00	720 FEET OF GAS IN THE PIPE	0.00
560.00	CLEAN GASSY OIL	7.86
0.00	GRAVITY 41 CORRECTED	0.00
60.00	OIL AND GAS CUT MUD	0.84
0.00	5 GAS 25 OIL 70 MUD	0.00

Gas Rates

Choke (inches)	Pressure (psia)	Gas Rate (Mcf/d)



DRILL STEM TEST REPORT

TOOL DIAGRAM

YOIUNGER EMERGY COMPANY

27-21S-15W PAWNEE

9415 E HARRY SUITE 4035
WICHITAA, KANSAS 67207-

GEORGIANN BAUER 1-27

ATTN: KEITH REAVIS

Job Ticket: 01166

DST#: 2

Test Start: 2017.04.24 @ 22:17:00

Tool Information

Drill Pipe:	Length: 3859.00 ft	Diameter: 3.80 inches	Volume: 54.13 bbl	Tool Weight: 2000.00 lb
Heavy Wt. Pipe:	Length: 0.00 ft	Diameter: 0.00 inches	Volume: 0.00 bbl	Weight set on Packer: 20000.00 lb
Drill Collar:	Length: 0.00 ft	Diameter: 0.00 inches	Volume: 0.00 bbl	Weight to Pull Loose: 72000.00 lb
			<u>Total Volume: 54.13 bbl</u>	Tool Chased 0.00 ft
Drill Pipe Above KB:	15.00 ft			String Weight: Initial 56000.00 lb
Depth to Top Packer:	3873.00 ft			Final 58000.00 lb
Depth to Bottom Packer:	ft			
Interval between Packers:	11.00 ft			
Tool Length:	40.00 ft			
Number of Packers:	2	Diameter: 6.75 inches		

Tool Comments:

Tool Description

Tool Description	Length (ft)	Serial No.	Position	Depth (ft)	Accum. Lengths
Shut In Tool	5.00			3849.00	
Hydraulic tool	5.00			3854.00	
Jars	7.00			3861.00	
Safety Joint	2.00		Fluid	3863.00	
Top Packer	5.00			3868.00	
Packer	5.00			3873.00	29.00 Bottom Of Top Packer
Anchor	6.00			3879.00	
Recorder	0.00	9139	Inside	3879.00	
Recorder	0.00	91716	Outside	3879.00	
Bullnose	5.00			3884.00	11.00 Anchor Tool
Total Tool Length:	40.00				



DRILL STEM TEST REPORT

FLUID SUMMARY

YOIUNGER EMERGY COMPANY

27-21S-15W PAWNEE

9415 E HARRY SUITE 4035
WICHITAA, KANSAS 67207-

GEORGIANN BAUER 1-27

Job Ticket: 01166

DST#: 2

ATTN: KEITH REAVIS

Test Start: 2017.04.24 @ 22:17:00

Mud and Cushion Information

Mud Type: Gel Chem
Mud Weight: 9.00 lb/gal
Viscosity: 55.00 sec/qt
Water Loss: 8.00 in³
Resistivity: ohm.m
Salinity: 3000.00 ppm
Filter Cake: 1.00 inches

Cushion Type:
Cushion Length: ft
Cushion Volume: bbl
Gas Cushion Type:
Gas Cushion Pressure: psia

Oil API: deg API
Water Salinity: ppm

Recovery Information

Recovery Table

Length ft	Description	Volume bbl
0.00	720 FEET OF GAS IN THE PIPE	0.000
560.00	CLEAN GASSY OIL	7.855
0.00	GRAVITY 41 CORRECTED	0.000
60.00	OIL AND GAS CUT MUD	0.842
0.00	5 GAS 25 OIL 70 MUD	0.000

Total Length: 620.00 ft Total Volume: 8.697 bbl

Num Fluid Samples: 0

Num Gas Bombs: 0

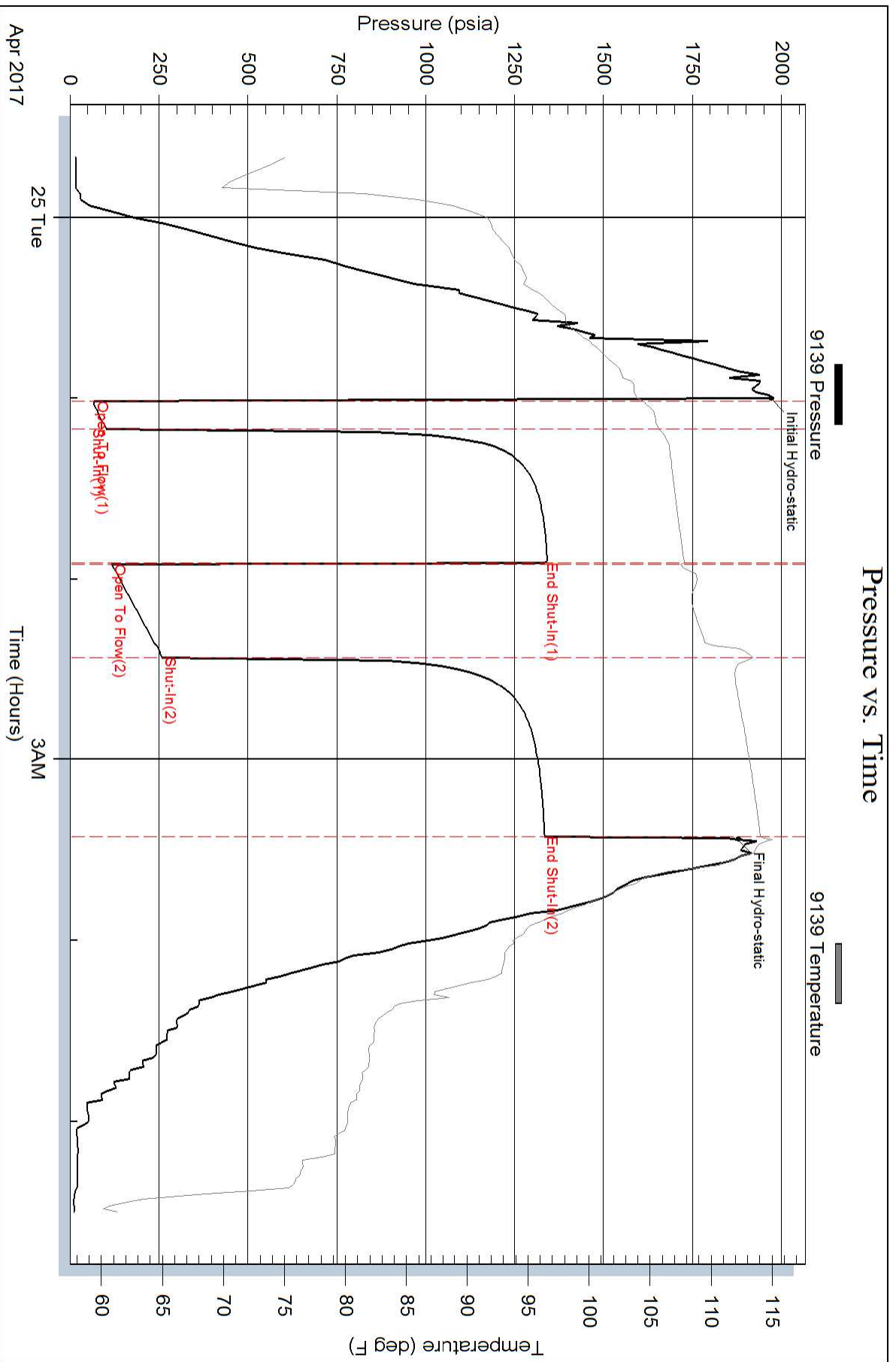
Serial #:

Laboratory Name:

Laboratory Location:

Recovery Comments:

Pressure vs. Time



Pressure vs. Time

