



Scale 1:240 Imperial

Well Name: Fairchild 2-14
Surface Location: 499' FSL_1804' FWL 8-28S-8W
Bottom Location: NE SW SE SW
API: 15-095-22306
License Number: 5004
Spud Date: 2/21/2017 Time: 8:15 PM
Region: Central KS
Drilling Completed: 3/4/2017 Time: 11:30 AM
Surface Coordinates: 499' FSL & 1804' FWL
Bottom Hole Coordinates:
Ground Elevation: 1609.00ft
K.B. Elevation: 1617.00ft
Logged Interval: 1300.00ft To: 0.00ft
Total Depth: 4525.00ft
Formation: Mississippian
Drilling Fluid Type: Chemical

OPERATOR

Company: Vincent Oil Corporation
Address: 200 W Douglas Ave
Wichita, KS 67202
Ste 725
Contact Geologist: Dick Jordan
Contact Phone Nbr: 316-262-3573
Well Name: Fairchild 2-14
Location: 499' FSL_1804' FWL 8-28S-8W API: 15-095-22306
Pool: Development Field: Garlisch
State: KS Country: Kingman

LOGGED BY

Company: Vincent Oil Corporation
Address: 200 W Douglas Ave
Wichita, KS 67202
Ste 725
Phone Nbr: 316-262-3573
Logged By: Geologist Name: Tom Dudgeon

CONTRACTOR

Contractor: Duke Drilling Co., Inc.
Rig #: 8
Rig Type: Rotary Double
Spud Date: 2/21/2017 Time: 8:15 PM
TD Date: 3/4/2017 Time: 11:30 AM
Rig Release: 3/5/2017 Time: 11:45 AM

SURFACE CO-ORDINATES

Well Type: Vertical
Longitude: 08 1656771
Latitude: 37 6050654

Longitude: -96.1656771
 N/S Co-ord: 499' FSL
 E/W Co-ord: 1804' FWL

Latitude: 37.6030634

ELEVATIONS

K.B. Elevation: 1617.00ft Ground Elevation: 1609.00ft
 K.B. to Ground: 8.00ft

TOTAL DEPTH

Measurement Type:	Measurement Depth:	TVD:
RTD	4525.00	4526.00
LTD	4526.00	4526.00

DRILLING FLUID SUMMARY

Type	Date	From Depth	To Depth
Chemical	2/22/2017	0.00ft	4526.00ft

OPEN HOLE LOGS

Logging Company: ELI
 Logging Engineer: Jeff Luebbers
 Truck #: 922339
 Logging Date: 3/4/2017 Time Spent: 7
 # Logs Run: 4 # Logs Run Successful: 4

LOGS RUN

Tool	Logged Interval	Logged Interval	Hours	Remarks	Run #
DI	0.00ft	4526.00ft	3.00		1
NEU/DEN/PE	1300.00ft	4526.00ft	3.00		1
Micro	1300.00ft	4526.00ft	4.00		2
Sonic	0.00ft	4526.00ft	4.00		2

LOGGING OPERATION SUMMARY

Date	From	To	Description Of Operation
2/24/2017	0.00ft	4526.00ft	Logs ran successfully

CASING SUMMARY

	Surface	Intermediate	Main		
Bit Size	12.25 in		7.88 in		
Hole Size	12.25 in		7.88 in		
	Size	Set At	Type	# of Joints	Drilled Out At
Surf Casing	8.625 in	302 ft	23#	7	2/22/2017 4:15 PM
Int Casing					
Prod Casing	5.5 in	4523 ft	14#	108	

CASING SEQUENCE

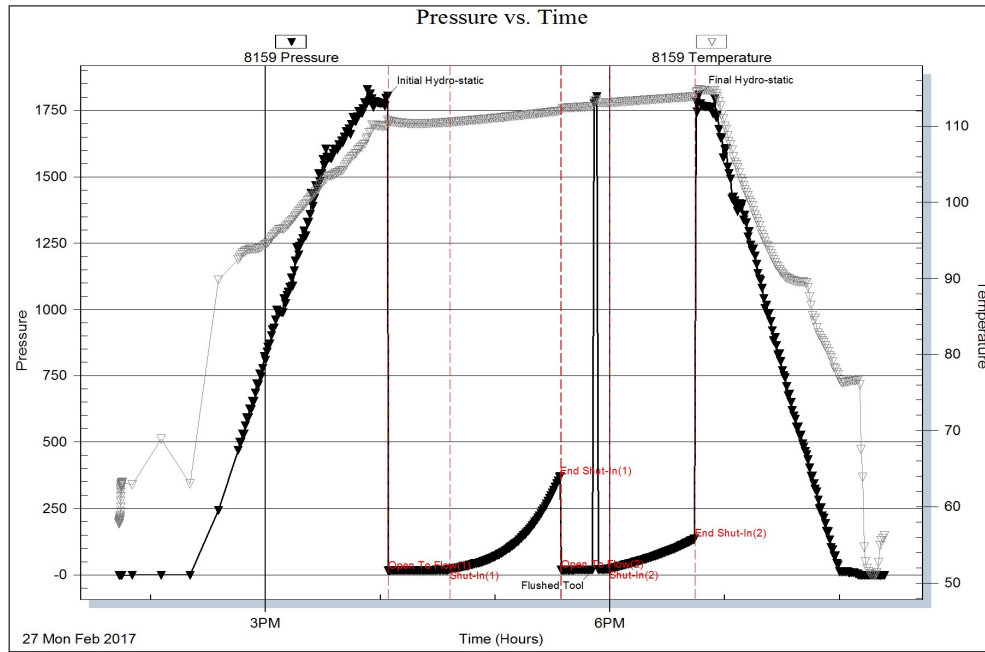
Type	Hole Size	Casing Size	At
Surface 23#	12.25 in	8.63	302.00 ft
Production 14#	7.88 in	5.50	4523.00 ft

NOTES

TOP	DEPTH	DATUM	STRUCT. +/-
B/Flor	1653	-36	6
Cottnwd	1855	-238	4
Onaga	2183	-566	7
Id Cv Sd	2208	-591	
Wab	2225	-608	4
Stot	2375	-758	4
Top	2764	-1147	3
Hbr	3161	-1544	-4
BL	3357	-1740	2
Lans	3368	-1751	1

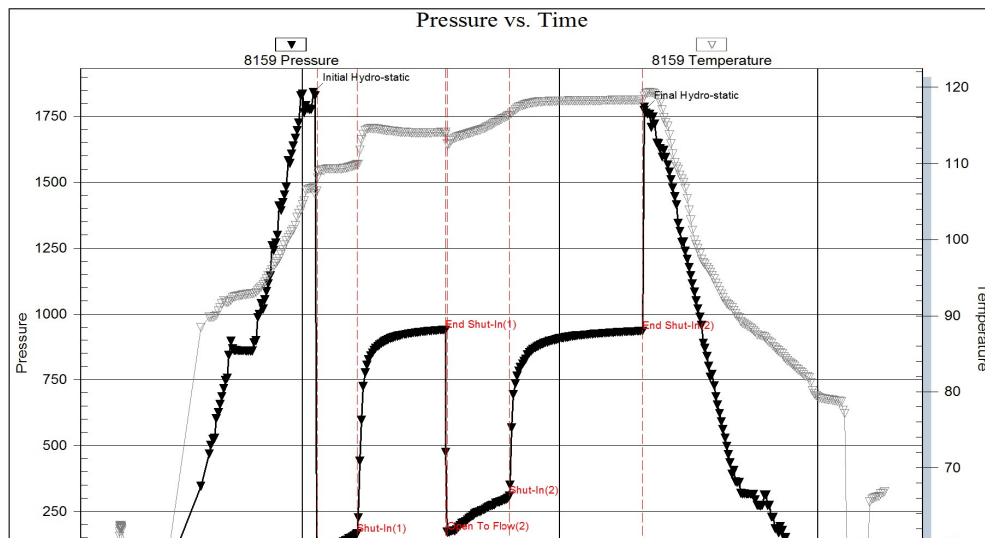
Stark	3700	-2083	9
Swope	3710	-2093	8
Hush	3741	-2124	9
Hertha	3474	-1857	10
Cher	3946	-2329	5
Miss	4041	-2424	6
Miss Lm	4151	-2534	-35
Kind*	4242	-2625	2
Vio*	4391	-2774	flat
Smp Sh*	4428	-2811	-1
Smp Sd*	4431	-2814	-3
*To Jones Tr. 1-23 NW NW 23-28S-8W			

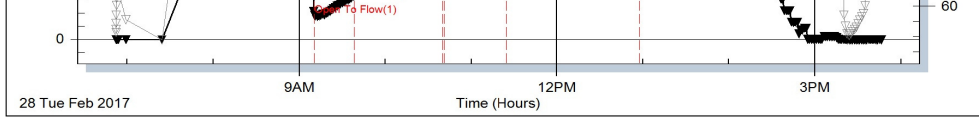
Serial #: 8159 Inside Vincent Oil Corporation Fairchild #2-14 DST Test Number: 1



Trilobite Testing, Inc Ref. No: 63567 Printed: 2017.03.06 @ 10:57:17

Serial #: 8159 Inside Vincent Oil Corporation Fairchild #2-14 DST Test Number: 2



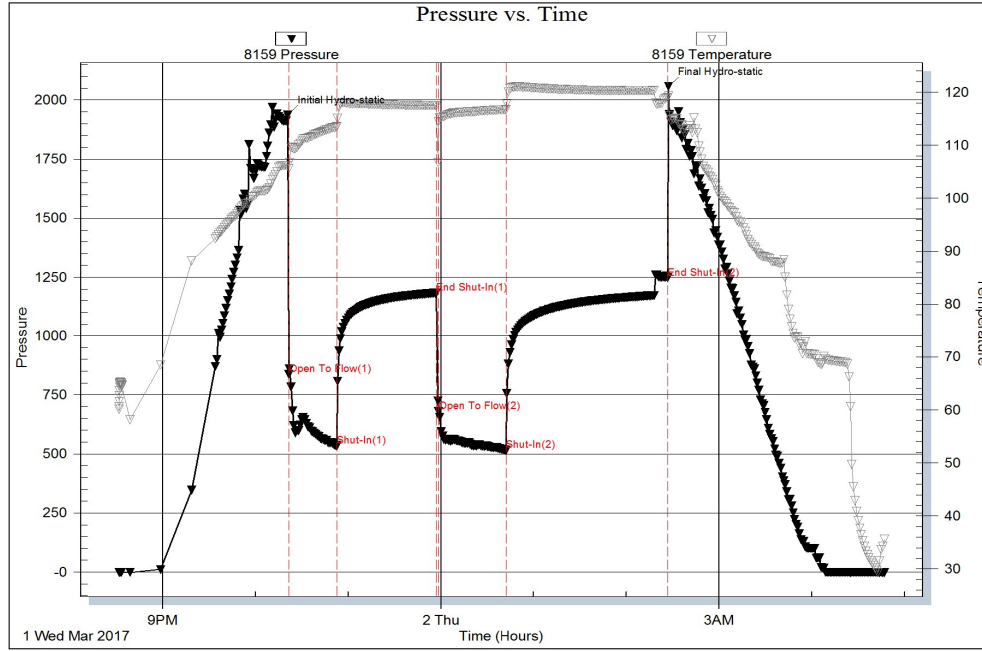


Trilobite Testing, Inc

Ref. No: 63568

Printed: 2017.03.06 @ 10:47:38

Serial #: 8159 Inside Vincent Oil Corporation Fairchild #2-14 DST Test Number: 3

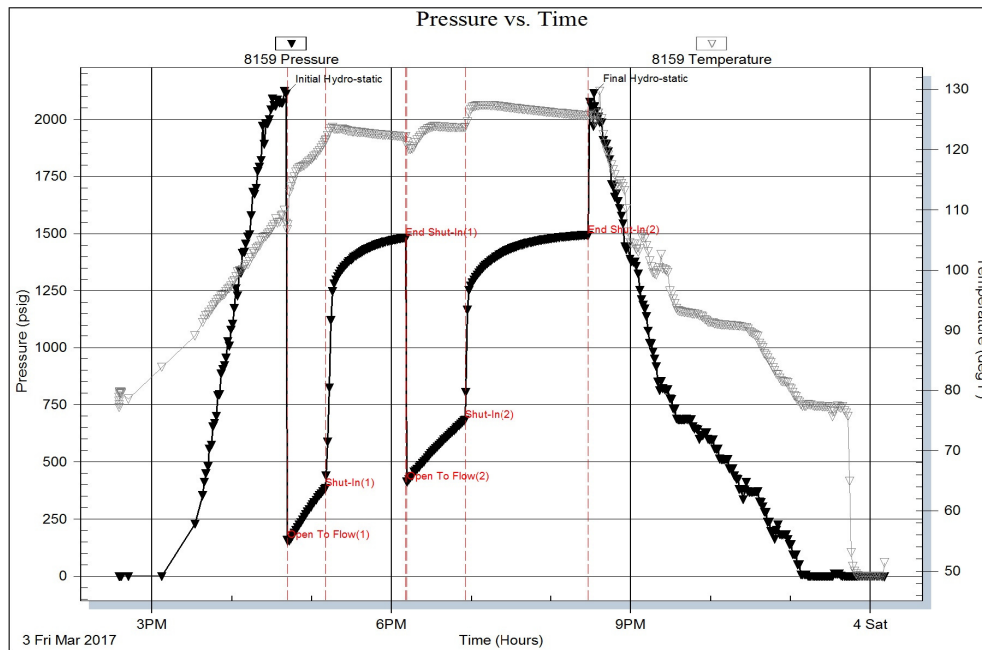


Trilobite Testing, Inc

Ref. No: 63569

Printed: 2017.03.06 @ 10:51:09

Serial #: 8159 Inside Vincent Oil Corporation Fairchild #2-14 DST Test Number: 4

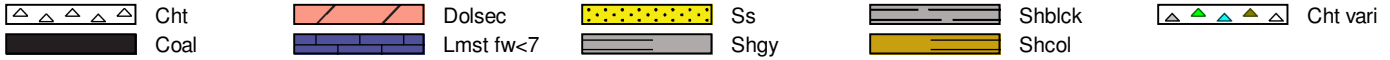


Trilobite Testing, Inc

Ref. No: 63570

Printed: 2017.03.06 @ 10:56:44

ROCK TYPES



ACCESSORIES

MINERAL

- ⊥ Calcareous
- Carbonaceous Flakes
- ▲ Chert, dark
- ∠ Dolomitic
- Ferruginous, grains or pr
- ∩ Glauconite
- Heavy, dark minerals
- P Pyrite
- Sandy
- Silty
- △ Chert White

FOSSIL

- ⌈ Bryozoa
- ∩ Coral
- F Fossils < 20%
- ϕ Oolite

STRINGER

- ▨ Sandstone
- ▨ Shale

TEXTURE

- C Chalky
- CX Cryptocrystalline
- e Earthy
- FX Finexln
- MX Microxln

OTHER SYMBOLS

POROSITY TYPE

- × Intercrystalline
- ϕ Interoolitic
- V Vuggy
- P Pinpoint
- ∠ Moldic
- O Organic
- F Fracture
- e Earthy
- Fenestral

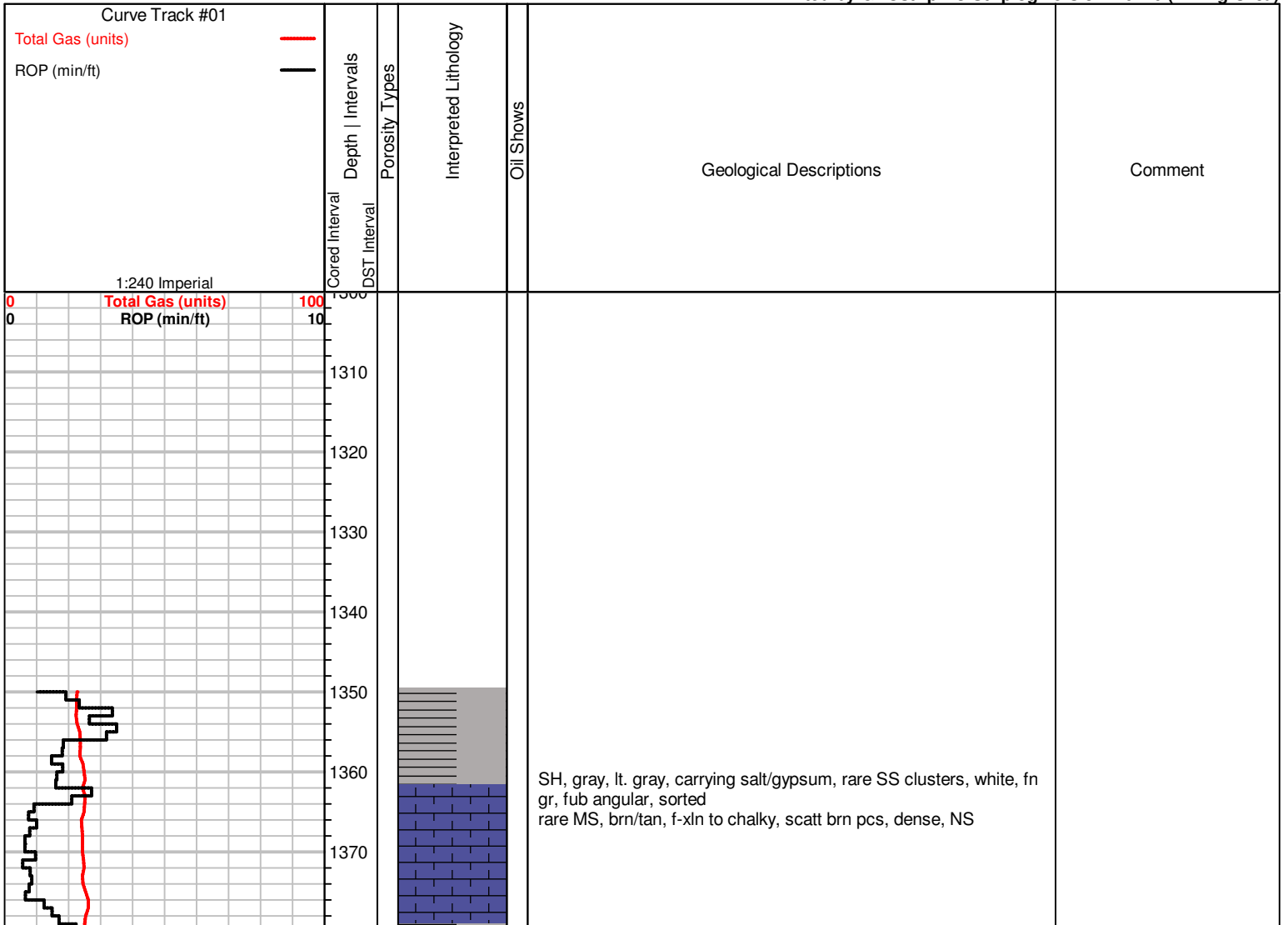
OIL SHOWS

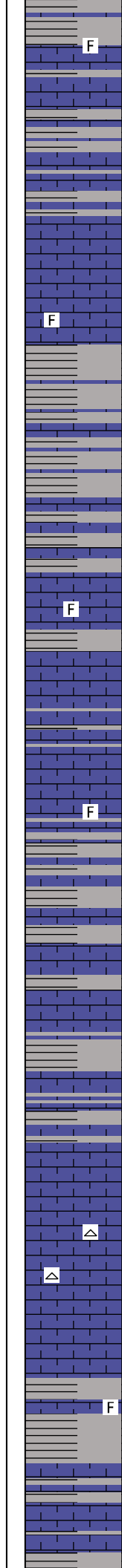
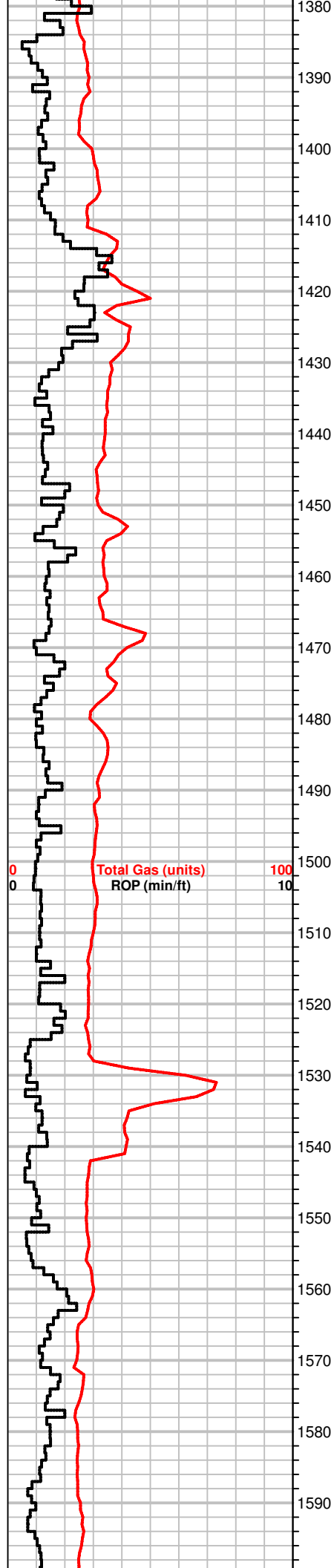
- Even Stn
- Spotted Stn 50 - 75 %
- Spotted Stn 25 - 50 %
- Spotted Stn 1 - 25 %
- Questionable Stn
- D Dead Oil Stn
- Fluorescence

INTERVALS

- Core
- DST

Printed by GEOstrip VC Striplog version 4.0.7.0 (www.grsi.ca)





SH, gray to lt. gray, scatt MS, gray, vf-xln, hard, scatt fossils, silty, barren, sulfur

SH, gray, some striated, brn, red
MS, crm to tan, gray, sli. fossilif., hard, scatt mottled pcs, NS

SH, grays, gypsum
rare calcite cemented WS, crm to tan, fossils

SH, dk. gray, grays
MS, gray, f-xln, firm, tite, NS

Scatt SH, grays, green, soft
MS, gray, firm, vf-xln, barren, sandy fossilif. pcs.

SH, gray, dk. gray
MS, tan to crm, gray, firm to hard, dull fluor, NS

MS-WS, crm, gray, vf-xln, scatt fossils, int-xln por., poor sample quality
SH, gray, green

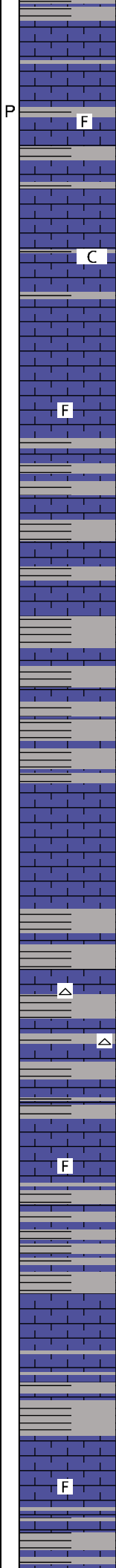
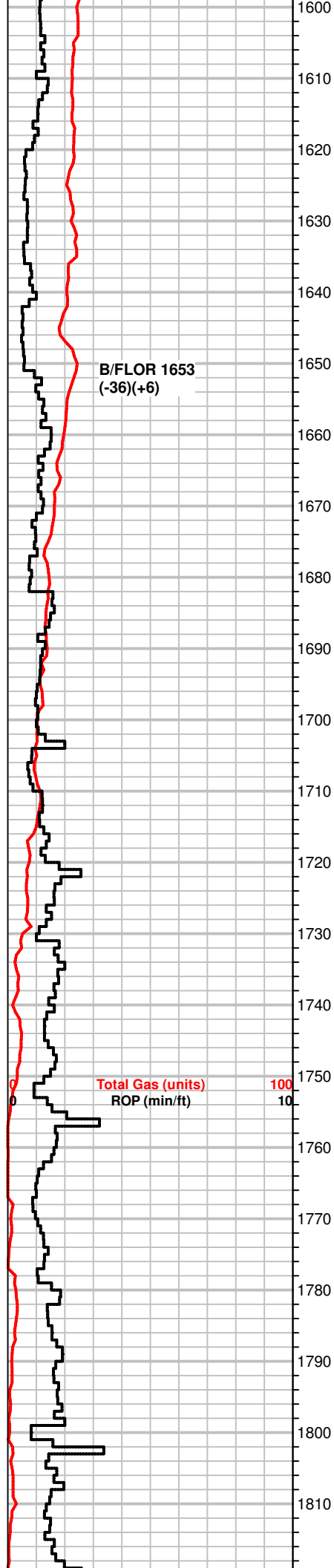
SH, brn, gray, red
MS-WS, crm to tan, vf-xln, NS

MS, crm to tan, vf-xln, scatt fossilif. to sandy pcs, no vis show, poor samples
SH, gray, green

MS-WS, A.A., rare white/milky Chert, platy

MS, lt. gray to crm, vf-xln, chalky pcs, hard to firm, sli. fossilif
SH, dk. gray, gray, limey

MS, gray lt. gray, tan, m-xln, firm to hard, sli. chalky, some SH, gray, NS



grays, NS

MS-WS, crm to off white, chalky to vf-xln, hard, shaly, scatt fossils, pp por.

MS, crm to lt. tan, chalky pcs, some shaly, fossilif., firm SH, gray, red

MS, tan to lt. gray, firm, vf-xln, scatt fossils, NS

MS, A.A, tan to gray, vf-xln, shaly, barren dry, NS Inc in SH, dk. gray, gray

Poor Samples Washed red SH, red, gray, dec. amt, MS A.A.

MS, gray, crm, vf-xln, firm, NS, SH, gray

Sh, red, gray, soft, MS, A.A., rare chert frgmts/ orange clear, sandy

Poor Samples, MS, crm to tan, f-xln to vf-xln, chalky txt, waxy pcs, scatt fossils SH, grays

SH, red, gray, MS, A.A., very poor samples

MS, crm, vf-xln, waxy, rare fossils, firm, scatt gray pcs, some SH, gray, red

MS, A.A, fossilif, SH, gray, dk. gray, red, green

B/F LOR 1653
(-36)(+6)

Total Gas (units) 100
ROP (min/ft) 10

P
F

C

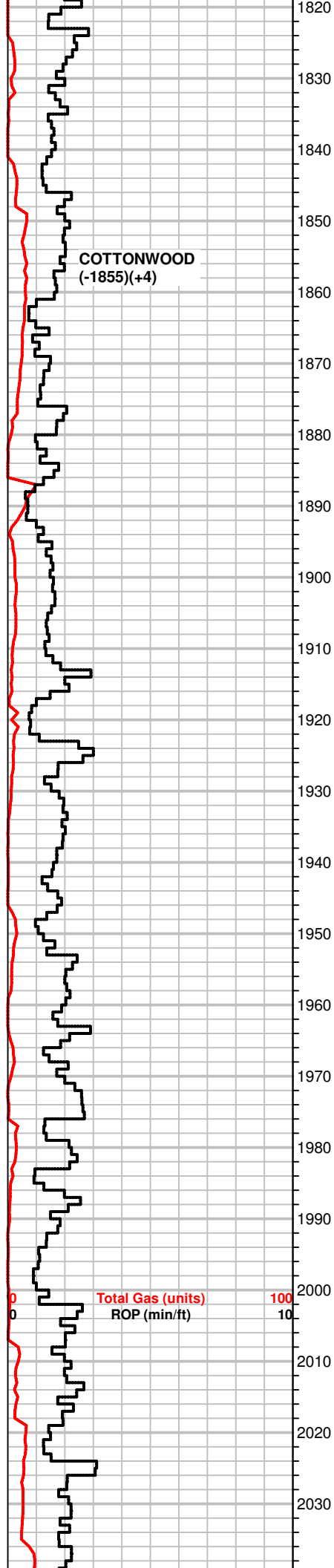
F

F

F

△

△



COTTONWOOD
(-1855)(+4)

Total Gas (units)
ROP (min/ft)

100
10

MS, A.A., fossilif., SH, gray, dk. gray, red, green

SH, A.A., inc amount
Scatt MS, off white to crm, f-xln, soft to firm, chalky in part, NS

Poor samples, SH, red, grays
MS, off white, tan to crm, rare Chert, gray

MS, scatt WS, crm, f-xln, fossils, sli. oolitic txt, glauc.

MS-WS, crm to tan, gray, f-xln, hard, brittle, scatt fossils, dull fluor, NS
SH, gray

MS-WS, off white to crm, fossilif. hard, A.A., scatt SH, gray.

MS-WS, crm to off white, brn, vf-xln, scatt fossils, firm to hard, crinoids
SH, gray, brn

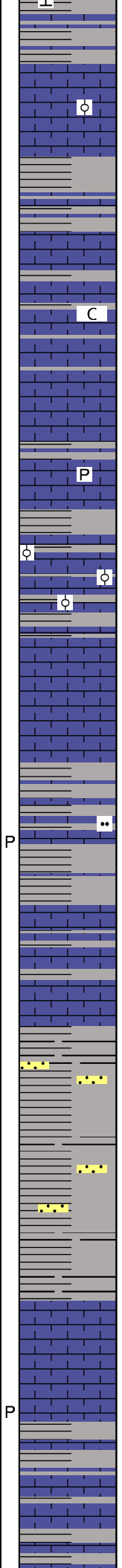
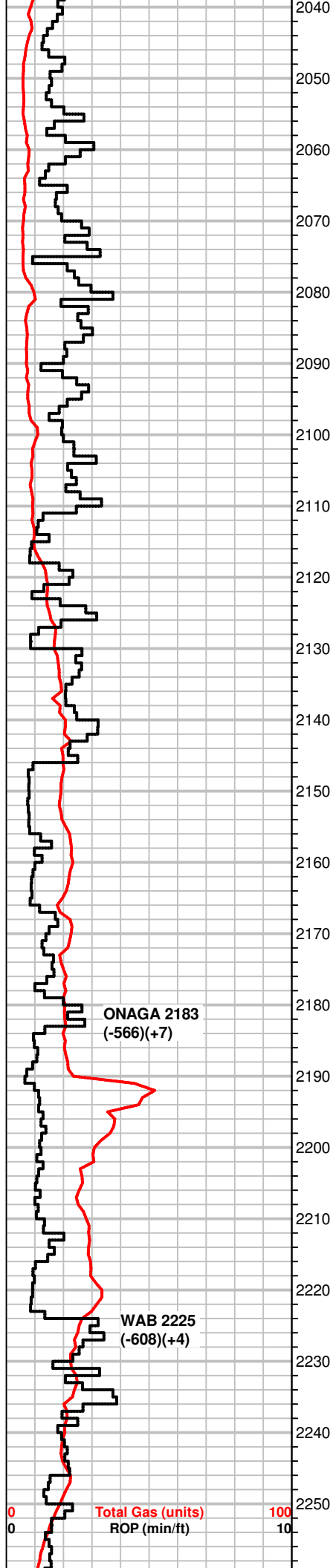
SH, red, gray, MS, crm to off white, vf-xln, A.A., inc in fossilif. pcs

MS-WS, crm to off white, mic-xln, lt.gray, hard, coral/fossilif., some waxy, shaly
SH, red, brn

MS, crm to tan, scatt brn, mic-xln, dense, fossilif., Cherty pcs, scatt sandy pcs
SH, dk. gray, red

Influx, SH, dk. gray, gray, scatt MS, A.A., f-gr oolitic/fossilif. pcs.

MS-WS, off white, crm, vf-xln, waxy looking, hard, fossilif. calcite



veins, SH, grays, dec. amt., some red

MS-WS, off white to crm, f to m-gr, oolitic, WS, crm/offwhite, hard, dense, some gray, f-xln, firm to brittle, NS

MS-WS, crm to gray, mic-xln, hard, fossilif., chalky pcs, most dense, NS

MS-WS, crm to gray, mic-xln, A.A., poor samples, scatt pyrite, some brn dense pcs, NS

WS-MS, crm to tan, f-xln, cahlky to dense, some soft pcs, fossili/m-gr oolitic in tite matrix, some gray
SH, gray

MS-WS, A.A., dec. amt of LS, some gray/brn
SH, gray

SH, grays
MS, crm to tan, f-xln frim to soft, sli. silty, some dense, rare pp por.

MS A.A., inc. in SH, grays, red, brn, green

SH, blk to gray, red, some sandy pcs, scatt sd grs, fn to co-gr, sub angular, sub rnded,

SH, gray, A.A.

MS-WS, crm to brn, hard, dense, silty in part, some pcs lt. gray, hard, fossilif.
SH, gray, maroon, pp por.

MS, crm to lt. gray, hard, dense, fossils A.A., scatt SH, gray, red

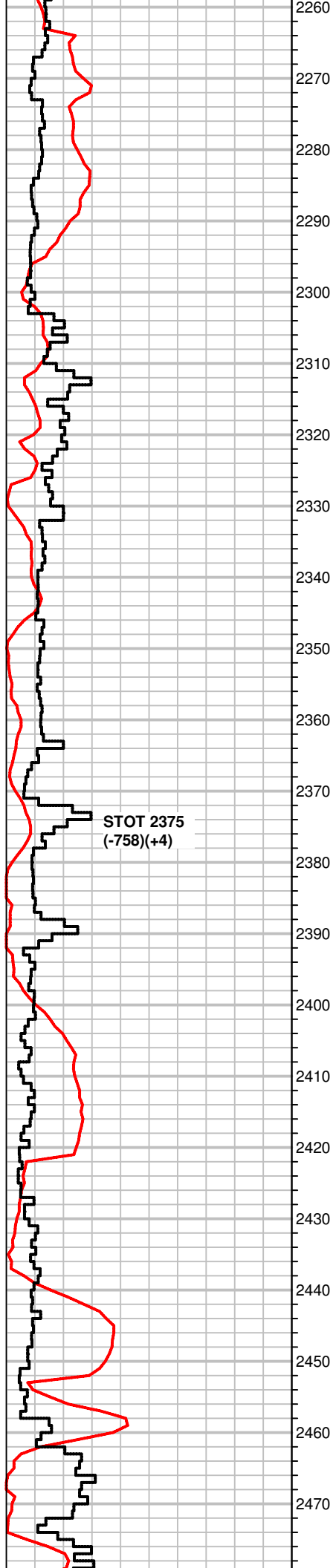
ONAGA 2183
(-566)(+7)

WAB 2225
(-608)(+4)

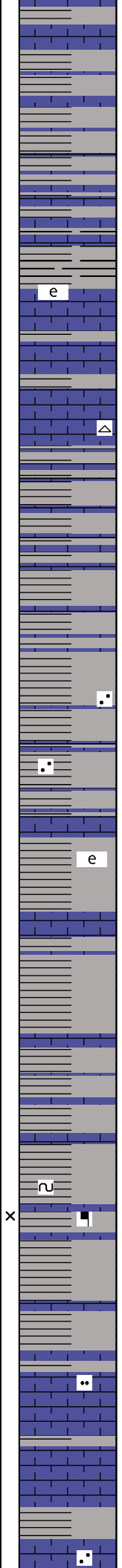
Total Gas (units)
ROP (min/ft)

0
0

100
10



STOT 2375
(-758)(+4)



MS, tan to crm, waxy, firm, chalky pcs, NS
inc. in SH, gray

SH, blk, dk. gray,
MS, tan, lt. gray, f-xln, chalky, hard to firm, waxy txt, NS

SH, gray, dk. grays, MS, crm to off white, f-xln, soft, firm, chalky,
fossils, Chert frgmts, NS

SH, grays, green,

SH, gray, dk. gray, waxy to silty in appnce., some sandy

MS, crm , vf-xln, massive to earthy txt,

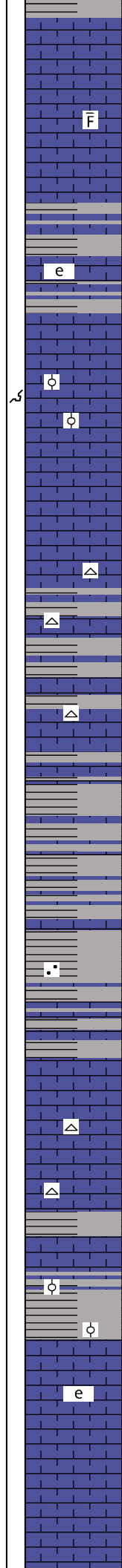
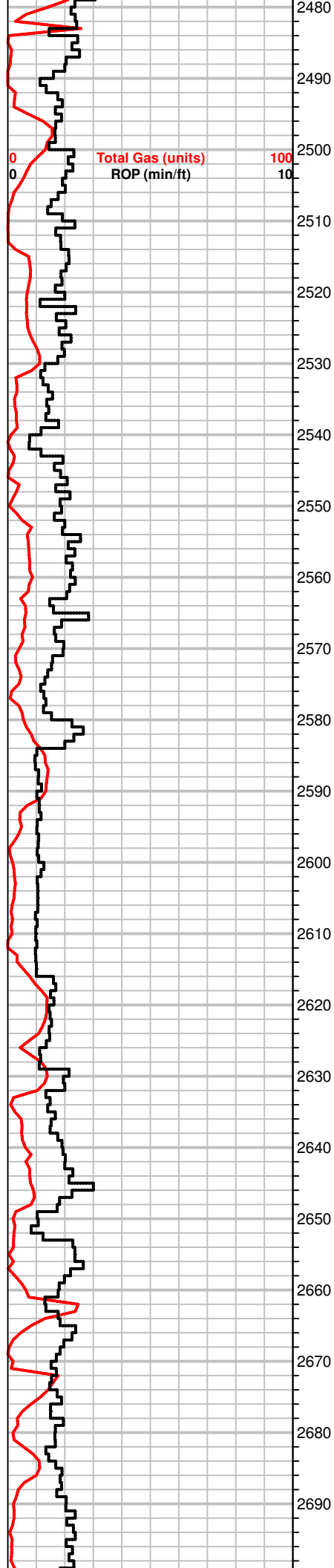
SH, gray, red, sandy to silty,
MS, brn to crm, vf-xln, massive txt, hard, NS

SH, gray, red, A.A.
rare MS, crm to brn, gray, hard, f-xln, dense, soft

SH, gray, red, sandy, SS clusters, gray, f to m-gr, sub ang, sub
rnded, sorted, dark mineral inclusions, glauc in-gr por.

MS-WS, crm to lt. tan, f-xln, hard, fossilif. silil. shaly pcs.

MS, crm to tan, f-xln, A.A., some SH, gray, sandy



MS, off white crm, waxy, firm to hard, chalky to dense fossils, stone gray, pyrite, SH, gray

F

SH, grays, lt gray, brn, MS, gray, tan, off white, earthy/ chalky, hard, dull flur, NS

e

MS AA, gray, to brn, firm, chalk pcs, fossilif, oomoldic, dk, gray barren modic por. elongated ooids and chalky matrix, , SH, grays, dark gray

○

○

WS-MS, tan to cream, mic/ f-xln, firm to hard/ brittle, fossilif dense, cherty pcs, oolitic- m-gr., dull fluor

△

△

MS-WS AA, some gray, gritty txt scatt fossil frgmts, cherty white, sh, brn, green, gray

△

WS- MS, gray, crm brn, mottled, hard, dense fossilif, mc/ f-xln , shaly/ sandy pcs, cherty, SH gray

WS, crm to tan, f-xln, fossil/ oohite, f-m-gr, SH, grays, sandy

•

MS-WS, crm brn, f-xln, earthy txt in part, fossil/ cherty frgmts, hard

△

△

SH gray, dk. gray MS, crm to tan, iff white, hard, f-xlm, earthy, fossilif, sub oolitic pcs

○

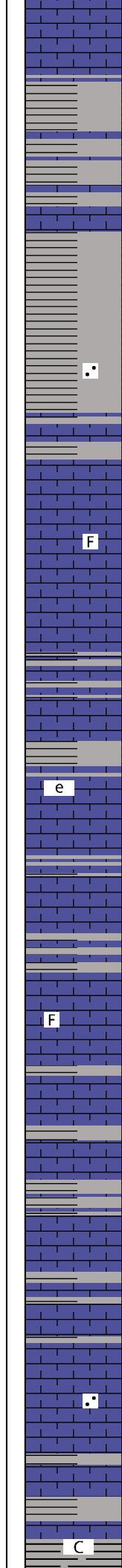
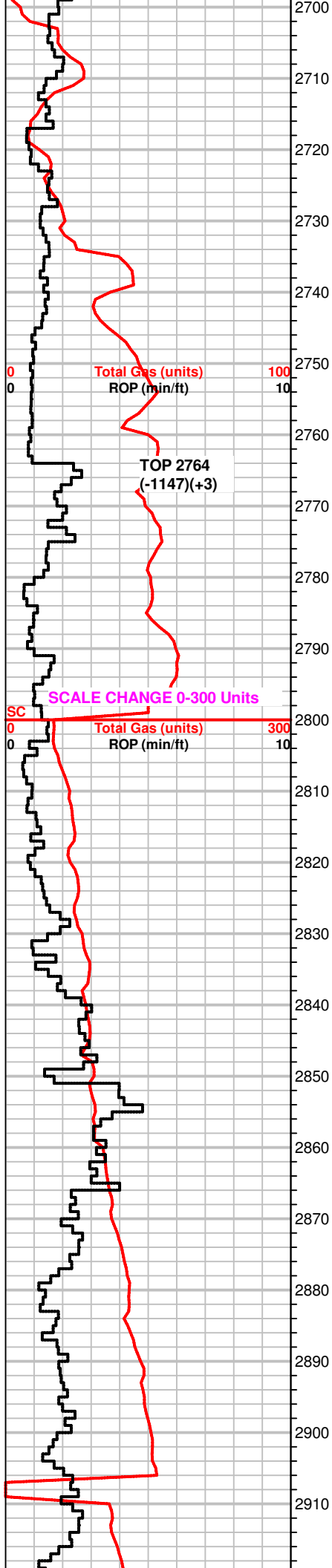
○

e

MS- WS, crm to tan, f-xln to m-xln, chalky in part, soft to dense, scatt fossilif psc, NS

Mud-CO Mud check
31 vis
9.3#
trc LCM
26000ppm/CL

MS- WS AA, inc in gray, vf- gr- pcs, scatt SH, gray, greenish gray



MS- WS AA, inc in gray vf-gr pcs, scatt SH, gray, greenish gray, dull fluor, NS

Inc SH, dk. gray MS, off wht. to crm., vf- xln, dense, massive NS , baren

MS- WS AA, SH, dk gray, gray

Scatt SH AA sandy pcs MS. gray to tan, f- xln, hard, sandy pcs, scatt cherty frgmnts

MS brn to crm AA, SH, gray(s) fossil frgmnts

Scatt SH, gray MS, gray to off white, gritty, hard fossils, influx

MS, off white to crm., gray, f-xln. hard to firm, earthy, dull fluor, some pcs chalky

MS crm to off white, brn. vf- vh, some chalky, hard, baren fossil pcs, gritty pcs

MS- WS AA, white pcs, oolitic WS, SH grays

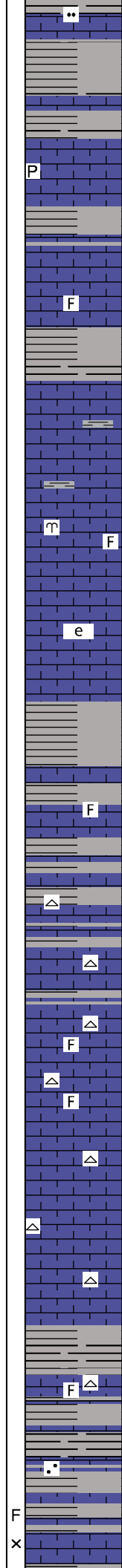
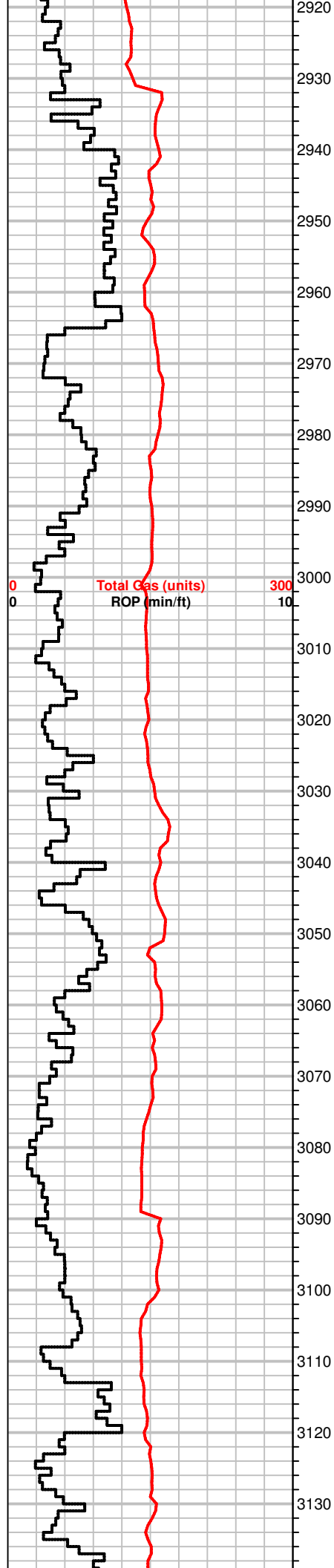
Influx, SH drk gray, gray, MS- WS gray to crm, m-xln, co gr - frgmnts

SH, greenish gray, gray, MS- gray, vf-gr, sandy, gritty txt.

SH , drk gray, gray, blk. WS- MS, crm. to tan, chalky, girtty txt, NS

29 vis
9.3#

29 vis
9.3#



MS- WS, crm, brn, f-xln, chalky to dense, NS, pyrite, SH, grays, brn

MS- WS, crm to tan, mic- vf- xln, dense, hard, fossils scatt, some SH, dk gray, grays

MS, crm to lt. tan, lt. green, AA, SH, brn, gray, red , brittle pcs, bryozoans

MS, crm to lt. tan, lt. greenish gray, brittle, hard ,dense pcs, fossils scatt, bryozoans, carrying SH, dk. gray, green

MS, crm to brn, f-xln, earthy txt, hard, NS SH, dk. gray(s)

MS-WS, crm to gray, tan, f-xln, mottled pcs, scatt fossils, chalky in part, NS SH, gray, dk. gray, platy

MS, crm, f-xln, dense, NS, Chert, wht, blocky, scatt fossils

MS, crm to gray, vf-xln, dense, hard, scatt Chert, white, scatt fossilif pcs SH, grays, red, green

Inc, in MS-WS, A.A. scatt oolitic pcs, sandy in part, Chert, white, blocky

MS, crm to lt. gray, vf-xln, chalky, firm, Chert, white, fossils, NS scatt SH, grays

MS, crm to tan, f-xln, chalky, NS Chert, white, blocky

MS-WS, crm to off white, f-xln, some pcs hard, dense, fossils, Chert, white, fresh to tripolitic txt, fossils

SH, dk. gray, gray, red, brn MS, crm to tan, f-xln, firm, brittle, fossil frgmts, Chert, white, A.A.

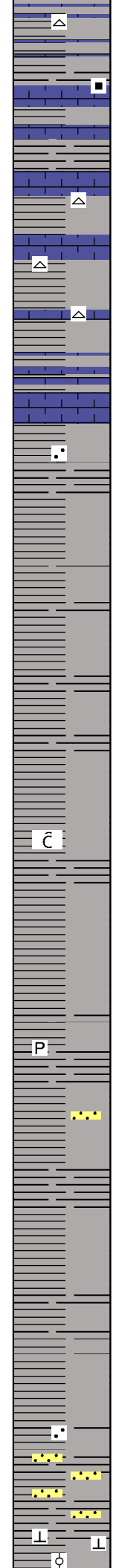
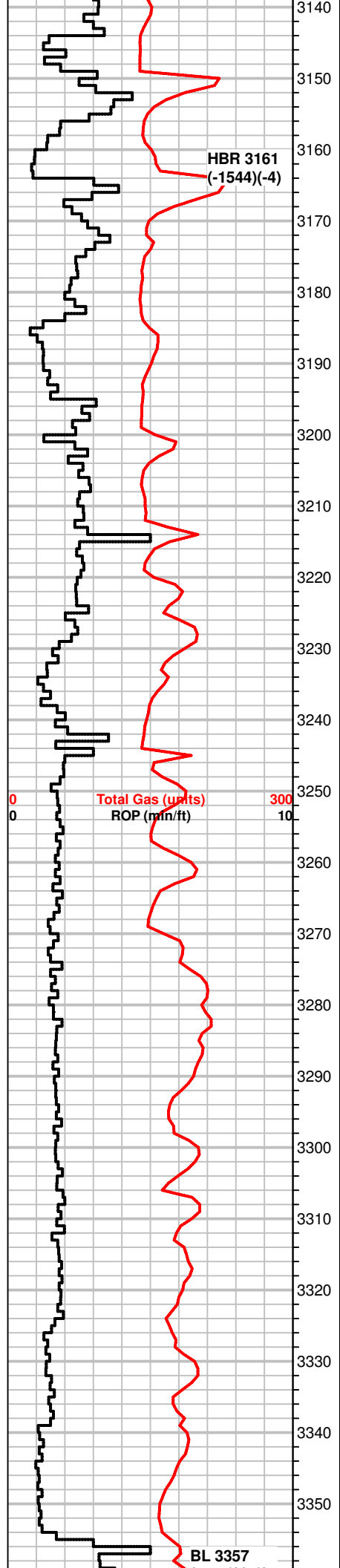
SH, dk. gray, gray green, red MS-WS, crm, f-xln, chalky/sandy matrix, some silty, soft, NS

SH, blk, dk. gray, gray,(sli. dec. amt.), MS, crm, f-xln, chalky, soft, scatt minerals, sandy, fossils, NS

30 vis
9.4#

Jet #2, suction
Start Mud Displacement
@ 3090

Jet #1



MS, crm to lt. tan, f-xln to chalky, sort, scatt sandy pcs, rare mineral specs, Chert, white, some SH, dk. gray, gray, green

SH, gray, dk. gray, scatt carbonaceous pcs, MS, crm to lt. gray, chalky to sandy pcs, f-xln, firm, scatt fossils, NS

SH, blk, gray, carb. gassy

MS-WS, lt. gray to lt. brn, vf-xln to m-xl, chalky to sandy, dense massive pcs scatt, Qtz frgmts, orange, clear, rounded

SH, blk, dk. gray, carb. Scatt MS, A.A.

WS-MS, brn to gray, crm, vf-xln to earthy, shaly, dense to hard, fossils, some sandy pcs, Chert, white
SH, blk, grays sli. carb.

MS-WS, crm to gray, f-xln to chalky, waxy pcs, scatt fossils in chalky matrix, firm, calcite, NS

Sh, dk to lt. gray, brownish-gray, sandy in part

SH, A.A., soft

SH, gran to brn, vf-sandy to silty pcs

SH, dk. gray, grays, some sandy pcs, platy, scatt MS (cave?)

SH, lt. gray, silty, hard, some pcs limey, NS

SH, gray, brn, hard, MS, crm, chalky, soft (cave?)

SH, A.A., some silty, soft to hard pcs, chalky

SH, grays, silty, carry MS, crm to tan, hard, f-xln to chalk, fossilif., NS

SH, grays, silty, A.A., poor samples.

SH. lt. grays, silty, soft, pyrite.

SH, Grays, silty to sandy, soft to firm, ss cluster, gray, f-gr, sorted, subrounded

SH AA inc in MS- WS, crm to tan, earthy in part, hard, folssilif, NS

SH, grays, soft to firm

SH, grays, sandy firm to soft friable striated pcs scatt MS, brown to tan, f-xln, dense, scatt fossils

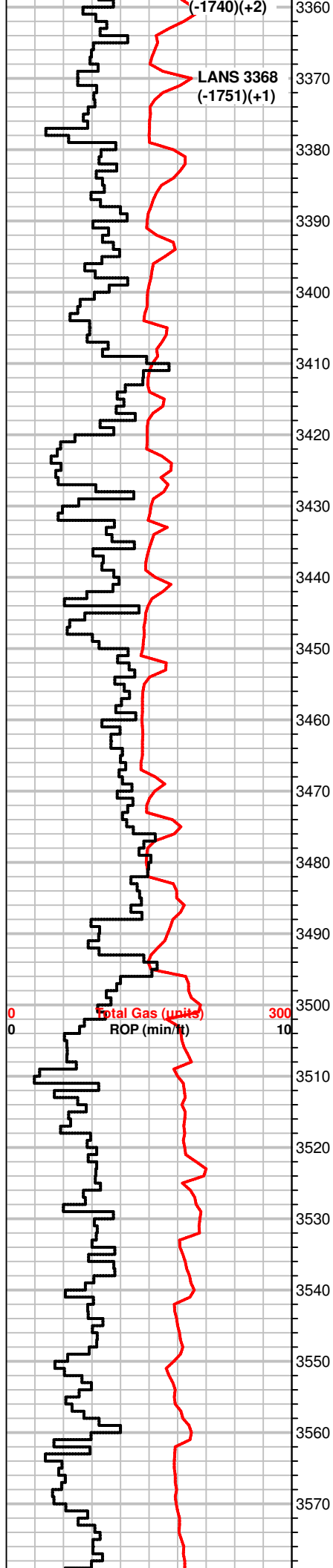
SH, gray, AA, silty, MS, crm, f-xln, chalky, some hard pcs, NS

SH, dk. to lt gray, silty, sand pcs rare, f-gr, sorted, sub ang. Friable, pyrite

SH, A.A., scatt MS- WS, brn f-xln, chalky, txt, firm, oolitic to fossilif, dense brn pcs

Mud-CO mud check
VIS 62
Wt 8.6#
1# LCM
CI 4000ppm
Filtrate 7.2

62
8.6#
1# LCM



LANS 3368
(-1751)(+1)

Total Gas (units)
ROP (min/ft)

dense brn pcs

MS, brn, f-xln, dense, hard, scatterd sub-oolitic pcs, lt brn, tan, chert, brn, fossilif

SH, blk to brn,

WS-PS, off white to crm, vf-gr oolitic in chalky matrix, some fossilif. dense pcs, NS

MS-WS, scatt PS, crm to gray, vf-xln, dense, fossilif.(coral, brachs), Chert frmmts, crm

Scatt SH, gray, silty

MS-WS, crm to brn, f-xln to mic-xln, dense, some suboolitic vf-gr., fossilif., Chert frmmts, white to crm., NS

MS, crm to tan, f-xln to mic-xln, firm, fractured, fossils, some chalky, soft, scatt sandy pcs., NS

MS, A.A., influx, lt. gray MS, rare mottled pcs, f-xln, firm, scatt SH, gray

MS, crm to gray, f-xln, massive txt, hard, brittle, Chert, brn, rare Qtz, co-gr, rnded, NS

MS, crm to off white, f-xln, some massive/dense pcs, friable, chalky in part, some calcite, Chert, brn

MS-WS, crm, lt. tan, gray, f to m-xln, dense, some sandy, suboolitic/fossilif. pcs, dull fluor NS rare SH, dk. gray

SH, gray, red, brn-bad sample quality
MS, crm to brn, f-xln, firm to hard, some fossils, chert frmmts, crm to brn

MS, brn to crm, mic to f-xln, dense to brittle, fossils
SH, dk. gray, gray, silty, pyrite

MS, crm to brn, f-xln, some earthy, soft to dense, scatt. fossils, sli. chalky pcs, SH, dk. gray, gray

MS, crm to brn, mic- xlm to f-xln, waxy looking pcs, dense scatt fossils, scatt SH dk grays

SH, dk gray, silty, MS, crm to brn, AA, some gray, shaly, hard, NS

SH, grays, rare blk, some green sandy, MS- WS, crm to gray, f-xln, chalky/ silty fossils, gritty txt, firm, chert brn, blocky

SHs, gray, (carrying?), MS, crm to brn, vf- xln, mic- xln, dense, scatt fossils, rare chert, brn, fossilif, platy

SH, dk gray to gray, green, silty, MS, crm to gray, f-xlm, dense to firm, sli sandy, ss clusters, blocky, gray, hard tite, f-gr

MS- WS, crm, f-xln, some dense/ massive txt, firm, NS, SH AA pyrite rare

Carrying SH, red, gray, blk green, silty, MS- WS, crm to tan, f-xln, sub-oolitic, firm to dense, scatt sandy pcs, NS

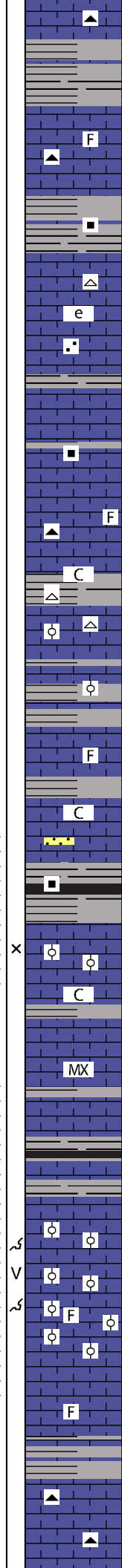
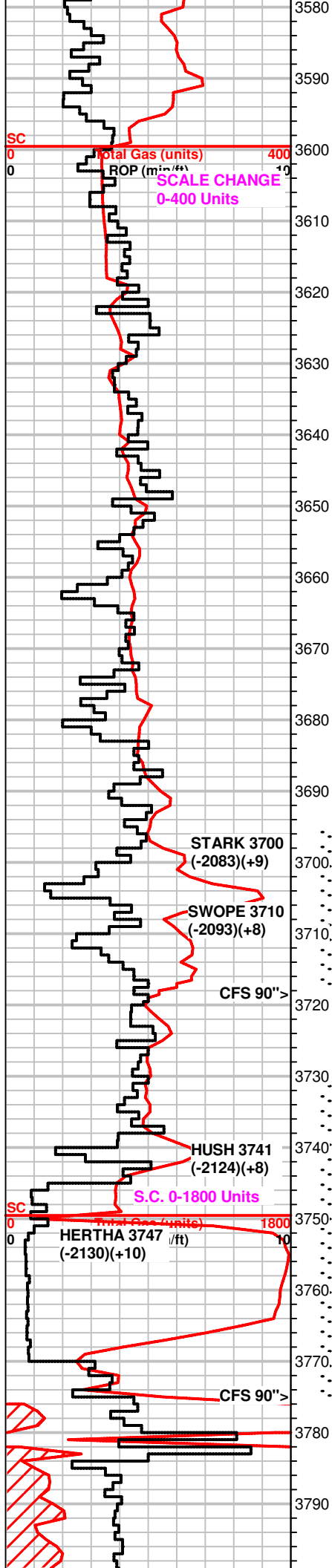
SH, gray, brnsih, some blk, sli carb, MS brn to crm, vf-xln dense

WS- MS, crm to brn, f-xln, dense, fossils/ chertv frmmts, hard, NS.

VIS 51
Wt. 8.7#
2# LCM

VIS 49
Wt. 8.7#
2# LCM

VIS 50
Wt. 8.9#
2# LCM



SH, gray, red, fissile

SH, blk, gray, MS, crm to tan, f-xln, firm, NS

MS, crm to lt.gray, f-xln, firm, friable, fossils scatt, Chert, brn, fossilif, scatt SH, blk, grays

MS, gray to crm, vf-mic-xln, soft, brittle
SH, blk, gray pyrite, carb.

MS, crm to gray/brn, f-xln, earthy to chalky, Chert, white, dec. in SH, grays, green

MS, A.A., mostly crm, firm to brittle, chalky pcs scatt, rare brn sandy pcs, rare mineral fluor, NS

MS, gray to crm, f-xln to earthy, chalky to silty pcs, pyrite, firm, rare SH, blk, gray, pyrite, sli. carb.

MS, lt. gray to crm, f-xln, most hard, dense, some sli. chalky, soft, cherty and fossil frgmnts, rare mineral fluor, NS

SH, gray, brn, dk. gray, MS-WS, crm to brn, some gray, f-xln, dense to chalky suboolitic pcs, calcite, fractured, Chert, white

Scatt SH, A.A., MS, lt. brn to crm, f-xln to m-xln, dense, hard, rare ooids in a tite mtrx., NS

SH, blk gass (sli), brn to gray, pyrite, striated, some sitly MS AA, crm to brn, dense, fossils

Dec, SH, AA, MS, crm f- xln, mosly dense, some chalky, rare ss cluser, f-gr, sorted, rnded, frioble but firm

SH, gray, dk gray, rare sandy, MS, crm f-xlnm frim to dense, scatt fossilif pcs, sliodor in bag rare mineral fluor

Influx SH, dk gray/ gray, carb to silty, MS-WS, crm to brn, mic xln dense to f- xln, suboolitic, fossils in chalk, firm matrix

MS/ WS, crm to f-xln tite scatt suboolitic pcs, some fossils, v. rare spotty fluor, faint odor, 1 drop F.O., very light resid. cut

MS, crm to gray, f-xln, chalky pcs rare, dense, rare fossils, dull fluor, NS

MS, brn to gray, mic-xln, dense, hard, barren NS
scatt SH, grays

MS, gray to brn, tan, mic to f-xln, hard, dense, NS

SH, blk, gray, MS, crm to brn, vf-xln, hard to brittle, some calcite xtals, faint odor

MS-WS/PS, brn, tan, m to f-xln, oolitic, m-gr, good odor, live oil droplets in tray, bleeding gas, spotty bright fluor, inst. cut, select pcs, brn stn spotty, moldic/vuggy por.

30"-PS, brn to tan, f-xln, m-gr. oolitic, firm, brittle, strong odor, bubbling gas, oil droplets in tray, bright fluor, some w/ mineral fluor, inst cut from bright pcs, slow to no cut from mineral fluor(dead stn?), some pcs sat. with brn oil stn, moldic por., sli. dec. shows in 60" bag, diminishing returns

MS- WS, crm to gray, f-xln, hard, dense, fossilif (frgmnts), carying show from above

MS- WS, brn to crm, f-xln, sli chalky, cherty, blk, fossilif, scatt SH, drk gray .gray

VIS 45
Wt. 9.0
2# LCM

DST #1 3695-3718
Swope Lm.
30-60-20-45
WB 1/2"
NBB
WB surf, died/7" flushed tool, NB
NBB
Rec: 5' Mud
IH 1805#
IF 15-20#
ISIP 370#
FF 18-22#
FSIP 136#
FH 1807#
Temp 115°F

VIS 45
Wt. 9.1#
2# LCM

+161 UGK, shale gas

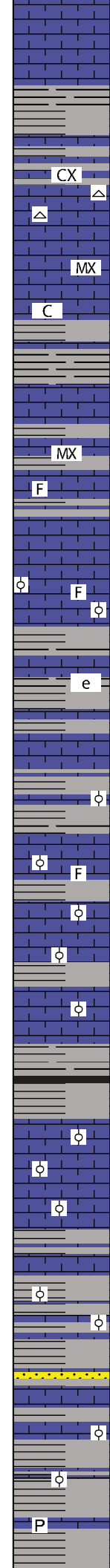
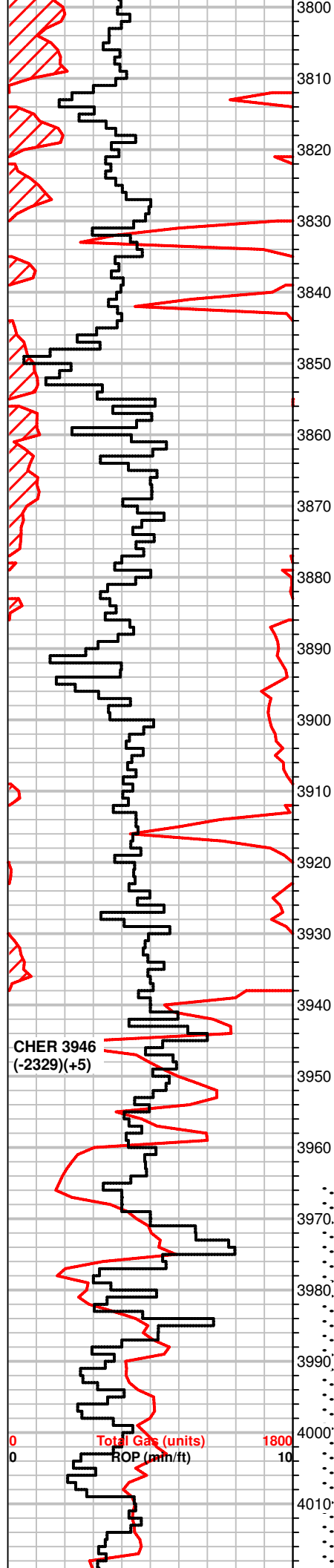
+67 UGK, 52 UGK recycle

+70 UGK, shale gas

+1582 UGK, 796 UGK recycle

Mud-CO mud check @ 3775
Vis 53
Wt 9.2#
2# LCM
4000ppm Cl

DST #2 3730-3775
Hertha Lm.
30-60-45-90
SB, BOB/30sec GTS/13"
GA 1/8th inch choke
9 MCF/20"



MS, gray, mic- f- xln, dense, some AA, SH gray, fissile, sandy pcs rare, green

SH dk gray, gray, MS, crm to gray, mottled pcs rare ,f- xln, hard to firm, some brittle

MS, crm, some gray, mic- xln/ crp-xln, dense, massive looking, some gray SH, cherty,crm to tan

MS- WS, off wht to crm, mic- xln, dense, oolitic/ fossilif, tite matrix, some pcs shaly, dull fluor, NS

MS, crm to lit gray, f-xln, chalky to dense, dull fluor, NS, scatt SH, gray

MS, lt gray to crm, f-xln, dense, NS

MS, off wht to crm, scatt gray, f-xln to mic xln, massive, dense, scatt fossils, dull fluor, NS

MS- WS, lt brn to lt gray, f-xln, firm to brittle, some pcs fossil/ oolitic, mineral fluor, NS

Scatt SH, grays, green, maroon, MS- WS, crm to gray mf-xln, suboolitic, frim to dense, NS

SH, blk , gray, green, MS gray, rare crm, f-xln, earthy pcs, tite, scatt, suboolitic pcs, NS

MS, crm to brn, f-xln, firm to dense, NS
SH, grays

MS-WS, crm, vf-xln to mic-xln, dense, some pcs sub oolitic lesser SH, blk, grays, greenish gray

MS-WS, crm to lt. gray, vf-xln, gritty txt in ~50% pcs, vf-gr oolites in soft chalky matrix, some pcs dense, dull fluor, NS
scatt SH, gray, green

MS-WS, dk.gray to lt. tan, m-xln, gritty txt(silty), m-gr oolitic in tite dense matrix, fossils, SH, gray, limey to silty

MS-WS, gray to lt. brn, f-xln, hard, brittle, some sli. chalky, fossils, shaly pcs scatt., NS
SH, dk.gray to gray,

SH, rare blk, grays, silty, green, sandy in part
MS, crm, mic-xln, dense, scatt vf-gr oolitic pcs, fossilif., calcite, dull mineral fluor, NS

MS, crm, brn, gray, f-xln, firm, shaly/chalky pcs to tite dnese pcs, dull fluor, NS
SH, blk, grays, striated, scatt pyrite

MS- WS, crm to tan, some gray, f-xln to massive, hard to firm, moist dense, scatt gritty, f-gr oolitic pcs, sli chalky, some shaly pcs, SH, dk gray, gray silty

MS, gray to crm, mic- xln, some pcs wavy to earthy looking, fossils rare, dense, hard, dull fluor, NS

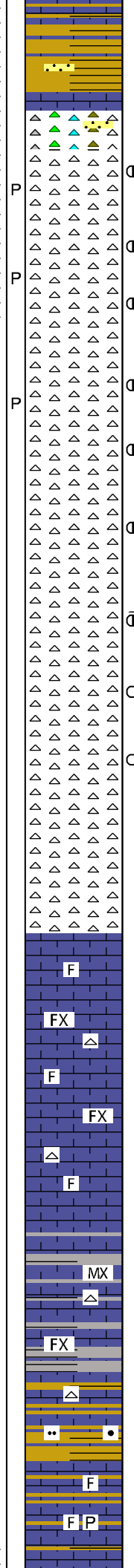
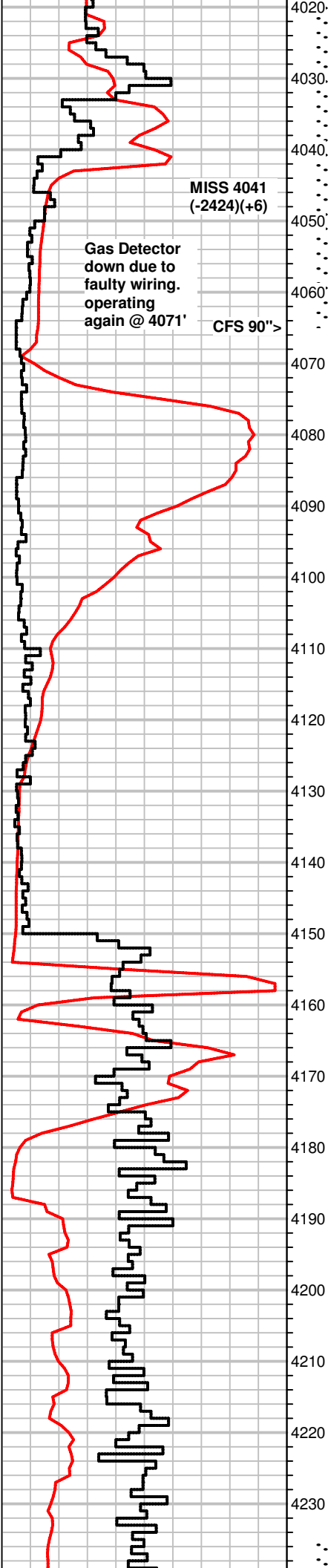
MS lt gray to crm, scatt brn, f-xln, fossils, most pcs dense, SH grays, green fossils, rare Qtz grs, f to co gr, sub- rounded to sub ang., some frosty

Scatt SH blk, gray, MS- WS, crm to gray, f-xln to gritty, some fossilif, m-gr oolistic dense matrix, NS

SH, grays, some mustard yellow, green, maroon, striated, scatt fossil frgmts, pyrite
MS, crm to brn, f-xln, dense, scatt suboolitic pcs, rare fossils

10 MCF/25"
12 MCF/30"
4" BB
SB BOB 45/sec
GTS/immed
GA 1/8th inch choke
8 MCF/10"
10 MCF/20"
11 MCF/30"
12 MCF/40"
12 MCF/45"
BB Built to BOB/20"
2926' GIP
Rec: 787' Total Fluid
535' Gsy O (20g,80o)
252' GMWCO (30g,
40o,20w,10m)
IH 1840#
IF 91-164#
ISIP 936#
FF 172-308#
FSIP 935#
FH 1773#
Temp 114°F
API gravity 41.3
Rw .13 @ 63°F
CI 66,000 ppm

Bloodhound Computer screen quit working, Data is up on the website currently!!



SH, gray, green, fissile, MS, crm to brn, lt. green, dense to soft shaly, some fossils, NS, rare min fluor

SH, varicolored brn, mustrd. yellow, green, maroon, gray, some pcs sandy, vf-gr. silty, rare SS clusters, vf-gr sorted soft

Chert, varicolored, yellow, white, green, scatt fossils, NS, rare WS, brn, mic-xln, dense, fossilif, oolitic, rare SS, wt., sorted, vf-gr.

Chert, white to off white, varicolored, very faint odor, some weathered(50% of chert)fresh, some white wthrd pcs with very spotty stn

Chert, white, off white, weathered pcs inc.(75% of chert), some fresh, wthrd pcs with spotty stn, very faint residual cut, very faint odor

Chert, white, weathered(85-90% of chert), A.A., some fresh to weathered on the same pc, no new shows

Chert, off white, whrd (90%) fresh (10%), some pcs w/ spty stn rare (1) pc bleeding gas, no odor

Chert, white to off white, fresh to whthered, spotty stn (in cracks) (>10%)

Chert, white, fresh, some / whthered edges/ sides, rare pcs w/ stnd wthrd pcs, rare bleeing gas

Chert, AA, 60% whthered, 40% fresh

Chert, white, off white, mostly wthrd, (90%) (10% fresh), scatt stn on whrd pcs

Chert, AA, 90% wthrd, scatt stn (60% from above?) rare bleeding gas

Cherty AA, inc in fresh pcs w/ no stn, rare (10%)

Cherty mostly wht, wthrd (40% fresh), w/ wthrd edges stn on wthred edges 80%

Chert, white, 50% weathered, 50% fresh, carrying shows A.A., some fossilif.

MS, crm to brn, hard, f-xln, scatt fossils, dense, NS dull fluor, carrying Chert, A.A.(75% sample)

MS, crm to lt. gray, brn, mic to f-xln, hard, dense, some brittle, fossils, some pcs sandy looking, NS, SH, grays, varicolored, still carrying a lot of Chert, A.A.

MS-WS, brn to crm, f-xln, dense, hard, fossilif., sub oolitic pcs, dull fluor, NS, SH, A.A.

MS-WS, brn to crm, f-xln, dense, hard, fossilif., sub oolitic pcs, dull fluor, NS, carrying SH and chert, A.A.

Carry a lot of SH, gray to green, yellow, calcitic(some fresh SH?), Chert, white, mostly fresh, MS, brn to off white, f-xln, some mic-xln, hard, fossils, rare pcs sli. dolomitic, vf-gr/gritty txt, friable, dull fluor, NS

MS, brn, crm, lt. gray, f-xln, dense, NS, carrying SH, chert, A.A.

SH, various grays, maroon, mustard yellow, brn, sli. silty some MS, brn, to crm, f-xln, dense, some Chert, white, dec. amt

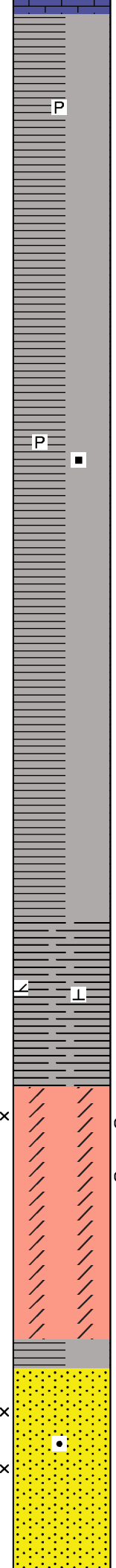
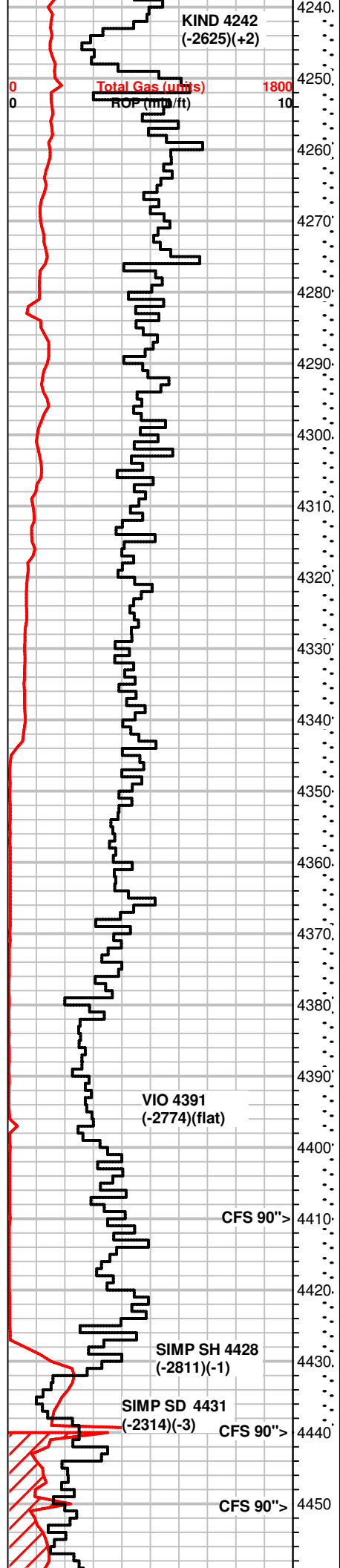
MS, tan to brn, f-xln, firm to dense, hard, some brittle, fossils, rare dk. mineral specs, pyrite, SH, gray, dk. gray, red, maroon, greenish gray, mustard yellow

MS, brn to tan, f-xln, fossils, silty to chalky pcs, most dense, lesser SH, gray, dk. gray, green, pyrite

WS, brn, mic to f-xln, dense, fossilif, dull fluor, NS

NO GAS KICK across Mississippi Chert

DST #3 3965-4065
Miss Chert
30-60-45-90
SB BOB/immed GTS/3 min
Ga 1 in choke
2.7MMCF/10"
2.1MMCF/20"
2.1MMCF/30"
Wouldn't bleed off
Ga 1 inch choke
2.4MMCF/10"
2.1MMCF/20"
2.1MMCF/30"
2.1MMCF/40"
3723' GIP
Rec: 240' GCM (10g,90m)
IH 1937#
IF 837-534#
ISIP 1183#
FF 680-515#
FSIP 1247#
FH 2056#
Temp 119°F



Influx SH, gray to dk. gray pcs(fresh), platy, fossil molds, scatt varicolored(carrying?), scatt WS-MS, A.A.

SH, grays, greenish gray, pyrite, silty pcs scatt, rare Dk. gray/blk pcs

SH, gray, platy, rare MS, brn to crm,f-xln, dense

SH, A.A., green, some pyrite

SH, lt grays, some dk, yellowish, brn

SH H, grays, green, rare blk, pyrite, carb

SH A.A., MS, crm to fnm-xln, gritty, txt, hard, dense, NS

SH, dk gray, gray, green, silty, striated

SH, grays, green, red, brn, pyrite

SH A.A., MS-WS, crm to brn, f-xln, dense, fossils

SH, gray, dk. gray, green, silty, scatt maroon, yellow

SH, grays, green, pinkish brn

SH, A.A., MS, crm to brn, f-xln, dense, brittle pcs, scatt fossils, most barren

SH, grays, A.A., some pcs limey to dolomitic/calc., bleeding gas, flash odor

SH, gray to brn, silty, sli. carb, bleeding gas, v. faint to flash odor in bag

Samples still carrying SH, A.A, gassy

Dolo, tan to lt. gray, vf-suc, hard, vf-gritty txt, no fluor, minderal specs,

Do. tan to lt. gray, brn, sandy pcs, A.A., spotty bright fluor, spotty stn, streaming cut, 2 pcs, tite, some pcs no cut, Chert, brn, blocky, 60", dolo, A.A., spotty bright fluor, no cut, no odor

Dolo,A.A., scatt fluor, NS
Chert, brn

Dolo, brn to tan, lt. gray, f to m-xln, hard, rare dull fluor, NS
sandy pcs, some brittle, Chert, brn, white

SH, sea green, grays, carrying Dolo. A.A.

SS cluster, white, f to m-gr, sorted, sub ang. to sub rnded, Rare loose Qtz grs., co-gr, rnded, sli. frosted, rare spotty stn in dry, no odor

SS clusters, gray to wht, f to m-gr, sub angular to sub rnded, sorted, hard and tite to friable, some mineral specs, sli. dolomitic in part, no odor, no fluor, 1 drop of free oil in tray

SS clusters, white, f to m-gr, friable to hard, A.A.

ALL TOPS BELOW MISS ARE CORELATED TO Vincent Oil Corp. JONES TRUST #1-23 in the NW NW of Sec. 23

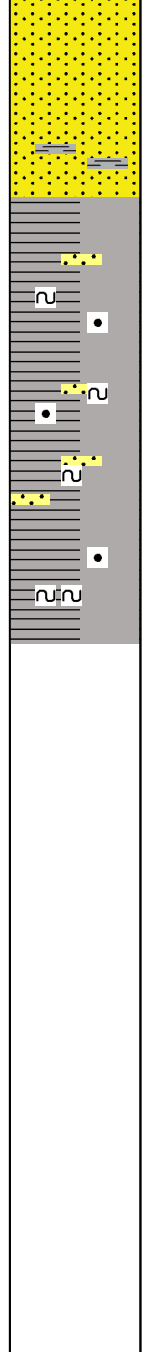
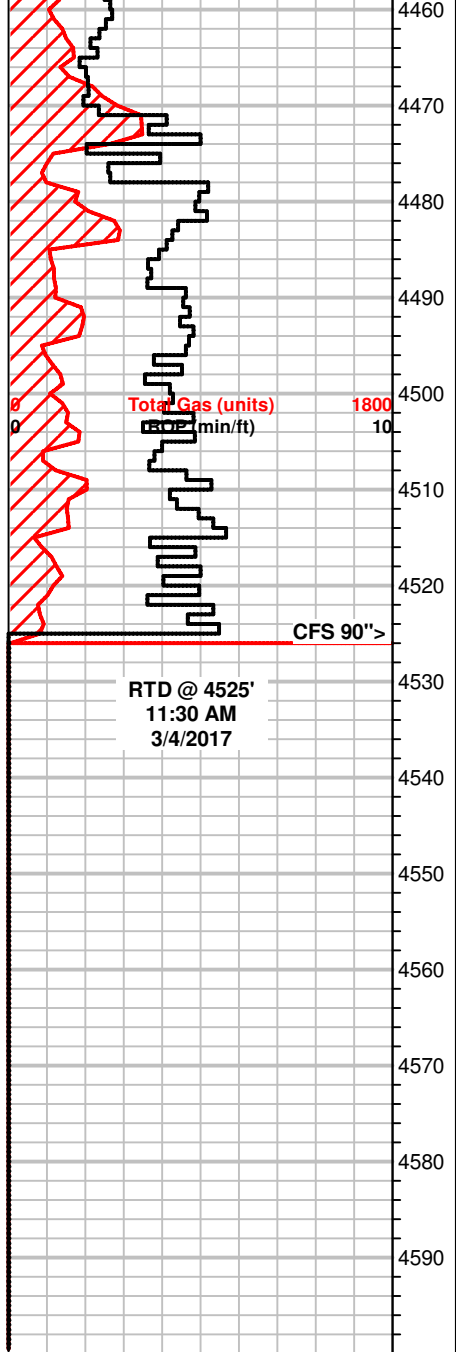
Gas line frozen @ 3:30 AM, can't find the blockage

**Mud @ 4440
50 vis
9.0 wt
2#**

**+150 UGK
+113 UGK recycle**

Gas reading high due to previous test!

**DST #4 4235-4440
Viola-Simp Sd.
30-60-45-90**



SS clusters, A.A., scatt loose Qtz grs, m to co-gr, some frosty, no fluor, no odor, NS, scatt SH, rare dk. gray, most grays

SH, dk. gray to gray, green, some w/ SS clusters stuck on the edge, friable, soft, NS, scatt SS, A.A., NS

SH, dk. gray to gray, green, some pcs of SS, white to gray, f to c-gr, poorly sorted, sub angular, friable, glauc and dk. mineral specs, NS

Flood, SH, dk. gray, mostly gray, green, sandy pcs, rare SS clusters, some from above, some fresh, very silty to shaly, mineral inclusions, NS

SH, dk. gray to gray, green, greenish gray striated, somre pyrite, SS clusters, silty, friable, most with mineral inclusions

SH, gray, rare dk. gray, soft, sandy pcs scatt., glauc

SB, BOB/90 sec
 WBB surf blow
 SB BOB/2 min GTS/12 min, TSTM
 BB built to BOB/5 min.
 2513' GIP
 Rec: 252' GCM (20g,80m)
 378' GOCM (10g,20o,70m)
 1071' GMCO (30g,50o,20m)
 IH 2110#
 IF 158-385#
 ISIP 1481#
 FF 413-683#
 FSIP 1493#
 FH 2112#
 Temp 125°F

Mud @ 4490
 57 Vis
 8.9 Wt
 2# LCM
 8.0 filtrate