

Scale 1:240 Imperial

Well Name: Dohrman #1-26
 Surface Location: Sec. 26 - T18S - R10W
 Bottom Location: APL
 License Number: 15-159-22840-0000
 Spud Date: 5/25/2017
 Region: Rice County
 Drilling Completed: 5/30/2017
 Surface Coordinates:
 Bottom Hole Coordinates:
 Ground Elevation: 1743.00ft
 K.B. Elevation: 1751.00ft
 Logged Interval: 2350.00ft To: 3289.00ft
 Total Depth: 3289.00ft
 Formation: Precambrian Quartzite
 Drilling Fluid Type: Chemical/Fresh Water Gel

OPERATOR

Company: Edison Operating Company LLC
 Address: 8100 E. 22nd St. North
 Building 1900
 Wichita, KS 67226
 Contact Geologist: David Wittrow
 Contact Phone Nbr: 316.613.1544
 Well Name: Dohrman #1-26
 Location: Sec. 26 - T18S - R10W
 APL: 15-159-22840-0000
 State: Kansas
 Field: Orth
 Country: USA

LOGGED BY

Company: Edison Operating Company LLC
 Address: 8100 E. 22nd St. North
 Building 1900
 Wichita, KS 67226
 Phone Nbr: 316.655.3550
 Logged By: Geologist Name: Derek W. Patterson

REMARKS

After review of the geologic log, positive structural position, and the open hole logs for the Dohrman #1-26, it was decided upon by operator to run 5 1/2" production casing for further evaluation of the Precambrian Quartzite section.

The well samples were saved, submitted, and will be available for review at the Kansas Geologic Survey's Well Sample Library located in Wichita, KS.

Respectfully Submitted,

Derek W. Patterson

GENERAL INFORMATION

Service Companies

Drilling Contractor: Southwind Drilling - Rig #3
 Tool Pusher: Jay Krier
 Daylight Driller: Darrel Yott
 Evening Driller: Jim Pfaff
 Morning Driller: Ken Thompson

Drilling Fluid: Mud-Co/Service Mud Inc.
 Engineer: Rick Hughes

Logging Company: Eli Wireline
 Engineer: Jeff Luebbers
 Logs Ran: DI, CDNL, Micro, Sonic

Gas Detector: Bluestem Environmental
 Engineer: Keith Reavis
 Unit: 5258
 Operational By: 1400'

Testing Company: No DSTs
 Tester: n/a

Deviation Survey		Pipe Strap		
Depth	Survey	Depth	Pipe Strap	Pipe Strap
3289' - RTD	1*		n/a	

Bit Record									
Bit #	Size	Make	Type	Serial Number	Depth In	Depth Out	Feet	Hours	
1	12 1/4"	Reed	RT	Surface	0'	388'	388'	6.25	
2	7 7/8"	Reed	R-24	D238948	388'	3172'	2784'	68.75	
3	7 7/8"	JZ	HA20Q	RR	3172'	3185'	13'	2.75	
4	7 7/8"	Reed	R-24	D213166	3185'	3215'	30'	3.25	
5	7 7/8"	JZ	RR	RR	3215'	3258'	43'	4.25	
6	7 7/8"	Reed	R-24	D213165	3258'	3289'	31'	3	

5.26.2017 Ran 9 joints of 8 5/8" surface casing, set @ 388' KB. Cemented with 250 sacks 60/40 Poz. Cement did circulate.
 Plug down @ 0730 hrs 5.26.17. By Basic Energy Services.

5.31.2017 Ran 80 joints of 0730 hrs and tested 5 1/2" production casing, tallying 3292.10', set @ 3289' KB. Cemented with 175 sacks AA-2 10% salt, 5% calset, .3% FR, .3% FLR-322, 1% GB & 5#/sx gillcoite. Cement did circulate.
 Plug down @ 1530 hrs 5.31.17. By Basic Energy Services.

DAILY DRILLING REPORT

Date	0700 Hrs Depth	Previous 24 Hours of Operations
5.29.2017	2939'	Drilling and connections upper Pennsylvanian beds. Geologist Derek W. Patterson on location 1240 hrs 5.28.17. Reset Bloodhound and test system. Drilling and connections Topeka. CFS @ 2704' (Topeka - Plattsmouth). Resume drilling and connections Topeka, Heebner, Toronto, Douglas, and into Lansing-Kansas City. Drilling and connections Lansing-Kansas City. Made 879' over past 24 hrs of operations. WOB: 30k RPM: 80 PP: 900 SPM: 60 DMC: \$1,724.10 CMC: \$5,196.83
5.30.2017	3215'	Drilling and connections Lansing-Kansas City, Base Kansas City, and into Precambrian Quartzite. Stop for bit trip @ 3172' (Quartzite). CTCH, TOH for bit trip #1 1945 hrs 5.29.17. TIH with new bit. CTCH, resume drilling following bit trip 2330 hrs 5.29.17. Drilling and connections Precambrian Quartzite. Stop for bit trip @ 3185' (Quartzite). CTCH, TOH for bit trip #2 0100 hrs 5.30.17. TIH with new bit. CTCH, resume drilling following bit trip 0415 hrs 5.30.17. Drilling and connections Precambrian Quartzite. Made 278' over past 24 hrs of operations. WOB: 30k RPM: 80 PP: 900 SPM: 60 DMC: \$82.00 CMC: \$5,278.83
5.31.2017	RTD - 3289' LTD - 3290'	Drilling and connections Precambrian Quartzite. Stop for bit trip @ 3215' (Quartzite). CTCH, TOH for bit trip #3 0730 hrs 5.30.17. TIH with new bit. CTCH, resume drilling following bit trip 1035 hrs 5.30.17. Drilling and connections Precambrian Quartzite. Stop for bit trip @ 3258' (Quartzite). CTCH, TOH for bit trip #4 1455 hrs 5.30.17. TIH with new bit. CTCH, resume drilling following bit trip 1815 hrs 5.30.17. Drilling Precambrian Quartzite ahead to RTD of 3289'. RTD reached 2125 hrs 5.30.17. CTCH, drop survey, TOH for logging operations. Rig up Eli Wireline. Commence open hole logging operations 1220 hrs 5.31.17, conclude open hole logging operations 0445 hrs 5.31.17. Orders received to run 5 1/2" production casing to further test the Precambrian Quartzite. Geologist off location 0545 hrs 5.31.17. Made 74' over past 24 hrs of operations. WOB: 30k RPM: 80 PP: 900 SPM: 60 DMC: \$789.59 CMC: \$6,068.22

WELL COMPARISON SHEET

Formation	Edison Operating - Dohrman #1-26				Bay Petroleum - Refs #3				Birmingham-Bartlett Drilling - Godfrey #5				
	Sample	Sub-Sea	Log	Sub-Sea	Sample	Sub-Sea	Log	Sample	Sub-Sea	Log	Sample	Log	
1240 Imperial	2477	-726	2478	-727	2478	-729	2478	2	2	2485	-729	3	2
Topeka	2573	-822	2572	-822	2572	-822	2572	2	2	2572	-816	6	5
Queen Hill	2650	-899	2650	-899						2651	-905	6	6
Plattsmouth	2685	-934	2684	-933						2697	-941	7	8
Heebner	2739	-988	2738	-987						2735	-999	11	12
Toronto	2760	-1009	2760	-1009						2777	-1021	12	12
Douglas	2768	-1017	2767	-1016						2784	-1028	11	12
Brown Lime	2856	-1105	2856	-1105						2879	-1123	18	18
Lansing-Kansas City	2881	-1130	2880	-1129	2879	-1132	2	3	2903	-1147	17	19	
LKC 'D'	2922	-1171	2921	-1170						2925	-1169	20	20
LKC 'E'	2948	-1197	2948	-1197						2944	-1188	17	16
LKC 'G'	2970	-1219	2970	-1219						2970	-1214	17	17
LKC 'H'	3006	-1255	3006	-1255						2982	-1226	7	7
LKC 'I'	3034	-1283	3032	-1281						3059	-1294	26	26
LKC 'J'	3043	-1297	3048	-1297						3065	-1309	26	28
Stark	3078	-1327	3076	-1325						3110	-1354	27	29
LKC 'K'	3083	-1332	3082	-1331						3119	-1363	31	32
Hushpuckney	3118	-1367	3111	-1360						3146	-1390	23	30
LKC 'L'	3121	-1370	3118	-1367						3155	-1399	29	32
Base Kansas City	3152	-1401	3152	-1401						3186	-1430	29	29
Arbuckle	Not Present				Not Present					3241	-1485	n/a	n/a
Precambrian Quartzite	3171	-1428	3163	-1412	3240	-1483	73	81		Not Present			
Total Depth	3289	-1538	3290	-1539	3291	-1544	6	5		3272	-1516	22	23

ROCK TYPES

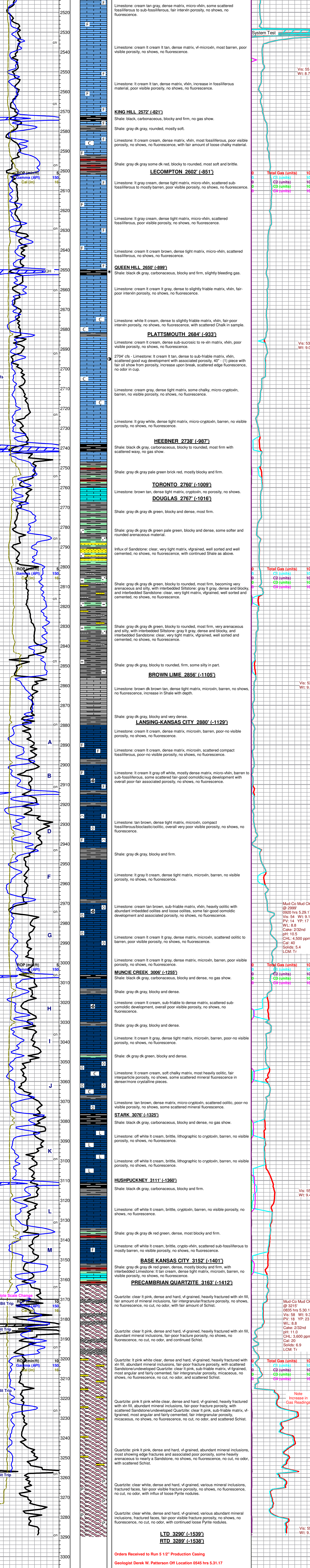
LMST1	LMST4	SCHIST	SHALE GRA
LMST2	QRTZITE	SHALE CAR	SHALE RED
LMST3	Ss	SHALE GRN	

ACCESSORIES

MINERAL	FOSSIL	STRINGER	TEXTURE
P Pyrite S Silty	B Bioclastic or Fragmental F Fossils < 20% O Oolitic C Comolitic	S Sandstone S Silstone	C Chalky L Lithog

OTHER SYMBOLS

DST	Curve Track #1
DST1	ROP (min/ft)
DST2	Gamma (API)
DST3	Cal (in)
Core	
Well pipe	



Respectfully Submitted,
Derek W. Patterson