



Fall & Associates
 Stake and Elevation Service
 P.O. Box 222
 Pretty Prairie, KS. 67570
 785-243-7506

Date 6-26-17

Invoice Number 0621171

Murfin Drilling

1-16

Mears

Operator

Number

Farm Name

Cheyenne-KS

16

2s

37w

2140'FNL 660'FWL

County-State

S

T

R

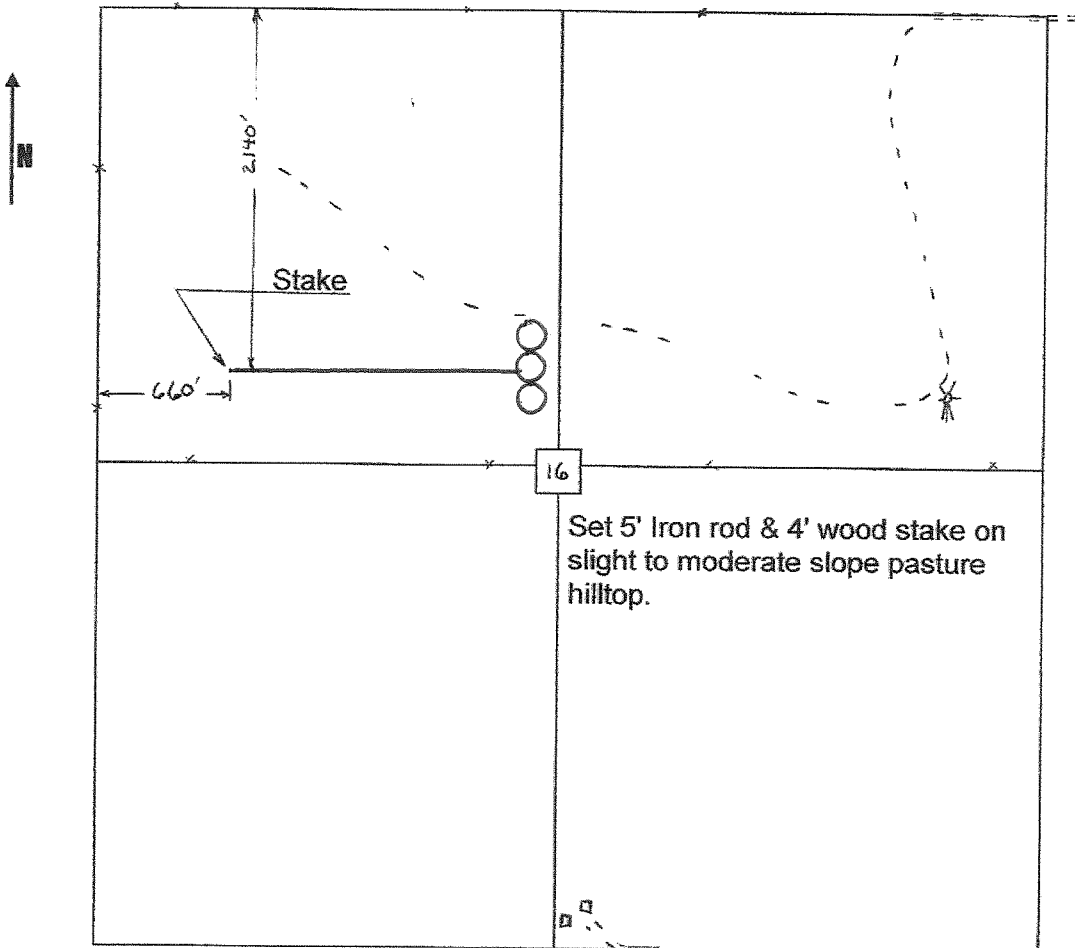
Location

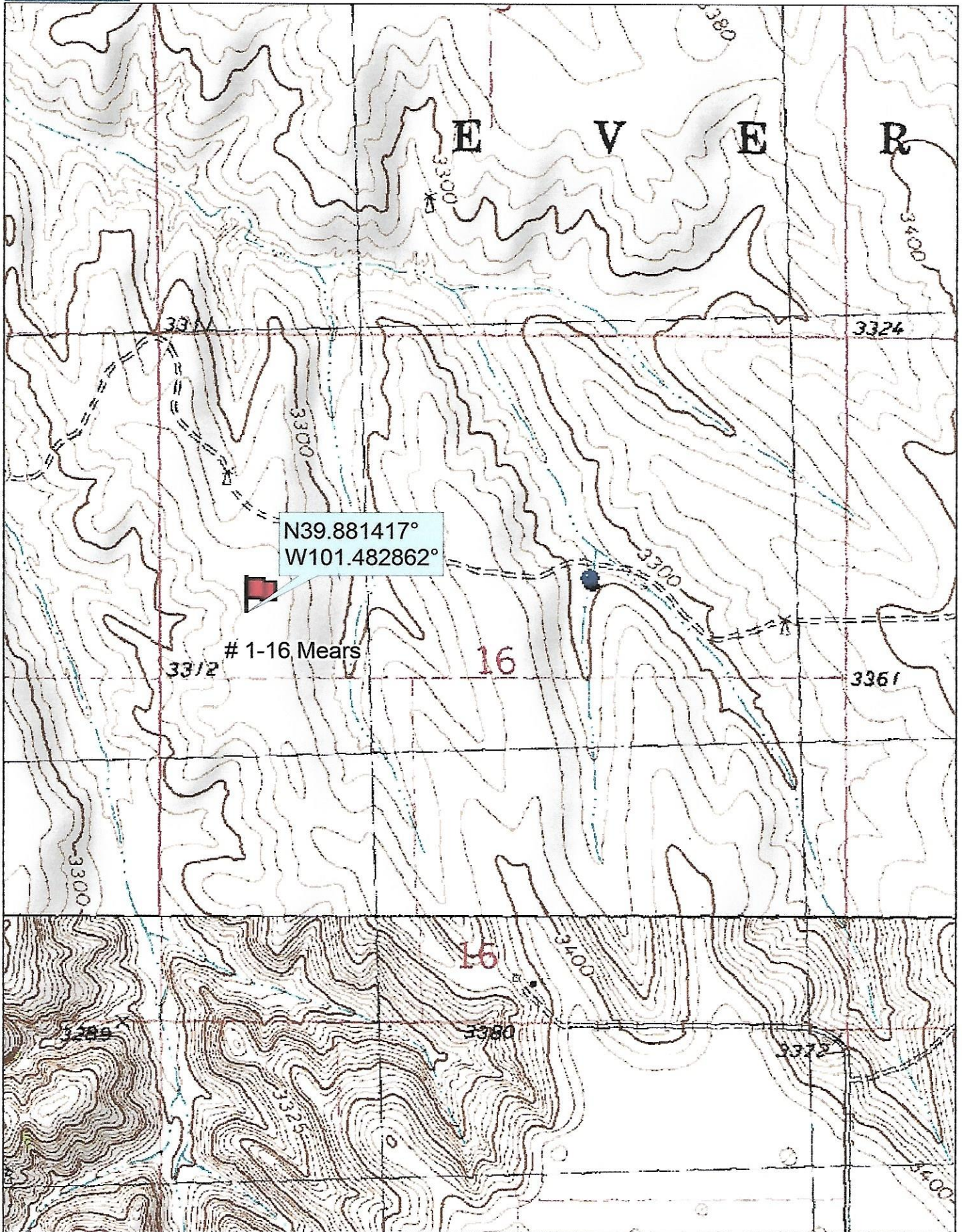
Murfin Drilling
 250 N. Water
 Suite 300
 Wichita, KS. 67202

Elevation 3366 Gr.

Ordered By: Shauna

Scale 1"=1000'





Data use subject to license.

© DeLorme. Topo North America™ 9.

www.delorme.com

