

LITHOLOGY STRIP LOG

WellSight Systems

Scale 1:240 (5"=100') Imperial
Measured Depth Log

Well Name: DENNIS UNIT #1-34
Location: NWSESESE Section 34 28S-33W Haskell County, Kansas
License Number: 15-081-22155
Spud Date: 3-8-2017
Surface Coordinates: 540' FSL & 335' FEL
Region: Midcontinent
Drilling Completed: 3-24-2017

Bottom Hole Coordinates:

Ground Elevation (ft): 2956
Logged Interval (ft): 4000 To: 5600
Formation: LKC, Pawnee, Fort Scott, Cherokee, Morrow, & Miss.
Type of Drilling Fluid: WBM

K.B. Elevation (ft): 2964

Total Depth (ft): 5600

Printed by WellSight Log Viewer from WellSight Systems 1-800-447-1534 www.WellSight.co

OPERATOR

Company: Berexco, LLC.
Address: 2020 N. Bramblewood
Wichita, Kansas 67206

GEOLOGIST

Name: William B. Bynog
Company:
Address: P.O.Box 687
Pinecliffe, Co. 80471

Survey's

DEPTH 5385'
ANGLE 3/4


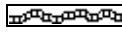
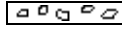

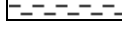
DSTs






DST#1 5352-5385', DST#2 5374-5388'



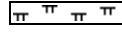

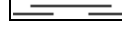
Comments

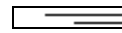




PRODUCTIVE WELL, SET CASING ON MORROW SAND TEST

ROCK TYPES

 Anhy
 Bent
 Brec
 Cht
 Clyst

 Coal
 Congl
 Dol
 Gyp
 Igne

 Lmst
 Meta
 Mrlst
 Salt
 Shale

 Shcol
 Shgy
 Sltst
 Ss
 Till

ACCESSORIES

- MINERAL**
- Anhy
 - Arggrn
 - Arg
 - Bent
 - Bit
 - Brecfrag
 - Calc
 - Carb
 - Chtdk
 - Chtlt
 - Dol
 - Feldspar
 - Ferrpel
 - Ferr
 - Glau
 - Gyp
 - Hvymin
 - Kaol
 - Marl

- Minxl
- Nodule
- Phos
- Pyr
- Salt
- Sandy
- Silt
- Sil
- Sulphur
- Tuff

- FOSSIL**
- Algae
 - Amph
 - Belm
 - Bioclst
 - Brach
 - Bryozoa
 - Cephal
 - Coral

- Crin
- Echin
- Fish
- Foram
- Fossil
- Gastro
- Oolite
- Ostra
- Pelec
- Pellet
- Pisolite
- Plant
- Strom

- STRINGER**
- Anhy
 - Arg
 - Bent
 - Coal
 - Dol

- Gyp
- Ls
- Mrst
- Sltstrg
- Ssstrg

- TEXTURE**
- Boundst
 - Chalky
 - Cryxln
 - Earthy
 - Finexln
 - Grainst
 - Lithogr
 - Microxln
 - Mudst
 - Packst
 - Wackest

OTHER SYMBOLS

- POROSITY**
- Earthy
 - Fenest
 - Fracture
 - Inter
 - Moldic
 - Organic
 - Pinpoint
 - Vuggy

- SORTING**
- Well
 - Moderate
 - Poor

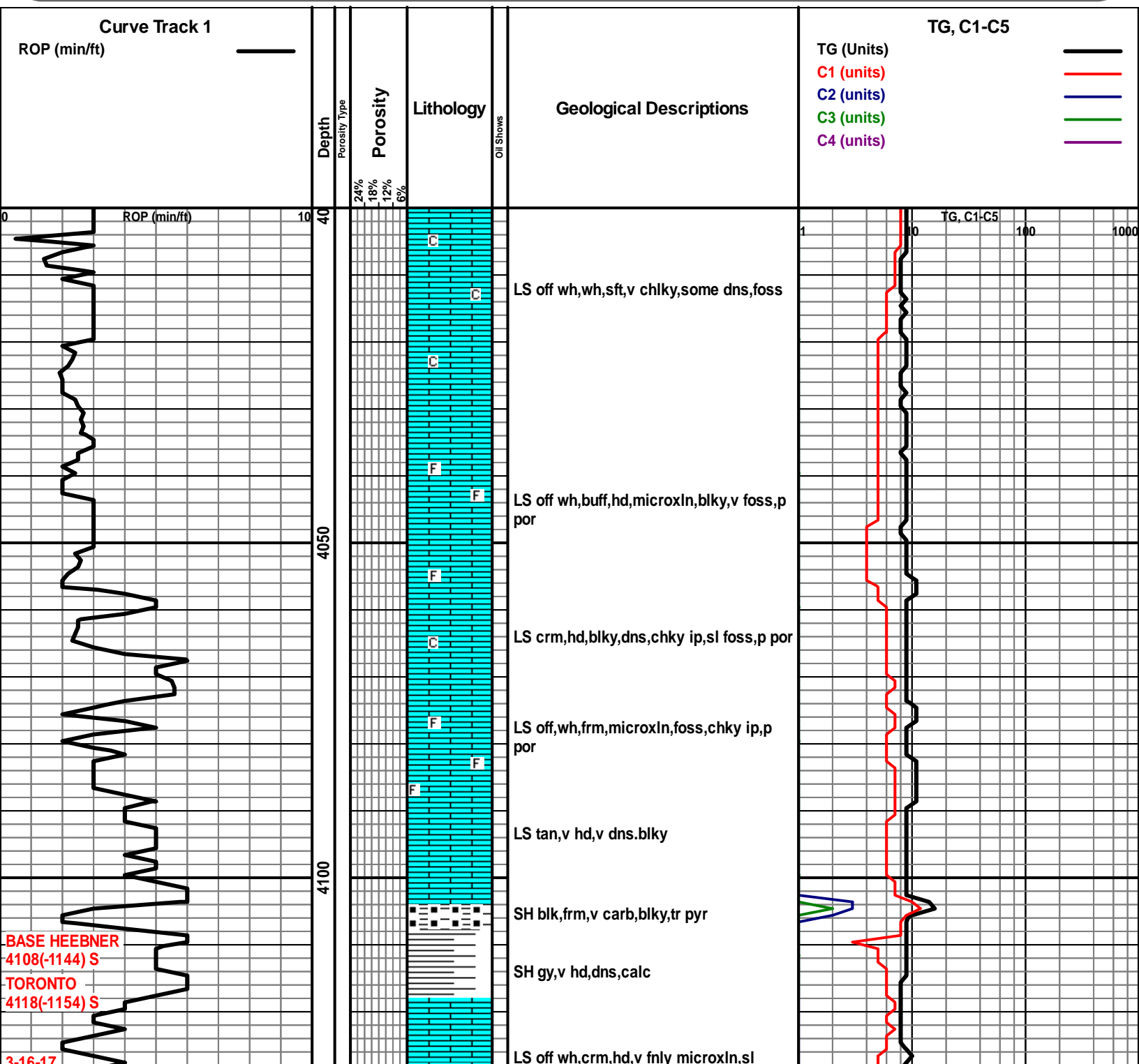
- ROUNDING**
- Rounded
 - Subrnd
 - Subang

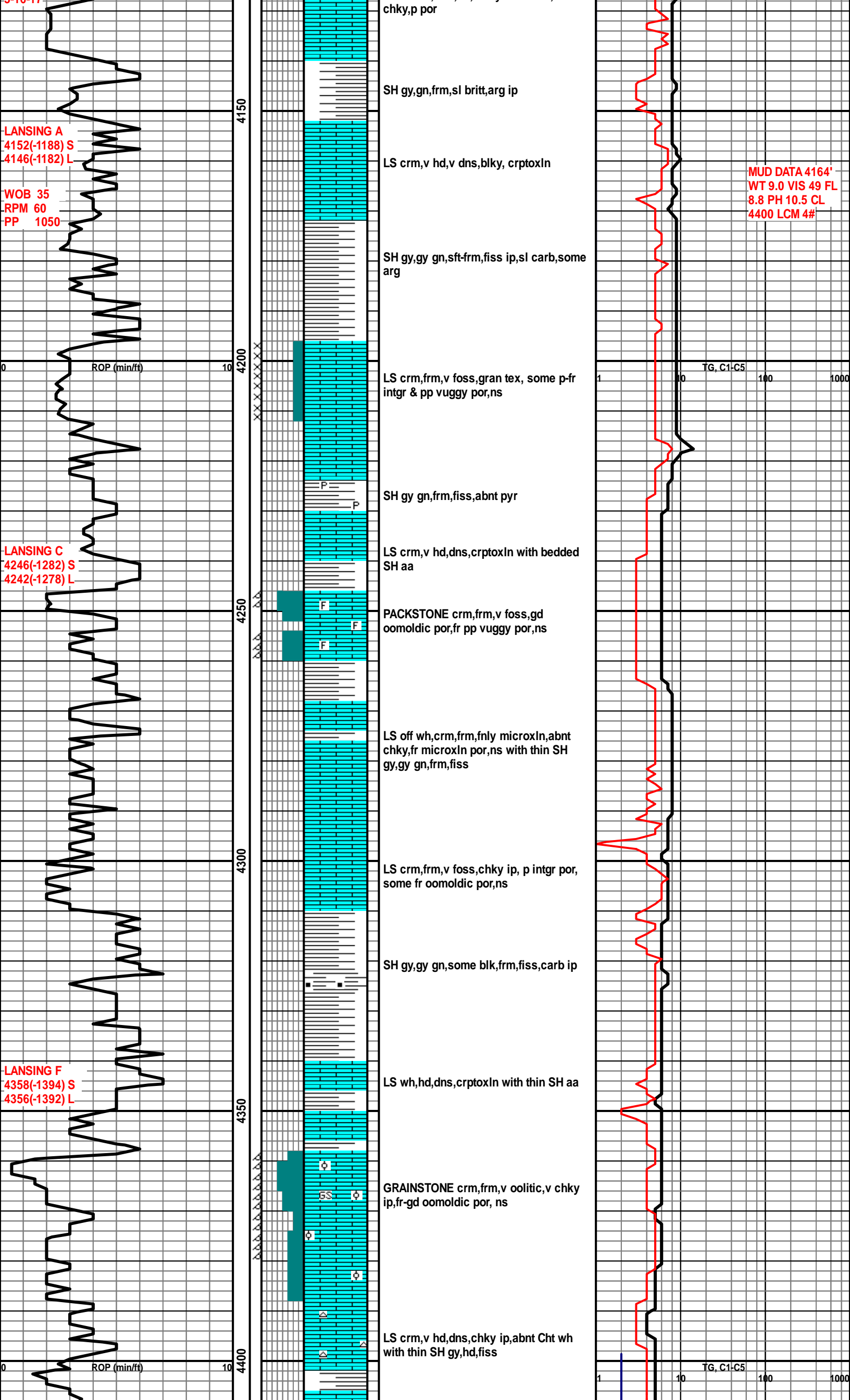
- Angular

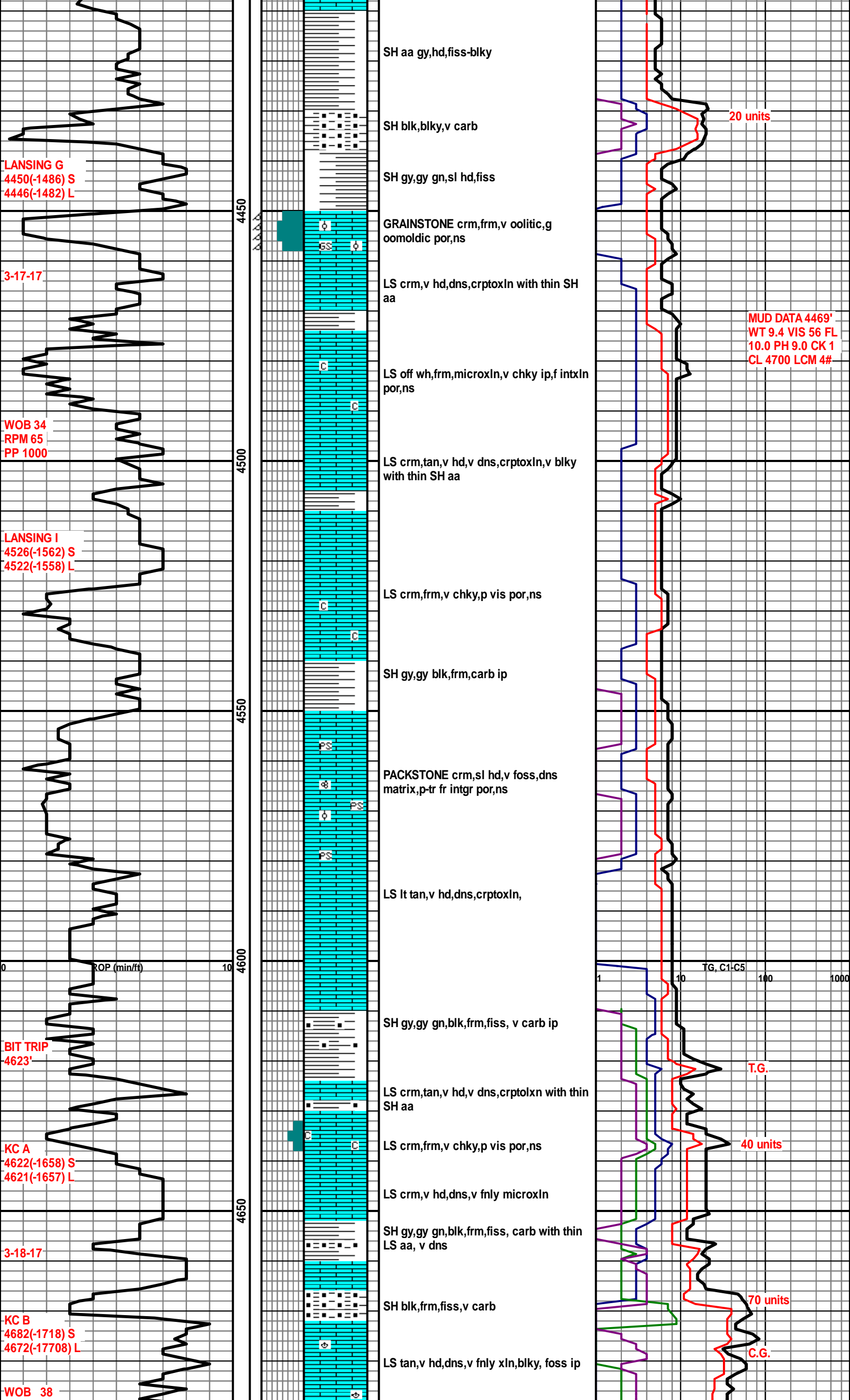
- OIL SHOW**
- Even
 - Spotted
 - Ques
 - Dead

- INTERVAL**
- Dst
 - Dst

- EVENT**
- Rft
 - Sidewall







LANSING G
4450(-1486) S
4446(-1482) L

3-17-17

WOB 34
RPM 65
PP 1000

LANSING I
4526(-1562) S
4522(-1558) L

BIT TRIP
4623'

KC A
4622(-1658) S
4621(-1657) L

3-18-17

KC B
4682(-1718) S
4672(-17708) L

WOB 38

4450

4500

4550

4600

4650

SH aa gy,hd,fiss-blky

SH blk,blky,v carb

SH gy,gy gn,sl hd,fiss

GRAINSTONE crm,frm,v oolitic,g oomoldic por,ns

LS crm,v hd,dns,crptoxln with thin SH aa

LS off wh,frm,microxln,v chky ip,f intxn por,ns

LS crm,tan,v hd,v dns,crptoxln,v blk with thin SH aa

LS crm,frm,v chky,p vis por,ns

SH gy,gy blk,frm,carb ip

PACKSTONE crm,sl hd,v foss,dns matrix,p-tr fr intgr por,ns

LS lt tan,v hd,dns,crptoxln,

SH gy,gy gn,blk,frm,fiss, v carb ip

LS crm,tan,v hd,v dns,crptolxn with thin SH aa

LS crm,frm,v chky,p vis por,ns

LS crm,v hd,dns,v fnly microxln

SH gy,gy gn,blk,frm,fiss, carb with thin LS aa, v dns

SH blk,frm,fiss,v carb

LS tan,v hd,dns,v fnly xln,blk, foss ip

20 units

MUD DATA 4469'
WT 9.4 VIS 56 FL
10.0 PH 9.0 CK 1
CL 4700 LCM 4#

T.G.

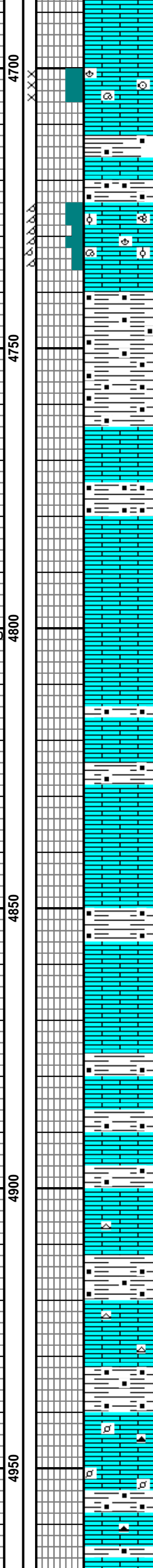
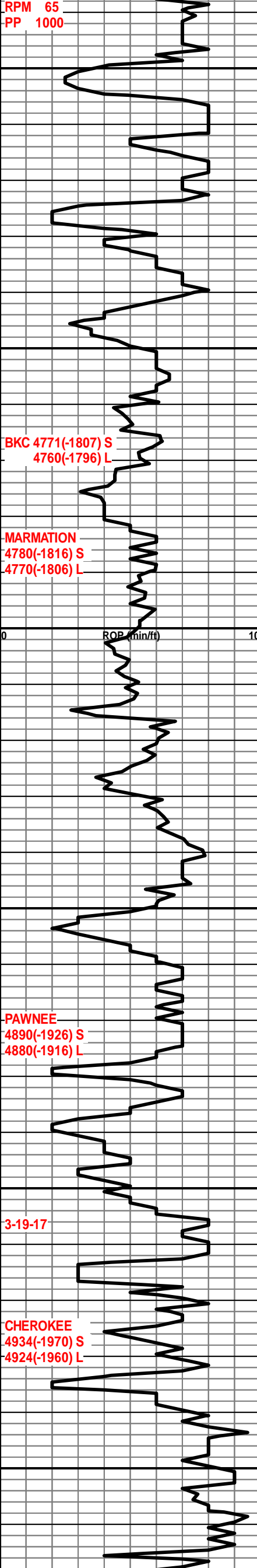
40 units

70 units

C.G.

ROP (min/ft)

TG, C1-C5



LS brn,v hd,v dns,blky, crptoxln

LS brn,frm,v foss,some p microIn por,ns

LS brn,v hd,dns,sl foss,v p por,ns

SH gy,blk,frm,blky,sl carb

LS brn,v hd,dns,crptoxln, sl foss with thin carb SH aa

PACKSTONE crm,sl hd,microIn,v foss, p-fr oomoldic por,no sample show

LS aa v dns

SH aa blk,fiss,v carb

LS crm,hd,blky,dns,v foss,no vis por,ns with thin SH aa

LS crm,v hd,v dns,v blky, no vis por,ns with thin SH blk,frm,v carb,fiss

LS lt brn,v hs,v dns,crptoxln

LS crm,lt tan,v hd,dns,crptoxln,v blky,ns

SH blk,frm,fiss,v carb with thin dns LS aa

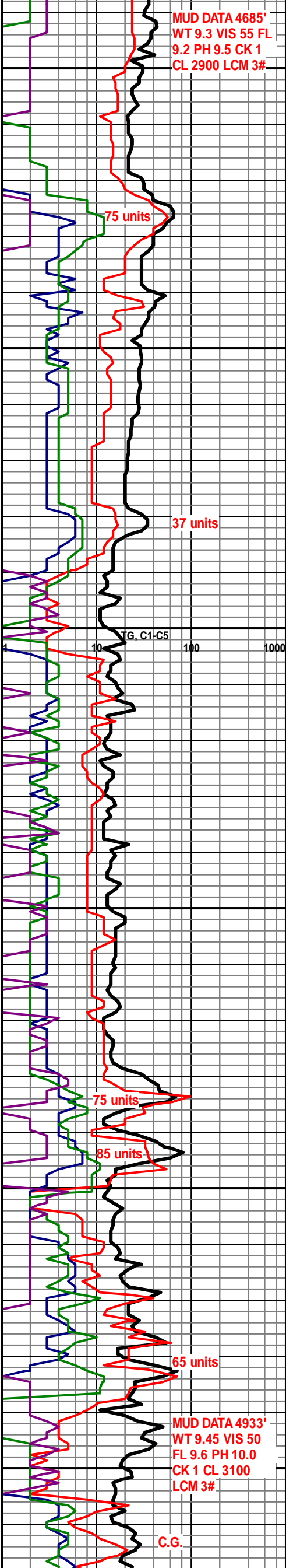
LS crm,v hd,dns,cprtoxln,tr Cht

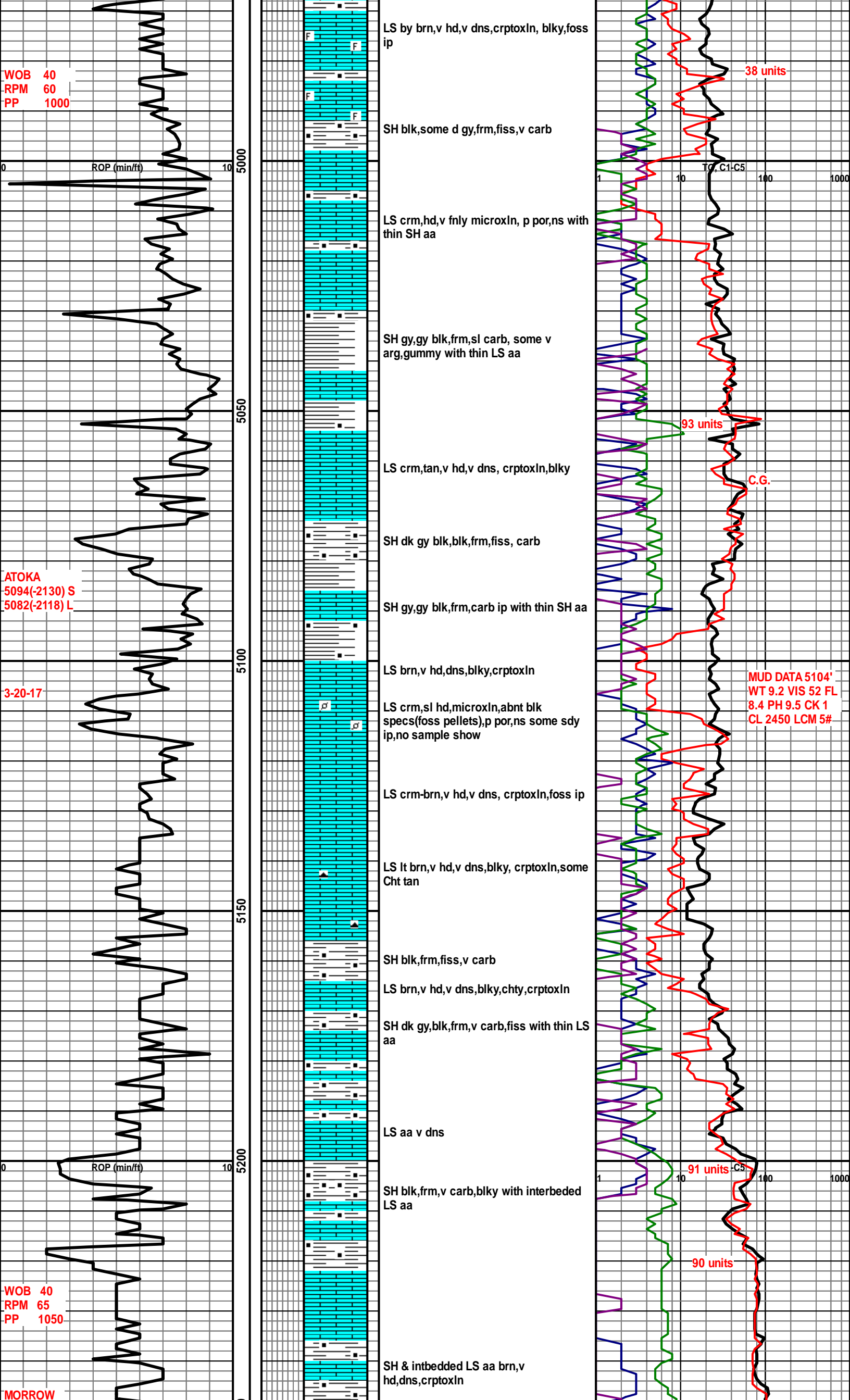
SH aa v carb

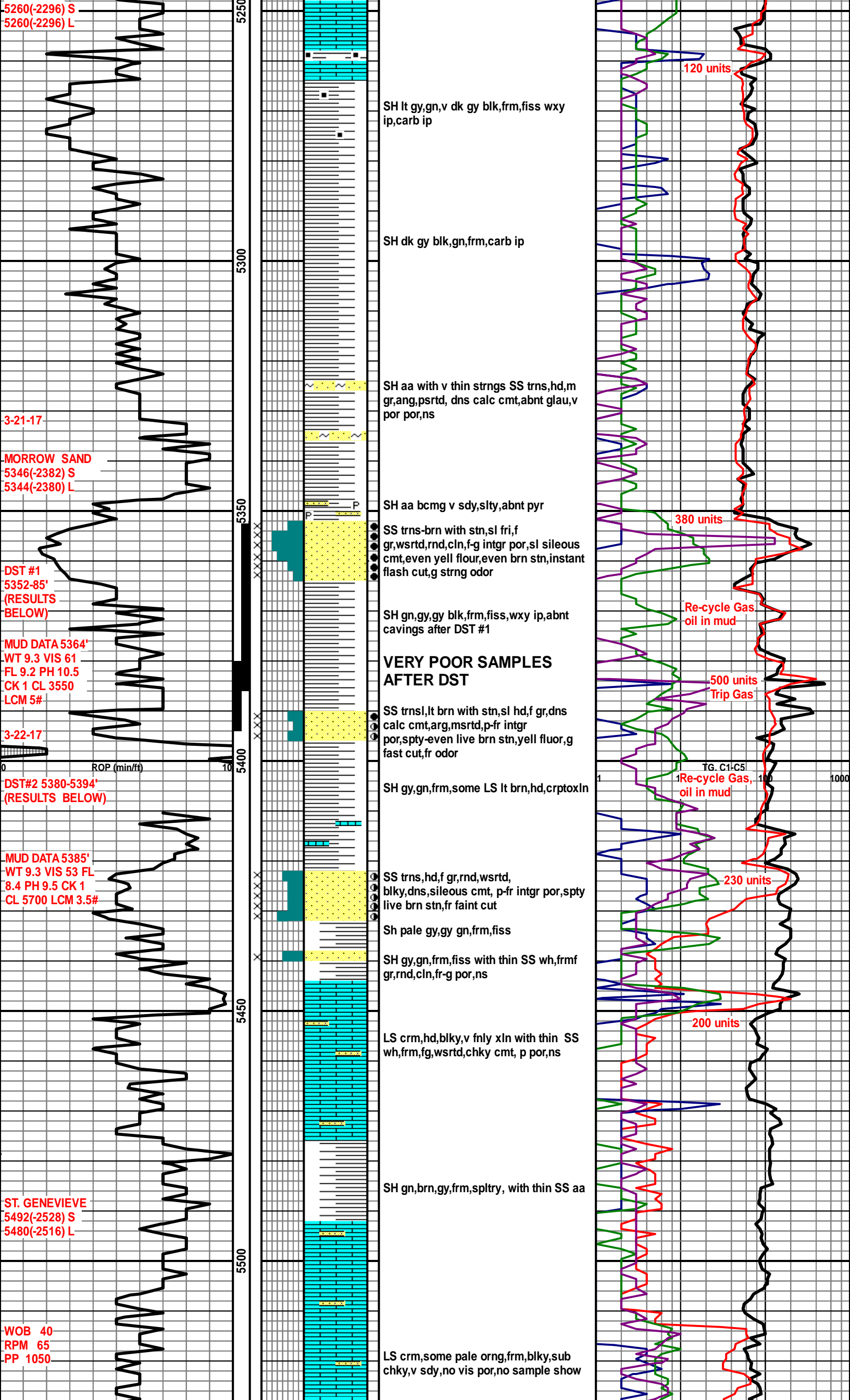
LS crm,brn,v hd,dns,blky, crptoxln some Cht smoky

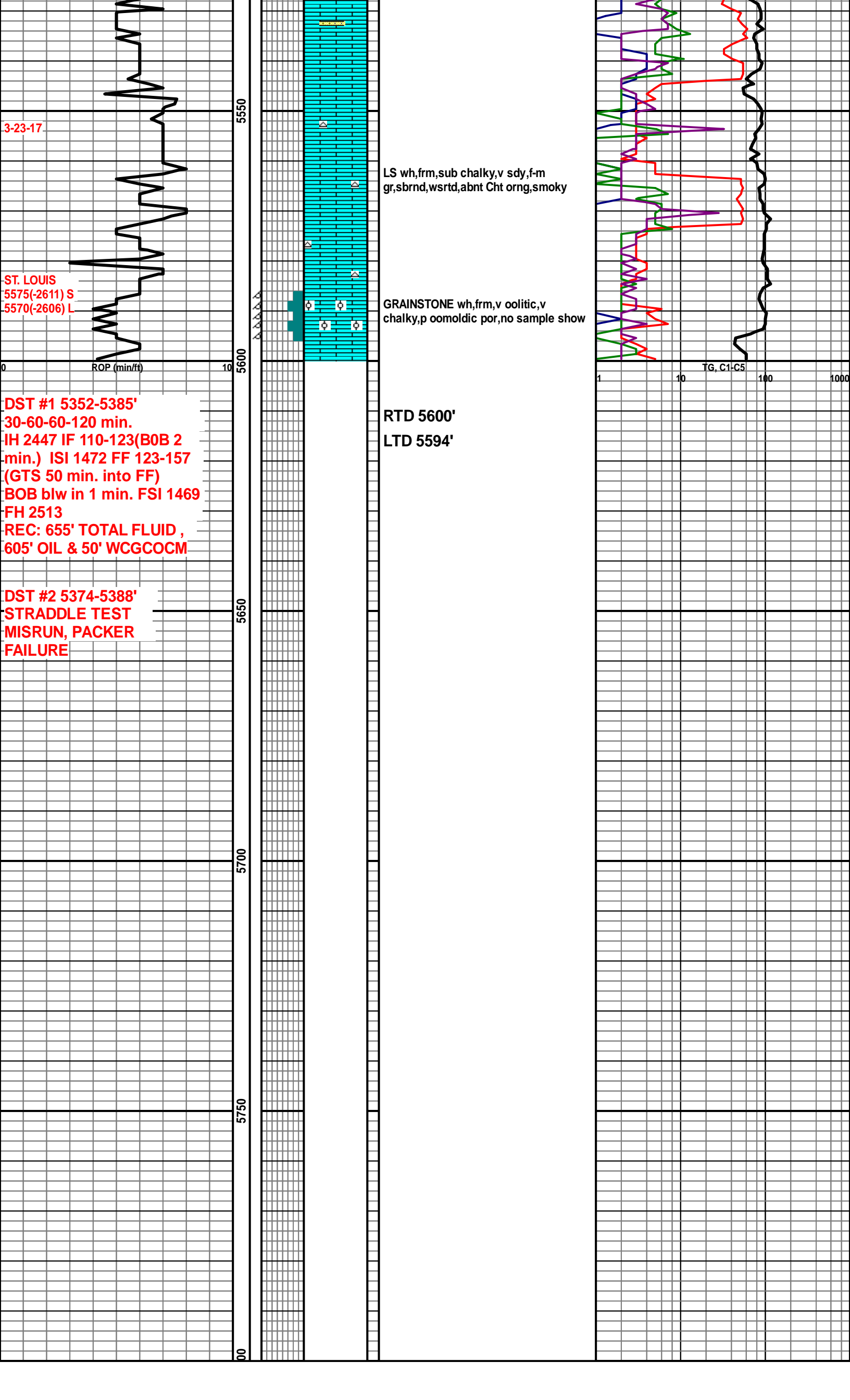
SH blk,frm,v carb

LS lt gy brn,v hd,v dns,cptoxln,blky,abnt pel ip,tr Cht tan with thin Sh gy gn,blk,frm,fiss, carb ip









3-23-17

5550

LS wh,frm,sub chalky,v sdy,f-m
gr,sbrnd,wsrtd,abnt Cht orng,smoky

ST. LOUIS
5575(-2611) S
5570(-2606) L

GRAINSTONE wh,frm,v oolitic,v
chalky,p oomoldic por,no sample show

ROP (min/ft)

5600

RTD 5600'
LTD 5594'

DST #1 5352-5385'
30-60-60-120 min.
IH 2447 IF 110-123(BOB 2
min.) ISI 1472 FF 123-157
(GTS 50 min. into FF)
BOB blw in 1 min. FSI 1469
FH 2513
REC: 655' TOTAL FLUID ,
605' OIL & 50' WCGCOCM

DST #2 5374-5388'
STRADDLE TEST
MISRUN, PACKER
FAILURE

5650

5700

5750

5800

TG, C1-C5

1 10 100 1000