

ADVANTAGE ELEVATIONS

OIL FIELD SURVEYORS

BOX 8604 - PRATT, KS 67124
(620) 672-6491

627171

INVOICE NO.

LOTUS OPERATING CO LLC
OPERATOR

1
NO.

RANDALL
FARM

BARBER
COUNTY

2 35s 13w
S T R

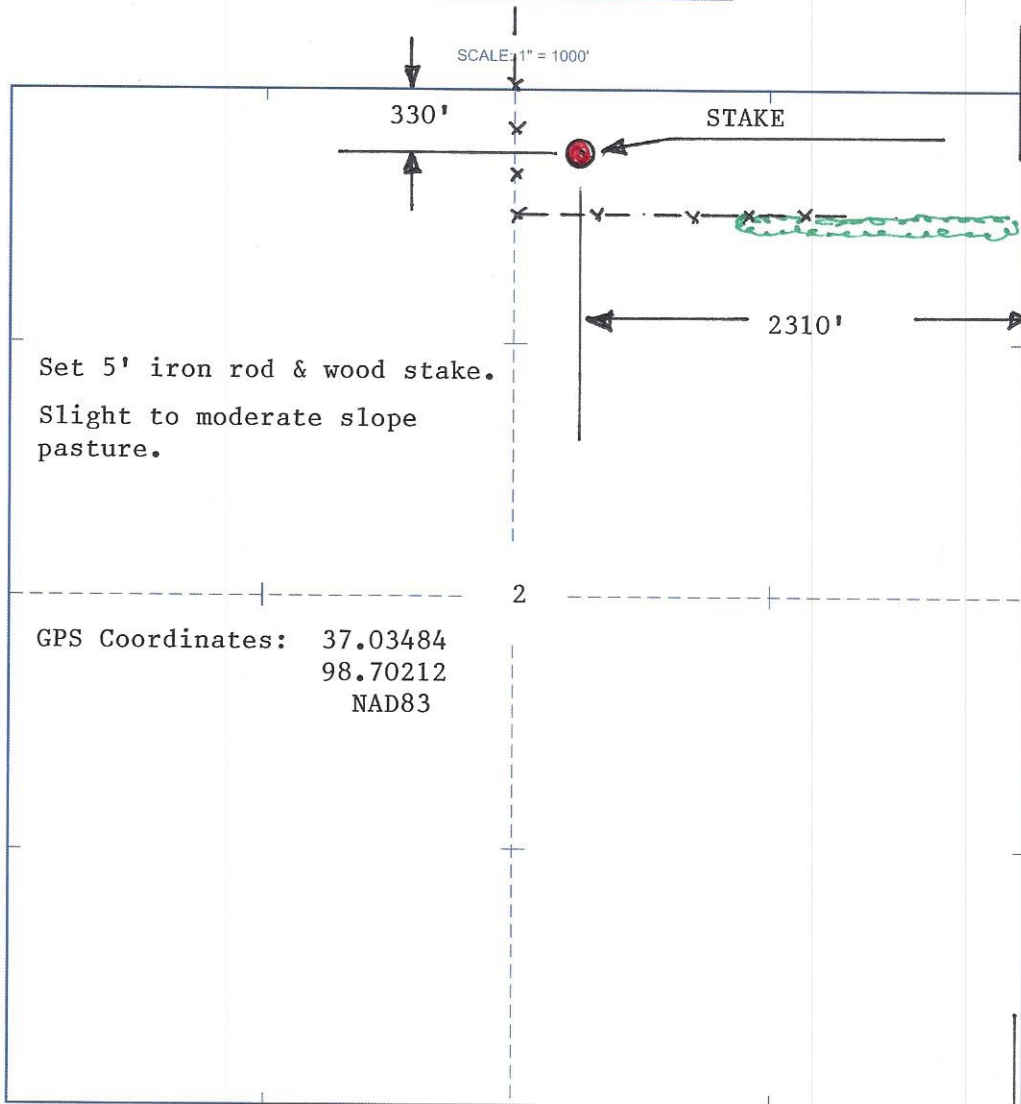
NW NW NE
LOCATION

ELEVATION: 1515' GR



LOTUS OPERATING CO LLC
100 S Main Ste 420
Wichita, KS 67202

AUTHORIZED BY: Tim Hellman



Set 5' iron rod & wood stake.
Slight to moderate slope
pasture.

GPS Coordinates: 37.03484
98.70212
NAD83

DATE STAKED: 6/28/17

