

Scale 1:240 Imperial

Well Name: Giebler Trust #1  
Surface Location: W2/NE/NW/SW  
Bottom Location:  
API: 15-015-24081  
License Number: 5086  
Spud Date: 6/15/2017 Time: 7:00 AM  
Region: Butler County Sec 20 T23S R3E  
Drilling Completed: 6/19/2017 Time: 4:30 PM  
Surface Coordinates: 2310' FSL & 695' FWL  
Bottom Hole Coordinates:  
Ground Elevation: 1441.00ft  
K.B. Elevation: 1447.00ft  
Logged Interval: 1500.00ft To: 3118.00ft  
Total Depth: 3117.00ft  
Formation: Burgess sand - Dry  
Drilling Fluid Type: Freshwater Chemical Mud

#### SURFACE CO-ORDINATES

Well Type: Vertical  
Longitude: -97.1315013 Latitude: 38.0356063  
N/S Co-ord: 2310' FSL  
E/W Co-ord: 695' FWL

#### OPERATOR

Company: Pintail Petroleum, Ltd.  
Address: 225 N. Market Suite #300  
Wichita, Kansas 67202  
Contact Geologist: Innes (Pops) Phillips  
Contact Phone Nbr: (316) 263-2243  
Well Name: Giebler Trust #1  
Location: W2/NE/NW/SW API: 15-015-24081  
Pool: Wildcat Field: Wildcat  
State: Kansas Country: United States

#### LOGGED BY

Company: Darrah Oil  
Address: 125 N. Market Suite #1425  
Wichita, Kansas 67202  
Phone Nbr: (620) 953-2066  
Logged By: Geologist Name: Seth L. Evenson

#### CONTRACTOR

Contractor: C and G Drilling  
Rig #: 1  
Rig Type: Standard Single  
Spud Date: 6/15/2017 Time: 7:00 AM  
TD Date: 6/19/2017 Time: 4:30 PM  
Rig Release: 6/20/2017 Time: 8:00 AM

#### OPEN HOLE LOGS

Logging Company: ELI Wireline  
 Logging Engineer: Gus Pfanenstiel  
 Truck #: 4010  
 Logging Date: 6/19/2017  
 # Logs Run: 2  
 Time Spent: 2  
 # Logs Run Successful: 2

**LOGS RUN**

Tool	Logged Interval	Logged Interval	Hours	Remarks	Run #
Comp Density/N	0.00ft	3118.00ft	2.00		1
Dual Induction	227.00ft	3118.00ft	2.00		1

**LOGGING OPERATION SUMMARY**

Date	From	To	Description Of Operation
6/19/2017	0.00ft	3118.00ft	Ran CDN_DI in one run

**ROCK TYPES**

Cht	Lmst fw<7	Ss	Shcol	Chtcongl
Coal	Lmst fw>7	Shgy	Siltst	Lscongl
Dolprim	Mrlstcalc	Shbck	Ool grnst	

**ACCESSORIES**

**MINERAL**

- Sandy
- Silty
- △ Chert White

**FOSSIL**

- Oolites

**STRINGER**

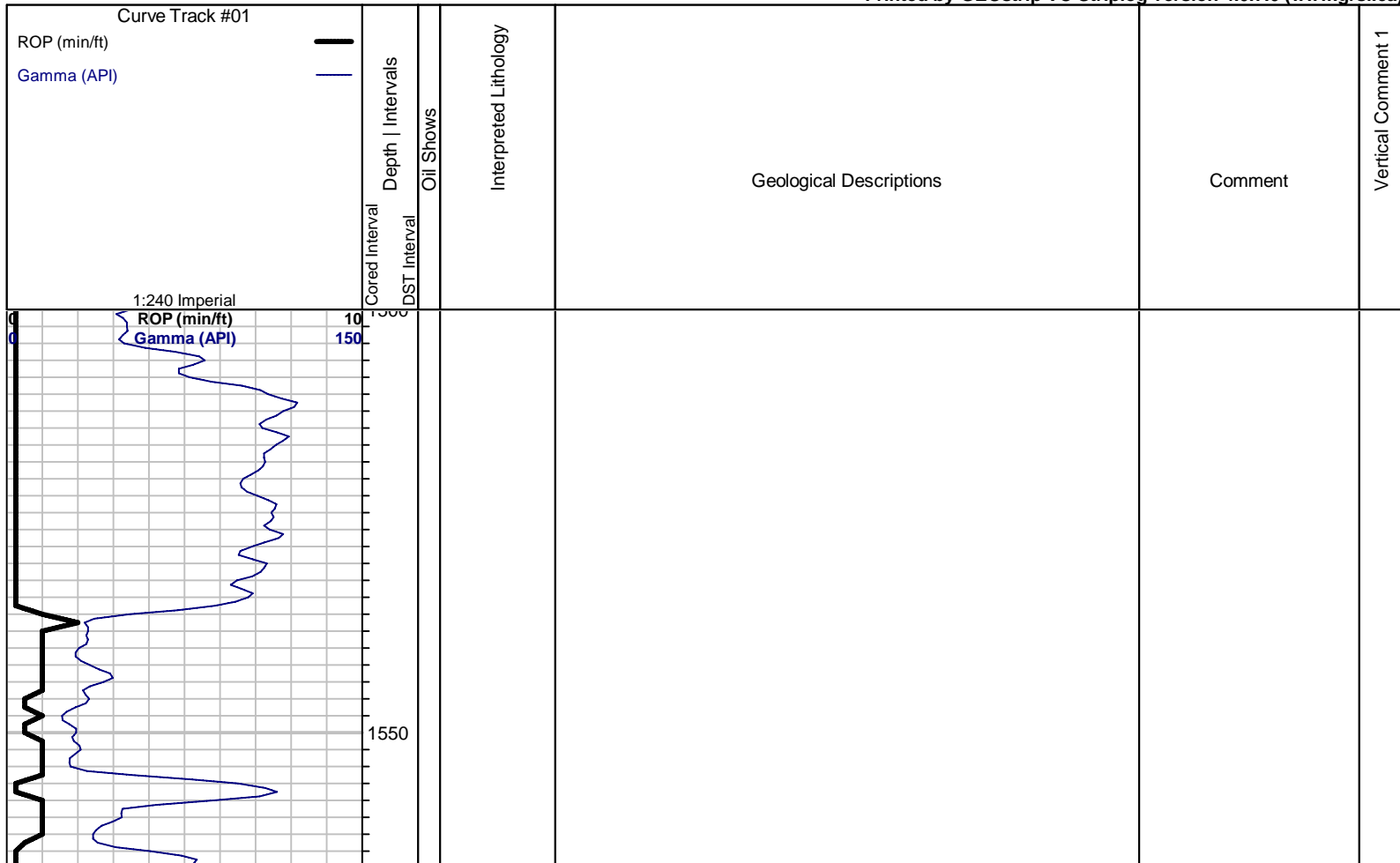
- Limestone
- Siltstone
- Shale

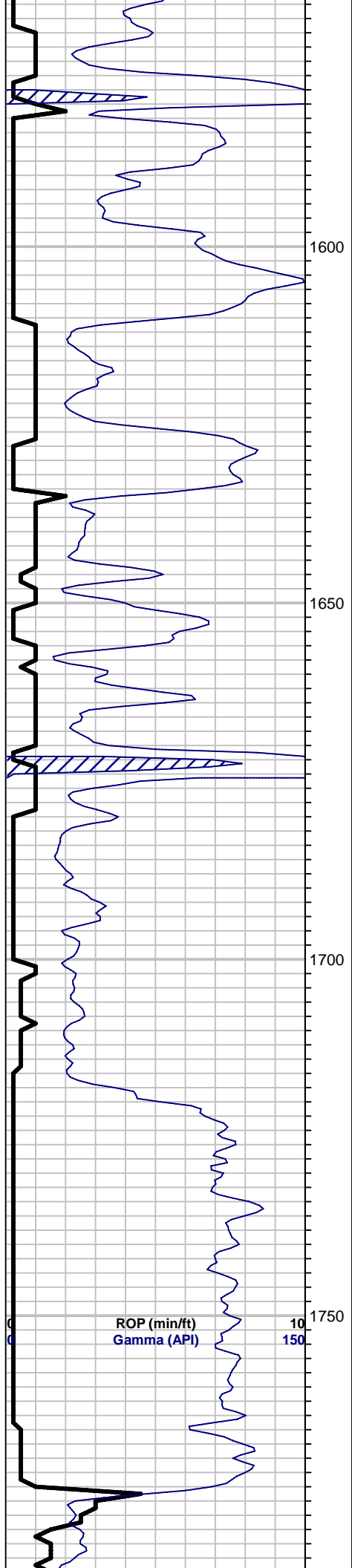
**OTHER SYMBOLS**

**OIL SHOWS**

- Even Stn
- Spotted Stn 50 - 75 %
- Spotted Stn 25 - 50 %
- Spotted Stn 1 - 25 %
- Questionable Stn
- D Dead Oil Stn
- Fluorescence

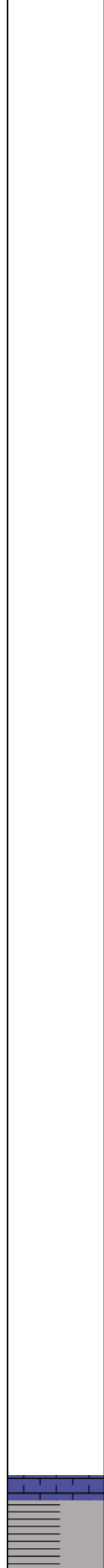
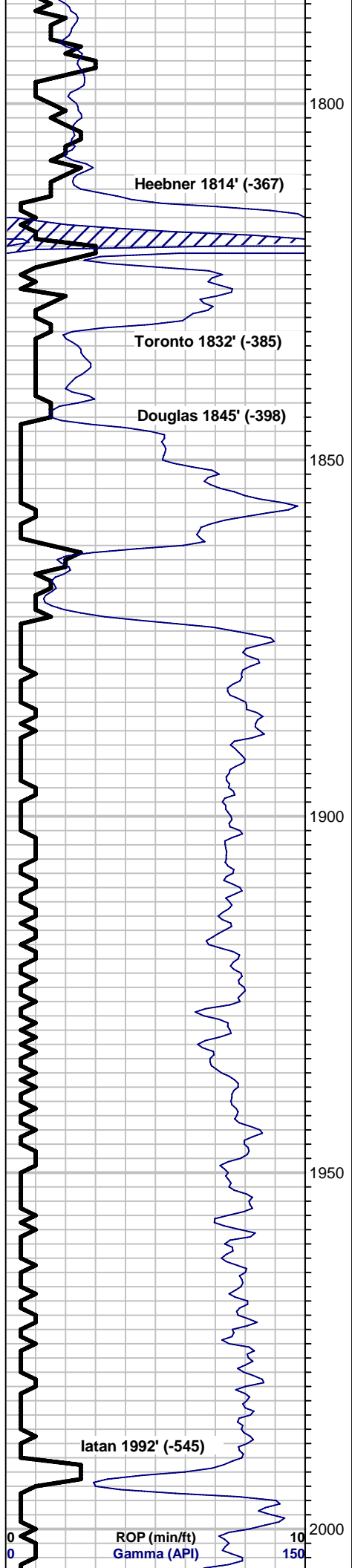
Printed by GEOstrip VC Striplog version 4.0.7.0 (www.grsi.ca)

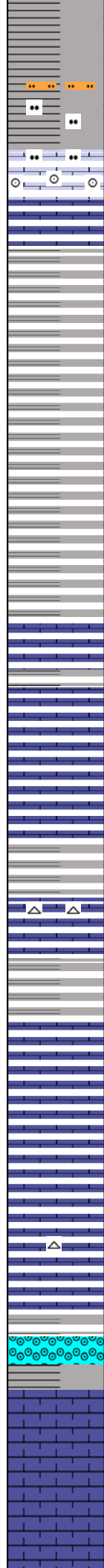
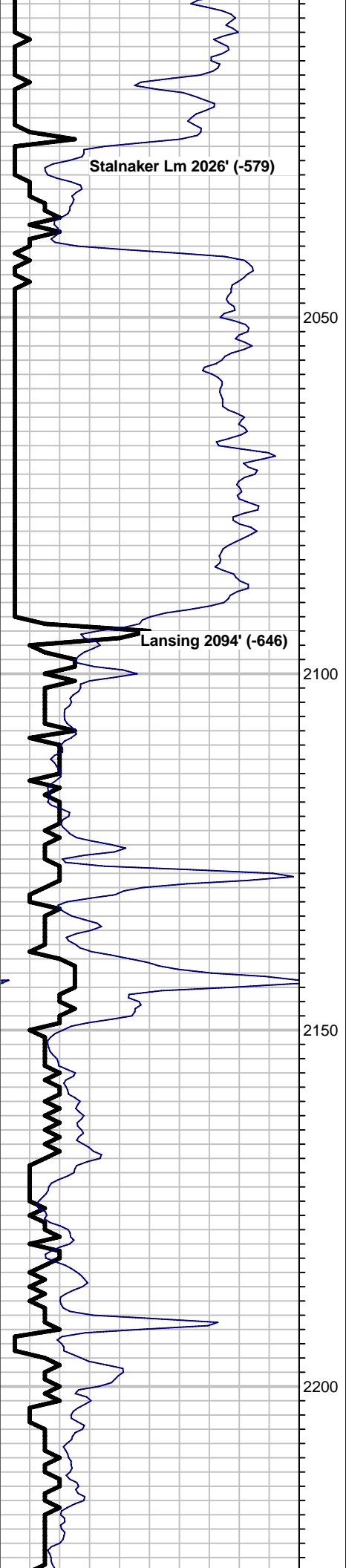




ROP (min/ft)  
Gamma (API)

10  
150





**2000'-20':** Lms & shale, about 50% mix. Lms brwn, fn xtl, no vis porosity and shale gray.

**2020'-40':** Lms, tan, vfn xtl, some silty, a few w/abndt med-crs rnd ooids, not ooml, pr-no vis porosity. Much silty shale, gry & light green.

**2040'-60':** Lms, tan, vfn xtl, ooml, med-hrd res, abndt, vry shallow ooml vugs, seems prly connected, appears vry tightly cmntd w/2ndry cmnt around vugs, gd brite yell mineral fluor, no stn, no cut, NS. Pr-fr overall porosity.

**2060'-80':** Gray shale

**2080'-2100':** Gray shale as abv. scat pcs tan-crm, vfn xtl lms, vry poor porosity.

**2100'-20':** Lms, gry to off-wht, all dense, & tight, no vis poro.

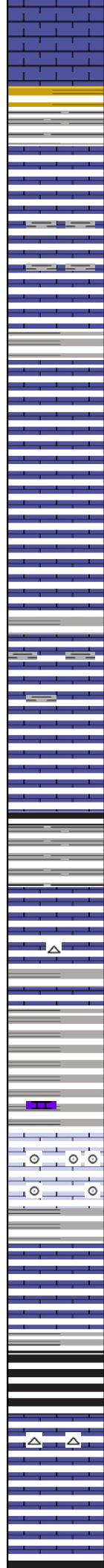
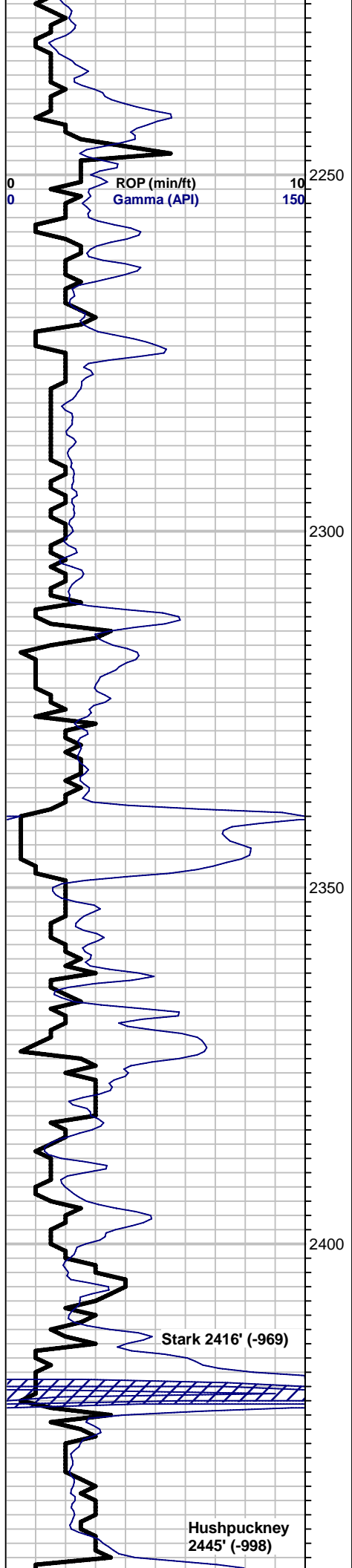
**2120'-40':** Lms, off-wht to tan, some chert, off-wht to light gry & fresh included. All vry pr-no vis porosity.

**2140'-60':** Lms, tan, some brwn, fn xtl, some chrt included, frsh. All dns, tite, no vis porosity.

**2160'-80':** Lms, lt brwn, fn xtl, vpr poro, tite, some drk gry, mshy shale.

**2180'-2200':** Lms, fn xtl, mstly tan & lt brwn, tite, some pcs w/med xtl, calcite, crmbly when crshd. Also chrt, shrp & frsh, NS.

**2200'-20':** Lms, gry-lt brwn, micro to vfn xtl, mst tite, no vis poro. Some pcs ooml lms, w/abndt shallow ooml vugs & some partially dissolved ooids, sft-med res, pr connectivity, pr overall poro & NS.



**2220'-40':** Lms, gry-tan, micro-vfn xtln, mst all tite, dense, no vis porosity. Increase in dark gry & some blk shales.

**2240'-60':** Lms, tan, gry - drk brwn, micro-vfn xtln, tite dense, vpr- no vis poro. Much blk shale, some blk carb, a few pcs grn & maroon shales

**2260'-80':** Lms, crm to lt gry, vfn xtln, dense & tite.

**2280'-2300':** Lms, crm-vfn xtln, sft, some med res, not well cmntd, pr- no vis matrix porosity, vry uniform xtln, vpr-no vis porosity.

**2300'-20':** Lms, tan-crm, vfn xtln, sft to med res, similar to abv, pr vis porosity, NS.

**2320'-40':** Lms, tan, vfn xtln, med-hrd res, no vis poro. Much shale, drk gry & blk, some sli carbonaceous.

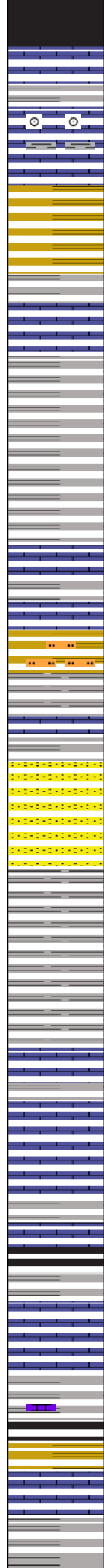
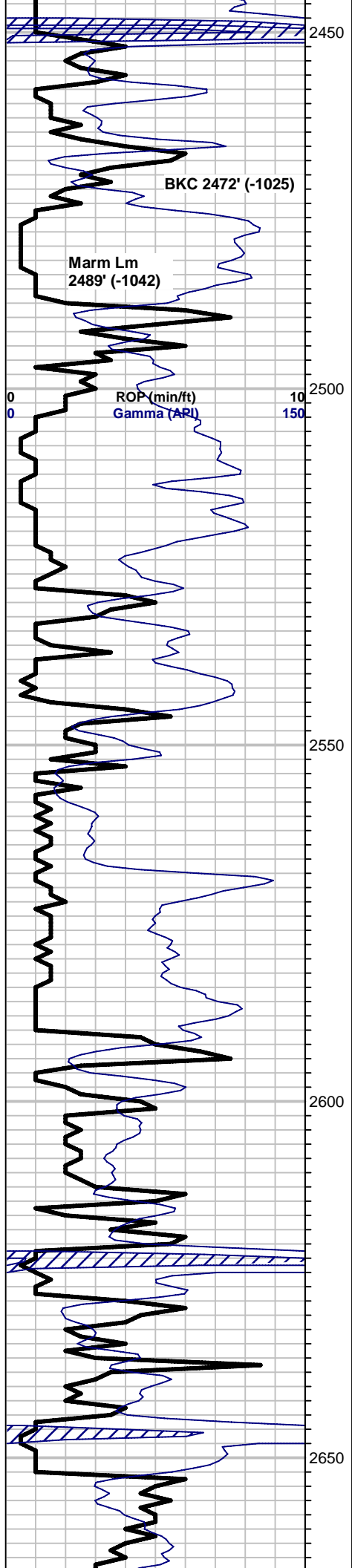
**2340'-60':** Lms, lt gry to tan, micro-vfn xtln, tite, dns, no vis porosity. Some frsh chrt, many pcs blk carb shale, fissile.

**2360'-80':** Shale, drk gry & much blk sli carb, blocky. Vry much lms, tan, vfn xtln, med res, tite, dns, vry pr-no vis porosity.

**2380'-2400':** Lms, vfn xtln, gry-tan, many pcs oolite, some ratty looking tite, several pcs lms, tan, vry sli oomldc, w.vry shallow scat vugs. Sft-med hrd res, pr vugular poro, some pcs have pr-fr intr xtln poro, NS.

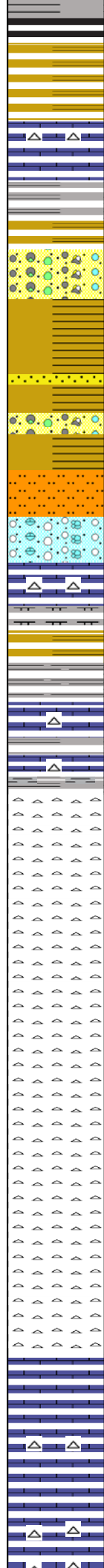
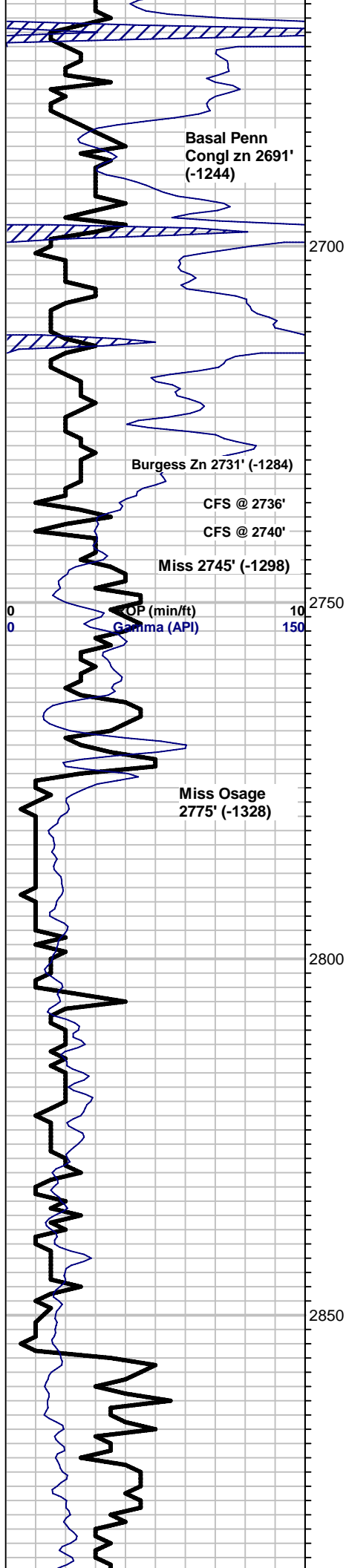
**2400'-20':** Lms, tan, vfn xtln, sft-med res, pr-fr intr xtln porosity, few- no allchms, NS. Some drk gry to blk shale, fissile.

**2420'-40':** Blk, carb shale. Mstly lms, tan-crm, vfn xtln, med res, few pcs, sli foss, mst pr-no vis porosity. Some chrt frsh.



- 2440'-60': Blk carb shale, some vry hrd res. Lms, tan-lt gry, micro-vfn xtn, tite, dns, no vis porosity.
- 2460'-80': Lms, tan, vfn xtn, many sli foss to scat ool, mst tite, dns, vpr-no vis poro, trc colored lms. a few pcs, drk grn, maroon shales.
- 2480'-90': Lms, gry, ratty, fn xtn, med res, dns, tite. Also, gry shale, some pyritic.
- 2490'-2500': Shale, drk gry, some lmy & vry firm. Also some, lms, gry, vry shaley to drk brwn, hrd, dns, all no vis porosity.
- 2500'-10': Shale, drk gry, firm-hrd.
- 2510'-20': Shale, drk gry & gry, firm.
- 2520'-30': Some lms, crm-tan, micro-vfn xtn, tite, dns, vpr-no vis porosity. Mstly, gry shale, as above.
- 2530'-40': Lms, crm to tan, micro-vfn xtn, tite & dns, vpr-no vis porosity. Some silty shale, sea green, most soft.
- 2540'-50': Some shale, lt gry, sft, platy. Also, a little sea grn & drk gry/blk shale. Mstly lms, crm to lt gry, micro xtn, tite, no vis poro.
- 2550'-60': SS, off-wht to crm, fn grnd, well srted, sub rnd - sub ang, qtz, med res, mod cmntd abt 50% pcs, w/pr-no vis mtrx poro. Abt 50% w/fr intr gran poro. N.S. Mstly, lms, gry-crm, tite, as abv.
- 2560'-70': SS, off-wht to crm, fn-med grnd, sub ang, mstly well srted. Grades from mod cmntd, firm to loose & fri in a few pcs. Mst pcs pr intr gran w/few gd poro, all NS.
- 2570'-80': SS, off-wht to crm, vfn-fn grained qtz. Appears more fn grained than abv. Well srted, qtz grains, poss ang-sub ang. Mst fr-mod well cmntd, pr-fr intr gran poro, sft-med res.
- 2580'-90': Shale, drk gry, nearly blk, mst firm, sli organic.
- 2590'-2600': Lms, crm-gry, micro xtn, tite. Mstly, shale as abv.
- 2600'-10': Shale, mstly gry, some blk, trc lt grn. Also, gry lms, micro xtn, tite, some shaley gry lms, & lmy gry shale, no vis poro.
- 2610'-20': Shale & lms, as abv. Increase in blk carb, blocky shale.
- 2620'-30': Shale, gry, w/increase in bluish grn & drk grn shales. Much lms, lt gry-tan, micro-vfn xtn, dns, tite, no vis porosity.
- 2630'-40': Lms, lt gry, some crm, micro xtn, tite, dns, no vis poro.
- 2640'-50': Lms, gry, vfn xtn, tite, dns, no vis poro. Also much gry shale.
- 2650'-60': Lms, gry-tan, vfn xtn, dns, tite, no vis poro. much shale, gry, some grn & trc reddish brwn & maroon.
- 2660'-70': Lms, gry-tan, vfn xtn, med hrd res, tite, no vis porosity. Much

-- Bit trip @ 2653'



2660'-70': Lms, gry vfn xtn, med-hrd res, tite, no vis porosity. Much gry shale, some lmy and firm.

2670'-80': Lms, gry as abv, some more shaley. Several pcs, crm, chlky, sft lms, all tite, no vis porosity. Much shale, gry-drk gry fissile & some green.

2680'-90': Lms, tan, vfn xtn, tite, dns. Also, a few pcs crm, chlky, sft lms, as abv. All no vis poro. Much grnish gry & some grn shales.

2690'-2700': Lms, tan to lt gry, micro-vfn xtn, tite, dns. Much shrp, frsh chrt, some included, w/lms, no vis porosity.

2700'-10': Lms, gry, micro to vfn xtn, tite, dns, no vis poro. Increase in gry shale.

2710'-20': Congl, vari-colored shales, prpl & grn. Also, chrts, reddish orange & sea green to drk green chrt. Vry pretty. Trc silty/sli sndy shales.

2720'-30': Vari-colored shales, gry, grn, prpl, yellow. Much chrt, yell-tan, amber & reddish, shrp. Some sli weathered. trc loose fn-med qtz, sub rnd grains in tray. None w/observable show.

2735'-40': Mstly vari-colored shales & grn silt/SS, shaly & tite. Occ scat loose qtz grains, w/evidence of inclnsns w/shaly SS. Trc med grained gry qtz SS, tite.

2740'-50': Lms, vfn-micro xtn, appears vry lt grn tint & sli silicified near the top, but grades into off-wht to lt gry tite, dns lms, No vis poro. 1 pc qtzite. appears to be pure qtz, former grains are totally fused.

2750'-60': Shale, drk gry, blk, some lt grn, rare reddish brwn, shrdy & fissile. Much lt gry allchmcl chrt, shrp & frsh. A few pcs silicified lms, w/chloriteor glauc inclnsns, & blk poss marcasite specks. Specks are similar to those seem in the speckled chert.

2760'-65': Shale, drk gry & blk, some lt grn, trc prpl, mst shary & fissile.

2765'-70': Shale & slough from abv, mixed.

2770'-75': Lms, crm, med xtn, brtl, fract easily, pr poro. a few pcs chrt, shrp & frsh, differs from abv. Much shale as abv.

2775'-82': Lms, crm, fn xtn, brtl-med res, pr vis poro. NS. Much chrt, off-wht to lt gry, shrp & frsh.

2782'-90': Lms, crm to vry lt gry, micro-vfn xtn, med-hrd res, pr-no vis poro, mst pcs. 1 pc w/rare scat intr xtn vugs. Much frsh looking lrg pcs of drk gry & grn shale

2790'-2800': Tripolitic chrt, wht to off-wht, weathered, bumpy, sft to med res. Occ pc w/scat vugs. NS. Much shrp, frsh chrt, bone colored, some lt yellow & sli weathered.

2800'-2810': Chrt, mst shrp & frsh, some sli weathrd, usually, lt yell to sli yell/grn, some peach & trc pink & wht chrt. Also much trip chrt, off-wht, highly weathrd as abv, but many partly weathrd w/yellish tint, rare scat vugs, NS.

2810'-20': Chrt, shrp & frsh, off-wht, mst have some to much splotchy yellowish tint.

2820'-30': Chrt, mst shrp & frsh, bone to off-wht, some w/varying degrees of weathering. NS.

2830'-40': Chrt, mst shrp & frsh, wht to off-wht, some peach. A few pcs tan, silicified lms, fn xtn, hrd res, w/rare scat vugs, NS.

2840'-50': Chrt, shrp & frsh, off-wht to sli yellow & vry lt tan or gry. A few pcs weathered w/rare scat vugs, NS.

2850'-60': Chrt, shrp & frsh, off-wht to bone colored.

2860'-70': Lms, vfn xtn, med-hrd res, tan/crm to lt gry, pr-no vis porosity. Some shrp & frsh chert as above.

2870'-80': Chrt, shrp & frsh. Mst lt gry-wht/frsty, semi-translucent. Also, some chrt, wht opaque, shrp & frsh.

--CFS @ 2720'

--CFS @ 2727'

**Short sample @ 2730'-35':**  
 Congl, a few loose crs qtz grains, sub rnd. 1 clst med-crs qtz snd. NS. Some siltstone, lt gry to sli grnish, med-hrd res, vfn xtn, no efvscnc, no vis poro.

--CFS @ 2750'

--CFS @ 2757'

--CFS @ 2782'

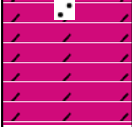




Viola 3105' (-1658)



RTD: 3117' (-1670)  
LTD: 3118' (-1671)



3105'-10' : Dolo, gry, m xln, med-hrd res, some brwnish & silty, a few w/scat sub rnd qtz grains included. Pr-no vis poro.  
3110'-17'Dolo, med xtn, hrd res, gry, lt gry, some drk brwn, many w/varying degrees of clay content in matrix, some shaly, all poor visible porosity. NS.

-- CFS @ 3110'

**Both the Misner Sand and the Hunton Dolomite calculated wet from the logs. No other shows were encountered during the drilling of the Giebler Trust #1. The well was plugged and abandoned as a dry hole on June the 20th, 2017.**