



## DRILL STEM TEST REPORT

Prepared For: **Hartman Oil Co, Inc**

10500 E Berkeley Sq Pkwy  
Ste 600  
Wichita, KS 67206

ATTN: Chris Peters

**21-17s-34w Scott,,KS**

**Wilkinson Trust Unit #1-21**

Start Date: 2017.05.30 @ 18:25:00

End Date: 2017.05.31 @ 08:18:30

Job Ticket #: 61364                      DST #: 1

Trilobite Testing, Inc  
1515 Commerce Parkway Hays, KS 67601  
ph: 785-625-4778 fax: 785-625-5620

Printed: 2017.06.02 @ 08:33:32

Hartman Oil Co, Inc

Wilkinson Trust Unit #1-21

21-17s-34w Scott,,KS

DST # 1

Marmaton

2017.05.30



**TRILOBITE  
TESTING, INC.**

# DRILL STEM TEST REPORT

Hartman Oil Co, Inc  
10500 E Berkeley Sq Pkw y  
Ste 600  
Wichita, KS 67206  
ATTN: Chris Peters

**Wilkinson Trust Unit #1-21**  
**21-17s-34w Scott,,KS**  
Job Ticket: 61364 **DST#: 1**  
Test Start: 2017.05.30 @ 18:25:00

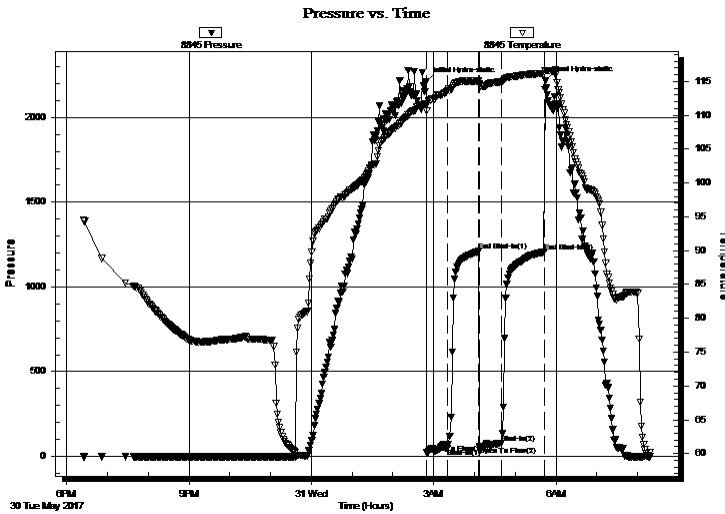
## GENERAL INFORMATION:

Formation: **Marmaton**  
Deviated: No Whipstock: ft (KB)  
Time Tool Opened: 02:49:45  
Time Test Ended: 08:18:30  
Interval: **4455.00 ft (KB) To 4540.00 ft (KB) (TVD)**  
Total Depth: 4540.00 ft (KB) (TVD)  
Hole Diameter: 7.88 inches Hole Condition: Good  
Test Type: Conventional Bottom Hole (Initial)  
Tester: Bradley Walter  
Unit No: 78  
Reference Elevations: 3112.00 ft (KB)  
3102.00 ft (CF)  
KB to GR/CF: 10.00 ft

**Serial #: 8845 Outside**  
Press@RunDepth: 77.18 psig @ 4456.00 ft (KB) Capacity: 8000.00 psig  
Start Date: 2017.05.30 End Date: 2017.05.31 Last Calib.: 1899.12.30  
Start Time: 18:25:05 End Time: 08:18:30 Time On Btm: 2017.05.31 @ 02:49:30  
Time Off Btm: 2017.05.31 @ 05:44:15

TEST COMMENT: IF: BOB @ 27 min.  
IS: No return.  
FF: BOB @ 25 min.  
FS: No return.

## PRESSURE SUMMARY



Time (Min.)	Pressure (psig)	Temp (deg F)	Annotation
0	2213.00	111.64	Initial Hydro-static
1	20.04	110.72	Open To Flow (1)
31	48.23	113.62	Shut-In(1)
77	1209.82	115.07	End Shut-In(1)
78	56.78	114.61	Open To Flow (2)
110	77.18	114.94	Shut-In(2)
173	1206.01	116.16	End Shut-In(2)
175	2215.61	116.59	Final Hydro-static

## Recovery

Length (ft)	Description	Volume (bbl)
165.00	gmco 25g 15m 60o	2.31
0.00	200' GIP	0.00

## Gas Rates

Choke (inches)	Pressure (psig)	Gas Rate (Mcf/d)



**TRILOBITE TESTING, INC.**

# DRILL STEM TEST REPORT

Hartman Oil Co, Inc  
10500 E Berkeley Sq Plw y  
Ste 600  
Wichita, KS 67206  
ATTN: Chris Peters

**Wilkinson Trust Unit #1-21**  
**21-17s-34w Scott,,KS**  
Job Ticket: 61364      **DST#: 1**  
Test Start: 2017.05.30 @ 18:25:00

## GENERAL INFORMATION:

Formation: <b>Marmaton</b>			Test Type: Conventional Bottom Hole (Initial)
Deviated: No Whipstock: ft (KB)			Tester: Bradley Walter
Time Tool Opened: 02:49:45			Unit No: 78
Time Test Ended: 08:18:30			
<b>Interval: 4455.00 ft (KB) To 4540.00 ft (KB) (TVD)</b>		Reference Elevations: 3112.00 ft (KB)	
Total Depth: 4540.00 ft (KB) (TVD)		3102.00 ft (CF)	
Hole Diameter: 7.88 inches	Hole Condition: Good	KB to GR/CF: 10.00 ft	

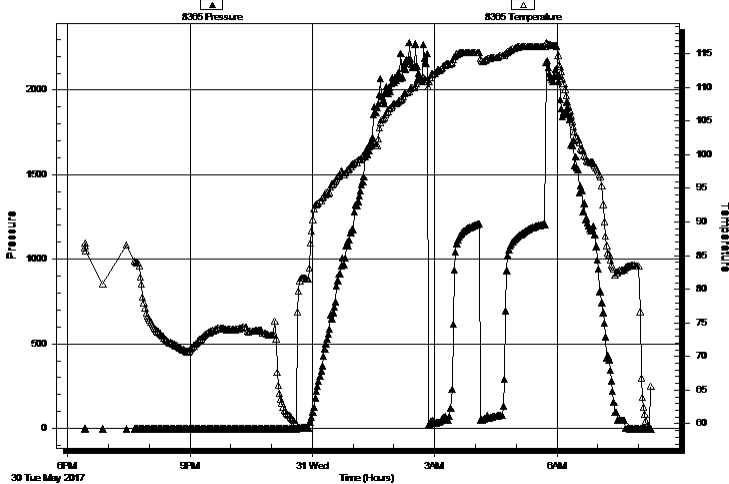
## Serial #: 8365

Inside

Press@RunDepth: psig @ 4456.00 ft (KB)	Capacity: 8000.00 psig	
Start Date: 2017.05.30	End Date: 2017.05.31	Last Calib.: 2017.05.30
Start Time: 18:25:05	End Time: 08:18:30	Time On Btm:      Time Off Btm:

TEST COMMENT: IF: BOB @ 27 min.  
IS: No return.  
FF: BOB @ 25 min.  
FS: No return.

Pressure vs. Time



## PRESSURE SUMMARY

Time (Min.)	Pressure (psig)	Temp (deg F)	Annotation

## Recovery

Length (ft)	Description	Volume (bbl)
165.00	gmco 25g 15m 60o	2.31
0.00	200' GIP	0.00

## Gas Rates

Choke (inches)	Pressure (psig)	Gas Rate (Mcf/d)



**TRILOBITE  
TESTING, INC.**

# DRILL STEM TEST REPORT

**TOOL DIAGRAM**

Hartman Oil Co, Inc  
10500 E Berkeley Sq Pkwy  
Ste 600  
Wichita, KS 67206  
ATTN: Chris Peters

**Wilkinson Trust Unit #1-21**  
**21-17s-34w Scott,,KS**  
Job Ticket: 61364      **DST#: 1**  
Test Start: 2017.05.30 @ 18:25:00

**Tool Information**

Drill Pipe:	Length: 4468.00 ft	Diameter: 3.80 inches	Volume: 62.67 bbl	Tool Weight: 2500.00 lb
Heavy Wt. Pipe:	Length: 0.00 ft	Diameter: 0.00 inches	Volume: 0.00 bbl	Weight set on Packer: 25000.00 lb
Drill Collar:	Length: 0.00 ft	Diameter: 2.25 inches	Volume: 0.00 bbl	Weight to Pull Loose: 60000.00 lb
		Total Volume: 62.67 bbl		Tool Chased 0.00 ft
Drill Pipe Above KB:	33.00 ft			String Weight: Initial 45000.00 lb
Depth to Top Packer:	4455.00 ft			Final 46000.00 lb
Depth to Bottom Packer:	ft			
Interval between Packers:	85.00 ft			
Tool Length:	105.00 ft			
Number of Packers:	2	Diameter: 6.75 inches		

Tool Comments:

<b>Tool Description</b>	<b>Length (ft)</b>	<b>Serial No.</b>	<b>Position</b>	<b>Depth (ft)</b>	<b>Accum. Lengths</b>
-------------------------	--------------------	-------------------	-----------------	-------------------	-----------------------

Change Over Sub	1.00			4436.00	
Shut In Tool	5.00			4441.00	
Hydraulic tool	5.00			4446.00	
Packer	5.00			4451.00	20.00      Bottom Of Top Packer
Packer	4.00			4455.00	
Stubb	1.00			4456.00	
Recorder	0.00	8365	Inside	4456.00	
Recorder	0.00	8845	Outside	4456.00	
Perforations	16.00			4472.00	
Change Over Sub	1.00			4473.00	
Drill Pipe	63.00			4536.00	
Change Over Sub	1.00			4537.00	
Bullnose	3.00			4540.00	85.00      Bottom Packers & Anchor

**Total Tool Length: 105.00**



**TRILOBITE  
TESTING, INC.**

# DRILL STEM TEST REPORT

## FLUID SUMMARY

Hartman Oil Co, Inc  
10500 E Berkeley Sq Pkwy  
Ste 600  
Wichita, KS 67206  
ATTN: Chris Peters

**Wilkinson Trust Unit #1-21**  
**21-17s-34w Scott,,KS**  
Job Ticket: 61364      **DST#: 1**  
Test Start: 2017.05.30 @ 18:25:00

### Mud and Cushion Information

Mud Type: Gel Chem	Cushion Type:	Oil API:	0 deg API
Mud Weight: 9.00 lb/gal	Cushion Length: ft	Water Salinity:	0 ppm
Viscosity: 55.00 sec/qt	Cushion Volume: bbl		
Water Loss: 7.99 in <sup>3</sup>	Gas Cushion Type:		
Resistivity: ohm.m	Gas Cushion Pressure: psig		
Salinity: 3000.00 ppm			
Filter Cake: 1.00 inches			

### Recovery Information

Recovery Table

Length ft	Description	Volume bbl
165.00	gmco 25g 15m 60o	2.315
0.00	200' GIP	0.000

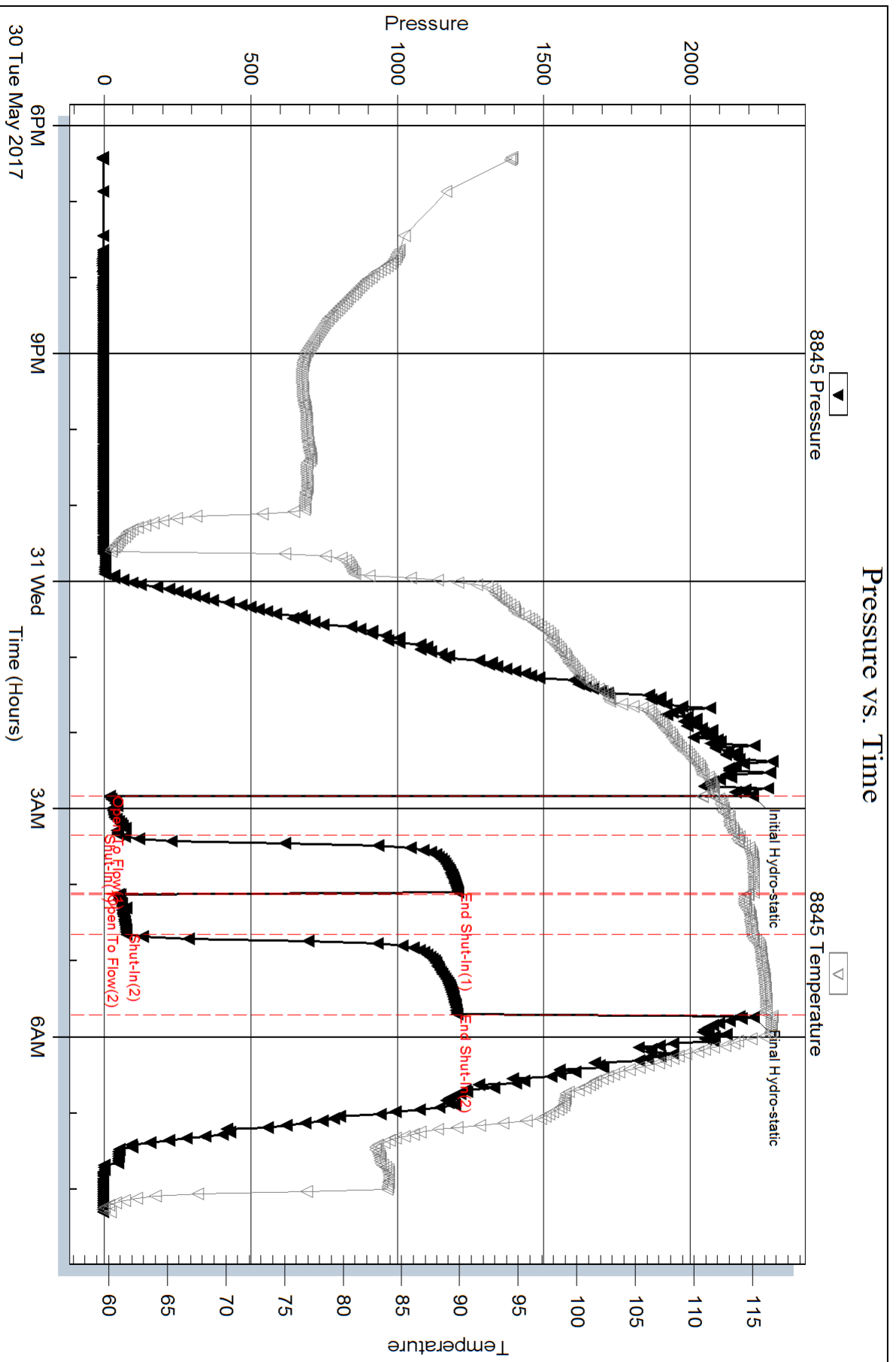
Total Length: 165.00 ft      Total Volume: 2.315 bbl

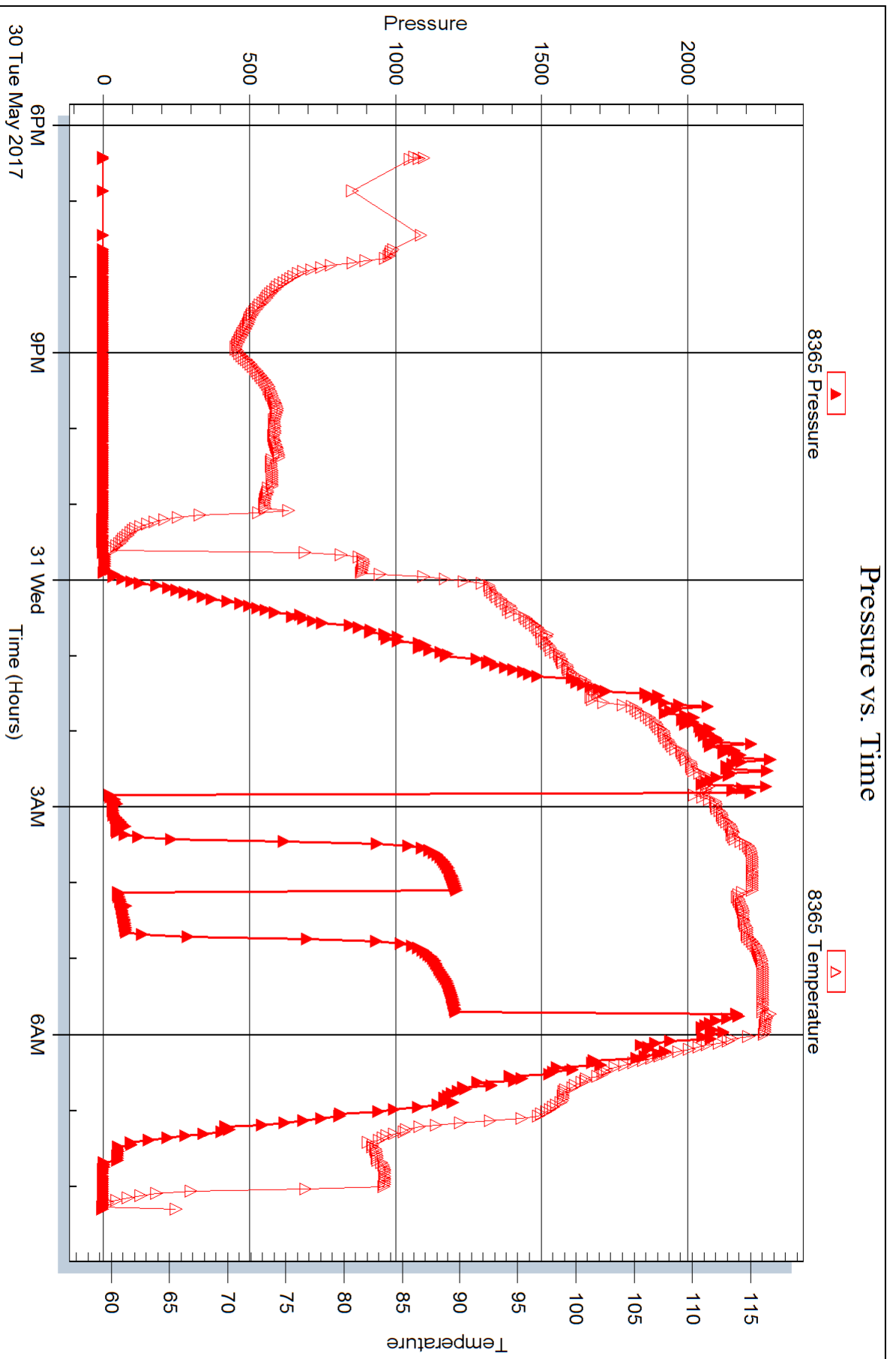
Num Fluid Samples: 0      Num Gas Bombs: 0      Serial #:

Laboratory Name:      Laboratory Location:

Recovery Comments:

### Pressure vs. Time







## DRILL STEM TEST REPORT

Prepared For: **Hartman Oil Co, Inc**

10500 E Berkeley Sq Pkwy  
Ste 600  
Wichita, KS 67206

ATTN: Chris Peters

### **21-17s-34w Scott,,KS**

#### **Wilkinson Trust Unit #1-21**

Start Date: 2017.05.30 @ 19:08:00

End Date: 2017.05.31 @ 00:36:30

Job Ticket #: 61365                      DST #: 2

Trilobite Testing, Inc  
1515 Commerce Parkway Hays, KS 67601  
ph: 785-625-4778 fax: 785-625-5620

Printed: 2017.06.02 @ 08:32:41

Hartman Oil Co, Inc

Wilkinson Trust Unit #1-21

21-17s-34w Scott,,KS

DST # 2

Pawnee

2017.05.30





**TRILOBITE TESTING, INC.**

# DRILL STEM TEST REPORT

Hartman Oil Co, Inc  
 10500 E Berkeley Sq Pkw y  
 Ste 600  
 Wichita, KS 67206  
 ATTN: Chris Peters

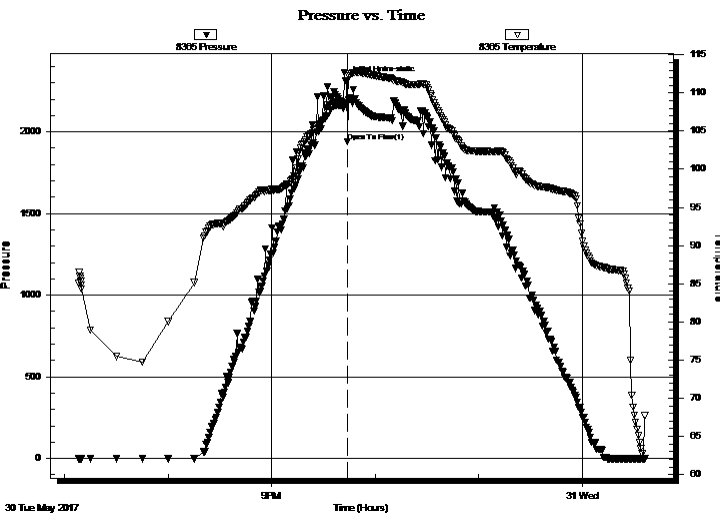
**Wilkinson Trust Unit #1-21**  
**21-17s-34w Scott,,KS**  
 Job Ticket: 61365 **DST#: 2**  
 Test Start: 2017.05.30 @ 19:08:00

## GENERAL INFORMATION:

Formation: **Pawnee**  
 Deviated: No Whipstock: ft (KB)  
 Time Tool Opened: 21:43:45  
 Time Test Ended: 00:36:30  
 Interval: **4536.00 ft (KB) To 4580.00 ft (KB) (TVD)**  
 Total Depth: 4580.00 ft (KB) (TVD)  
 Hole Diameter: 7.88 inches Hole Condition: Good  
 Test Type: Conventional Bottom Hole (Reset)  
 Tester: Bradley Walter  
 Unit No: 78  
 Reference Elevations: 3112.00 ft (KB)  
 3102.00 ft (CF)  
 KB to GR/CF: 10.00 ft

**Serial #: 8365 Inside**  
 Press@RunDepth: psig @ 4537.00 ft (KB) Capacity: 8000.00 psig  
 Start Date: 2017.05.30 End Date: 2017.05.31 Last Calib.: 2017.05.31  
 Start Time: 19:08:05 End Time: 00:36:29 Time On Btm: 2017.05.30 @ 21:43:30  
 Time Off Btm:

TEST COMMENT: Packers did not seat  
 Mis-run



## PRESSURE SUMMARY

Time (Min.)	Pressure (psig)	Temp (deg F)	Annotation
0	2313.42	108.78	Initial Hydro-static
1	1939.84	108.62	Open To Flow (1)

## Recovery

Length (ft)	Description	Volume (bbl)
165.00	Mud 100m - Misrun	2.31

\* Recovery from multiple tests

## Gas Rates

Choke (inches)	Pressure (psig)	Gas Rate (Mcf/d)



**TRILOBITE  
TESTING, INC.**

# DRILL STEM TEST REPORT

**TOOL DIAGRAM**

Hartman Oil Co, Inc  
10500 E Berkeley Sq Pkwy  
Ste 600  
Wichita, KS 67206  
ATTN: Chris Peters

**Wilkinson Trust Unit #1-21**  
**21-17s-34w Scott,,KS**  
Job Ticket: 61365 **DST#: 2**  
Test Start: 2017.05.30 @ 19:08:00

## Tool Information

Drill Pipe:	Length: 4530.00 ft	Diameter: 3.80 inches	Volume: 63.54 bbl	Tool Weight: 2500.00 lb
Heavy Wt. Pipe:	Length: 0.00 ft	Diameter: 0.00 inches	Volume: 0.00 bbl	Weight set on Packer: 30000.00 lb
Drill Collar:	Length: 0.00 ft	Diameter: 2.25 inches	Volume: 0.00 bbl	Weight to Pull Loose: 60000.00 lb
		Total Volume: 63.54 bbl		Tool Chased 0.00 ft
Drill Pipe Above KB:	14.00 ft			String Weight: Initial 50000.00 lb
Depth to Top Packer:	4536.00 ft			Final 51000.00 lb
Depth to Bottom Packer:	ft			
Interval between Packers:	44.00 ft			
Tool Length:	64.00 ft			
Number of Packers:	2	Diameter: 6.75 inches		

Tool Comments:

Tool Description	Length (ft)	Serial No.	Position	Depth (ft)	Accum. Lengths
------------------	-------------	------------	----------	------------	----------------

Change Over Sub	1.00			4517.00	
Shut In Tool	5.00			4522.00	
Hydraulic tool	5.00			4527.00	
Packer	5.00			4532.00	20.00 Bottom Of Top Packer
Packer	4.00			4536.00	
Stubb	1.00			4537.00	
Recorder	0.00	8365	Inside	4537.00	
Recorder	0.00	8845	Outside	4537.00	
Perforations	7.00			4544.00	
Change Over Sub	1.00			4545.00	
Drill Pipe	31.00			4576.00	
Change Over Sub	1.00			4577.00	
Bullnose	3.00			4580.00	44.00 Bottom Packers & Anchor

**Total Tool Length: 64.00**



**TRILOBITE  
TESTING, INC.**

# DRILL STEM TEST REPORT

**FLUID SUMMARY**

Hartman Oil Co, Inc  
10500 E Berkeley Sq Pkwy  
Ste 600  
Wichita, KS 67206  
ATTN: Chris Peters

**Wilkinson Trust Unit #1-21**  
**21-17s-34w Scott,,KS**  
Job Ticket: 61365      **DST#: 2**  
Test Start: 2017.05.30 @ 19:08:00

## Mud and Cushion Information

Mud Type: Gel Chem	Cushion Type:	Oil API:	0 deg API
Mud Weight: 9.00 lb/gal	Cushion Length: ft	Water Salinity:	0 ppm
Viscosity: 57.00 sec/qt	Cushion Volume: bbl		
Water Loss: 9.59 in <sup>3</sup>	Gas Cushion Type:		
Resistivity: ohm.m	Gas Cushion Pressure: psig		
Salinity: 6200.00 ppm			
Filter Cake: 1.00 inches			

## Recovery Information

Recovery Table

Length ft	Description	Volume bbl
165.00	Mud 100m - Misrun	2.315

Total Length: 165.00 ft      Total Volume: 2.315 bbl  
Num Fluid Samples: 0      Num Gas Bombs: 0      Serial #:  
Laboratory Name:      Laboratory Location:  
Recovery Comments:

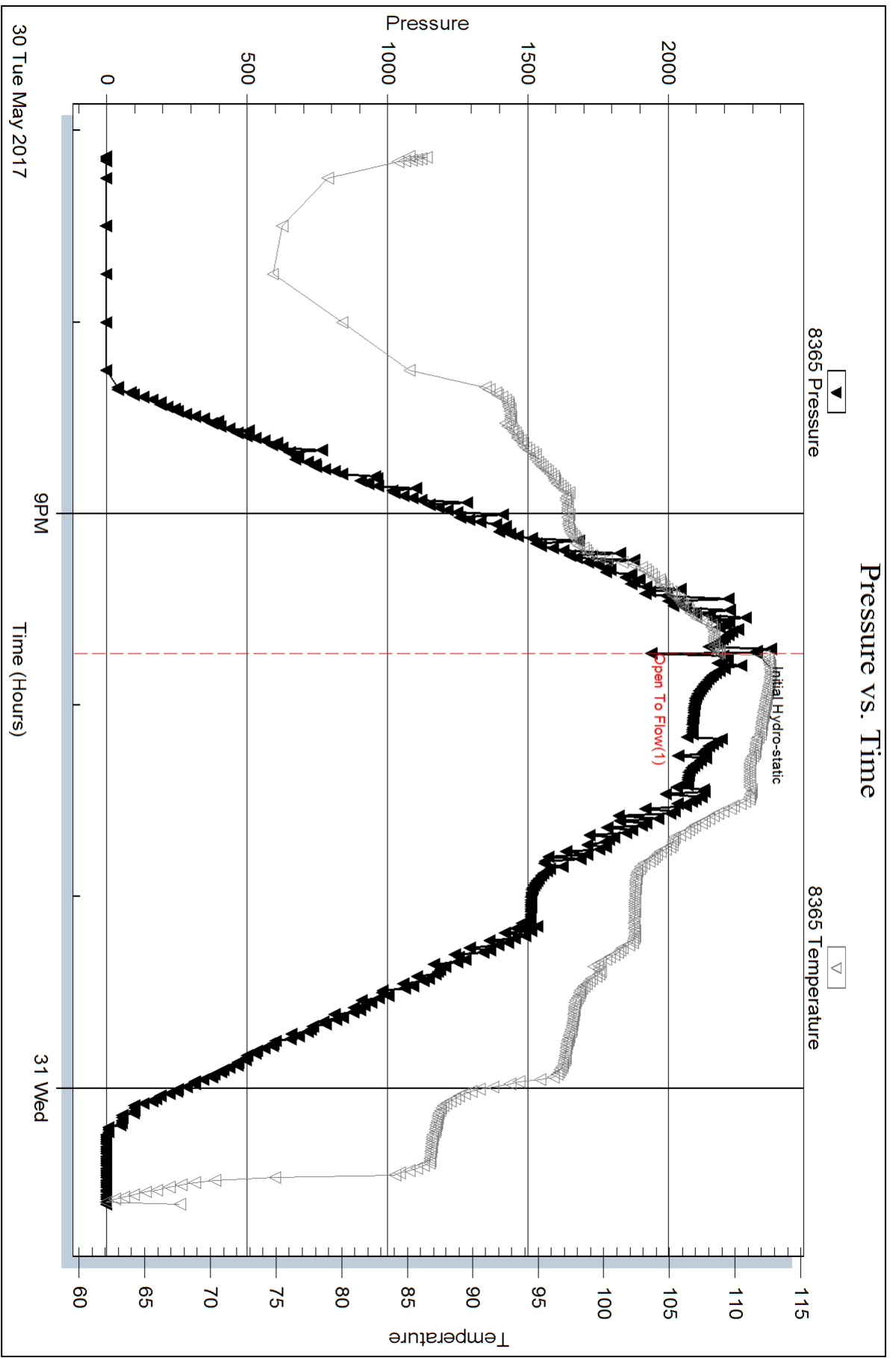
Serial #: 8365

Inside

Hartman Oil Co, Inc

21-17s-34w Scott, KS

DST Test Number: 2



Trilobite Testing, Inc

Ref. No: 61365

Printed: 2017.06.02 @ 08:32:47



## DRILL STEM TEST REPORT

Prepared For: **Hartman Oil Co, Inc**

10500 E Berkeley Sq Pkwy  
Ste 600  
Wichita, KS 67206

ATTN: Chris Peters

**21-17s-34w Scott,,KS**

**Wilkinson Trust Unit #1-21**

Start Date: 2017.05.31 @ 00:50:00

End Date: 2017.05.31 @ 07:47:45

Job Ticket #: 61366                      DST #: 3

Trilobite Testing, Inc  
1515 Commerce Parkway Hays, KS 67601  
ph: 785-625-4778 fax: 785-625-5620

Printed: 2017.06.02 @ 08:32:18

Hartman Oil Co, Inc

Wilkinson Trust Unit #1-21

21-17s-34w Scott,,KS

DST # 3

Pawnee

2017.05.31



**TRILOBITE TESTING, INC.**

# DRILL STEM TEST REPORT

Hartman Oil Co, Inc  
 10500 E Berkeley Sq Pkw y  
 Ste 600  
 Wichita, KS 67206  
 ATTN: Chris Peters

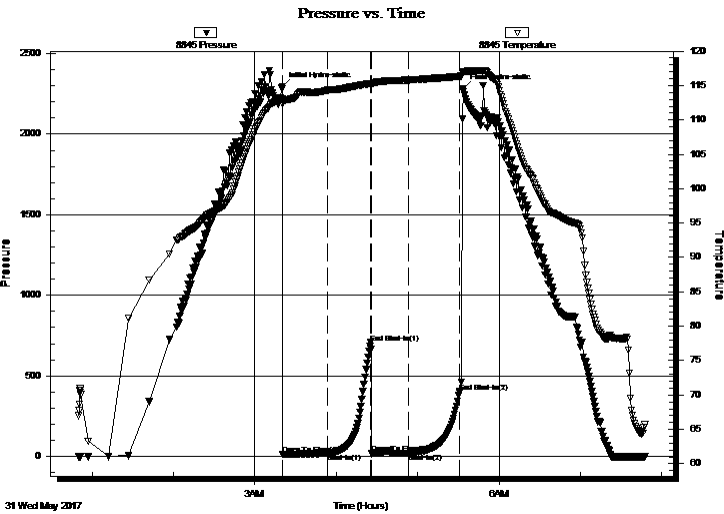
**Wilkinson Trust Unit #1-21**  
**21-17s-34w Scott,,KS**  
 Job Ticket: 61366 **DST#: 3**  
 Test Start: 2017.05.31 @ 00:50:00

## GENERAL INFORMATION:

Formation: **Pawnee**  
 Deviated: No Whipstock: ft (KB)  
 Time Tool Opened: 03:20:45  
 Time Test Ended: 07:47:45  
 Interval: **4551.00 ft (KB) To 4580.00 ft (KB) (TVD)**  
 Total Depth: 4580.00 ft (KB) (TVD)  
 Hole Diameter: 7.88 inches Hole Condition: Good  
 Test Type: Conventional Straddle (Reset)  
 Tester: Bradley Walter  
 Unit No: 78  
 Reference Elevations: 3112.00 ft (KB)  
 3102.00 ft (CF)  
 KB to GR/CF: 10.00 ft

**Serial #: 8845 Outside**  
 Press@RunDepth: 17.88 psig @ 4552.00 ft (KB) Capacity: 8000.00 psig  
 Start Date: 2017.05.31 End Date: 2017.05.31 Last Calib.: 2017.05.31  
 Start Time: 00:50:05 End Time: 07:47:44 Time On Btm: 2017.05.31 @ 03:20:15  
 Time Off Btm: 2017.05.31 @ 05:33:30

TEST COMMENT: IF: 1/2" blow .  
 IS: No return.  
 FF: Surface blow .  
 FS: No return.



## PRESSURE SUMMARY

Time (Min.)	Pressure (psig)	Temp (deg F)	Annotation
0	2295.90	113.06	Initial Hydro-static
1	13.40	112.35	Open To Flow (1)
34	20.74	114.32	Shut-In(1)
66	706.06	115.30	End Shut-In(1)
66	16.79	115.08	Open To Flow (2)
93	17.88	115.79	Shut-In(2)
131	400.69	116.33	End Shut-In(2)
134	2283.90	116.96	Final Hydro-static

## Recovery

Length (ft)	Description	Volume (bbl)
15.00	mud 100m (oil spots)	0.21

\* Recovery from multiple tests

## Gas Rates

Choke (inches)	Pressure (psig)	Gas Rate (Mcf/d)



**TRILOBITE TESTING, INC.**

# DRILL STEM TEST REPORT

Hartman Oil Co, Inc  
 10500 E Berkeley Sq Pkw y  
 Ste 600  
 Wichita, KS 67206  
 ATTN: Chris Peters

**Wilkinson Trust Unit #1-21**  
**21-17s-34w Scott,,KS**  
 Job Ticket: 61366 **DST#: 3**  
 Test Start: 2017.05.31 @ 00:50:00

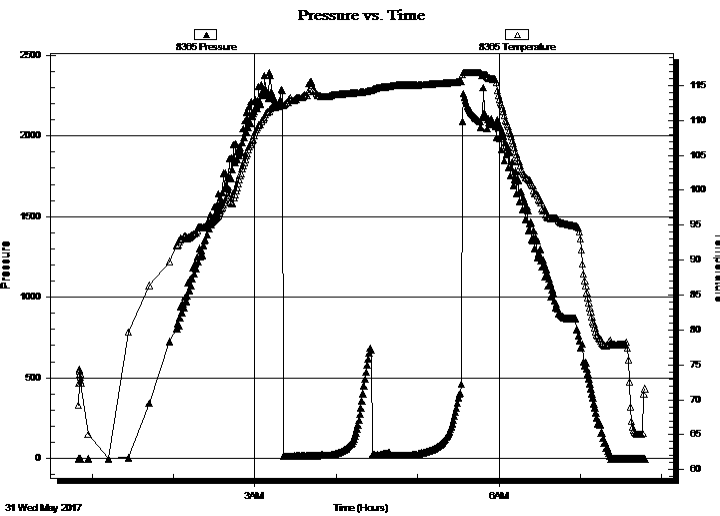
## GENERAL INFORMATION:

Formation: **Pawnee**  
 Deviated: No Whipstock: ft (KB)  
 Time Tool Opened: 03:20:45  
 Time Test Ended: 07:47:45  
 Interval: **4551.00 ft (KB) To 4580.00 ft (KB) (TVD)**  
 Total Depth: 4580.00 ft (KB) (TVD)  
 Hole Diameter: 7.88 inches Hole Condition: Good  
 Test Type: Conventional Straddle (Reset)  
 Tester: Bradley Walter  
 Unit No: 78  
 Reference Elevations: 3112.00 ft (KB)  
 3102.00 ft (CF)  
 KB to GR/CF: 10.00 ft

## Serial #: 8365 Inside

Press@RunDepth: psig @ 4552.00 ft (KB) Capacity: 8000.00 psig  
 Start Date: 2017.05.31 End Date: 2017.05.31 Last Calib.: 2017.05.31  
 Start Time: 00:50:05 End Time: 07:47:44 Time On Btm:  
 Time Off Btm:

TEST COMMENT: IF: 1/2" blow.  
 IS: No return.  
 FF: Surface blow.  
 FS: No return.



## PRESSURE SUMMARY

Time (Min.)	Pressure (psig)	Temp (deg F)	Annotation

## Recovery

Length (ft)	Description	Volume (bbl)
15.00	mud 100m (oil spots)	0.21

\* Recovery from multiple tests

## Gas Rates

Choke (inches)	Pressure (psig)	Gas Rate (Mcf/d)



**TRILOBITE  
TESTING, INC.**

# DRILL STEM TEST REPORT

**TOOL DIAGRAM**

Hartman Oil Co, Inc  
10500 E Berkeley Sq Pkwy  
Ste 600  
Wichita, KS 67206  
ATTN: Chris Peters

**Wilkinson Trust Unit #1-21**  
**21-17s-34w Scott,,KS**  
Job Ticket: 61366 **DST#: 3**  
Test Start: 2017.05.31 @ 00:50:00

## Tool Information

Drill Pipe:	Length: 4564.00 ft	Diameter: 3.80 inches	Volume: 64.02 bbl	Tool Weight: 2500.00 lb
Heavy Wt. Pipe:	Length: 0.00 ft	Diameter: 0.00 inches	Volume: 0.00 bbl	Weight set on Packer: 25000.00 lb
Drill Collar:	Length: 0.00 ft	Diameter: 2.25 inches	Volume: 0.00 bbl	Weight to Pull Loose: 55000.00 lb
			<u>Total Volume: 64.02 bbl</u>	Tool Chased 0.00 ft
Drill Pipe Above KB:	33.00 ft			String Weight: Initial 45000.00 lb
Depth to Top Packer:	4551.00 ft			Final 45000.00 lb
Depth to Bottom Packer:	4580.00 ft			
Interval between Packers:	29.00 ft			
Tool Length:	49.00 ft			
Number of Packers:	2	Diameter: 6.75 inches		

Tool Comments:

Tool Description	Length (ft)	Serial No.	Position	Depth (ft)	Accum. Lengths
Change Over Sub	1.00			4532.00	
Shut In Tool	5.00			4537.00	
Hydraulic tool	5.00			4542.00	
Packer	5.00			4547.00	20.00 Bottom Of Top Packer
Packer	4.00			4551.00	
Stubb	1.00			4552.00	
Recorder	0.00	8365	Inside	4552.00	
Recorder	0.00	8845	Outside	4552.00	
Perforations	25.00			4577.00	
Bullnose	3.00			4580.00	29.00 Bottom Packers & Anchor
<b>Total Tool Length:</b>	<b>49.00</b>				





**TRILOBITE  
TESTING, INC.**

# DRILL STEM TEST REPORT

**FLUID SUMMARY**

Hartman Oil Co, Inc  
10500 E Berkeley Sq Pkwy  
Ste 600  
Wichita, KS 67206  
ATTN: Chris Peters

**Wilkinson Trust Unit #1-21**  
**21-17s-34w Scott,,KS**  
Job Ticket: 61366      **DST#: 3**  
Test Start: 2017.05.31 @ 00:50:00

## Mud and Cushion Information

Mud Type: Gel Chem	Cushion Type:	Oil API:	0 deg API
Mud Weight: 9.00 lb/gal	Cushion Length: ft	Water Salinity:	0 ppm
Viscosity: 57.00 sec/qt	Cushion Volume: bbl		
Water Loss: 9.59 in <sup>3</sup>	Gas Cushion Type:		
Resistivity: ohm.m	Gas Cushion Pressure: psig		
Salinity: 6200.00 ppm			
Filter Cake: 1.00 inches			

## Recovery Information

Recovery Table

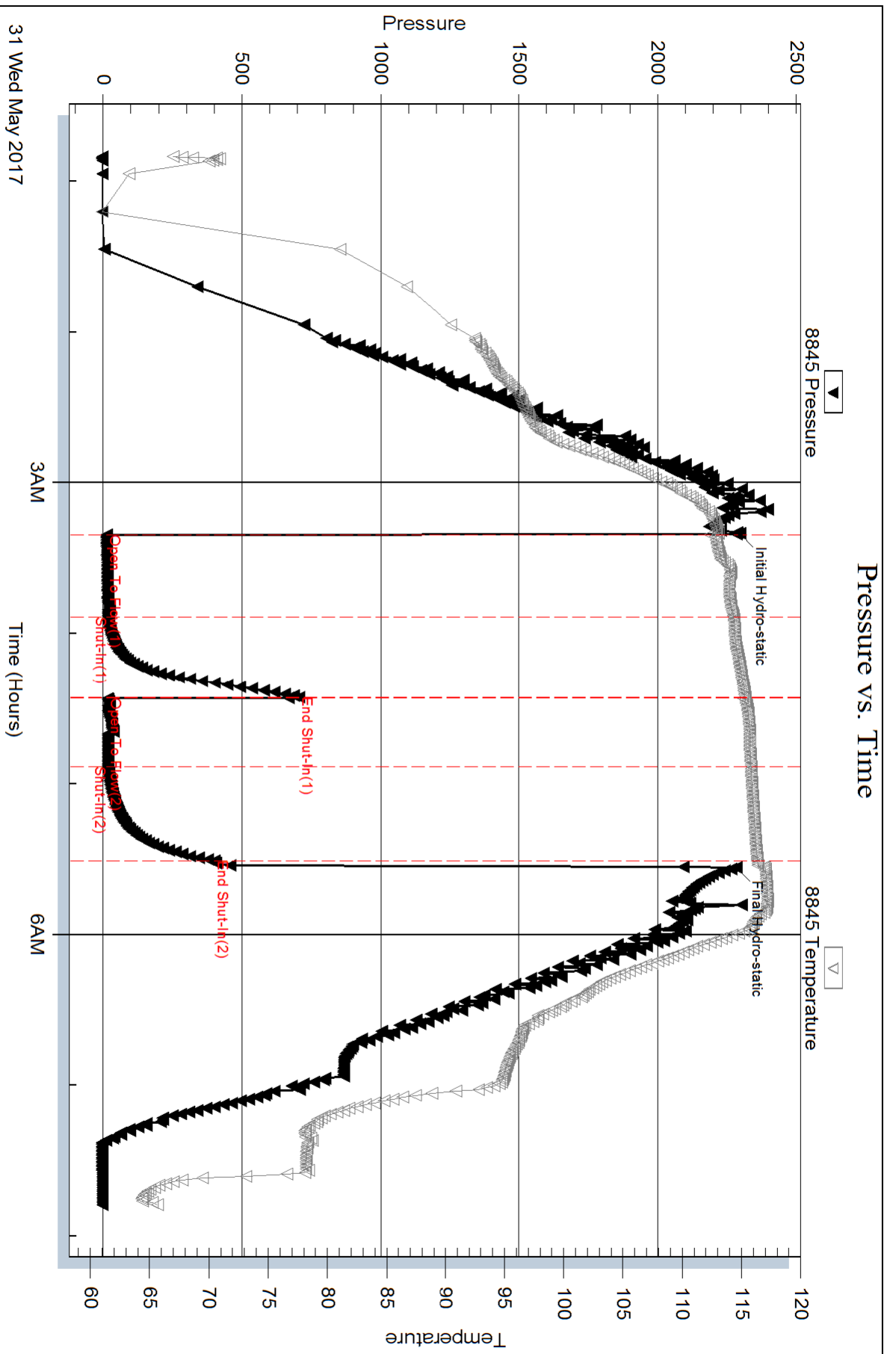
Length ft	Description	Volume bbl
15.00	mud 100m (oil spots)	0.210

Total Length: 15.00 ft      Total Volume: 0.210 bbl

Num Fluid Samples: 0      Num Gas Bombs: 0      Serial #:

Laboratory Name:      Laboratory Location:

Recovery Comments:



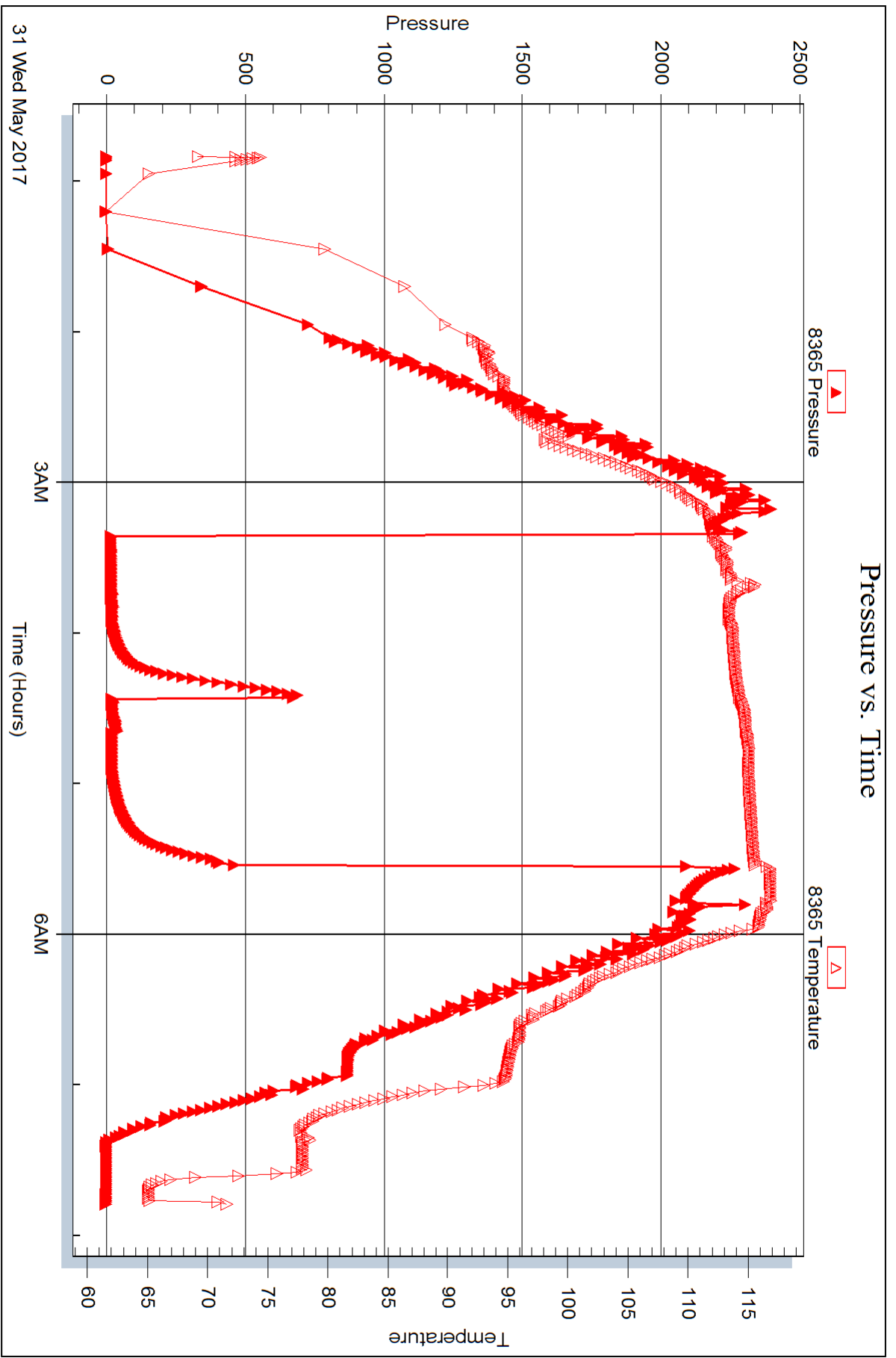
Serial #: 8365

Inside

Hartman Oil Co, Inc

21-17s-34w Scott, KS

DST Test Number: 3



Triobite Testing, Inc

Ref. No: 61366

Printed: 2017.06.02 @ 08:32:19



# TRILOBITE TESTING INC.

1515 Commerce Parkway • Hays, Kansas 67601

## Test Ticket

NO. 61364

Well Name & No. Wilkinson Trust Unit #1-21 Test No. 1 Date 5/30/2017  
 Company Hartman Oil Co, Inc Elevation 3112 KB 302 GL  
 Address 10500 E Berkely Sq Pkwy Ste 600 Wichita, KS 67606  
 Co. Rep / Geo. Chris Peters Rig Southwind #1  
 Location: Sec. 21 Twp. 17S Rge. 34W Co. Scott State KS

Interval Tested 4455-4540 Zone Tested Marmaton  
 Anchor Length 85 Drill Pipe Run 4465 Mud Wt. 9.0  
 Top Packer Depth 4450 Drill Collars Run 0 Vis SS  
 Bottom Packer Depth 4455 Wt. Pipe Run 0 WL 8.0  
 Total Depth 4540 Chlorides 3000 ppm System LCM 2<sup>#</sup>

Blow Description IF 200 @ 27 min  
ISS No return.  
FP BOB @ 25 min.  
FS No return.

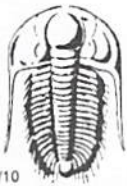
Rec	Feet of	%gas	%oil	%water	%mud
<u>165</u>	<u>6 MCO</u>	<u>25</u>	<u>60</u>	<u>15</u>	
Rec	Feet of	%gas	%oil	%water	%mud
Rec	Feet of	%gas	%oil	%water	%mud
Rec	Feet of	%gas	%oil	%water	%mud
Rec	Feet of	%gas	%oil	%water	%mud

Rec Total 165 BHT 117 Gravity — API RW — @ — °F Chlorides — ppm

(A) Initial Hydrostatic	<u>2213</u>	<input checked="" type="checkbox"/> Test	<u>1150</u>	T-On Location	<u>1815 5/27</u>
(B) First Initial Flow	<u>20</u>	<input type="checkbox"/> Jars		T-Started	<u>1825</u>
(C) First Final Flow	<u>48</u>	<input type="checkbox"/> Safety Joint		T-Open	<u>0250</u>
(D) Initial Shut-In	<u>1210</u>	<input type="checkbox"/> Circ Sub		T-Pulled	<u>0540</u>
(E) Second Initial Flow	<u>57</u>	<input type="checkbox"/> Hourly Standby		T-Out	<u>0818</u>
(F) Second Final Flow	<u>77</u>	<input checked="" type="checkbox"/> Mileage	<u>3544 26.25</u>	Comments	
(G) Final Shut-In	<u>1206</u>	<input type="checkbox"/> Sampler			
(H) Final Hydrostatic	<u>2216</u>	<input type="checkbox"/> Straddle		<input type="checkbox"/> Ruined Shale Packer	
Initial Open	<u>30</u>	<input type="checkbox"/> Shale Packer		<input type="checkbox"/> Ruined Packer	
Initial Shut-In	<u>45</u>	<input type="checkbox"/> Extra Packer		<input type="checkbox"/> Extra Copies	
Final Flow	<u>30</u>	<input type="checkbox"/> Extra Recorder		Sub Total	<u>0</u>
Final Shut-In	<u>60</u>	<input type="checkbox"/> Day Standby		Total	<u>1176.25</u>
		<input type="checkbox"/> Accessibility		MP/DST Disc't	
		Sub Total	<u>1176.25</u>		

Approved By \_\_\_\_\_ Our Representative [Signature]

Trilobite Testing Inc. shall not be liable for damaged of any kind of the property or personnel of the one for whom a test is made, or for any loss suffered or sustained, directly or indirectly, through the use of its equipment, or its statements or opinion concerning the results of any test, tools lost or damaged in the hole shall be paid for at cost by the party for whom the test is made.



# TRILOBITE TESTING INC.

1515 Commerce Parkway • Hays, Kansas 67601

## Test Ticket

NO. **61365**

4/10

Well Name & No. Wilkinson Trust Unit #1-21 Test No. 2 Date 5/30/2017  
 Company Hartman Oil Co, Inc Elevation 3112 KB 3102 GL  
 Address 10500 E Berkely Sq Pkwy Wichita, KS 67606  
 Co. Rep / Geo. Chris Peters Rig Southwind #1  
 Location: Sec. 21 Twp. 17S Rge. 34W Co. Scott State KS

Interval Tested 4536 - 4580 Zone Tested Law 10e  
 Anchor Length 44 Drill Pipe Run 4530 Mud Wt. 9.0  
 Top Packer Depth 4531 Drill Collars Run — Vis 57  
 Bottom Packer Depth 4536 Wt. Pipe Run — WL 9.6  
 Total Depth 4580 Chlorides 6200 ppm System LCM 2#

Blow Description Packers did not seat

Rec	Feet of	%gas	%oil	%water	%mud
Rec	Feet of	%gas	%oil	%water	%mud
Rec	Feet of	%gas	%oil	%water	%mud
Rec	Feet of	%gas	%oil	%water	%mud
Rec	Feet of	%gas	%oil	%water	%mud

Rec Total \_\_\_\_\_ BHT \_\_\_\_\_ Gravity \_\_\_\_\_ API RW \_\_\_\_\_ @ \_\_\_\_\_ °F Chlorides \_\_\_\_\_ ppm

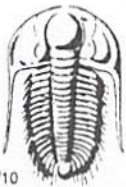
(A) Initial Hydrostatic \_\_\_\_\_  Test 950 T-On Location 1830  
 (B) First Initial Flow \_\_\_\_\_  Jars \_\_\_\_\_ T-Started 1907  
 (C) First Final Flow \_\_\_\_\_  Safety Joint \_\_\_\_\_ T-Open 2130  
 (D) Initial Shut-In \_\_\_\_\_  Circ Sub \_\_\_\_\_ T-Pulled 2130  
 (E) Second Initial Flow \_\_\_\_\_  Hourly Standby \_\_\_\_\_ T-Out 0037  
 (F) Second Final Flow \_\_\_\_\_  Mileage 35 RT 26.25 Comments \_\_\_\_\_  
 (G) Final Shut-In \_\_\_\_\_  Sampler \_\_\_\_\_  
 (H) Final Hydrostatic \_\_\_\_\_  Straddle \_\_\_\_\_  Ruined Shale Packer \_\_\_\_\_  
 Shale Packer \_\_\_\_\_  Ruined Packer \_\_\_\_\_

Initial Open \_\_\_\_\_  Extra Packer \_\_\_\_\_  Extra Copies \_\_\_\_\_  
 Initial Shut-In \_\_\_\_\_  Extra Recorder \_\_\_\_\_ Sub Total 0  
 Final Flow \_\_\_\_\_  Day Standby \_\_\_\_\_ Total 976.25  
 Final Shut-In \_\_\_\_\_  Accessibility \_\_\_\_\_ MP/DST Disc't \_\_\_\_\_  
 Sub Total 976.25

Approved By \_\_\_\_\_ Our Representative [Signature]

Trilobite Testing Inc. shall not be liable for damaged of any kind of the property or personnel of the one for whom a test is made, or for any loss suffered or sustained, directly or indirectly, through the use of its equipment, or its statements or opinion concerning the results of any test, tools lost or damaged in the hole shall be paid for at cost by the party for whom the test is made.





# TRILOBITE TESTING INC.

1515 Commerce Parkway • Hays, Kansas 67601

## Test Ticket

NO. 61366

4/10

Well Name & No. Wilkinson Trust Unit #1-21 Test No. 3 Date 5/31/2017  
 Company Hartman O.I Co, Inc Elevation 3112 KB 3102 GL  
 Address 10500 E Berkelly Sq Pkwy Ste 600 Wichita, KS 67206  
 Co. Rep / Geo. Chris Peters Rig Southwind #1  
 Location: Sec. 21 Twp. 17S Rge. 34W Co. Scott State Ks

Interval Tested 4551 - 4580 Zone Tested Pawnee  
 Anchor Length 29' Drill Pipe Run 4564 Mud Wt. 9.0  
 Top Packer Depth 4546 Drill Collars Run 0 Vis 57  
 Bottom Packer Depth 4551 Wt. Pipe Run 0 WL 9.6  
 Total Depth 4580 Chlorides 6200 ppm System LCM 2#

Blow Description IF 1/2" blow  
ISI No return  
FF Surface blow  
FSE No return

Rec	Feet of	%gas	%oil	%water	%mud
<u>15</u>	<u>MOP</u>			<u>100</u>	
	<u>Oil Spots</u>				

Rec Total 15 BHT 117 Gravity — API RW — @ — F Chlorides — ppm

(A) Initial Hydrostatic 2296  Test 1150 T-On Location 0040  
 (B) First Initial Flow 13  Jars — T-Started 0050  
 (C) First Final Flow 21  Safety Joint — T-Open 0320  
 (D) Initial Shut-In 706  Circ Sub 1/4 T-Pulled 0525  
 (E) Second Initial Flow 17  Hourly Standby — T-Out 0748  
 (F) Second Final Flow 18  Mileage — Comments —  
 (G) Final Shut-In 401  Sampler —  
 (H) Final Hydrostatic 2284  Straddle —  Ruined Shale Packer —  
 Shale Packer —  Ruined Packer —

Initial Open 30  Extra Packer —  Extra Copies —  
 Initial Shut-In 30  Extra Recorder — Sub Total 0  
 Final Flow 30  Day Standby — Total 1150  
 Final Shut-In 30  Accessibility — MP/DST Disc't —  
 Sub Total 1150

Approved By \_\_\_\_\_ Our Representative [Signature]

Trilobite Testing Inc. shall not be liable for damaged of any kind of the property or personnel of the one for whom a test is made, or for any loss suffered or sustained, directly or indirectly, through the use of its equipment, or its statements or opinion concerning the results of any test, tools lost or damaged in the hole shall be paid for at cost by the party for whom the test is made.