



TEMPORARY ABANDONMENT WELL APPLICATION

OPERATOR: License# _____
 Name: _____
 Address 1: _____
 Address 2: _____
 City: _____ State: _____ Zip: _____ + _____
 Contact Person: _____
 Phone: (_____) _____
 Contact Person Email: _____
 Field Contact Person: _____
 Field Contact Person Phone: (_____) _____

API No. 15- _____
 Spot Description: _____
 _____ - _____ - _____ - _____ Sec. _____ Twp. _____ S. R. _____ E W
 _____ feet from N / S Line of Section
 _____ feet from E / W Line of Section
 GPS Location: Lat: _____, Long: _____
(e.g. xx.xxxxx) (e.g. -xxx.xxxxx)
 Datum: NAD27 NAD83 WGS84
 County: _____ Elevation: _____ GL KB
 Lease Name: _____ Well #: _____
 Well Type: (check one) Oil Gas OG WSW Other: _____
 SWD Permit #: _____ ENHR Permit #: _____
 Gas Storage Permit #: _____
 Spud Date: _____ Date Shut-In: _____

	Conductor	Surface	Production	Intermediate	Liner	Tubing
Size						
Setting Depth						
Amount of Cement						
Top of Cement						
Bottom of Cement						

Casing Fluid Level from Surface: _____ How Determined? _____ Date: _____
 Casing Squeeze(s): _____ to _____ w / _____ sacks of cement, _____ to _____ w / _____ sacks of cement. Date: _____
(top) (bottom) (top) (bottom)
 Do you have a valid Oil & Gas Lease? Yes No
 Depth and Type: Junk in Hole at _____ Tools in Hole at _____ Casing Leaks: Yes No Depth of casing leak(s): _____
(depth) (depth)
 Type Completion: ALT. I ALT. II Depth of: DV Tool: _____ w / _____ sacks of cement Port Collar: _____ w / _____ sack of cement
(depth) (depth)
 Packer Type: _____ Size: _____ Inch Set at: _____ Feet
 Total Depth: _____ Plug Back Depth: _____ Plug Back Method: _____

Geological Data:

Formation Name	Formation Top	Formation Base	Completion Information
1. _____	At: _____	to _____ Feet	Perforation Interval _____ to _____ Feet or Open Hole Interval _____ to _____ Feet
2. _____	At: _____	to _____ Feet	Perforation Interval _____ to _____ Feet or Open Hole Interval _____ to _____ Feet

UNDER PENALTY OF PERJURY I HEREBY ATTEST THAT THE INFORMATION CONTAINED HEREIN IS TRUE AND CORRECT TO THE BEST OF MY KNOWLEDGE

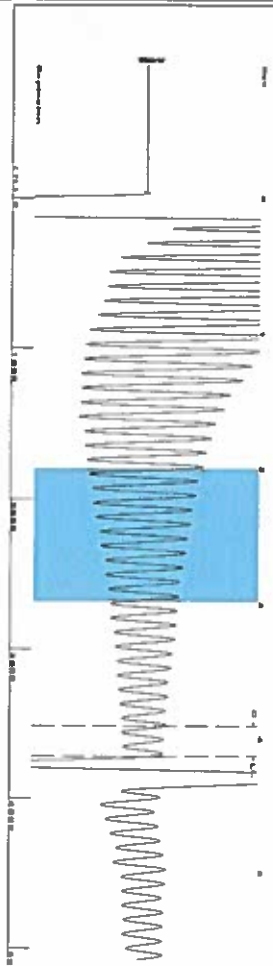
Submitted Electronically

Do NOT Write in This Space - KCC USE ONLY	Date Tested: _____	Results: _____	Date Plugged: _____	Date Repaired: _____	Date Put Back in Service: _____
	Review Completed by: _____ Comments: _____				
TA Approved: <input type="checkbox"/> Yes <input type="checkbox"/> Denied Date: _____					

Mail to the Appropriate KCC Conservation Office:

	KCC District Office #1 - 210 E. Frontview, Suite A, Dodge City, KS 67801	Phone 620.682.7933
	KCC District Office #2 - 3450 N. Rock Road, Building 600, Suite 601, Wichita, KS 67226	Phone 316.337.7400
	KCC District Office #3 - 1500 SW Seventh Steet, Chanute, KS 66720	Phone 620.432.2300
	KCC District Office #4 - 2301 E. 13th Street, Hays, KS 67601-2651	Phone 785.261.6250

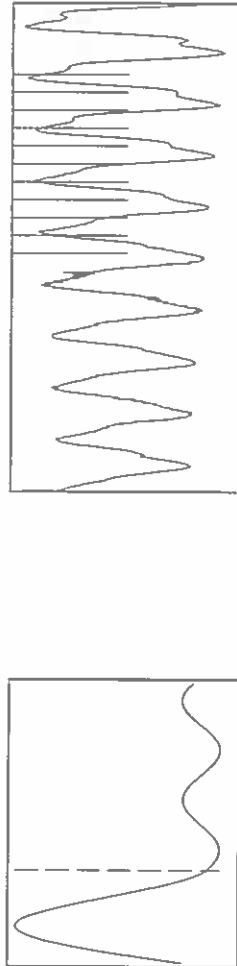
Group: Ulysses East Well: NEMU 401W (acquired on: 07/18/17 13:27:02)



Filter Type High Pass
Manual Acoustic Velocity 1722.83 ft/s
Automatic Collar Count Yes
Manual JTS:sec 27.1739

Time 4.138 sec
Joints 117.35 Jts
Depth 3719.98 ft

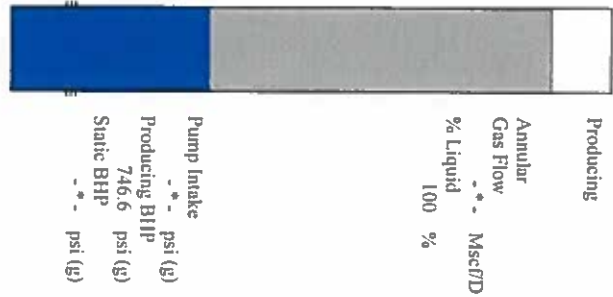
1.20 to 3.0 (Sec) |



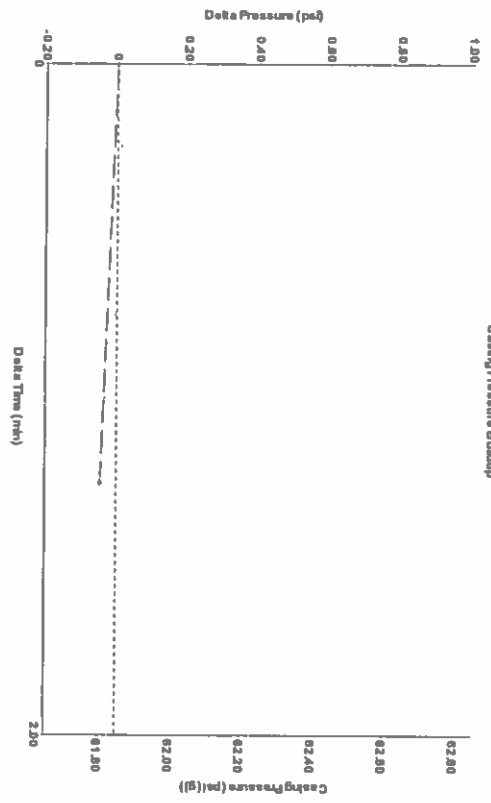
Analysis Method: Automatic

Group: Ulysses East Well: NEMU 401W (acquired on: 07/18/17 13:27:02)

Production	Current	Potential	Casing Pressure	Producing
Oil	40 deg API	BBLD	61.8 psi (g)	Pump Intake
Water	1.05 Sp.Gr.H2O	BBLD	Casing Pressure Buildup	psi (g)
Gas	0.55 Sp.Gr.AIR	Misc/D	-0.045 psi	Producing BHP
IPR Method		Vogel	1.25 min	746.6 psi (g)
PBHP/SBHP			Gas/Liquid Interface Pressure	Static BHP
Production Efficiency	0.0		67.4 psi (g)	psi (g)
Liquid Level Depth				
3719.98 ft				
Pump Intake Depth				
Formation Depth				
5214.00 ft				
Acoustic Velocity	1797.96 ft/s			
Formation Submergence				
Total Gaseous Liquid Column HIT (TVD)	1494 ft			
Equivalent Gas Free Liquid HIT (TVD)	1494 ft			
Acoustic Test				

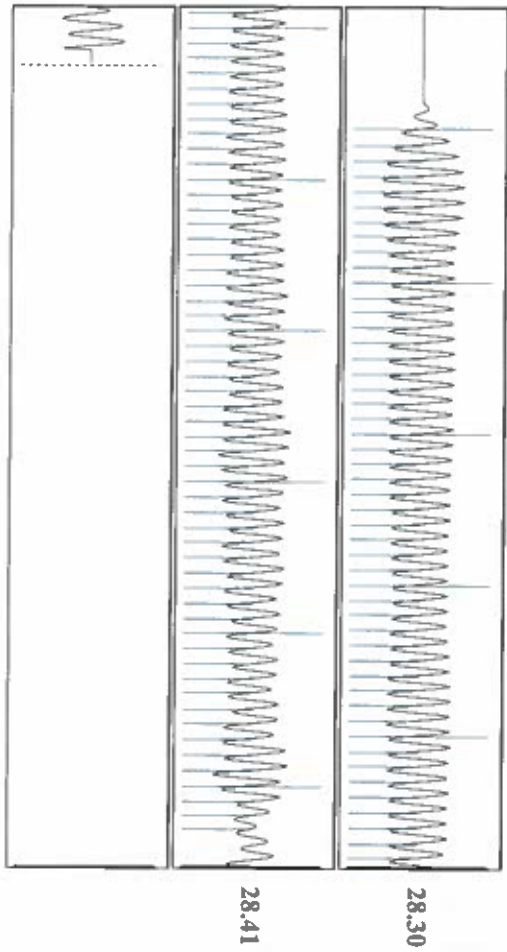


Group: Ulysses East Well: NEMU 401W (acquired on: 07/18/17 13:27:02)



Change in Pressure -0.04 psi
Change in Time 1.25 min
PTI 4679
Range
0 - ? psi

Group: Ulysses East Well: NEMU 401W (acquired on: 07/18/17 13:27:02)



Acoustic Velocity 1797.96 ft/s
Joints Per Second 28.359 jts/sec
Depth to liquid level 3719.98 ft
Automatic Collar Count Yes

Joints counted 103
Joints to liquid level 117.35
Filter Width 25.1739
Time to 1st Collar 0.28 29.1739 3.912

Conservation Division
District Office No. 1
210 E. Frontview, Suite A
Dodge City, KS 67801



Phone: 620-682-7933
<http://kcc.ks.gov/>

Pat Apple, Chairman
Shari Feist Albrecht, Commissioner
Jay Scott Emler, Commissioner

Sam Brownback, Governor

July 25, 2017

Katherine McClurkan
Merit Energy Company, LLC
13727 Noel Road, Suite 1200
Dallas, TX 75240

Re: Temporary Abandonment
API 15-081-20490-00-02
North Eubank Morrow Unit 401W
SW/4 Sec.34-27S-34W
Haskell County, Kansas

Dear Katherine McClurkan:

"Your temporary abandonment (TA) application for the well listed above has been approved. In accordance with K.A.R. 82-3-111 the TA status of this well will expire 07/25/2018.

- * If you return this well to service or plug it, please notify the District Office.
- * If you sell this well you are required to file a Transfer of Operator form, T-1.
- * If the well will remain temporarily abandoned, you must submit a new TA application, CP-111, before 07/25/2018.

You may contact me at the number above if you have questions.

Very truly yours,

Michael Maier"