

Fall & Associates

Stake and Elevation Service

P.O. Box 222

Pretty Prairie, KS. 67570

785-243-7506

Date 6-1-17

Invoice Number 0531171

MURFIN DRILLING

1-19

Carolyn 'B'

Operator

Number

Farm Name

Rawlins-KS

19

1s

36w

330'FSL 330'FWL

County-State

S

T

R

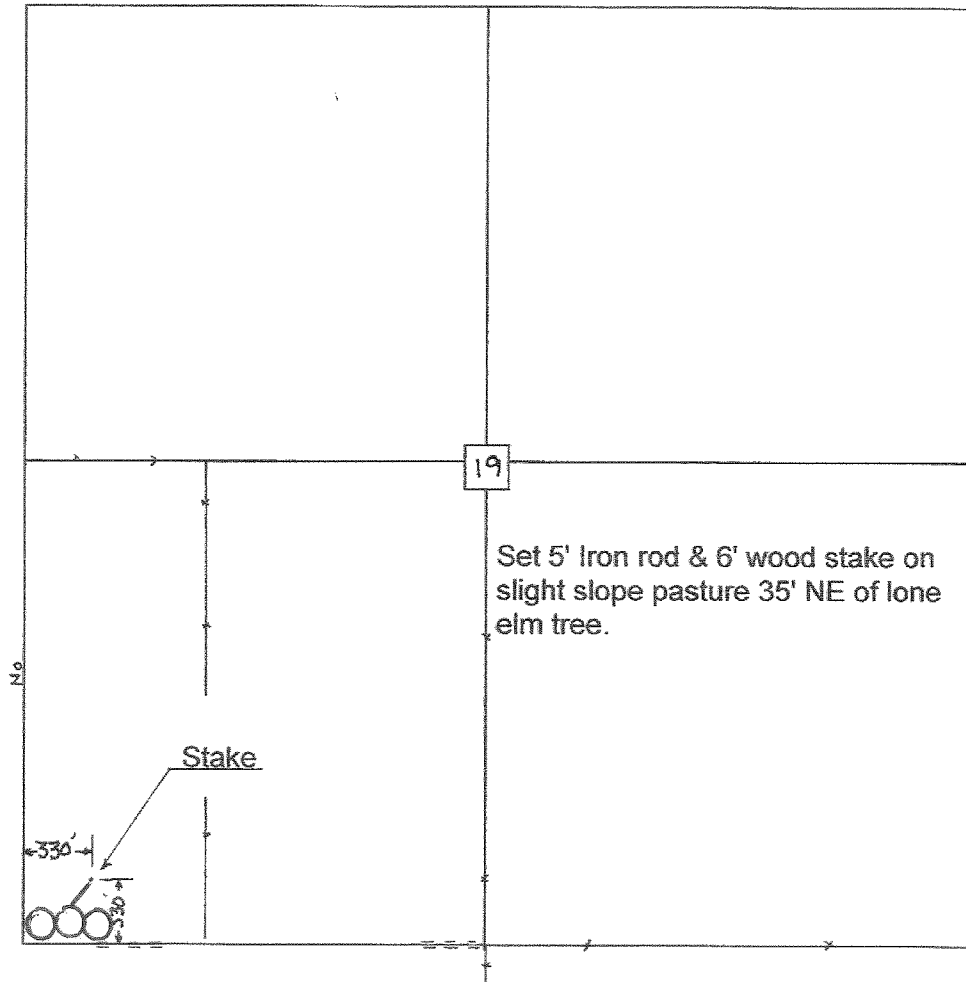
Location

Murfin Drilling
250 N. Water
Suite 300
Wichita, KS. 67202

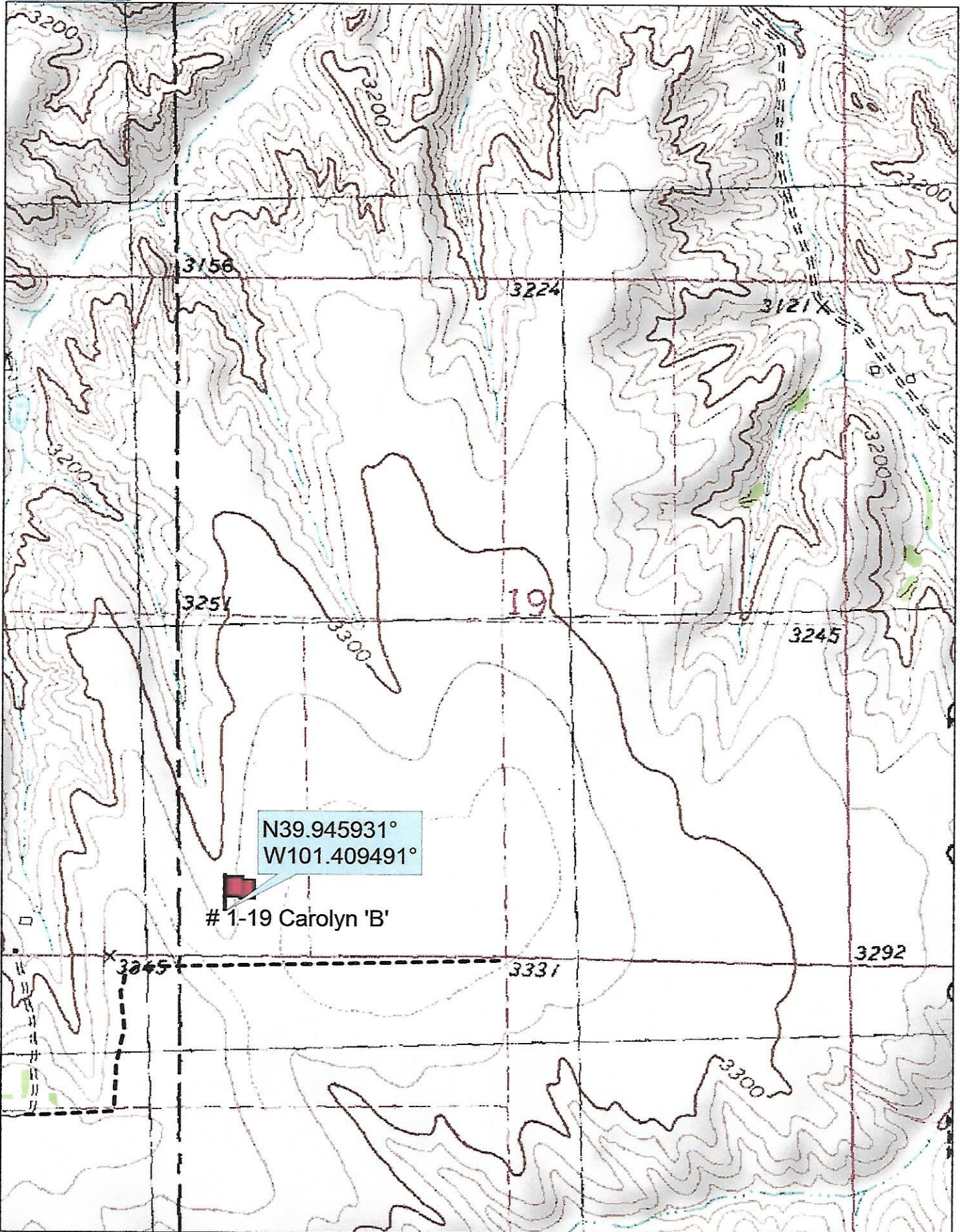
Elevation 3316 Gr.

Ordered By: Shauna

Scale 1"=1000'



Set 5' Iron rod & 6' wood stake on slight slope pasture 35' NE of lone elm tree.



Data use subject to license.

© DeLorme. Topo North America™ 9.

www.delorme.com

