

VESS OIL CORPORATION  
SCULLY LEASE  
SE. 1/4, SECTION 9, T28S, R4E  
BUTLER COUNTY, KANSAS

NO ROAD (130TH)

Notes:

1. Set (3) wood stakes at location site.
2. All flogging Red & Yellow.
3. Overhead power available at E. line, Sec. 9.
4. Kansas One Call System Inc. should be notified before excavation (1-800-344-7233).
5. CAUTION: Various pipelines in Sec. 9.
6. Contact landowner for best access and as to location of wood stakes in planted ground.
7. Set (2) alternate locations per representative. One to be 200' from center-line railroad and one to be 200' from the west right-of way line of railroad.

\*Drill site Location  
Scully "A" #25

1380'FSL 1950'FEL

Ground Elevation = 1212

Y = 352474 X = 2435458  
State Plane-NAD 27-Kansas South  
Latitude 37.625169 Longitude -96.996897  
NGS 84-NAD 83  
(75' West of Loc.)

\*Alternate Location

1380'FSL 1975'FEL

Ground Elevation = 1212

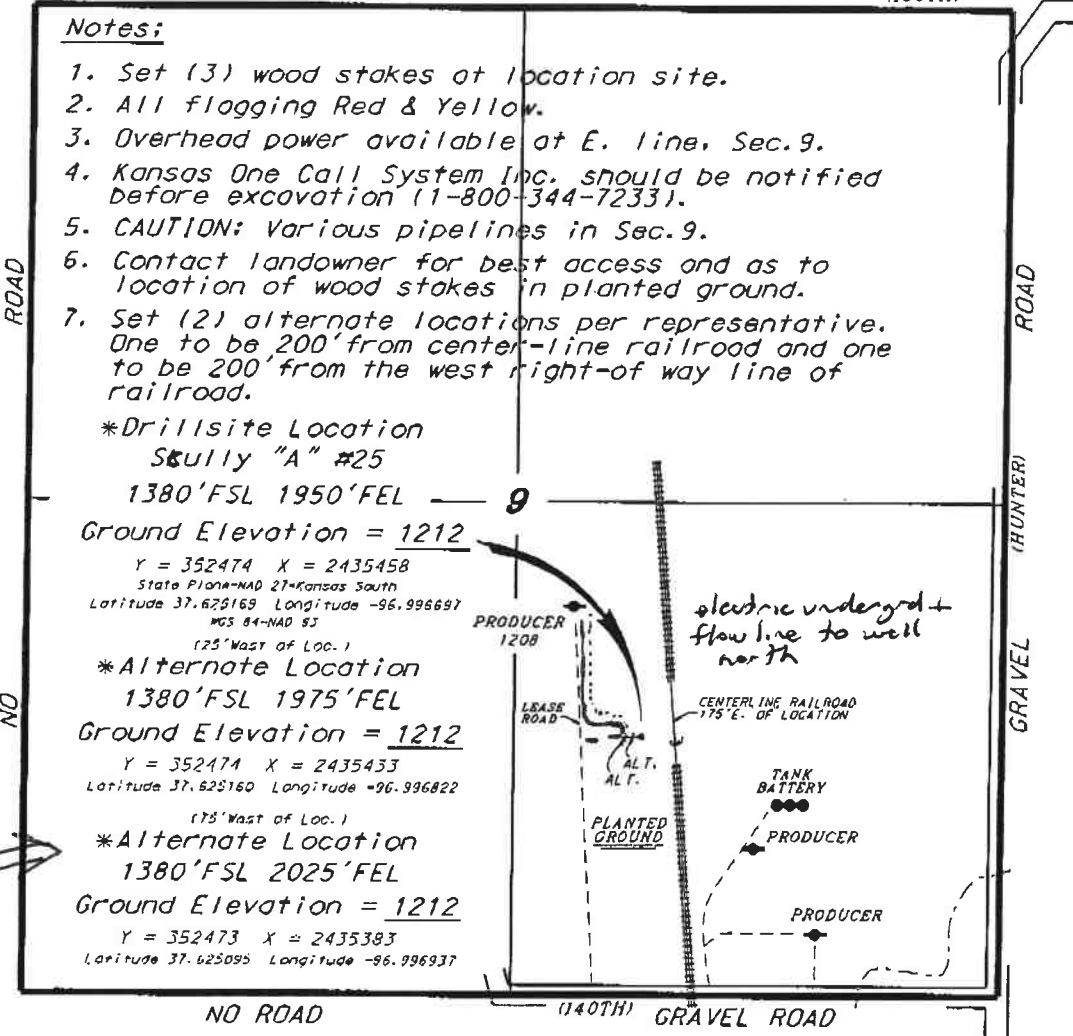
Y = 352474 X = 2435433  
Latitude 37.625160 Longitude -96.996822  
(75' West of Loc.)

\*Alternate Location

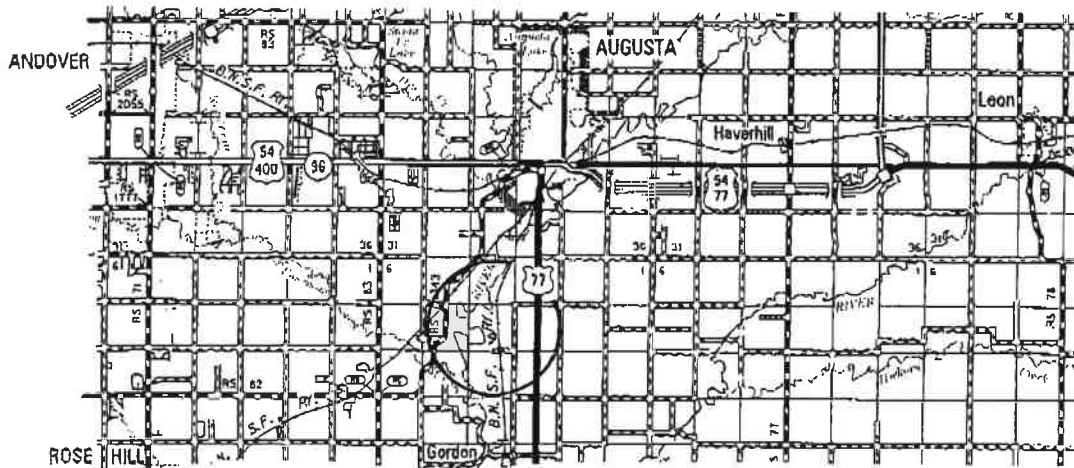
1380'FSL 2025'FEL

Ground Elevation = 1212

Y = 352473 X = 2435383  
Latitude 37.625095 Longitude -96.996937



\*Ingress and egress to location as shown on this plat is for access only and may not be legally opened for public use. Contact landowner, tenant and county road department for access.



\* Controlling data is based upon the best maps and photographs available to us and upon a regular section of land containing 640 acres.

\* Approximate section lines were determined using the normal standard of care of oilfield surveyors practicing in the state of Kansas. The section corners, which establish the precise section lines, were not necessarily located, and the exact location of the drill site location in the section is not guaranteed. Therefore, the operator securing this service and accepting this plat and all other parties relying thereon agree to hold Central Kansas Oilfield Services, Inc., its officers and employees harmless from all losses, costs and expenses and hold harmless released from any liability from incidental or consequential damages.

\* Elevations derived from National Geodetic Vertical Datum.

Date June 28, 2017

