



# Fall & Associates

Stake and Elevation Service

P.O. Box 222

Pretty Prairie, KS. 67570

785-243-7506

Date 6-1-17

Invoice Number 0531171

MURFIN DRILLING

1-19

Carolyn 'B'

Operator

Number

Farm Name

Rawlins-KS

19

1s

36w

330'FSL 405'FWL

~~330'FSL 330'FWL~~

County-State

S

T

R

Location

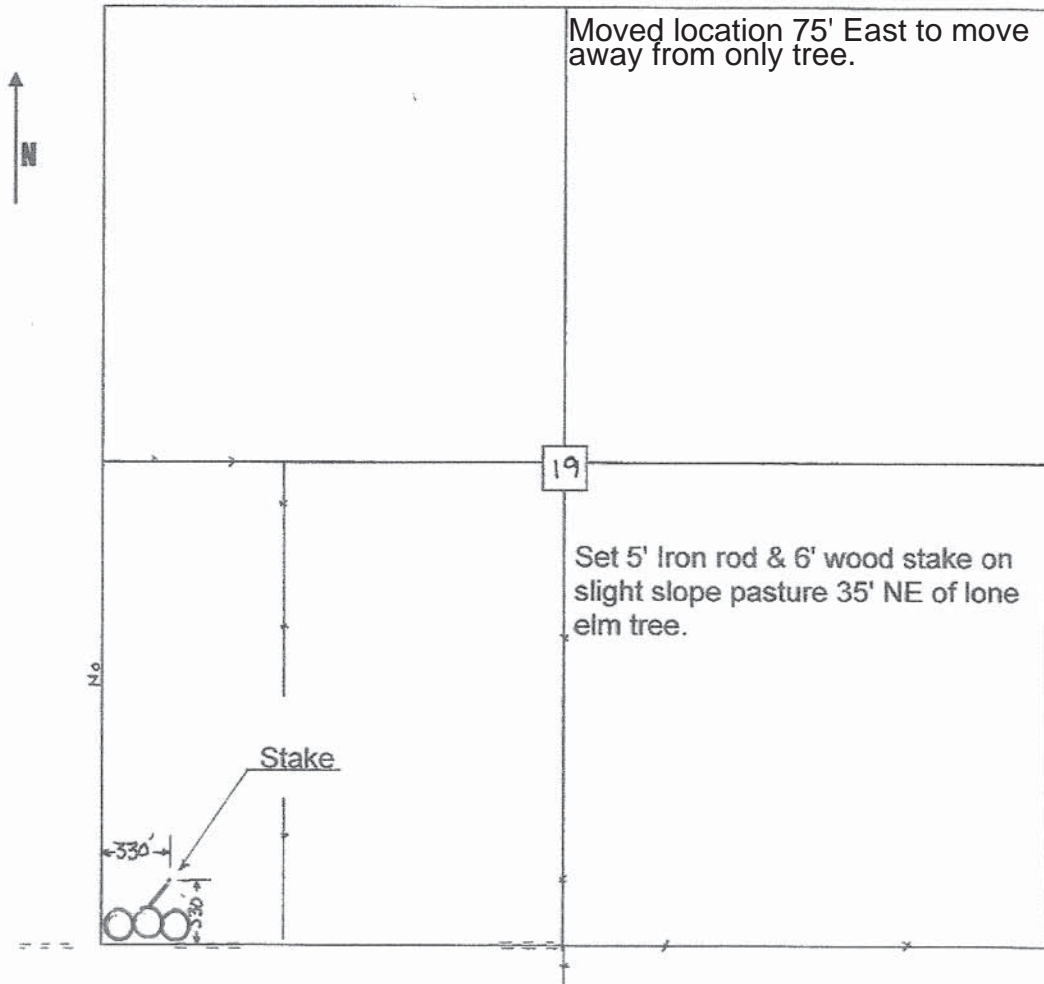
3321 Gr

Elevation ~~3318 Gr.~~

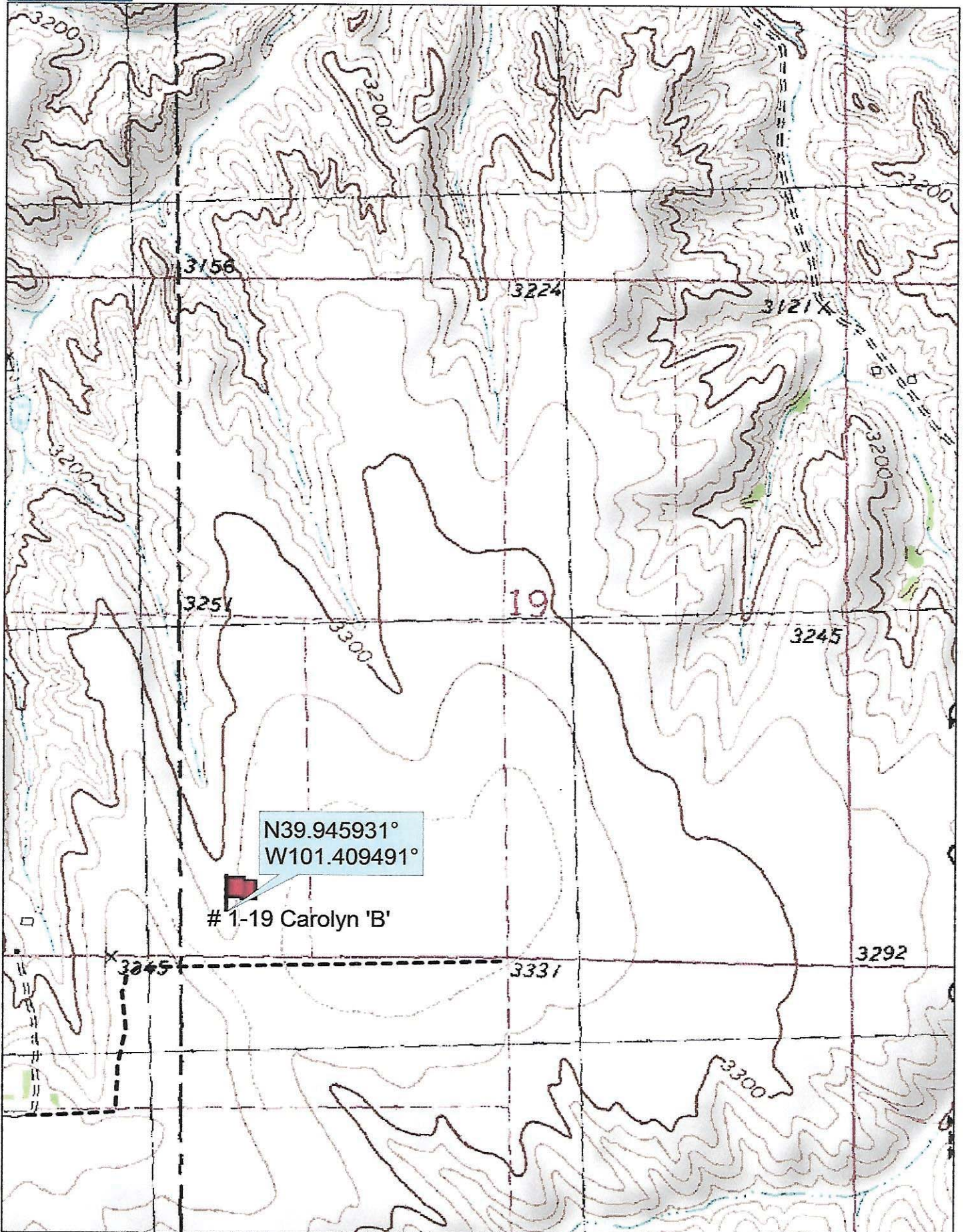
Ordered By: Shauna

Murfin Drilling  
250 N. Water  
Suite 300  
Wichita, KS. 67202

Scale 1"=1000'



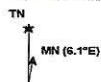




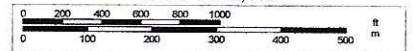
Data use subject to license.

© DeLorme. Topo North America™ 9.

www.delorme.com



Scale 1 : 12,000



1" = 1,000.0 ft

Data Zoom 13-1