



TRILOBITE TESTING, INC.

DRILL STEM TEST REPORT

Vincent Oil Corporation
 200 W Douglas Ave # 725
 Wichita, Ks 67202
 ATTN: Jim Hall

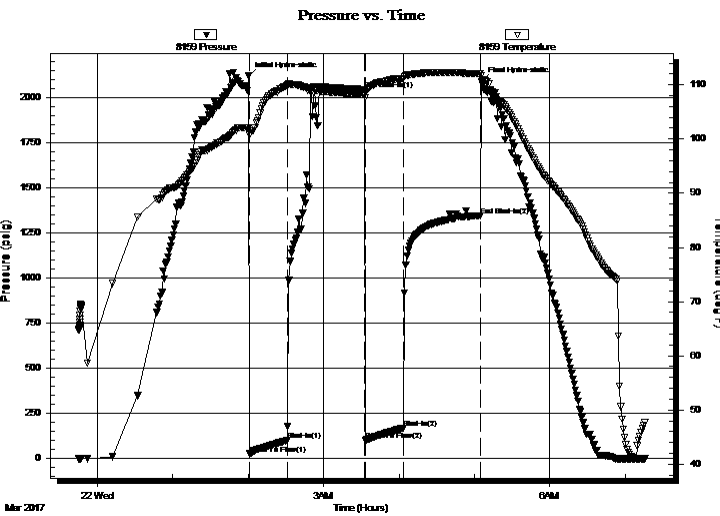
16-28S-21W Ford
Ringwald 1-16
 Job Ticket: 59929 **DST#: 1**
 Test Start: 2017.03.21 @ 23:45:07

GENERAL INFORMATION:

Formation: **Lansing "A"**
 Deviated: No Whipstock: ft (KB)
 Time Tool Opened: 02:00:52
 Time Test Ended: 07:15:22
 Interval: **4344.00 ft (KB) To 4367.00 ft (KB) (TVD)**
 Total Depth: 4398.00 ft (KB) (TVD)
 Hole Diameter: 7.88 inches Hole Condition: Good
 Test Type: Conventional Straddle (Initial)
 Tester: Leal Cason
 Unit No: 74
 Reference Elevations: 2379.00 ft (KB)
 2367.00 ft (CF)
 KB to GR/CF: 12.00 ft

Serial #: 8159 Inside
 Press@RunDepth: 168.09 psig @ 4345.00 ft (KB) Capacity: 8000.00 psig
 Start Date: 2017.03.21 End Date: 2017.03.22 Last Calib.: 2017.03.22
 Start Time: 23:45:08 End Time: 07:15:22 Time On Btm: 2017.03.22 @ 02:00:22
 Time Off Btm: 2017.03.22 @ 05:05:22

TEST COMMENT: IF: Fair Blow , Built to 9 1/2 inches
 IS: No Blow Back
 FF: Fair Blow , Built to 6 inches
 FS: No Blow Back



PRESSURE SUMMARY

Time (Min.)	Pressure (psig)	Temp (deg F)	Annotation
0	2119.61	102.06	Initial Hydro-static
1	25.69	100.70	Open To Flow (1)
31	100.71	109.87	Shut-In(1)
93	2046.19	108.18	End Shut-In(1)
93	100.89	107.59	Open To Flow (2)
123	168.09	111.16	Shut-In(2)
185	1346.55	112.10	End Shut-In(2)
185	2090.66	111.69	Final Hydro-static

Recovery

Length (ft)	Description	Volume (bbl)
124.00	Water	1.74
82.00	WCM 30%W 70%M	1.15

Gas Rates

Choke (inches)	Pressure (psig)	Gas Rate (Mcf/d)



TRILOBITE TESTING, INC.

DRILL STEM TEST REPORT

Vincent Oil Corporation
 200 W Douglas Ave # 725
 Wichita, Ks 67202
 ATTN: Jim Hall

16-28S-21W Ford
Ringwald 1-16
 Job Ticket: 59929 **DST#: 1**
 Test Start: 2017.03.21 @ 23:45:07

GENERAL INFORMATION:

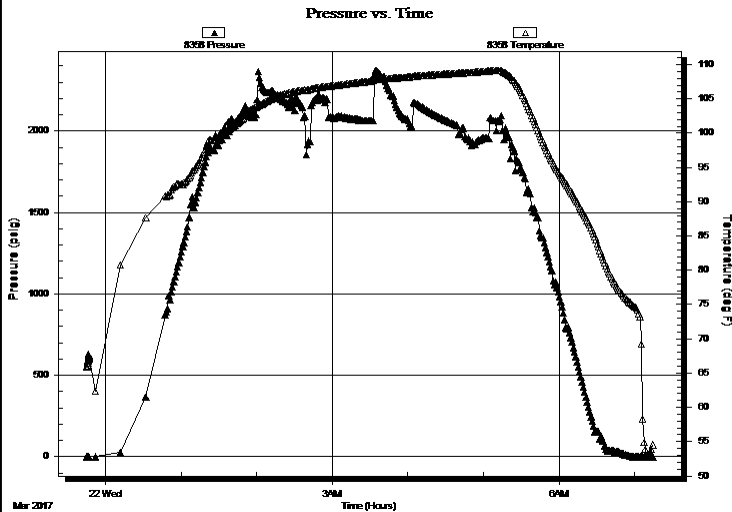
Formation: Lansing "A"	
Deviated: No Whipstock: ft (KB)	Test Type: Conventional Straddle (Initial)
Time Tool Opened: 02:00:52	Tester: Leal Cason
Time Test Ended: 07:15:22	Unit No: 74
Interval: 4344.00 ft (KB) To 4367.00 ft (KB) (TVD)	Reference Elevations: 2379.00 ft (KB)
Total Depth: 4398.00 ft (KB) (TVD)	2367.00 ft (CF)
Hole Diameter: 7.88 inches	KB to GR/CF: 12.00 ft
Hole Condition: Good	

Serial #: 8358

Below (Straddle)

Press@RunDepth: psig @ 4395.00 ft (KB)	Capacity: 8000.00 psig
Start Date: 2017.03.21 End Date: 2017.03.22	Last Calib.: 2017.03.22
Start Time: 23:45:08 End Time: 07:15:07	Time On Btm:
	Time Off Btm:

TEST COMMENT: IF: Fair Blow , Built to 9 1/2 inches
 IS: No Blow Back
 FF: Fair Blow , Built to 6 inches
 FS: No Blow Back



PRESSURE SUMMARY

Time (Min.)	Pressure (psig)	Temp (deg F)	Annotation

Recovery

Length (ft)	Description	Volume (bbl)
124.00	Water	1.74
82.00	WCM 30%W 70%M	1.15

Gas Rates

Choke (inches)	Pressure (psig)	Gas Rate (Mcf/d)



TRILOBITE
TESTING, INC.

DRILL STEM TEST REPORT

Vincent Oil Corporation
200 W Douglas Ave # 725
Wichita, Ks 67202
ATTN: Jim Hall

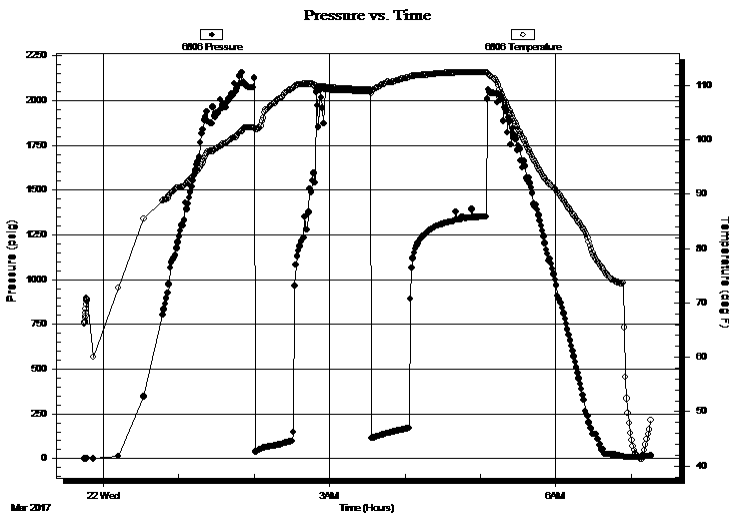
16-28S-21W Ford
Ringwald 1-16
Job Ticket: 59929 **DST#: 1**
Test Start: 2017.03.21 @ 23:45:07

GENERAL INFORMATION:

Formation: **Lansing "A"**
Deviated: No Whipstock: ft (KB)
Time Tool Opened: 02:00:52
Time Test Ended: 07:15:22
Interval: **4344.00 ft (KB) To 4367.00 ft (KB) (TVD)**
Total Depth: 4398.00 ft (KB) (TVD)
Hole Diameter: 7.88 inches Hole Condition: Good
Test Type: Conventional Straddle (Initial)
Tester: Leal Cason
Unit No: 74
Reference Elevations: 2379.00 ft (KB)
2367.00 ft (CF)
KB to GR/CF: 12.00 ft

Serial #: 6806 Outside
Press@RunDepth: psig @ 4345.00 ft (KB) Capacity: 8000.00 psig
Start Date: 2017.03.21 End Date: 2017.03.22 Last Calib.: 2017.03.22
Start Time: 23:45:08 End Time: 07:15:22 Time On Btm:
Time Off Btm:

TEST COMMENT: IF: Fair Blow , Built to 9 1/2 inches
IS: No Blow Back
FF: Fair Blow , Built to 6 inches
FS: No Blow Back



PRESSURE SUMMARY

Time (Min.)	Pressure (psig)	Temp (deg F)	Annotation

Recovery

Length (ft)	Description	Volume (bbl)
124.00	Water	1.74
82.00	WCM 30%W 70%M	1.15

Gas Rates

	Choke (inches)	Pressure (psig)	Gas Rate (Mcf/d)



**TRILOBITE
TESTING, INC.**

DRILL STEM TEST REPORT

FLUID SUMMARY

Vincent Oil Corporation
200 W Douglas Ave # 725
Wichita, Ks 67202
ATTN: Jim Hall

16-28S-21W Ford
Ringwald 1-16
Job Ticket: 59929 **DST#: 1**
Test Start: 2017.03.21 @ 23:45:07

Mud and Cushion Information

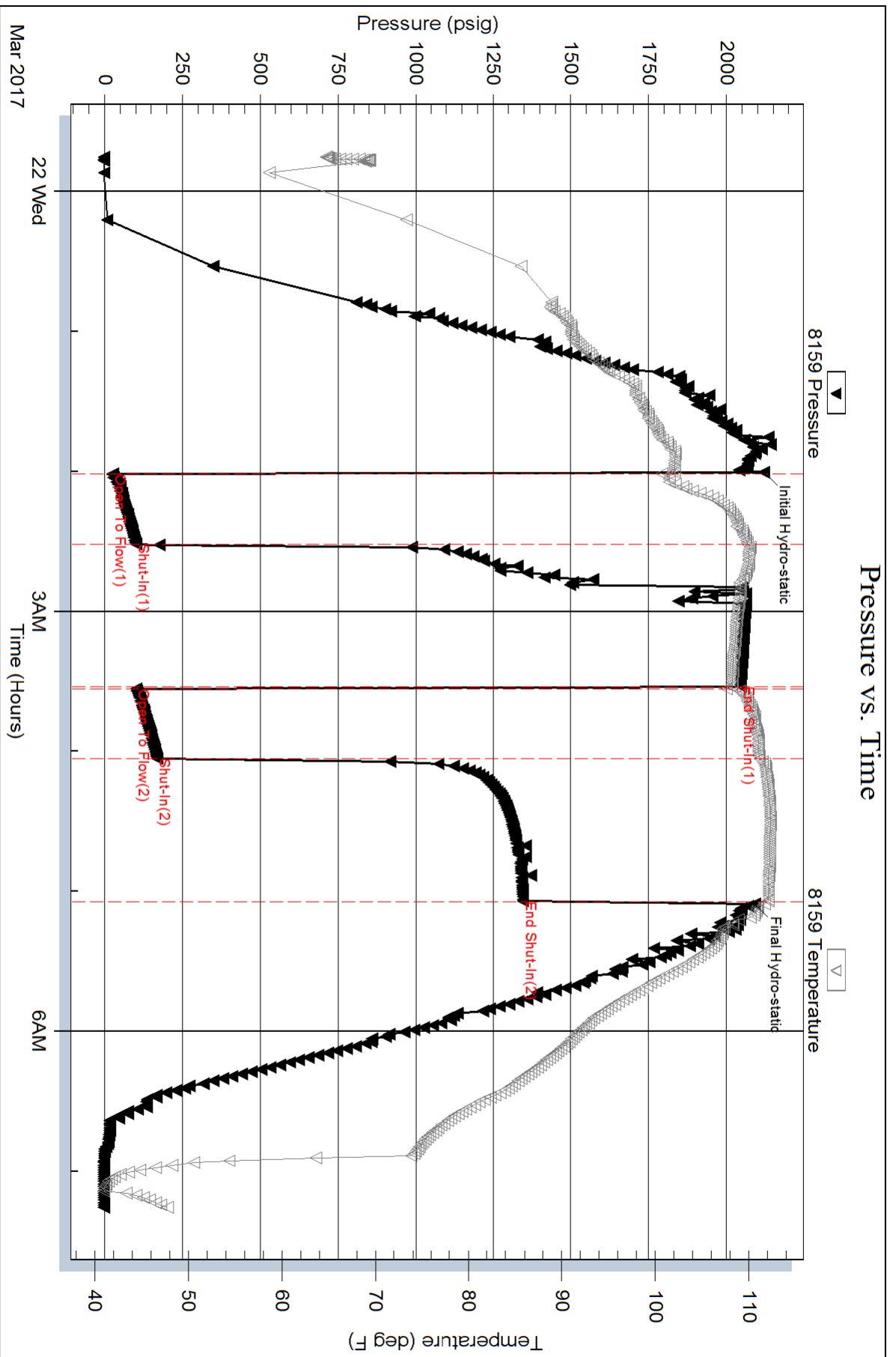
Mud Type: Gel Chem	Cushion Type:	Oil API:	deg API
Mud Weight: 9.00 lb/gal	Cushion Length: ft	Water Salinity:	67000 ppm
Viscosity: 51.00 sec/qt	Cushion Volume: bbl		
Water Loss: 7.60 in ³	Gas Cushion Type:		
Resistivity: ohm.m	Gas Cushion Pressure: psig		
Salinity: 6500.00 ppm			
Filter Cake: 0.02 inches			

Recovery Information

Recovery Table

Length ft	Description	Volume bbl
124.00	Water	1.739
82.00	WCM 30%W 70%M	1.150

Total Length: 206.00 ft Total Volume: 2.889 bbl
 Num Fluid Samples: 0 Num Gas Bombs: 0 Serial #:
 Laboratory Name: Laboratory Location:
 Recovery Comments: RW w as .18 @ 44 degrees

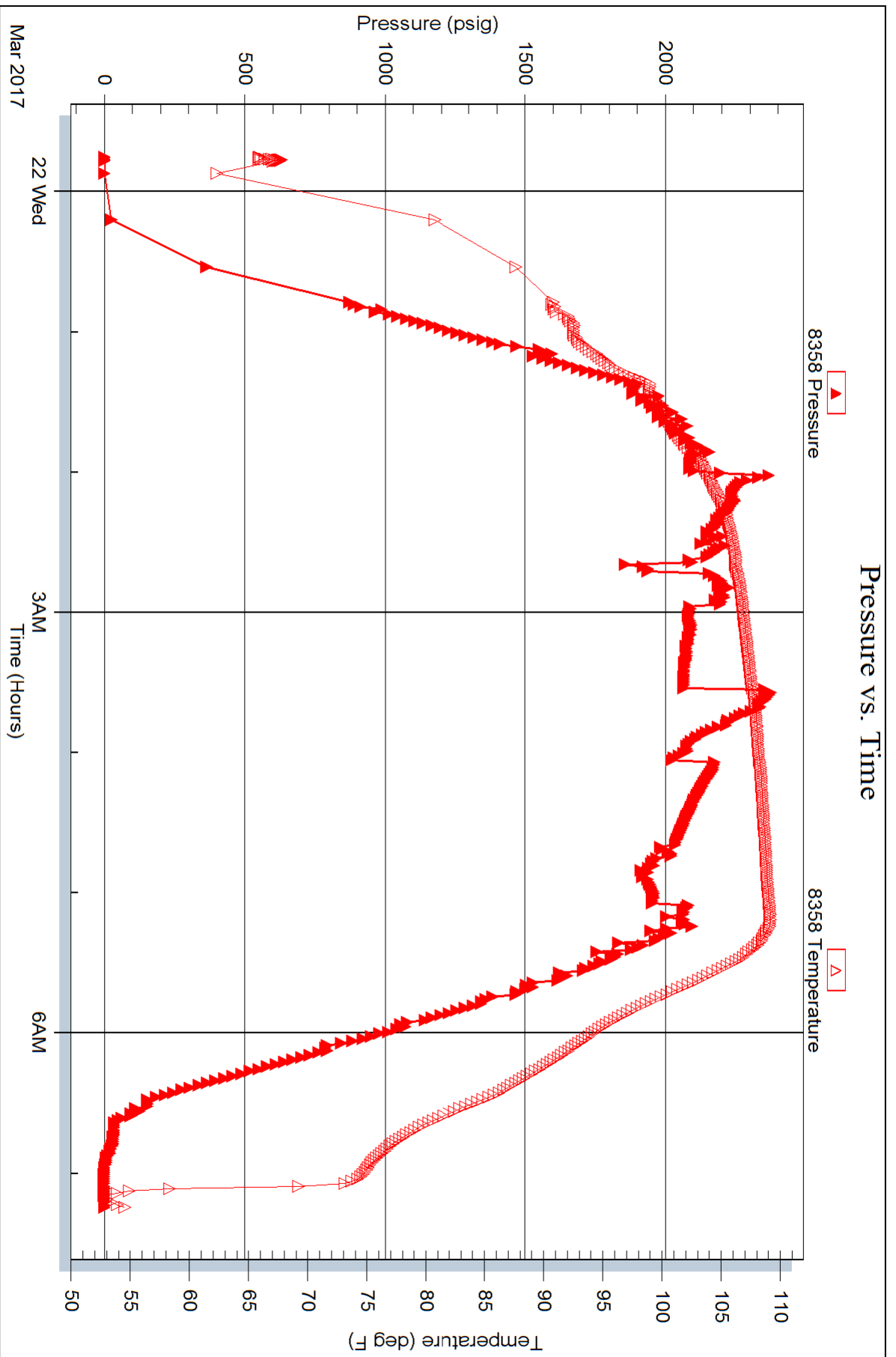


Serial #: 8358

Below (Stradent) Oil Corporation

Ringw ald 1-16

DST Test Number: 1



Serial #: 6806

Outside Vincent Oil Corporation

Ringw ald 1-16

DST Test Number: 1

