

LITHOLOGY STRIP LOG

WellSight Systems

Scale 1:240 (5"=100') Imperial
Measured Depth Log

Well Name: VINCENT OIL CORP. RINGWALD #1-16 NW SW SE NE

API: 15-057-20979-00-00

Location: SEC. 16, T28S, R21W, FORD CO. KANSAS

License Number: 5004

Region: WILDCAT

Spud Date: MARCH 16, 2017

Drilling Completed: MARCH 24, 2017

Surface Coordinates: 2,029' FNL, 1,001' FEL

Bottom Hole

Coordinates:

Ground Elevation (ft): 2,367'

K.B. Elevation (ft): 2,379'

Logged Interval (ft): 4,050' To: 5,146'

Total Depth (ft): 5,146'

Formation: RTD IN MISSISSIPPI

Type of Drilling Fluid: NATIVE MUD TO 3,793'. CHEMICAL GEL TO RTD

Printed by MUD.LOG from WellSight Systems 1-800-447-1534 www.WellSight.com

OPERATOR

Company: VINCENT OIL CORP.

Address: 200 W. DOUGLAS AVE #725

WICHITA, KANSAS 67202-3013

OFFICE; 316-262-3573

GEOLOGIST

Name: Jame R. Hall (Well Site Supervision)

Company: Black Gold Petroleum

Address: 5530 N. Sedgwick

Wichita, Kansas 67204-1828

316-838-2574, 316-217-1223

Comments

Drilling contractor: Duke Drilling, Rig #1, Tool Pusher; Mike Godfrey.

Surface Casing: 8 5/8" 23# set at 639' w/275sx, cement, did not circulate. Ran 1" tubing down annulas to finish cementing surface casing.

Daily Activity:

3/16/17; Spud @18:30hrs.

3/17/17; Drilled 12 1/4" hole to 640'. Set 8 5/8" surface casing @ 639'. Cement did not circulate to surface. Ran 1" tubing down annulas to finish cementing surface csg.

3/18/17; 1,302' drilling.

3/19/17; 2,550' drilling.

3/20/17; 3,360' drilling.

3/21/17; 4,204' drilling. @ 4,398' commenced DST #1, Had to short trip due to tight hole, then back to bottom and condition.

3/22/17; 4,398' finishing DST #1.

3/23/17; 4,769' drilling. Circulate Pawnee then short trip @4,886' 20 stands.

3/24/17; 5,014' circulating. Reached RTD 5,146'. Conditioned hole and trip out to run open hole logs.

3/25/17; Finished open hole logs. Vincent gave orders to P&A. Gave orders to the driller to P&A.

Deviation Surveys: 0.5 deg. @ 640', 1 deg. @ 4,398', 0.5 deg. @ 5,146'.

Bit Record:

#1 12 1/4" out @ 640'.

#2 7 7/8" JZ HA20 in @ 640' out @ 5,146', made 4,506' in 122.5 hrs.

Drilling time commenced: @ 4,050'. Maximum 10' wet and dry samples commenced: @ 4,050' to RTD. Samples delivered to Kansas Geological Sample Library at Wichita, Kansas.

Gas Detector: Blue Stem unit #5259. Digital Unit, commenced @ 4,050'.

Mud System: Mud-Co/Service Mud. Chemical Gel system @ 3,793', Mud Engineer: Justen Whitin (Dodge City Office).

**Open Hole Logs: ELI Logging, Hays Kansas,
DIL, CDL/CNL/PE (LTD to 4,000'), MEL/SON (LTD to Base Surface Csg.)**

Sample tops are placed on this Plotted Geo. Report, with the reference wells "A" Argent Energy Davis Trust #2 NE NE SW Sec 16 T28S R2W, and "B" Imperial Oil & Gas Davis Trust #1-16, SE SE SW Sec 16 T28S R21W. E-log tops datum differences shown.

This Plotted Geo. Report should be shifted approximately 4' to 6' deeper for correlation purposes with the open hole E-logs. Open hole LTD was 6' lower than RTD.

Serial #: 8159

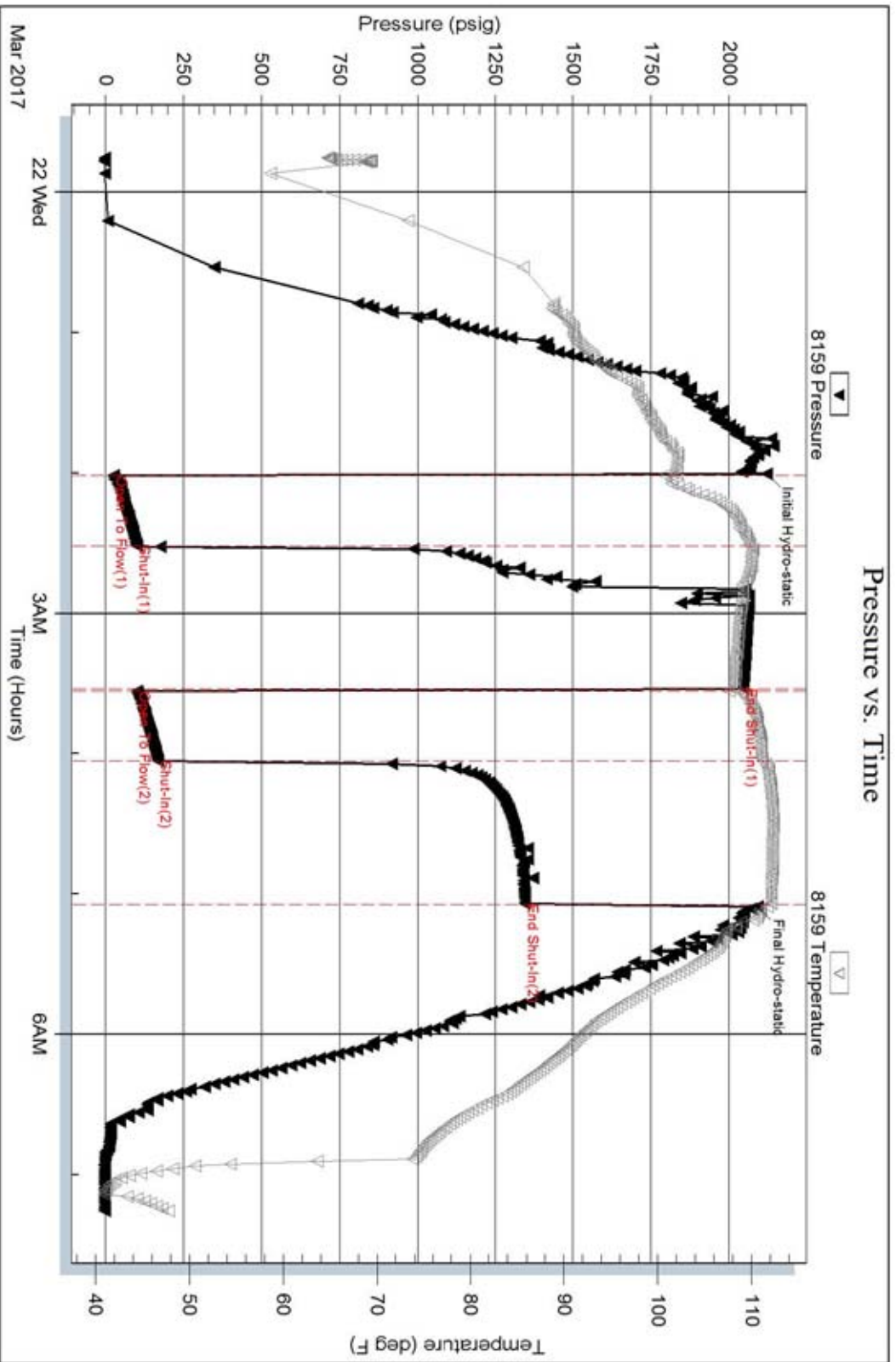
Inside

Vincent Oil Corporation

Ringw add 1-16

DST Test Number: 1

Pressure vs. Time



Triobite Testing, Inc

Ref. No: 59929

Printed: 2017.03.22 @ 08:16:16

DSTs

DST #1 Lansing "A", Straddle Test 4,344' - 4,367' (23'), (31') Tail Pipe. 30-60-30-60, IH 2119, IF 26-101 (fair blow building to 9"), ISI 2046 (tool slid approx. 4' to bottom during shut-in), FF 101-168 (fair blow building to 6"), FSI 1346 (no blow), FH 2091, Rec; 82' WCM, 124' salt water, Chl 67,000ppm (Rwa 0.18 @44 deg. BHT 112 deg. (Rwa 0.07 @ BHT, ELI .06 @ 75 0.04 @ BHT). Bottom Packer held through out the test.

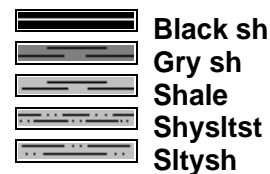
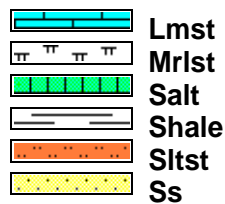
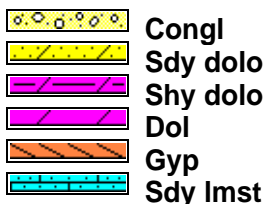
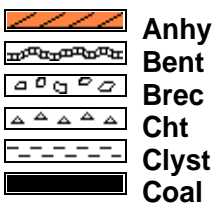
Qualifiers

CARBONATE CLASSIFICATION:

AFTER DUNHAM: **GRAIN;** any fossil, fossil fragment, sand grain, or other rock fragment within the rock. **MUDSTONE;** muddy carbonate rocks containing less than 10% grains. **WACKESTONE;** mud supported carbonate rocks with more than 10% grains. **PACKSTONE;** grain supported muddy carbonate rocks. **GRAINSTONE;** mud free carbonate rock, grain supported. **BOUNDSTONE;** carbonate rock bound together at deposition (coral, etc.). **CRYSTALLINE CARBONATE;** carbonate rock retaining to little of their depositional texture to be classified.

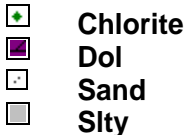
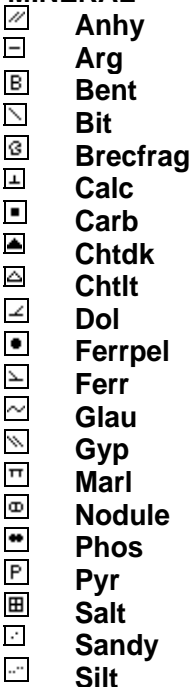
Qualifiers; (Fossils, Minerals, Shows, Porosity, etc.) Rare = less than 1% of sample total, Trace = less than 5% of sample total, Greater than 5% an estimate of total percentage.

ROCK TYPES

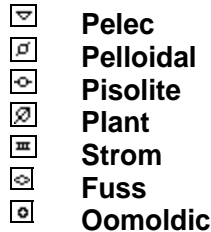
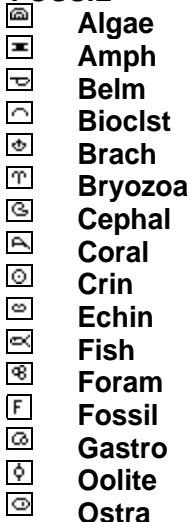


ACCESSORIES

MINERAL



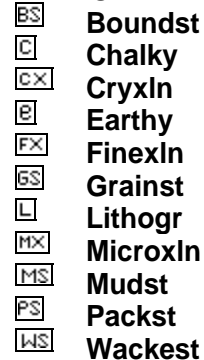
FOSSIL



STRINGER



TEXTURE



Curve Track 1

ROP (min/ft) ———
 Gamma (API) - - - -
 Caliper (API) ·····

TG, C1-C5

TG (units) ———
 C1 (units) - - - -
 C2 (units) - - - -
 C3 (units) ·····
 C4 (units) ·····
 C5 (units) ·····

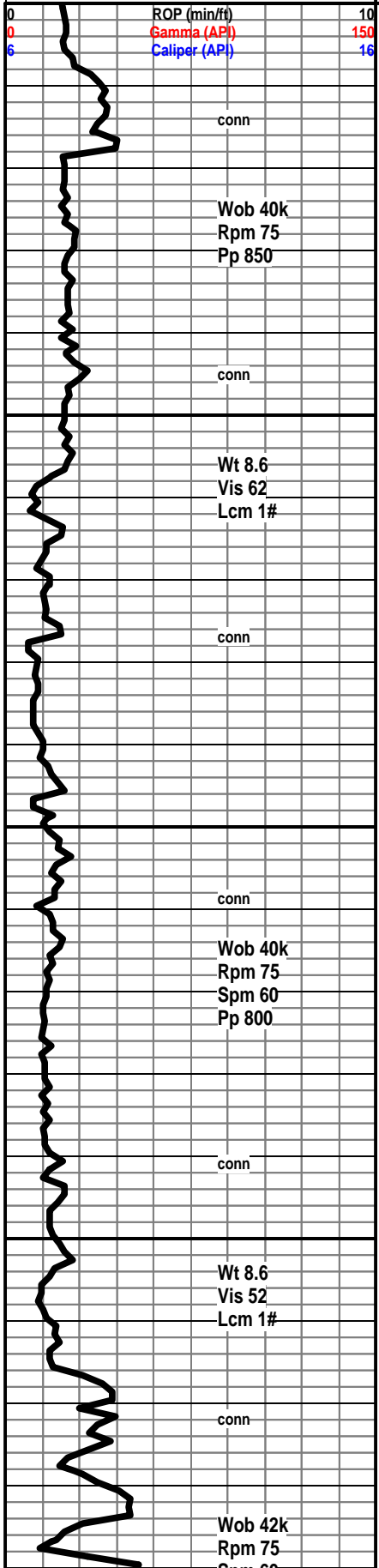
Depth

Porosity Type

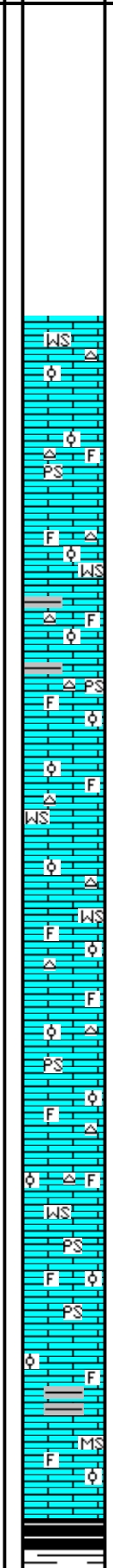
Lithology

Oil Shows

Geological Descriptions



40
4050
4100
4150



JIM HALL ON LOCATION 3/21/17.
 COMMENCED SAMPLES AND
 DRILLING TIME @4,050'.

Wackestone / Packstone; off wh, frm to britt, foss mic-ool, dull min fluor, no cut, NS, rare wrmy stn, no cut, pare pp por in dry, lt gry sharp free chert.

Wackestone / Packstone; off wh, buff, hrd-britt, foss, mic-ool, dull min fluor, rare wrmy stn, no show.

Wackestone / Packstone; buff, off wh, most britt, foss, mic-ool, rare drk wrmy stn, no show. Shale 15% 20% most gry, gry-grn, sm red, cave?

Wackestone / Packstone; buff, crm, most britt to hrd, foss, mic-ool, min flour only NS, rare free chert, sm foss, sharp. slight inc in Mudstone; off wh, chky-sft.

Wackestone / Packstone; off wh, buff to crm, britt to sft, foss, mic-ool, rare chert in mtrx, dull min fluor NS, rare free mott chert.

Sample AA; no real change here.

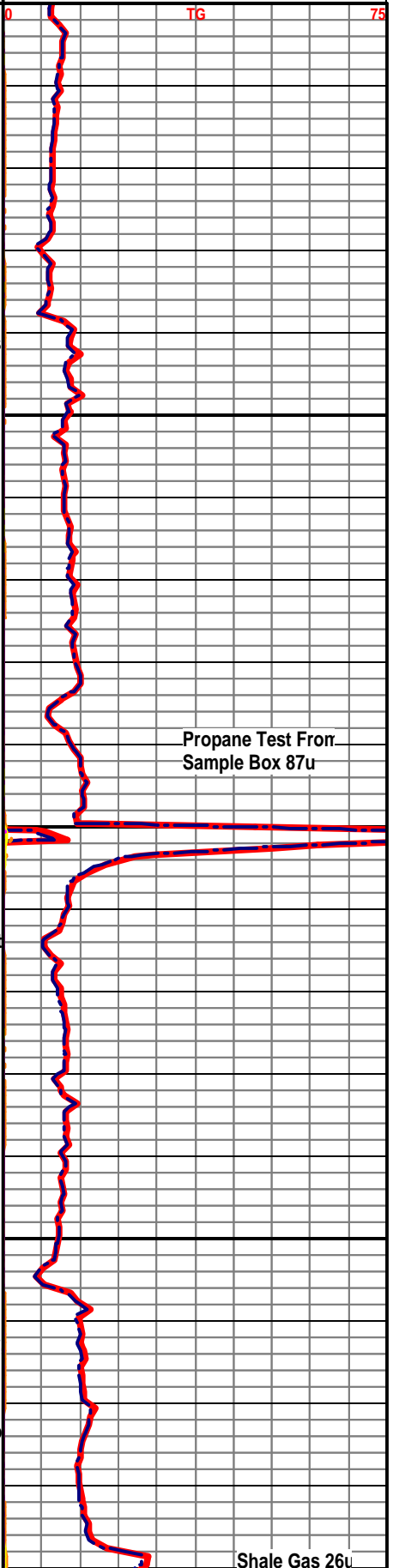
Wackestone/Packstone; crm, buff, off wh, hrd-sft, sm chky, min fluor only NS, rare off wh-gry chert, sm foss.

No real change here, sli inc in shale; gry, grn, gry rare blk lam with pyr.

Wackestone; crm, off wh, foss, mic ool, NS, sli inc in Mudstone; crm, buff, sm foss, most britt, to hard, sm w/chert

Heebner 4185 (-1806) A+12 B+1 C-1

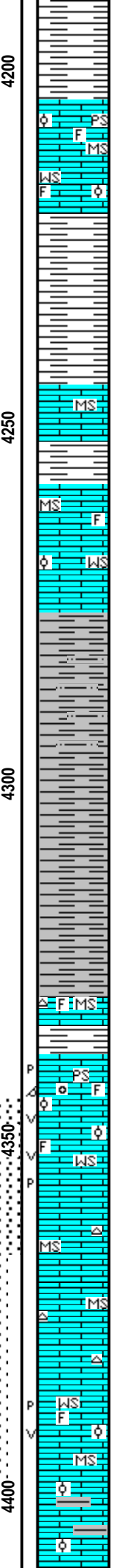
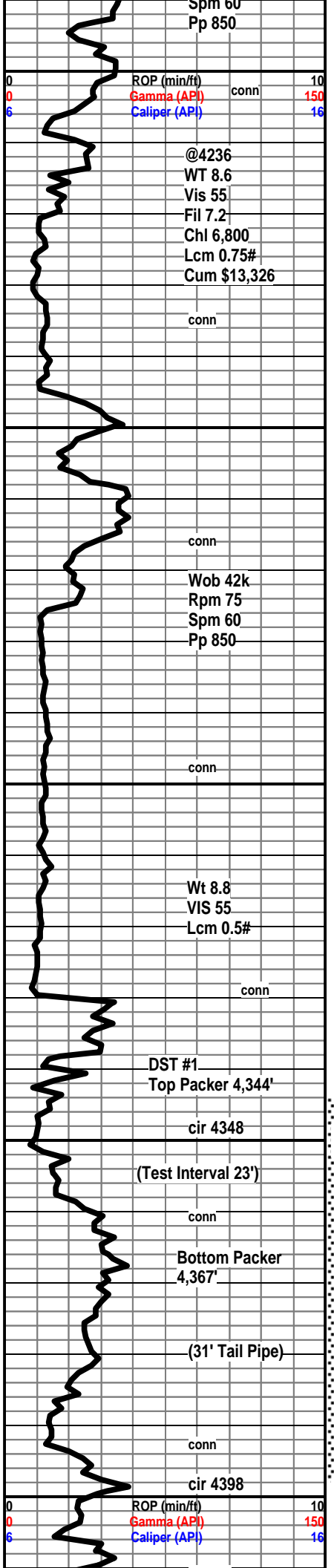
Shale; blk, sft to hrd-blky-gassy.



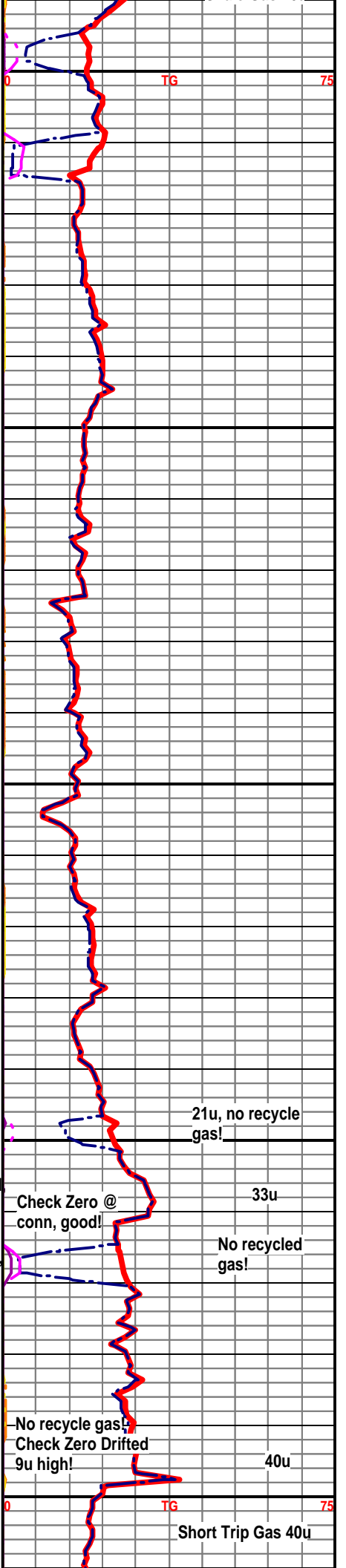
0
75

Propane Test Fron
 Sample Box 87u

Shale Gas 26u



Shale; gry, grn-wxy, red-rthy, poor sample representation.
 Toronto 4204 (-1825) A+11 B-2 C-3
 Wackestone to Packstone; crm, tan, foss, mic-ool hrd to britt, tt look in wet, min flour only no cut, no vis show wet. Mudstone; gry, hrd, blk-tab, dns look.
 Shale; gry, drk gry, sft to firm, sm earthy text, poor sample representation here.
 Mudstone; gry, crm, hard to sft, some chky, dense looking, NS.
 Shale; gry, drk gry, sft to firm.
 Mudstone; crm, off wh, sft to hrd, min flour only, NS. Wackestone in prt, crm, tan, hrd to sft, mic-ool to foss, tight looking, NS.
 Shale; 15% of sample, gry, drk gry, sft, sm silty, rare free chert-cave?
 Shale; 15% of sample, gry, drk gry, some blk, sft to firm, tab to platy, some silty.
 Shale; 20% gry, drk gry, gry-grn, sft, some laminated.
 Shale; 30% gry, gry-grn, sft, rthy texture, tab to platy, rare free chert-cave?
 Brown Lime 4330 (-1951) A+14 B+4 C+2
 Mudstone; tan, buff, hrd, rare foss frag, rare free chert
 Lansing 4338 (-1959) A+14 B+4 C+3
 Lansing Por. 4342 (-1963) A+13 B+5 C+5
 Packstone; buff, lt tan, vf-ool, fin-ool, occ oom, hard, no vis stn, no cut, no odor, no vis gas, vis pp, vgy, oom por. 80" sample 1 vf-ool, with chert inclusion, no vis stn, no vis oil, slow weak milky cut, no vis gas bubbles, poor por as above, no oil no stn.
 4350 4360; Wackestone / Packstone; crm, tan, micr-foss, micr-ool, no visible show or por in wet, barren pp, vgy por dry.
 Mudstone; crm, lit gry, hrd to chky, mxln to chky, dense, rare free lt and drk chert.
 Lans. "B" Por. 4387 (-2008) A+9 B+3 C even.
 Wackestone; crm, lt gry to buff, hrd to fri, micr-foss, micr-ool, no show, no cut on selected samples, scat pp, vgy por in dry, no vis stain or show looks barren.
 Mudstone / Wackestone; crm, tan, most hrd, sft-chky, sm mic-foss to mic-ool, tt look wet, NS. Shale 30-40% cave after test?



Wt 8.9
Vis 55
Lcm 1.5#

conn

@4398
Wt 8.9
Vis 53
Fil 8.4
Chl 7,700
Lcm 2#
Cum \$14,197

conn

Wob 42k
Rpm 75
Spm 60
Pp 900

conn

Wt 8.9
Vis 55
Lcm 2#

Wt 9.1
Vis 48
Lcm 2#

conn

conn

Wt 9.1
Vis 48
Lcm 2#

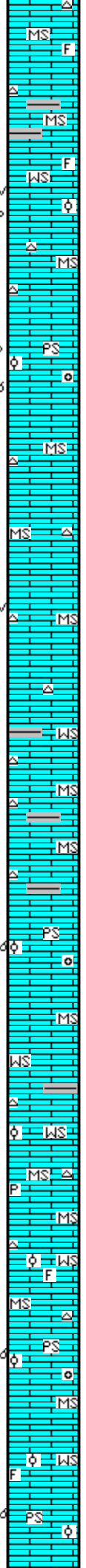
conn

ROP (min/ft) 10
Gamma (API) 150
Caliper (API) 16

conn

Wt 9.2
Vis 54
Lcm 2#

4450
4500
4550
4600



Mudstone / Wackestone; most aa, sm with large foss frag in mtrx, tt look wet, NS. Shale 10% aa. rare free blk, gry chert.

Mudstone / Wackestone; aa increase in drk gry to gry shales cave?

Wackestone; crm to tan, hrd-britt, micr-foss, micr-ool, rare vf xln, rare pp and vgy por in dry, no stn, no cut from sel samples.

Mudstone; crm, lt gry, hrd frm, most dense, off wh, sft-chky, no vis por or show wet, dull to silky luster, rare free lt gry chert.

Packstone; crm, tan, frm to hrd, silky text, oom to rare fine-ool, no cut, no odor, NS.

Mudstone; off wh, gry, silky to dull text, sm mxln, no show, no vis por, rare free wh specular chert.

Mudstone; aa, rare free wht ool chert, some tan blocky chert.

Mudstone; crm, off wh, gry, silky to dull text, some chky-sft, rare poor vgy por on Mudstone no stn, sm calc filled, rare free gry and wh chert.

Mudstone; aa, no real change here, rare free gry to brn chert.

Wackestone; sl inc off wh, micr-ool, tt lookng mtrx no stn or por in dry, trace tan oom
Packstone, silky text, no show, could be cave?

Mudstone; crm to gry, dense-hrd, silky to chky texture. Shale; sli increase in gry.

Packstone; crm, buff, tan, micr-ool, Fv-ool, oom por, no stn, no odor, no cut on selected samples.

Mudstone; crm to gry, firm to hrd, dense look in wet, Wackestone; in prt, wh micr-ool, tt look, no show.

Mudstone; crm, gry, aa, rare vgy por-no stn or show. Shale; sli increase, gry, drk gry, sm gry-grn, rare free wh ool chert. Wackestone; wh, micr-ool, to Vf-ool, tight looking, NS.

Mudstone; crm, brn-silky luster, hrd-dense, rare bone wh free chert.

Wackestone; crm, brn, micr-ool, micr-foss, NS.

Mudstone; crm, lt brn to gry-silky-dense, sm chky rare bone wh chert.

Packstone; crm, lt tan, vf-ool to oom, silky luster, no cut, no stain NS.

Wackestone; crm, tan, mic-foss to mic-ool, chky to silky mtrx, no show in wet or dry.

Packstone / Wackestone; crm, tan sm off wh, chky to silky mtrx, mic-ool to fine-ool, oom in prt, NS.

zero drifting upward!

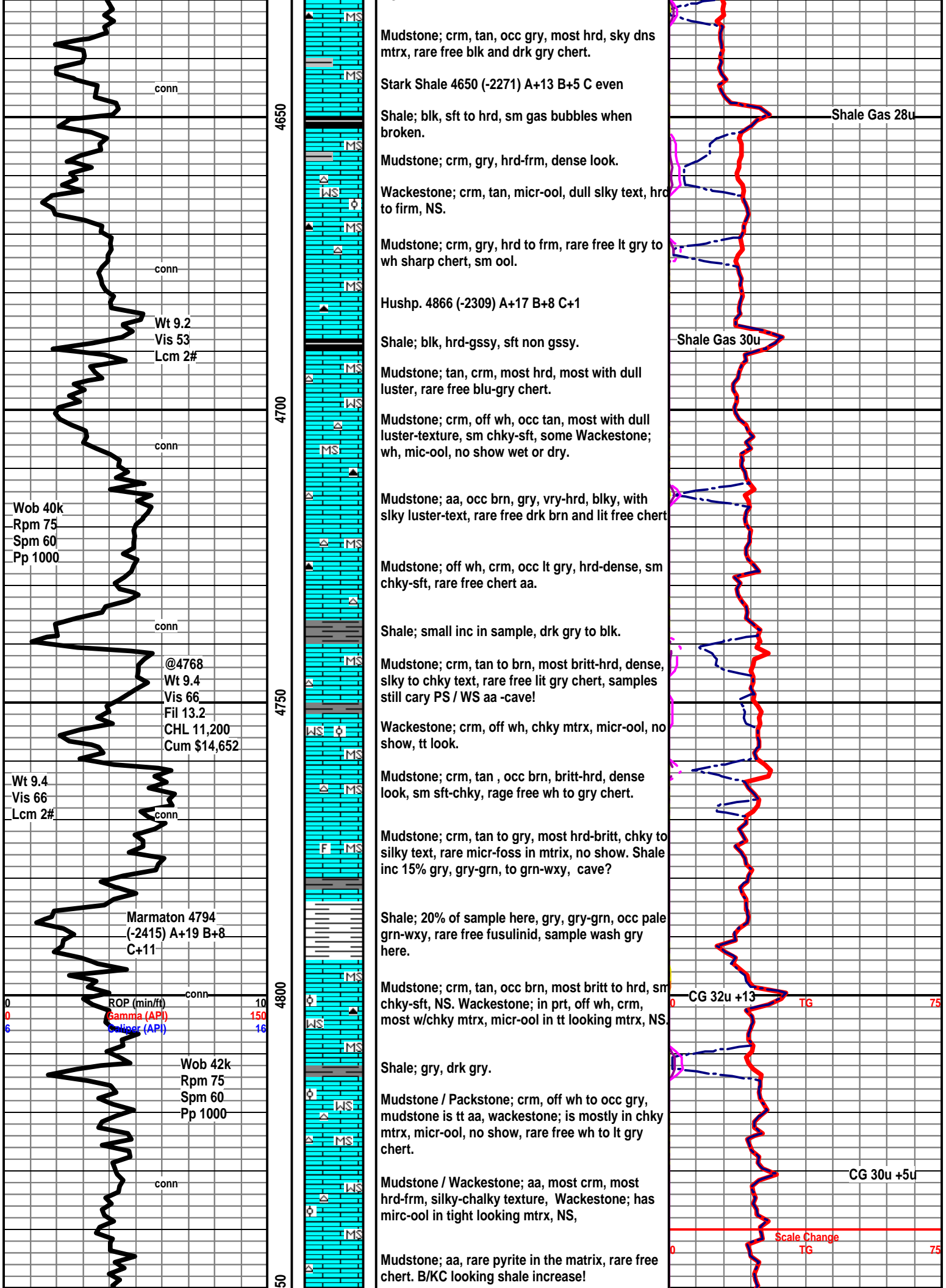
zero @ 22u

32u +10u

re-zero unit @ 4454 conn!

Test from sample box 166u

TG 75



conn

4650

Mudstone; crm, tan, occ gry, most hrd, sky dns mtrx, rare free blk and drk gry chert.

Stark Shale 4650 (-2271) A+13 B+5 C even

Shale; blk, sft to hrd, sm gas bubbles when broken.

Shale Gas 28u

Mudstone; crm, gry, hrd-frm, dense look.

Wackestone; crm, tan, micr-ool, dull silky text, hrd to firm, NS.

Mudstone; crm, gry, hrd to frm, rare free lt gry to wh sharp chert, sm ool.

conn

Hushp. 4866 (-2309) A+17 B+8 C+1

Shale; blk, hrd-gssy, sft non gssy.

Shale Gas 30u

Wt 9.2
Vis 53
Lcm 2#

Mudstone; tan, crm, most hrd, most with dull luster, rare free blu-gry chert.

Mudstone; crm, off wh, occ tan, most with dull luster-texture, sm chky-sft, some Wackestone; wh, mic-ool, no show wet or dry.

conn

Wob 40k
Rpm 75
Spm 60
Pp 1000

Mudstone; aa, occ brn, gry, vry-hrd, blk, with silky luster-text, rare free drk brn and lit free chert

Mudstone; off wh, crm, occ lt gry, hrd-dense, sm chky-sft, rare free chert aa.

conn

Shale; small inc in sample, drk gry to blk.

Mudstone; crm, tan to brn, most britt-hrd, dense, silky to chky text, rare free lit gry chert, samples still cary PS / WS aa -cave!

@4768
Wt 9.4
Vis 66
Fil 13.2
CHL 11,200
Cum \$14,652

Wackestone; crm, off wh, chky mtrx, micr-ool, no show, tt look.

Mudstone; crm, tan, occ brn, britt-hrd, dense look, sm sft-chky, rage free wh to gry chert.

Wt 9.4
Vis 66
Lcm 2#

Mudstone; crm, tan to gry, most hrd-britt, chky to silky text, rare micr-foss in mtrix, no show. Shale inc 15% gry, gry-grn, to grn-wxy, cave?

conn

Shale; 20% of sample here, gry, gry-grn, occ pale grn-wxy, rare free fusulinid, sample wash gry here.

Marmaton 4794
(-2415) A+19 B+8
C+11

Mudstone; crm, tan, occ brn, most britt to hrd, sm chky-sft, NS. Wackestone; in prt, off wh, crm, most w/chky mtrx, micr-ool in tt looking mtrx, NS.

CG 32u +13

ROP (min/ft)
Gamma (API)
Caliper (API)

4800

Shale; gry, drk gry.

Mudstone / Packstone; crm, off wh to occ gry, mudstone is tt aa, wackestone; is mostly in chky mtrx, micr-ool, no show, rare free wh to lt gry chert.

Wob 42k
Rpm 75
Spm 60
Pp 1000

CG 30u +5u

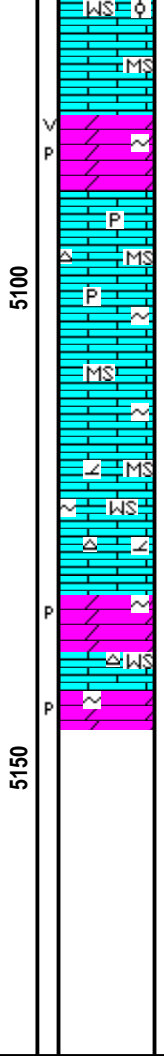
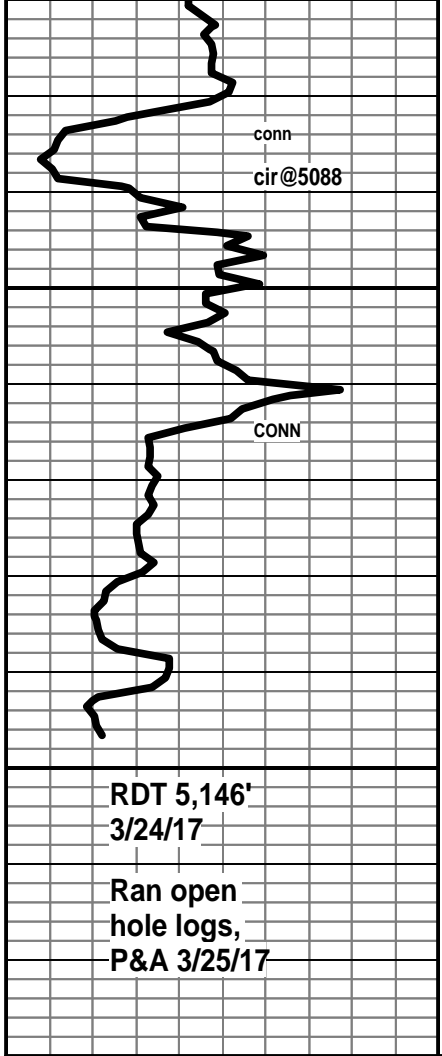
conn

Mudstone / Wackestone; aa, most crm, most hrd-frm, silky-chalky texture, Wackestone; has micr-ool in tight looking mtrx, NS,

Mudstone; aa, rare pyrite in the matrix, rare free chert. B/KC looking shale increase!

Scale Change
TG

50



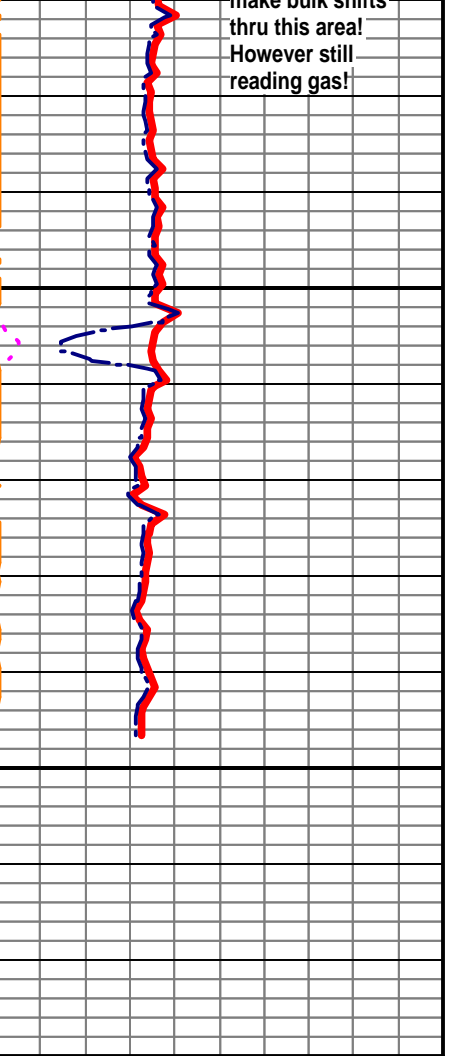
Mudstone / Wackestone; off wh, wh, crm, most chky mtrx, friable to sft, slky text is frm to hard, Wackestone in prt, most chky, no show.

Dolomite; rare samples of lt gry, very hrd, no visible stn, no cut, mineral fluor only, very fine gritty texture, no show on pp. small vgy por noted in dry, vry poor sample representation here.

Mudstone; crm, off wh, gry, most aa, sm with glauc in the mtrx, most have chky mtrx, rare free pyr, much very colored in the samples as above.

Mudstone; crm, gry, sm sft chky, sm silky hrd and dnse, sm gry and crm with glauc, no visible show sm crm Wackestone frm to sft, micr-foss, micr-ool, rare foss frag, much vc shale in sample.

Increase in crm to off wh Wackestone; mic-foss and mic-ool in tt looking matrix, sm with glauc, rare off wh chert with red patchy stn. still 20% shales in the sample, Increase in gry, buff, vry hrd dolo, rare vis por or show, rare glauc.



make bulk shims thru this area! However still reading gas!

RDT 5,146'
3/24/17

Ran open hole logs,
P&A 3/25/17