



TRILOBITE TESTING, INC.

DRILL STEM TEST REPORT

Shelby Resources LLC
 13949 W Colfax Ave
 BLDG 1 Suite 120
 Lakewood, CO 80401+3248
 ATTN: Jeremy Schwartz

26/18S/14W/Barton

Tindall Trust #1-26

Job Ticket: 64790

DST#: 3

Test Start: 2017.06.18 @ 17:39:00

GENERAL INFORMATION:

Formation: **Arbuckle**
 Deviated: No Whipstock: ft (KB)
 Time Tool Opened: 19:17:30
 Time Test Ended: 01:38:00
 Interval: **3410.00 ft (KB) To 3417.00 ft (KB) (TVD)**
 Total Depth: 3417.00 ft (KB) (TVD)
 Hole Diameter: 7.80 inches Hole Condition: Fair
 Test Type: Conventional Bottom Hole (Initial)
 Tester: Ken Swinney
 Unit No: 72 Great Bend/18
 Reference Elevations: 1906.00 ft (KB)
 1895.00 ft (CF)
 KB to GR/CF: 11.00 ft

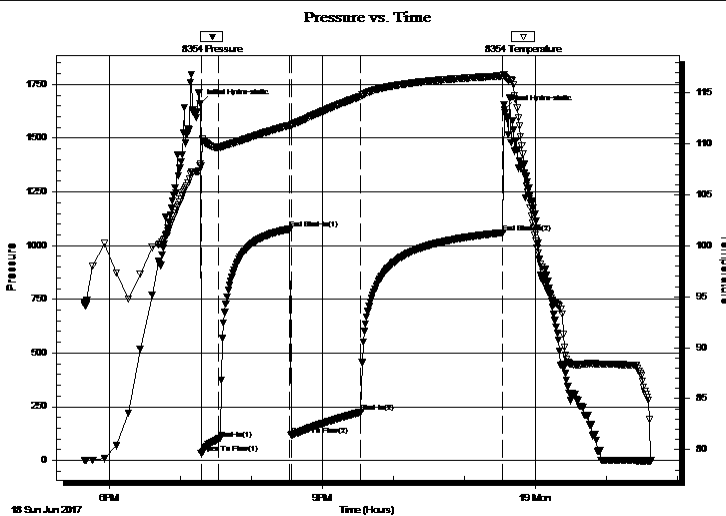
Serial #: 8354

Inside

Press@RunDepth: 225.21 psig @ 3413.00 ft (KB) Capacity: 8000.00 psig
 Start Date: 2017.06.18 End Date: 2017.06.19 Last Calib.: 2017.06.19
 Start Time: 17:39:05 End Time: 01:37:59 Time On Btm: 2017.06.18 @ 19:17:00
 Time Off Btm: 2017.06.18 @ 23:34:00

TEST COMMENT: I.F. 15 minutes/ Blow built to BOB in 6 1/2 minutes
 I.S.I. 60 minutes/ Blow back built to 4 1/2 inches
 F.F. 60 minutes/ Blow built to BOB in 8 minutes
 F.S.I. 120 minutes/ Blow back built to 4 inches

PRESSURE SUMMARY



Time (Min.)	Pressure (psig)	Temp (deg F)	Annotation
0	1660.94	108.04	Initial Hydro-static
1	32.65	107.83	Open To Flow (1)
15	98.99	109.63	Shut-In(1)
76	1076.62	111.82	End Shut-In(1)
77	116.63	111.69	Open To Flow (2)
136	225.21	114.67	Shut-In(2)
256	1059.94	116.67	End Shut-In(2)
257	1633.46	116.61	Final Hydro-static

Recovery

Length (ft)	Description	Volume (bbl)
126.00	Mud cut gassy oil	0.62
0.00	Mud 10% Gas 15% Oil 75%	0.00
472.00	Gassy Oil	5.80
0.00	Gas 20% Oil 80%	0.00
0.00	409 feet of gas in pipe	0.00

Gas Rates

	Choke (inches)	Pressure (psig)	Gas Rate (Mcf/d)



**TRILOBITE
TESTING, INC.**

DRILL STEM TEST REPORT

Shelby Resources LLC
13949 W Colfax Ave
BLDG 1 Suite 120
Lakewood, CO 80401+3248
ATTN: Jeremy Schwartz

26/18S/14W/Barton

Tindall Trust #1-26

Job Ticket: 64790

DST#: 3

Test Start: 2017.06.18 @ 17:39:00

GENERAL INFORMATION:

Formation: **Arbuckle**

Deviated: No Whipstock: ft (KB)

Time Tool Opened: 19:17:30

Time Test Ended: 01:38:00

Test Type: Conventional Bottom Hole (Initial)

Tester: Ken Swinney

Unit No: 72 Great Bend/18

Interval: 3410.00 ft (KB) To 3417.00 ft (KB) (TVD)

Reference Elevations: 1906.00 ft (KB)

Total Depth: 3417.00 ft (KB) (TVD)

1895.00 ft (CF)

Hole Diameter: 7.80 inches Hole Condition: Fair

KB to GR/CF: 11.00 ft

Serial #: 8960 Outside

Press@RunDepth: 1059.30 psig @ 3414.00 ft (KB)

Capacity: 8000.00 psig

Start Date: 2017.06.18

End Date:

2017.06.19

Last Calib.:

2017.06.19

Start Time: 17:39:05

End Time:

01:37:59

Time On Btm:

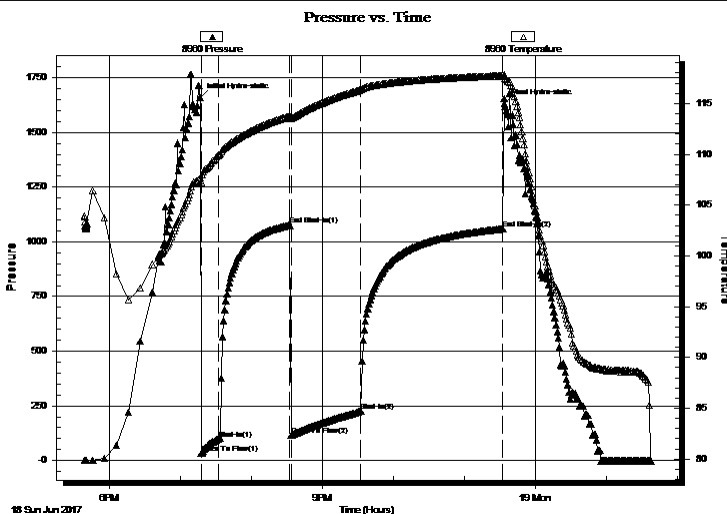
2017.06.18 @ 19:16:30

Time Off Btm:

2017.06.18 @ 23:34:00

TEST COMMENT: I.F. 15 minutes/ Blow built to BOB in 6 1/2 minutes
I.S.I. 60 minutes/ Blow back built to 4 1/2 inches
F.F. 60 minutes/ Blow built to BOB in 8 minutes
F.S.I. 120 minutes/ Blow back built to 4 inches

PRESSURE SUMMARY



Time (Min.)	Pressure (psig)	Temp (deg F)	Annotation
0	1660.04	107.65	Initial Hydro-static
1	31.57	107.24	Open To Flow (1)
16	98.89	109.90	Shut-In(1)
76	1075.97	113.77	End Shut-In(1)
77	115.55	113.56	Open To Flow (2)
136	225.24	116.34	Shut-In(2)
256	1059.30	117.73	End Shut-In(2)
258	1632.37	117.65	Final Hydro-static

Recovery

Length (ft)	Description	Volume (bbl)
126.00	Mud cut gassy oil	0.62
0.00	Mud 10% Gas 15% Oil 75%	0.00
472.00	Gassy Oil	5.80
0.00	Gas 20% Oil 80%	0.00
0.00	409 feet of gas in pipe	0.00

Gas Rates

	Choke (inches)	Pressure (psig)	Gas Rate (Mcf/d)



**TRILOBITE
TESTING, INC.**

DRILL STEM TEST REPORT

FLUID SUMMARY

Shelby Resources LLC

26/18S/14W/Barton

13949 W Colfax Ave
BLDG 1 Suite 120
Lakewood, CO 80401+3248
ATTN: Jeremy Schwartz

Tindall Trust #1-26

Job Ticket: 64790

DST#: 3

Test Start: 2017.06.18 @ 17:39:00

Mud and Cushion Information

Mud Type: Gel Chem

Cushion Type:

Oil API:

35 deg API

Mud Weight: 9.00 lb/gal

Cushion Length:

ft

Water Salinity:

ppm

Viscosity: 59.00 sec/qt

Cushion Volume:

bbbl

Water Loss: 8.79 in³

Gas Cushion Type:

Resistivity: ohm.m

Gas Cushion Pressure:

psig

Salinity: 3300.00 ppm

Filter Cake: 2.00 inches

Recovery Information

Recovery Table

Length ft	Description	Volume bbl
126.00	Mud cut gassy oil	0.620
0.00	Mud 10% Gas 15% Oil 75%	0.000
472.00	Gassy Oil	5.801
0.00	Gas 20% Oil 80%	0.000
0.00	409 feet of gas in pipe	0.000

Total Length: 598.00 ft

Total Volume: 6.421 bbl

Num Fluid Samples: 0

Num Gas Bombs: 0

Serial #:

Laboratory Name:

Laboratory Location:

Recovery Comments:

