

KIM B. SHOEMAKER

CONSULTING GEOLOGIST

316-884-3709 * WICHITA, KS

GEOLOGIST'S REPORT

DRILLING TIME AND SAMPLE LOG

COMPANY L. D. DRILLING, INC.

LEASE # 2-26 SCHREIBER

FIELD MINER

LOCATION 400' FSL & 2270' FWL

SEC 26 TWP 17s RGE 24w

COUNTY NESS STATE KANSAS

CONTRACTOR L. D. DRILLING, INC.

SPUD 6-17-17 COMP 6-27-17

RTD 4580 LTD 4584

MUD WT 3411 TYPE MUD CHEMICAL

ELEVATIONS

KB 2447

DF _____

CL 2442

Measurements Are A
From 2447 KB

CASING

SURFACE 8 5/8" @ 344'

PRODUCTION 5 1/2" @

ELECTRICAL SURVEYS

DUAL IND., DENS-N. MII 20

SAMPLES SAVED FROM 3700 TO 4580

DRILLING TIME KEPT FROM 3500 TO 4580

SAMPLES EXAMINED FROM 3700 TO 4580

GEOLOGICAL SUPERVISION FROM 3700 TO 4580

GEOLOGIST ON WELL KIM B. SHOEMAKER

FORMATION TOPS	LOG	SAMPLES
ANHYDRITE	1751+ 696	1748+ 699
B/ANH.	1784+ 663	1787+ 660
HEEBNER	3822- 1375	3822- 1375
LANSING	3863- 1416	3862- 1415
B/KC	4158- 1711	4154- 1707
PAWNEE	4278- 1831	4276- 1829
FORT SCOTT	4366- 1919	4363- 1916
CHEROKEE	4389- 1942	4390- 1943
MISSISSIPPI Dol.	4463- 2016	4462- 2015



REMARKS
6-16-17 Move Rig
6-17 @ 5PUP
6-18 @ 347'
6-19 @ 1620'
6-20 @ 2411'
6-21 @ 3012'
6-22 @ 3515'
6-23 @ 4090'
6-24 @ 4335'
6-25 @ 4400'
6-26 @ 4470'
6-27 @ 4580'

API: 15-135-25955

LEGEND

- Anhydrite
- Salt
- Scapolite
- Shale
- Sandstone
- Gyps. sh.
- Limestone
- Dolomite
- Chert
- Dolomite



REMARKS

SAMPLE DESCRIPTIONS

ANHYDRITE 1748+ 699

B/ANH. 1787+ 660

SH-101-13

1800

3500

3600

3700

VIS: 45
WT: 8.6
VL: 8.0
CHL: 2700

Samples are lagged

Δ by wt

ES. 11g. Foss w/ 10g Foss.

Sh. G.

ES. Tallg. Foss. Colitic

ES. w/ Foss. Vis. Chl.

ES. w/ Tallg. Foss. Sh. Chl.



LS. wt. Lig. foss. Sil. cherty

3800

LS. Th. Foss. Caliche

HEEBNER 3822-1375
Sh. Blue cherty

Sh. Lig.

LS. wt. Sil. Foss. Sil. A

LANSING 3862-1415
Sh. Lig.

LS. Th. wt. Sil. Foss. Sil. A

LS. wt. Rd. sh. ss. sil.

Sh. Lt. Blue ch.

3900

LS. wt. Sil. Foss. Sil. Ch. Lig.

Sh. Lig.

LS. wt. V. Sil. Foss. Sil. A

Sh. Lig.

LS. wt. Sil. cherty

Sh. Lig.

LS. wt. Lig. V. Sil. Foss. V. Sil. Caliche

LS. wt. ool. cherty

4000

LS. Th. Sil. A

LS. Th. Lig. V. Sil. Foss. Sil. A

LS. wt. Sil. Foss. Sil. A Caliche

Sh. Lig.

LS. wt. Sil. Foss. Sil. Cherty

Sh. Lig.

LS. Th. wt. ool. V. Sil. cherty + Caliche

4100

Sh. Blue ch.

LS. R. Sil. Foss. Caliche

LS. wt. Sil. Foss. V. Sil. cherty

VIS: 46
WT: 9.3
WL: 8.0
CAL: 4100

✓ LOG

PANNEE 4276
- 1829

VIS: 49
WT: 9.6
WL: 8.0
CAL: 3800

VIS: 61
WT: 9.45
WL: 8.0
CAL: 4200

LS. wt. Sil. Foss. VSI. chly.
LS. Ltg. VSI. Foa.
Sh. Gr.
LS. Ltg. VSI. Chly.

B/KC 4154-1707

Sh. Gy. Dk.
LS. wt. Rd. Shly.
Sh. Rd.
LS. Br. Lt. Br. VSI. Foa.
Sh. Rd.
LS. Ltg. Dm.
Sh. Rd.
LS. Tn. L. Sil. Foa.

LS. Yellow VSI-A

Sh. Rtg. Silty LS silty

LS. Ltg. VSI. Foa. Sil-A

Sh. Gy. Dk.

LS. Ltg. Dm.

LS. Tn. Ltg. VSI. Silty

LS. Ltg. Silty

LS. Dk. Gy. Silty.

LS. Dk. Silty

Sh. Dk. Silty

Sh. Blk. Carb.

FORT SCOT 4363-1916

LS. Tn. wt. Foss. Sil. Foss. Sil-A. Fr. long p
VSI. Bl. Spid. Sil. F. Sil. Fr. Floor. Col. color.

LS. wt. Silty. VSI. Foa. Sil-A

LS. Gy.ool. Sil-A. Fr. VSI. p. Lt. Bl. Spid. Sil. VSI. Fr.
Dk. Floor. Floor.

CHEROKEE 4390-1943

Sh. Blk. Carb.

LS. Gy. VSI. Foa.

LS. Tn. L. Sil-A. Chly.

Sh. Lt. Bl. Carb.

LS. Tn. Sil-A

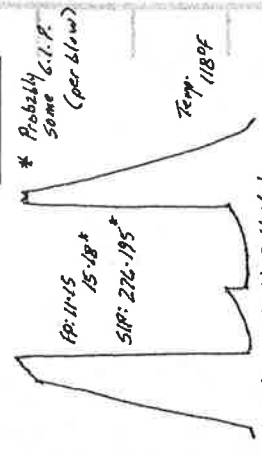
Sh. Ltg.

Δ Yellow Mt. LS. VSI. Sil-A

DST (1) 4350-4400

1ST OPEN: Blow built to 3"
2ND OPEN: " " 5 1/4"
30.45-45-60

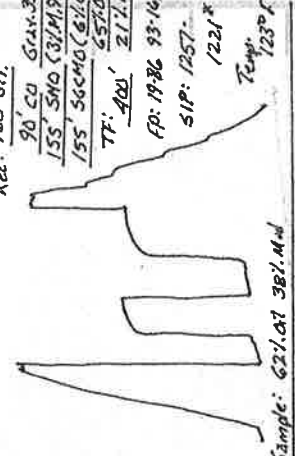
Rec. 15' 50CM (87.01' 92.1' Mud)



DST (2) 4407-4470

1ST OPEN: Bottom bucket 18 1/2 min.
2ND OPEN: " " 20 "

Rec. 160' 611



Total Sample: 621.07 381. Mud

