



**Fall & Associates**  
 Stake and Elevation Service  
 P.O. Box 222  
 Pretty Prairie, KS. 67570  
 785-243-7506

Date 5-25-17

Invoice Number 0522171

MURFIN DRILLING

1-22

Knox

Operator

Number

Farm Name

Elk-KS

22 28s 9e

1490'FNL 1100'FEL

County-State

S T R

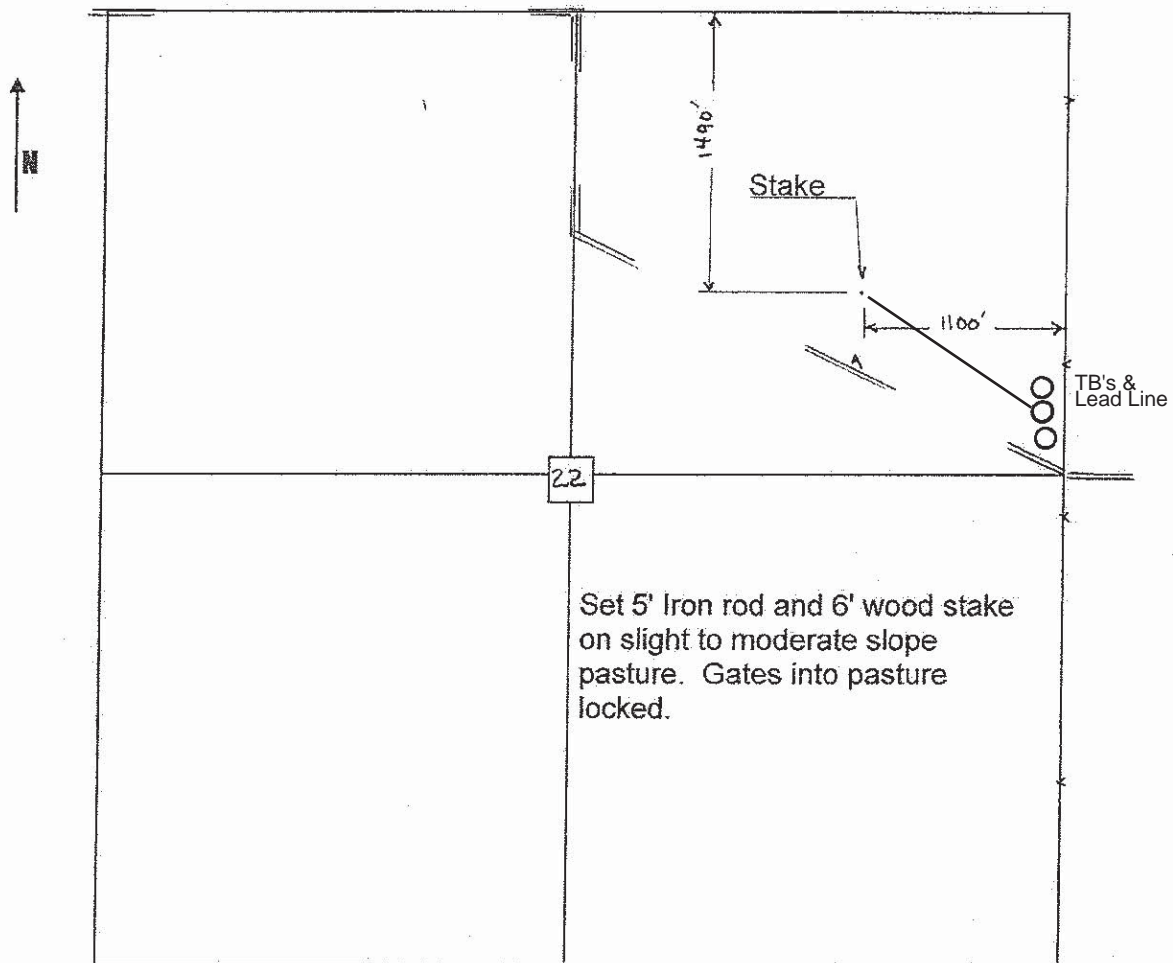
Location

Murfin Drilling  
 250 N. Water  
 Suite 300  
 Wichita, KS. 67202

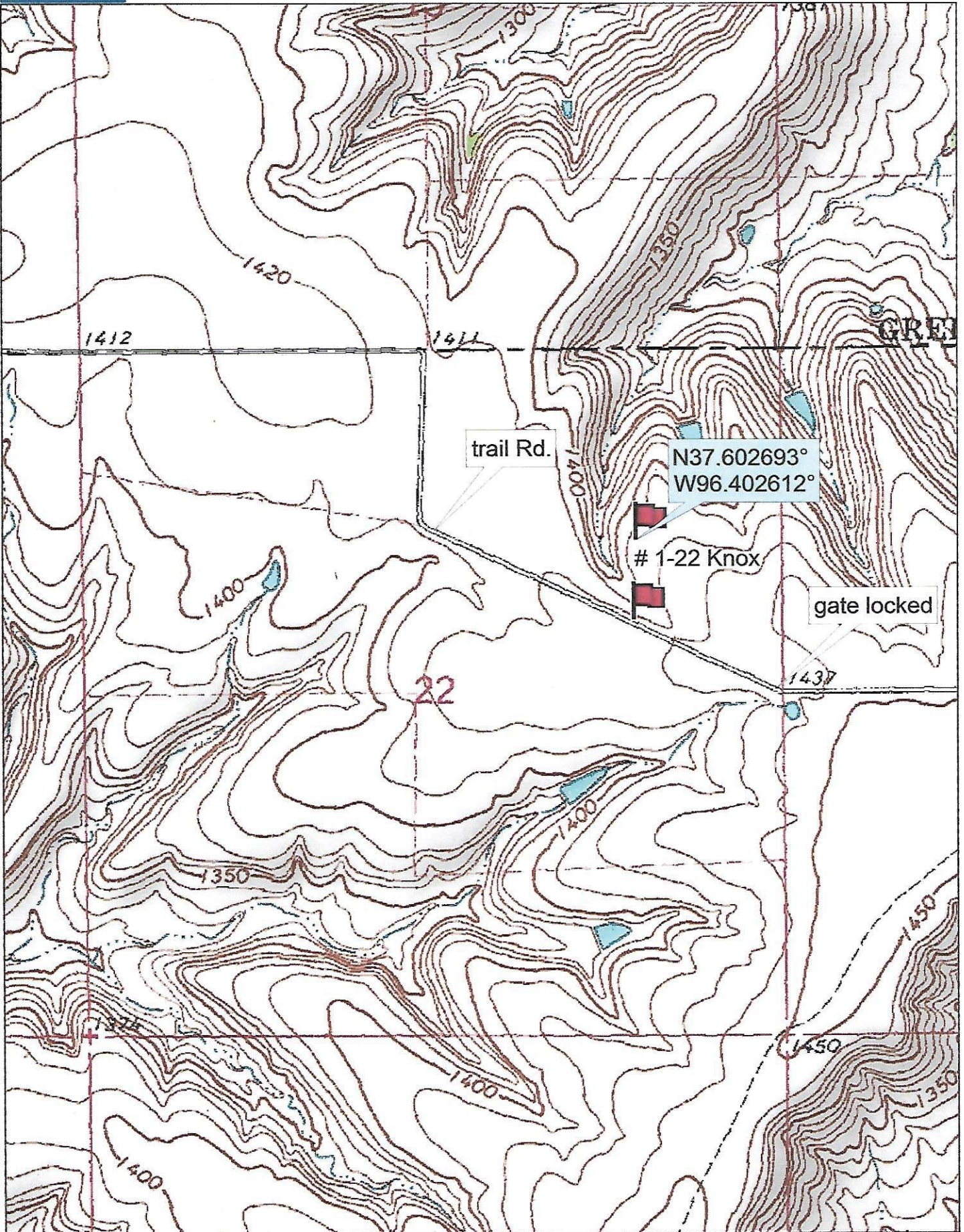
Elevation 1412 Gr.

Ordered By: Shauna

Scale 1"=1000'







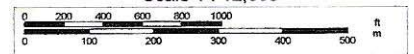
Data use subject to license.

© DeLorme. Topo North America™ 9.

www.delorme.com



Scale 1 : 12,000



1" = 1,000.0 ft Data Zoom 13-1