

Sean Deenihan

Petroleum Geologist

15-193-20992

GEOLOGIST'S REPORT

DRILLING TIME AND SAMPLE LOG

COMPANY Red Oak Energy, Inc.
LEASE Shull #1
FIELD Wildcat
LOCATION 1485 E.S.L. & 678' FWL
SEC 32 TWPSP 6 S RGE 33 W
COUNTY Thomas STATE Kansas
CONTRACTOR Murfin Drilling Rig #7
SPUD 4/5/16 COMP 4/11/17
RTD 4715' LTD 4716'
MUD UP 3600' TYPE MUD Chemical
SAMPLES SAVED FROM 3800' TO RTD
DRILLING TIME KEPT FROM 3800' TO RTD
SAMPLES EXAMINED FROM 3800' TO RTD
GEOLOGICAL SUPERVISION FROM 3800' TO RTD
REFERENCE WELL CND/DIL MIC/SON

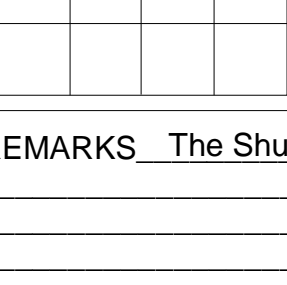
ELEVATIONS

KB 3078'
 DF _____
 GL 3073'

Measurements Are All From Kelly Bushing
CASING
 CONDUCTOR _____
 SURFACE 8-5/8" at 249'
 PRODUCTION None

ELECTRICAL SURVEYS
 E.L. WIRELINE
 CND/DIL MIC/SON

Formation	Sample Tops	E-log Tops	Struct Pss.
B/Anthracite		2728 (-1350)	
Heebner		3992 (-914)	
Lansing		4038 (-960)	
Martinelli		4300 (-1222)	
Pawnee		4406 (-1328)	
Cherokee Sh.		4498 (-1420)	
Mississippi		4614 (-1536)	

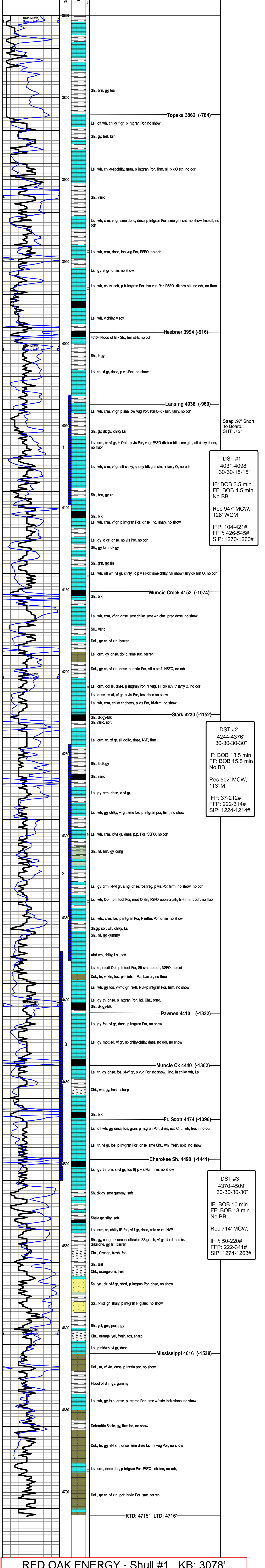


REMARKS The Shull #1 did not encounter any commercial oil reservoirs and therefore was plugged.

Respectfully Submitted,

Sean P. Deenihan

15-193-20992



Strap .97' Short to Board. SHT: .75"

DST #1
 4031-4098'
 30-30-15-15"
 IF: BOB 3.5 min
 FF: BOB 4.5 min
 No BB
 Rec 947' MCW,
 126' WCM
 IFP: 104-421#
 FFP: 426-545#
 SIP: 1270-1260#

DST #2
 4244-4376'
 30-30-30-30"
 IF: BOB 13.5 min
 FF: BOB 15.5 min
 No BB
 Rec 502' MCW,
 113' M
 IFP: 37-212#
 FFP: 222-314#
 SIP: 1224-1214#

DST #3
 4370-4509'
 30-30-30-30"
 IF: BOB 10 min
 FF: BOB 13 min
 No BB
 Rec 714' MCW,
 IFP: 50-220#
 FFP: 222-341#
 SIP: 1274-1263#