

# STEVEN P. MURPHY, P.G.

*Petroleum Geologist (KS #228)*

Cell 620.639.3030  
Fax 785.387.2400

RR#1, Box 69  
Otis, Kansas 67565  
geomurphy@gbta.net

Scale 1:240 (5"=100') Imperial  
Measured Depth Log

Well Name:	Foster C#1		
API:	15-167-24061-00-00		
Location:	Russell County		
License Number:	31428	Region:	Kansas
Spud Date:	5/25/2017	Drilling Completed:	5/30/2017
Surface Coordinates:	525' FNL & 1500, FEL (SE NE NW NE) Section 3-T14S-R15W		
Bottom Hole Coordinates:	Same as above (vertical well with minimal)		
Ground Elevation (ft):	1901'	K.B. Elevation (ft):	1910'
Logged Interval (ft):	2700'	To:	TD
Formation:	Topeka through Gorham Sand		
Type of Drilling Fluid:	Chemical (Mudco - Gary Schmidtberger)		

Printed by StripLog from WellSight Systems 1-800-447-1534 www.WellSight.com

## OPERATOR

Company: Jeff Crawford dba Lonestar Oil Co.  
Address: P.O. Box 417  
Victoria, KS 67671

## GEOLOGIST

Name: Steven P. Murphy, PG  
Company: Consulting Petroleum Geologist  
Address: 2501 Zarah Drive  
Great Bend, KS 67530

## LogTops (Datum)

Nabors performed the open-hole wireline logging with a stacked Dual Compensated Porosity Log, Dual Induction Log, & Microresistivity Log, The following are log tops of formations with associated datums (in parentheses) referenced to sea level:

King Hill 2862 (-956)  
 Queen Hill 2930 (-1020)  
 Heebner 3013 (-1103)  
 Lansing 3068 (-1158)  
 BKC 3310 (-1400)  
 Gorham Sand 3321 (-1411)

### DSTs

No drillstem tests were run on this well.

### COMMENTS

The operator elected to run 5 1/2" production casing to attempt a completion in the Gorham Sst.

After discussing the logs with Richard Leath with Nabors, he recommended that the Gorham Sst be initially perforated from 3338-3342. Another interval of the sand could be perforated from 3322-3324. No other zones above the Gorham Sst appeared productive.



Based on what I see on the logs, there appears to be a permeability barrier between the top of the sand and the interval beginning at 3335. I would begin at the top of the zone from 3322-3324. The lower zone can always be shot if the top isn't productive.

### ROCK TYPES

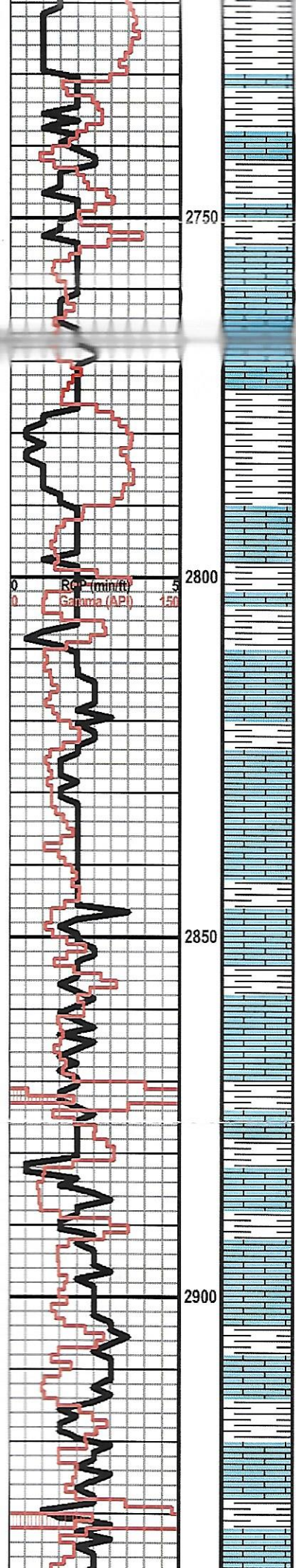
 Anhy	 Coal	 Lmst	 Shcol
 Bent	 Congl	 Meta	 Shgy
 Brec	 Dol	 Mrlst	 Slstst
 Cht	 Gyp	 Salt	 Ss
 Clyst	 Igne	 Shale	 Till

### OTHER SYMBOLS

<b>OIL SHOW</b>	 Dead	<b>INTERVAL</b>	<b>EVENT</b>
 Even	 Gas	 Core	 Conn
 Spotted		 Dst	 Rft
 Ques			 Sidewall

Curve Track 1 ROP (min/ft)  Gamma (API) 		Depth	Lithology	Oil Shows	Geological Descriptions	REMARKS
0	ROP (min/ft) 5 Gamma (API) 150					Royal Drilling, Inc WIRU on 5/25/17
					NOTE: The following formation tops	8 5/8" Surface Casing set @ 952' 5 1/2" Production Casing set 2' off bottom
		2700				Surveys:





SH: gry

TOPEKA 2788 (-878)

LS: crm-gry, vfxln, dense, sl chalky, NS

LS: crm-tan-gry, fxln, dense, sl chalky, NS

LS: as above, sl chert

LS & CHT: as above

KING HILL SH 2866 (-956)

SH: blk, carb

LS: crm-tan-gry, vfxln, dense, sl foss, NS

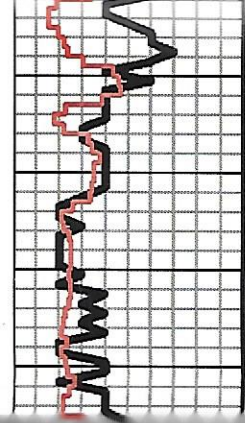
LS: wht-tan, vfxln, dense, abund wht cht, sl chalky, NS

LS & CHT: as above

LS: as above w/tr dk stn, tight

QUEEN HILL SH 2928 (-1018)

SH: blk, carb



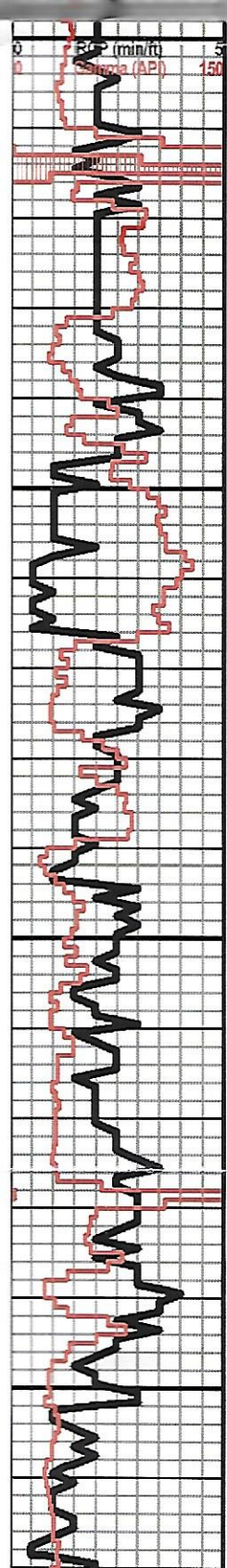
LS: crm-brn, fxlIn, sl chalky & foss, NS

○ LS: crm-tan-gry, f-vfxln, sl ool, mostly dense w/rare fr ppt por, nsfo, sl dead stn, no odor

● LS: as above w/ssfo, fr ppt & vug por, sl odor

○ LS: crm-tan, fxlIn, sl ool, fr inxln por, ssfo, even lite stn, fr odor

LS: wht-tan, vfxln, dense, sl chalky, NS



LS: as above

**HEEBNER 3011 (-1101)**

SH: blk, carb

SH: gry-blk, grn

SH: as above

LS: wht-tan-brn, vfxln, dense, chalky, NS

SH: gry-grn-blk

SH: as above

**LANSING 3066 (-1156)**

LS: wht-tan-gry, vfxln, dense, sl chalky, NS

SH: gry-blk-grn

○ LS: wht-tan, fxlIn, oolic in pt, wht chert, fr vug por, ssfo, slt stn, sl odor

SH: gry-brn-grn-blk

○ LS: wht-tan-gry, oolic in pt, cherty, some fr vug por, ssfo, even stn, fr odor

● LS: as above w/incr in show

SH: gry-grn brn

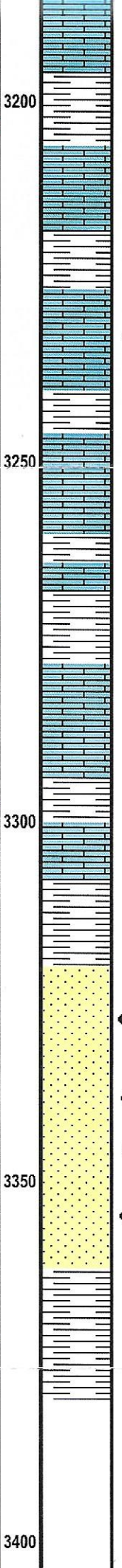
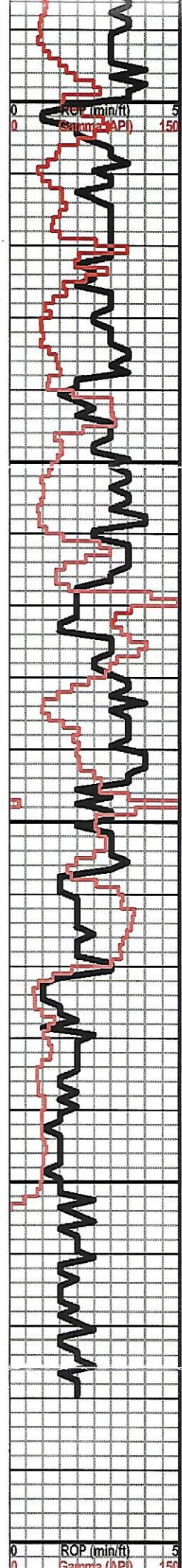
○ LS: wht-gry, fxlIn, sl foss, sl ool, wht chert, pr vug por, vssfo, spotty stn, fr odor

○ LS: as above w/abund wht chert, pr show & gry-grn-brn sh

● LS: wht-gry, fxlIn, ool, pr-fr vug por, ssfo, spotty stn, fr odor

LS: wht fxlIn, oolic, fr vug por, NS





LS: wht-tan-gry, vfxln, oolitic, dense, NS

SH: gry-grn-brn

LS: wht-tan-gry, vfxln, sl oolic, dense, NS

SH: gry-grn-brn

● LS: wht-tan-brn, fxl, ool in pt w/fr ppt por, ssfo, spotty stn, sl odor

LS: as above w/abund gry-grn shale

LS & SH: as above, NS

LS: wht-tan, vfxln, dense, sl chalky, cherty, NS

SH: gry-grn-blk

LS: crm-gry, vfxln, dense, NS

LS: wht-tan-gry, vfxln, dense, chalky, NS

LS: tan-gry, vfxln, dense, cherty, NS

LS: tan-brn, vfxln, dense, sl foss, NS  
BKC 3307 (-1397)

SH: gry-blk-grn-red

**GORHAM SST 3321 (-1411)**

● Sst: clr-tan, med-coarse gr, sub-ang, prly std, firm-friable clusters, gd inter-gran por, fsfo, even sat stn, str odor

● Sst: as above

● Sst: as above

● Sst: as above

SH: gry-blk-grn

RTD - 3380'

LTD - 3382'

CFS 1/2 hr, short trip @ 3300' to base of surface casing



# GLOBAL OIL FIELD SERVICES, LLC

2963

REMIT TO 24 S. Lincoln  
Russell, KS 67665

SERVICE POINT: Russell, KS

DATE <u>5-30-17</u>	SEC <u>3</u>	TWP <u>N15</u>	RANGE <u>15W</u>	CALLED OUT	ON LOCATION	JOB START	JOB FINISH
LEASE <u>Fogler C</u>	WELL # <u>1</u>	LOCATION <u>C</u>			COUNTY <u>Russell</u>	STATE <u>KS</u>	
OLD OR <u>NEW</u> (CIRCLE ONE)							

CONTRACTOR <u>Royal Drilling Rig #1</u>	
TYPE OF JOB <u>Production String</u>	
HOLE SIZE <u>7 1/2"</u>	T.D.
CASING SIZE <u>5 1/2"</u>	DEPTH
TUBING SIZE	DEPTH
DRILL PIPE	DEPTH <u>3354.91</u>
TOOL	DEPTH <u>3354.91</u>
PRES. MAX.	MINIMUM
MEAS. LINE	SHOE JOINT <u>15.70'</u>
CEMENT LEFT IN CSG. <u>15.70'</u>	
PERFS	
DISPLACEMENT <u>80 BBL</u>	EQUIPMENT
PUMP TRUCK # <u>417</u>	CEMENTER <u>Bean</u>
BULK TRUCK # <u>481</u>	HELPER <u>Jason</u>
BULK TRUCK # <u>473</u>	DRIVER <u>Tom</u>
	DRIVER <u>Duke</u>

OWNER	
CEMENT AMOUNT ORDERED	<u>150 SY 100/40 P&amp;Z</u> <u>150 SY COM 10% SACT 2% S&amp;L</u>
COMMON	@
POZMIX	@
GEL	@
CHLORIDE	@
ASC	@
HANDLING	@
MILEAGE	@
TOTAL	

REMARKS:  
Run in casing with 100/40 mix, 100/40 mix  
100/40 mix, 100/40 mix 50000  
P&Z plug w/ 80 BBL H2O, 100/40 mix  
100/40, 100/40 mix

CHARGE TO: Louisville  
STREET

*Production casing  
5 1/2" - 3380'  
300 sacks*

NAME  
SIGNATURE [Signature]

SERVICE	
DEPTH OF JOB	
PUMP TRUCK CHARGE	
EXTRA FOOTAGE	@
MILEAGE	@
MANIFOLD	@
TOTAL	

PLUG & FLOAT EQUIPMENT	
1 AFV S&L	@
1 100/40 P&Z	@
30 B&S&L	@
30 100/40 P&Z	@
TOTAL	

SALES TAX (if Any)  
TOTAL CHARGES  
DISCOUNT IF PAID IN 30 DAYS



# GLOBAL OIL FIELD SERVICES, LLC

2950

REMIT TO 24 S. Lincoln  
Russell, KS 67665

SERVICE POINT:  
Russell, KS

DATE 5-26-17	SEC. 3	TWP. 14S	RANGE 15W	CALLED OUT	ON LOCATION	JOB START	JOB FINISH
LEASE Fossil	WELL # 3	LOCATION			COUNTY FILLIS	STATE KS	9 AM
OLD OR <u>NEW</u> (CIRCLE ONE)							

CONTRACTOR Russell Drilling RLL 1

TYPE OF JOB SURFACE

HOLE SIZE 12 1/4 T.D.

CASING SIZE 4 1/2 DEPTH 952'

TUBING SIZE DEPTH

DRILL PIPE DEPTH

JOL DEPTH

PRES. MAX. MINIMUM

MEAS. LINE SHOE JOINT 42.24'

CEMENT LEFT IN CSG.

PERFS

DISPLACEMENT 59 BBL

### EQUIPMENT

PUMP TRUCK CEMENTER Boas

# 417 HELPER Jason

BULK TRUCK

# 472 DRIVER Tom

BULK TRUCK

# DRIVER

### REMARKS:

RUN IN CASING, CIRCULATING MIX 350 SY,  
PUMP PLUG W/ 59 BBL LIMO PLUG, SURT  
IN @ 200 PSI, CEMENT DID CIRCULATE

CHARGE TO: LOWESTAR

STREET

OWNER

CEMENT AMOUNT ORDERED 350 SY LIMO PLUG  
2% FC 2% GEL

COMMON	@	
POZMIX	@	
GEL	@	
CHLORIDE	@	
ASC	@	
	@	
	@	
	@	
	@	
	@	
	@	
	@	
HANDLING	@	
MILEAGE		
		TOTAL

### SERVICE

DEPTH OF JOB		
PUMP TRUCK CHARGE		
EXTRA FOOTAGE	@	
MILEAGE	@	
MANIFOLD <u>SURFACE HEAD</u>	@	
	@	
	@	
		TOTAL

### PLUG & FLOAT EQUIPMENT

<u>LIMED PLUG</u>	@	
<u>BARREL PLATE</u>	@	
	@	
	@	
		TOTAL

SALES TAX (If Any)

TOTAL CHARGES

DISCOUNT IF PAID IN 30 DAYS

Surface Pipe  
8 5/8" - 952'  
350 sacks  
Did circulate