



Scale 1:240 (5"=100') Imperial
Measured Depth Log

Well Name: Plummer Unit #1
Location: 6-29SW-40W
License Number: API: 15-187-21336
Spud Date: 04/25/2017
Surface Coordinates: 255' FNL, 3810' FEL

Region: Stanton Co., KS
Drilling Completed: 05/04/2017

Bottom Hole
Coordinates:
Ground Elevation (ft): 3319 K.B. Elevation (ft): 3330
Logged Interval (ft): 4200 To: 5650 Total Depth (ft): 5650
Formation: Mississippian
Type of Drilling Fluid: Chemical

Printed by MUD.LOG from WellSight Systems 1-800-447-1534 www.WellSight.com

OPERATOR

Company: White Exploration, Inc.
Address: 1635 N. Waterfront Pkwy
Ste. 100
Wichita, KS, 67206

GEOLOGIST

Name: Andrew White
Company: White Exploration, Inc.
Address:

Remarks

Due to positive DST results and log evaluation, the decision to run pipe was made to test the Keyes Sand interval.

General Info

Drilling Contractor: Murfin Rig 21

Logs: ELI Wireline Services
Compensated Density/Neutron, Dual, Micro, Sonic

Drilling Mud: Mudco/Service Mud, Inc.

DST: Trilobite

Surveys: 499'-.5, 1003'-.4, 1750'-.7, 2274'-.6, 3097'-.2, 3794'-.6, 5450'-1.6, 5650'-1.5

Daily Status

04/25/17: MIRT and spud @ 2:30 p.m.

04/26/17: Drilling ahead @ 992'

04/27/17: Conditioning hole for Surface casing, set 41 jts 8-5/8" 24# casing @ 1750', 400 sacks H-con cement w/ 6% gel, 3% cc and 1/4 sac Phenoseal, 225 sacks common w/ 2%cc and 1/4 sac Phenoseal

04/28/17: Drilling ahead @ 1917'

04/29/17: Drilling ahead @ 2973'

04/30/17: Drilling ahead @ 4105', Storm shut down rig, come out of hole to circ in Surface casing

05/01/17: circ behind surface, waiting on dozer @ 4359'

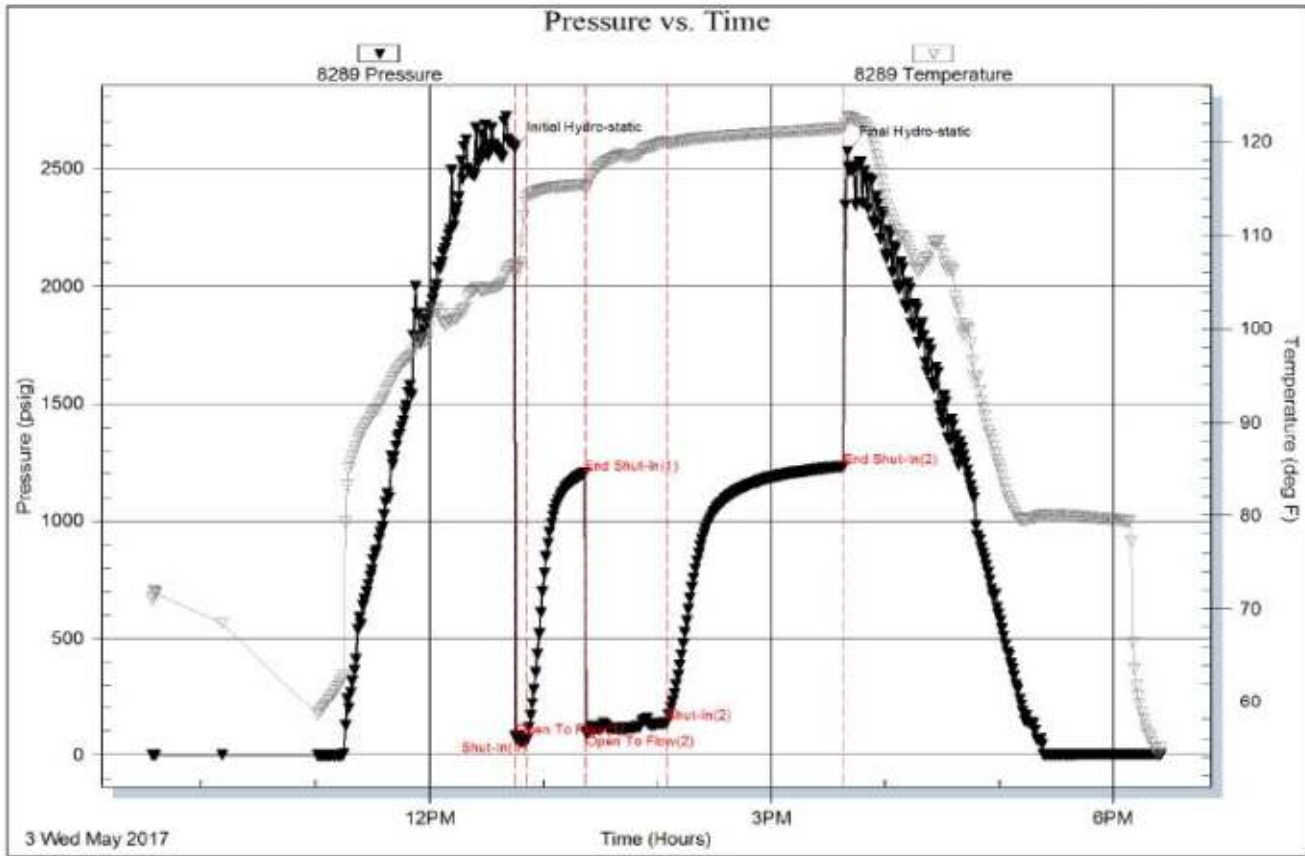
05/02/17: Drilling ahead @ 4753'

05/03/17: Circ @ 5450' for DST #1

05/04/17: Drilling ahead @ 5634'

05/05/17: Running 5-1/2" 15.5# production casing @ 5652', cemented with 200 sacks H-Long Cement, DV tool @ 3199', cemented with 415 sacks of H-Con common

	White Ex				White			Berexco			White			Stelbar	
	Arnold #2				Arnold #1			RA 1-6			Arnold #2			Plummer 1-31	
	6-29S-40W				6-29S-41W			6-29S-40W			6-29S-40W			31-28S-40W	
	1285' FSL, 2240' FEL				490'FSL, 1515' FEL			800' FSL, 2975' FEL			1285' FSL, 2240' FEL			1310' FSL, 1300' FEL	
	KB:3330				KB: 3322			KB: 3330			KB: 3325			KB: 3321	
	Sample	Log	Datum		Relationship			Relationship			Relationship			Relationship	
Heebner		3687	-357		+14			+12			+3			+10	
Lansing		3746	-416		+13			+21			+5			+5	
Cherokee	4538	4541	-1211		+14			+3			-1			+11	
Morrow	5014	5025	-1695		+4			-4			-10			+2	
LMM	5340	5342	-2012		+7			+2			-3			-8	
Miss	5560	5546	-2216		-17			-5			-33			+19	



ROCK TYPES

LITHOLOGY

- Anhy
- Bent
- Brec
- Cht
- Clyst
- Coal
- Congl

- Dol
- Gyp
- Ign
- Lmst
- Meta
- Mrlst
- Salt
- Shale

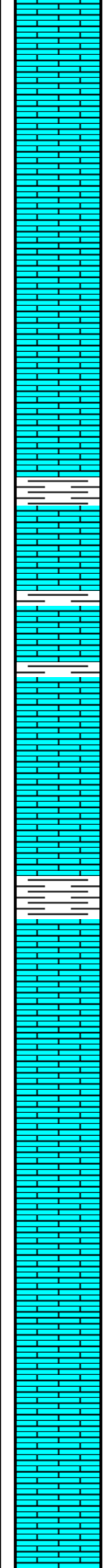
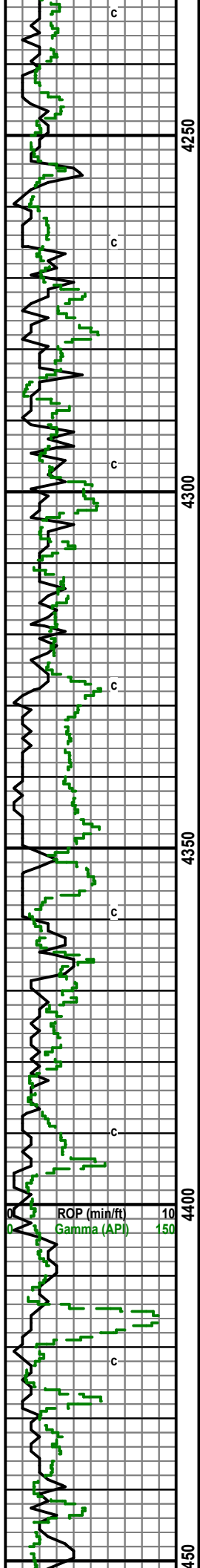
- Shcol
- Shgy
- Sltst
- Ss
- Till

- STRINGER
Anhy

- Arg
- Bent
- Coal
- Dol
- Gyp
- Ls
- Mrst
- Sltstrg

- Ssstrg
- OIL SHOW
- Even
 - Spotted
 - Ques
 - Dead

Curve Track 1		Depth	Lithology	Geological Descriptions	TG, C1-C5					
ROP (min/ft)	Gamma (API)				TG (Units)	C1 (units)	C2 (units)	C3 (units)	C4 (units)	C5 (units)
0	150	42		LS: gry, mcxln, Sh: gry						



LS: gry-crm, mcrxln

LS: gry-crm, mcrxln, some fxln, sli fos

LS: gry-crm, fxln, some mcrxln, fos

LS: crm, sli gry, f-mcrxln, sli fos, sli chalky, Sh: gry-lt gry

LS: crm-gry, fxln, some mcrxln-gran, fos, sli chalky, Sh: A.A.

No Sample

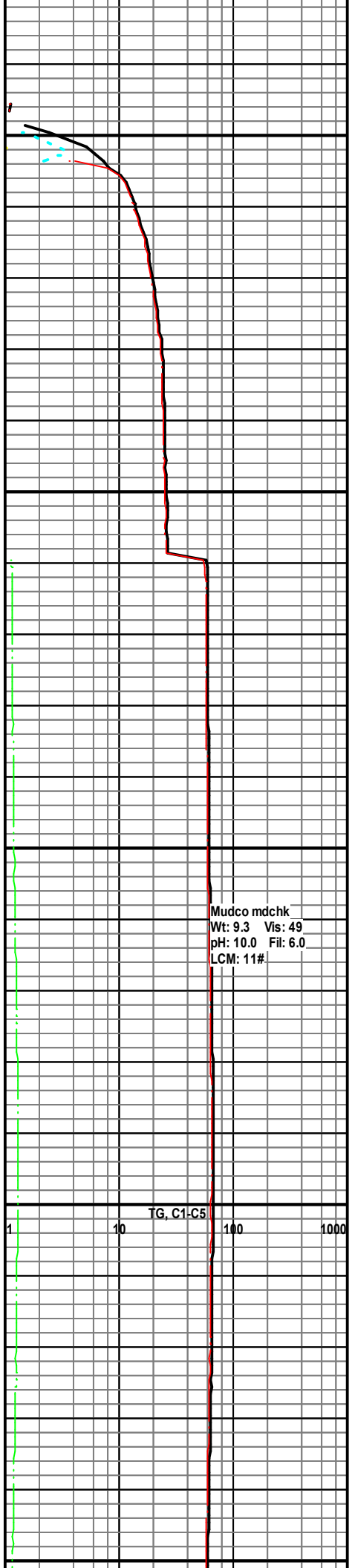
LS: tan-crm, sli gry, mcrxln, some fxln, few ool, Sh: gry-lt gry

LS: crm, sli tan-gry, mcrxln, sli fos

LS: crm, mcrxln, ool, chalky

A.A.

LS: gry, mcrxln, sli chalky



Mudco mdchk
 Wt: 9.3 Vis: 49
 pH: 10.0 Fil: 6.0
 LCM: 11#

TG, C1-C5

1 10 100 1000

ROP (min/ft) 10
 Gamma (API) 150

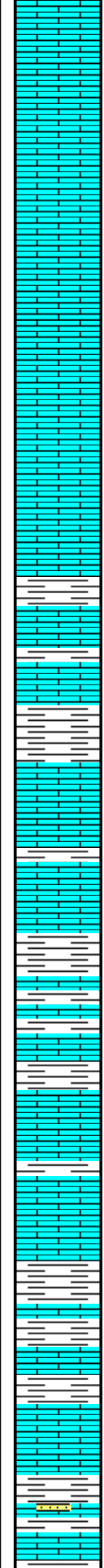
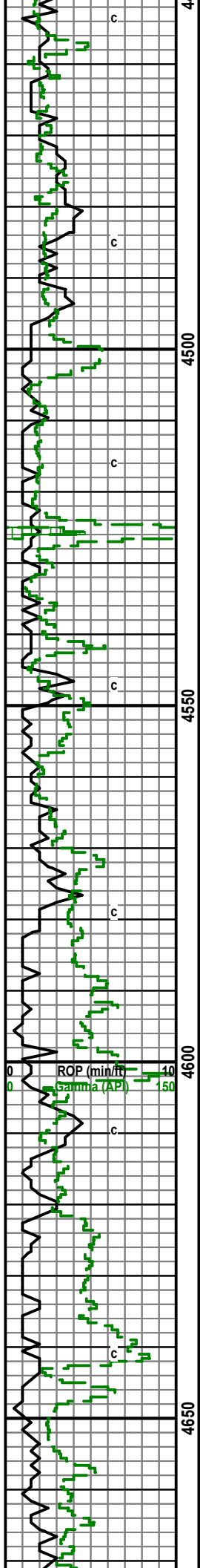
4400

4350

4300

4250

4500



Pr. Sample, A.A. ?

LS: crm, sli tan, mcrxln

LS: crm-gry, mcrxln, chalky

Pr. Sample

LS: crm-tan, f-mcrxln, fos, Sh: gry

Sh: gry-drk gry, LS: gry-crm, mcrxln, chalky

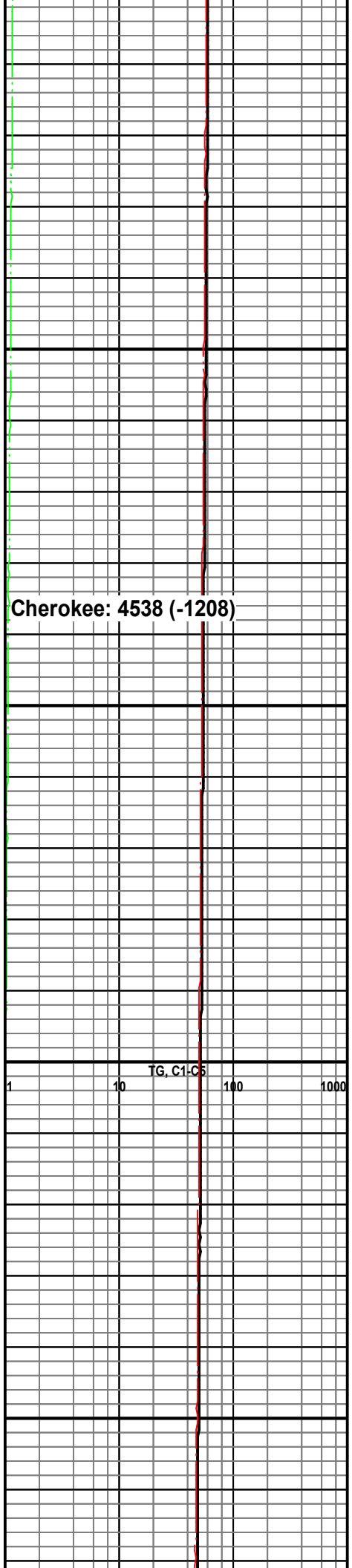
Sh: gry, some LS: crm-tan-gry, mcrxln

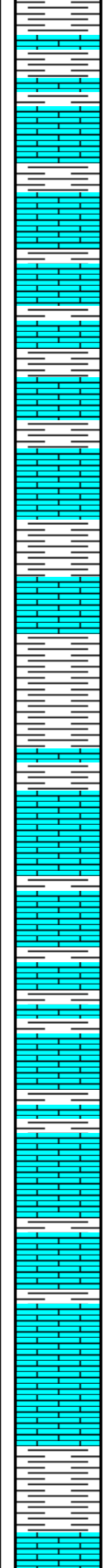
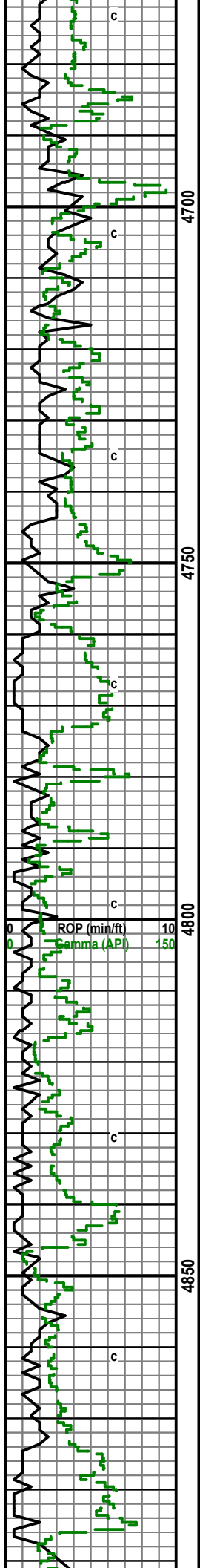
A.A.

LS: crm-gry, mcrxln, some fxln, sli fos, Sh: gry

Sh: gry-drk gry, some LS: A.A.

Sh: A.A., some LS: A.A., some SS: clear-opaq, sub ang-ang, pr srt, limey, glauc, no vis por, NS





Sh: gry, some LS: gry-crm, mcrxln, sli sandy

LS: crm, mcrxln, sli fos, Sh: gry-lt gry

LS: crm-gry, mcrxln, sli fos, Sh: gry

Sh: gry-drk gry- lt gry, some LS: A.A.

Sh: gry-drk gry-lt gry, some LS: crm, sli gry, mcrxln, chalky

Sh: A.A. some LS, crm-gry, mcrxln sli fos

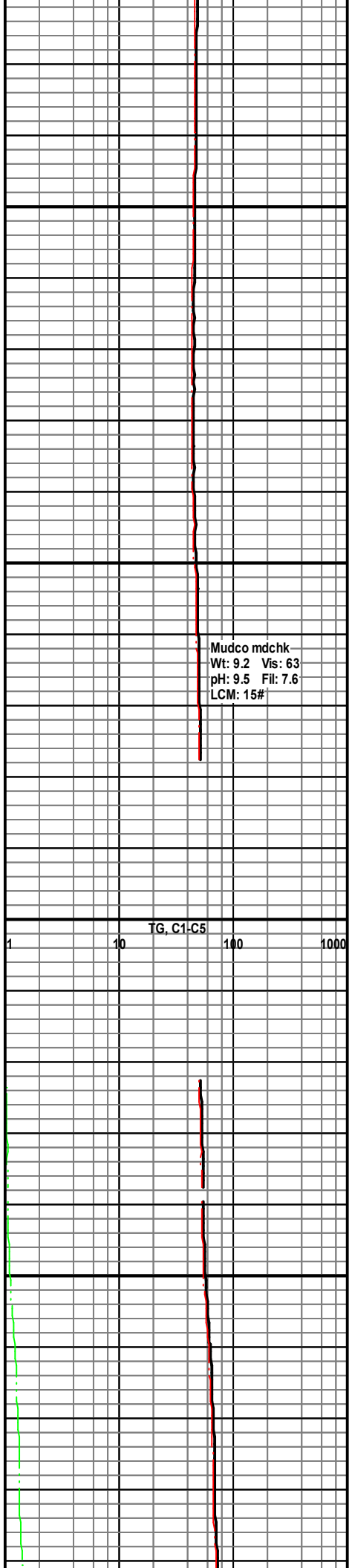
LS: crm-gry, sli tan, f-mcrxln, sli fos, Sh: gry

LS: crm-tan, sli gry, f-mcrxln, sli fos, Sh: A.A.

LS: A.A., Sh: A.A.

LS: gry-crm, f-mcrxln, sli fos, some Sh: gry

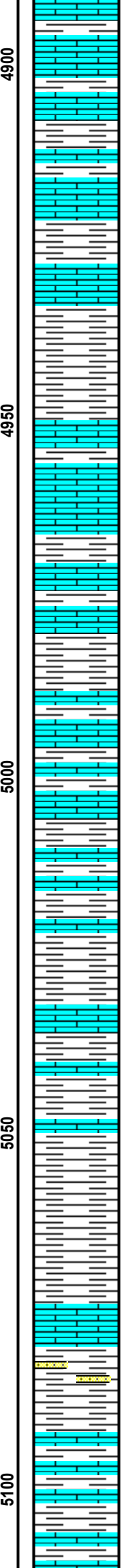
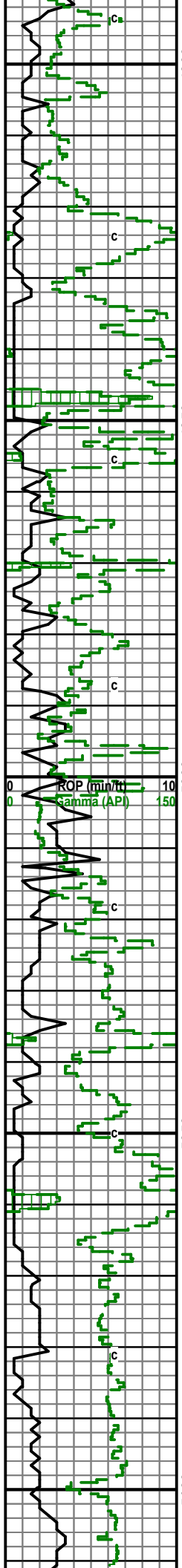
Sh: gry-drk gry, LS: A.A.



Mudco mdchk
 Wt: 9.2 Vis: 63
 pH: 9.5 Fil: 7.6
 LCM: 15#

TG, C1-C5

1 10 100 1000



LS: gry, sli crm, mcrxln, Sh: gry

LS: gry-crm, mcrxln, sli fos, Sh: gry-drk gry

LS: crm-gry, mcr-fxln, Sh: gry-drk gry-blck

LS: gry-crm, mcr-fxln, Sh: A.A.

LS: brwn, sli crm-gry, mcrxln, Sh: A.A.

Sh: gry-drk gry-blck, some LS: gry-crm, mcrxln

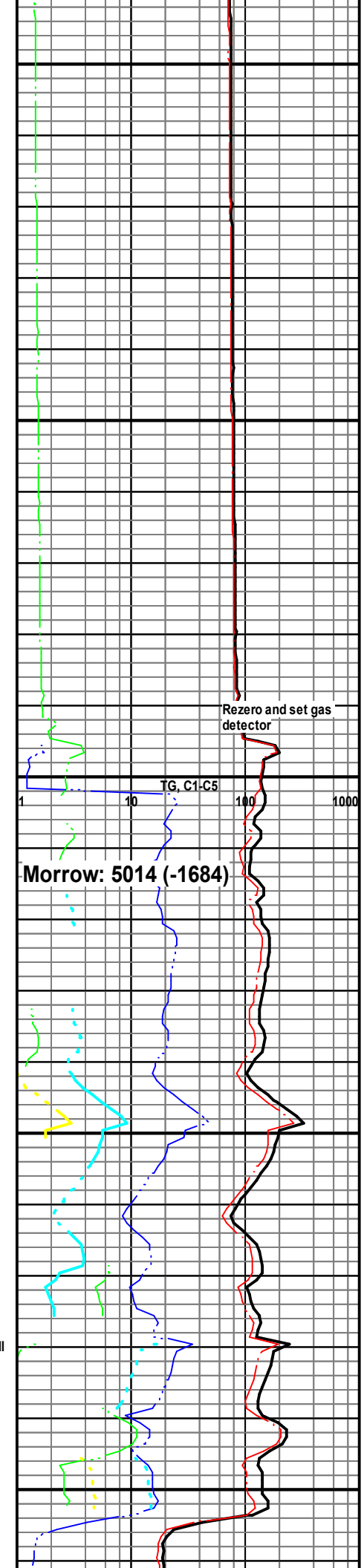
Sh: A.A. some LS: gry, sli crm, mcrxln

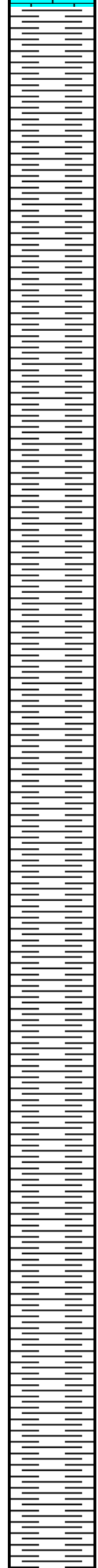
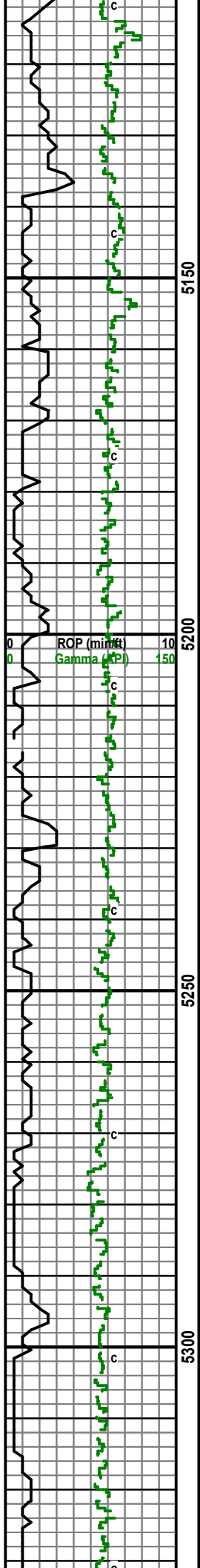
A.A.

Sh: drk gry-gry-blck, some LS: crm-gry, f-mcrxln, sli sandy

Sh: A.A. some LS: A.A. and SS: white-opaque, sli tan, f-vfgm, sub rnd, well sort, limey, no vis por, no fluor NS

LS: crm-tan, mcr-fxln, sli fos, sli sandy, Sh: gry-drk gry





Sh: gry-drk gry-lt gry, some LS: gry-crm, mcrxln, sli sandy

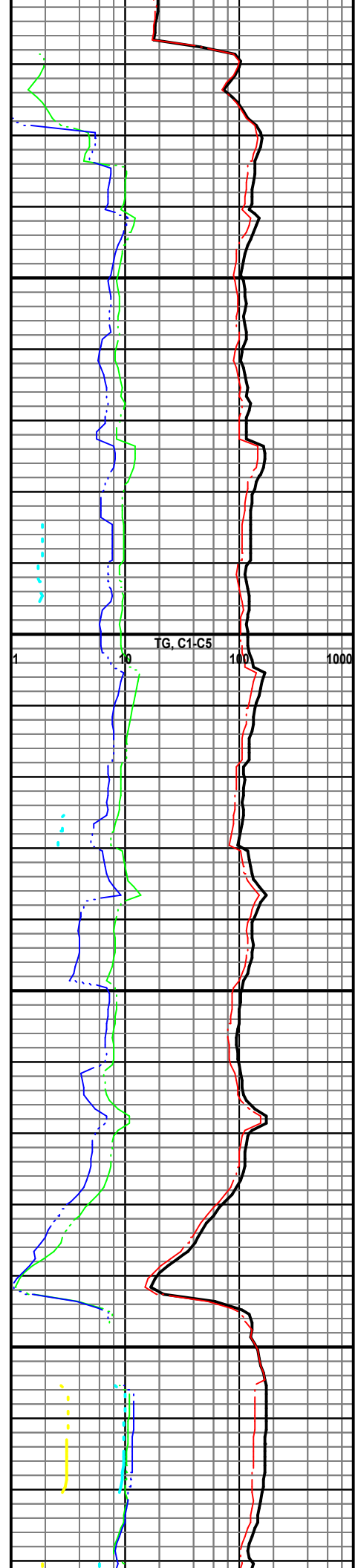
Sh: A.A. with LS: A.A.

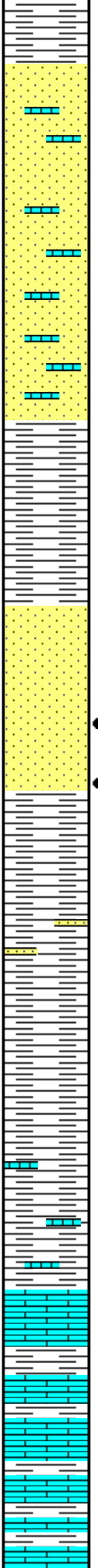
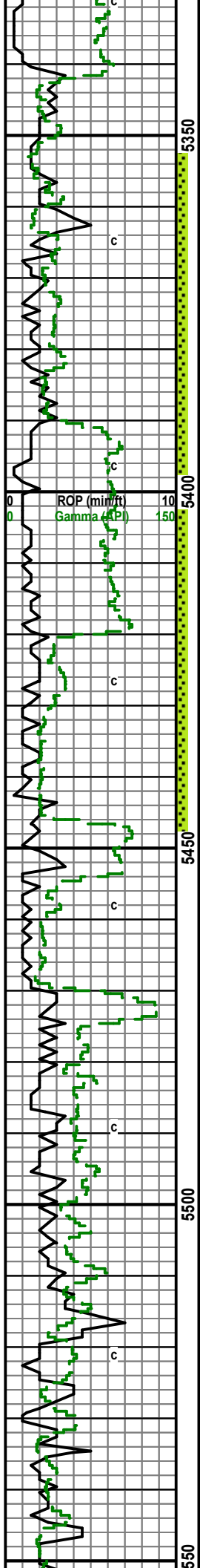
Sh: gry-drk gry-lt gry

Sh: A.A.

Sh: A.A.

Sh: A.A.





Mostly Sh: gry-drk gry, some SS: clear-opaque, sub ang, pr sort, limey

A.A.

SS: opaque-crm, fgm, few mgrn, sub ang-sub rnd, fr sort, sli glauc, sli lime, pos show gas cond, no fluor, no odor

SS: opaque, sli gry-tan, some sli crm, fgm, few mgrn, sub ang-sub rnd, fr sort, sli glauc, calc,

Sh: gry-drk gry

SS: opaque, sli crm, fgc, sub ang-sub rnd, fr sort, sli glauc, NS

SS: A.A. one piece had fr SFO

SS: clear-opaque, mgrn-fgm, sub ang-sub rnd, fr-pr sort, sli glauc, no odor, dull yellow fluor, fr SFO in few pieces, sli SFO in few dead oil in few

Sample mostly Sh, some SS: opaque-crm, vf-fgm, some mgrn, sub ang, fr-pr sort, calc

Sh: gry-drk gry, some grn-red, LS: crm, sli grn, fxln, prt sandy

LS: crm-grm-red fxln, sandy, Sh: A.A.

A.A.

LMM: 5340 (-2010)

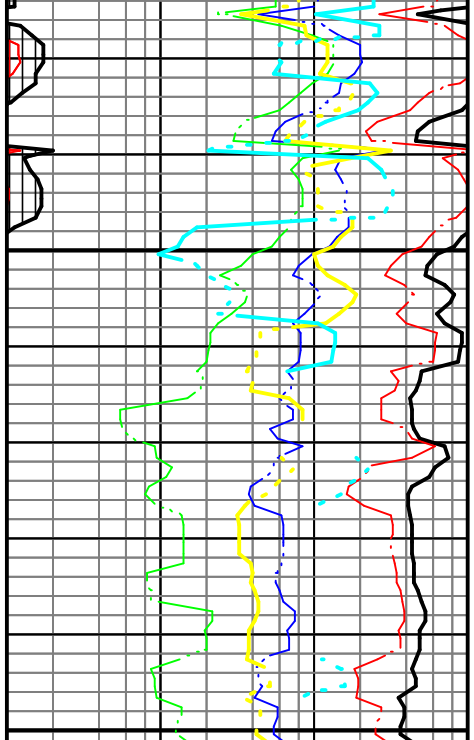
DST #1 5350-5450
 5-30-45-90
 IF: BOB 2"
 FF: BOB ASAO
 Rec: 2230' GIP, 275' GOM
 (10% G, 5% O, 85%M)
 Sample: 1000#, 25% G, 5%O,
 85%M, Rw=1.45 @ 85
 IFP: 65 ISIP: 1203
 FFP: 137 FFIP: 1230

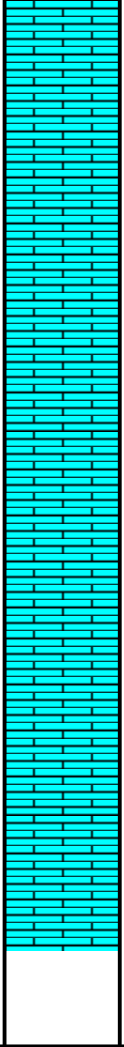
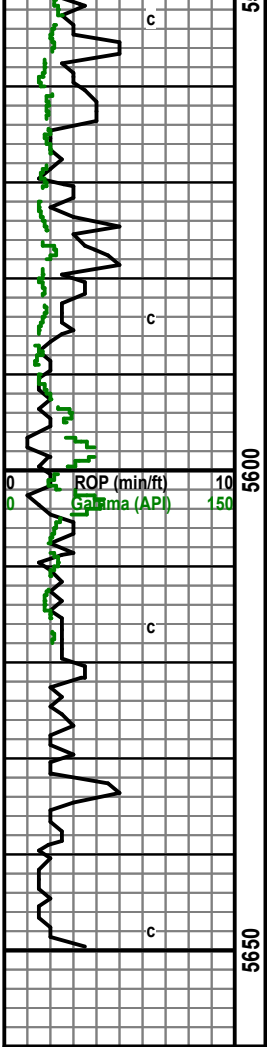
CFS 60 min

CFS 60 min
 Strap 1.27 long

Mudco mdchk
 Wt: 9.3 Vis: 65
 pH: 9.5 Fil: 8.0
 LCM: 12#

CFS 60 min





sample mostly Sh: LS: crm, fxIn

A.A.

LS: crm, mcr-fxIn, (sample mostly Sh)

LS: crm mcr-fxIn, sli cherty, sli fos (sample mostly Sh)

RTD: 5650

LTD: 5652

