

KIM B. SHOEMAKER

CONSULTING GEOLOGIST

316-684-9709 * WICHITA, KS

GEOLOGIST'S REPORT

DRILLING TIME AND SAMPLE LOG

COMPANY **RAYMOND OIL COMPANY, INC.**

LEASE # **1-29** KISTLER KHS

FIELD **Wildcat**

LOCATION **129' ENL & 2596' FWL**

SEC **29** TWP **9s** RGE **34W**

COUNTY **THOMAS** STATE **KANSAS**

CONTRACTOR **L. D. DRILLING, INC.**

SPUD **5-29-17** CONDP **6-16-17**

RTO **4900** LTD **4900**

MUD UP **3503** TYPE MUD **CHEMICAL**

SAMPLES SAVED FROM _____

DRILLING TIME KEPT FROM _____

SAMPLES EXAMINED FROM _____

GEOLOGICAL SUPERVISION FROM _____

GEOLOGIST ON WELL _____

Kim B. Shoemaker

ELEVATIONS

KB **3247**

DF _____

GI **3242**

Measurements Are All
From **3247 KB**

CASING
SURFACE 13 3/8" @ 303'

PRODUCTION _____

ELECTRICAL SURVEYS
DUAL IND, DEN-S-N.

FORMATION TOPS

LOG

SAMPLES

ANHYDRITE

2780+467

2784 + 463

B/ANL

2809 + 438

2813 + 434

STOTLER

3778- 531

3780- 533

HEEBNER

4112- 865

4114- 867

LANSING

4153- 906

4155- 908

STARK

4380- 1133

4381- 1134

MARMATON

4472- 1225

4472- 1225

FORT SCOTT

4637- 1390

4634- 1387

CHEROKEE

4666- 1419

4664- 1417

MISSISSIPPI

4800- 1553

4794- 1547

29

REMARKS

5-29-17 SPUD 6-12 @ 4430'
 5-30 @ 306' 6-13 @ 4630'
 5-31 @ 1055' 6-14 @ 4715'
 Down Rain 6-15 @ 4810'
 6-4 @ 1558' 6-16 @ 4900'
 6-5 @ 2131'
 6-6 @ 3030'
 6-7 @ 3540'
 6-8 @ 3820'
 6-9 @ 4251' stuck
 6-10 @ 4251'
 6-11 @ 4375'

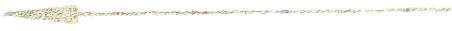
API: 15-193-20924

LEGEND



DRILLING TIME IN MINUTES
PER FOOT

Rate of Penetration Increases



5" 10" 15" 20" 25"

LITHOLOGY

DEPTH
2700

SAMPLE DESCRIPTIONS

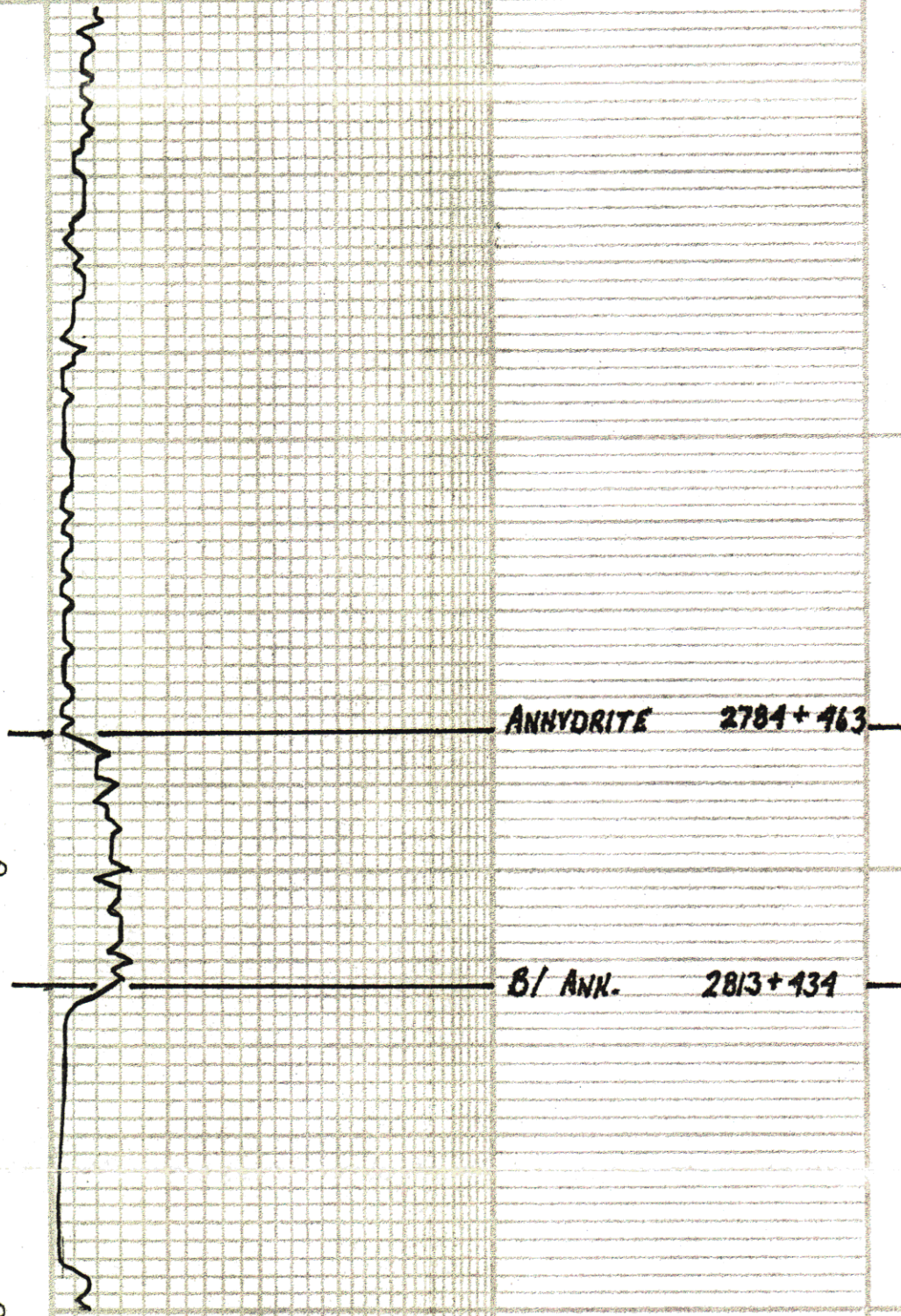
REMARKS

2800

ANHYDRITE 2784+463

B/ ANK. 2813+434

2850



3500

SAMPLES ARE LAGGED

Rd Sdy sh.

ls. wt. Pak St. Foss. S. A

sh. Rd Silty.

Rd. LG. Sdy sh.

sh. Rd Silty.

3600

Dol. In Fxla Svc.

A LG.

ls. LG. Vsh chly.

ls. wt. V Fxla Svc.

ls. LG. Vsh Foss.

VIS: 46

WT: 8.7

WL: 8.8

CWL: 6300

sh. Rd Sdy.

sh. LG.

WABAUNSEE 3691-444

3700

ls. Bl. Sl. Foss.

sh. Bl.

ls. G. In Sl. Foss Sl. Calcitic.

ls. In G. Sl. Foss.

ls. In G. VSl. A

ls. Lt. G. Sl. Foss.

sh. Lt. Blue. G.

STOTLER 3780-533

3800

ls. In G. Sl. Foss Sl. Calcitic

ls. G. Sl. Foss.

ls. wt. Sl. Foss Sl. Ch. H.

ls. wt. Sl. Foss.

sh. Lt. G.

ls. In Sl. Foss.

ls. In G. VSl. Foss.

sh. Bl.

HOWARD 3857-610

3900

ls. wh. G. Foss Sl. Ch. H.

sh. G. G.

ls. In wt. Sl. Foss Sl. A

sh. Blue. G.

LS. wt. Foss. Sil. Chlg.

LS. T. wt. Sil. Foss. Sil. A

LS. wt. Foss. VSil. Chlg.

LS. T. wt. Sil. Foss. Sil. G. leitic

Sh. Rd. Sil.

LS. wt. Foss. Sil. A

9

LS. wt. Sil. Foss. Foss. 'Vuggy'

4000

LS. wt. Sil. Foss. Sil. Chlg.

Sh. DK. Sil. Foss.

Sh. Ltg. Rd.

LS. wt. Foss. Sil. 'Vuggy'

LS. Ltg. Rd.

Sh. Rd. Pat.

LS. wt. Sil. Foss. Sil. A

Sh. AKG. Blk.

VIS: 48
WT: 9.1
WG: 9.6
CHL: 7600

LS. Ltg. VSil. Chlg.

LS. wt. Foss. Sil. Foss.

4100

LS. wt. Foss. VSil. Chlg.

Sh. Blk Carb.

Sh. Lt Blue G.

TORONTO 4138 - 891

LS. wt. Sh. Foss. Sh. A. P. No. of Blk. ad. Str. = Hvy. Fr. No Flour No odor

Sh. Rd

LANSING 4155-908

LS. Thwt. ooc. Sh. ooc. Sh. Chly.

LS. wt. Lt. G. VSh. Foss. Sh. A

Sh. Lt Blue

Sh. Rd

LS. wt. Sh. Foss. Foss. Sh. A

Sh. Rd. Lorange

LS. Th. Lt. G. Foss. ooc. VSh. Chly.

LS. Thwt. Sh. Foss. Dol. wt. Frsh. Suc.

LS. G. VSh. Foss.

Sh. Chly.

LS. wt. Foss. Fr. P. No. of Dr. Bl. Blk. Solid Str. SSFO No Flour No odor

Sh. Chly.

LS. wt. Lt. G. Sh. Foss. ooc.

LS. Thwt. Sh. Foss. Sh. A

LS. wt. Foss. Sh. ooc. Sh. A

LS. wt. Frsh. Cut

LS. Th. wt. VSh. Foss. VSh. Chly.

MUNCIE CREEK 4296-1049

Sh. Blk Carb. LS. Bl. VSh. Foss.

Sh. Blue G.

LS. wt. Sh. Foss. Sh. A

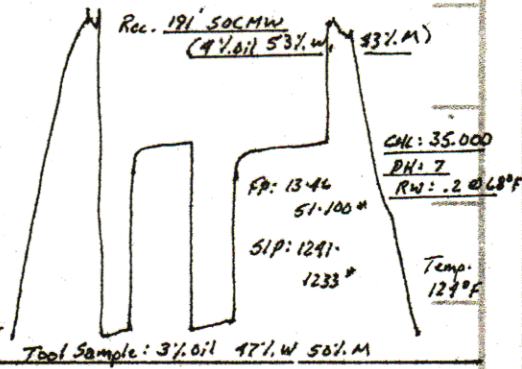
LS. G. Th.

LS. wt. Sh. Foss. Sh. Chly. VSh. Calcitic

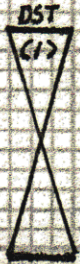
Stuck coming out for DST (1)
Spotted 80 Barrel oil, Freed up.

DST (1) 4228-4251

1st OPEN: Blow out to 7" BB: 1/2"
2nd OPEN: " " " 8" BB: 1/4"
30-60-45-90



4200



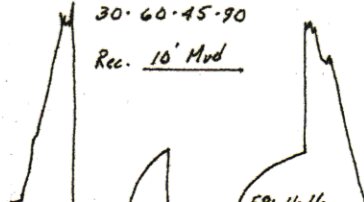
6-9-17	6-10-17
VIS: 51	VIS: 56
WT: 9.1	WT: 8.9
WL: 7.2	WL: 10.9
CHL: 5800	CHL: 9000

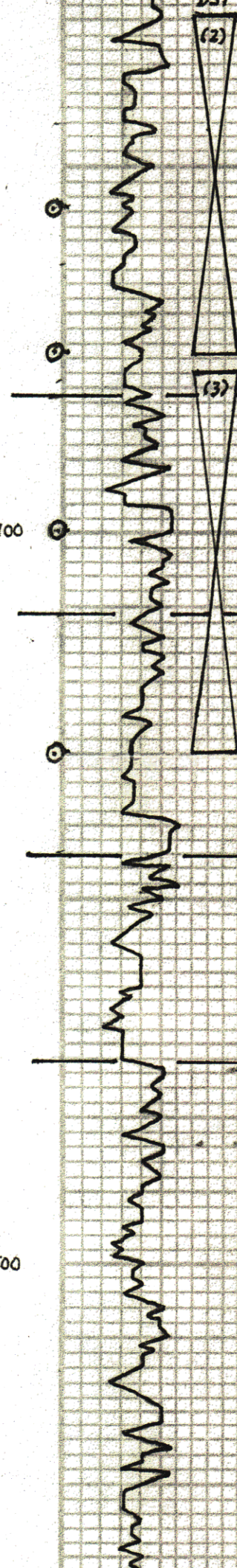
4300

DST

DST (2) 4329-4375

1st OPEN: Built to 3/4" BB: None
2nd OPEN: Surface Blow BB: "





(2)

Sh dk Gy. Blk
LS. Bl. DK Bl. VSh. Foss

Sh. Blue Gy.

LS. wt. Tr. Sil. ool. ool. VSh. Δ Fr. P. V. sh
Bl. Lt. Bl. Str. SSSO Dull Flow
No odor

Sh. Lt. Gy.

LS. wt. ool. Sil. ool. P. V. sh
DK Bl. Bl. Str. FSSO Dull Flow No odor

VIS: 53 WT: 8.9
ML: 7.2 CML: 10200

LS. Tr. Gy. Dk.

STARK 4381-1134
Sh. dk Gy.

Sh.

LS. wt. Tr. ool. Foss Fr. P. V. sh
Lt. Bl. Str. SSSO Fr. Flow Feeder
Δ Gy

LS. Tr. Gy. VSh. Foss.

HUSHPUCKNEY 4411-1161
Sh. dk Gy.

Sh. Gy.

LS. Tr. wt. VSh. Foss Sil. Chk.
LS. Tr. Bl. Sil. Foss Sil. Δ

LS. Lt. Gy. VSh. Δ VSh. Chk.

B/KC 4444-1197
Sh. Rd. silty.

Sh. Lt. Gy. Silty. Sdy
LS. Lt. Gy. silty.

Sh. silty. silty. Lt. Gy.

MARMATON 4472-1225

LS. Tr. Gy. VSh. Foss Sil. Δ
Δ Orange

LS. Tr. Sil. Foss Sil. Δ

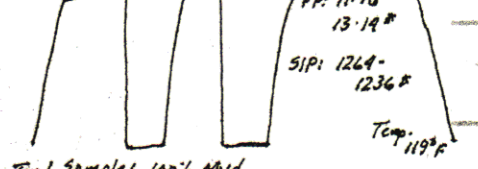
Sh. Rd. Lt. Gy.

LS. Lt. Gy. w/ sh. Incl.

LS. wt. Orange w/ Rd. sh. Sil. Foss.

LS. wt. Lt. Gy. VSh. Foss Sil. Δ

Sh. Rd. Lt. Gy. Sdy. LS. silty. Rd. Orange

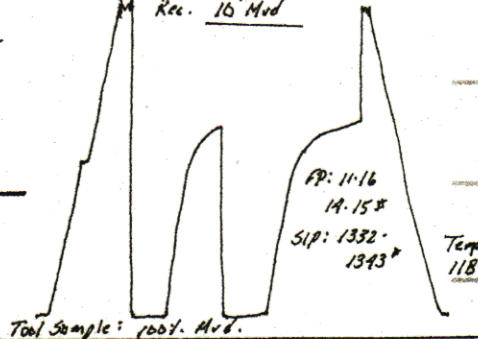


Tool Sample: 100% Mud

DST (3) 4378-4130

1st OPEN: Blow built to 1" BB: None
2nd OPEN: Surface Blow DB: "

30.60-45.90

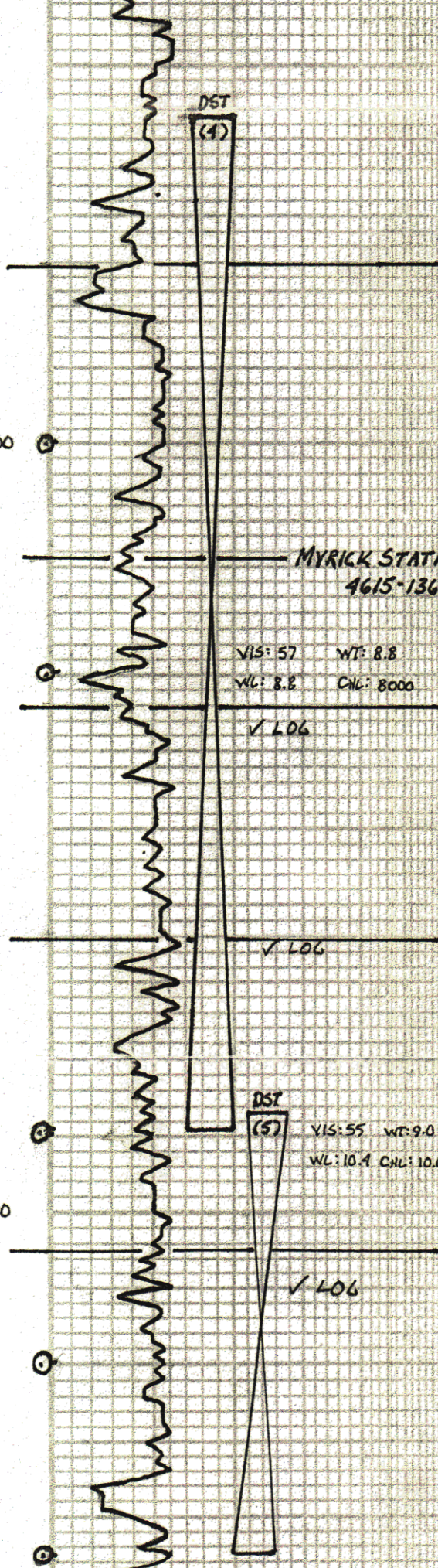


Rec. 10' Mud

Tool Sample: 100% Mud.

4400

4500



LS. Tan wt. Sli. Foss. Sli. A
 Δ wt. Ltg.
 LS. Tan wt. Sli. Foss. Sli. Chlly.
 Sh. DEg. Blk
 Sh. Ltg.
PAWNEE 4576-1329

LS. Tan wt. ool. V. Sli. ool. chlly.
 LS. wt. Sli. Foss. Sli. A
 Δ wt. Ltg.
 LS. Tan V. Sli. Foss. V. Sli. A
 Sh. Blk Carb.
 LS. DE Bl. Dns.
 Sh.

**MYRICK STATION
 4615-1368**

VIS: 57 WT: 8.8
 WL: 8.8 CHL: 8000

LS. Gy. Foss. Calcitic Dns.
 Δ DE Bl. Gy. LS. Tan V. Sli. Foss. V. Sli. Chlly
 Sh. Blk Carb.
FORT SCOTT 4634-1387

✓ LOG

LS. wt. Sli. Foss. Sli. Chlly. V. Sli. A
 LS. Gy. V. Sli. Foss. V. Sli. A V. Sli. Calcitic.

CHEROKEE 4664-1917

✓ LOG

Sh. Blk Carb.
 LS. Tan gy. ool. Sli. A Dns.
 LS. Tan gy. ool. Sli. A

DST
 (5)

VIS: 55 WT: 9.0
 WL: 10.1 CHL: 10,000

LS. Gy. Bl. V. Sli. Foss.
 Sh. DEg.
 Sh. Gy. DEg.

JOHNSON 4705-1958

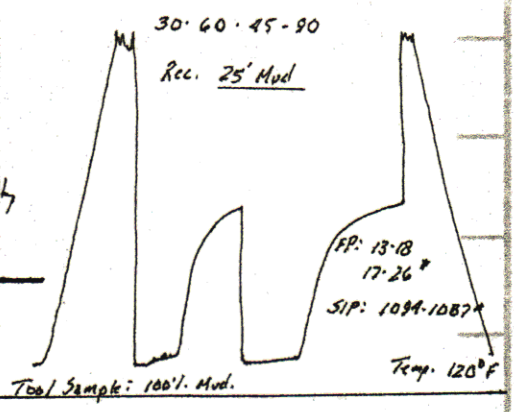
✓ LOG

LS. Tan Gy. Sli. Foss. Sli. A V. Sli. Calcitic
 Pl. V. gy. Bl. DE Bl. Str. FSD. No Flow
 No Ool.
 LS. Tan Ltg. V. Sli. Foss. V. Sli. A
 Δ Bl. To
 LS. wt. V. Sli. Foss. Sli. Chlly. V. Sli. Calcitic
 LS. Ltg. Sli. Foss. Sli. A Pl. V. gy.
 Hvy. DE Bl. Str. Hvy. Fd. No Flow No Ool.
 Sh. Blue-Ga Sdy.
 LS. LS. Ltg. wt. Sdy.

Sh. Yellow Gd.

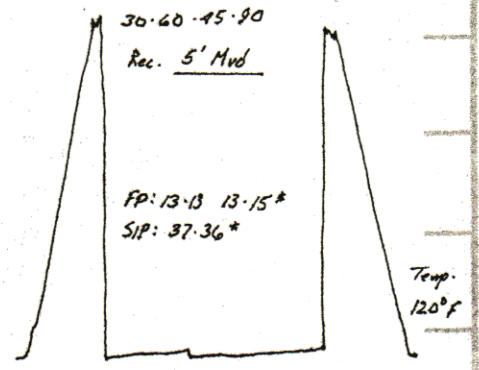
DST (4) 4557-4689

1ST OPEN: Blow built to 1/2"
 2ND OPEN: No Blow



DST (5) 4687-4715

1ST OPEN: Blow built to 1/4"
 2ND OPEN: No Blow



VIS: 57 WT: 9.1
WL: 8.0 CHL: 8500

Sh. Tng. Yellow Gr.

Δ Yellow weathered Sdy sh. Ltl. Fr. Hd. w. Sd. Rd

Sh. Tng. Yellow Gr.

Δ wt. sil. Foss. Fresh Lut

MISSISSIPPI 4799

-1547

LS. G. Br. Fresh Dns. w/ Tr. Glauc.

Sd. Sdy sh. Blue Gr. Fr. Hd. Gr. Sub. Rd

LS. Tn. G. Sdy w/ Co. Gr. Rd. Sub. Rd. Sd

LS. Tn. ool. Sil. Chalky.

LS. Tn. wt. Sdy. w/ Co. Gr. Rd. Sub. Rd.

LS. wt. Tn. ool. Sdy.

Δ wt.

LS. Tn. Lt. Br. Sil. Δ

Δ wt. Ltl.

DOLOMITE SPERGEN 4870-1623

Dol. Br. Fresh Svc. w/ Tr. Glauc.

Dol. Tn. G. Fresh Svc.

Δ wt. Orange

Dol. Tn. G. Fresh Svc.

4800

V LOG

4900

RTD 4900-1653