



**TRILOBITE
TESTING, INC.**

DRILL STEM TEST REPORT

Vincent Oil Corporation
200 W Douglas Ave #725
Wichita, KS 67202
ATTN: Ken LeBlanc

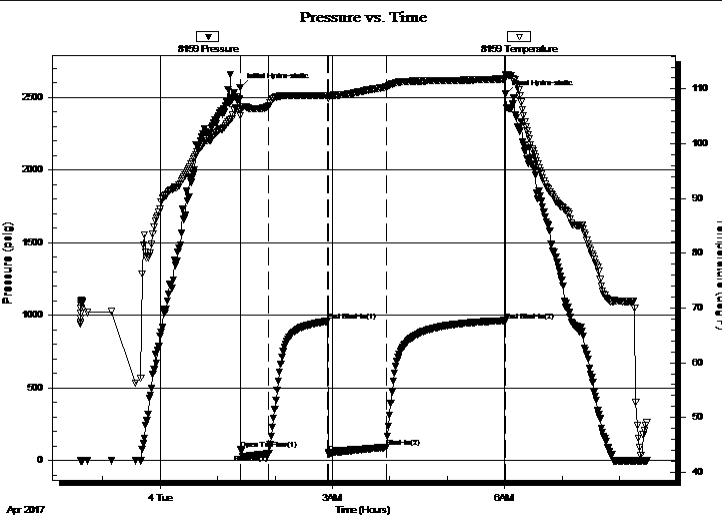
34-28S-23W Ford,
Keough 5-34
Job Ticket: 59933 **DST#: 1**
Test Start: 2017.04.03 @ 22:36:45

GENERAL INFORMATION:

Formation: **Pawnee**
Deviated: No Whipstock: ft (KB) Test Type: Conventional Bottom Hole (Initial)
Time Tool Opened: 01:23:45 Tester: Leal Cason
Time Test Ended: 08:29:30 Unit No: 74
Interval: 5035.00 ft (KB) To 5060.00 ft (KB) (TVD) Reference Elevations: 2540.00 ft (KB)
Total Depth: 5060.00 ft (KB) (TVD) 2528.00 ft (CF)
Hole Diameter: 7.88 inches Hole Condition: Good KB to GR/CF: 12.00 ft

Serial #: 8159 Inside
Press@RunDepth: 91.22 psig @ 5036.00 ft (KB) Capacity: 8000.00 psig
Start Date: 2017.04.03 End Date: 2017.04.04 Last Calib.: 2017.04.04
Start Time: 22:36:46 End Time: 08:29:30 Time On Btm: 2017.04.04 @ 01:23:30
Time Off Btm: 2017.04.04 @ 06:01:00

TEST COMMENT: IF: Strong Blow , BOB in 2 minutes
IS: No Blow Back
FF: Strong Blow , BOB immediate, GTS in 20 minutes, TSTM, Caught Sample
FS: No Blow Back



PRESSURE SUMMARY

| Time (Min.) | Pressure (psig) | Temp (deg F) | Annotation |
|-------------|-----------------|--------------|----------------------|
| 0 | 2566.14 | 106.22 | Initial Hydro-static |
| 1 | 77.16 | 105.07 | Open To Flow (1) |
| 30 | 45.83 | 106.84 | Shut-In(1) |
| 92 | 957.97 | 108.84 | End Shut-In(1) |
| 93 | 46.16 | 108.24 | Open To Flow (2) |
| 153 | 91.22 | 110.34 | Shut-In(2) |
| 277 | 962.63 | 111.84 | End Shut-In(2) |
| 278 | 2522.21 | 112.66 | Final Hydro-static |

Recovery

| Length (ft) | Description | Volume (bbl) |
|-------------|--------------------------|--------------|
| 0.00 | GTS | 0.00 |
| 62.00 | GMCO 12%G 10%W 14%M 64%O | 0.87 |
| 144.00 | GMCO 30%G 20%M 50%O | 2.02 |
| | | |
| | | |

Gas Rates

| Choke (inches) | Pressure (psig) | Gas Rate (Mcf/d) |
|----------------|-----------------|------------------|
| | | |



**TRILOBITE
TESTING, INC.**

DRILL STEM TEST REPORT

FLUID SUMMARY

Vincent Oil Corporation
200 W Douglas Ave #725
Wichita, KS 67202
ATTN: Ken LeBlanc

34-28S-23W Ford,
Keough 5-34
Job Ticket: 59933 **DST#: 1**
Test Start: 2017.04.03 @ 22:36:45

Mud and Cushion Information

| | | | |
|-----------------------------------|----------------------------|-----------------|---------|
| Mud Type: Gel Chem | Cushion Type: | Oil API: | deg API |
| Mud Weight: 9.00 lb/gal | Cushion Length: ft | Water Salinity: | ppm |
| Viscosity: 52.00 sec/qt | Cushion Volume: bbl | | |
| Water Loss: 10.39 in ³ | Gas Cushion Type: | | |
| Resistivity: ohm.m | Gas Cushion Pressure: psig | | |
| Salinity: 6900.00 ppm | | | |
| Filter Cake: 0.02 inches | | | |

Recovery Information

Recovery Table

| Length ft | Description | Volume bbl |
|--------------|--------------------------|---------------|
| 0.00 | GTS | 0.000 |
| 62.00 | GWMO 12%G 10%W 14%M 64%O | 0.870 |
| 144.00 | GMCO 30%G 20%M 50%O | 2.020 |

Total Length: 206.00 ft Total Volume: 2.890 bbl

Num Fluid Samples: 0 Num Gas Bombs: 0 Serial #:

Laboratory Name: Laboratory Location:

Recovery Comments:

Serial #: 8159

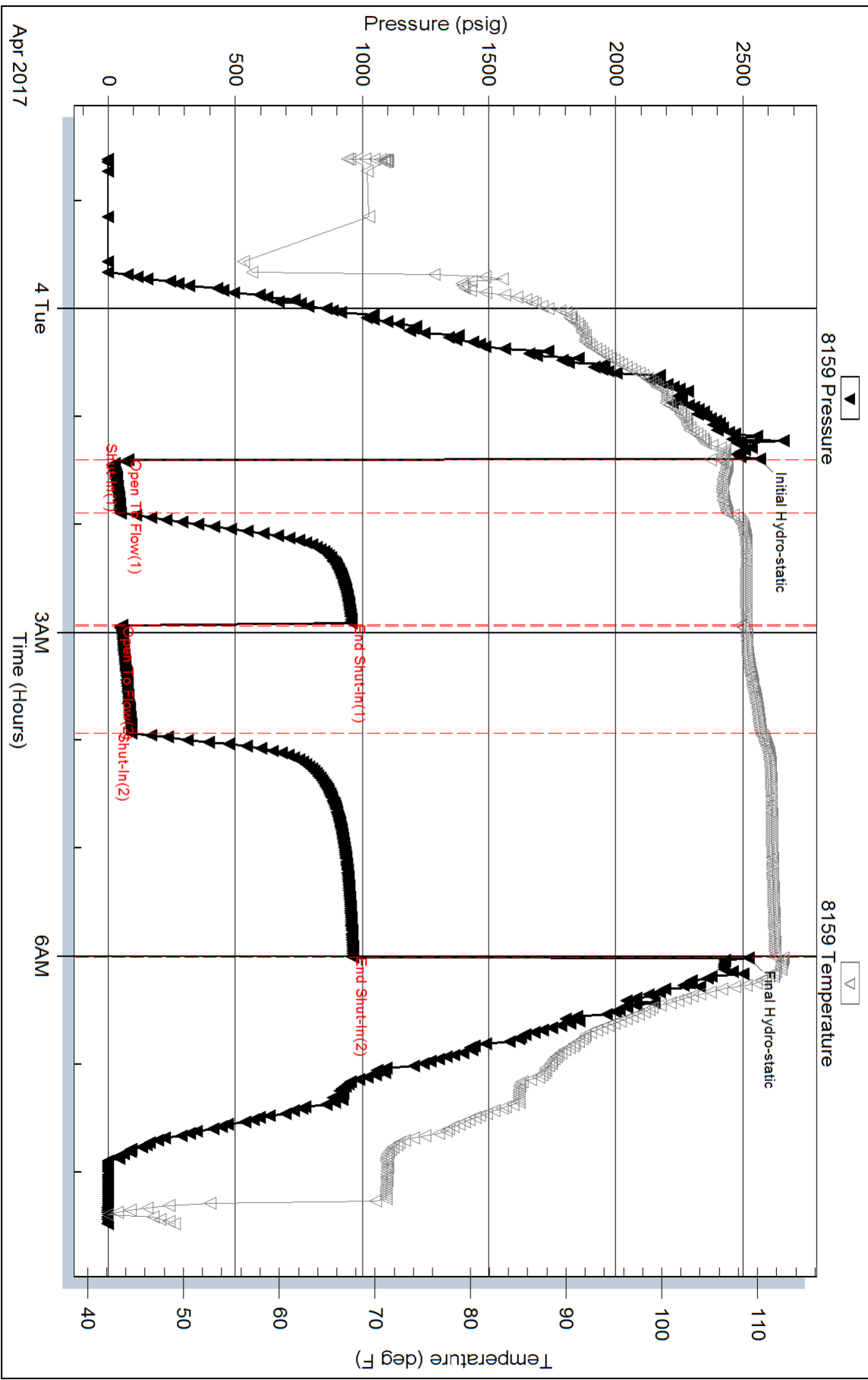
Inside

Vincent Oil Corporation

Keough 5-34

DST Test Number: 1

Pressure vs. Time



Serial #: 6806

Outside Vincent Oil Corporation

Keough 5-34

DST Test Number: 1

