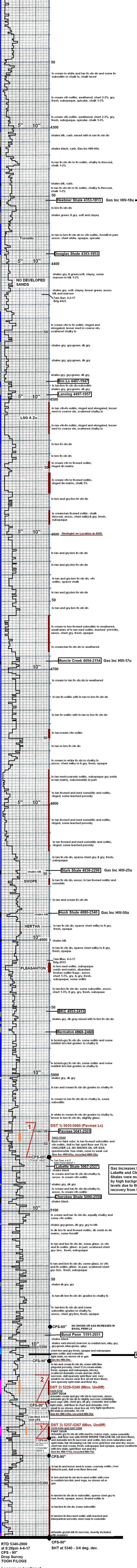


API: 15-057-20980-0000  
**Vincent Oil Corporation**  
 Keough 5-34  
 2245 FNL & 1433 FWL  
 Sec. 34-T28S-R23W  
 Ford County, Kansas  
 KB 2540

Displace Mud System  
 near 3800 feet

**FIELD REPORT**



Short Trip 30 Stands - pulled title  
 CTCH after short trip 60 minutes  
 Pipe Strap at 5060 - 1.73' short to board  
 SHT at 5060 - 1 deg. dev.

DST 1) 5035-5060 (Pawnee)  
 [30-60-60-120]  
 GTS/ 20" on 2nd opening: PSTM  
 Rec: 144' Gassy Mud Cut Oil  
 (30% g, 50% o, 10% w, 20% m)  
 62' Gassy Watery Mud Cut Oil  
 (12% g, 64% o, 10% w, 14% m)

206' - Total Fluid - ALL IN DRILL PIPE  
 10F' - 77-46, FFP: 46-91  
 BHP: 958-963  
 (slight blugging on initial flow)  
 (NO CHLORIDES AVAILABLE ON GRIND-OUT)

Gas Increases for the  
 Labette and Cherokee  
 Shales were masked  
 by high background  
 levels due to the  
 recovery from DST 1

RTD 5340-2800  
 at 8:28pm 4-6-17  
 CFS - 90"  
 Drop Survey  
 TOOH F/LOGS  
 Loggers on location at  
 MIGNIGHT  
 ELI WL Svc. logging off  
 bottom at 1:15am 4-7-17,  
 finished logging at  
 5:45am 4-7-17

LTD 5340-2800  
 7am Friday 4-7-17  
 5340 - preparing to  
 run 4-1/2" prod. csg.  
 for further evaluation

DST 2) 5020-5040 (Mississippian)  
 [30-60-60-120]  
 GTS/8" gauging gas  
 1st open: 10" on 1/4" choke 197.349 MCFG  
 20" on 1/2" choke 623.307 MCFG  
 30" on 1/2" choke 515.371 MCFG  
 bled off - no blow back  
 2nd open: gauging gas  
 10" on 1/2" choke 461.405 MCFG  
 20" on 1/2" choke 582.828 MCFG  
 30" on 1/2" choke 633.367 MCFG  
 40" on 1/2" choke 636.793 MCFG  
 50" on 1/2" choke 650.285 MCFG  
 60" on 1/2" choke 650.285 MCFG  
 bled off - no blow back  
 Rec: 5193' Gas in Pipe  
 10' Gas Cut Mud (10% g, 90% m)

10' - Total Fluid - ALL IN DRILL PIPE  
 10F' - 127-153, FFP: 138-172  
 BHP: 757-753  
 Temp: 111 deg. F

DST 3) 5256-5267 (Mississippian)  
 [30-60-60-120]  
 GTS/20" on second opening - gauging gas  
 20" thru 60" gauged 6.513 MCFG  
 Rec: 4946' Gas in Pipe  
 124' Oil (100% oil - 38.8 API Gravity)  
 134' Gassy Oil Cut Mud  
 (10% g, 20% o, 70% m)  
 62' Slightly Oily Mud Cut Water  
 (2% g, 82% w, 16% m)

320' - Total Fluid - ALL IN DRILL PIPE  
 10F' - 30-58, FFP: 59-131  
 BHP: 1333-1327  
 chlorides of mud system: 8,900 ppm  
 chlorides of formation water: 59,000 ppm  
 resistivity of formation water: 0.12 @ 76 deg F