



DRILL STEM TEST REPORT

Prepared For: **R F Hembree Oil LLC**

P O Box 542`
Ness City, Kansas

ATTN: Wyatt Urban

Blum #1

3-19s-13w Barton

Start Date: 2017.06.01 @ 07:12:00

End Date: 2017.06.01 @ 12:24:00

Job Ticket #: 01169 DST #: 1

Eagle Testers
1309 Patton Road Great Bend, Kansas 67530
620-791-7394

Printed: 2017.06.01 @ 10:43:37



DRILL STEM TEST REPORT

R F Hembree Oil LLC

3-19s-13w Barton

P O Box 542`
Ness City, Kansas

Blum #1

Job Ticket: 01169

DST#: 1

ATTN: Wyatt Urban

Test Start: 2017.06.01 @ 07:12:00

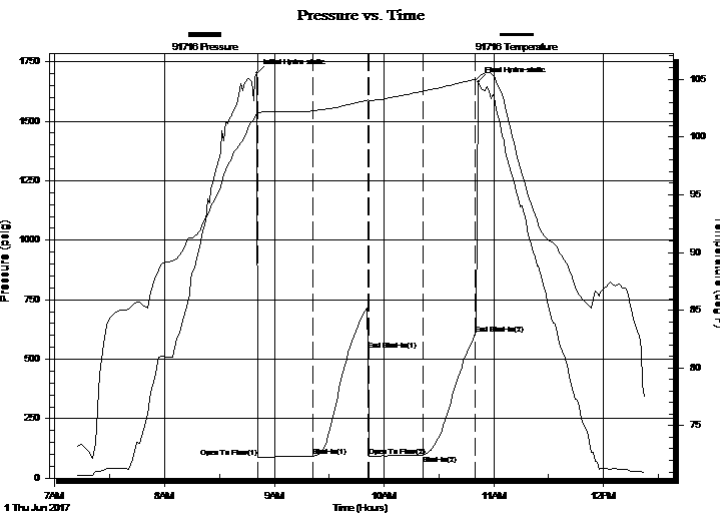
GENERAL INFORMATION:

Formation: **Kansas city"H-I-J"**
 Deviated: No Whipstock: ft (KB)
 Time Tool Opened: 08:52:00
 Time Test Ended: 12:24:00
 Interval: **3371.00 ft (KB) To 3360.00 ft (KB) (TVD)**
 Total Depth: 3371.00 ft (KB) (TVD)
 Hole Diameter: 7.88 inches Hole Condition: Fair
 Test Type: Conventional Bottom Hole (Initial)
 Tester: Gene Budig
 Unit No: 1
 Reference Elevations: 1886.00 ft (KB)
 1879.00 ft (CF)
 KB to GR/CF: 7.00 ft

Serial #: 91716 Outside

Press@RunDepth: 606.21 psig @ 3355.05 ft (KB) Capacity: 5000.00 psig
 Start Date: 2017.06.01 End Date: 2017.06.01 Last Calib.: 2017.06.01
 Start Time: 07:12:00 End Time: 12:22:30 Time On Btm: 2017.06.01 @ 08:50:30
 Time Off Btm: 2017.06.01 @ 10:51:30

TEST COMMENT: 1st Opening 30 Minutes w eak steady 1/2 inch blow through out
 1st Shut-In 30 Minutes no blow back
 2nd opening 30 Minutes very w eak surface blow lthrough out
 2nd Shut-In 30 Minutes no blow back



PRESSURE SUMMARY

Time (Min.)	Pressure (psig)	Temp (deg F)	Annotation
0	1701.93	101.98	Initial Hydro-static
1	87.78	102.07	Open To Flow (1)
31	91.82	102.25	Shut-In(1)
61	539.16	103.19	End Shut-In(1)
62	93.13	103.17	Open To Flow (2)
91	97.46	103.96	Shut-In(2)
120	606.21	104.98	End Shut-In(2)
121	1665.91	105.14	Final Hydro-static

Recovery

Length (ft)	Description	Volume (bbl)
30.00	drilling mud less than 1% oil	0.42
0.00	ther w as a good show of oil betwe en	0.00
0.00	`the tools	0.00

Gas Rates

	Choke (inches)	Pressure (psig)	Gas Rate (Mcf/d)



DRILL STEM TEST REPORT

R F Hembree Oil LLC

3-19s-13w Barton

P O Box 542`
Ness City, Kansas

Blum #1

Job Ticket: 01169

DST#: 1

ATTN: Wyatt Urban

Test Start: 2017.06.01 @ 07:12:00

GENERAL INFORMATION:

Formation: **Kansas city "H-I-J"**
 Deviated: No Whipstock: ft (KB)
 Time Tool Opened: 08:52:00
 Time Test Ended: 12:24:00
 Interval: **3371.00 ft (KB) To 3360.00 ft (KB) (TVD)**
 Total Depth: 3371.00 ft (KB) (TVD)
 Hole Diameter: 7.88 inches Hole Condition: Fair
 Test Type: Conventional Bottom Hole (Initial)
 Tester: Gene Budig
 Unit No: 1
 Reference Elevations: 1886.00 ft (KB)
 1879.00 ft (CF)
 KB to GR/CF: 7.00 ft

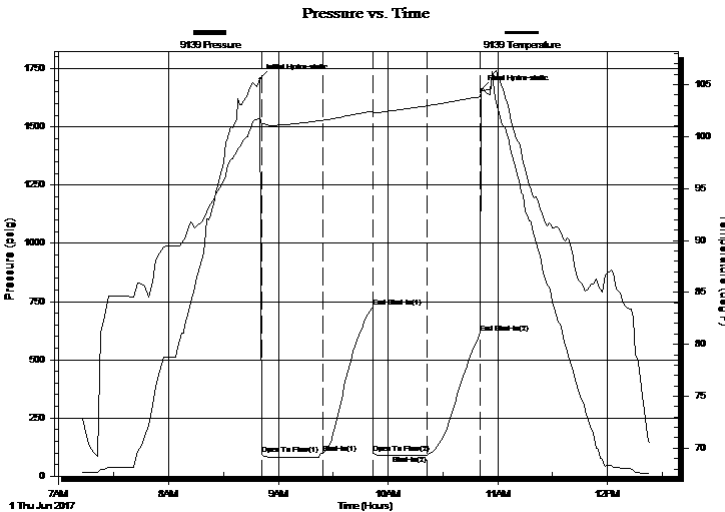
Serial #: 9139

Inside

Press@RunDepth: 613.11 psig @ 3355.05 ft (KB) Capacity: 5000.00 psig
 Start Date: 2017.06.01 End Date: 2017.06.01 Last Calib.: 2017.06.01
 Start Time: 07:12:00 End Time: 12:23:00 Time On Btm: 2017.06.01 @ 08:50:00
 Time Off Btm: 2017.06.01 @ 10:51:00

TEST COMMENT: 1st Opening 30 Minutes w eak steady 1/2 inch blow through out
 1st Shut-In 30 Minutes no blow back
 2nd opening 30 Minutes very w eak surface blow lthrough out
 2nd Shut-In 30 Minutes no blow back

PRESSURE SUMMARY



Time (Min.)	Pressure (psig)	Temp (deg F)	Annotation
0	1706.49	101.78	Initial Hydro-static
1	95.20	101.14	Open To Flow (1)
35	99.39	101.56	Shut-In(1)
62	728.20	102.43	End Shut-In(1)
62	99.15	102.28	Open To Flow (2)
92	91.23	102.97	Shut-In(2)
121	613.11	103.84	End Shut-In(2)
121	1657.91	104.37	Final Hydro-static

Recovery

Length (ft)	Description	Volume (bbl)
30.00	drilling mud less than 1% oil	0.42
0.00	ther w as a good show of oil betw een	0.00
0.00	`the tools	0.00

Gas Rates

Choke (inches)	Pressure (psig)	Gas Rate (Mcf/d)



DRILL STEM TEST REPORT

TOOL DIAGRAM

R F Hembree Oil LLC

3-19s-13w Barton

P O Box 542`
Ness City, Kansas

Blum #1

Job Ticket: 01169

DST#: 1

ATTN: Wyatt Urban

Test Start: 2017.06.01 @ 07:12:00

Tool Information

Drill Pipe:	Length: 3276.00 ft	Diameter: 3.80 inches	Volume: 45.95 bbl	Tool Weight:	2000.00 lb
Heavy Wt. Pipe:	Length: 0.00 ft	Diameter: 0.00 inches	Volume: 0.00 bbl	Weight set on Packer:	20000.00 lb
Drill Collar:	Length: 0.00 ft	Diameter: 0.00 inches	Volume: 0.00 bbl	Weight to Pull Loose:	62000.00 lb
			<u>Total Volume: 45.95 bbl</u>	Tool Chased	0.00 ft
Drill Pipe Above KB:	25.00 ft			String Weight: Initial	48000.00 lb
Depth to Top Packer:	3271.00 ft			Final	48000.00 lb
Depth to Bottom Packer:	ft				
Interval between Packers:	89.05 ft				
Tool Length:	109.05 ft				
Number of Packers:	2	Diameter: 6.75 inches			

Tool Comments:

Tool Description	Length (ft)	Serial No.	Position	Depth (ft)	Accum. Lengths
------------------	-------------	------------	----------	------------	----------------

Shut In Tool	5.00			3256.00	
Hydraulic tool	5.00			3261.00	
Top Packer	5.00			3266.00	
Packer	5.00			3271.00	20.00 Bottom Of Top Packer
Anchor	5.00			3276.00	
Change Over Sub	0.75			3276.75	
Drill Pipe	62.55			3339.30	
Change Over Sub	0.75			3340.05	
Anchor	15.00			3355.05	
Recorder	0.00	9139	Inside	3355.05	
Recorder	0.00	91716	Outside	3355.05	
Bullnose	5.00			3360.05	89.05 Anchor Tool

Total Tool Length: 109.05



DRILL STEM TEST REPORT

FLUID SUMMARY

R F Hembree Oil LLC

3-19s-13w Barton

P O Box 542`
Ness City, Kansas

Blum #1

Job Ticket: 01169

DST#: 1

ATTN: Wyatt Urban

Test Start: 2017.06.01 @ 07:12:00

Mud and Cushion Information

Mud Type: Gel Chem
Mud Weight: 10.00 lb/gal
Viscosity: 45.00 sec/qt
Water Loss: 10.20 in³
Resistivity: ohm.m
Salinity: 4000.00 ppm
Filter Cake: 1.00 inches

Cushion Type:
Cushion Length: ft
Cushion Volume: bbl
Gas Cushion Type:
Gas Cushion Pressure: psig

Oil API: deg API
Water Salinity: ppm

Recovery Information

Recovery Table

Length ft	Description	Volume bbl
30.00	drilling mud less than 1% oil	0.421
0.00	ther w as a good show of oil betw een	0.000
0.00	`the tools	0.000

Total Length: 30.00 ft Total Volume: 0.421 bbl

Num Fluid Samples: 0

Num Gas Bombs: 0

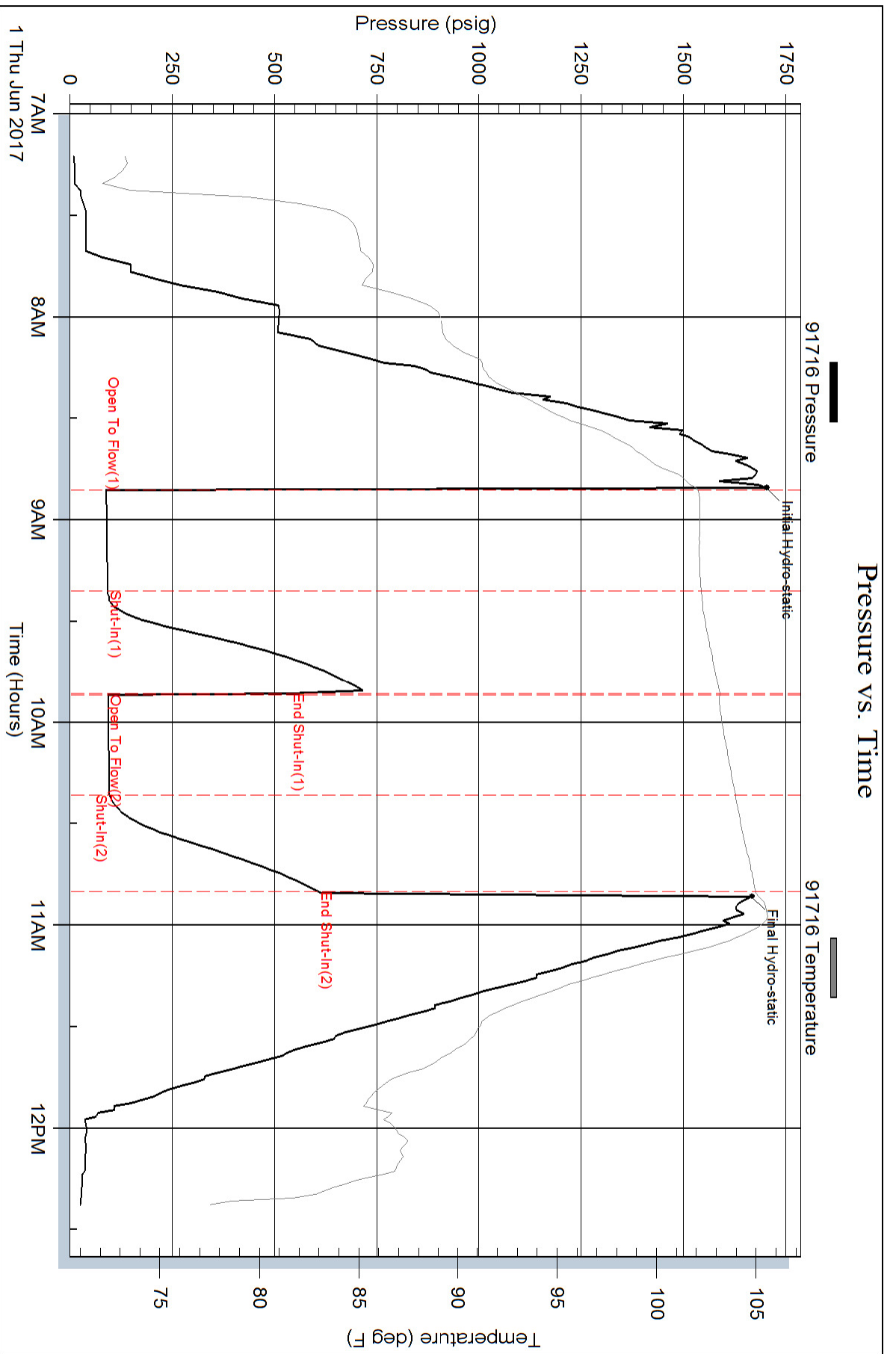
Serial #:

Laboratory Name:

Laboratory Location:

Recovery Comments:

Pressure vs. Time



Serial #: 9139

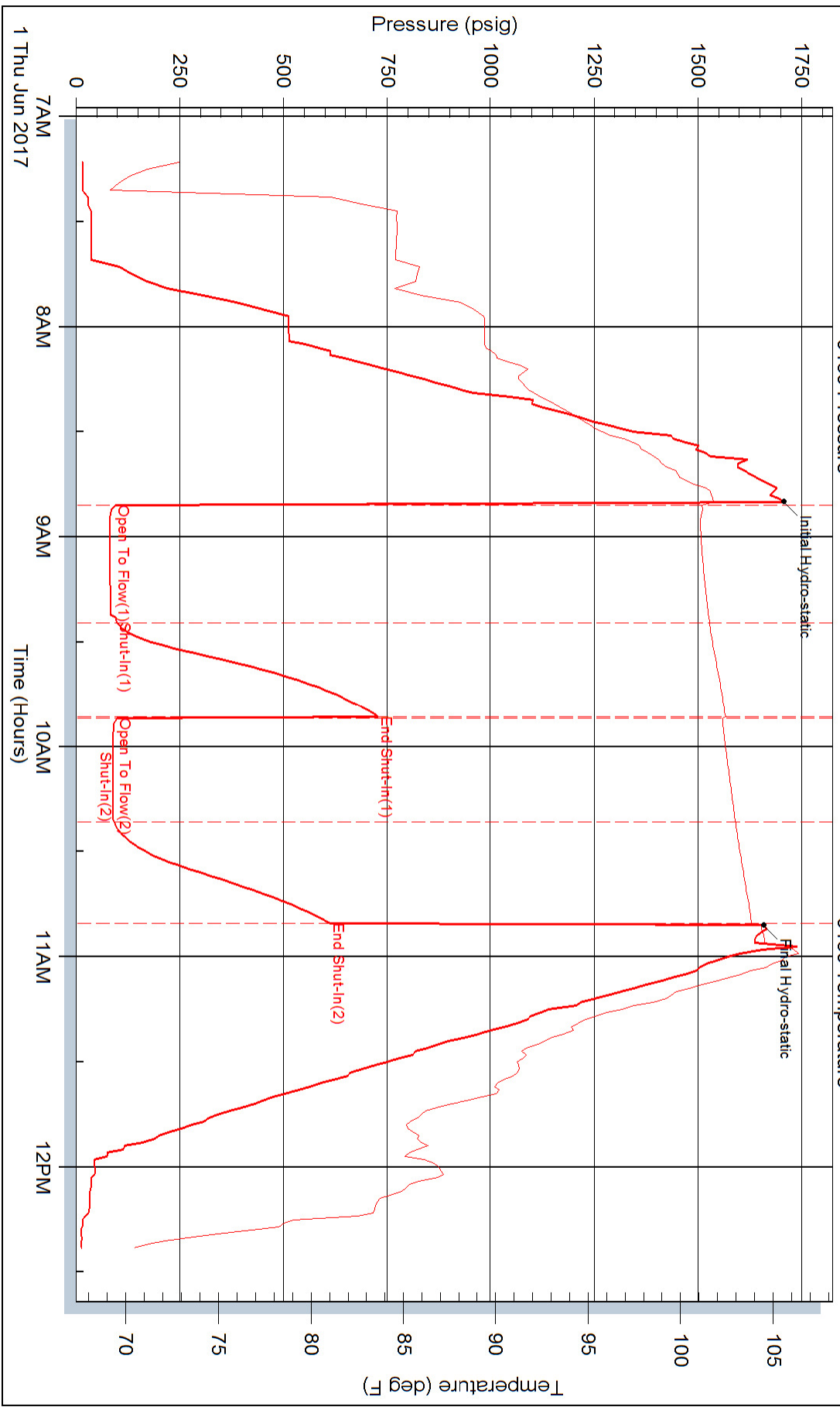
Inside

R F Hembree Oil LLC

Blum #1

DST Test Number: 1

Pressure vs. Time



Eagle Testers

Ref. No: 01169

Printed: 2017.06.01 @ 10:43:39