



Fall & Associates

Stake and Elevation Service

P.O. Box 222

Pretty Prairie, KS. 67570

785-243-7506

Date 7-25-17

Invoice Number 0721171

MURFIN DRILLING

3-7

Pancimi

Operator

Number

Farm Name

Rawlins-KS

7

2s

36w

1650'FSL 330'FWL

County-State

S

T

R

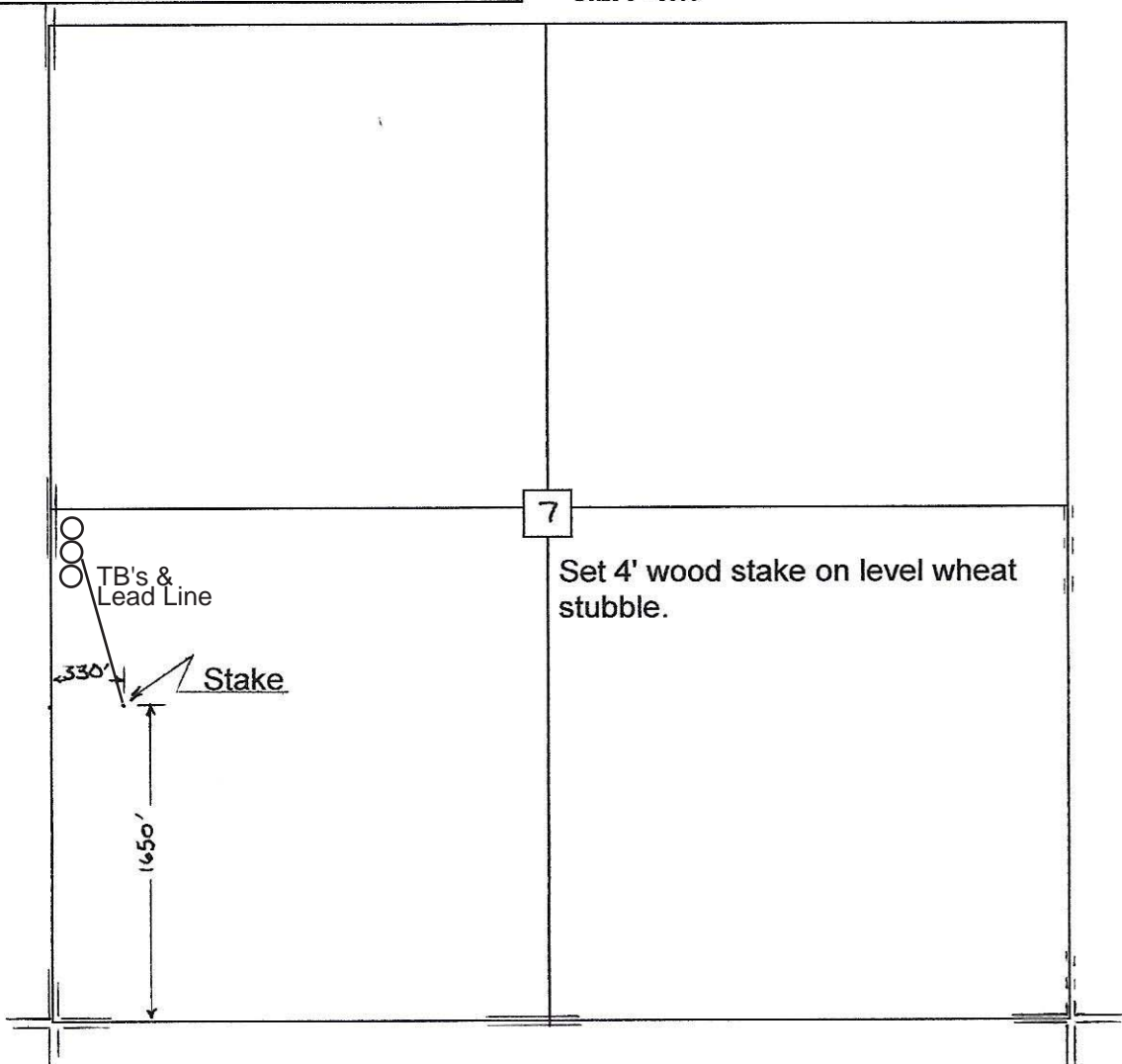
Location

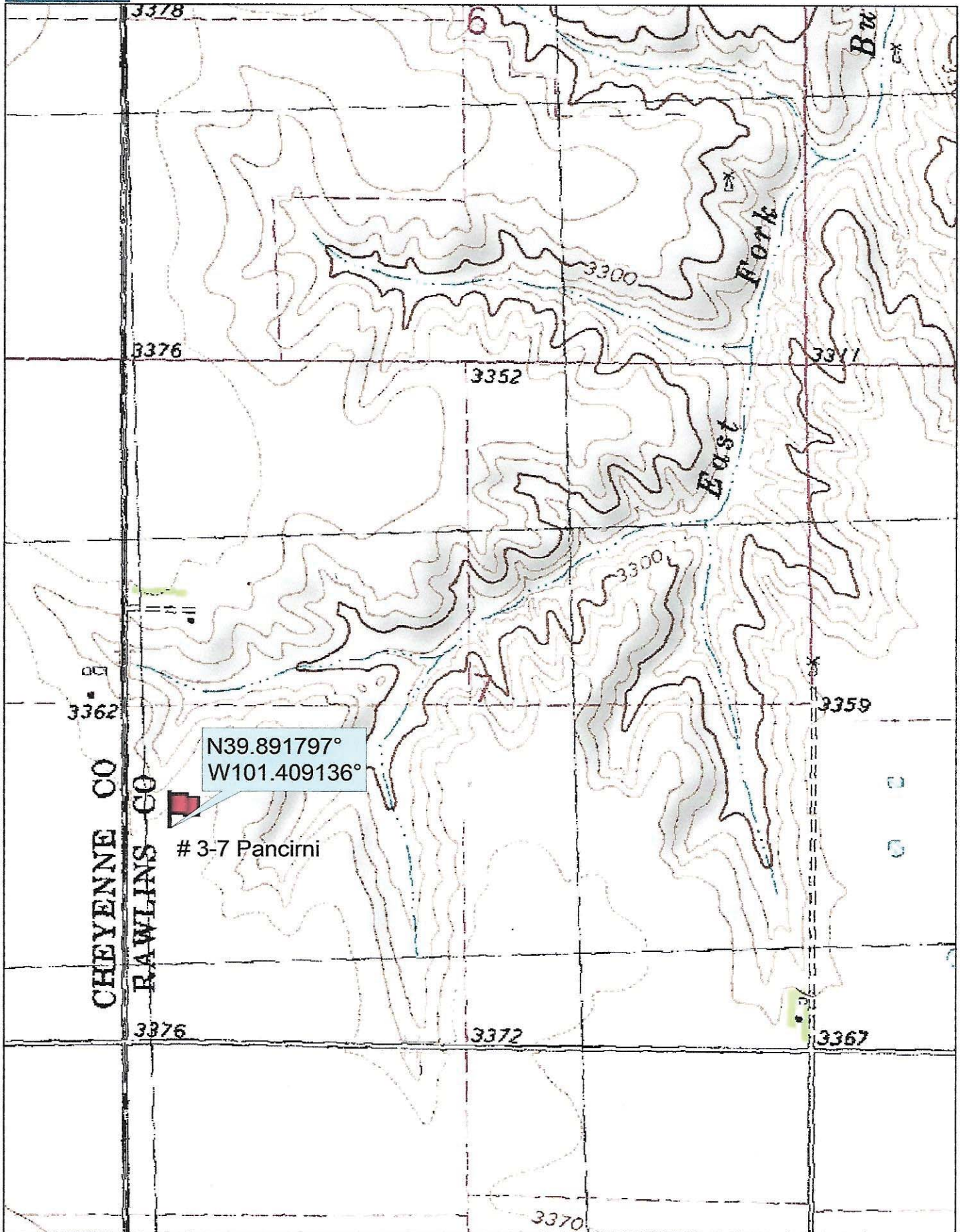
Murfin Drilling
250 N Water
Suite 300
Wichita, KS. 67202

Elevation 3373 Gr.

Ordered By: Shauna

Scale 1"=1000'





Data use subject to license.

© DeLorme. Topo North America™ 9.

www.delorme.com

