

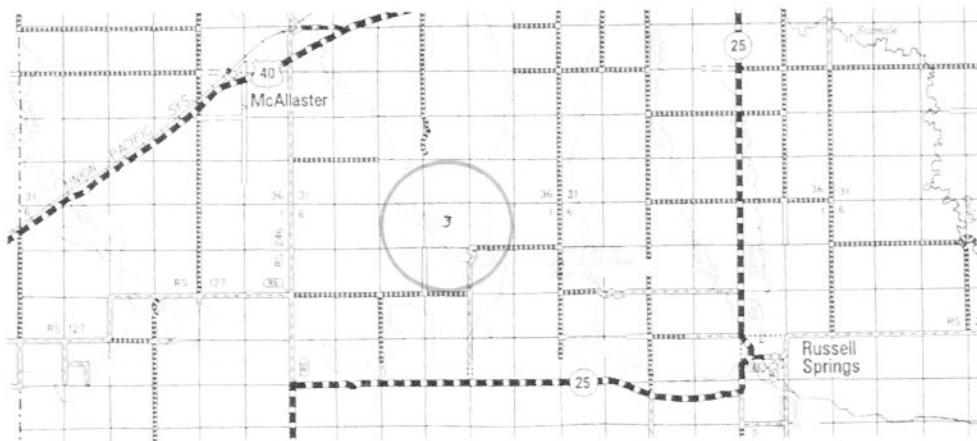
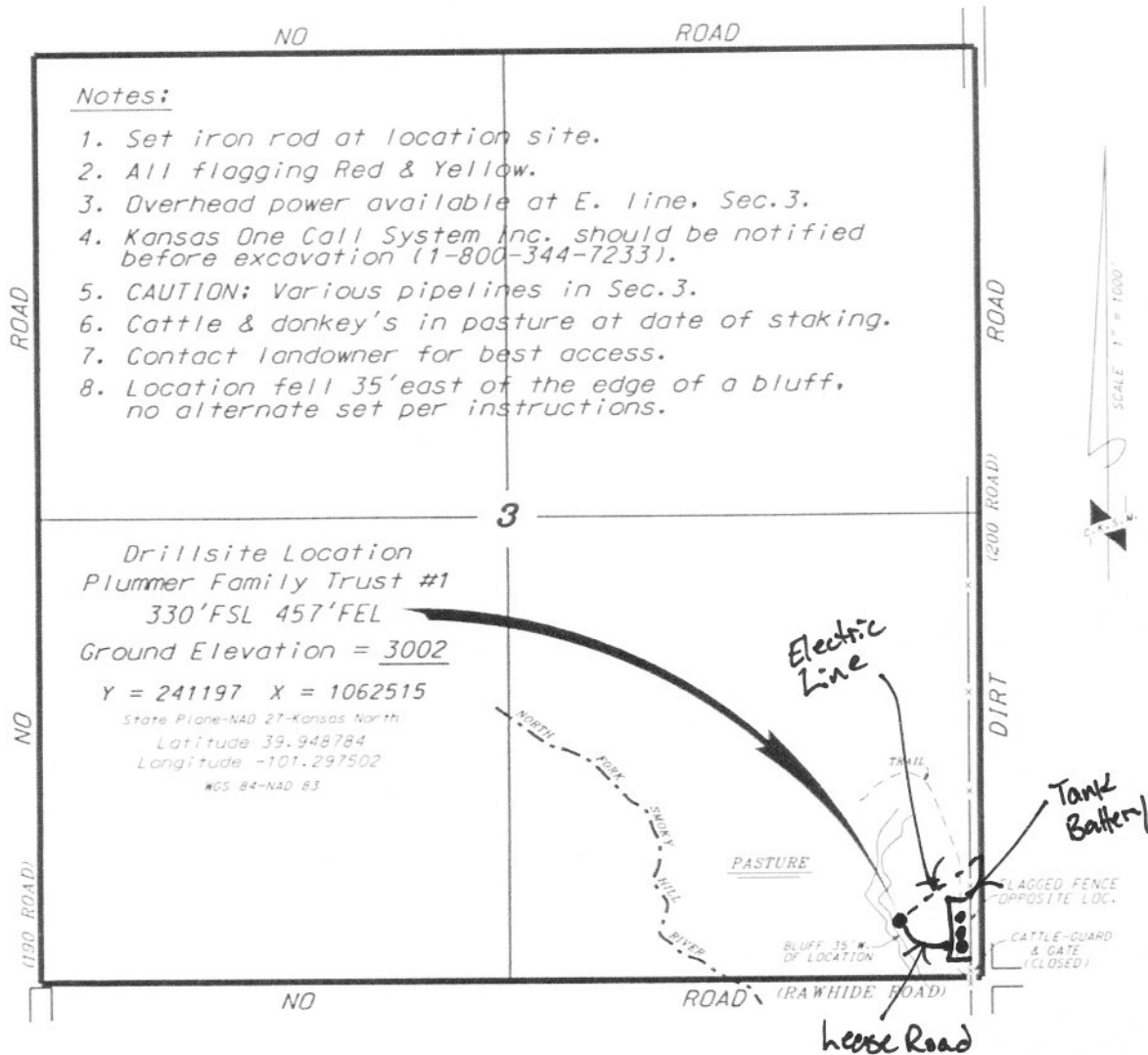
FOSSIL RESOURCES, LLC
 PLUMMER FAMILY TRUST LEASE
 SE.1/4, SECTION 3, T13S, R36W
 LOGAN COUNTY, KANSAS

Notes:

1. Set iron rod at location site.
2. All flagging Red & Yellow.
3. Overhead power available at E. line, Sec.3.
4. Kansas One Call System Inc. should be notified before excavation (1-800-344-7233).
5. CAUTION: Various pipelines in Sec.3.
6. Cattle & donkey's in pasture at date of staking.
7. Contact landowner for best access.
8. Location fell 35' east of the edge of a bluff, no alternate set per instructions.

Drillsite Location
 Plummer Family Trust #1
 330' FSL 457' FEL
 Ground Elevation = 3002

Y = 241197 X = 1062515
 State Plane-NAD 27-Kansas North
 Latitude 39.948784
 Longitude -101.297502
 NGS 84-NAD 83



- Controlling data is based upon the best maps and photographs available to us and upon a regular section of land containing 640 acres.
- Approximate section lines were determined using the normal standard of care of oilfield surveyors practicing in the state of Kansas. The section corners, which establish the precise section lines, were not necessarily located, and the exact location of the drillsite location in the section is not guaranteed. Therefore, the operator securing this service and accepting this plot and all other parties relying thereon agree to hold Central Kansas Oilfield Services, Inc., its officers and employees harmless from all losses, costs and expenses and shall entities released from any liability from incidental or consequential damages.
- Elevations derived from National Geodetic Vertical Datum.

Date July 27, 2017

CENTRAL KANSAS OILFIELD SERVICES, INC. (620)792-1977

* Ingress and egress to location as shown on this plot is per usage only and may not be legally opened for public use. Contact landowner, tenant and county road department for access.