



TEMPORARY ABANDONMENT WELL APPLICATION

OPERATOR: License# _____
 Name: _____
 Address 1: _____
 Address 2: _____
 City: _____ State: _____ Zip: _____ + _____
 Contact Person: _____
 Phone: (_____) _____
 Contact Person Email: _____
 Field Contact Person: _____
 Field Contact Person Phone: (_____) _____

API No. 15- _____
 Spot Description: _____
 _____ - _____ - _____ - _____ Sec. _____ Twp. _____ S. R. _____ E W
 _____ feet from N / S Line of Section
 _____ feet from E / W Line of Section
 GPS Location: Lat: _____, Long: _____
(e.g. xx.xxxxx) (e.g. -xxx.xxxxx)
 Datum: NAD27 NAD83 WGS84
 County: _____ Elevation: _____ GL KB
 Lease Name: _____ Well #: _____
 Well Type: (check one) Oil Gas OG WSW Other: _____
 SWD Permit #: _____ ENHR Permit #: _____
 Gas Storage Permit #: _____
 Spud Date: _____ Date Shut-In: _____

	Conductor	Surface	Production	Intermediate	Liner	Tubing
Size						
Setting Depth						
Amount of Cement						
Top of Cement						
Bottom of Cement						

Casing Fluid Level from Surface: _____ How Determined? _____ Date: _____
 Casing Squeeze(s): _____ to _____ w / _____ sacks of cement, _____ to _____ w / _____ sacks of cement. Date: _____
(top) (bottom) (top) (bottom)
 Do you have a valid Oil & Gas Lease? Yes No
 Depth and Type: Junk in Hole at _____ Tools in Hole at _____ Casing Leaks: Yes No Depth of casing leak(s): _____
(depth) (depth)
 Type Completion: ALT. I ALT. II Depth of: DV Tool: _____ w / _____ sacks of cement Port Collar: _____ w / _____ sack of cement
(depth) (depth)
 Packer Type: _____ Size: _____ Inch Set at: _____ Feet
 Total Depth: _____ Plug Back Depth: _____ Plug Back Method: _____

Geological Data:

Formation Name	Formation Top	Formation Base	Completion Information
1. _____	At: _____	to _____ Feet	Perforation Interval _____ to _____ Feet or Open Hole Interval _____ to _____ Feet
2. _____	At: _____	to _____ Feet	Perforation Interval _____ to _____ Feet or Open Hole Interval _____ to _____ Feet

UNDER PENALTY OF PERJURY I HEREBY ATTEST THAT THE INFORMATION CONTAINED HEREIN IS TRUE AND CORRECT TO THE BEST OF MY KNOWLEDGE

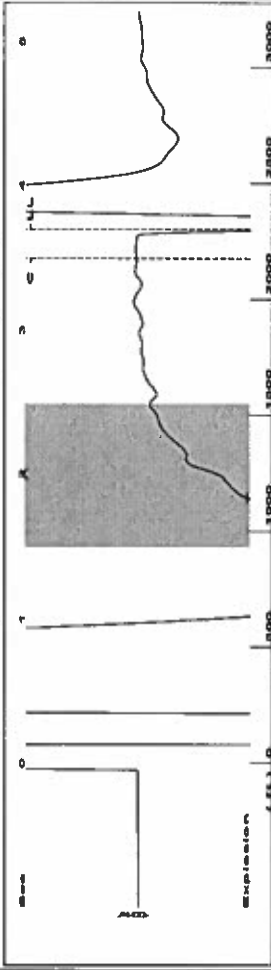
Submitted Electronically

Do NOT Write in This Space - KCC USE ONLY	Date Tested: _____	Results: _____	Date Plugged: _____	Date Repaired: _____	Date Put Back in Service: _____
	Review Completed by: _____ Comments: _____				
TA Approved: <input type="checkbox"/> Yes <input type="checkbox"/> Denied Date: _____					

Mail to the Appropriate KCC Conservation Office:

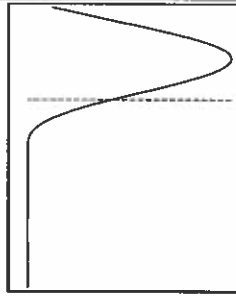
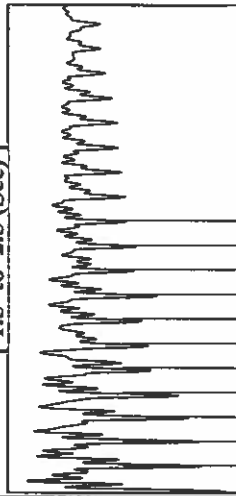
	KCC District Office #1 - 210 E. Frontview, Suite A, Dodge City, KS 67801	Phone 620.682.7933
	KCC District Office #2 - 3450 N. Rock Road, Building 600, Suite 601, Wichita, KS 67226	Phone 316.337.7400
	KCC District Office #3 - 137 E. 21st St., Chanute, KS 66720	Phone 620.902.6450
	KCC District Office #4 - 2301 E. 13th Street, Hays, KS 67601-2651	Phone 785.261.6250

Group: TAD Well: Garden City A-3 (acquired on: 08/31/17 13:44:31)



Filter Type High Pass Automatic Collar Count Yes
 Manual Acoustic Veloc 1260.44 ft/s Manual JTS/sec 19.8807
 Time 3.697 sec
 Joints 72.6032 Jts
 Depth 2301.52 ft

[1.5 to 2.5 (Sec)]

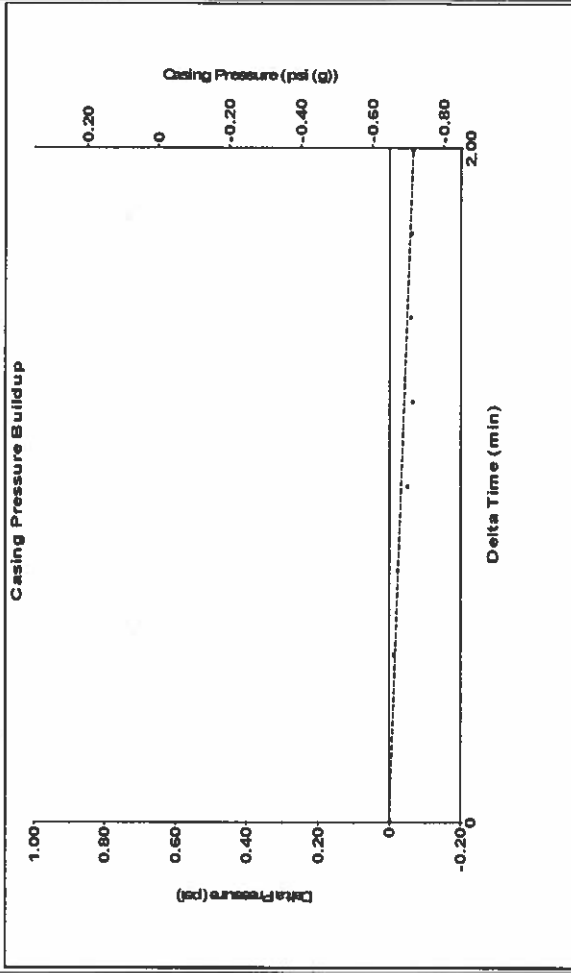


Analysis Method: Automatic

Group: TAD Well: Garden City A-3 (acquired on: 08/31/17 13:44:31)

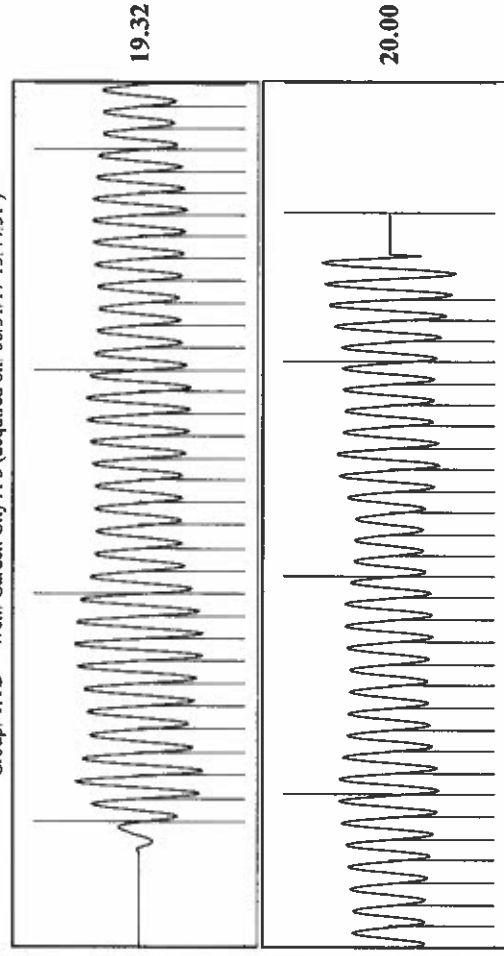
Production	Potential	Casing Pressure	Producing
Current	- * - BBL/D	-0.6 psi (g)	Annular
Oil	- * - BBL/D	-0.066 psi	Gas Flow 0 Mscf/D
Water	- * - Mscf/D	2.00 min	% Liquid 100 %
Gas	- * -	Gas/Liquid Interface Pressure	
IPR Method	Vogel	0.2 psi (g)	
PBHP/SBHP	- * -		
Production Efficiency	0.0		
Oil 40 deg API		Liquid Level Depth	Pump Intake
Water 1.05 Sp.Gr:H2O		2301.52 ft	202.7 psi (g)
Gas 0.75 Sp.Gr:AIR		Pump Intake Depth	Producing BHP
		2899.00 ft	209.5 psi (g)
Acoustic Velocity	1245.07 ft/s	Formation Depth	Static BHP
		2914.00 ft	- * - psi (g)
Formation Submergence			
Total Gaseous Liquid Column HT (TVD)	597 ft		
Equivalent Gas Free Liquid HT (TVD)	597 ft		
Acoustic Test			

Group: TAD Well: Garden City A-3 (acquired on: 08/31/17 13:44:31)



Change in Pressure -0.07 psi PT8746 Range
 Change in Time 2.00 min 0 - ? psi

Group: TAD Well: Garden City A-3 (acquired on: 08/31/17 13:44:31)



Acoustic Velocity 1245.07 ft/s Joints counted 63
 Joints Per Second 19.6384 Jts/sec Joints to liquid level 72.6032
 Depth to liquid level 2301.52 ft Filter Width 17.8807
 Automatic Collar Count Yes Time to 1st Collar 0.288 3.496

September 06, 2017

Katherine McClurkan
Merit Energy Company, LLC
13727 Noel Road, Suite 1200
Dallas, TX 75240

Re: Temporary Abandonment
API 15-055-21310-00-00
Garden City A 3
NW/4 Sec.33-23S-34W
Finney County, Kansas

Dear Katherine McClurkan:

"Your temporary abandonment (TA) application for the well listed above has been approved. In accordance with K.A.R. 82-3-111 the TA status of this well will expire 09/06/2018.

- * If you return this well to service or plug it, please notify the District Office.
- * If you sell this well you are required to file a Transfer of Operator form, T-1.
- * If the well will remain temporarily abandoned, you must submit a new TA application, CP-111, before 09/06/2018.

You may contact me at the number above if you have questions.

Very truly yours,

Michael Maier"