



# TEMPORARY ABANDONMENT WELL APPLICATION

OPERATOR: License# \_\_\_\_\_  
 Name: \_\_\_\_\_  
 Address 1: \_\_\_\_\_  
 Address 2: \_\_\_\_\_  
 City: \_\_\_\_\_ State: \_\_\_\_\_ Zip: \_\_\_\_\_ + \_\_\_\_\_  
 Contact Person: \_\_\_\_\_  
 Phone: (\_\_\_\_\_) \_\_\_\_\_  
 Contact Person Email: \_\_\_\_\_  
 Field Contact Person: \_\_\_\_\_  
 Field Contact Person Phone: (\_\_\_\_\_) \_\_\_\_\_

API No. 15- \_\_\_\_\_  
 Spot Description: \_\_\_\_\_  
 \_\_\_\_\_ - \_\_\_\_\_ - \_\_\_\_\_ - \_\_\_\_\_ Sec. \_\_\_\_\_ Twp. \_\_\_\_\_ S. R. \_\_\_\_\_  E  W  
 \_\_\_\_\_ feet from  N /  S Line of Section  
 \_\_\_\_\_ feet from  E /  W Line of Section  
 GPS Location: Lat: \_\_\_\_\_, Long: \_\_\_\_\_  
(e.g. xx.xxxxx) (e.g. -xxx.xxxxx)  
 Datum:  NAD27  NAD83  WGS84  
 County: \_\_\_\_\_ Elevation: \_\_\_\_\_  GL  KB  
 Lease Name: \_\_\_\_\_ Well #: \_\_\_\_\_  
 Well Type: (check one)  Oil  Gas  OG  WSW  Other: \_\_\_\_\_  
 SWD Permit #: \_\_\_\_\_  ENHR Permit #: \_\_\_\_\_  
 Gas Storage Permit #: \_\_\_\_\_  
 Spud Date: \_\_\_\_\_ Date Shut-In: \_\_\_\_\_

	Conductor	Surface	Production	Intermediate	Liner	Tubing
Size						
Setting Depth						
Amount of Cement						
Top of Cement						
Bottom of Cement						

Casing Fluid Level from Surface: \_\_\_\_\_ How Determined? \_\_\_\_\_ Date: \_\_\_\_\_  
 Casing Squeeze(s): \_\_\_\_\_ to \_\_\_\_\_ w / \_\_\_\_\_ sacks of cement, \_\_\_\_\_ to \_\_\_\_\_ w / \_\_\_\_\_ sacks of cement. Date: \_\_\_\_\_  
(top) (bottom) (top) (bottom)  
 Do you have a valid Oil & Gas Lease?  Yes  No  
 Depth and Type:  Junk in Hole at \_\_\_\_\_  Tools in Hole at \_\_\_\_\_ Casing Leaks:  Yes  No Depth of casing leak(s): \_\_\_\_\_  
(depth) (depth)  
 Type Completion:  ALT. I  ALT. II Depth of:  DV Tool: \_\_\_\_\_ w / \_\_\_\_\_ sacks of cement  Port Collar: \_\_\_\_\_ w / \_\_\_\_\_ sack of cement  
(depth) (depth)  
 Packer Type: \_\_\_\_\_ Size: \_\_\_\_\_ Inch Set at: \_\_\_\_\_ Feet  
 Total Depth: \_\_\_\_\_ Plug Back Depth: \_\_\_\_\_ Plug Back Method: \_\_\_\_\_

**Geological Data:**

Formation Name	Formation Top	Formation Base	Completion Information
1. _____	At: _____	to _____ Feet	Perforation Interval _____ to _____ Feet or Open Hole Interval _____ to _____ Feet
2. _____	At: _____	to _____ Feet	Perforation Interval _____ to _____ Feet or Open Hole Interval _____ to _____ Feet

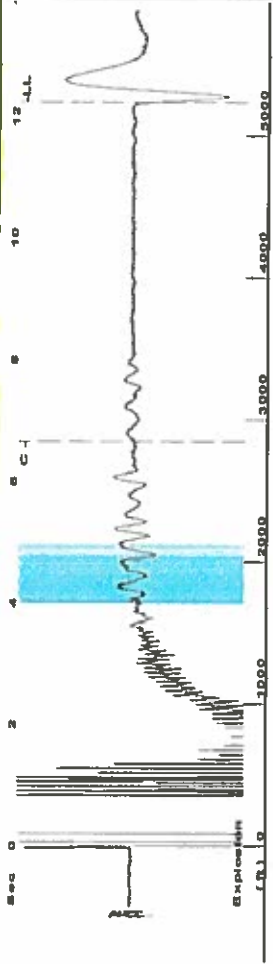
UNDER PENALTY OF PERJURY I HEREBY ATTEST THAT THE INFORMATION CONTAINED HEREIN IS TRUE AND CORRECT TO THE BEST OF MY KNOWLEDGE

Submitted Electronically

<b>Do NOT Write in This Space - KCC USE ONLY</b>	Date Tested: _____	Results: _____	Date Plugged: _____	Date Repaired: _____	Date Put Back in Service: _____
	Review Completed by: _____ Comments: _____				
TA Approved: <input type="checkbox"/> Yes <input type="checkbox"/> Denied Date: _____					

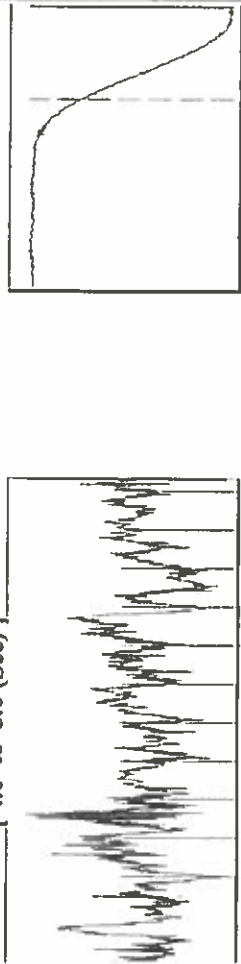
**Mail to the Appropriate KCC Conservation Office:**

	KCC District Office #1 - 210 E. Frontview, Suite A, Dodge City, KS 67801	Phone 620.682.7933
	KCC District Office #2 - 3450 N. Rock Road, Building 600, Suite 601, Wichita, KS 67226	Phone 316.337.7400
	KCC District Office #3 - 137 E. 21st St., Chanute, KS 66720	Phone 620.902.6450
	KCC District Office #4 - 2301 E. 13th Street, Hays, KS 67601-2651	Phone 785.261.6250



Filter Type High Pass Automatic Collar Count Yes  
 Manual Acoustic Velo801.517 f/s Manual JTS/sec 12.6422  
 Time 12.245 sec  
 Joints 165.162 J/s  
 Depth 5235.62 ft

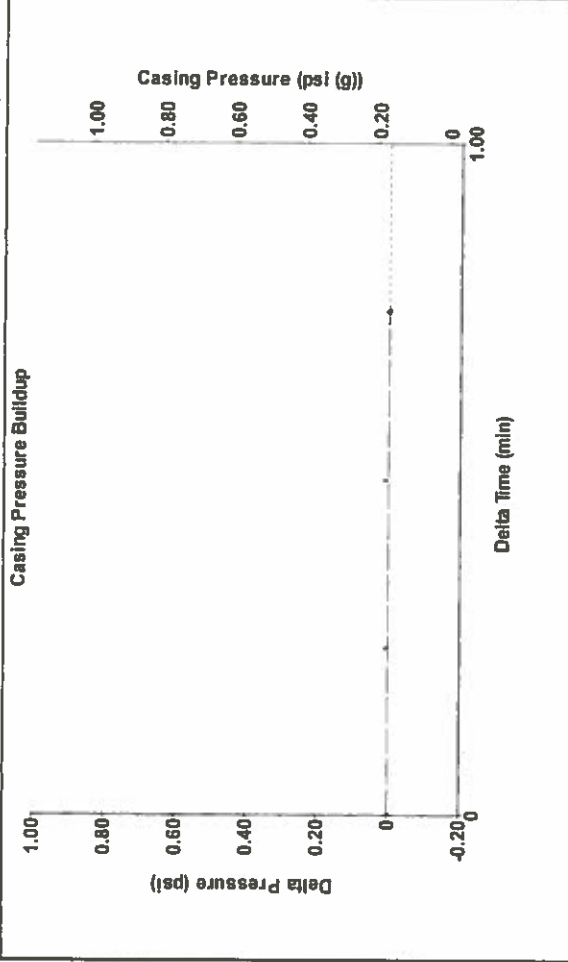
[ 4.0 to 5.0 (Sec) ]



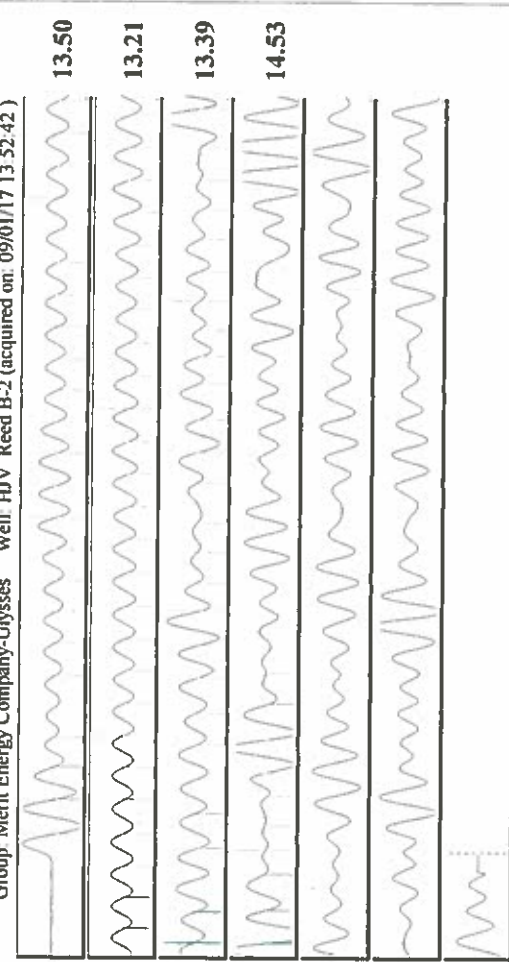
**Analysis Method: Automatic**

Production	Potential	Casing Pressure	Producing
Oil -.-	-.- BBL/D	0.2 psi (g)	Annular
Water -.-	-.- BBL/D	0.001 psi	Gas Flow
Gas -.-	-.- Msc/D	0.75 min	% Liquid
IPR Method	Vogel	Gas/Liquid Interface Pressure	0 Msc/D
PBHP/SBHP	-.-	3.4 psi (g)	100 %
Production Efficiency	0.0	Liquid Level Depth	
Oil 40 deg API		5235.62 ft	
Water 1.05 Sp Gr:H2O		Pump Intake Depth	
Gas 1.12 Sp Gr:AIR		5347.00 ft	
Acoustic Velocity	855.144 f/s	Formation Depth	
		5324.00 ft	
Formation Submergence		Pump Intake	
Total Gaseous Liquid Column HT (TVD)	111 ft	41.8 psi (g)	
Equivalent Gas Free Liquid HT (TVD)	111 ft	Producing BHP	
Acoustic Test		33.8 psi (g)	
		Static BHP	
		-.- psi (g)	

Tim Frydendall-Fluid Level Technician



Change in Pressure 0.00 psi Range PT9522  
 Change in Time 0.75 min



Acoustic Velocity 855.144 f/s Joints counted 86  
 Joints Per Second 13.4881 J/s/sec Joints to liquid level 165.162  
 Depth to liquid level 5235.62 ft Filter Width 10.6422  
 Automatic Collar Count Yes Time to 1st Collar 0.284 6.66

September 06, 2017

Katherine McClurkan  
Merit Energy Company, LLC  
13727 Noel Road, Suite 1200  
Dallas, TX 75240

Re: Temporary Abandonment  
API 15-067-21481-00-00  
HJV Reed B 2  
SW/4 Sec.01-30S-35W  
Grant County, Kansas

Dear Katherine McClurkan:

Your application for Temporary Abandonment (TA) for the above-listed well is denied for the following reasons(s):

**Shut-in Over 10 years**

Pursuant to K.A.R. 82-3-111, the well must be plugged or returned to service by October 04, 2017.

If you wish to instead file an application for an exception to the 10-year limitation of K.A.R. 82-3-111, demonstrating why it is necessary to TA the well for more than 10 years, then you must file the application for an exception by October 04, 2017.

**This deadline does NOT override any compliance deadline given to you in any Commission Order.**

You may contact me if you have any questions.

Sincerely,  
Michael Maier  
KCC DISTRICT 1